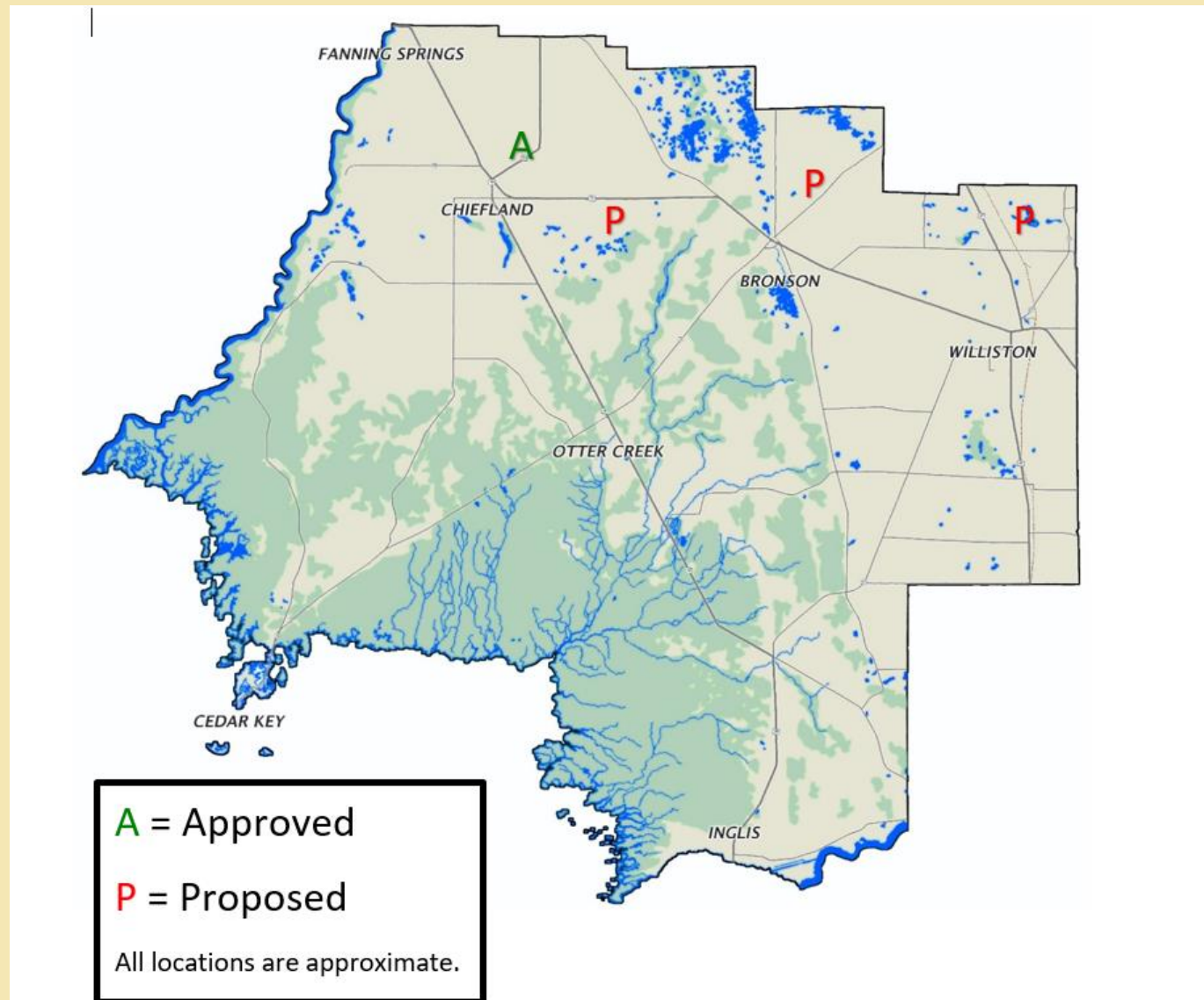




Solar Presentation Levy County Board of County Commissioners

April 20, 2021

Approximate Location of Approved and Proposed Solar Facilities



Levy County

- March 2021 approval of first 715 acre solar facility east of Chiefland via Conditional Use process.
- Pending discussions with three other possible solar facilities. One applicant representing two projects and another representing one.

Alachua County

- Alachua County calls solar facilities Arrays and they are classified as major utilities and institutional uses in their comp plan.
- Arrays are allowed in any zoning district technically. However, given the nature of arrays (large size) the only really practical district where these are located is in the agriculture district. Alachua County doesn't have many huge tracts of land lying around in their urban cluster and, if they did, an array does not make much sense from an economic standpoint. They do have two much smaller arrays in the cluster but these are in areas not otherwise probable for development (the Murphree wellfield near the water treatment plant and near Paynes Prairie).
- All major utilities are permitted by special exception (one hearing each before the planning commission and BoCC)
- 5 applied so far. 3 approved, 1 denied, 1 in process.....

Gilchrist County

- Solar Farms are only allowed in the A-2 and Industrial Land Use categories by approval of a Special Use Permit following a public hearing before the Board of County Commissioners, and if the Special Use Permit is granted, a second public hearing is then required for Site Plan approval, also before the Board.

Take Away from Solar Workshop

- The team from Duke Energy, Florida gave a presentation that was an informative solar presentation.
- Florida will be ranked second in the nation for new solar and third in total solar by state.
- It was clear that solar has limits restricted by transmission lines and distribution centers.
- It was also clear that the large scale of these arrays would best be suited in our more rural areas like Forestry/Rural Residential (F/RR) and Agricultural/Rural Residential (A/RR).

Tasks for Staff from the Solar Workshop

- During the Zoning Map Adoption, add Solar facilities/arrays (75.9mega-watt or less) to the F/RR and A/RR zoning categories as special exceptions.