

**RESOLUTION
NUMBER 2021-149**

A RESOLUTION OF THE BOARD OF COUNTY COMMISSIONERS, LEVY COUNTY, FLORIDA, AMENDING THE BOUNDARIES OF THE COUNTY COMMISSIONER DISTRICTS BASED ON THE 2020 CENSUS; PROVIDING FOR PUBLICATION; AND PROVIDING DIRECTIONS TO THE CLERK.

WHEREAS, in accordance with §1(e) in Article VIII of the Florida Constitution and Chapter 124, Florida Statutes, in the odd-numbered year after each decennial census the Board of County Commissioners of Levy County (the “Board”) must review and divide the County into districts of contiguous territory as nearly equal in population as practicable (commonly referred to as “Redistricting”); and

WHEREAS, the U.S. Census Bureau released its 2020 Decennial Census data on August 12, 2021; and

WHEREAS, a review of the 2020 Decennial Census data indicated that Levy County has sustained population growth that necessitates Redistricting; and

WHEREAS, the Board (through RFP 2021-004 process) retained DRMP, Inc. to provide Redistricting Consulting Services; and

WHEREAS, the Board held a public hearing on October 5, 2021 to commence the Redistricting process and held 5 public workshops (one in each Commission District) in October and November to receive public input on the Redistricting; and

WHEREAS, the Board considered the final proposed options for Redistricting at its regular public meeting on November 16, 2021, and selected its preferred option; and

WHEREAS, the new Commissioner Districts selected by the Board are depicted and described in Exhibit A to this Resolution and the Board finds that these new Commissioner Districts meet the legal requirements for Redistricting; and

NOW, THEREFORE, BE IT RESOLVED BY THE BOARD OF COUNTY COMMISSIONERS, LEVY COUNTY, FLORIDA, THAT:

1. From and after the effective date of this Resolution, the existing County Commissioner Districts (adopted by Resolution 2011-66 recorded in Official Record Book 1249, Page 533 of the Public Records of Levy County) are repealed and replaced with the Districts adopted herein.

2. The Board has divided the County into five (5) new County Commissioner Districts of contiguous territory as nearly equal in population as practicable, and has established them by accurate description of the boundaries of the Districts attached as Exhibit A and made a part of this Resolution. Exhibit A consists of maps and written descriptions of the Districts by reference to Census Tracts and Block Groups. In the event of conflict or inconsistency between the maps and written descriptions, the written descriptions shall prevail.

3. In accordance with Section 124.02, Florida Statutes, the map on page 5 of this Resolution that provides an accurate description of the boundaries of the new Districts shall be published once each week for two (2) consecutive weeks in a newspaper published in Levy County.

4. In accordance with Section 124.02 and Section 124.03, Florida Statutes, the Clerk of Circuit Court and Ex Officio Clerk to the Board shall: (a) attach a copy of this Resolution and the Proof of Publication to the minutes of this Board Meeting; and (b) forward a certified copy of those minutes to the Florida Department of State.

5. The effective date of this Resolution shall be December 31, 2021.

DULY PASSED AND ADOPTED THIS 7th day of December, 2021.

**BOARD OF COUNTY
COMMISSIONERS
LEVY COUNTY, FLORIDA**

ATTEST: Clerk of the Circuit Court and
Ex Officio Clerk to the Board

John Meeks, Chairman

Danny J. Shipp

Approved as to form and legal sufficiency

Nicolle M. Shalley, County Attorney

Exhibit A

Levy County Commission Districts described by Reference to Census Tracts and Census Block Groups

District 1

Contains all 2020 Census Blocks within the following 2020 Census tracts:

12075970104

And also contains the following 2020 Census Block Groups, listed by Census Tract:

12075970103: Blocks 1046-1047, 1057-1067, 1073-1075, 1090-1096, 1098-1107, 1113, 2007-2065, 2073, 2075-2080

12075970502: Blocks 2003-2037, 2040-2062

12075970101: Blocks 1003-1086, 1088-1099, 1101-1102

District 2

Contains the following 2020 Census Block Groups, listed by Census Tract:

12075970103: Blocks 1000-1045, 1048-1056, 1068-1072, 1076-1089, 1097, 1108-1112, 1114-1115

12075970502: Blocks 2000-2002, 2038-2039, 2063-2117, 3000-3055, 3057-3060, 3062-3097, 3104-3105, 3107-3108, 3130, 3131

12075970400: Blocks 2000-2010, 2014-2016, 3000-3037, 3039-3042, 3048-3049, 3053, 3068, 3069

12075970200: Blocks 1000-1024, 1036-1037, 1048-1070, 1073, 2000-2022, 2027-2122, 3000-3128

12075970303: Blocks 1000, 103, 1005, 1007, 1038, 3055, 3056

12075970304: Blocks 1000-1003, 1018-1019, 1026-1027, 1030-1037, 1051, 1056-1057, 2000-2008, 2015, 2018-2024

District 3

Contains the following 2020 Census Block Groups, listed by Census Tract:

12075970502: Blocks 3056, 3061, 3098-3103, 3106, 3109-3129, 3132-3133

12075970400: Blocks 3038, 3043-3047, 3050-3052, 3054-3065, 3070-3079, 3081-3093, 3095-3166

12075970700: Blocks 1000-1061, 2000-2045, 3000-3072, 4037-4047, 4049-4052, 4054-4104, 4111-4112

12075970501: Blocks 1000-1025, 2012-2013, 2061, 2070-2102, 3000-3070

District 4

Contains all 2020 Census Blocks within the following 2020 Census tracts:

12075990000

12075970301

And also contains the following 2020 Census Block Groups, listed by Census Tract:

12075970400: Blocks 1000-1224, 2011-2013, 2017-2294, 3066-3067, 3080, 3094

12075970200: Blocks 1025-1035, 1038-1047, 1071-1072, 1074-1075, 2023-2026

12075970303: Blocks 1001-1002, 1004, 1006, 1008-1037, 1039-1054, 2000-2023, 3000-3054, 3057-3058

12075970304: Blocks 1004-1017, 1020-1025, 1028-1029, 1038-1050, 1052-1055, 2009-2014, 2016-2017, 2025-2028

12075970700: Blocks 4000-4036, 4048, 4053, 4105-4110, 4113-4117

District 5

Contains all 2020 Census Blocks within the following 2020 Census tracts:

12075970600

And also contains the following 2020 Census Block Groups, listed by Census Tract:

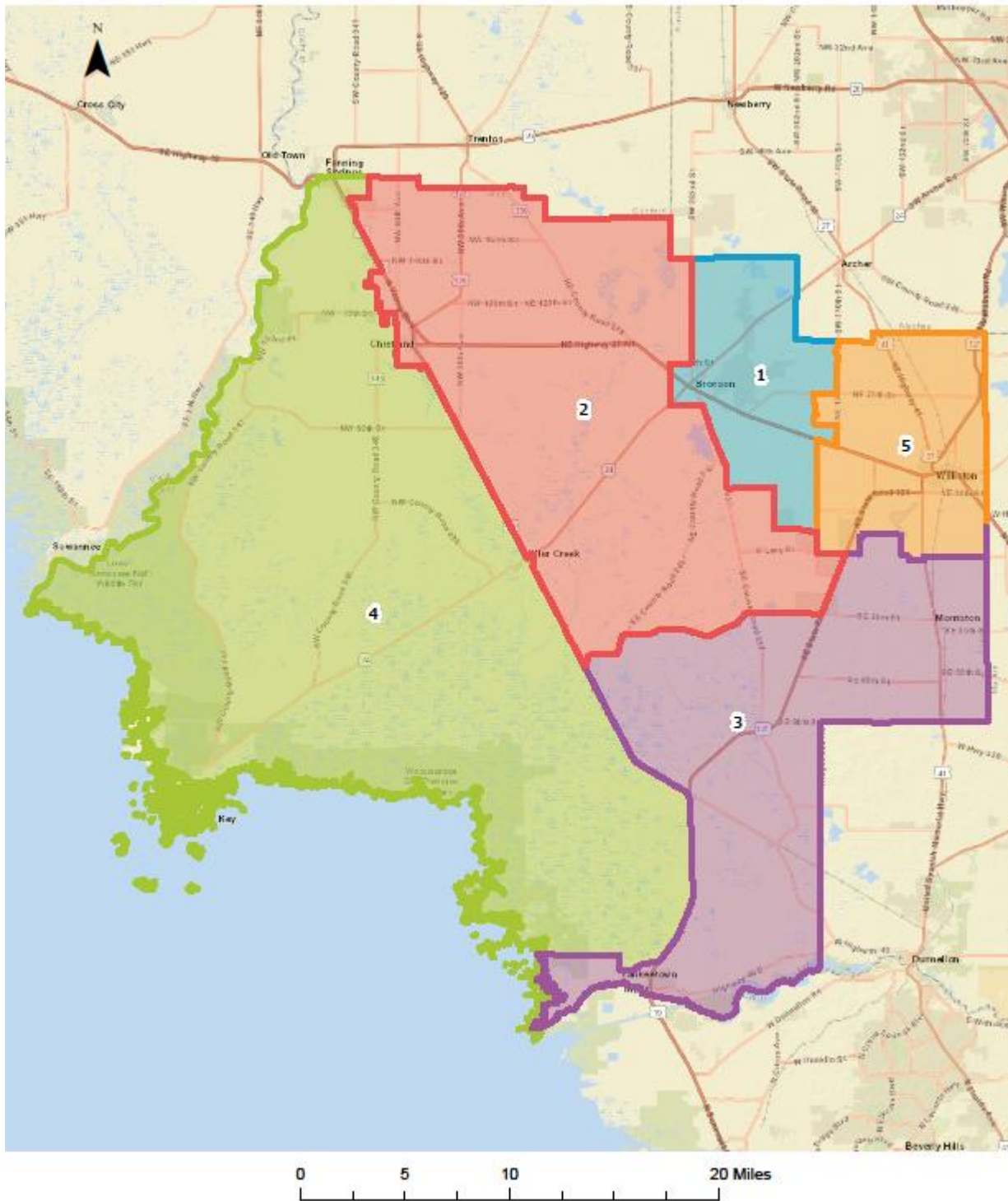
12075970502: Blocks 1000-1131

12075970101: Blocks 1000-1002, 1087, 1100, 2000-2043

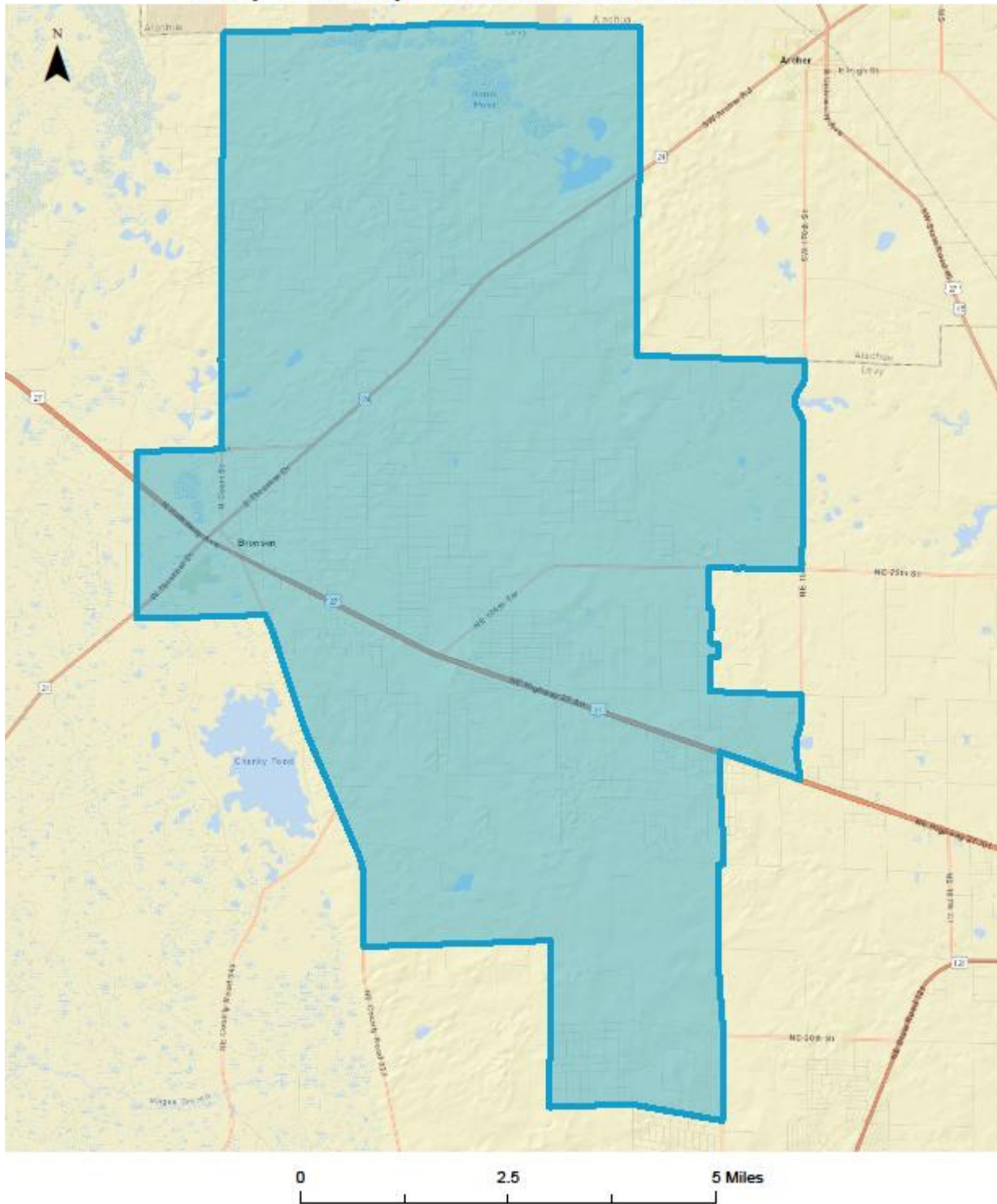
12075970501: Blocks 2000-2011, 2014-2060, 2062-2069

12075970103: Blocks 2000-2006, 2066-2072, 2074, 2081

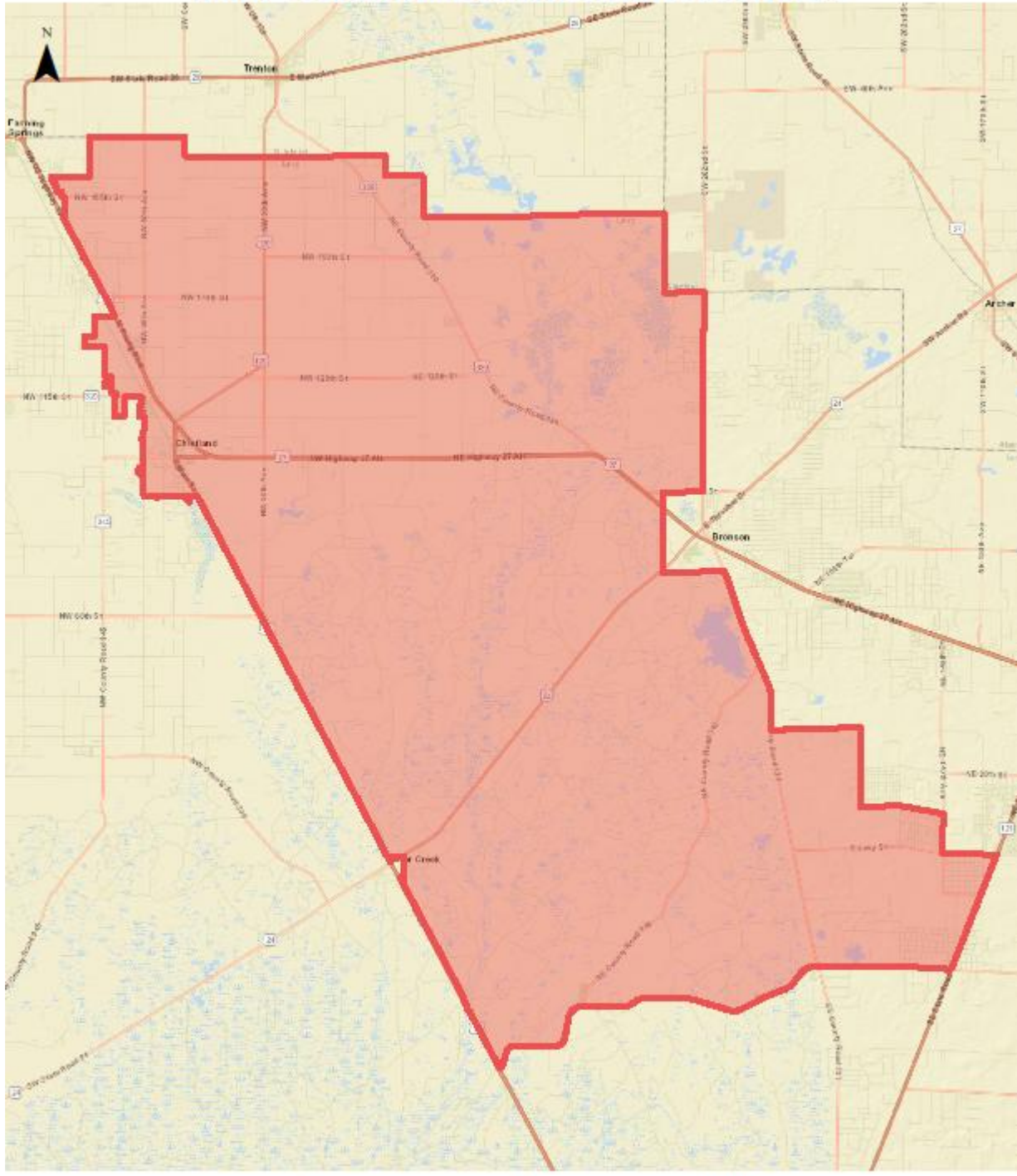
Levy County Commission Districts



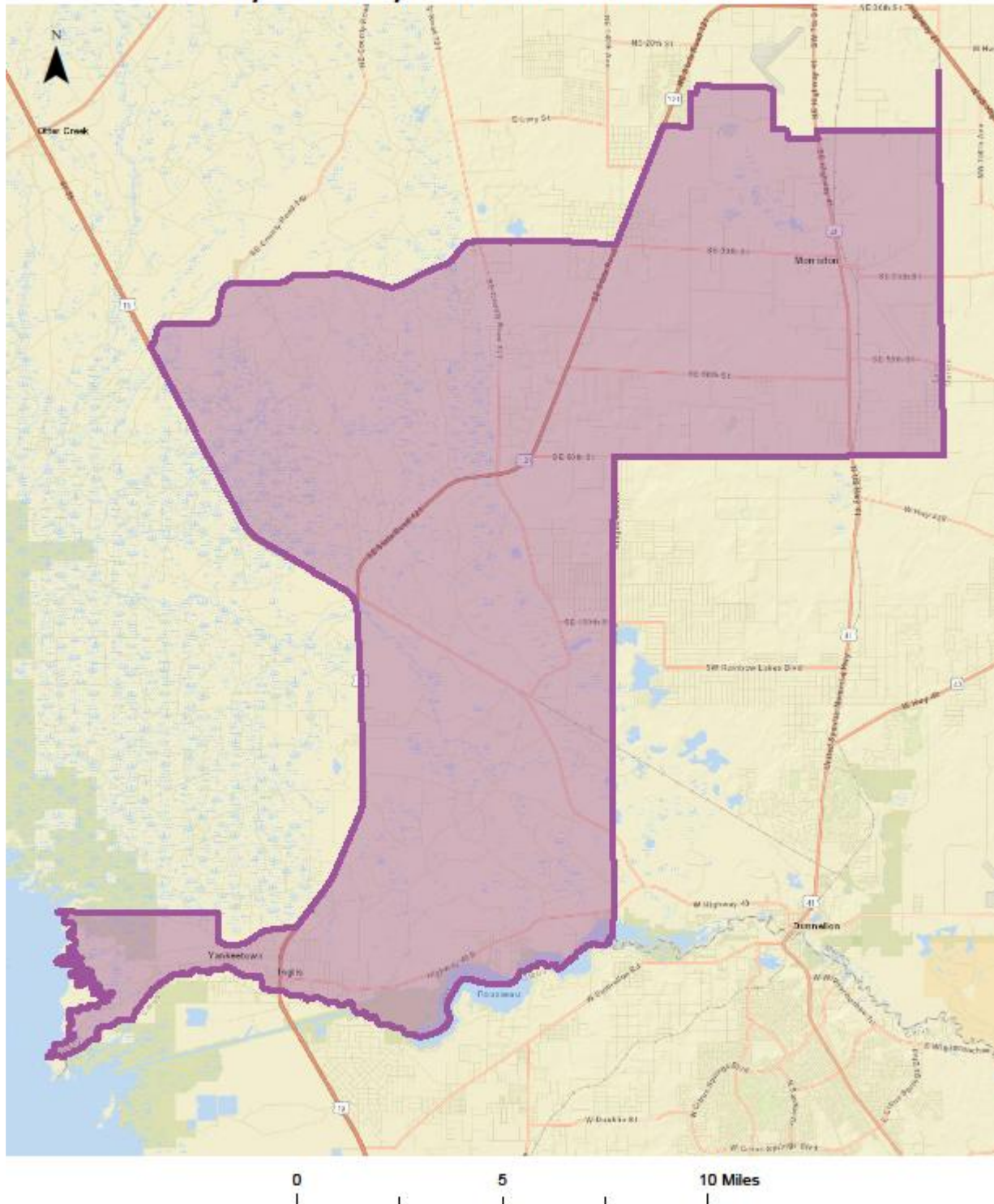
Levy County Commission District 1



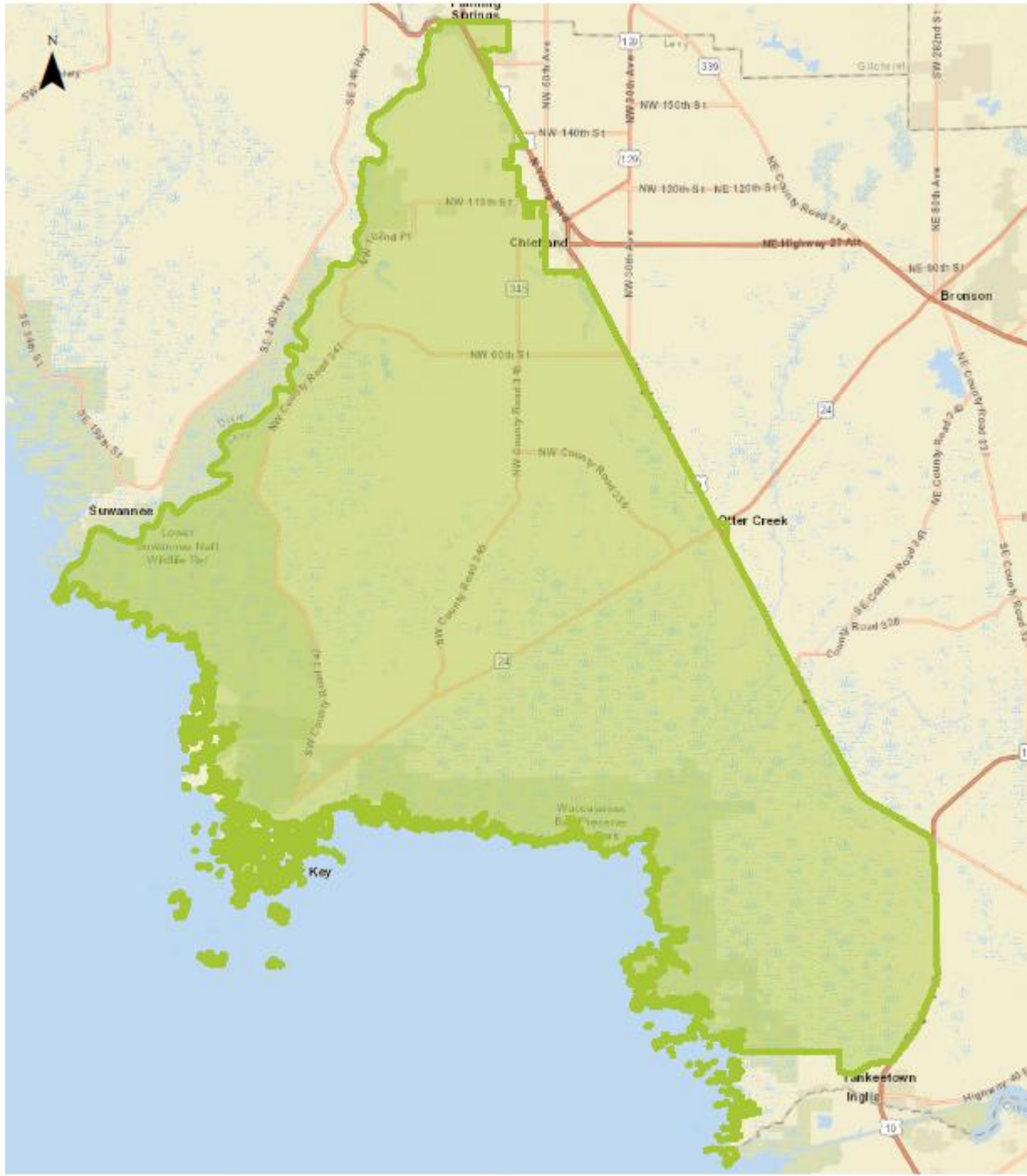
Levy County Commission District 2



Levy County Commission District 3



Levy County Commission District 4



Levy County Commission District 5

