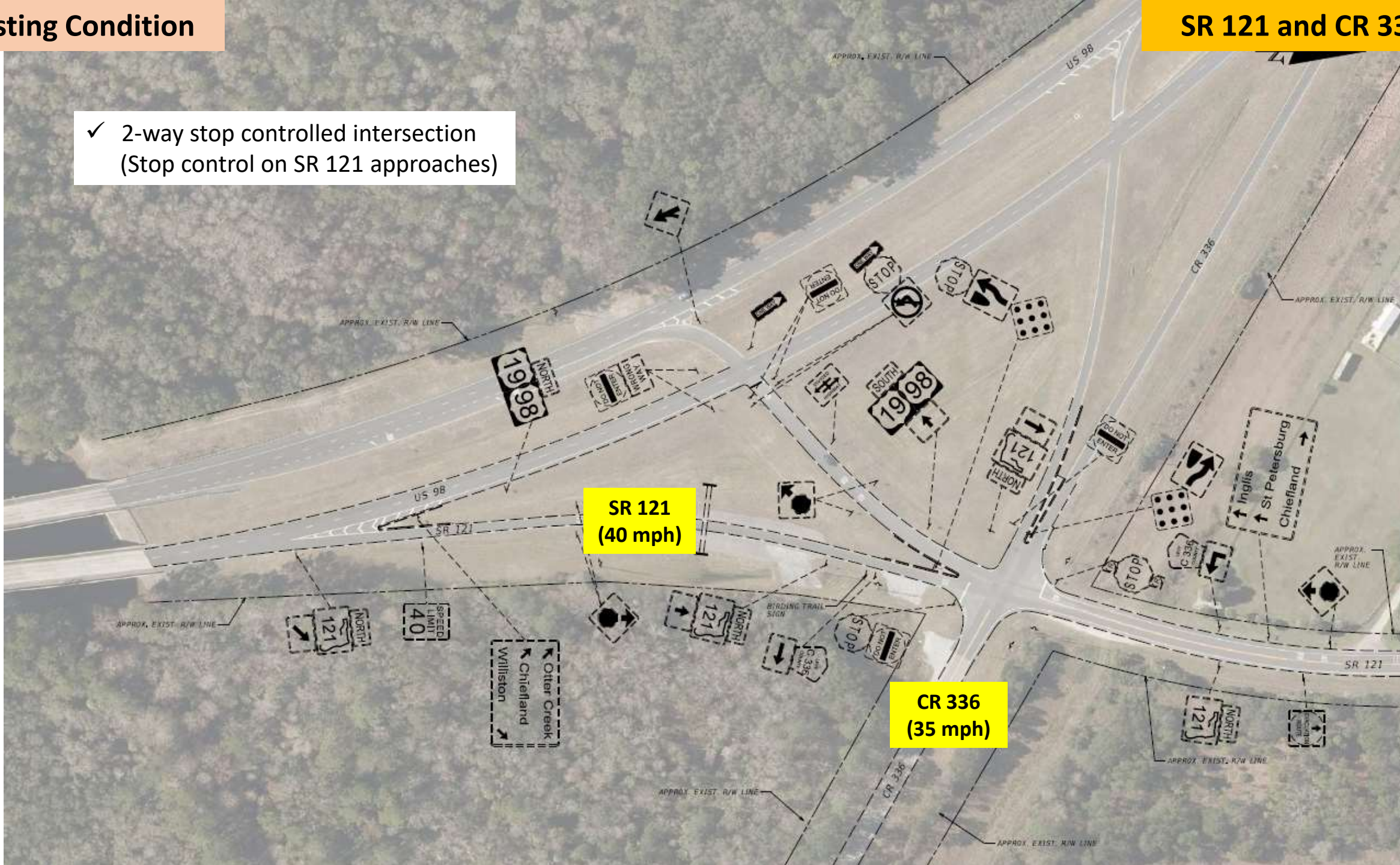


# Existing Condition

# SR 121 and CR 336

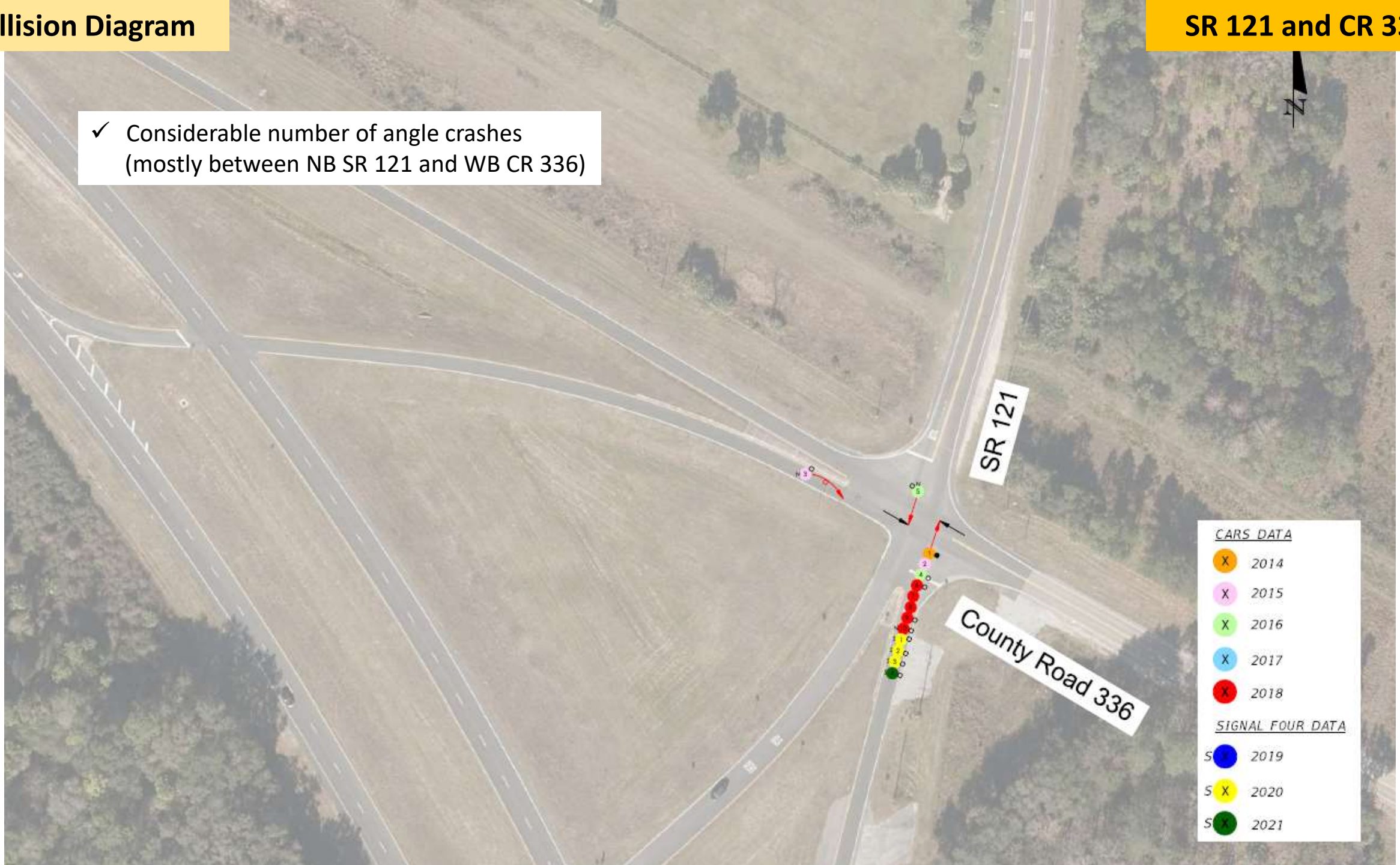
✓ 2-way stop controlled intersection  
(Stop control on SR 121 approaches)



# Collision Diagram

# SR 121 and CR 336

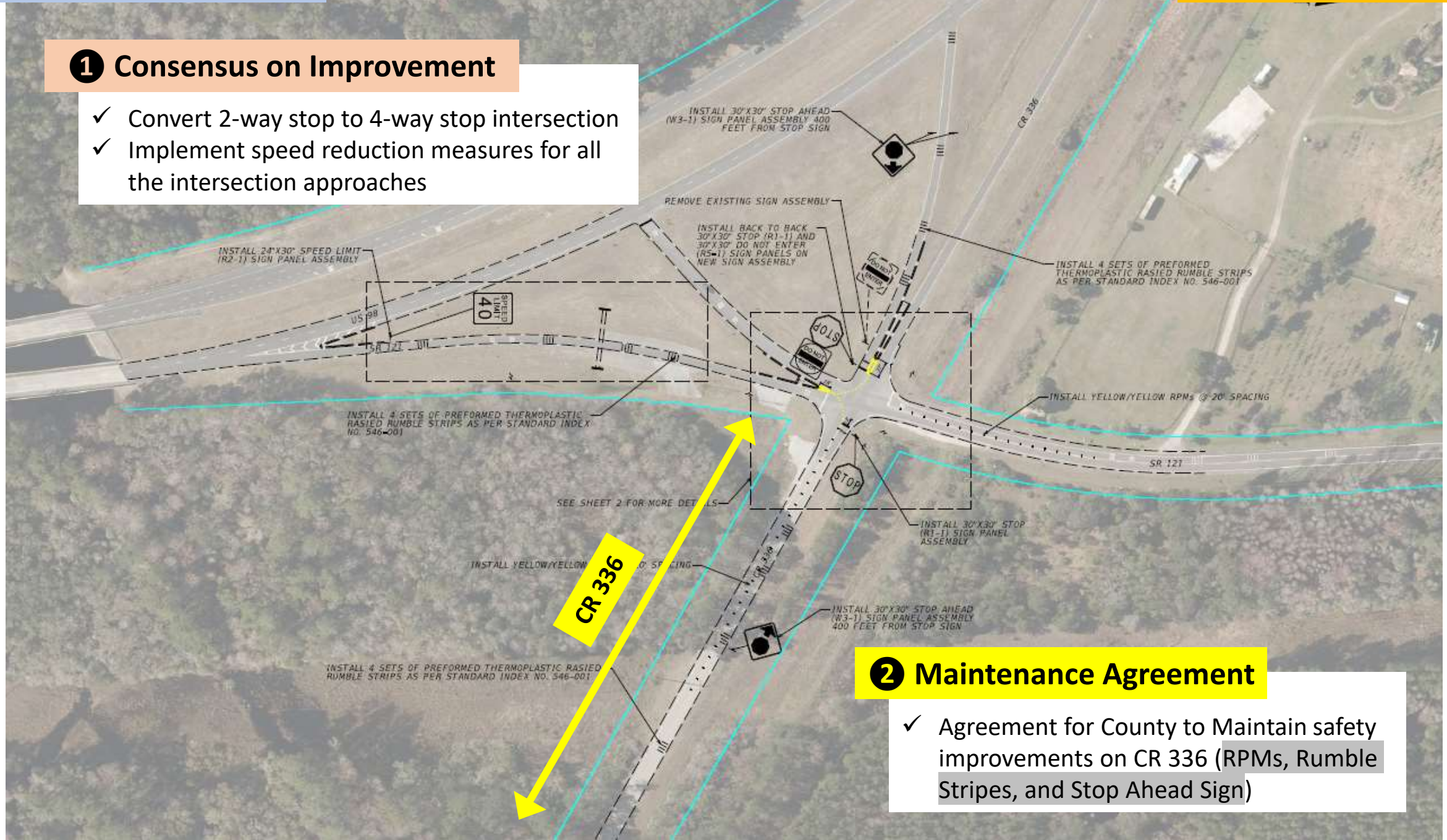
✓ Considerable number of angle crashes  
(mostly between NB SR 121 and WB CR 336)



CARS DATA	
X	2014
X	2015
X	2016
X	2017
X	2018
SIGNAL FOUR DATA	
S	2019
S	2020
S	2021

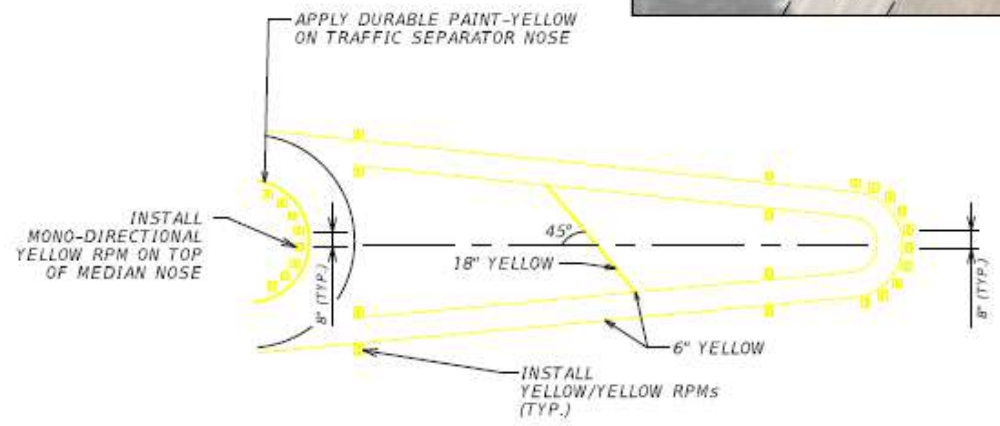
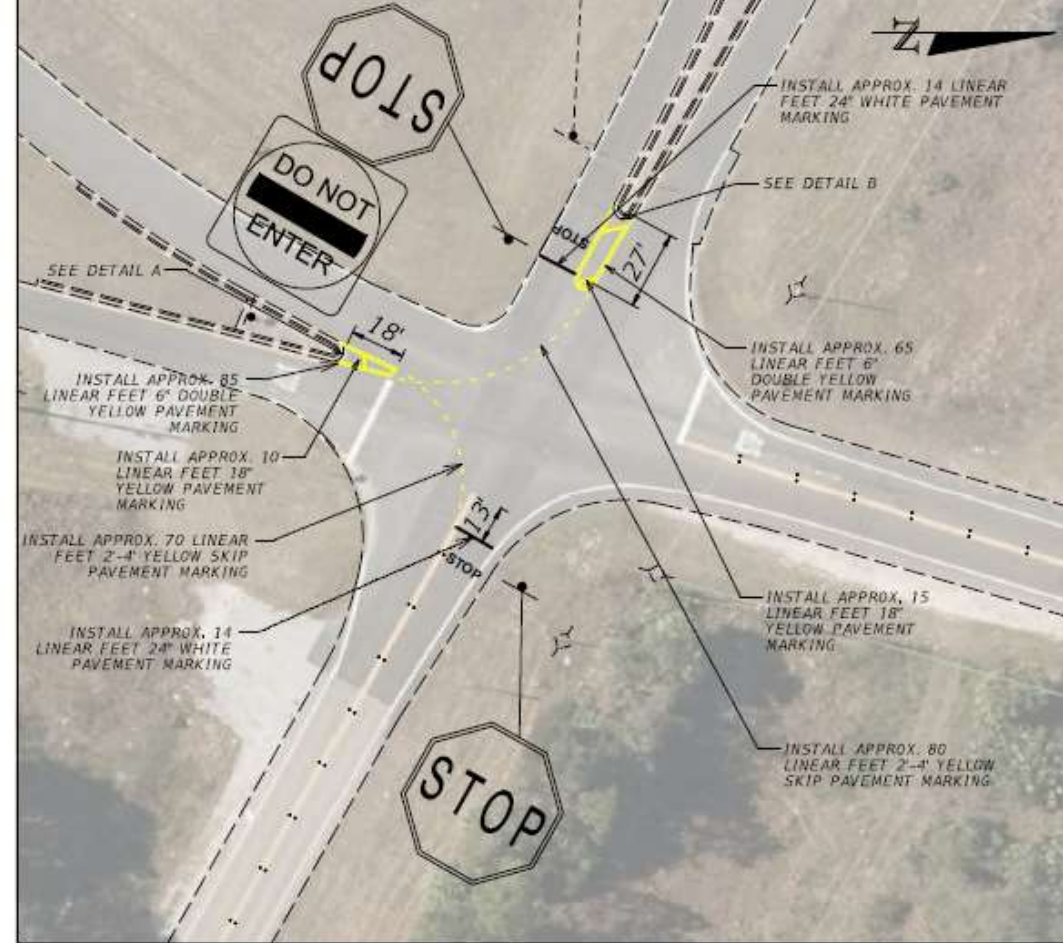
## 1 Consensus on Improvement

- ✓ Convert 2-way stop to 4-way stop intersection
- ✓ Implement speed reduction measures for all the intersection approaches

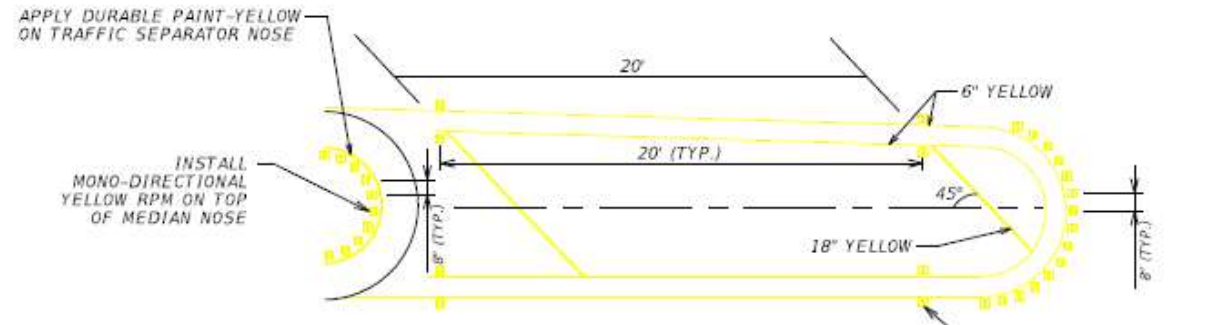


## 2 Maintenance Agreement

- ✓ Agreement for County to Maintain safety improvements on CR 336 (RPMs, Rumble Stripes, and Stop Ahead Sign)



**DETAIL A**



**DETAIL B**