

SPA
SKATEPARKS

with



NEWLINE
SKATEPARKS



TEXAS'S PREMIER MUNICIPAL SKATEPARK DESIGN-BUILD TEAM

ABOUT US



Let Us Introduce Ourselves

SPA Skateparks with New Line Skateparks is a full service design and construction team specializing in integrated concrete skateparks and other progressive wheeled sports environments. With nearly 300 highly recognized projects around the globe, we are proud to serve as one of the world's longest running and most experienced skatepark specific design-build teams.

Our staff is comprised of registered landscape architects, engineering experts, graphic designers and construction professionals who are passionate active skateboarders. This passion inspires us to deliver cutting edge designs and authentic finished environments that create a meaningful connection between youth and the communities in which they live.

We love what we do. When we engage a community in the development process we bring a professional, organized, and fun attitude. The design journey is important and our approach is inclusive. We spare no resource to ensure youth and affected stakeholders truly become part of each project solution.



"The SPA/New Line approach to the public input process was very thorough, inclusive and interactive. City staff felt the public input meetings were ran very professionally and efficiently. Feedback from the stakeholders included positive comments and appreciation for allowing them to be 'a part of the project' as well as an increased feeling of ownership because this was 'their design'. We feel the final design is the best possible fit for the user needs as well as the available space and budget."

Curt Randa, Director
Parks and Recreation
City of Cedar Park, TX



Plaza at the Forks, Winnipeg, MB

"The Plaza at the Forks is proving to be one of the top skateboard facilities known to man. This project had the right decisions made from top to bottom: siting, budget, design and construction."
Chad Balcom, SPS Regional Director

Skaters for Public Skateparks
Public Space Award



What We Believe...

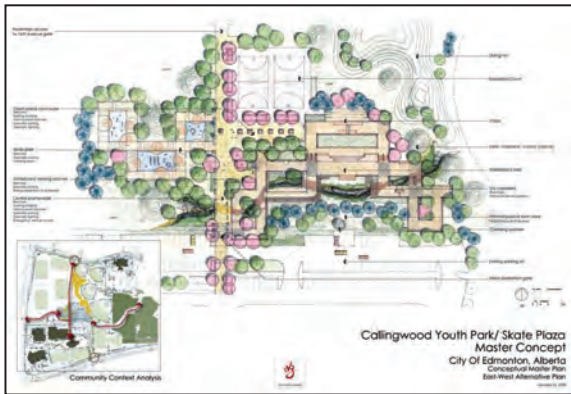
SPA / New Line is committed to the improvement of natural and built environments for all generations. Our goal is to promote environmental quality as a way to protect what we value in our unique region. We carry this philosophy through in skatepark development. Through listening, watching and testing ideas, we create skatepark solutions that work in harmony with existing environments and ultimately lead to fully integrated places.

Skateparks are changing. The days of the stereotypical 'grey square' have long passed as a new era of concrete facility design responds to much more than purely function. When designed and constructed with strong community input and sensitivity to the surrounding context, skateparks not only become beloved destinations for local youth but celebrated public spaces for all to enjoy!



Services... The Art of Shaping Space

Planning- SPA/NLS provides planning expertise to municipal governments and community organizations for parks and recreation master planning as well as individual project developments. Over the last decade our team has participated in a number landmark planning studies for skatepark/wheeled sports networks across North America and Europe. Whether it be site selection, feasibility studies, fundraising programs, or long term facility development strategies, we strive to offer the best mix of qualified personnel and specialized resources for each unique planning challenge.

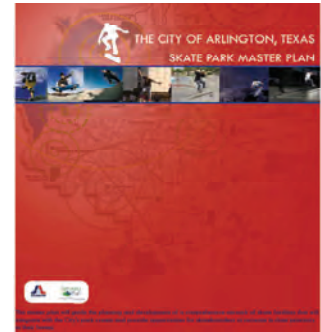


— Collingwood Youth Park
Concept Master Plan
Edmonton, AB

Site Selection Boards
Arlington, TX —

Public Consultation - SPA/NLS provides comprehensive consultation services to facilitate community input in the design of skateparks and other progressive public spaces. As passionate skateboarders and avid park users ourselves, we know how important participation by youth and other members of the community will be to the long term success of each project. No matter what project size, we deliver a custom tailored program of hands-on, interactive design workshops and public presentations facilitated by principal members of our team. Outside of our scheduled meetings, youth and other stakeholders are encouraged to continue to submit written comments, sketches, pictures etc. through our specially developed custom web portal for immediate and ongoing feedback. Overall, we believe engaging the community in a meaningful way is the single most critical aspect of any skatepark design journey and a key factor to our team's continued success.

1st design workshop - Austin, TX
Pre-construction community info session - North Delta, BC —



City-Wide Skatepark
Master Plan
Arlington, TX

Texas Recreation and Parks
Society
Planning Excellence Award

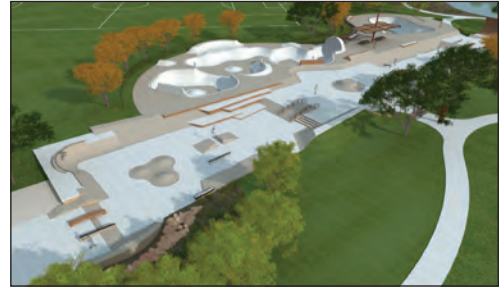




Services... The Art of Shaping Space

Design - SPA/NLS designs award winning municipal concrete skateparks and other wheeled sport environments that continually set the bar for international skatepark development. From day one, we have chosen to think outside the 'concrete square' by leading the industry in introducing a site and community-specific design approach, integrated art/sculptural installations, green/sustainable development initiatives, CPTED principles, innovative materials and aesthetic detailing, progressive lighting schemes, skateable donor recognition signage, and architecturally striking skatepark roof structures. We believe that every project and community has a unique 'story' that can be told through authentic and enduring skatepark architecture. To realize our unique designs, we take great pride in delivering photorealistic 3D facility modeling, animated project 'fly-through' experiences, and State-certified technical drawings to ensure complete project understanding and a thorough construction process for each park.

Construction - SPA Skateparks is Texas's most experienced provider of large-scale municipal skatepark construction services - serving as the General Contractor on a significant portion of the designs completed by our team. Whether it be complete turnkey project solutions or specialty services/products, we are recognized as a leader in the development of site-built concrete skatepark construction technology and practices. Our team has also worked hard to lead the industry in cost and schedule control, safety, and concrete quality accreditation - with a guarantee of design-build budget certainty, on-time project performance, and a ACI (American Concrete Institute) certified team members overseeing shotcrete operations. Finally, SPA Skateparks is fully bonded and insured and employs approximately 20 dedicated field staff leading municipal skatepark projects across the State.



NE Community Skatepark - Frisco, TX



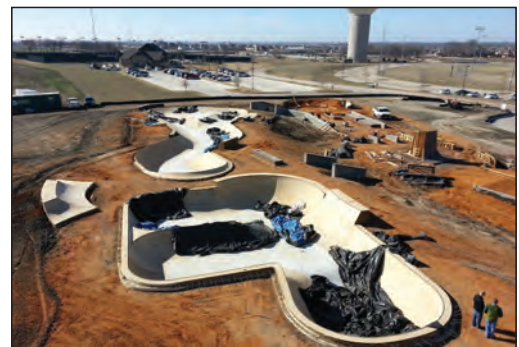
Austin House Park Plaza - Austin, TX



Roanoke Skatepark - Roanoke, TX



Vandergriff Skate Plaza - Arlington, TX



McKinney Skatepark - McKinney, TX

Youth Park Design Philosophy....

SPA / NEW LINE has worked extensively in the planning, design and construction of concrete skateparks, BMX parks, mountain bike courses and other progressive 'casual recreation' facilities. Although this emerging area of recreation is not new, the participation levels associated with inline, BMX, mountain biking and skateboarding have climbed to exceptional levels over the last 15 years.

The inclusion of 'Action Sports' in the planning process benefits the whole community by making children, youth and adults that participate in these activities feel valued. Developing a youth park strategy that includes action sports programs and facilities will introduce new experiences and challenges for a broad demographic that is often difficult to engage and/or overlooked in community parks planning.



Developing a successful youth park design requires a consultant to think and act in a way that respects the desires of future park users. This respect must be balanced with an understanding of construction tolerances, safety standards, community needs, security, and budget. SPA / NLS has a diverse and qualified staff who consistently seek new ways to achieve the expectations of the target user group while setting realistic goals, limits and deadlines.

FEATURE PROJECTS



NE Community Skatepark *Frisco, TX* Destination Park

The Northeast Community Skatepark in Frisco, TX is a destination level, world-class all-wheeled mecca designed to accommodate users of all ages and skill levels. With over an acre of carefully detailed skateable terrain, this skatepark has A LOT OF EVERYTHING... FOR EVERYONE. The park consists of 3 main areas: the central Plaza, expansive modern Flow Complex, and competition-level Vert Bowl. The terrain experience is complimented by a state-of-the-art lighting system, significant integrated viewing and rest areas, custom sculptural features, stunning landscaping and mature oak trees, and a network of pedestrian linkages to the greater site's amenities (soccer fields, children's playscape, fishing pond etc). A big thank you and congratulations to the City of Frisco and their passionate residents for investing in this landmark community-driven project!

Project Budget: ~ \$1,450,000

Timeline: Fall 2015 - Summer 2017

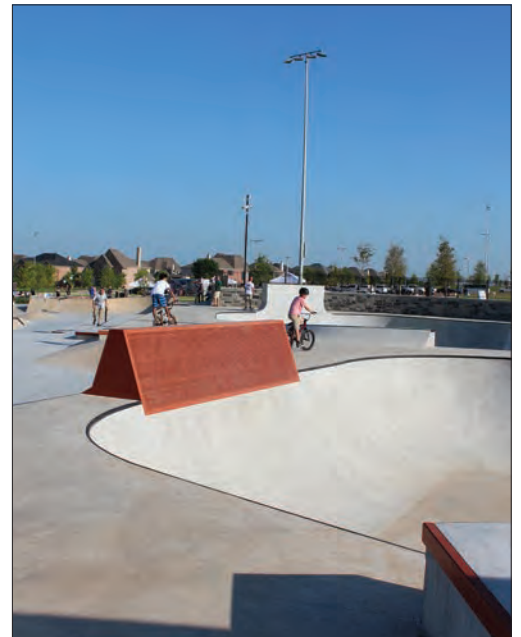
Client: City of Frisco

Team Responsibilities:

- site analysis and public process
- conceptual and final design
- full construction services



NE Community Skatepark - continued...



Cedar Park Skate Plaza Cedar Park, TX Community Park

Located in the newly developed Brushy Creek Sports Park, the Cedar Park Skate Plaza offers a variety of modern plaza and bowl terrain woven seamlessly into the site's natural surroundings. The final design program was developed over a period of 4 months after an extensive outreach initiative with the public and key stakeholders from the local skate community. The result is a highly integrated skate facility that provides a distinct sense of place for local youth (and the young at heart) while also serving as an inviting destination for all park visitors.

Project Budget: \$600,000 Phase 1 (est market value)

Timeline: Spring 2009 - Fall 2009

Client: City of Cedar Park

Team Responsibilities:

- site analysis and public process
- park programming
- conceptual and final design
- full construction



Vandergriff Skatepark Arlington, TX

Destination Park

Arlington, TX's Vandergriff Park Skatepark features three distinct areas of plaza, bowl and modern snake-run youth park terrain designed to be constructed in phases relative to project funding milestones. Skateable features take artistic cues from the iconic City of Arlington logo and the facility's overall layout harmonizes with existing mature trees found throughout the surrounding site. Now complete, the skatepark not only serves as the City's first modern concrete skateboarding facility but one of the largest and most compelling destination parks in the region.

Project Budget: ~ \$1,200,000 (3 Phases)

Timeline: Summer 2012 - Spring 2014

Client: City of Arlington

Team Responsibilities:

- public process
- conceptual and final design
- speciality concrete construction (Phase 1)



Beautiful Mountain Skate Plaza *Beaumont, TX*
Neighborhood Park

SPA / New Line proudly presents the Beautiful Mountain Skate Plaza - located at the City of Beaumont's downtown intersection of Laurel Ave and Magnolia St. The distinctive circular plaza design features a wide selection of versatile urban terrain elements derived from architectural cues found within the adjacent city Events Center Campus and a series of input meetings with local skateboarders and surrounding community members. Since opening, the Plaza has proven to be hugely popular with not only skateboarders, but a greater community of downtown residents and visitors who share Beaumont's evolving urban landscape!

Project Budget: \$ 600,000 (est market value)

Timeline: Summer 2013

Client: City of Beaumont

Team Responsibilities:

- site analysis
- conceptual and final design
- full construction services



Ruben Pier Skate Plaza - Odessa *Odessa, TX Community Park*

The long anticipated Ruben Pier Skate Plaza is now a reality for the growing community of Odessa. Located within the City's expansive Sherwood Park, the Plaza was designed to not only provide local skateboarders with a safe and compelling environment to call their own but to also serve as a place to engage the entire community in the celebration of youth and the life of local skateboarder, Ruben Pier. Along with an assortment of unique 'real street' elements and a one of a kind stand alone bowl unit, the plaza features a combination of locally inspired sculptural features, integrated natural 'green' islands, shaded viewing areas, and a marquee skateable entry sign recognizing the Plaza's namesake.

Project Budget: \$ 845,000 (est market value)

Timeline: Spring 2009 - Fall 2009

Client: City of Odessa

Team Responsibilities:

- site analysis and public process
- conceptual and final design
- full construction



McKinney Skatepark *McKinney, TX* *Destination Park*

Through a 6 month collaborative development process with local youth, surrounding community members, and our design-build team, the City of McKinney has created one of the most progressive youth park developments in the Country. Located in the City's prized Gabe-Nesbitt Park, the skatepark offers over 30,000 sqft of 'Unique by Nature' plaza, obstacle, bowl, and ditch-inspired terrain designed for all ages, abilities, and riding styles.

Project Budget: ~ \$1,800,000

Timeline: Spring 2013

Client: City of McKinney

Team Responsibilities:

- site analysis and public process
- conceptual and final design
- full skatepark construction (aside from bulk earthworks)



McKinney Skatepark - Continued...



Granbury Skate Plaza Granbury, TX Neighborhood Park

At approximately 6,000 square feet, and for all ages and skill levels, the Granbury skate park design takes the general shape of a triangle, consisting of three plaza lanes and a fully encapsulated bowl. The center of the triangle is a large landscaped area, breaking up what would otherwise be an expanse of concrete. The plaza elements include several rails and ledges, a 4 stair set, bank to bank, quarter pipe, and a unique Granbury-themed skateable signage feature closest to the parking lot. The profile of the signage symbolizes the mesa locally named Comanche Peak. Just a few miles from Granbury, this peak is the highest in Hood County and was the meeting ground for Comanche Indians. The words "Granbury Skate Park Dedicated to Keith W. Callahan" on the sign facing the parking lot is a show of thanks for Mr. Callahan's many years as the City's Director of City Services.

The skate park bowl has three pockets with depths from 3.5 feet to 5.5 feet. The metal skate park coping blends into concrete at the shallow section, allowing skaters to roll in to begin their runs. The skate park is connected to the existing walking path that encircles Granbury City Park, allowing skaters easy and safe access.

Project Budget: \$ 385,000 (est market value)

Timeline: Summer 2014

Client: City of Granbury

Team Responsibilities:

- site analysis
- conceptual and final design
- full construction



Roanoke Skate Plaza *Roanoke, TX* *Community Park*

Roanoke TX, the 'Unique Dining Capital of Texas', continues to make it's mark in the DFW Metroplex with the creation of a one of a kind skateable art plaza and pool style bowl in phase 2 of the City's popular Cannon Parkway Park. Nearly 20,000 sqft of meticulously detailed terrain offers opportunities for virtually all ages, skill levels, and riding styles, while the park's skateable 'dinnerware' sculptures guarantee a truly unforgettable visitor experience for users and spectators alike.

Project Budget: ~\$750,000

Timeline: Spring 2015

Client: City of Roanoke

Team Responsibilities:

- conceptual and final design
- construction



Kasmiersky Park All Wheel Plaza *Conroe, TX Community Park*

Once again, SPA Skateparks, in collaboration with New Line took input from Conroe skaters and the local community to develop this unique and innovative design for the Kasmiersky Park Wheeled Sports Plaza. The skatepark will feature integral color concrete, integrated lighting and special viewing areas amongst an exciting collection of street elements, bowl units, and custom sculptural obstacles that reference various local landmarks as well as the rich forestry/timber and rail-way history of the Piney Woods area.

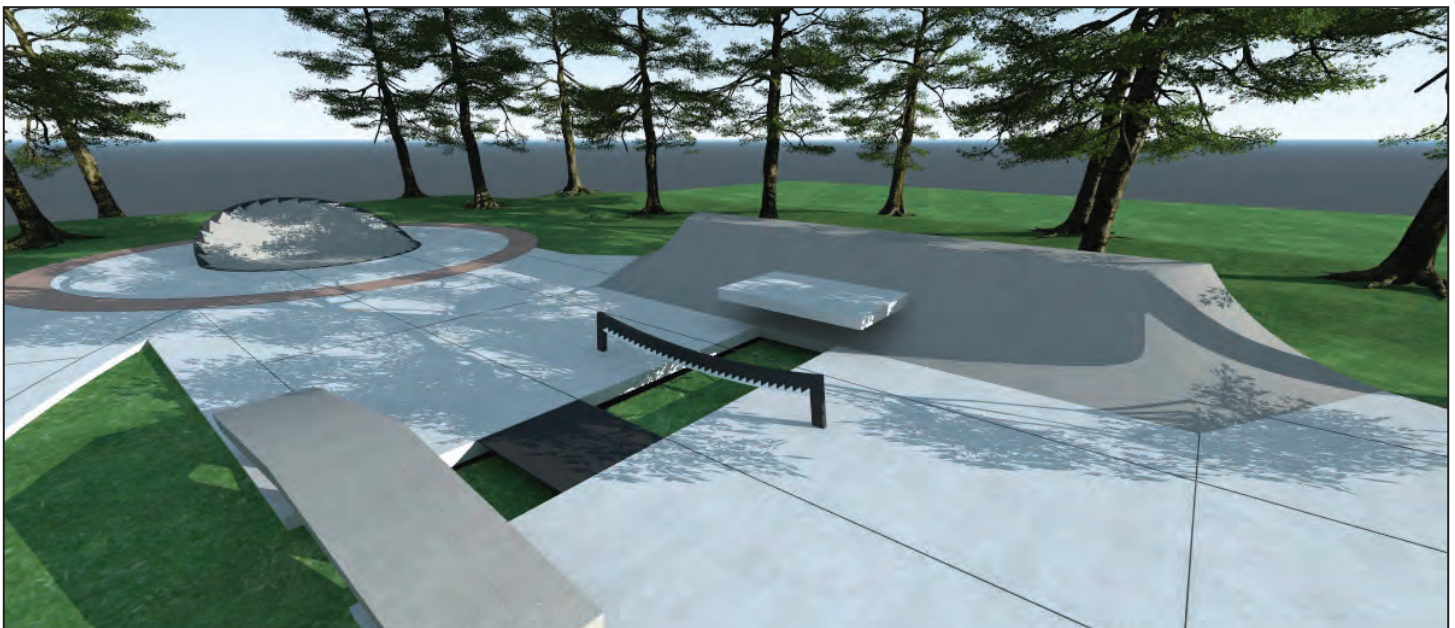
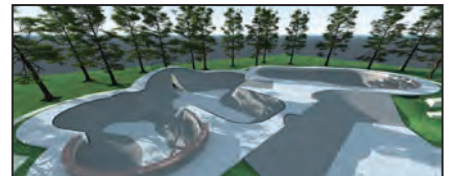
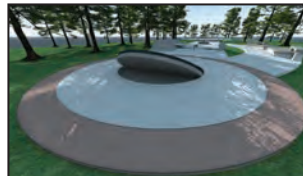
Project Budget: \$ 950,000 (est market value)

Timeline: Summer 2011 - Spring 2012

Client: City of Conroe

Team Responsibilities:

- site analysis
- conceptual and final design
- full construction



Kasmiersky Park All Wheel Plaza - Continued...



Alvin Skatepark *Alvin, TX*
Neighborhood Park

Boasting over 6,000 square feet of modern plaza and transitional terrain, the Alvin Skatepark truly represents a site-tailored facility that enhances an already-popular City park. SPA/New Line responded to the City's vision of creating a safe, sanctioned skateboarding/wheeled sports venue that would integrate with an established passive green space, children's playscape, performance area, and picnic shelter. This includes the implementation of 'skateable' seating/site furnishings, central 'green' area, and architectural detailing that references the colors and signage found in the park's historic rail-way building. Now open, the park serves as one of the area's most popular community recreation attractions.

Project Budget: \$ 350,000 (est market value)

Timeline: Fall 2011 - May 2012

Client: City of Alvin

Team Responsibilities:

- site analysis
- conceptual and final design
- full construction



Boerne Skate Plaza Boerne, TX
Community Park

The Boerne Skate Plaza features approximately 14,000 sqft of custom skateable terrain split within 3 distinct zones: Plaza, Fun Track, and Bowl Complex. With a visual pattern reminiscent of the patch work of a quilt, the plaza area offers a multitude of unique street skating features inspired by the rectilinear forms found within the natural urban environment. This is contrasted by the flowing organic lines seen within the clover bowl and fun track that reference the City's famed Ciblow River. The entire development is finished with a selection of viewing areas and internal green islands designed to provide a pleasant and subtle integration with the surrounding site area.

Project Budget: \$515,000 Phase 1 (est market value)

Timeline: Spring 2009 - Fall 2009

Client: City of Boerne

Team Responsibilities:

- site analysis and public process
- conceptual and final design
- full construction



Beeville Skatepark Beeville, TX
Neighborhood Park

With a diverse combination of stairs, banks, ledges and a snake run inspired in a unique 'B' shaped footprint, the Beeville Skatepark is a smaller-scale neighborhood skatepark promises to deliver LARGE. The final design was developed closely with local youth and other interested community members over a 6 week period. Construction of the facility is now complete.

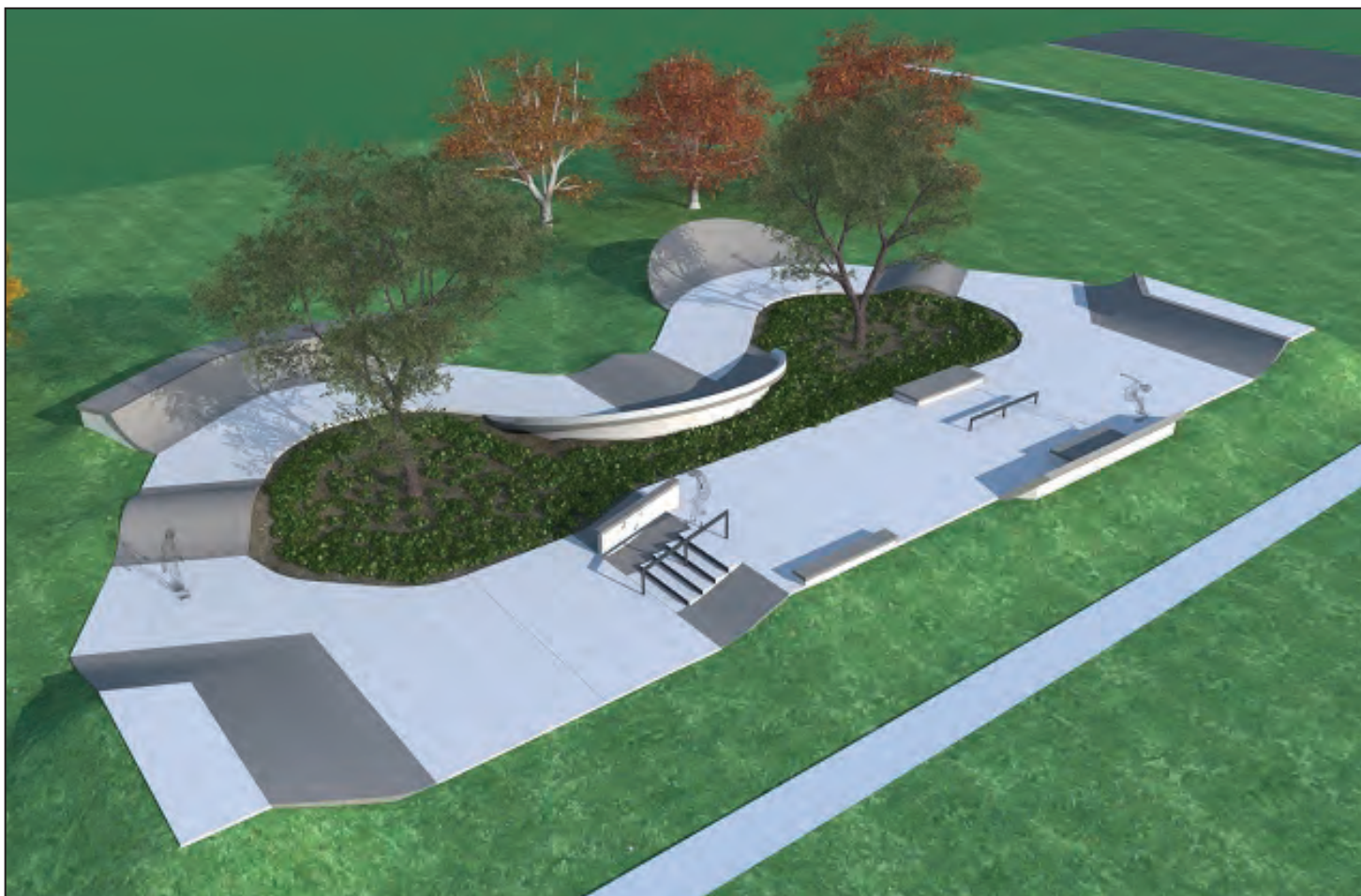
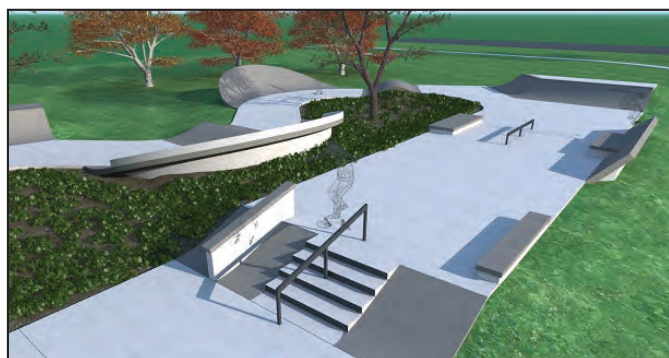
Project Budget: \$ 300,000 (est market value)

Timeline: Fall 2011 - Spring 2012

Client: City of Beeville

Team Responsibilities:

- site analysis
- conceptual and final design
- full construction



Watauga Skatepark Watauga, TX *Community Park - Existing Slab Retrofit Project*

Before it's renovation, the Watauga skatepark consisted of a flat slab and metal prefabricated ramps that were surrounded by an unsightly chain link fence. Over the years the City recognized a steady decline in the utilization of the facility. In 2014, the City took input from local skaters who requested a custom poured in place concrete skatepark that they could call their own. Our team is honoured to have been called upon to rejuvenate the skatepark as the City's design-build contractor. Our Design-Build Team, City staff and a focus group of local skaters began the process of collaborating on what the desired skatepark should look like, and over the course of the next several months, the City disposed of the metal ramps and removed the fence. As a value engineering item, the skatepark still includes much of the already-existing flat slab, which is still in great shape. Geofoam (structural foam) was used as a base in the creation of a number of the plaza features within the park. This type of form fill was strategically used in order to reduce excessive weight on the subsurface. The new facility is now truly inviting to skaters and the public alike, and actually enhances the existing surroundings within the park. The project is a great case study for communities looking to re-purpose an underutilized tennis court slab or rehab an existing metal ramp skatepark.

Project Budget: ~\$300,000 (est market value)

Timeline: Spring 2015

Client: City of Watauga

Team Responsibilities:

- conceptual and final design
- construction



Texas City Skatepark *Texas City, TX* Neighborhood Park

Located in the heart of Nessler Park, the Texas City Skatepark epitomizes the design-build skate park process. Our services began by assisting the City with site selection. Alongside Parks Department staff, an identified list of potential skatepark sites was analyzed and scored based on a list of factors including, but not limited to, existing on-site amenities and community accessibility. Next, skaters and other community members presented their preferences for skate features and other site-contextual items through a series of interactive design workshops led by our principal staff.

The resulting ~ 8,000 sqft skatepark includes a host of key 'street' skating elements such as rails, stairs, quarter pipes and ledges, but also a number of signature features referencing Texas City's aviation and nautical history. Terra-cotta and beige integral colored concrete finish-off the facility to match the neighboring City High School's colors. A system of walking trails, a basketball court and baseball field, and a recently renovated state-of-the-art water park all reside in the surrounding area. The greater site also holds a collection of mature oak trees that provide excellent shade in the Summer months and served to inform our "L" shaped facility layout.

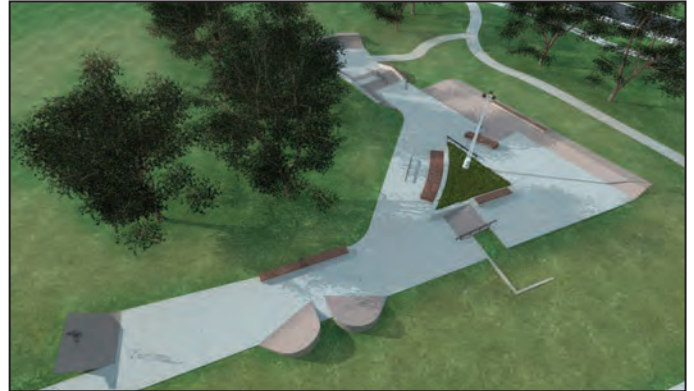
Project Budget: ~\$485,000 (est market value)

Timeline: Summer 2013

Client: City of Texas City

Team Responsibilities:

- site analysis
- conceptual and final design
- full construction



Vogel Creek Skate Spot *Houston, TX* Skate Spot

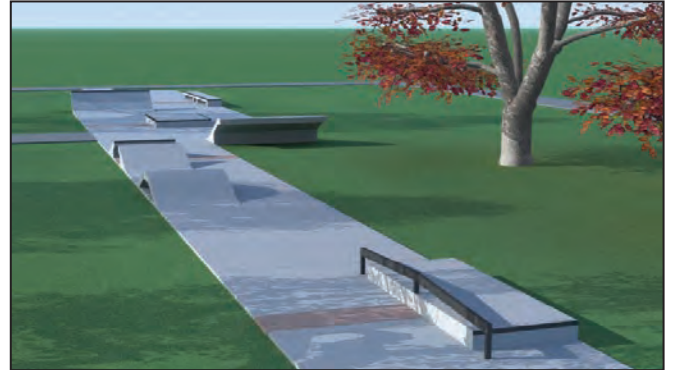
The Vogel Creek Skate Spot (just outside Houston in Jersey Village, TX) truly represents a positive, cooperative effort between a local Water Utility District, their selected Engineering firm and a neighboring subdivision. At roughly 3,000 square feet, the skate spot resembles a skateable pathway connecting an existing jogging trail to the area's water utility district. Suspended artistic features, manual pads, rails, ledges, and the use of integral concrete color create a visually inspiring public space under the shade of mature oak trees. Skaters are active in the middle of the park while allowing other visitors to spectate, play, or jog safely around the facility's perimeter.

Project Budget: ~\$ 175,000 (est market value)

Timeline: Summer 2013

Team Responsibilities:

- site analysis
- conceptual and final design
- specialty concrete construction



Seguin MTR Skatepark *Seguin, TX* Community Park

The highly anticipated Michael Thomas Raetzsch (MTR) Skatepark in Seguin, Texas has received rave reviews from local skaters and the greater region. Located only minutes from San Antonio, New Braunfels and San Marcos, the City of Seguin's MTR Skatepark will most certainly become a regular stop for Texas skaters.

The MTR Skatepark consists of a main line connected by three octagonal plaza areas. On both ends, and caddy corner from each other, are two more elevated octagonal areas. The result is a street skater's dream. Designed for all ages and skill levels, skatepark features include multiple stair cases, down and flat rails, London and China Bank type gaps, boulder detailed ledges, and banked and transitional walls just to name a few. The park's namesake is dominantly installed on the outside of a banked skate feature facing the park's entry.

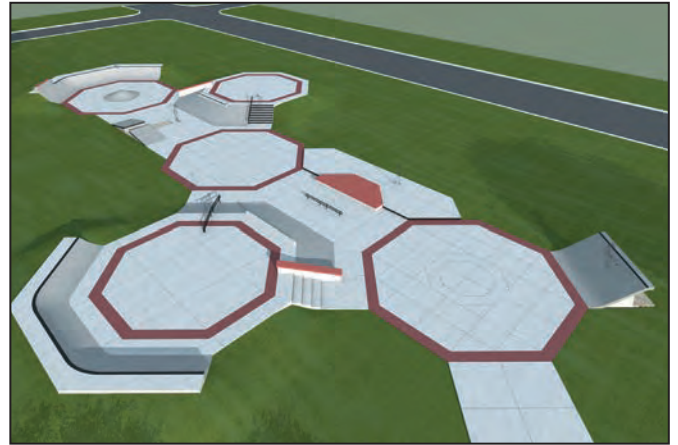
Project Budget: \$ 500,000 (est market value)

Timeline: Summer 2015

Client: City of Seguin

Team Responsibilities:

- site analysis
- conceptual and final design
- construction administration





House Park Plaza *Austin, TX*
Destination Park

After years of lobbying and planning, the City of Austin is now home to the state's premier downtown plaza and bowl complex. Through a series of interactive workshops with Austin's diverse skate and BMX community, a final design program was developed to include a near full spectrum of terrain types, integrated socializing/viewing areas, and an art/sculpture theme centered on the City's iconic live music reputation.

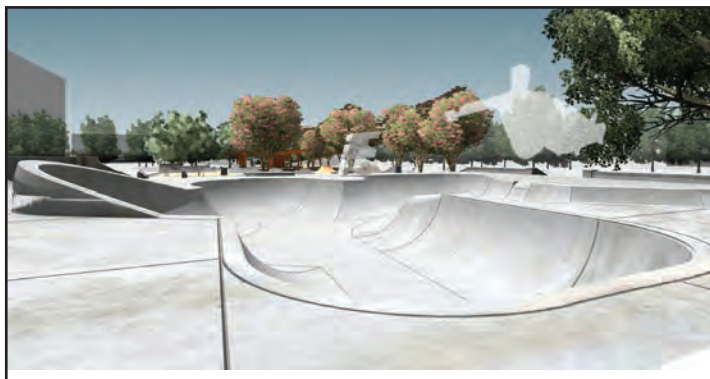
Project Budget: ~ \$1,200,000

Timeline: Jan 2008 - May 2011

Client: City of Austin

New Line Responsibilities:

- public process
- conceptual and final design
- contract administration





NE Metro Skatepark Pflugerville, TX
Destination Park

Travis County's new destination skatepark serves as the highlight of the third and final phase of the area's widely popular NE Metro Regional Park. With approximately 30,000 sqft of highly detailed skateable terrain spread across nearly an acre of green space, the park offers a full spectrum skateboarding/bmx experience in an inviting natural setting characteristic of the Blackland Prairie region.

Timeline: Summer 2009 - Summer 2012

Client: Travis County

Team Responsibilities:

- site analysis
- public process
- conceptual design
- final design





NEW LINE SKATEPARKS INC

NE Metro Skatepark - Continued...



WWW.NEWLINESKATEPARKS.COM

REFERENCES





October 16, 2017

Project Management Team
SPA Skateparks, Inc.
2310 Rogge Lane
Austin, Texas 78723

RE: Northeast Community Park Skate Park

Gentlemen,

On behalf of the City of Frisco Parks & Recreation Department, I would like to thank you all for your tremendous effort and hard work on the Northeast Community Skate Park. The project was a very successful project that was delivered on time and within budget. The construction methodology and meticulous details exceeded our expectations and helped this project truly shine. The residents of Frisco and visitors from the surrounding Metroplex have been raving about this wonderful skate park. This project could not have been as successful without the level of commitment and effort from SPA Skateparks.

The project team's communication and foresight kept the project on track without any major delays. They were able to showcase their ingenuity by proposing alternative construction methods on Frisco's signature piece within the park. Due to their dedication to deliver above and beyond, and excellent craftsmanship, our park now displays a 16 foot tall concrete wave. Their hard work and dedication can be seen anywhere throughout our 47,000 square foot park. We thank SPA Skateparks for the tremendous job they were deliver here in Frisco, and we look forward to future opportunities.

Sincerely,

Shannon Keleher
Director of Parks & Recreation
City of Frisco Texas



May 16, 2013

SPA Skateparks
Attn: Mr. Curtis
1301 Orlando Road
Austin, TX 78733

Dear Mr. Curtis:

With our recently completed project, I wanted to thank you for the professional manner in which your company performed its responsibilities relative to design and construction. The city had significant ambition and expectations related to this project and your team consolidated that direction into a cohesive and tremendous asset for our community.

This was the city's first skatepark; therefore, the level of city staff experience with these types of facilities was limited. The level of expertise and education imparted by the SPA Skatepark staff was crucial in getting the city staff comfortable with and conversant on the intricacies of skatepark utility.

As we progressed into the actual construction, our assessment of SPA Skateparks' competency increased. The level of pride and craftsmanship was evident on a daily basis with our city staff project team marveling at the quality of the steel work. Staff comments including, 'work of art', 'these guys should expand their business to include large commercial sculptures', and 'what great attention to detail' were often overheard.

We are proud of the significant resource that McKinney now has and confident that any other community that chooses SPA Skateparks will be equally impressed.

Regards,

Lemuel P. Randolph
Director
Parks, Recreation and Open Space
City of McKinney, Texas

Parks, Recreation and Open Space

P.O. Box 517 • McKinney, Texas 75070 • Metro 972-562-6080



October 25, 2013

Jamie Curtis, President
SPA Skateparks
2310 Rogge Lane
Austin, TX 78723

Re: Beautiful Mountain Skate Plaza
Beaumont, TX

Dear Jamie,

Since the Grand Opening of our new skate plaza in August, dozens of skaters are onsite daily to experience the great design and quality of Beaumont's one and only skate plaza. You and your team listened to the local skaters and developed a skating plaza that incorporated everything they wanted within our budget.

It was a pleasure working with you and your team. Your commitment to make sure that every aspect of the project met your standards of quality and your attention to detail resulted in a one of a kind skateable streetscape far exceeding our expectations.

We thank you for your professionalism and look forward to working with you again in the future.

Sincerely

A handwritten signature in blue ink that reads "Brenda Beadle". The signature is fluid and cursive, with the first name "Brenda" and last name "Beadle" clearly distinguishable.

Brenda Beadle
Capital Projects Manager



www.alvin-tx.gov

CITY OF ALVIN

309 W. Sealy Street • Alvin, Texas 77511 • (281) 388-4299 • FAX (281) 388-4367

Parks & Recreation Department

June 11, 2012

To whom it may concern,

It is with great pleasure and enthusiasm that I am writing to endorse SPA Skateparks for their industry leading expertise and delicate attention to detail regarding the design/build Alvin Skate Park Project. I am Daniel Kelinske, Director of Parks and Recreation for the City of Alvin and the project manager on behalf of the City of Alvin.

From the inception, SPA's level of professionalism, enthusiasm and overall passion for our project was paramount at all levels. The design team took a true interest, from final site selection to sampling our local flavor of skating and BMX freestyle, then sprinkling in a bit of rich history about our City, all brought to life in the overall design. For my opinion, SPA has created a masterpiece of color, texture and a richness that can only be found in Alvin, Texas. They are truly artisans of conception and concrete, taking our budget and maximizing it in a way that adds significant community pride, quality of place and so much more.

I urge you to consider SPA Skateparks when your community calls on you.

Regards,


Daniel Kelinske
Director Parks and Recreation



June 30, 2010

Project Management Team
SPA Skateparks, Inc.
2310 Rogge Lane
Austin, Texas 78723


Re: Cedar Park Skate Park Project

Gentlemen:

On behalf of the City of Cedar Park - Parks & Recreation Department, I would like to take this opportunity to congratulate you on the completion of a very successful project. SPA Skateparks has certainly exceeded our expectations by delivering the project on time, within budget and with a wow factor that has everyone in the community talking about it! SPA Skateparks is also to be commended for their unyielding commitment to safety and the very impressive safety record with this project.

Throughout the project, the positive attitude, communication and teamwork from the SPA Team allowed us to meet the challenges presented and to ultimately have a new 15,000 square foot Skate Park that the community can take pride in for many years to come. We thank you all for the professionalism and enthusiasm shown during this project and look forward to the next project opportunity with SPA Skateparks.

Sincerely,


Curt Randa, Director
Parks & Recreation Department
Cedar Park, Texas, 78613



PARKS & RECREATION DEPARTMENT

December 11, 2009

To Whom It May Concern:

SPA Skateparks constructed the new Ruben Pier Memorial Skate Park at Sherwood Park, in Odessa, Texas. The Skate Park has been a huge success and truly a "gem" in the City of Odessa Parks system. SPA Skateparks provided a superb quality concrete "in-ground" Skate Park that consists of just over 10,000 square feet concrete with 80% of the Skate Park being plaza style and 20% of the Skate Park being a series of bowls. The Skate Park has approximately 70% of the concrete that is integral colored, providing a series of complimentary color schemes that not only makes the Skate Park aesthetically pleasing, but also provides a safety measure as the color changes note transitional areas. The attention to detail, professionalism, quality assurance, pride and enthusiasm that SPA Skateparks provided resulted in a Skate Park second to none. As a final note, the team members of SPA Skateparks performed an incredible demonstration to the 100-plus crowd in attendance at the opening day ceremony.

If you have any questions or need additional information, please contact me.

Sincerely,

Steve Patton
Director of Parks and Recreation
City of Odessa

SP:mmm



*Parks and Recreation
Department*

CITY OF CONROE

March 6, 2012

Yann Curtis
SPA Skateparks
2310 Rogge Ln.
Austin, TX 78723

Re: City of Conroe
Kasmiersky Park
Wheeled Sports Plaza

Dear Yann:

I want to thank you, Jamie and your team for providing a quality product regarding the phenomenal new Wheeled Sports Plaza at Kasmiersky Park. I was very pleased with the cooperation between SPA, Burditt, and the City. The project was completed on time and within the construction budget. I also appreciate the "extras" your firm provided to ensure the City was satisfied with the end product.

I look forward to SPA Skateparks bidding on future projects. Please don't hesitate to use me as a reference for future projects.

Sincerely,

Mike Riggins
Director of Parks and Recreation



City of Austin

Parks and Recreation Department
200 South Lamar Blvd, Austin, TX 78704

November 5, 2012

To Whom It May Concern:

In 2007, the City of Austin engaged New Line Skateparks, Inc. to design a world-class skate and BMX plaza and bowl complex within the city's urban core. The project included a complex site area, significant budget, and high expectations from local user-groups, City staff, and political constituents.

From start to finish New Line provided responsive, professional service that balanced budget limits and important urban design guidelines with the desires of the local skateboarding/BMX community as well as other citizens and visitors who share Austin's vibrant downtown area. New Line's ability to effectively engage the community and translate their input into the final design was especially impressive and the resulting completed facility is exceptional in terms of creativity, functionality, and overall quality.

It was a pleasure to work with the New Line Skateparks team and I would highly recommend their services to other communities.

Sincerely,

Gary Gregson

Project Coordinator

Austin Parks and Recreation

919 West 28½ Street

Austin, Texas 78705

Phone: (512) 974-9475

E-mail: gary.gregson@austintexas.gov

TRANSPORTATION AND NATURAL RESOURCES

STEVEN M. MANILLA, P.E., COUNTY EXECUTIVE



411 West 13th Street
Executive Office Building
PO Box 1748
Austin, Texas 78767
Phone: (512) 854-9383
Fax: (512) 854-4697

November 14, 2012

To Whom This May Concern,

In 2009, Travis County engaged New Line Skateparks, Inc. to design a 'Destination-Level' Concrete Skatepark as part of the third phase of the County's expansive multi-use North East Metropolitan Park.

As part of the design process, New Line Skateparks participated in several community consultations, led the youth design workshops, and tactfully incorporated the input and responses into the final design, to the satisfaction of the many interested user groups, local community, and County staff. The result is a one-of-a-kind, world-class Skateboarding/BMX facility that is exceptional in design and function, well integrated into the larger surrounding park area, and serves a wide range of users, abilities and ages. This skatepark is also unique in that it's currently the largest skatepark in Texas.

We found the staff at New Line Skateparks to be very professional, responsive, and dedicated towards the successful design and completion of this important project, and would have no hesitation working with them again in the future.

Sincerely,



Charles Bergh
Director
Travis County Parks