

SAMARITAN PROPERTY REVISED TREE INVENTORY AND MITIGATION PLAN

March 5, 2024



We made One Change to the original submission:

We doubled our proposed number of replacement trees from 1 x 1.5" to 2 x 1.5" trees per lot.



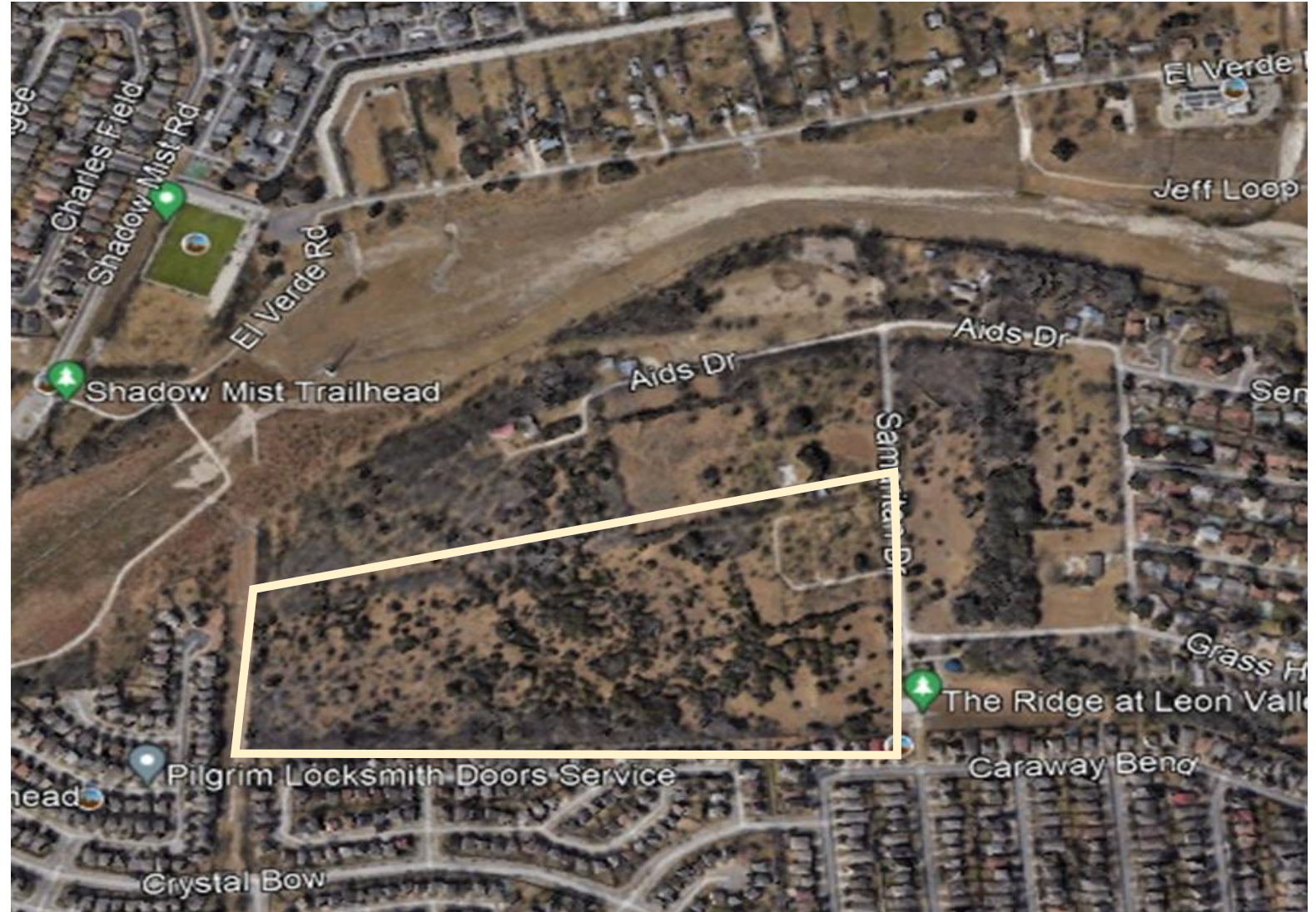
LAND HISTORY

**THIS 1995 AERIAL MAP
SHOWS THE PROPERTY AS
FARMLAND**



LAND HISTORY

CURRENT AERIAL MAP



KEY TREE STATISTICS

TREE INVENTORY SUMMARY		
SIZE	# HEALTHY	# EXEMPT
HERITAGE	6	10
LARGE	752	28
MEDIUM	367	6
TOTAL	1125	44

* EXEMPT = Diseased, Dead, or Hazardous

HERITAGE TREES		
Specie	DBH	Health
Arizona Ash	26	Hazardous
Arizona Ash	27	Hazardous
Ashe Juniper	34	
Ashe Juniper	35	
Ashe Juniper	36	
Hackberry	24	Hazardous
Hackberry	24	
Hackberry	24	
Hackberry	24	
Ligustrum	26	Dead
Ligustrum	27	Dead
Mesquite	26	Dead
Mesquite	27	Dead
Mesquite	27	Dead
Mesquite	35	Dead
Mesquite	36	Dead



DETAILED TREE INVENTORY

SPECIE	OVERALL			HERITAGE		LARGE		MEDIUM	
	TOTAL / SPECIE	HEALTHY	EXEMPT	HEALTHY	EXEMPT	HEALTHY	EXEMPT	HEALTHY	EXEMPT
Arizona Ash	4	0	4	0	2	0	2	0	0
Ashe Juniper	675	671	4	3	0	438	3	230	1
Chinaberry	8	2	6			2	6		
Crape Myrtle	4	4				4			
Elm	8	8				8			
Hackberry	290	269	21	3	1	162	15	104	5
Huisache	20	20				20			
Ligustrum	49	47	2		2	44		3	0
Mesquite	105	98	7		5	70	2	28	
Pecan	6	6				4		2	
TOTAL	1169	1125	44	6	10	752	28	367	6

* EXEMPT = Diseased, Dead, or Hazardous

OUR PROPOSED TREE MITIGATION PLAN

As we showed earlier, the 1995 aerial of this property shows it as bare farmland. There are not any Oak trees on this property. Most of the trees belong to invasive species.

We propose:

1. Clearing the property to its original 1995 state,
2. Plant new healthy trees: 2 x 1.5" trees per lot, and
3. Pay \$50,000 towards the Tree Preservation fund upon construction start.