

PC-2024-16
7205 Huebner
Senna Phase II

Roque Salinas
Economic Development Director
Planning and Zoning Meeting
October 22, 2024

Summary

- Question
 - Consider approval of a final plat of Senna Phase II development
 - This is a 5.949-acre tract of land, being P-46, ABS 664, CB 4446, Poss Landing Subdivision Unit II, located at 7205 Huebner
- Options
 - Approve
 - Deny
 - Conditional approval
 - Declaration
 - Recommend approval

Background

- This property was rezoned from R-1 Single Family to Planned Development District with R-6 Garden Home as it's base zoning district
- Platting is required prior to building construction
- Per the City Engineer the plat meets all the requirements

BCAD Map

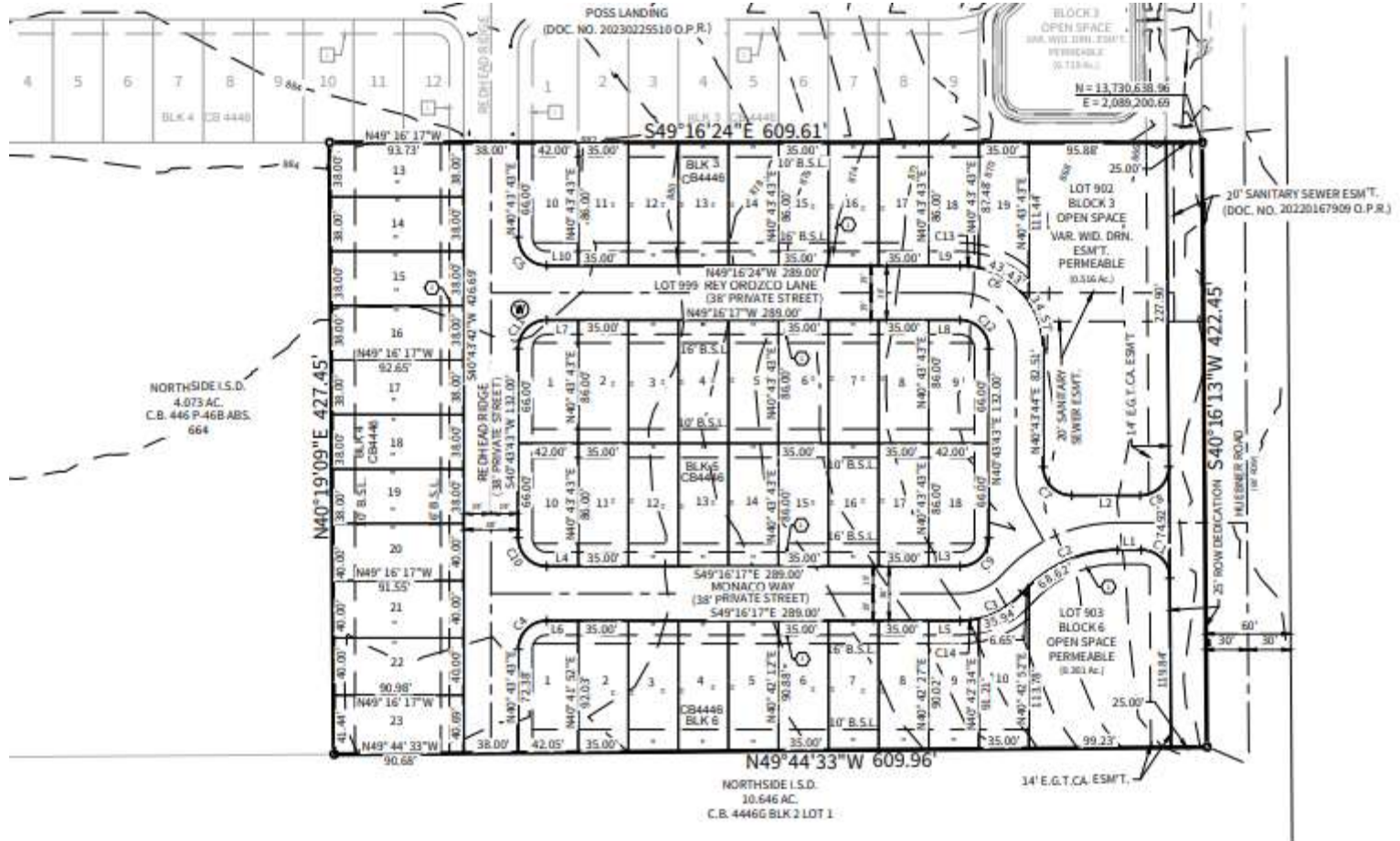


Property

Aerial View



Plat



IN SPACE, (INCLUDING LOT 902, RENTS AND EASEMENTS OF ANY ILTY OF THE PROPERTY OWNERS, ISSIGNS AND NOT THE

49 residential lots

Fiscal Impact

- The development of these lots will increase the ad valorem tax revenue of the city
- The developer has paid all fees associated with the processing of this plat

Recommendation

- Recommend approval of this plat