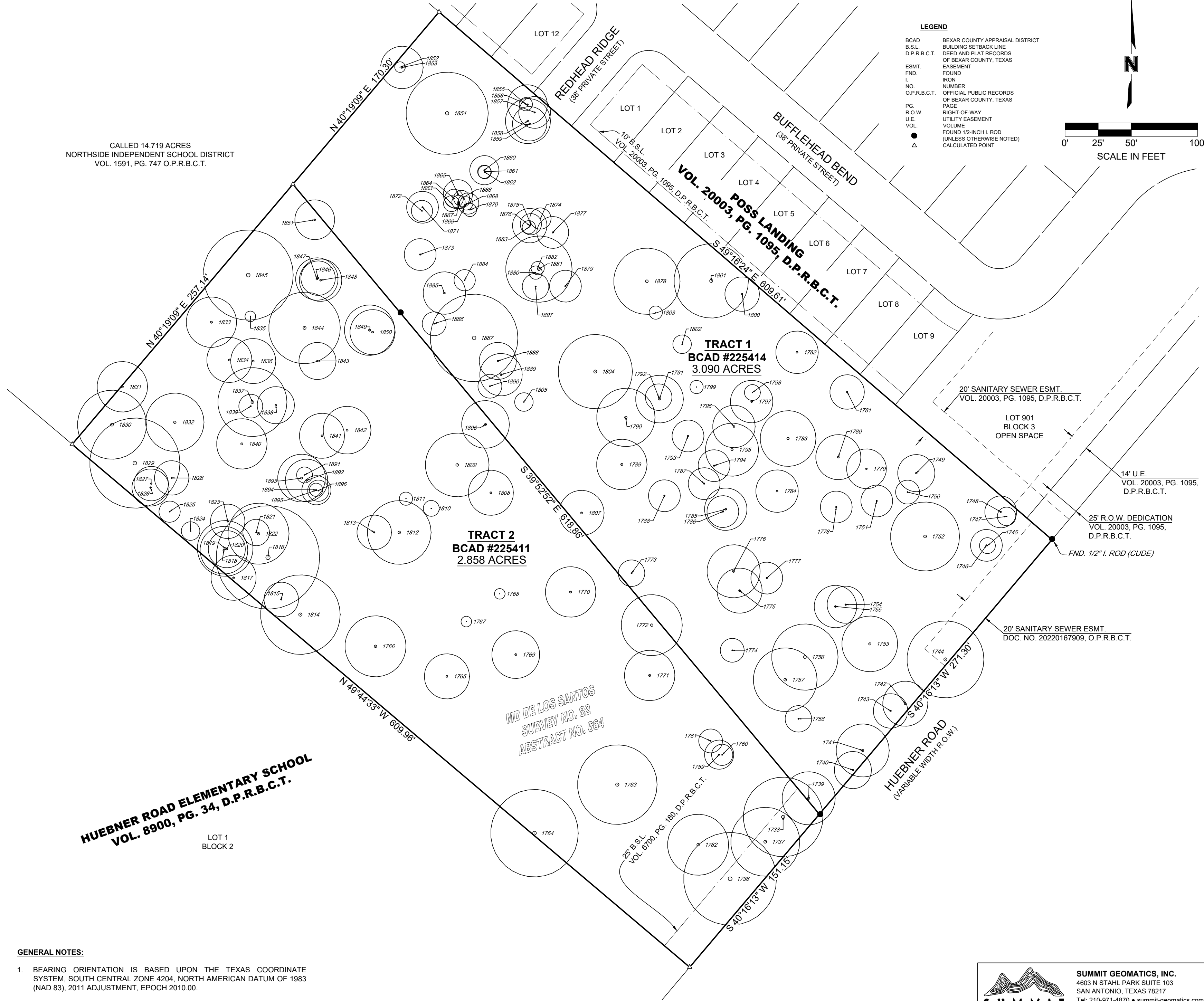


TAG NO.	DESCRIPTION
1736	35" MESQUITE (26-18")
1737	26" MESQUITE
1738	30" MESQUITE
1739	20" MESQUITE
1740	14" HACKBERRY
1741	20" MESQUITE
1742	17" MESQUITE (SICK)
1743	13" PERSIMMON TREE (5-4-3-3-3")
1744	29" MESQUITE (21-16")
1745	6" PERSIMMON TREE
1746	12" PERSIMMON TREE (9-6")
1747	7" MESQUITE
1748	12" MESQUITE
1749	14" PERSIMMON TREE (9-9")
1750	9" MESQUITE (SICK/DEAD)
1751	12" MESQUITE (SICK/DEAD)
1752	26" MESQUITE (19-13")
1753	21" MESQUITE
1754	14" HACKBERRY
1755	16" MESQUITE
1756	25" CEDAR (9-6-6-5-5-3")
1757	24" CEDAR (10-6-6-5-5-5")
1758	10" PERSIMMON TREE (5-5-4")
1759	11" PERSIMMON TREE (7-7")
1760	8" PERSIMMON TREE
1761	9" PERSIMMON TREE
1762	23" MESQUITE
1763	30" CEDAR (23-9-5")
1764	33" LIVE OAK (23-20")
1765	17" PERSIMMON TREE (7-7-6-4-3")
1766	23" LIVE OAK
1767	4" (UNKNOWN) TREE
1768	4" (UNKNOWN) TREE
1769	18" HACKBERRY (SICK)
1770	19" MESQUITE (SICK/DEAD)
1771	19" MESQUITE
1772	23" MESQUITE
1773	10" PERSIMMON TREE (7-6")
1774	9" PERSIMMON TREE (6-5")
1775	17" MESQUITE
1776	20" MESQUITE (13-13")
1777	12" MESQUITE (SICK)
1778	12" MESQUITE (SICK)
1779	15" MESQUITE (SICK)
1780	17" MESQUITE (SICK)
1781	13" MESQUITE (9-8")
1782	16" MESQUITE (12-7")
1783	21" MESQUITE
1784	16" MESQUITE (SICK)
1785	16" MESQUITE
1786	12" MESQUITE
1787	12" PERSIMMON TREE (9-5")
1788	12" MESQUITE
1789	19" MESQUITE (13-11")
1790	22" HACKBERRY
1791	18" HACKBERRY (12-11")
1792	10" HACKBERRY
1793	12" PERSIMMON TREE
1794	12" MESQUITE (8-7")
1795	20" MESQUITE
1796	16" PERSIMMON TREE (12-8")
1797	16" MESQUITE
1798	6" PERSIMMON TREE (4-3")
1799	5" BURR OAK
1800	13" PERSIMMON TREE (9-7")
1801	28" MESQUITE (20-16")
1802	7" GUMBULLY TREE
1803	5" BURR OAK
1804	28" LIVE OAK
1805	7" PERSIMMON TREE
1806	18" HACKBERRY
1807	17" HACKBERRY (13-7")
1808	17" HACKBERRY
1809	24" ASH (15-9-9")
1810	6" (UNKNOWN) TREE
1811	5" (UNKNOWN) TREE
1812	24" LIVE OAK
1813	13" ASH
1814	30" LIVE OAK
1815	13" LIVE OAK
1816	39" CEDAR (23-12-12-8")

TAG NO.	DESCRIPTION
1817	17" MESQUITE
1818	18" MESQUITE (12-11")
1819	21" HACKBERRY (15-12")
1820	14" CEDAR (9-5-4")
1821	10" MESQUITE
1822	23" ASH (19-8")
1823	13" MESQUITE
1824	7" SHUMARD OAK (4-3-3")
1825	8" LIVE OAK (6-3")
1826	14" CREPE MYRTLE
1827	13" MESQUITE
1828	13" ASH
1829	34" MESQUITE (23-22")
1830	26" MESQUITE (21-9")
1831	19" MESQUITE
1832	22" MESQUITE
1833	19" MESQUITE
1834	17" MESQUITE
1835	4" ASH
1836	17" ASH
1837	26" ASH
1838	14" MESQUITE
1839	9" PERSIMMON TREE (5-4-4")
1840	19" MESQUITE
1841	17" HACKBERRY
1842	18" ASH
1843	14" HACKBERRY
1844	27" MESQUITE (20-14")
1845	34" MESQUITE (22-13-11")
1846	13" MESQUITE
1847	16" HACKBERRY (12-8")
1848	16" MESQUITE
1849	19" HACKBERRY
1850	17" MESQUITE
1851	15" MESQUITE
1852	4" LIVE OAK
1853	16" LIVE OAK (11-10")
1854	31" LIVE OAK
1855	5" PERSIMMON TREE
1856	15" PERSIMMON TREE (9-4-4-3")
1857	12" PERSIMMON TREE (6-6-6")
1858	17" LIVE OAK (13-8")
1859	13" LIVE OAK
1860	11" PERSIMMON TREE (7-7")
1861	5" PERSIMMON TREE
1862	5" BLACK OAK
1863	6" BLACK OAK
1864	7" HACKBERRY (5-3")
1865	11" HACKBERRY
1866	6" HACKBERRY
1867	5" BLACK OAK
1868	8" HACKBERRY
1869	5" BLACK OAK
1870	5" BLACK OAK
1871	12" PERSIMMON TREE (7-5-4")
1872	8" PERSIMMON TREE
1873	12" PERSIMMON TREE (8-7")
1874	8" HACKBERRY
1875	8" HACKBERRY
1876	13" HACKBERRY
1877	12" HACKBERRY (9-5")
1878	25" HACKBERRY
1879	12" PERSIMMON TREE (8-7")
1880	5" PERSIMMON TREE
1881	25" HACKBERRY (18-14")
1882	5" PERSIMMON TREE
1883	5" BLACK OAK
1884	8" WHITE OAK
1885	16" HACKBERRY
1886	9" (UNKNOWN) TREE
1887	33" ASH
1888	14" HACKBERRY
1889	16" HACKBERRY
1890	9" PERSIMMON TREE (5-4-3")
1891	6" PERSIMMON TREE
1892	16" PERSIMMON TREE (5-5-4-3-3-3")
1893	18" PERSIMMON TREE (8-8-6-5")
1894	5" PERSIMMON TREE
1895	11" PERSIMMON TREE (8-5")
1896	8" PERSIMMON TREE
1897	10" CEDAR



CALLED 14.719 ACRES
NORTHSIDE INDEPENDENT SCHOOL DISTRICT
VOL. 1591, PG. 747 O.P.R.B.C.T.

TRACT 2
BCAD #225411
2.858 ACRES

TRACT 1
BCAD #225414
3.090 ACRES

HUEBNER ROAD ELEMENTARY SCHOOL
VOL. 8900, PG. 34, D.P.R.B.C.T.

LOT 1
BLOCK 2

GENERAL NOTES:

- BEARING ORIENTATION IS BASED UPON THE TEXAS COORDINATE SYSTEM, SOUTH CENTRAL ZONE 4204, NORTH AMERICAN DATUM OF 1983 (NAD 83), 2011 ADJUSTMENT, EPOCH 2010.00.
- MEASUREMENTS ARE IN U.S. SURVEY FEET. DISTANCES SHOWN HEREON ARE IN SURFACE AND MAY BE CONVERTED TO GRID BY USING THE COMBINED ADJUSTMENT FACTOR OF 1.00017.
- SURVEYOR WAS CONTRACTED TO LOCATE TREES GREATER THAN OR EQUAL TO 4-INCHES. SURVEYOR DOES NOT MAKE ANY GUARANTEE AS TO THE TYPES OF TREES LISTED HEREON. IF CRITICAL, IT MAY BE PRUDENT TO HAVE AN ARBORIST VERIFY THIS INFORMATION.
- THIS TREE EXHIBIT IS NOT A BOUNDARY SURVEY. BOUNDARY LINES SHOWN HEREON WERE TAKEN FROM AN ALTA/NSPS LAND TITLE SURVEY PERFORMED BY CUDE ENGINEERS DATED JANUARY 8, 2024.
- THIS TREE EXHIBIT DOES NOT INCLUDE DEPICTIONS OF EXISTING IMPROVEMENTS.
- FIELDWORK WAS COMPLETED ON FEBRUARY 05, 2024.

LEGAL DESCRIPTION:

TRACT 1: 3.090 ACRES OF LAND IN THE MD DE LOS SANTOS SURVEY 82, ABSTRACT 664, BEXAR COUNTY, TEXAS, OUT OF THAT CALLED 138.72 ACRE TRACT RECORDED IN VOLUME 4219, PAGE 248 OF THE DEED RECORDS OF BEXAR COUNTY, TEXAS.

TRACT 2: 2.858 ACRES OF LAND LOCATED IN THE MD DE LOS SANTOS SURVEY 82, ABSTRACT 664, BEXAR COUNTY, TEXAS, BEING ALL OF THAT CALLED 1.794 ACRE TRACT, LOT 46A OF THE POSS SUBDIVISION RECORDED IN VOLUME 6700, PAGE 180 OF THE DEED AND PLAT RECORDS OF BEXAR COUNTY, TEXAS, AND ALL OF THAT CALLED 1.078 ACRE TRACT RECORDED IN IN DOCUMENT 20210300205 OF THE OFFICIAL PUBLIC RECORDS OF BEXAR COUNTY, TEXAS

LEGEND

- BCAD BEXAR COUNTY APPRAISAL DISTRICT
- B.S.L. BUILDING SETBACK LINE
- D.P.R.B.C.T. DEED AND PLAT RECORDS OF BEXAR COUNTY, TEXAS
- I. IRON
- ESMT. EASEMENT
- FND. FOUND
- NO. NUMBER
- O.P.R.B.C.T. OFFICIAL PUBLIC RECORDS OF BEXAR COUNTY, TEXAS
- PG. PAGE
- R.O.W. RIGHT-OF-WAY
- U.E. UTILITY EASEMENT
- VOL. VOLUME
- FOUND 1/2-INCH I. ROD (UNLESS OTHERWISE NOTED)
- CALCULATED POINT



SUMMIT GEOMATICS, INC.
4603 N STAHL PARK SUITE 103
SAN ANTONIO, TEXAS 78217
Tel: 210-971-4870 • summit-geomatics.com
TBPELS FIRM NO. 10194657

TREE EXHIBIT
TRACT 1 - 3.090 ACRES
TRACT 2 - 2.858 ACRES
SITUATED IN THE
MD DE LOS SANTOS SURVEY NO. 82
ABSTRACT NO. 664
BEXAR COUNTY, TEXAS

SCALE:	JOB NO.:	DATE:	SHEET:
1"=50'	24.0045	02/08/2024	1 OF 1