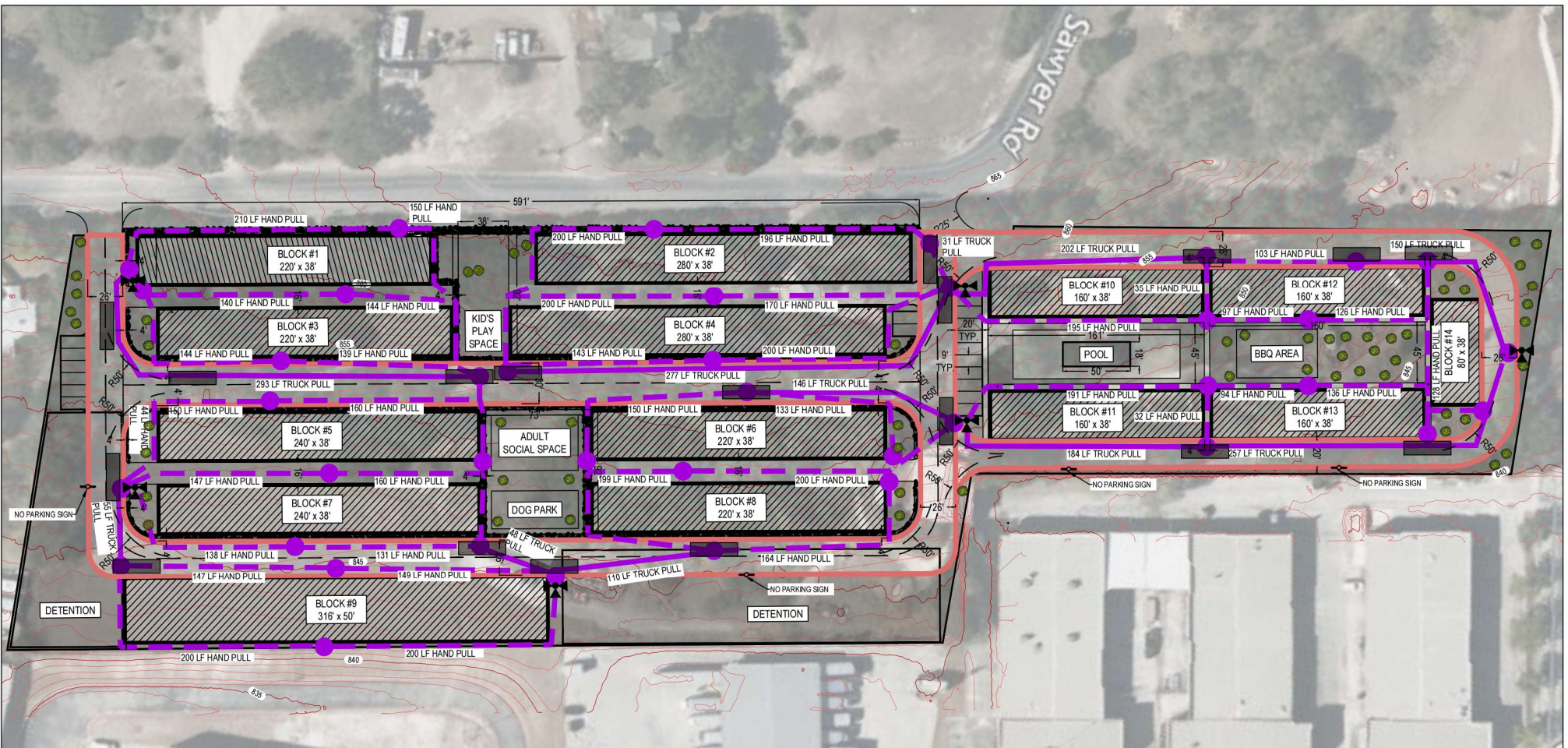


EXHIBIT C (rev.3) – FIRE PLAN



FIRE PROTECTION NOTES:

1. FIRE LANES SHALL HAVE A MINIMUM 2-WAY TRAFFIC WIDTH OF 20-26 FT. WITH A MINIMUM OUTSIDE TURNING RADIUS OF 50 FT., UNLESS OTHERWISE NOTED.
2. FIRE LANES NEXT TO FIRE HYDRANTS OR DESIGNATED FOR AERIAL APPARATUS SHALL BE A MINIMUM OF 26 FT.
3. FIRE LANES SHALL BE DESIGNATED IN ACCORDANCE TO THE LATEST INTERNATIONAL FIRE CODE AND PER APPLICABLE LOCAL AMENDMENTS.
4. FIRE LANES SHALL BE MARKED BY LINES OF RED TRAFFIC PAINT OR DYE A MINIMUM OF 6 INCHES IN WIDTH TO SHOW THE BOUNDARIES OF THE LANE.
5. PROPOSED BUILDINGS ARE SPRINKLERED

NBR OF UNITS: 145 TO 165
 PARKING SPACES: ALL UNITS INCLUDE A DOUBLE GARAGE



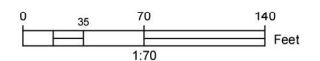
SIGNAGE NOTES:

1. SIGNS SHALL BE STANDARD SIZE 18"x24" AND HAVE RED LETTERS AND BORDER ON A WHITE BACKGROUND.
2. SIGNS SHALL BE MOUNTED WITH THE BOTTOM EDGE OF THE SIGN AT LEAST SEVEN (7) FEET ABOVE GRADE AND AT LEAST TWO (2) FEET FROM CURB EDGE.
3. SIGNS SHALL BE PLACED AS FOLLOWS:
 - A. LESS THAN FORTY (40) FEET: ONE (1) SIGN WITH A DOUBLE ARROW.
 - B. FROM FORTY (40) TO NINETY (90) FEET: TWO (2) SIGNS WITH RIGHT AND LEFT ARROWS.
 - C. FOR ONE HUNDRED (100) FEET OR MORE: THREE (3) SIGNS WITH RIGHT/LEFT AND DOUBLE ARROWS IN THE MIDDLE.
4. SIGNS TO BE PLACED IN ACCORDANCE WITH THE 2012 INTERNATIONAL FIRE CODE AND SAN ANTONIO'S FIRE CODE AMENDMENTS. THE CONTRACTOR SHALL COORDINATE WITH THE FIRE INSPECTOR FOR APPROVED SIGN LOCATIONS.

LEGEND

- FIRE LANE
- FIRE TRUCK HOSE LAY TO HYDRANT (MAX 550')
- HAND PULL HOSE LAY TO TRUCK (MAX 200')
- FIRE HYDRANTS
- TREES
- FIRE TRUCK

6612 AND 6618 SAWYER ROAD
 SITE PLAN #1
 MARCH 2025



STREAMLINE
 ENGINEERING