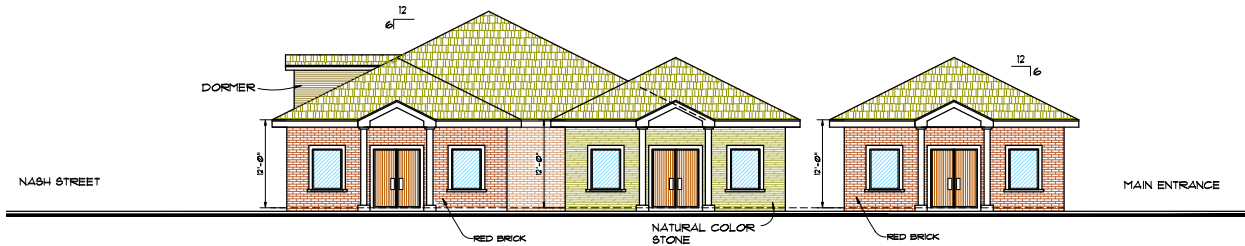




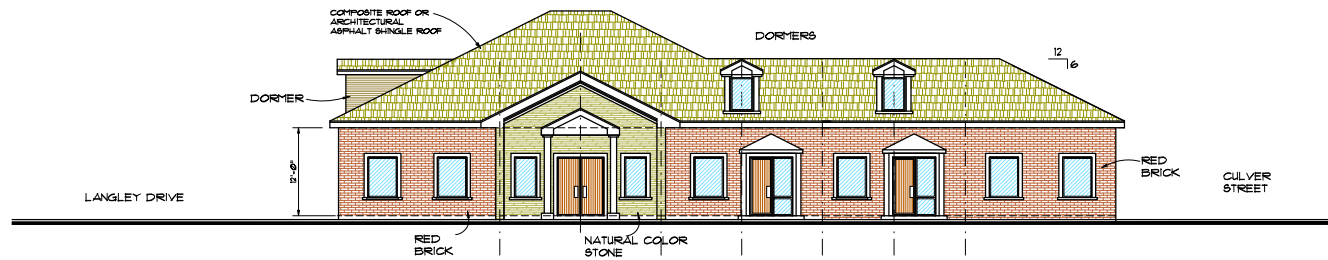
ARCADE, INC.
ARCHITECTS
BUILDING CONSULTANTS
3877 THAYER TRACE
DULUTH, GEORGIA 30096
TEL. (404) 781-2322
ARCADEINC@AOL.COM

Rev. No.	Date	Revision



CULVER STREET ELEVATION (SIDE/FRONT VIEW)

SCALE 1/8" = 1'-0"



NASH STREET ELEVATION (FRONT VIEW)

SCALE 1/8" = 1'-0"

ELEVATIONS

A NEW OFFICE BUILDING FOR:
330 CULVER STREET
330 CULVER STREET
LAURENCEVILLE, GEORGIA 30000

Project No: 25007
Scale: 1/8" = 1'-0"
Drawn By: MF
Date: 5, 19, 2025
Issue: 9, 12, 2025

A-2



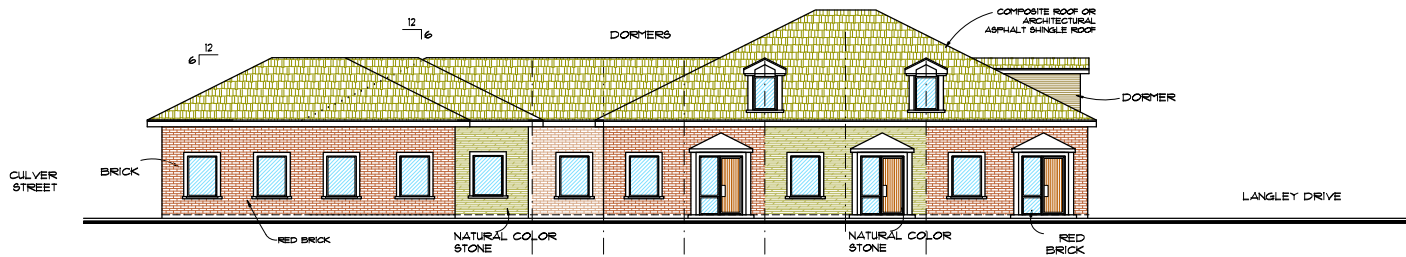
ARCADE, INC.
ARCHITECTS
BUILDING CONSULTANTS
3877 THAYER TRACE
DULUTH, GEORGIA 30096
TEL. (404) 781-2322
ARCADEINC@AOL.COM

Rev. No. Date Revision

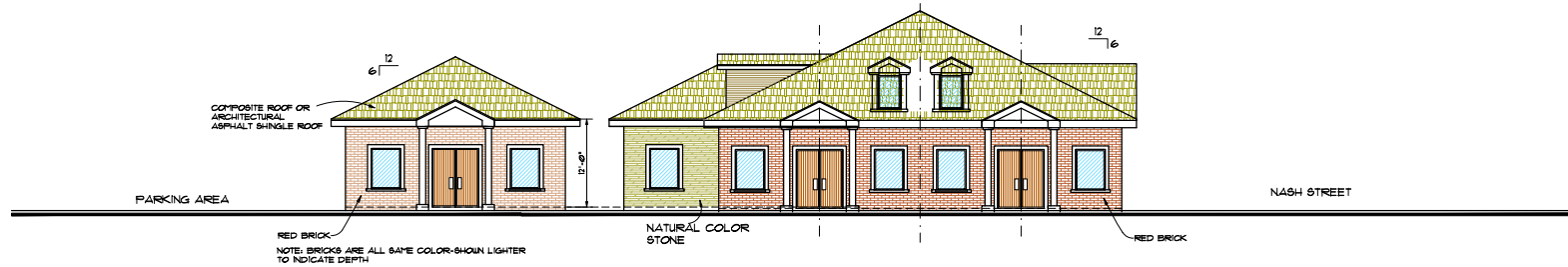
ELEVATIONS
A NEW OFFICE BUILDING FOR:
330 CULVER STREET
330 CULVER STREET
LAURENCEVILLE, GEORGIA 30000

Project No: 25007
Scale: 1/8" = 1'-0"
Drawn By: MF
Date: 5, 19, 2025
Issue: 9, 12, 2025

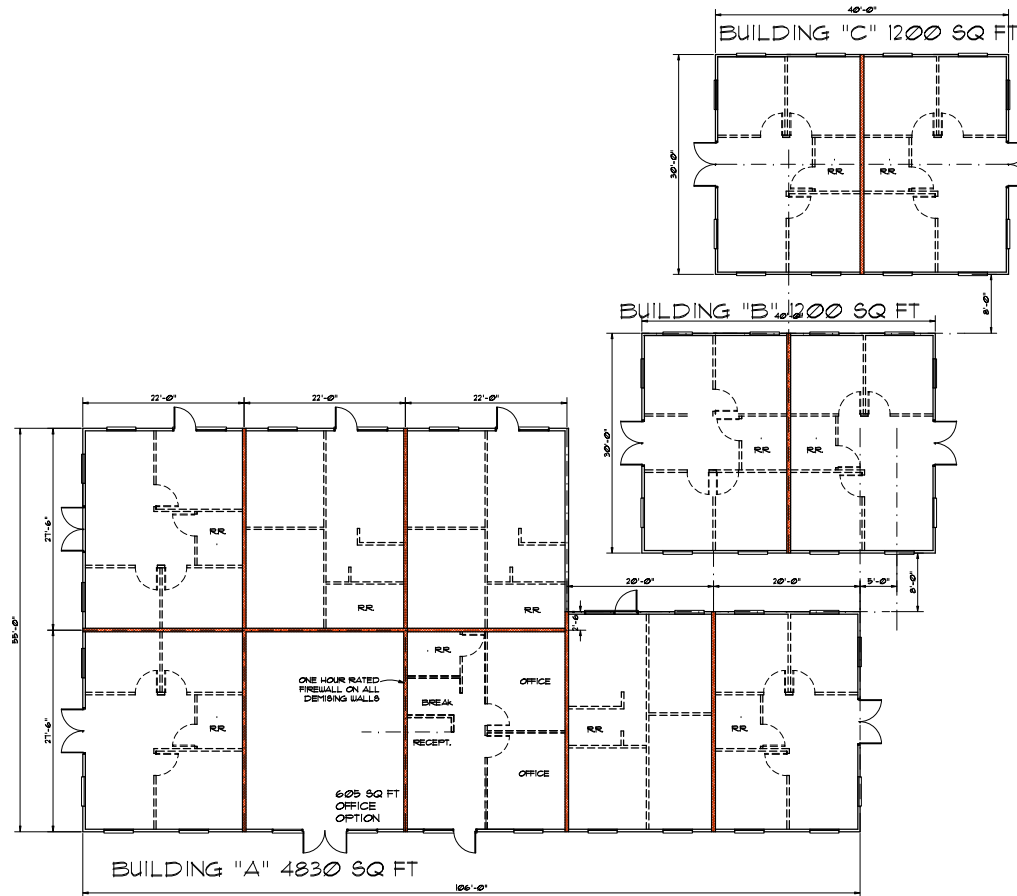
A-3



NORTH ELEVATION (SIDE VIEW FROM HOUSE)
SCALE 1/8" = 1'-0"



LANGLEY STREET ELEVATION (REAR VIEW)
SCALE 1/8" = 1'-0"



BUILDING "C" 1200 SQ FT

Rev No.	Date	Revision

A NEW OFFICE BUILDING FOR:
330 CULVER STREET
330 CULVER STREET
LAWRENCEVILLE, GEORGIA 30000

$$\triangle = 1$$



ARCADE, INC.
ARCHITECTS
BUILDING CONSULTANTS
3877 THAYER TRACE
DULUTH, GEORGIA 30096
TEL (404) 781-2322
ARCADEC@AOL.COM

Rev No. Date Revision

Rev No.	Date	Revision

SITE PLAN
NEW OFFICE BUILDING FOR:
330 CULVER STREET
330 CULVER STREET
LAURENCEVILLE, GEORGIA 30046

Project No: 25007
Scale: 1" = 40' - 0"
Drawn By: MF
Date: 6, 27, 2025
Issue: 9, 12, 2025

C-1c

TOTAL LOT "A" AREA 33918 SQ FT
10% OF TOTAL AREA (IMPERVIOUS) 23184 SQ FT
TOTAL PROPOSED BUILDINGS 1230 SQ FT
TOTAL PARKING AREA 9184 SQ FT
TOTAL SIDEWALKS/ SITTING 5600 SQ FT
TOTAL ABOVE (IMPERVIOUS) 22,014 SQ FT
PROPOSED IMPERVIOUS AREA IS LESS THAN REQUIRED.
(OK)

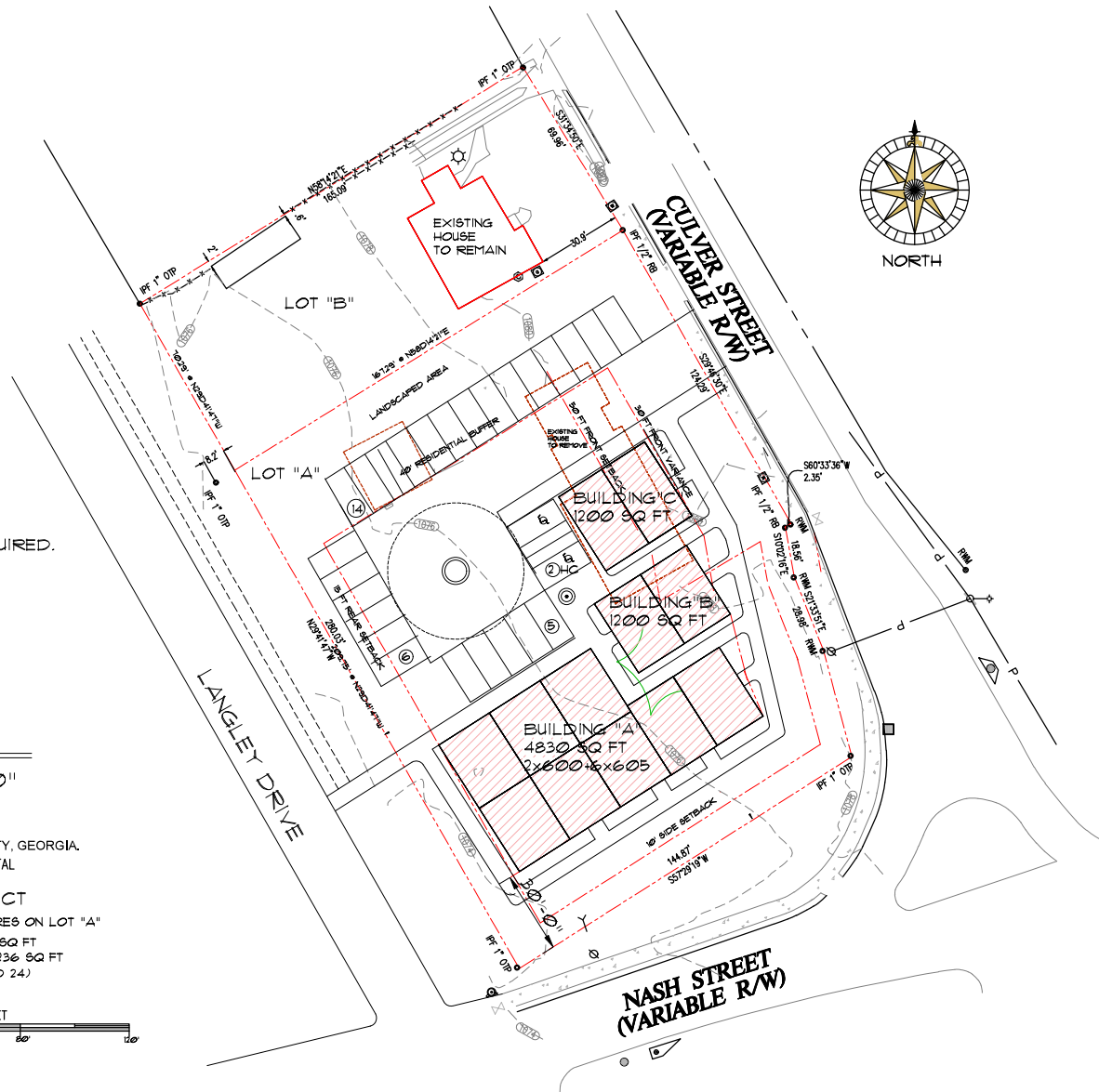
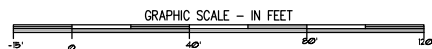
SITE PLAN

SCALE 1" = 40' - 0"

330 CULVER STREET
LAND LOT 142 - 5TH DISTRICT
CITY OF LAWRENCEVILLE, GWINNETT COUNTY, GEORGIA.
CLIENT: RAJESH KUMAR MITTAL

PROPOSED PROJECT

REMOVING EXISTING STRUCTURES ON LOT "A"
12 NEW UNITS OF APPROX 600 SQ FT
TOTAL NEW BUILDINGS AREA 1236 SQ FT
NEW PARKINGS 21- (REQUIRED 24)



RZC2025-00069
RECEIVED SEPTEMBER 16, 2025
PLANNING & DEVELOPMENT DEPARTMENT



RZC2025-00069

RECEIVED SEPTEMBER 16, 2025

PLANNING & DEVELOPMENT DEPARTMENT



RZC2025-00069
RECEIVED SEPTEMBER 16, 2025
PLANNING & DEVELOPMENT DEPARTMENT



RZC2025-00069
RECEIVED SEPTEMBER 16, 2025
PLANNING & DEVELOPMENT DEPARTMENT



RZC2025-00069
RECEIVED SEPTEMBER 16, 2025
PLANNING & DEVELOPMENT DEPARTMENT