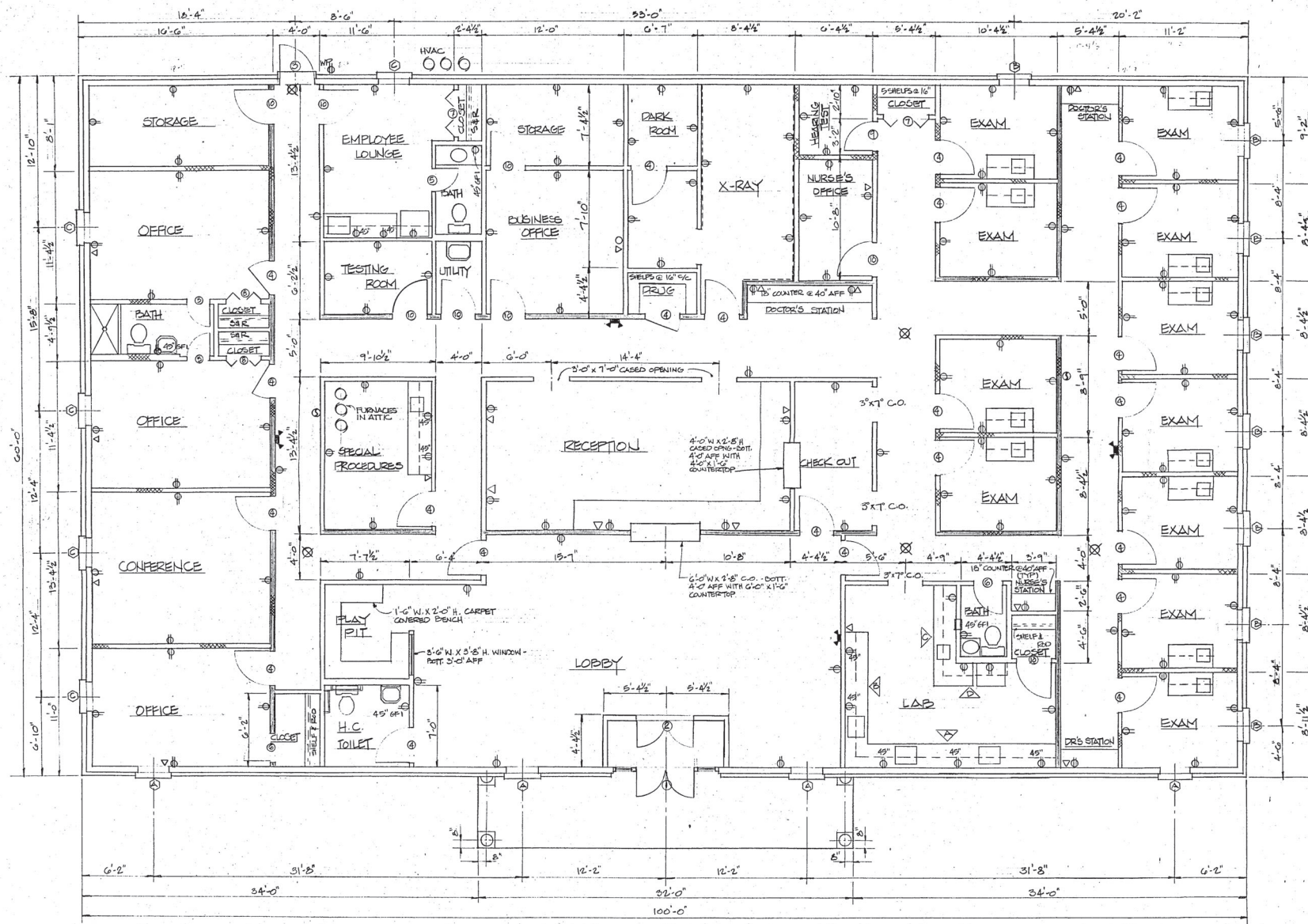


SUP2024-00091  
 RECEIVED: MAY 3, 2024  
 PLANNING AND DEVELOPMENT DEPARTMENT

OFFICE FOR <div></div>	FILE NUMBER 9011	DEVELOPER / BUILDER	DRAWING NUMBER
	CONTACT CONTACTED PREP-	MULTI - CONSTRUCTION SERVICES, INC.	A1
	DATE MARCH 7, 1990	2235 WALKER DRIVE	
	SCALE: 1/4" = 1'-0"	LAWRENCEVILLE, GEORGIA 30043	
		OFFICE: (404) 962-2800 DIGITAL PAGER: 383-9076	

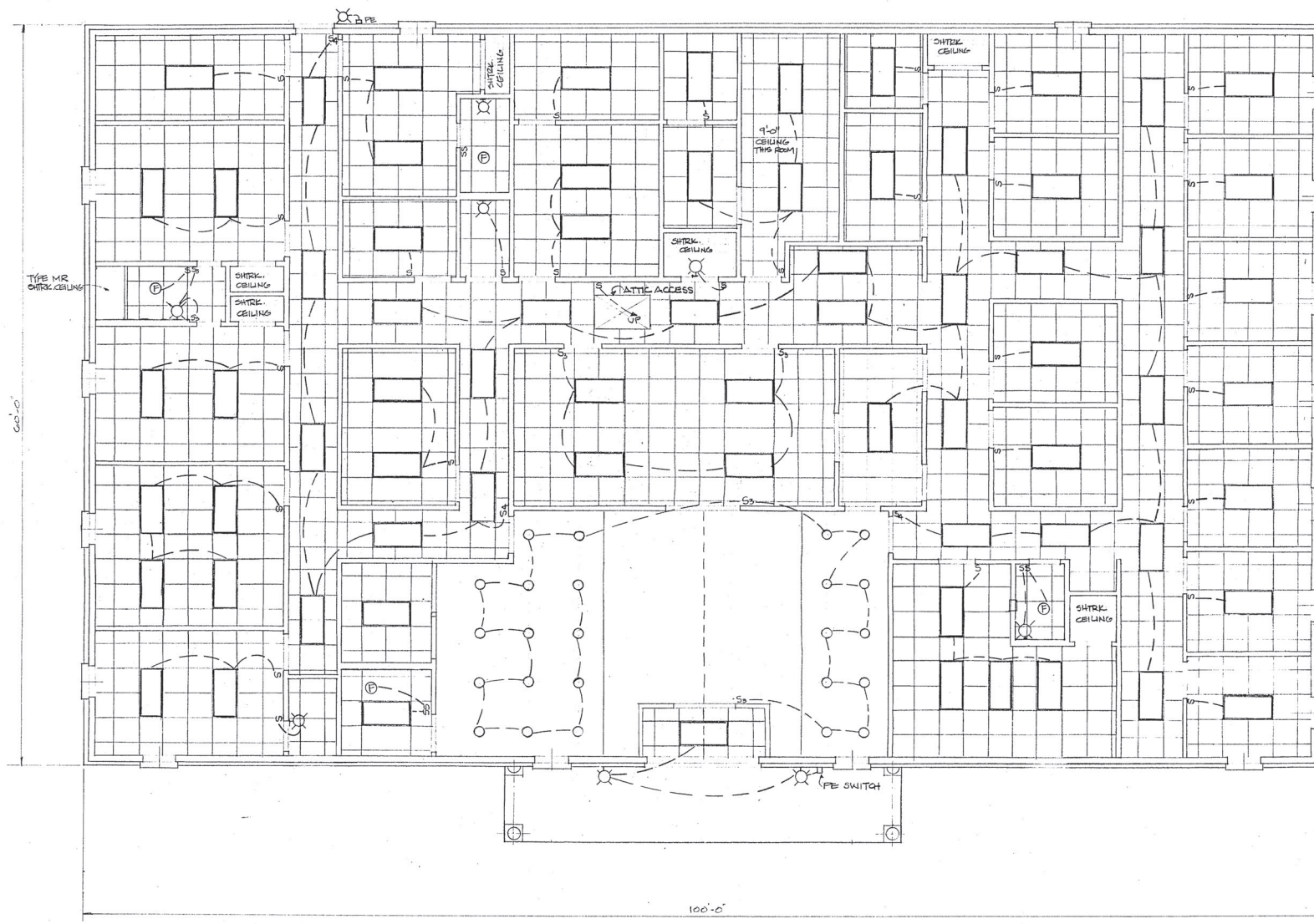


PARTITION AND ELECTRICAL PLAN  
SCALE: 1/8" = 1'-0"

SUP2024-00091  
RECEIVED: MAY 3, 2024  
PLANNING AND DEVELOPMENT DEPARTMENT

OFFICE FOR	FILE NUMBER 91011	DEVELOPER / BUILDER MULTI-CONSTRUCTION SERVICES, INC.	DRAWING NUMBER A2
	CONTACT JIM WALKER, PRES.	22305 WALKER DRIVE LAWRENCEVILLE, GEORGIA	SHEET 2 OF 10
	DATE MARCH 7, 1970	OFFICE (404) 962-2800 DIGITAL PAGER 383-7013	

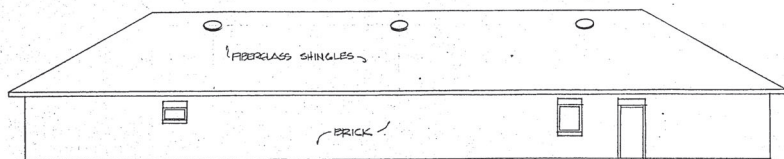




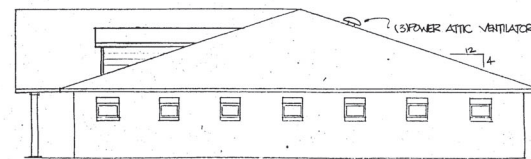
SUSPENDED CEILING AND LIGHTING PLAN  
SCALE: 1/4" = 1'-0"

SUP2024-00091  
RECEIVED: MAY 3, 2024  
PLANNING AND DEVELOPMENT DEPARTMENT

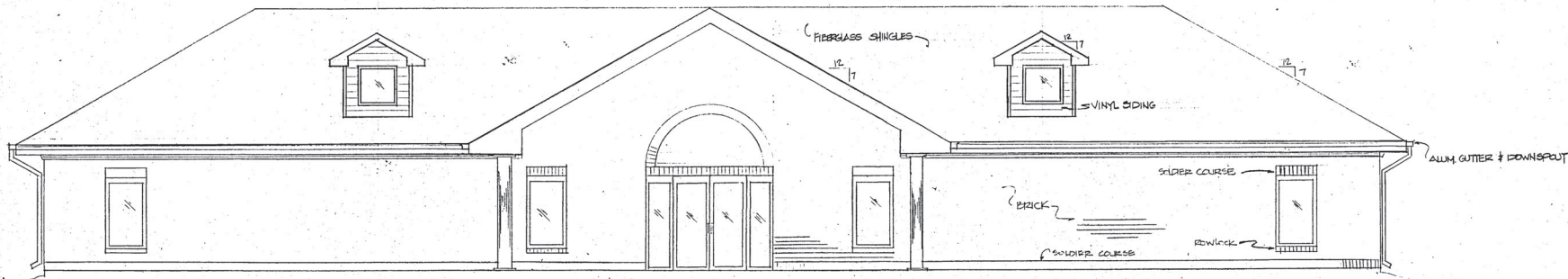
FILE NUMBER 2011 CONTACT JIM WALKER, P.E. DATE MAY 7, 1990 SCALE 1/4" = 1'-0"	DEVELOPER / BUILDER MULTI-CONSTRUCTION SERVICES, INC. 2238 WALKER DRIVE LAWRENCEVILLE, GEORGIA 30043 OFFICE: (404) 962-2800 DIGITAL PAGES: 333-9013	DRAWING NUMBER A3 SHEET 3 OF 10
--	---	---------------------------------------



REAR ELEVATION  
SCALE: 1/8" = 1'-0"



RIGHT SIDE ELEVATION  
SCALE: 1/8" = 1'-0"

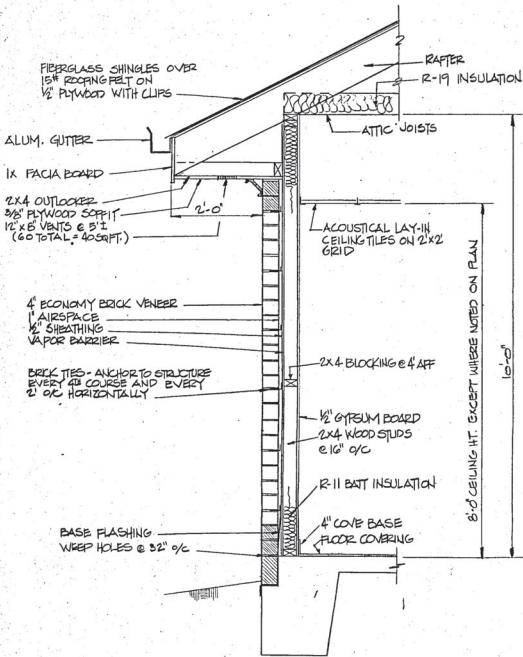


FRONT ELEVATION  
SCALE: 1/4" = 1'-0"

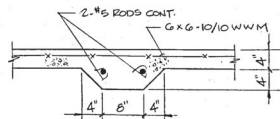
SUP2024-00091  
RECEIVED: MAY 3, 2024  
PLANNING AND DEVELOPMENT DEPARTMENT

OFFICE FOR	FILE NUMBER 1011	DEVELOPER / BUILDER MULTI-CONSTRUCTION SERVICES, INC. 2238 WALKER DRIVE LAWRENCEVILLE, GEORGIA 30243 OFFICE: (404) 716-2800 DIGITAL PAPER: 383-9018	DRAWING NUMBER A4	SHEET 4 OF 10

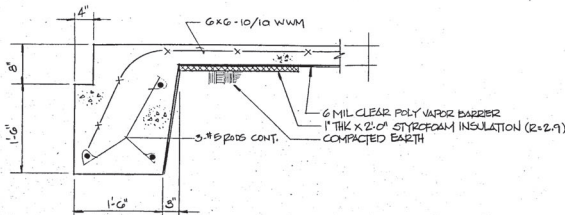




TYPICAL WALL SECTION  
SCALE: 3/4"=1'-0"



SECTION A-A  
SCALE: 1"=1'-0"



SECTION B-B  
SCALE: 1"=1'-0"

DOOR SCHEDULE						
MARK	SIZE	TYPE	FRAME	HEADER & LINTEL	THRESHOLD	REMARKS
1	2'0" x 8'1 1/2"	DEPENDENT	ALUM.	1 1/2" x 3 1/2" x 2 1/2" BOLT TO DBL. 2X4 W/ 1/2" PLYWOOD SPACER	ALUM.	W/SHOULDER OVERALL WID. 8'0"
2	2'0" x 8'1 1/2"	"	"	"	NONE	"
3	2'0" x 8'1 1/2"	RUSH METAL	METAL	1 1/2" x 3 1/2" x 2 1/2" BOLT TO DBL. 2X4 W/ 1/2" PLYWOOD SPACER	ALUM.	"
4	2'0" x 8'1 1/2"	S.C. WOOD	WOOD	1 1/2" x 3 1/2" x 2 1/2" BOLT TO DBL. 2X4 W/ 1/2" PLYWOOD SPACER	NONE	PREFIN. W/TRIM
5	2'0" x 8'1 1/2"	"	H.C. WOOD	"	"	"
6	2'0" x 8'1 1/2"	"	"	"	"	"
7	4'0" x 8'1 1/2"	4 PNL. BRD.	"	"	"	"
8	3'0" x 8'1 1/2"	"	"	"	"	"
9	2'0" x 8'1 1/2"	S.C. WOOD	"	"	"	PREFIN. W/TRIM
10	2'0" x 8'1 1/2"	H.C. WOOD	"	"	"	"

WINDOW SCHEDULE					
MARK	SIZE	TYPE	FRAME	HEADER & LINTEL	REMARKS
A	2'-0" x 5'-0" H	FIXED GLASS	ALUM.	1 1/2" x 3 1/2" x 2 1/2" BOLT TO DBL. 2X4 W/ 1/2" PLYWOOD SPACER	20. PER MANUF.
B	2'-0" x 1'-4" H	"	"	"	"
C	2'-0" x 3'-4" H	"	"	"	"
	2'-0" x 2'-8" H	"	"	DBL. 2X4 W/ 1/2" PLYWOOD SPACER	DEPT. M.B.R.

# DESIGN LOADS

ROOF LOAD : 20 PSF W.L.  
20 PSF W.L.  
10 PSF D.L.  
ATTC LOAD : 20 PSF L.L.  
10 PSF D.L.

# UNIT STRESSES

DESIGN SOIL BEARING PRESSURE -2500 PSF.  
CONCRETE ULTIMATE COMPRESSIVE STRENGTH @ 28 DAYS -3000 PSI  
REINFORCING BARS - ASTM A618 GRADE 60  
WOOD - SOUTHERN PINE #2 MIN F<sub>b</sub> = 1200 PSI

# NOTES:

- OCCUPANCY CLASSIFICATION: BUSINESS, ONE TENANT  
TYPE OF CONSTRUCTION: CLASS G, NON PROTECTED, NON SPRINKLERED.  
GROSS AREA = 6000 SQ. FT.
- EXIT DOORS SHALL NOT BE SUBJECT TO THE USE OF A KEY FOR OPERATION FROM INSIDE THE BUILDING.
- ALL DOORS SHALL BE EQUIPPED WITH HANDICAP (LEVERED) HARDWARE.
- CONCRETE TEST REPORTS SHALL BE AVAILABLE AT LOC SITE.
- PROVIDE ONE CLASS A, B, C OR 10 LB FIRE EXTINGUISHER.
- H.C. TOILET TO BE EQUIPPED WITH HANDICAPPED ACCESSIBLE LAVATORY AND WATER CLOSET. SAFETY GRAB BARS TO BE INSTALLED BEHIND AND ON WALL ADJACENT TO W.C. SS. 36" AFF AND SHALL SUPPORT A 250# LOAD.
- CEILINGS TO BE SUSPENDED 2' x 2' GRID WITH REGULAR EDGED (OR EQUALER APPROVED) TILES (EXCEPT IN AREAS SHOWN ON PLANS).
- INTERIOR LOAD BEARING PARTITIONS TO BE WOOD 2X4'S @ 16" O.C. W/ 1/2" GYPSUM BOARD BOTH SIDES AND 2X4 BLOCKING AT 4' AFF. NON-LOAD BEARING PARTITIONS MAY BE EITHER WOOD OR METAL STUD FRAMING.
- INTERIOR PAINT, WALLCOVERINGS, CARPET, FLOOR TILE, ETC. TO BE SPECIFIED BY OWNER.

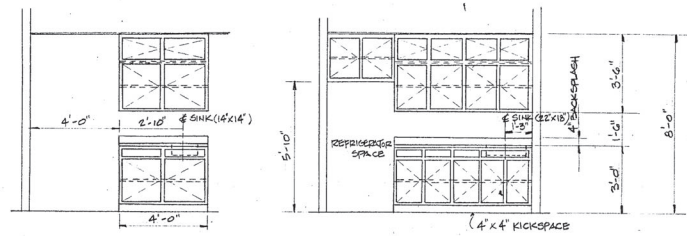
# LEGEND

- 2' x 4' 4-TUBE FLOURESCENT LIGHT FIXTURE (CEILING RECESSED)
- CEILING MOUNTED 25 W. EXT LIGHT WITH BATTERY BACKUP
- DUPLEX RECEPTACLE, 12' AFF UNLESS NOTED
- DUPLEX RECEPTACLE, GND. FAULT INTERRUPTABLE
- DUPLEX RECEPTACLE, WEATHERPROOF
- TELEPHONE RECEPTACLE, 12' AFF
- EMERGENCY LIGHTING, 2 BULB, BATTERY OPERATED AUTOMATIC CUT OFF WHEN POWER FAILS. SEPARATE INTEGRATED CIRCUIT W/ LOCK ON BAR.
- SMOKE DETECTOR
- TRIJET EXHAUST FAN
- PARTITION W/ LEAD LINED SHEETROCK
- PARTITION W/ ACOUSTICAL INSULATION (SONO-BATTS)
- LOAD BEARING PARTITION
- WALL MOUNTED INCANDESCENT LIGHT FIXTURE
- RECESSED INCANDESCENT TSW. SPOT

SUP2024-00091

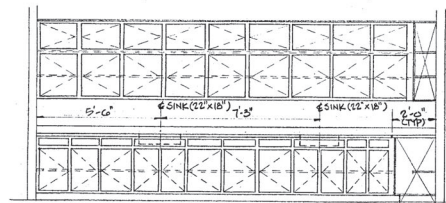
RECEIVED: MAY 3, 2024

PLANNING AND DEVELOPMENT DEPARTMENT

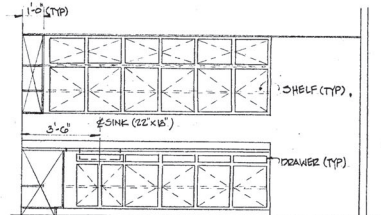


EXAM ROOM  
GLASS SHOWN  
ON OFF. HAND

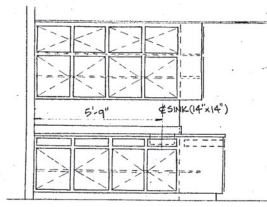
EMPLOYEE LOUNGE



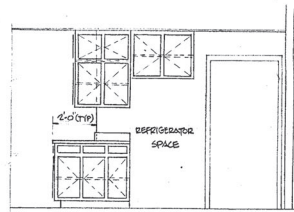
ELEVATION 'A'



ELEVATION 'B'

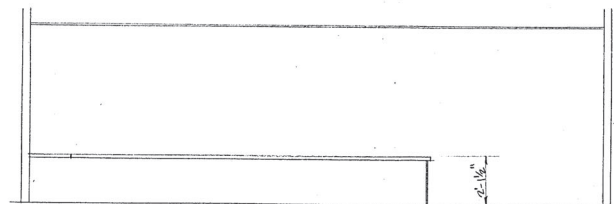
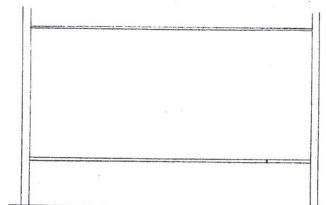


ELEVATION 'C'



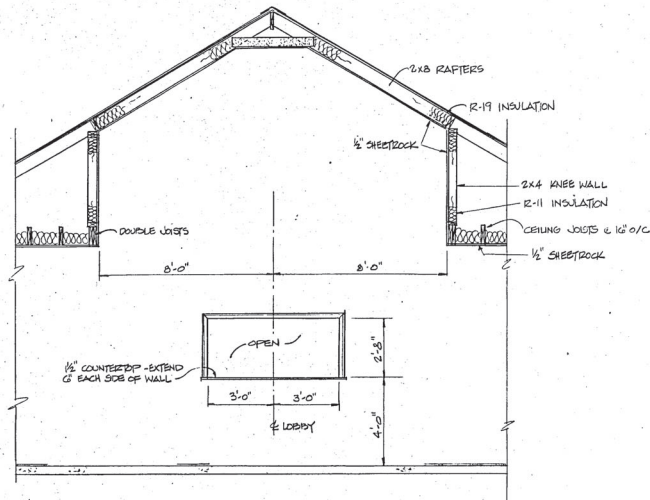
ELEVATION 'D'

LAB ELEVATIONS

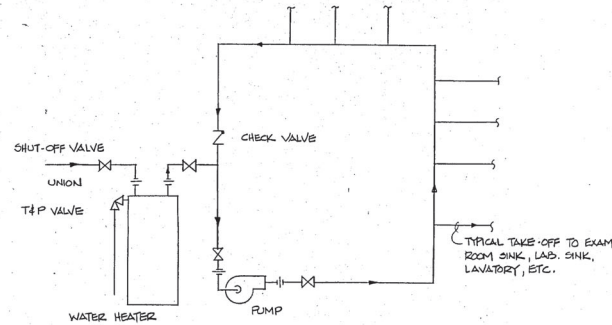


SUP2024-00091  
RECEIVED: MAY 3, 2024  
PLANNING AND DEVELOPMENT DEPARTMENT

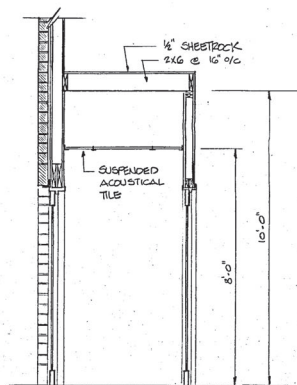
	FILE NUMBER 9011	DEVELOPER / BUILDER	DRAWING NUMBER
	CONTACT JIM WALKER FSSA	MULTI-CONSTRUCTION SERVICES, INC.	A6
	DATE MARCH 7, 1990	2225 WALKER DRIVE LAWRENCEVILLE, GEORGIA 30043	
	SCALE 3/8" = 1'-0"	OFFICE: (404) 762-2300 DIGITAL PAPER: 2003-90T8	
			SHEET 6 OF 10



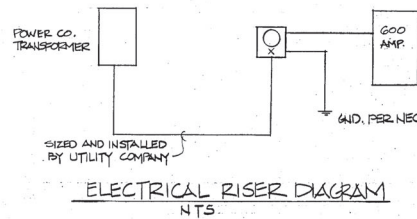
SECTION THRU LOBBY  
SCALE: 3/8" = 1'-0"



HOT WATER RECIRCULATING SCHEMATIC  
NO SCALE



SECTION THRU ENTRANCE  
SCALE: 1/2" = 1'-0"



ELECTRICAL RISER DIAGRAM  
NTS

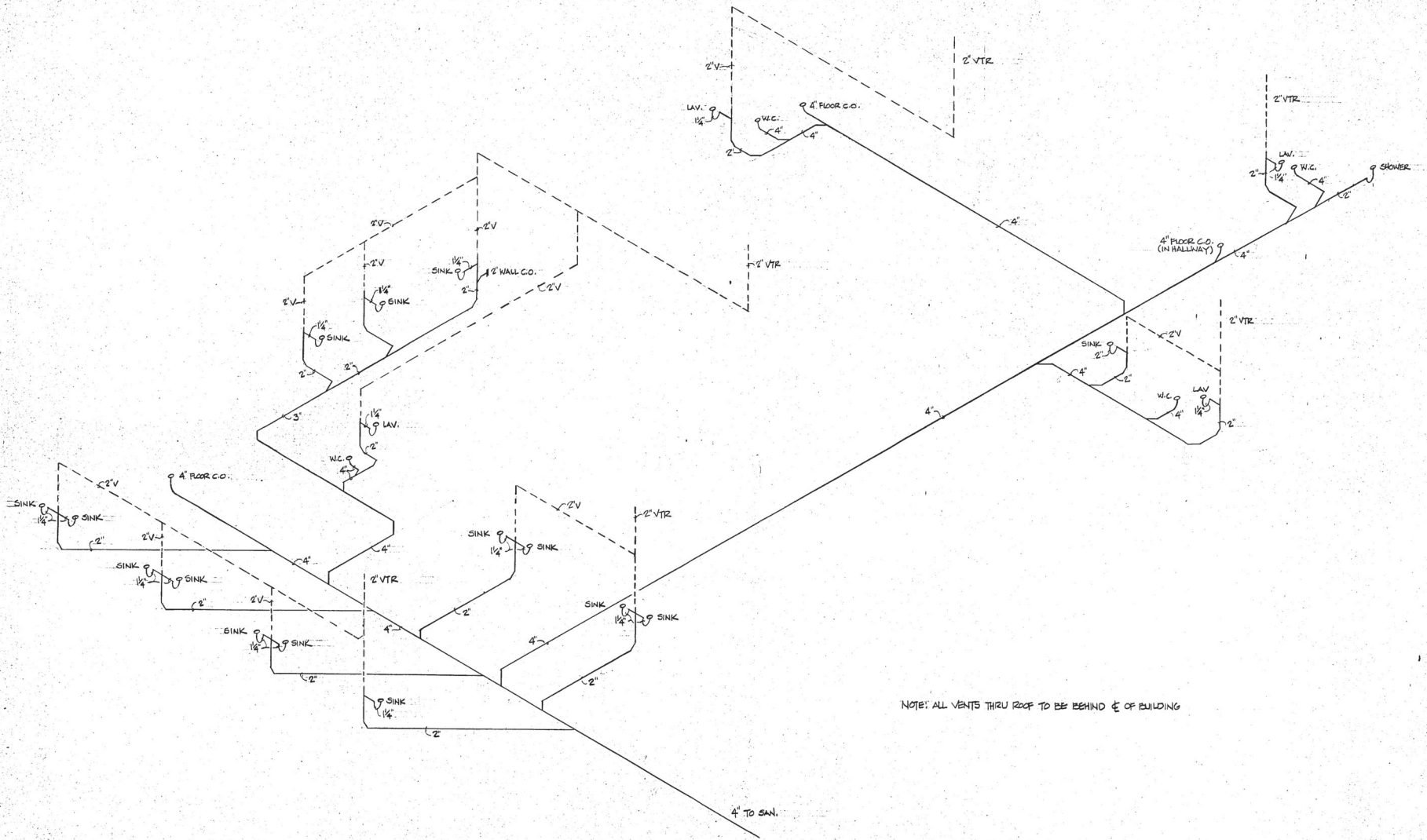
SUP2024-00091  
RECEIVED: MAY 3, 2024  
PLANNING AND DEVELOPMENT DEPARTMENT

OFFICE FOR	FILE NUMBER 9011	DEVELOPER / BUILDER MULTI-CONSTRUCTION SERVICES, INC.	DRAWING NUMBER A7
	CONTRACT JIM WALKER, PRES. DATE JULY 18, 1990 SCALE AS NOTED	2238 WALKER DRIVE LAWRENCEVILLE, GEORGIA 30243 OFFICE: (404) 962-2800 DIGITAL PAGER: 333-9075	SHEET 7 OF 10







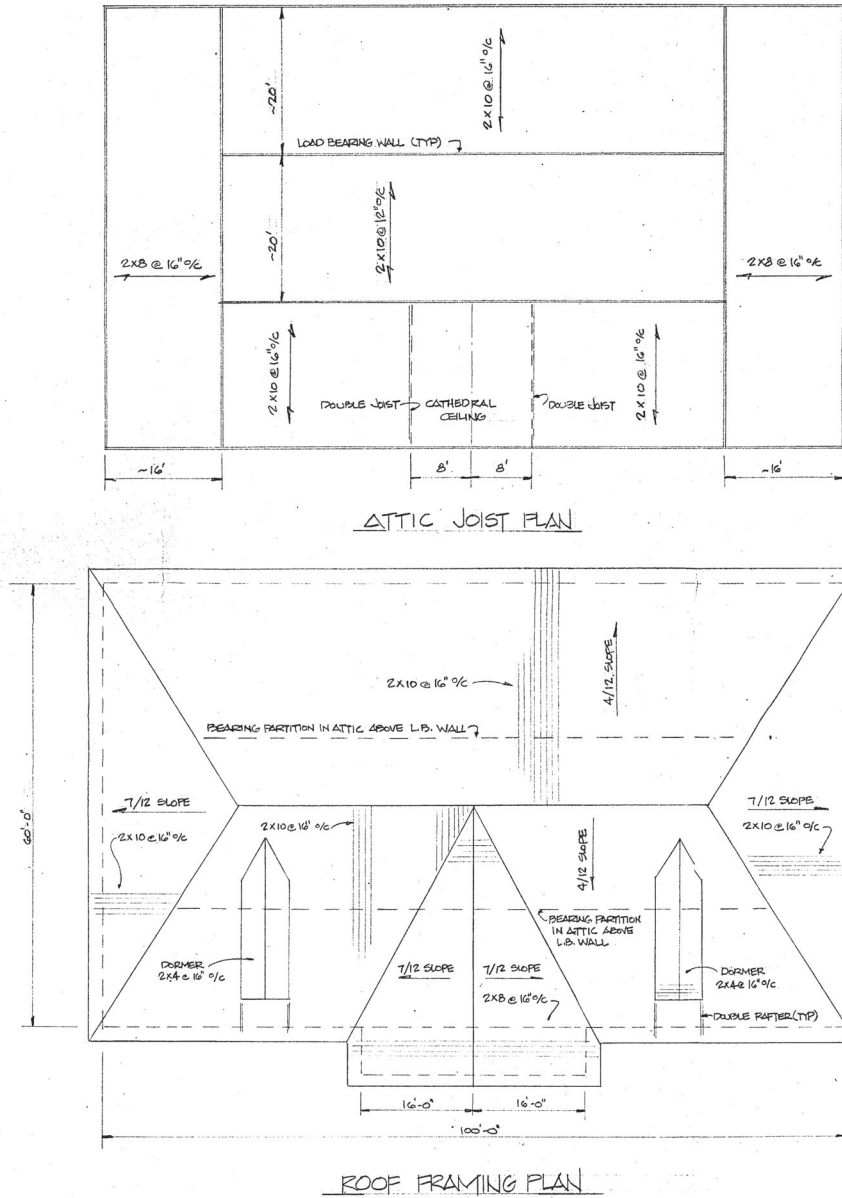


OFFICE FOR	FILE NUMBER	DEVELOPER/BUILDER	DRAWING NUMBER
	2024-00091	MULTI-CONSTRUCTION SERVICES, INC.	A9
	CONTRACT	2233 WALKER DRIVE	SHEET 9 OF 10
	DATE	LAWRENCEVILLE, GEORGIA 30043	
	SCALE	OFFICE: (604) 912-2800	
	SCALE	DENTAL PLASTER: 5:5:10:15	

SUP2024-00091

RECEIVED: MAY 3, 2024

PLANNING AND DEVELOPMENT DEPARTMENT



SUP2024-00091  
 RECEIVED: MAY 3, 2024  
 PLANNING AND DEVELOPMENT DEPARTMENT

OFFICE FOR	FILE NUMBER 1011	DEVELOPER / BUILDER MULTI-CONSTRUCTION SERVICES, INC.	DRAWING NUMBER A10
	CONTRACT JIM WALKER, PRES. MARCH 7, 1990 SCALE 1/8" = 1'-0"	2238 WALKER DRIVE LAWRENCEVILLE, GEORGIA 30243 OFFICE: (404) 962-2800 DIGITAL PAGER: 385-9075	SHEET 10 OF 10