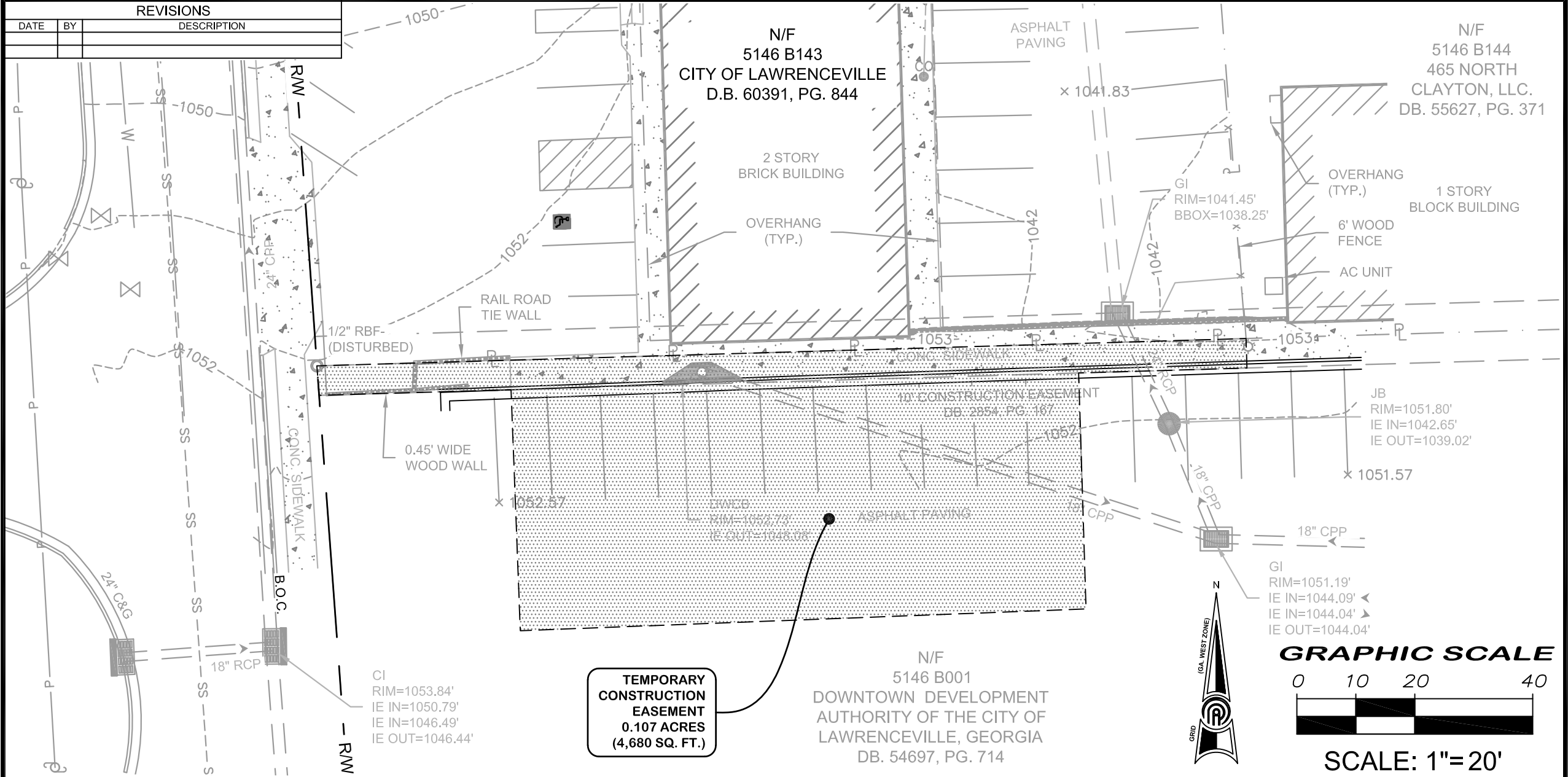


**REVISIONS**

DATE	BY	DESCRIPTION

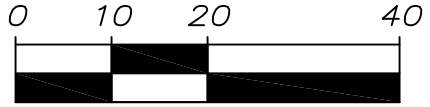


**TEMPORARY  
CONSTRUCTION  
EASEMENT  
0.107 ACRES  
(4,680 SQ. FT.)**

N/F  
5146 B001  
DOWNTOWN DEVELOPMENT  
AUTHORITY OF THE CITY OF  
LAWRENCEVILLE, GEORGIA  
DB. 54697, PG. 714



**GRAPHIC SCALE**



**SCALE: 1"=20'**

Parcel: 5146B 143	Owner: CITY OF LAWRENCEVILLE
Date: 10/24/2024	
Land Lot: 146	
District: 5	County: GWINNETT
Job #: 23-177A	Scale: 1" = 20'
Field By: BBR	Drawn By: BBR
	Checked By: JP

**PRECISION**  
Planning Inc.

planners • engineers • architects • surveyors

Georgia Land Surveying Firm COA # LSF000313  
400 Pike Boulevard, Lawrenceville, Ga 30046  
770.338.8000 • www.ppi.us • info@ppi.us

**TEMPORARY CONSTRUCTION EASEMENT EXHIBIT FOR:  
CITY OF LAWRENCEVILLE**

DRAWING  
NUMBER  
1 OF 1

E:\Projects\2023\23177A-LD-City of Lawrenceville Depot Street Parking\DWG\23177A\_Demo Plan.dwg C1.0 DEMOLITION PLAN (2)