



FUQUA & PARTNERS ARCHITECTS
 MEMBER OF THE AMERICAN INSTITUTE OF ARCHITECTS

Architecture
 Interior Design
 Media Planning
 Master Planning

100 Church Street, Suite 700
 Huntsville, Alabama 35801
 (256) 534-3535
 www.fuquarchitects.com

Martinson Tract Apartments
 Huntsville, AL

EXTERIOR ELEVATIONS - APARTMENT LONG ELEVATIONS

PROJECT NO: FPA 871523
 DRAWN: Author
 CHECKED: Checker
 ISSUE: 8/15 Design
 DATE: 8/25/2023

REVISIONS

RECEIVED: JUNE 24, 2024
 PLANNING AND DEVELOPMENT DEPARTMENT

RZM2024-00016

PRELIMINARY Construction
 Not For

SHEET
APT A2.1
 OF

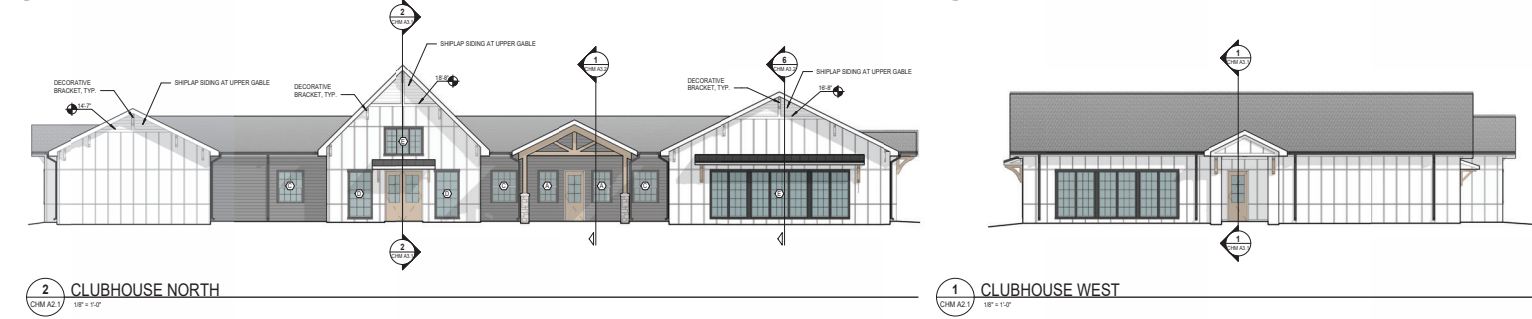
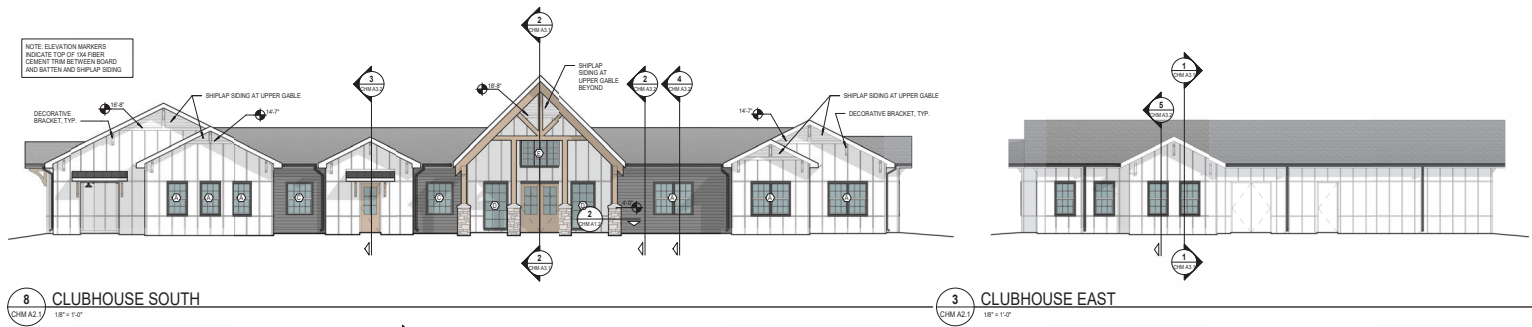
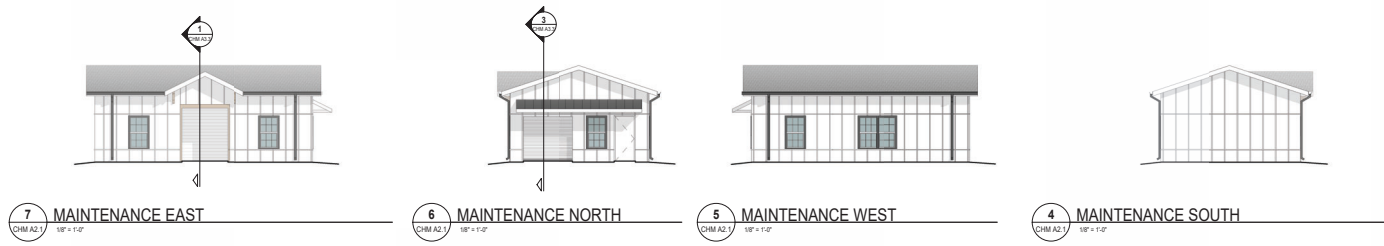
8/25/2023 1:40:30 PM

1 2 3 4 5 6

A
B
C
D
E

GENERAL NOTE:
AT THESE CORNERS, LOCATE DOWNPOUNTS
TIGHT TO BUILDING CORNER AT FIELD
LOCATIONS, CENTER DOWNPOUNTS BETWEEN
WINDOWS.

EXTERIOR MATERIAL LEGEND	
	FIBER CEMENT BOARD AND BATTEN SIDING EQUAL TO JAMES HARDIE PAINT COLOR TO BE SELECTED BY ARCHITECT. FOR HORIZONTAL BATTEN HEIGHTS, SEE 2 / APT.A2.2
	FIBER CEMENT LAP SIDING EQUAL TO JAMES HARDIE SMOOTH TEXTURE WITH F EXPOSURE PAINT COLOR TO BE SELECTED BY ARCHITECT.
	FIBER CEMENT PANEL EQUAL TO JAMES HARDIE SMOOTH TEXTURE PAINT COLOR TO BE SELECTED BY ARCHITECT.
	STAINED WOOD FRAMING / TRIM COMPONENTS
	EXHAUST VENT CAPS - SEE MECHANICAL FOR SIZES. PAINT TO MATCH ADJACENT SIDING. PROVIDE SINGLE 1X FIBER CEMENT TRIM BACKER BLOCK CENTERED ON VENT CAP. SEE ADJACENT DIMGRAM
	1X TRIM BLOCK
	VENT CAP



**FUQUA
& PARTNERS
ARCHITECTS**
MEMBER OF THE AMERICAN
INSTITUTE OF ARCHITECTS

Architecture
Interior Design
Media Visualization
Master Planning

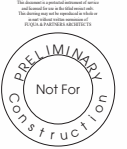
100 Church Street, Suite 700
Huntsville, Alabama 35801
(256) 534-3516
www.fuquarchitects.com

Martinson Tract Apartments
Huntsville, AL
EXTERIOR ELEVATIONS - CLUBHOUSE

PROJECT NO:	EPK 401523
DRAWN:	Author
CHECKED:	Checker
ISSUE:	80% Design
DATE:	8/25/2024

REVISIONS

RZM2024-00016
RECEIVED: JUNE 24, 2024
PLANNING AND DEVELOPMENT DEPARTMENT



SHEET
**CHM
A2.1**
OF

8/25/2024 1:54:38 PM