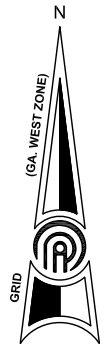
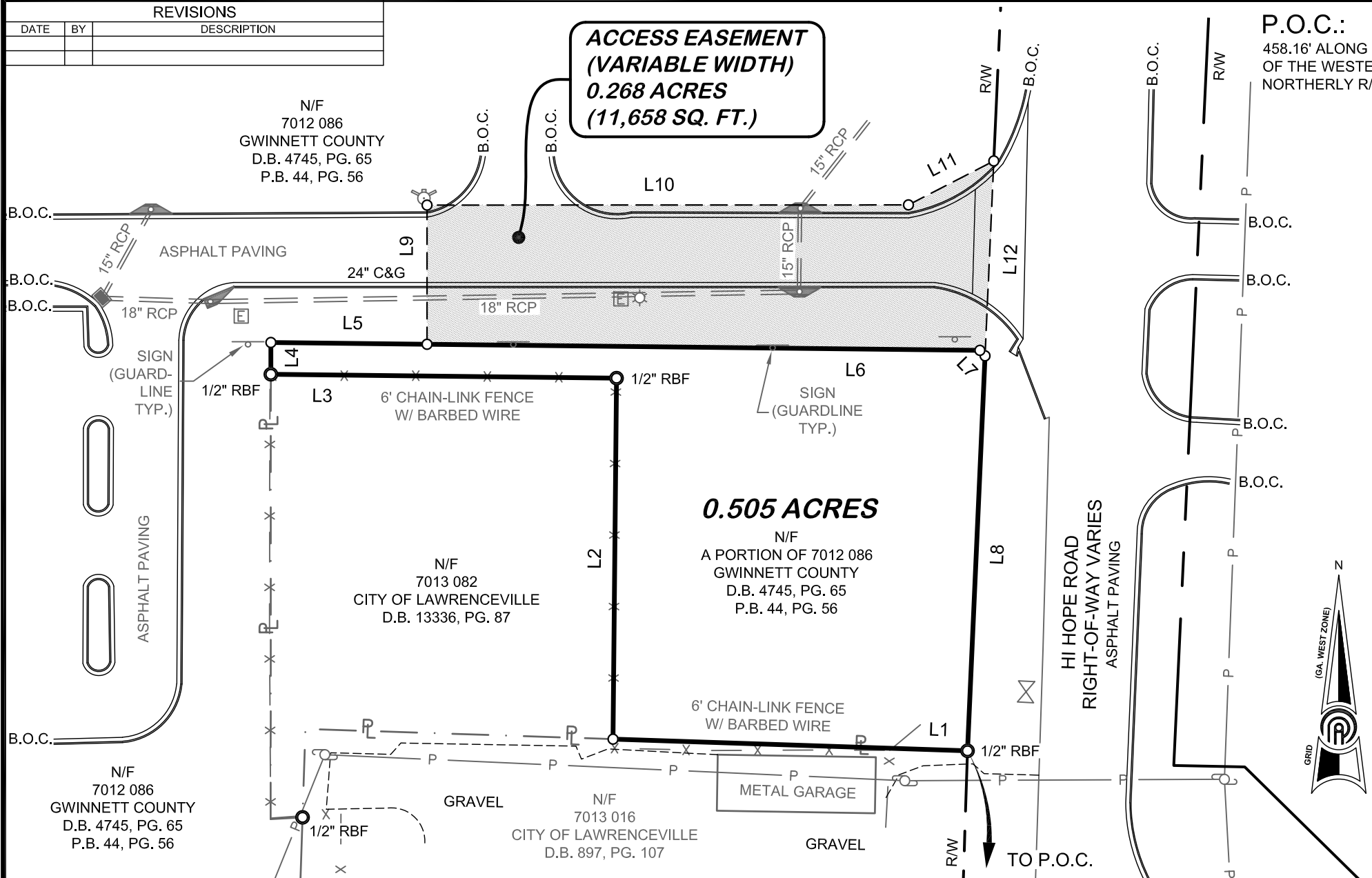


REVISIONS		
DATE	BY	DESCRIPTION

**ACCESS EASEMENT
(VARIABLE WIDTH)
0.268 ACRES
(11,658 SQ. FT.)**

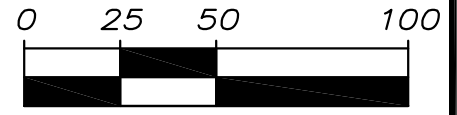
P.O.C.:
458.16' ALONG THE R/W OF HI HOPE ROAD TO THE INTERSECTION OF THE WESTERLY R/W OF HI HOPE ROAD (R/W VARIES) AND THE NORTHERLY R/W OF UNIVERSITY PARKWAY (R/W VARIES).

LINE TABLE		
LINE	LENGTH	BEARING
L1	133.89'	N88°06'42"W
L2	136.32'	N00°34'24"E
L3	130.53'	N89°21'40"W
L4	12.00'	N00°01'06"E
L5	58.99'	S89°21'40"E
L6	208.69'	S89°21'40"E
L7	2.84'	S43°43'59"E
L8	149.29'	S02°33'07"W
L9	52.54'	N00°01'05"W
L10	181.72'	N89°58'55"E
L11	36.24'	N62°44'11"E
L12	73.65'	S02°33'07"W



 ACCESS EASEMENT (AE)

GRAPHIC SCALE



SCALE: 1" = 50'

E:\Projects\2022\22080-SV-City of Lawrenceville\DWG\Survey\Hi Hope Rd\22080-Access & Property Exhibit.dwg 1

Parcel: 7012 086	Owner: GWINNETT COUNTY
Date: 12/7/2022	
Land Lot: 13	
District: 7th	County: GWINNETT, GA
Job #: S22080	Scale: 1" = 50'
Field By: APJ	Drawn By: CCP
	Checked By: DEJ

PRECISION
Planning Inc.

planners • engineers • architects • surveyors

Georgia Land Surveying Firm COA # LSF000313
400 Pike Boulevard, Lawrenceville, Ga 30046
770.338.8000 • www.ppi.us • info@ppi.us

ACCESS & PROPERTY EXHIBIT:
CITY OF LAWRENCEVILLE

DRAWING NUMBER
1 OF 1