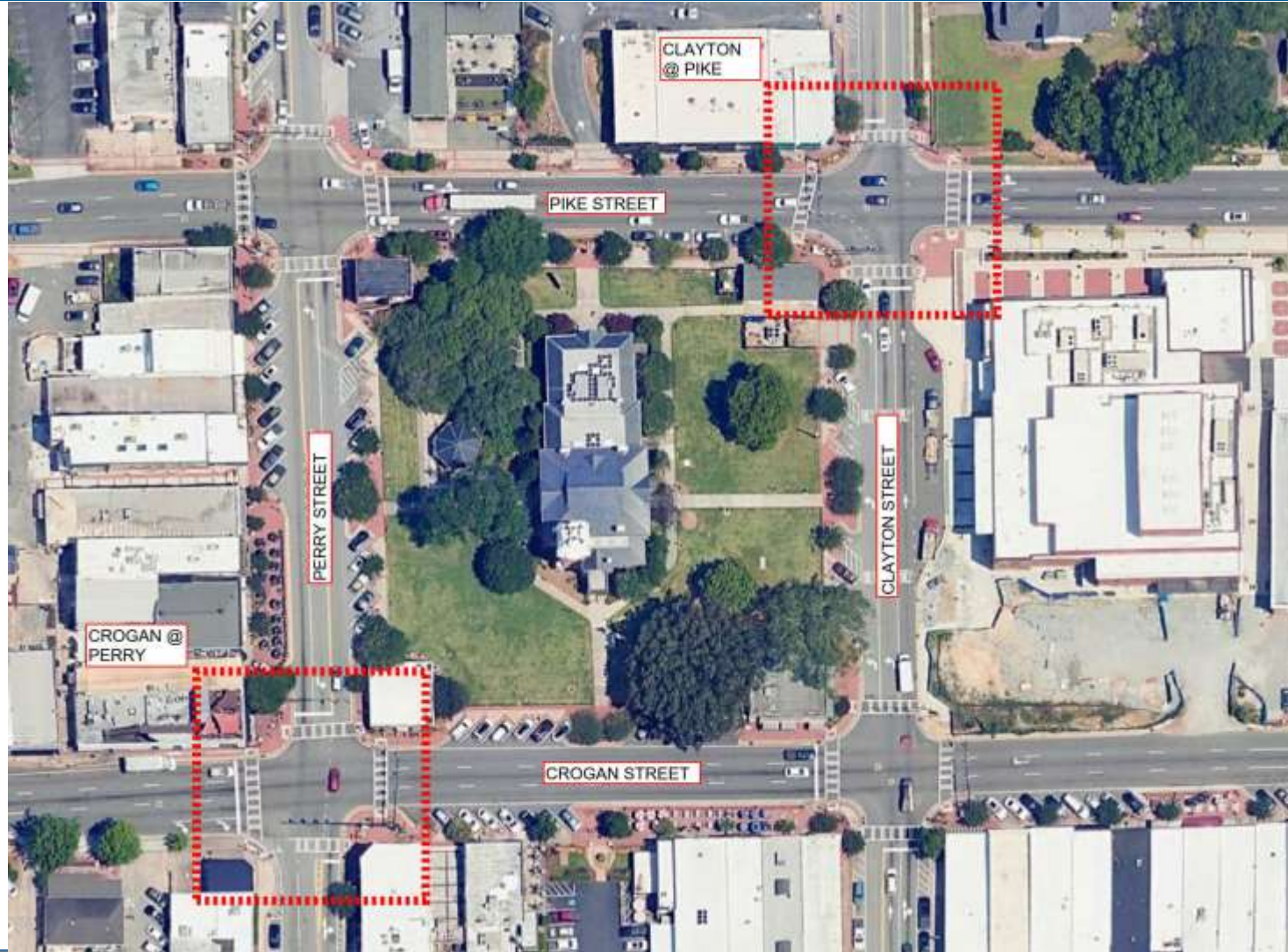




LAWRENCEVILLE RAISED INTERSECTIONS – PAVER REFERENCE PROJECTS

Presented to: City of Lawrenceville by Columbia Engineering – July, 2024

PROJECT AREA



PROVIDING INNOVATIVE SOLUTIONS TO COMPLEX PROBLEMS

REFERENCE PROJECT 1 – CONCRETE PAVERS

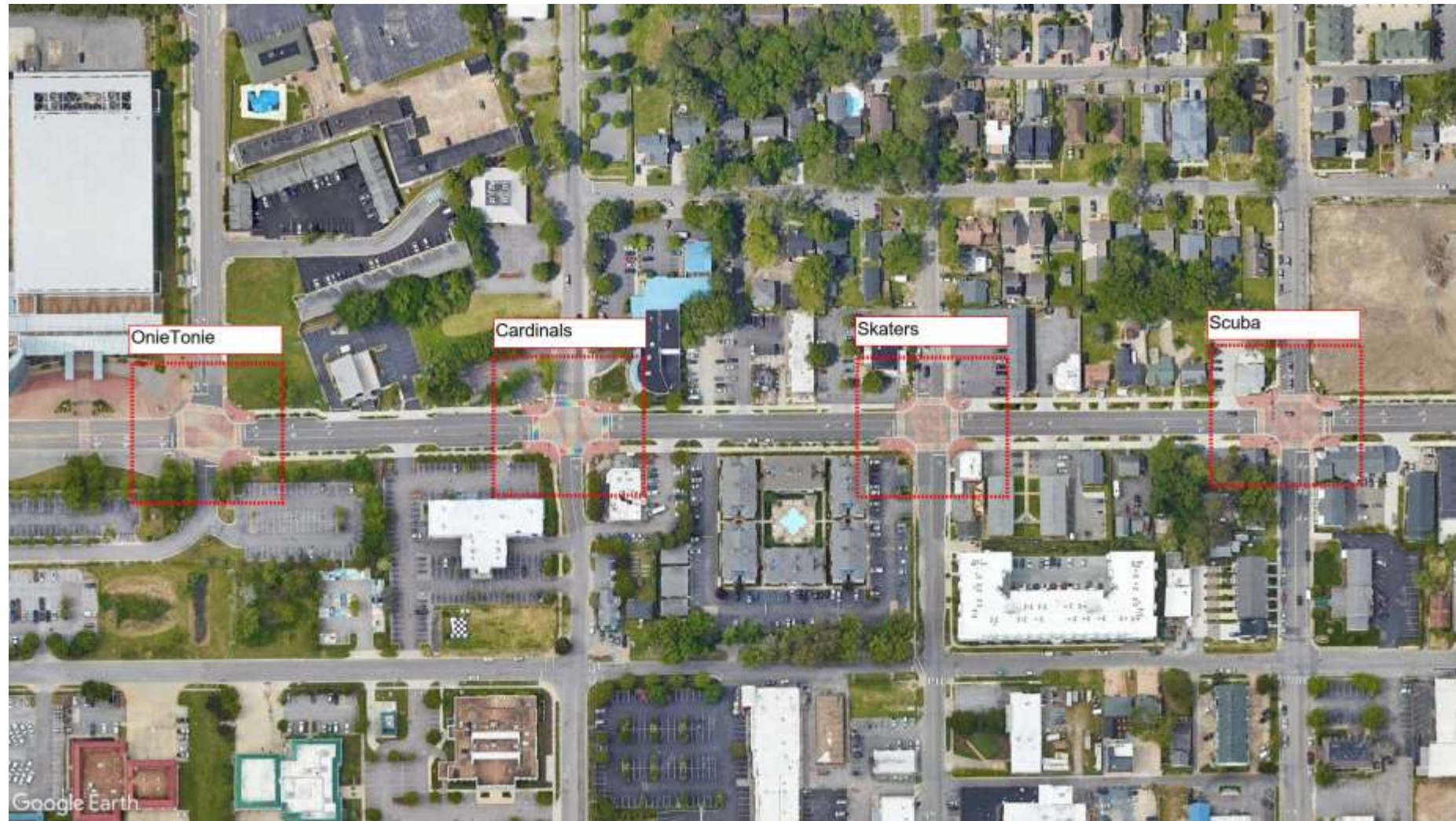
Vibe Creative District Intersections: Virginia Beach, VA

Project: Use custom paving patterns developed by local artists to enhance intersections and build the sense of identity in this creative arts district.

Materials: Concrete pavers (unknown product specification)

Completion: 2020

Vibe Intersections- 19th Street Virginia Beach, VA



PROVIDING INNOVATIVE SOLUTIONS TO COMPLEX PROBLEMS

ONIETONIE



PROVIDING INNOVATIVE SOLUTIONS TO COMPLEX PROBLEMS

CARDINALS



PROVIDING INNOVATIVE SOLUTIONS TO COMPLEX PROBLEMS

SKATERS



PROVIDING INNOVATIVE SOLUTIONS TO COMPLEX PROBLEMS

SCUBA



PROVIDING INNOVATIVE SOLUTIONS TO COMPLEX PROBLEMS

REFERENCE PROJECT 2 - BRICK

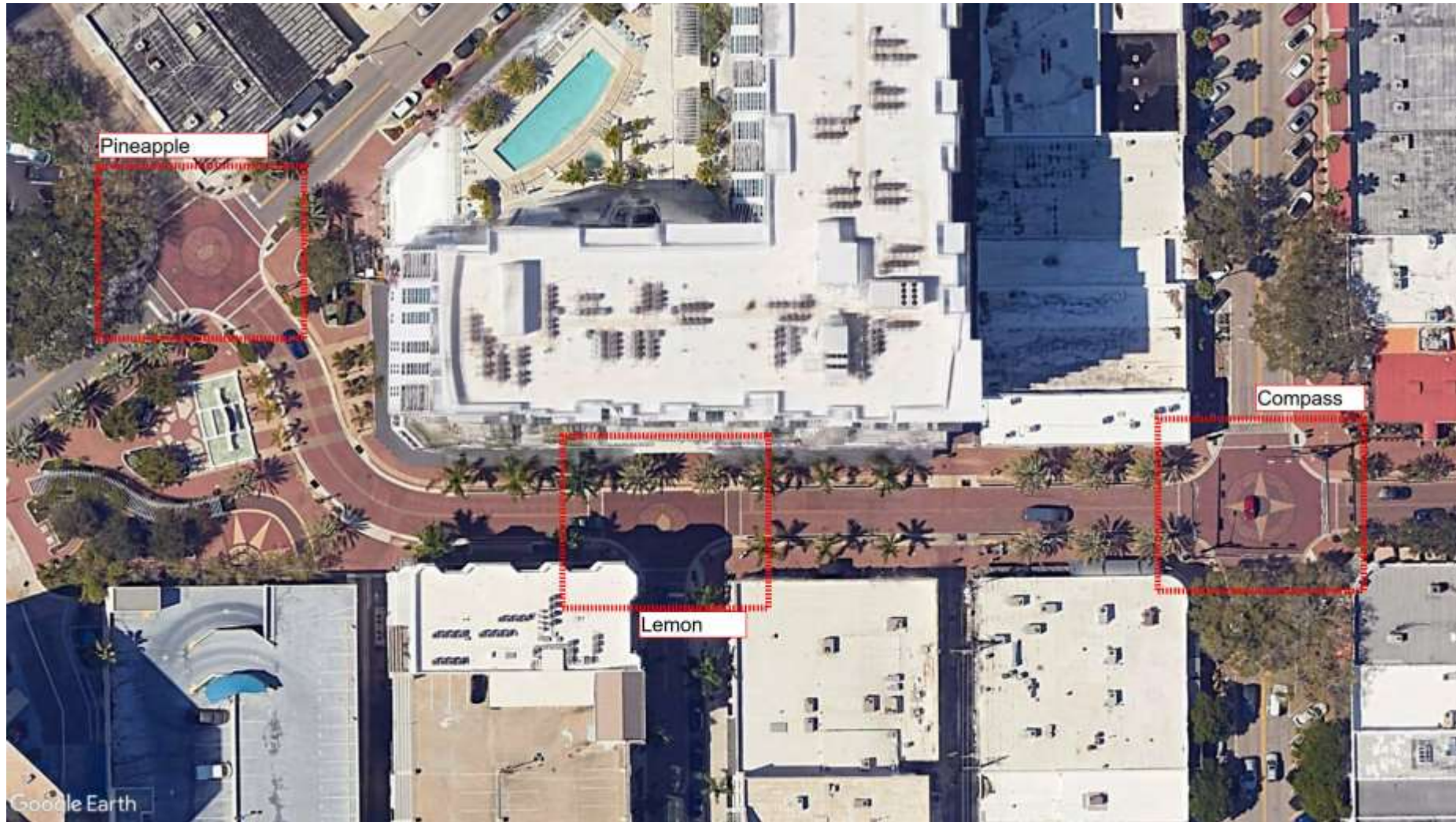
Lemon Avenue Streetscape Project, Sarasota, FL

Project: Provide a more pedestrian friendly downtown experience through enhanced sidewalks, landscape, and vehicular improvements with a cohesive theme to reinforce the sense of place.

Materials: Clay brick pavers (Pine Hall Brick Company: Full Range, Rose, Buff, Dark Accent)

Completion: 2019

Lemon Avenue Streetscape- Sarasota, FL



PROVIDING INNOVATIVE SOLUTIONS TO COMPLEX PROBLEMS

PINEAPPLE



PROVIDING INNOVATIVE SOLUTIONS TO COMPLEX PROBLEMS

LEMON



PROVIDING INNOVATIVE SOLUTIONS TO COMPLEX PROBLEMS

COMPASS



PROVIDING INNOVATIVE SOLUTIONS TO COMPLEX PROBLEMS

REFERENCE PROJECT 3 - BRICK

Auburn University

Project: Renovate historic Toomer's Corner at Auburn University's campus to enhance the pedestrian and vehicular experience and reflect the identity of the University.

Materials: Clay brick pavers (Pine Hall Brick Company)

Completion: 2015

AUBURN UNIVERSITY



PROVIDING INNOVATIVE SOLUTIONS TO COMPLEX PROBLEMS

REFERENCE PROJECT 4 - GRANITE

9th Avenue and 14th Street, New York City

Project: Transform a popular intersection in New York City's Meatpacking District utilizing granite cobbles, which have local and historical significance.

Materials: granite cobbles and granite pavers (ASL Stone)

Completion: 2020

9TH AVENUE & 14TH STREET,



PROVIDING INNOVATIVE SOLUTIONS TO COMPLEX PROBLEMS

ARTISTIC DESIGN CONSIDERATIONS

Artistic brick patterns can be achieved using standard materials and colors from reputable suppliers.

Matching the color palette at each intersection and with the surrounding pedestrian environment contributes a more unified space.

Colors in concrete brick pavers are prone to fading, but clay brick (aka true brick) pavers are not prone to fading.

Color contrast is important for a design to be legible.

Customized colors and precut options are possible through specialty manufacturers such as PaverArt.

The overhead plan view of the design will not be seen by most users.

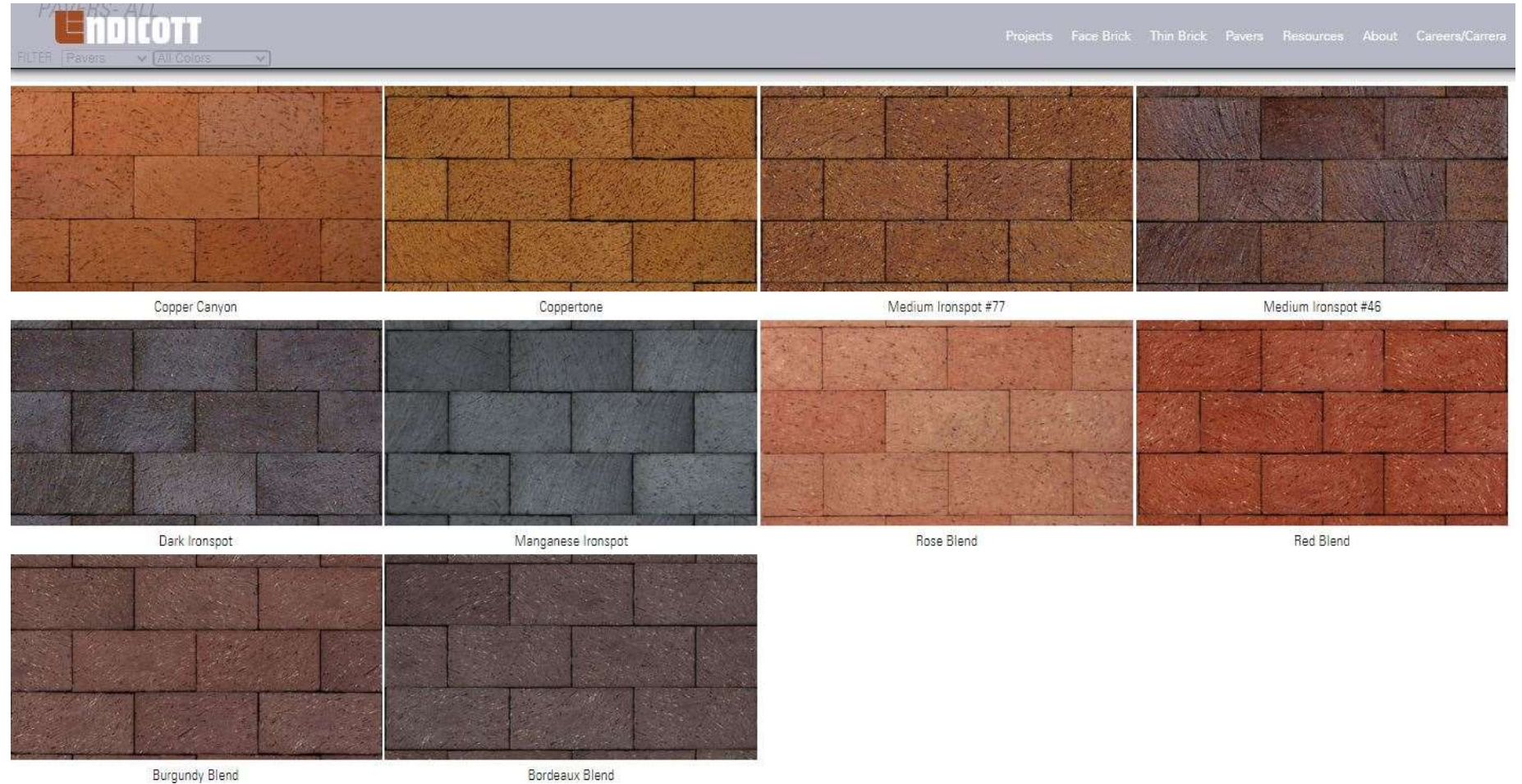
Existing or proposed utilities may be located within the design.

Granite has regional significance and may be modular or dimensionally cut to many shapes



BRICK PALETTES

Endicott brick paver
Palette (beveled
edges with spacers)



BRICK PALETTES



Brick • Galleries • Company • Resources • Where To Buy • News • Contact

Distributor Login

Search catalog color, size, text.

Search catalog color, size, texture.

CITY LINE SERIES PAVER STYLES AVAILABLE



Type

Paver

Colors

- Black
- Brown
- Buff
- Gray
- Red

Textures

Manufacturing Methods

Sizes

Series

City Line



Landmark Pavers Lighthouse 8x8 Pavers Lighthouse Pavers Nutmeg Clear 8x8 Pavers



Nutmeg Clear Pavers Nutmeg Full Range 8x8 Pavers Nutmeg Full Range Pavers Regimental Full Range 8x8 Pavers



Regimental Full Range Pavers Regimental Red 8x8 Pavers Regimental Red Pavers Sienna Blend 8x8 Pavers



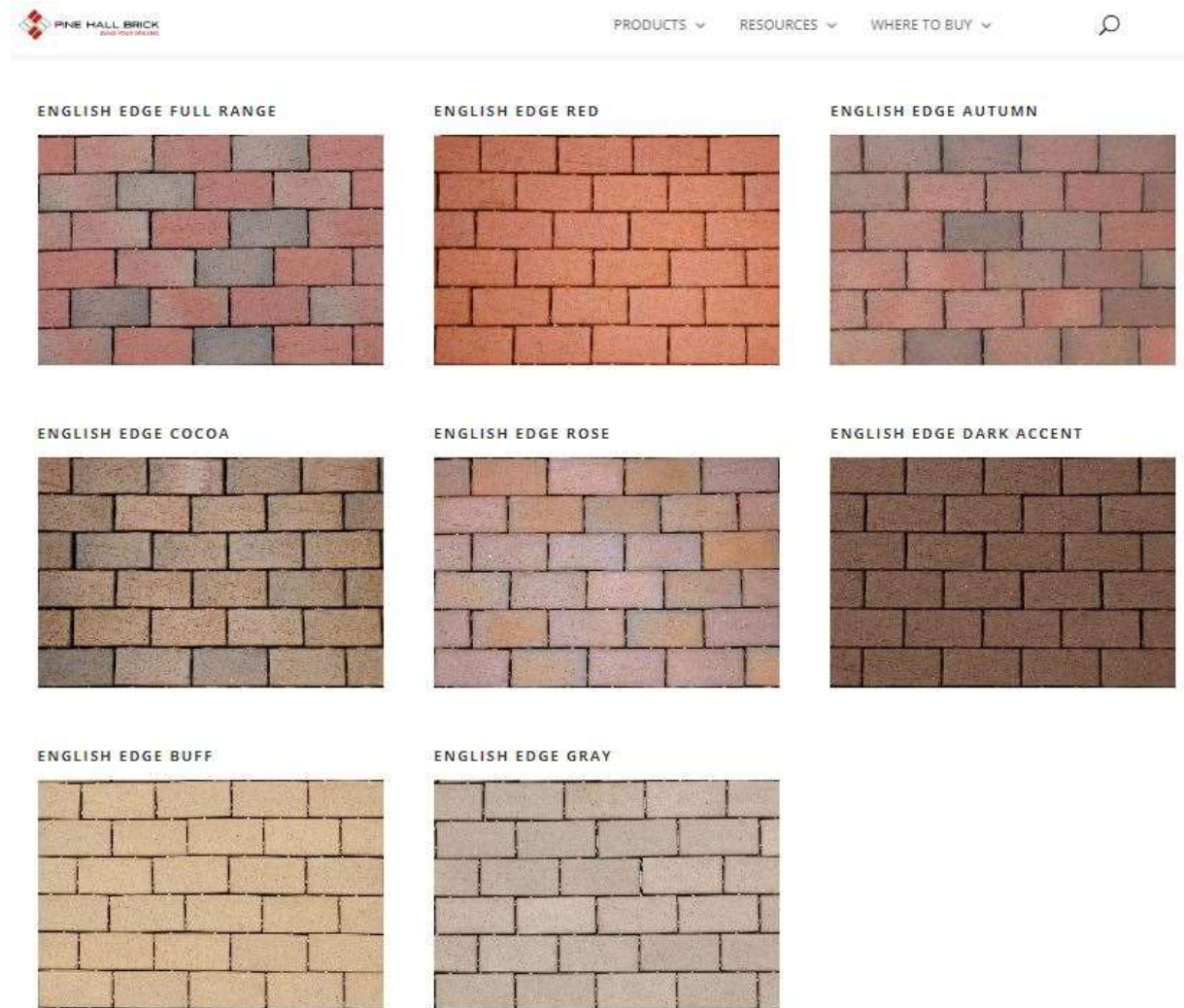
Sienna Blend Pavers Wheatfield 8x8 Pavers Wheatfield Pavers

PROVIDING INNOVATIVE SOLUTIONS TO COMPLEX PROBLEMS



BRICK PALETTES

Pine Hall brick paver
Palette (beveled
edges with spacers)












CONCRETE PAVER PALETTES

Product Line Shapes Finishes Colors

Hide Filter Options

Unilock heavy duty vehicular pavers

Displaying 8 of 41 items

 <p>ANCHORLOCK™ 1 Size 1 Finish 1 Color</p>	 <p>ECO-LINE® CLASSIC 1 Size 1 Finish 1 Color</p>	 <p>ECO-OPTILOC™ 2 Sizes 1 Finish 1 Color</p>	 <p>ECO-PRIORA™ 1 Size 1 Finish 2 Colors</p>
 <p>ECO-PRIORA™ PREMIER 1 Size 1 Finish 1 Color</p>	 <p>ECO-PROMENADE® 1 Size 1 Finish 3 Colors</p>	 <p>ECO-PROMENADE® CLASSIC 1 Size 1 Finish 1 Color</p>	 <p>HEX™ 1 Size 3 Finishes 8 Colors</p>
 <p>NORDIC COBBLE® 1 Size</p>			

Hollandstone colored concrete pavers



Unilock Series™ pavers



GRANITE PALETTES

Georgia Blue or Grey
Granite (sourced from
Elberton, GA)



ASD Stone (granite)



PRACTICAL CONSIDERATIONS

Craftsmanship is important, especially with more intricate designs.

High intensity use will result in stains and spots.

Bricks should have spacers (lugs) to provide even brick placement. Beveled edged may be desirable to provide texture to vehicles passing over.

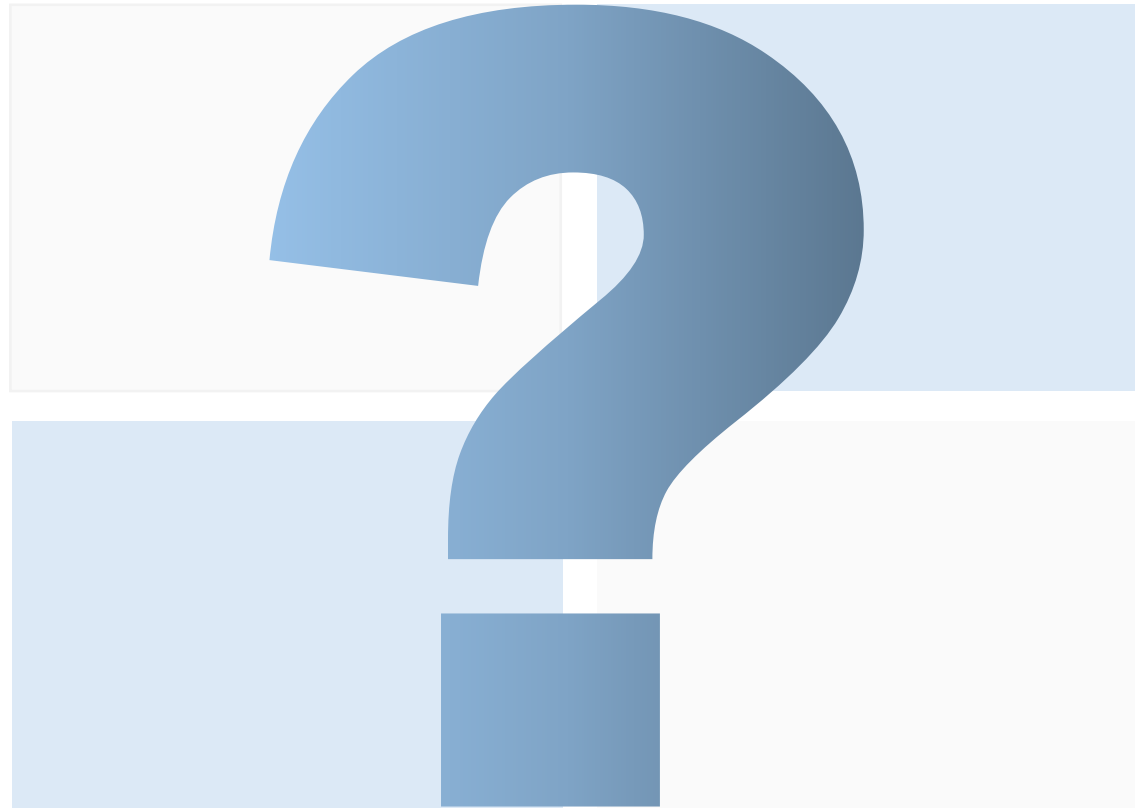
Rigid base systems should be used to prevent settling or movement.

Concrete pavers can simulate granite.

Cost considerations



QUESTIONS



REFERENCE LINKS

Vibe creative district intersection art

<https://vibecreativedistrict.org/19th-st-intersection-paver-artworks/>

Lemon Avenue Streetscape Project, Sarasota, FL

<https://pinehallbrick.com/streetscape-celebrates-sarasotas-pride-of-place/>

9th Avenue and 14th Street, New York City

<https://marveldesigns.com/work/gansevoort-streetscapes/295>

ASL granite (streetscape, colored granite examples)

<https://aslstone.com/applications/>

Cold Spring- Granite pavers

[CS-Technical-Data-Sheet-Tumblestone.pdf \(coldspringusa.com\)](#)

NYC granite paver application study

[HDC_Historic Streetscape Study.pdf \(beingheredesign.com\)](#)

Unilock Series pavers

https://commercial.unilock.com/products/architectural-regional-ar/?prod_type=flatwork&tax=line&by=series&sri_to=42