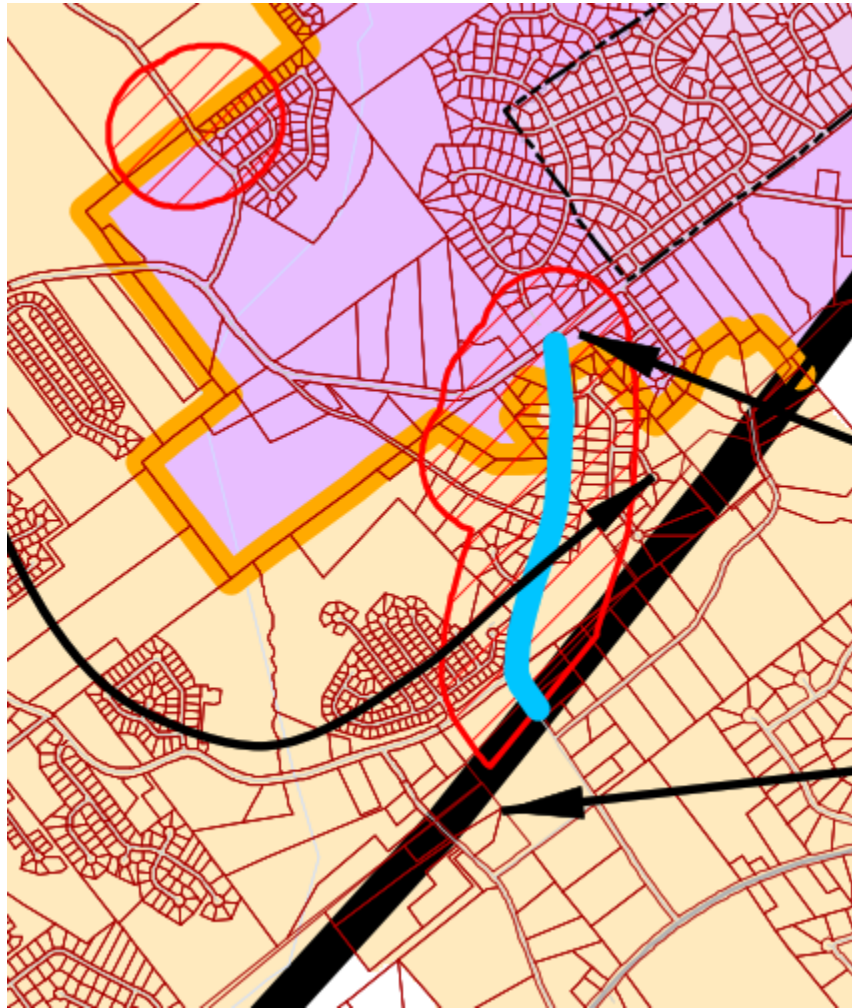


Gwinnett County Countywide Safety Plan – Revision to Boundary 8 Comparison

Current Boundary 8 - Approved on February 17, 2016
Lavender – City of Lawrenceville Territory
Beige – AGL Territory



Proposed Boundary 8 – Revised boundary at 4220 Smith Road.
Lavender – City of Lawrenceville Territory
Beige – AGL Territory

