

The background image shows an outdoor park setting. In the foreground, there is a concrete walkway and a large, rough-hewn rock. To the left, a blue structure, possibly a playground or sports equipment, is partially visible. In the middle ground, there is a long, low building with a blue roof, likely a restroom or utility building. The background features green grass, trees, and a tall stadium light tower under a blue sky with scattered white clouds. A semi-transparent blue rectangular overlay covers the center of the image, containing the text.

LA VERNIA PARK RESTROOM UPDATE

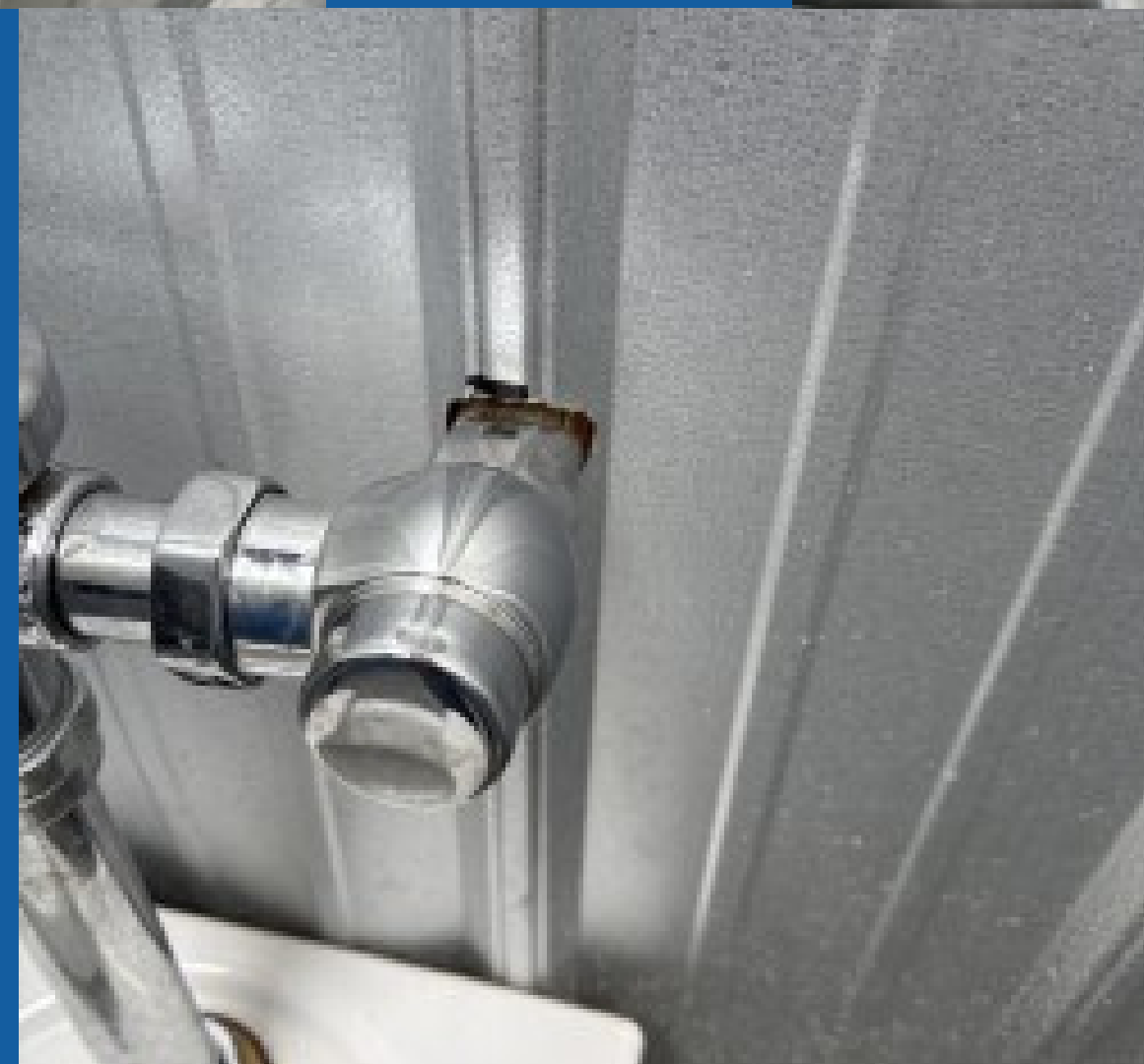
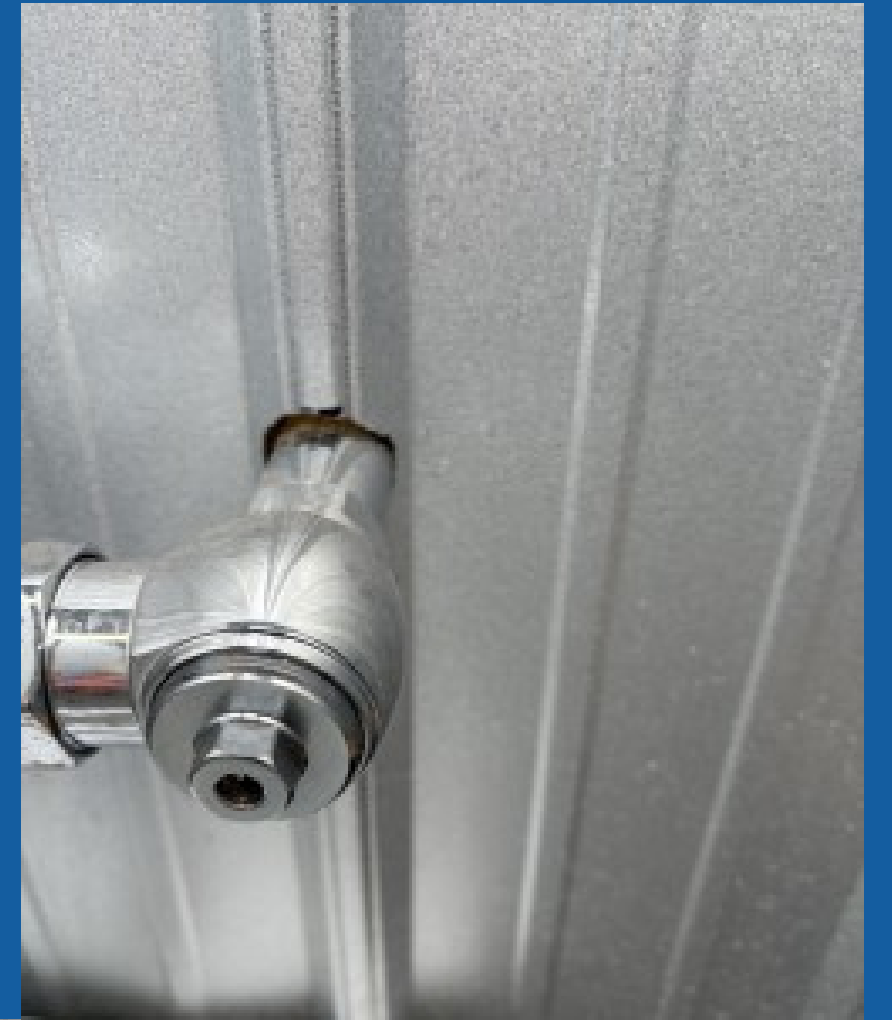
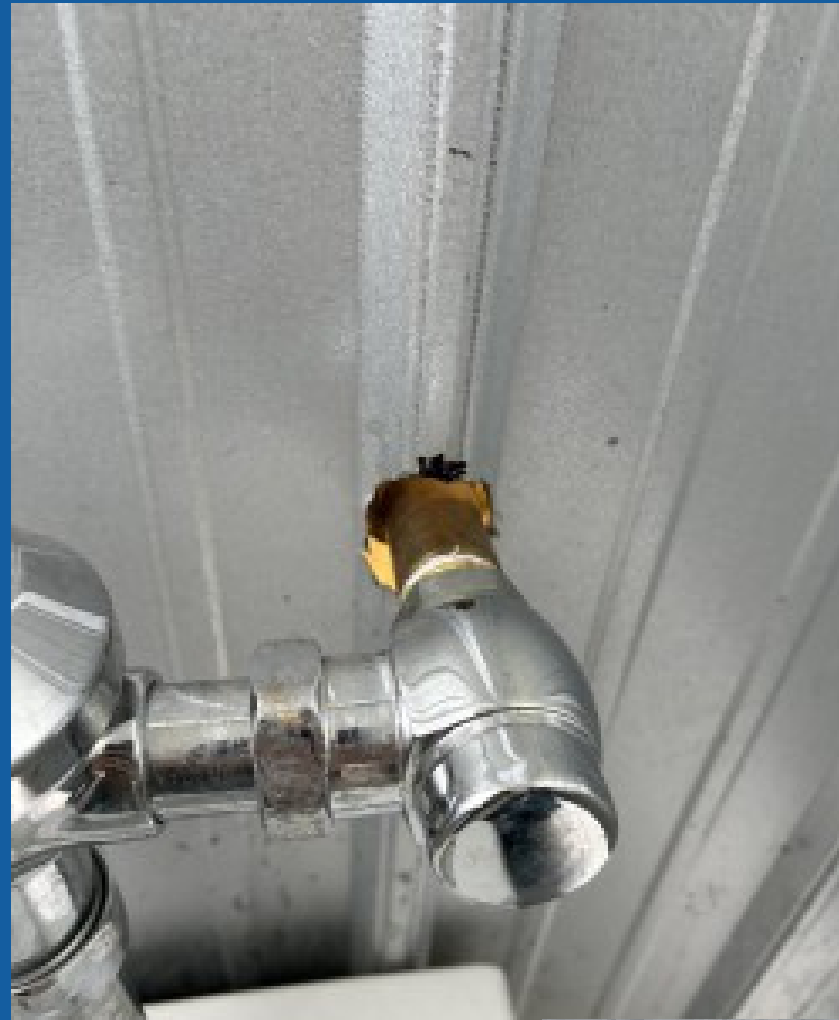
DISCUSSION OF PARK RESTROOMS

Completed Sealed structural gaps in restroom exterior to address privacy and security concerns Installed feminine hygiene waste receptacles in women's restroom stalls.

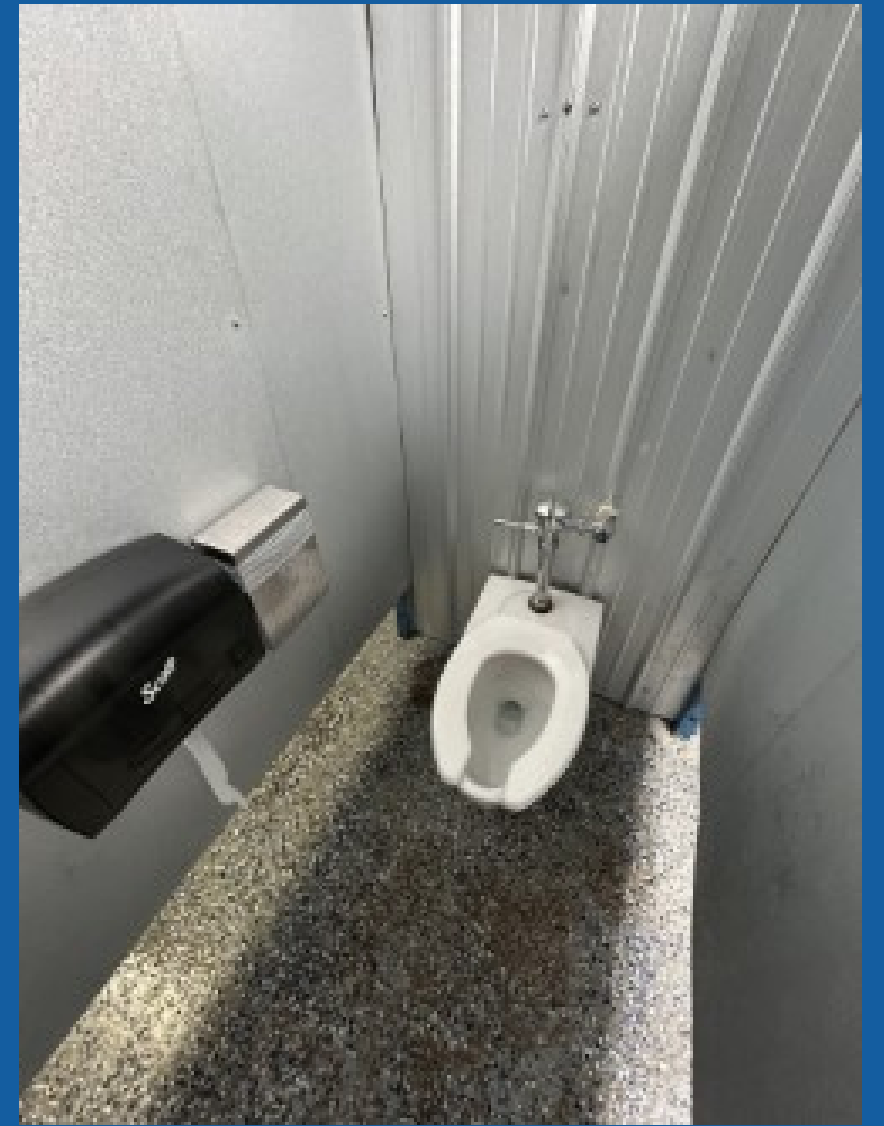
In Progress Coordinating with fabricator to enclose exposed wiring and plumbing under sink fixtures Obtaining contractor quotes for gutter installation along restroom and pavilion rooflines to address water pooling identified during recent rain events.

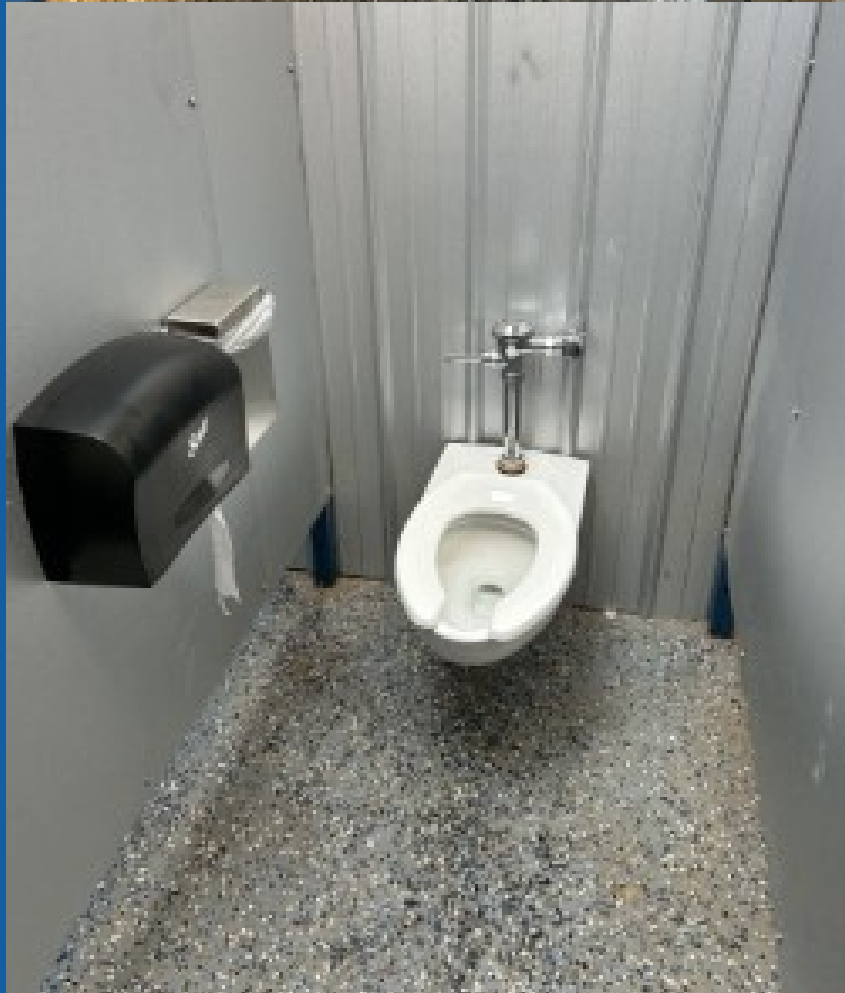
Upcoming Soliciting bids for site grading to direct stormwater toward the planned park drainage improvement project

BEFORE:



AFTER:





DRAINAGE:

