



City of La Vernia

# 2025 Water, Wastewater & Drainage Impact Fee Update

MAY 2025

PREPARED BY:



**Southwest  
Engineers**



# WATER IMPACT FEES



CURRENT RATE: \$4,320

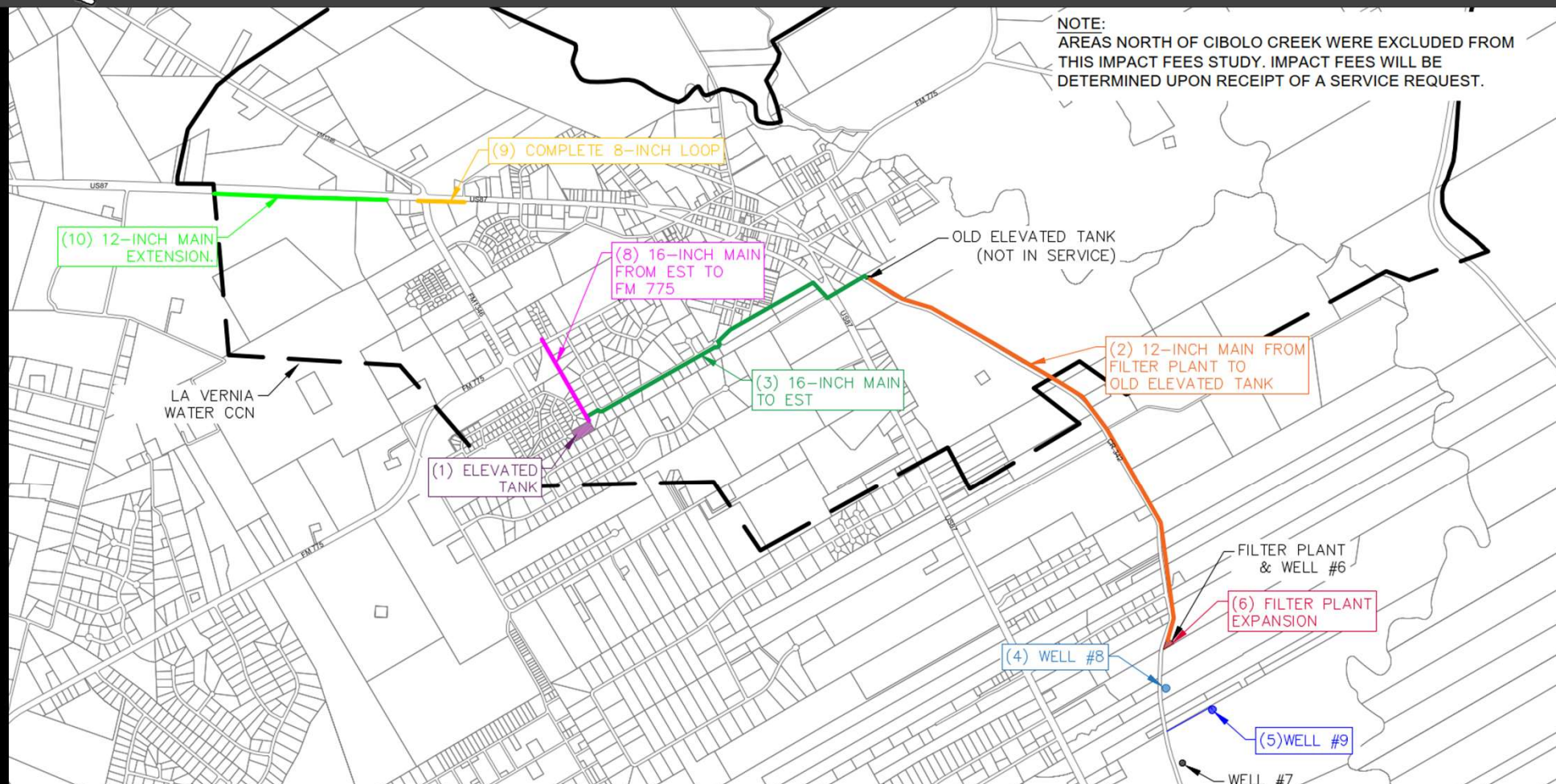
PROPOSED RATE: \$5,985.85

- 12 PROJECTS
- CCN 4,740 ACRES (1,700 ACRES NORTH OF CIBOLO CREEK)
- <10% PROJECTED GROWTH SOUTH/ WEST OF CITY

[www.reallygreatsite.com](http://www.reallygreatsite.com)



# WATER IMPACT FEES





# WASTEWATER IMPACT FEES



CURRENT RATE: \$1,155

CENTRAL PROPOSED RATE: \$3,375.53

EAST PROPOSED RATE: \$4,039.60

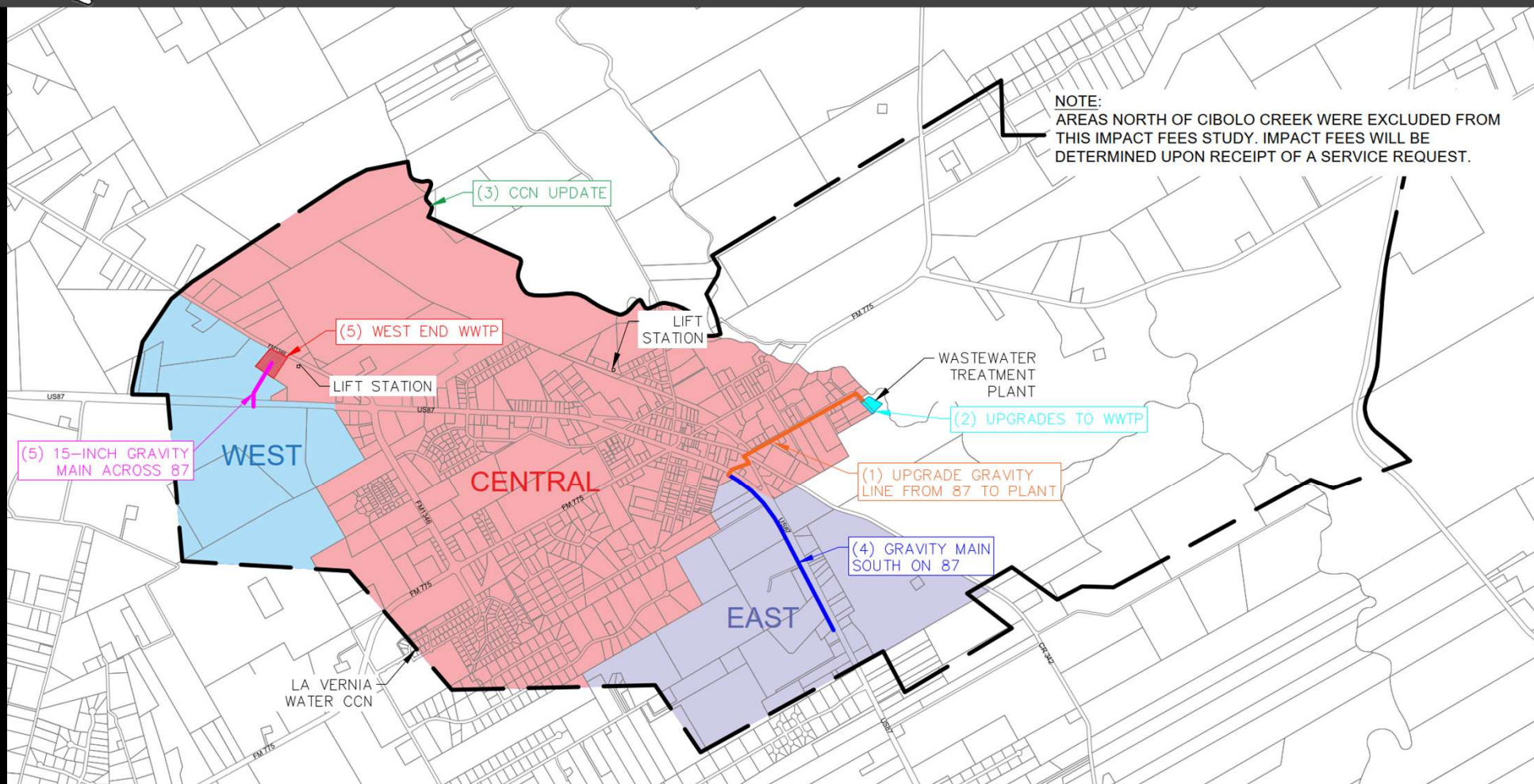
WEST PROPOSED RATE: \$6,083.10

- 3 AREAS TO BE CHARGED DIFFERENT FEES
- SERVICE AREA BASED ON WATER CCN, ALTHOUGH SEWER SERVICE AREA CURRENTLY COUND BY CITY LIMITS
- POTENTIAL TO EXPAND SEWER SERVICE AREA AND CHARGE DEVELOPERS OUTSIDE OF CCN HIGHER IMPACT FEES

[www.reallygreatsite.com](http://www.reallygreatsite.com)



# WASTEWATER IMPACT FEES





# DRAINAGE IMPACT FEES



PROPOSED RATE: \$50/1,000 SF OF IMPERVIOUS COVER ABOVE 20%

- DEVELOPMENTS SOUTH OF 87 WILL REQUIRE INCREASED CULVERT ALONG 87
- SERVICE AREA BASED ON CITY LIMITS

## 1 ACRE SINGLE FAMILY LOT W/ 25% IMPERVIOUS COVER

25%-20% = 5% over 20%  
1 ac = 43,560sf  
43,560 X 0.05 = 2,178sf  
2,178sf/1000sf = 2.178 Stormwater Service Units (SSU)  
2.178 SSU X \$50/SSU = \$108.90 Stormwater Impact Fee

## 1 ACRE SINGLE FAMILY LOT W/ 25% IMPERVIOUS COVER

80%-20% = 60% over 20%  
5 ac = 217,800sf  
217,800 X 0.60 = 130,680sf  
130,680sf/1000sf = 130.68 Stormwater Service Units (SSU)  
130.68 SSU X \$50/SSU = \$6,534 Stormwater Impact Fee



# DRAINAGE IMPACT FEES

