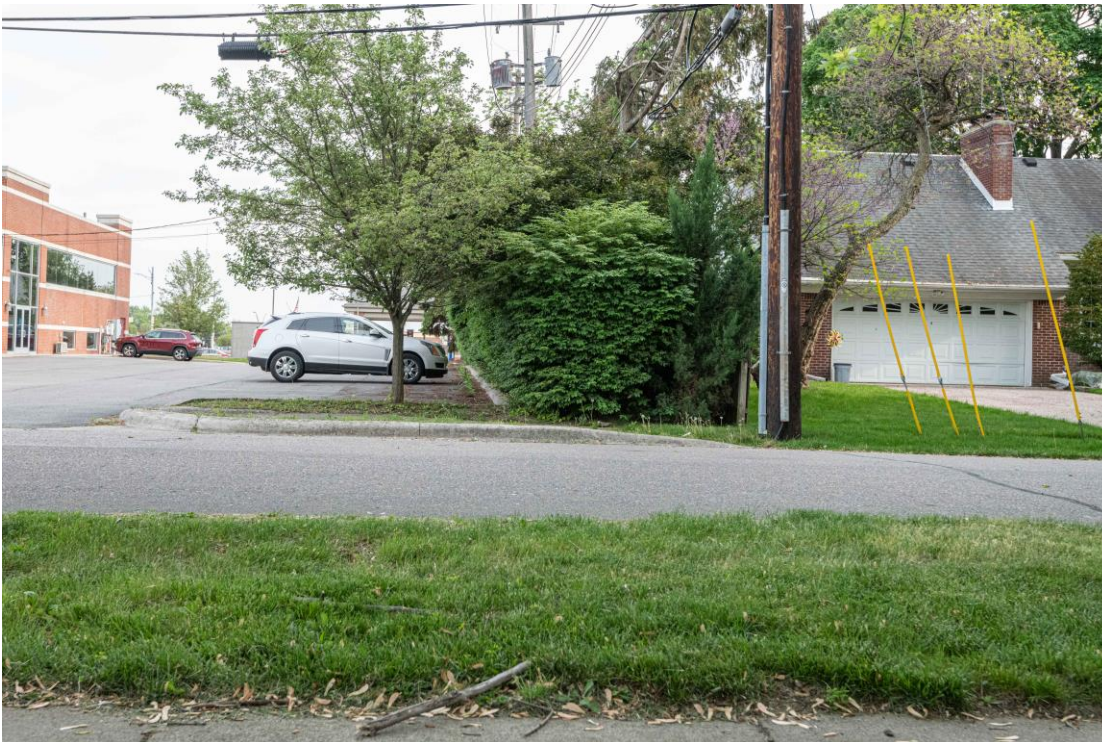


The image below looks northward down the public alley way . The alley extends from the chain link fence on the left to about where the white arrow points on the right.

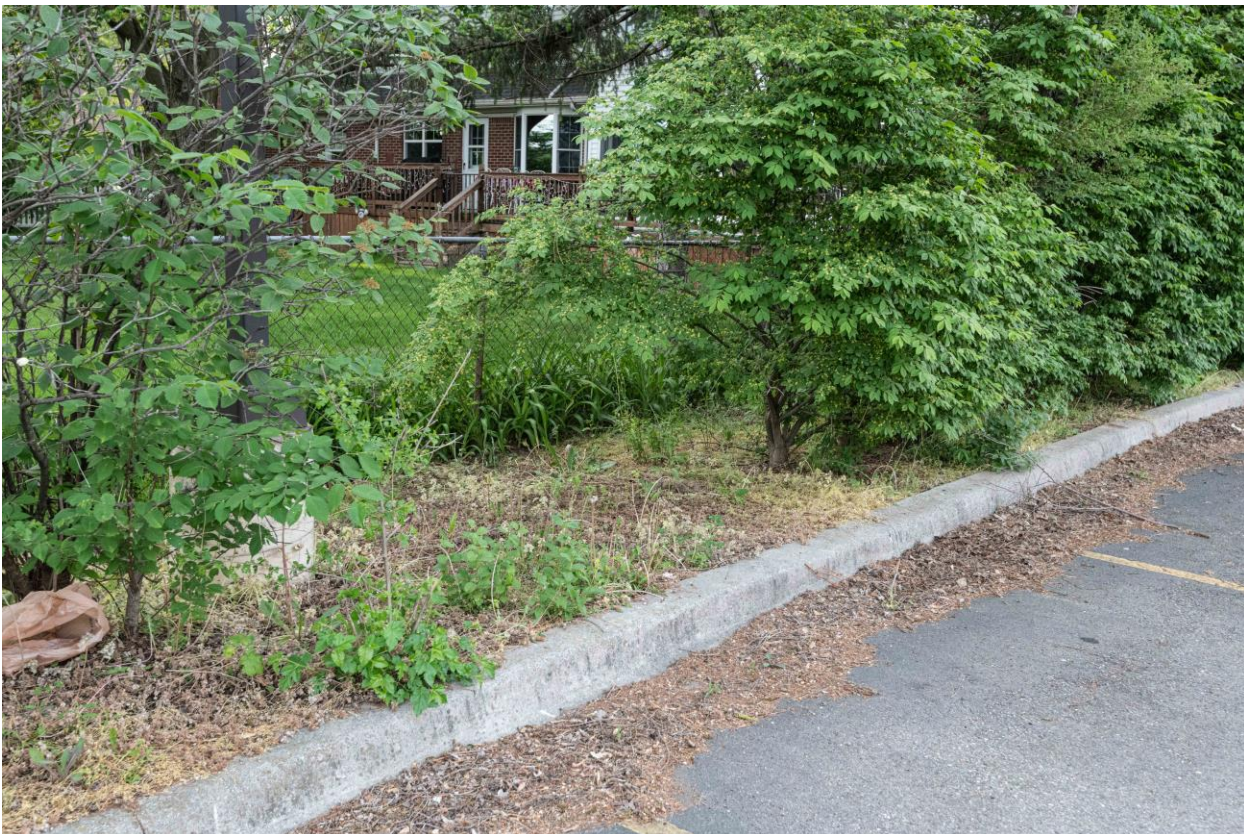


The image below looks southward down the public alleyway. One of the two commercial buildings can be seen on the left along with the residential home to the right.





The two images below illustrate the normal unmaintained condition of the landscaped section of the alley.





The images below illustrate the trash that accumulates every week. The filled bag is an example of the amount of trash that I collect during each weekly trash walk that I do along the fence line on the alley side.

