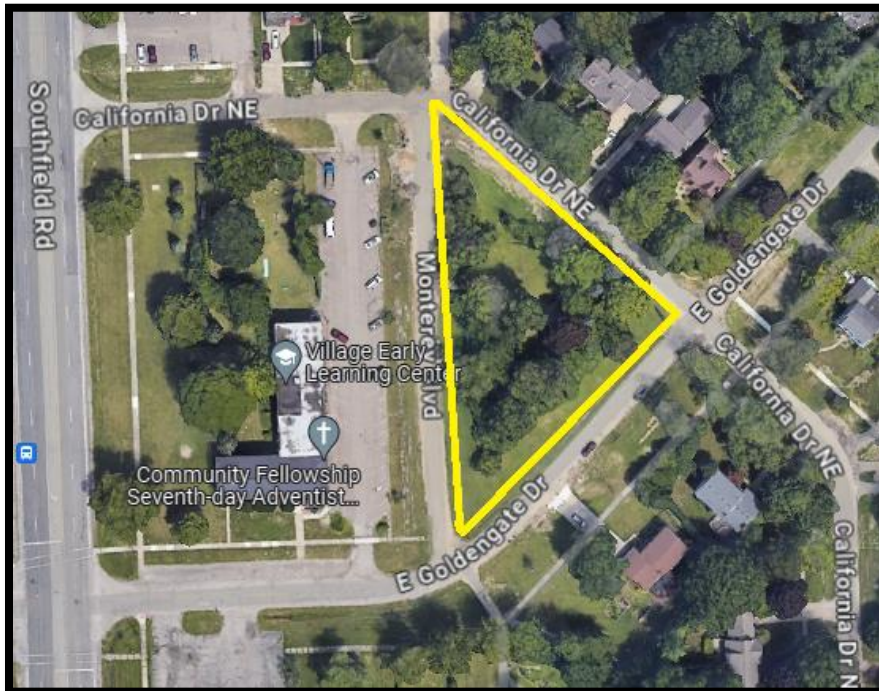




27400 Southfield Rd
Lathrup Village, MI 48076
(248) 557 - 2600
www.lathrupvillage.org

To: DDA Board of Directors
From: Austin Colson – Community & Economic Development /DDA Director
Date: July 16, 2024
RE: 27907 California Dr.

A recent review of property records has revealed that a vacant lot, located at 27907 California Drive, is owned by the Downtown Development Authority (DDA). This discovery presents an opportunity for the DDA to evaluate potential uses for the property in line with our strategic goals.



B. VILLAGE CENTER DISTRICT USES

Use	Floor	
	Ground Floor	Upper Floor
Commercial Uses		
Restaurant, bar, tavern, live entertainment	P	P
Personal Services [□]	P	P
Bed & Breakfast, inn, hotel	P	P
Retail commercial uses [□] up to 6,000 sq. ft.	P	S
Grocery store up to 10,000 sq. ft.	P	
Post office and other government services	P	P
Professional & administrative offices [□]		P
Business service uses [□]	P	P
Establishments involving the manufacture or sale of any alcoholic beverages regulated by the Michigan Liquor Control Act, MCL 436.1101 et seq.	S	S
Banks and other financial institutions	P	P
Outdoor cafes	P	P
Temporary outdoor display and sales §36-4.14	A	A
Adult day care centers [□] §36-4.15	S	S
Recreation, Education & Assembly		
Library, museum	S	P
Child care centers [□] §36-4.15	S	S
Theater, cinema, performing arts, places of worship §36-6.2	S	S
Instruction centers for academic and fine arts purposes	P	P
Health/Fitness facility	P	P
Residential Uses		
Home occupations/Live-Work	P	A
Single family attached		P
Multiple family		P
Accessory uses, customarily incidental to permitted uses	A	A
Uses similar to the above uses, as determined by the Planning Commission	P*/S**	P*/S**
Publicly owned and operated parks and parkways		