



Proposal For:
Lathrup Village
Holiday Lighting Installation
City Hall Grounds

Prepared By:
Pink Pro Services, LLC
4166 Dixie Hwy.
Waterford, MI 48329
248-202-7636

Submitted To:
Lathrup Village
Tom Kennedy
tkennedy@lathrupvillage.org

September 2025

Experience and Qualifications	3
Company Overview	3
Foundations	3
Company Values	4
Community	4
Company Competencies	5
Pink Pro Wash	5
Pink Pro Holiday Lights	5
Organizational Chart	5
Staff Experience	5
City Liaison	5
Lighting Expertise	6
Commercial Experience References	7
iHeartRadio	7
Leaf and Bud Detroit	8
Merril Lynch	9
Plan of Action	10
Preparation	10
Timeline	10
Protection of Property	10
Contingency	11
Maintenance (during display period)	11
Removal (end of display period)	11
Proposed Design Mock-Ups	12
Pricing	14

Experience and Qualifications

Company Overview

Pink Pro Wash was founded in 2019, dedicated to providing top-notch pressure washing services to residential customers. Since then, we have built a reputation for reliability and high-quality work, expanding our offerings to include seasonal decoration services with Pink Pro Holiday Lights.

Foundations

We started Pink Pro Wash as a response to the growing need for professional and effective exterior cleaning services. We continually recognized that many property owners struggle with maintaining the cleanliness and appearance of their homes and businesses, particularly when it comes to tough stains, algae and moss buildup or the need for homes and businesses to look inviting.

The company aimed to provide high-quality pressure washing and soft washing services that not only enhance curb appeal but also help protect and preserve the value of properties. With a focus on customer satisfaction, eco-friendly practices, and professionalism, we sought to fill a gap in the market for reliable cleaning services that deliver noticeable results.

After successfully completing our inaugural season in the power washing industry, we strategically expanded our services to include permanent and holiday lighting solutions. In September 2020, our team participated in comprehensive training focused on Christmas lighting, which equipped us with the skills and knowledge necessary to launch our first holiday lighting season immediately afterward. This expansion reflects our commitment to offering diverse and high-quality services that meet the evolving needs of our customers. We just completed our 5th season of Holiday lighting.

Company Values

Pink Pro Wash is built on several core values that guide our operations and customer interactions. First and Foremost these include **FIGHT**:

F - Fun: We cultivate a positive and enjoyable work environment, believing that having fun in our tasks enhances creativity and productivity.

I - Integrity: We conduct our business with the highest level of integrity, ensuring transparency and honesty in all interactions to foster trust and reliability with our clients.

G - Giving: We are committed to giving back to the community through active engagement and support initiatives that benefit local organizations and individuals.

H - Honesty: We value honesty as a fundamental principle, ensuring that our actions align with our words and fostering an environment of open communication.

T - Teamwork: We prioritize collaboration and teamwork, recognizing that working together effectively leads to outstanding results and strengthens our organization.

Along with our core values we prioritize the needs and satisfaction of our clients, striving to exceed expectations with each service. We are committed to delivering high-quality results through skilled workmanship and attention to detail. We Maintain a high standard of professionalism in all interactions, including punctuality, appearance, and communication. We strive continually for innovation and improvement in our services, techniques, and customer engagement.

Community

We partner with Five Points of Hope, an non-profit organization based out of Milford that raises money for Michigan cancer patients who are in financial crisis. A percentage of every paid invoice goes to this organization to help with finances that affect people with cancer.

We are proud to collaborate with many local area charities and support missions fighting cancer including U CAN-CER VIVE. Recently, we formed a partnership with Hot Pink Helpers to provide our services to patients and recipients who are bravely battling cancer. In addition, we have made donations and worked alongside organizations such as St. Jude Children's Research Hospital, On A Dragonfly's Wings, and local Waterford schools.

Furthermore, we are active members of the Waterford Chamber of Commerce and the Birmingham Bloomfield Chamber of Commerce, which allows us to connect with our community and contribute to local initiatives effectively.

Company Competencies

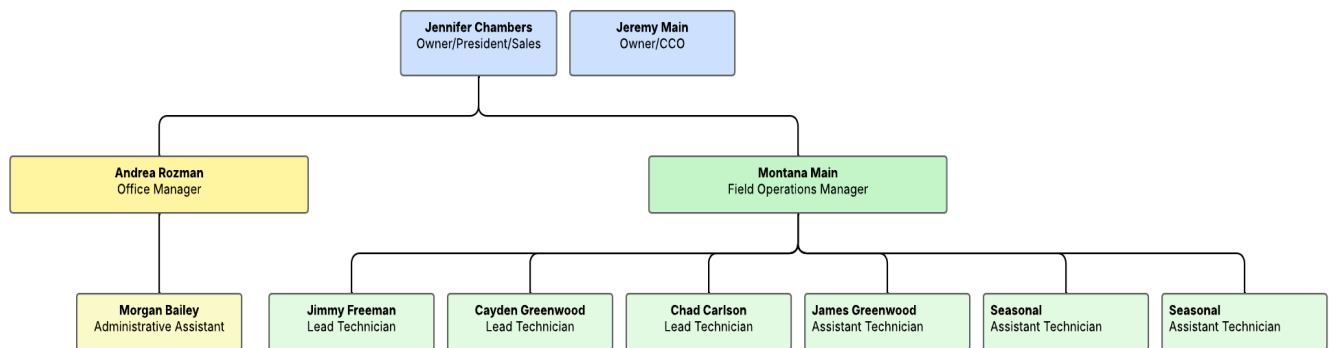
Pink Pro Wash

This division specializes in professional pressure washing services aimed at rejuvenating the exterior surfaces of homes and commercial properties. Services include house/building washing, roof cleaning (removing algae from the shingles/tile/slate or cedar), power washing, driveway cleaning, deck restoration, dryer vent cleaning, window cleaning and brick paver cleaning and sealing. The goal of Pink Pro Wash is to help homeowners, business owners or property managers maintain the beauty and longevity of their properties while providing a clean, inviting environment.

Pink Pro Holiday Lights

Offering decoration services, Pink Pro Holiday Lights is committed to creating enchanting holiday displays for residential and commercial properties. Our services include design consultation, installation, maintenance, and takedown of holiday lighting and decor. We are known for our creativity, attention to detail, and commitment to safety, ensuring that each display enhances the festive spirit of the season or any holiday!

Organizational Chart



Staff Experience

All installation technicians have had professional Christmas light training held with a Christmas lights coach, in-person training with introduction to the Christmas lights industry, including safety protocols, equipment maintenance, and effective install techniques.

City Liaison

(primary) Jennifer Chambers, President, 248-818-0949, jennifer@pinkprowash.com

(alternate) Montana Main, Operations Manager, 248-847-9773, montana@pinkprowash.com

Lighting Expertise

With years of expertise in holiday lighting and decoration, our team of skilled professionals is adept at designing and implementing a diverse range of lighting displays, from intricate residential setups to grand-scale commercial projects. We meticulously plan each installation to ensure safety, efficiency, and visual appeal, using only the highest quality materials and the latest technology. Our commitment to excellence and attention to detail have earned us a reputation for delivering stunning and memorable holiday displays.

Our expertise in working with commercial properties encompasses a diverse array of industries, including:

- Restaurants
- Dispensaries
- Residential Property Management
- Retail Property Management

Commercial Experience References

iHeartRadio

2529 Orleans St. Detroit, MI

Install Date: October 28, 2024

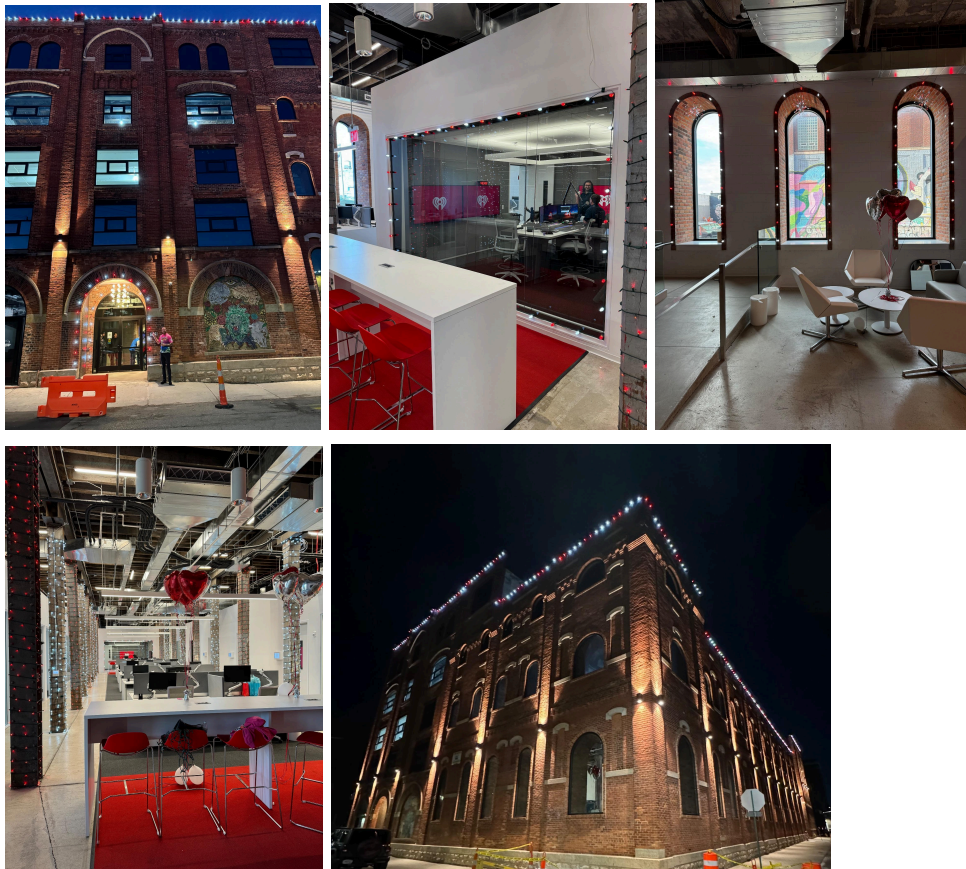
Angel Tedesco, Sr. Account Rep

angeltedesco@iheartmedia.com 248-420-1986

iHeartRadio was moving from their Farmington Hills office to downtown Detroit in Eastern Market and requested that their new building exterior and interior office spaces be lit to both celebrate the new building as well as launch the holiday season in November on WNIC when the radio station switched from Top 40 to Holiday music.

Our team lined the exterior roofline of the building and the entrance archway with red and white commercial grade bulbs. Within the office and studio space we lined the arched windows and the DJ studio. Finally we wrapped all the pillars in the main office area with red and white mini lights.

This was our third year working with iHeartRadio, initially installing holiday lights at their Farmington Hills office beginning in 2022.



Leaf and Bud Detroit

Detroit, Hazel Park, Center Line, Battle Creek, Ann Arbor

Install Date: December 14, 2022 and ongoing

Mark Savaya, Owner

mark@futuregrowsolutions.com 833-532-3283

The client requested exterior vertical lighting with branded coloring at all Leaf and Bud dispensary locations in Michigan.



Merril Lynch

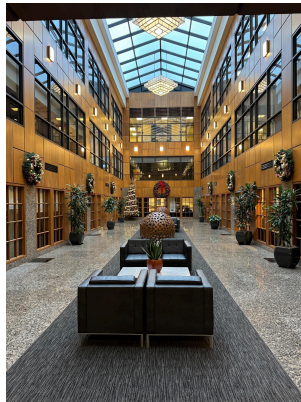
39577 Woodward Ave, Bloomfield Hills, MI

Install Date: November 22, 2024

Mark Kostukovsky, Project Manager, Engineering Services

Pmadmin@grandsakwa.com 248-470-0009

The client requested holiday lighting and decor for the exterior and interior of their office building, to be installed in time for the annual office party. We wrapped multiple bushes at the entrance to the building along with lighting trees (up to 20 ft). In the interior common area we installed multiple wreaths and set up and decorated a 12 ft Christmas tree.



Plan of Action

Estimated start date: October 2025

Estimated completion date: October 2025

Team effort: One day, full time

Since the RFQ did not indicate a specific date for the installation, we would like to install during the last week of October. We can turn the lights on later on in November when your plans call for the lighting to begin. We can discuss a date that will be appropriate for you.

Preparation

Prior to installation, the Liaison will review all of the lighting and/or locations beforehand and connect with the point of contact at Lathrup Village to discuss any additional issues that may have occurred since the time the bid was awarded.

Secondarily, reviewing the locations beforehand will provide us with extra insight as to additional tools we may need to assist with installations so that we are fully prepared.

Timeline

We expect to complete the installation in one day, barring unforeseen circumstances (i.e. weather issues).

Protection of Property

Pink Pro Services is committed to ensuring the utmost caution and respect for the surroundings and landscaping in the installation areas. Prior to commencing any setup, we will conduct a thorough assessment of the installation site to identify and evaluate potential hazards, such as overhead power lines, uneven ground, and obstacles like trees, structures, or fences.

To maintain a safe environment throughout the project, we will mark our work areas with caution tape and/or orange cones. In instances where our lifts or ladders may rest on delicate surfaces, such as flower beds or lawns, we will use protective mats or plywood sheets to distribute the weight and prevent damage.

During installation, we will secure our tools and materials by keeping them in a bucket or tool belt, and avoid leaning over the edge to prevent accidental drops. We will also ensure that all personnel utilize appropriate safety gear, including harnesses, helmets, and non-slip footwear while in the lift (if a lift is needed).

Maintaining clear communication between the crew on the lift and those on the ground is essential, particularly when moving the lift or handling materials. In the event of persistent

winds, we will refrain from performing installations in high places to mitigate the risk of accidents.

At the end of the day, the lead technician will conduct a comprehensive inspection of the surroundings to clean up lights, debris, and any other materials. By adhering to these precautions, we aim to ensure the safety of our crew and protect your property during the installation of the holiday lights and other lighting elements.

Contingency

While we anticipate a smooth installation, we do realize that problems can occur due to weather, staff illness, equipment failures, or other challenges that can occur. We feel that initiating the installation during the last week of October provides us with additional days of contingent time prior to November to ensure the display is up and functional.

Maintenance (during display period)

During the display period, any lighting failures will be addressed by our technicians within 24 hours of receiving notification. In the event that a lighting failure occurs resulting in the need for a significant amount of reinstallation work, the Liaison will provide a work plan to Lathrup Village along with a timeline for completion.

Removal (end of display period)

Lights and decor can begin any time after January 5, 2026. We're happy to work with your timeline.

Severe weather conditions may affect the removal timeline, and thus, work involving the use of a lift (if a lift is needed) will be completed to ensure the safety of employees as well as to ensure the surrounding landscaped areas are not damaged.

If the items cannot be removed without causing damage to landscaping, hardscaping or other areas (as in the case of heavy icing), the Liaison will communicate the issue to Lathrup Village, detailing a plan and timeline for future removal.

Proposed Design Mock-Ups

If you would like to have different color options, just ask. We happily accommodate different color choices.

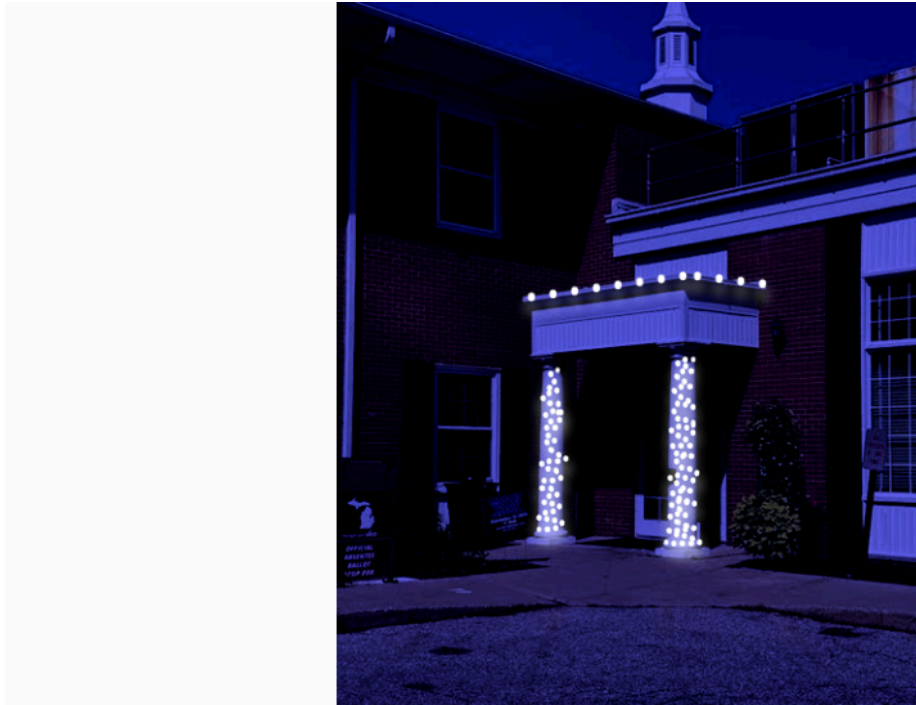
Front of City Hall - Roofline in white, columns candy cane wrapped in red and white.



Trees - 4 trees on left, 4 trees on right. All trunk-wrapped in white. Canopy-wrapped alternating red, green, red, green. (2 red trees, 2 green trees on each side)



Customer Entrances (2) - pillars wrapped in white minis with white C9s lining the top.



Town Hall Monument - garland draped with red ribbons on both sides of sign



Pricing

Our inclusive service is to install, maintain and remove the lights. All lights are wired to a timer. We use LED commercial-grade lights.

We are licensed and fully insured. Copies of our policies are attached.

ITEM	COST
City Hall Roofline lined with C9 warm white LED bulbs, measured to the exact roof line. Eight deciduous trees, trunk wrapped up to 10 feet in warm white mini LED lights, with alternating canopy-wrapped colors (4 red, 4 green) Four columns, candy-cane wrapped in warm white and red LED mini lights. City Hall monument sign draped in garland with 2 red bows on each side. Two public entrances with pillars wrapped in warm white minis with white C9s lining the top.	\$9,475.00