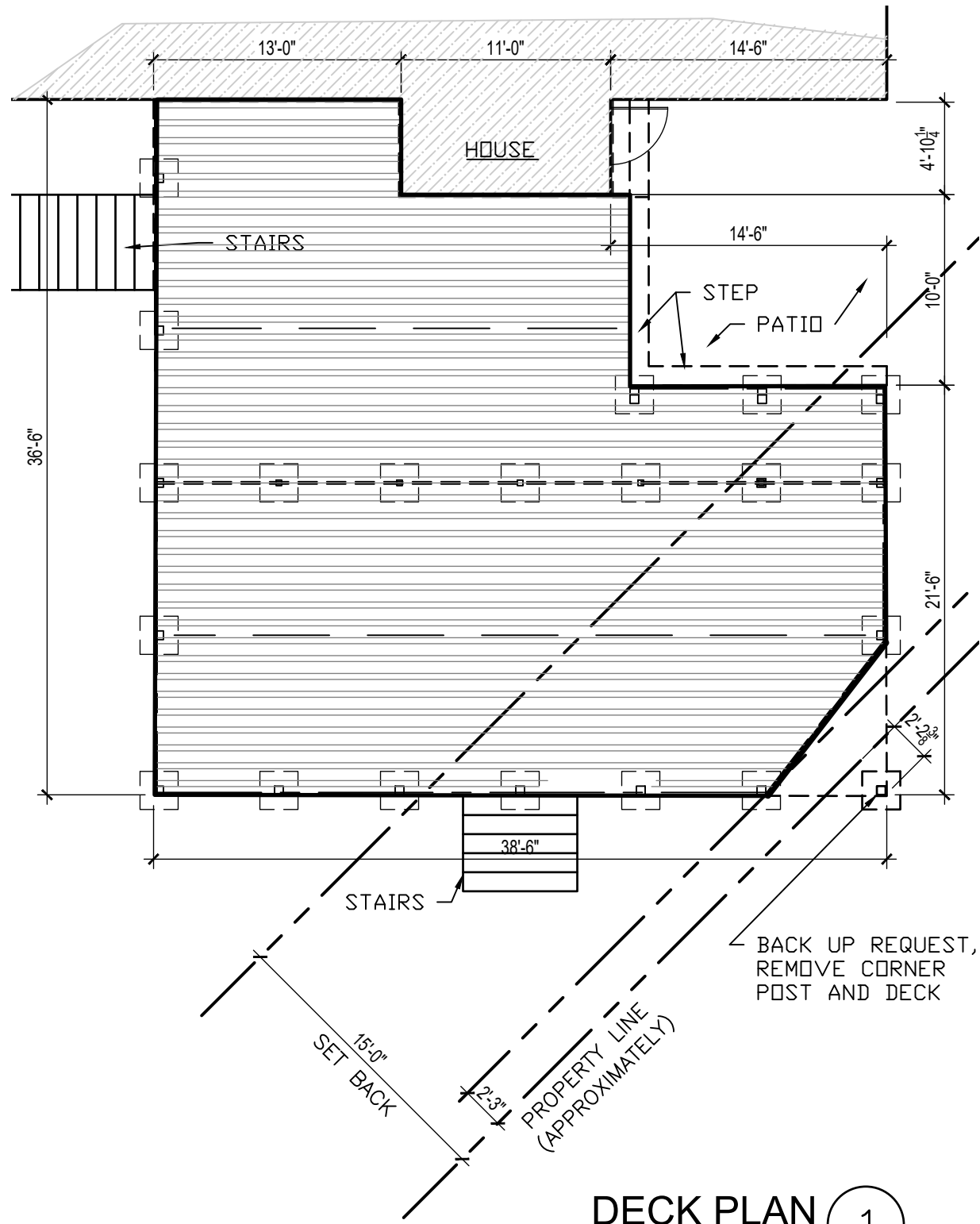
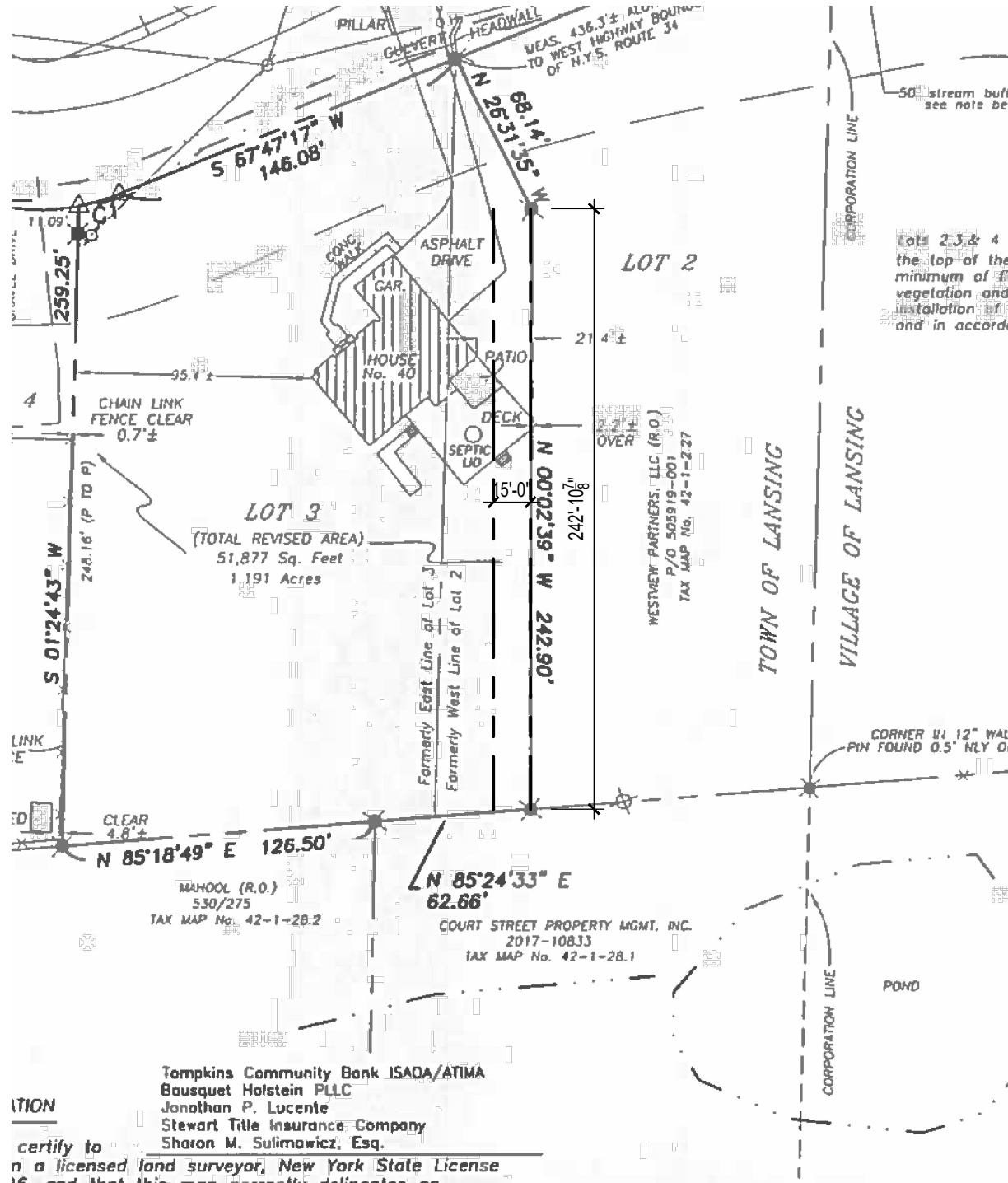
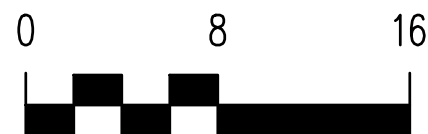


NEW YORK STATE EDUCATION LAW, ARTICLE 147. COMMISSIONER'S REGULATIONS, PART 69:  
IT IS A VIOLATION OF THE LAW FOR ANY PERSON, UNLESS ACTING UNDER THE DIRECTION OF A LICENSED ARCHITECT, TO ALTER THIS DRAWING IN ANY WAY.



**DECK PLAN 1**

SCALE: 1/8" = 1'-0"



certify to  
I am a licensed land surveyor, New York State License No. 16, and that this map correctly delineates an  
survey on the ground made by me or under my direct  
in and that I found no visible encroachments either  
on or across property lines except as shown hereon.

*Lee Brewer*  
DATED: 5/20/2022

 <b>LEEW P.C.</b> LAND SURVEYORS 100 E STREET, SUITE A ITHACA, NY 14850 607-272-6477	<b>TITLE:</b> <b>SURVEY MAP</b> <b>No. 40 SUN PATH</b> TOWN OF LANSING, TOMPKINS COUNTY, NEW YORK	REVISED: 5/20/2022 - SU ALL CORNERS FI	<b>CONCEPTS</b>	<b>PRE</b>
	<b>DATE:</b> 4/8/2020	<b>SCALE:</b> 1" = 60'	<b>DWG. NO.:</b> 2324-A-1	<b>DATE:</b> 01.02.2024 <b>SCALE:</b> NOTED <b>DRAWN:</b> pda <b>CHECKED:</b>

**EGNER**  
**Architectural Associates LLC**  
 ARCHITECTS • PLANNERS  
 INTERIOR DESIGNERS  
 408 WEST STATE STREET  
 ITHACA, NEW YORK 14850  
 PHONE • (607) 273 - 8280  
 FAX • (607) 272 - 6533  
 E - MAIL • mail@egnerarch.com

**DECK REVIEW**  
 40 SUN PATH ROAD  
 LANSING, NY