

POTENTIAL FUTURE 2ND DRIVEWAY ACCESS

1  
C1

42 SEACORD LN  
Parcel: 503289-37.1-2-53.222  
16.19 ACRES  
ZONE: B1

2 SITE PLAN KEY  
1" = 160'-0"



EXISTING POND

EXISTING BUILDING  
60x40

PROPOSED GRAVEL PARKING LOT  
35 SPACES TOTAL (1 HC)

FIRE APPARATUS TURNAROUND

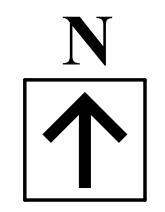
WIDENED NEW GRAVEL DRIVEWAY

NEW/ADJUSTED DRIVEWAY SWALE

EXISTING GRAVEL DRIVEWAY (HATCHED)

APPLE TREE(S)

DRIVEWAY LENGTH - 1,150 FT



1 SITE PLAN  
1" = 40'-0"

1 ENLARGED SITE PLAN  
1" = 20'-0"

