

Existing Subcatchment - 1 (ESC-1)  
 Existing Site Conditions - Area = 404,571 SF (9.29-AC)

Surface Conditions & Soils:  
 18% CB, Conesus Gravelly Silt Loam, LB, Lansing Gravelly Silt Loam  
 Hydrologic Soil Group (HSG) B  
 82.0% ICB, Illion Silty Clay Loam, OaA, Ovd Silt Loam  
 Hydrologic Soil Group (HSG) C

Runoff Curve Number =  
 CN 77 - 2-AC Lds, 12% Impv, Good HSG C Soils  
 CN 65 - 2-AC Lds, 12% Impv, Good HSG B Soils  
 CN 65 - Woods, Good HSG B Soils  
 CN 70 - Woods, Good HSG C Soils

Overland Stormwater Runoff - Longest Flowpath - 1,070-LF  
 Sheet Flow, Short Grass, 100 LF @ S = 2% avg. +/-  
 Shallow Conc. Flow, Grassed Waterway, 123 LF @ S = 2% avg. +/-  
 Shallow Conc. Flow, Wooded, 847 LF @ S = 3.3% avg. +/-

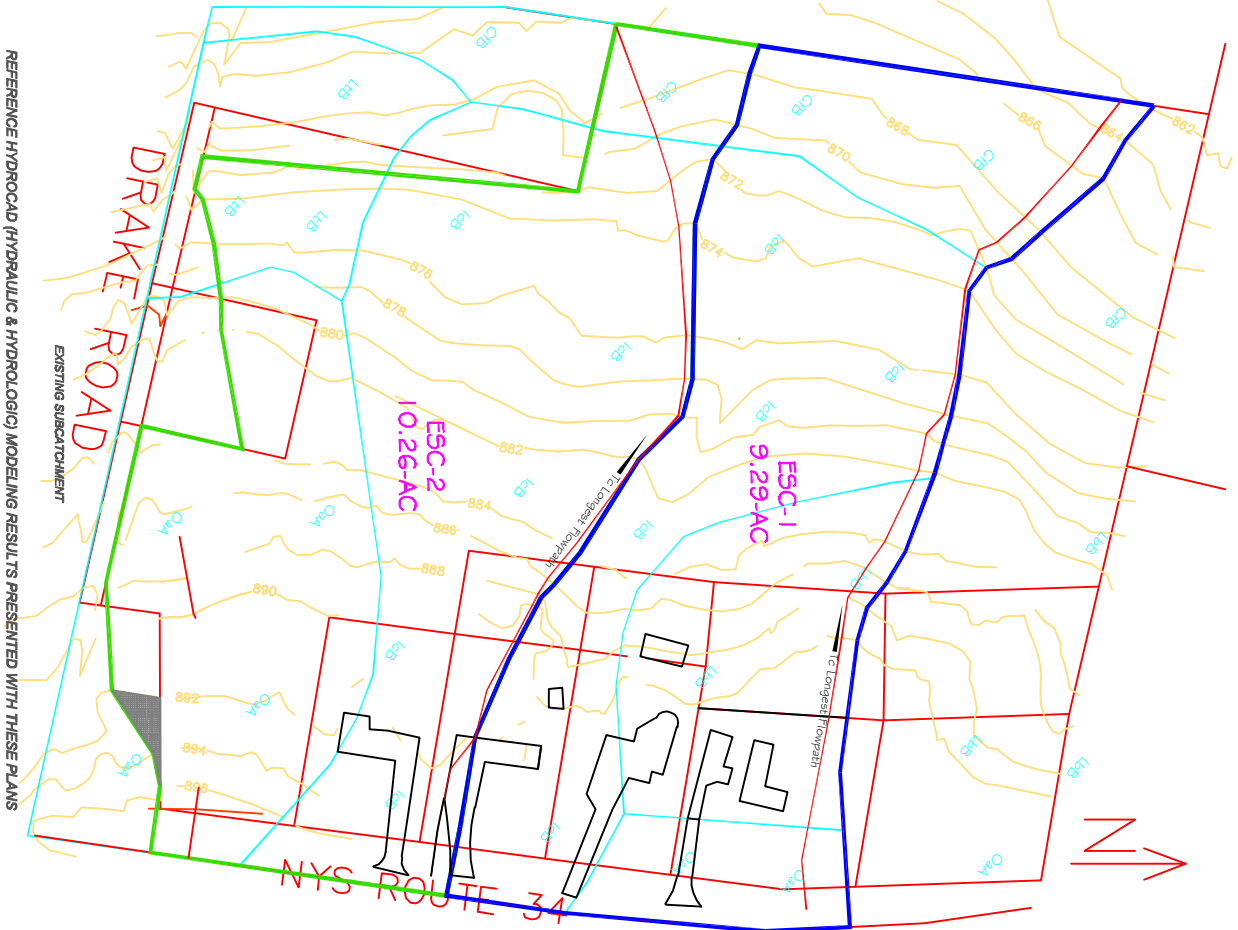
To Design Point 1 - (DPE 1)

Existing Subcatchment - 2 (ESC-2)  
 Existing Site Conditions - Area = 446,866 SF (10.26-AC)

Surface Conditions & Soils:  
 12% CB, Conesus Gravelly Silt Loam  
 Hydrologic Soil Group (HSG) B  
 82% ICB, Illion Silty Clay Loam, OaA, Ovd Silt Loam  
 Hydrologic Soil Group (HSG) C  
 6% LB, Lordstown, Shallow  
 Hydrologic Soil Group (HSG) D

Runoff Curve Number =  
 CN 70 - Woods, Good HSG C Soils  
 CN 74 - >75% Grass Cover, Good HSG C Soils  
 CN 73 - Brush, Good HSG D Soils  
 CN 77 - 2-AC Lds, 12% Impv, Cover, Good HSG C Soils  
 CN 65 - Woods, Good HSG B Soils  
 CN 98 - Paved Parking, Good HSG C Soils

Overland Stormwater Runoff - Longest Flowpath - 1,106 LF  
 Sheet Flow, Short Grass, 100 LF @ S = 2% avg. +/-  
 Shallow Conc. Flow, Grassed Waterway, 208 LF @ S = 2% avg. +/-  
 Shallow Conc. Flow, Wooded, 798 LF @ S = 4.3% avg. +/-



REFERENCE HYDROCAD (HYDRAULIC & HYDROLOGIC) MODELING RESULTS PRESENTED WITH THESE PLANS

**EAST LAKE COTTAGES LEISURE VILLAGE**  
 HYDRAULIC AND HYDROLOGIC WORKSHEET  
 EXISTING CONDITIONS  
 TOWN OF LANSING, LANSING, NEW YORK

|             |           |
|-------------|-----------|
| Drawn       | Checked   |
| Scale       | Scale     |
| Date        | Date      |
| Project No. | Sheet No. |
| SW-6        |           |



LAWRENCE FARRINGTON, P.E., L.R.  
 650 POWERS ROAD W.  
 KING FERRY, NEW YORK 13061  
 Phone: (517) 861-0040

| No. | Date | Description |
|-----|------|-------------|
| 1   |      |             |
| 2   |      |             |
| 3   |      |             |
| 4   |      |             |
| 5   |      |             |