



Dandy Pizza Cafe Deli

Convenience Store

Signage Proposal

7 Ridge Road, Lansing NY, 14882

TAX MAP PARCELS 31-6-9, 10, 11, 13 and 14



South Elevation

- 1) **Wall Mount - Main ID - Dandy Logo - Illuminated**
7'w X 7'h Circle = 38.5 sq/ft
- 2) **Wall Mount - PizzaCafeDeli - Illuminated**
9'6" w X 11" h = 10 sq/ft



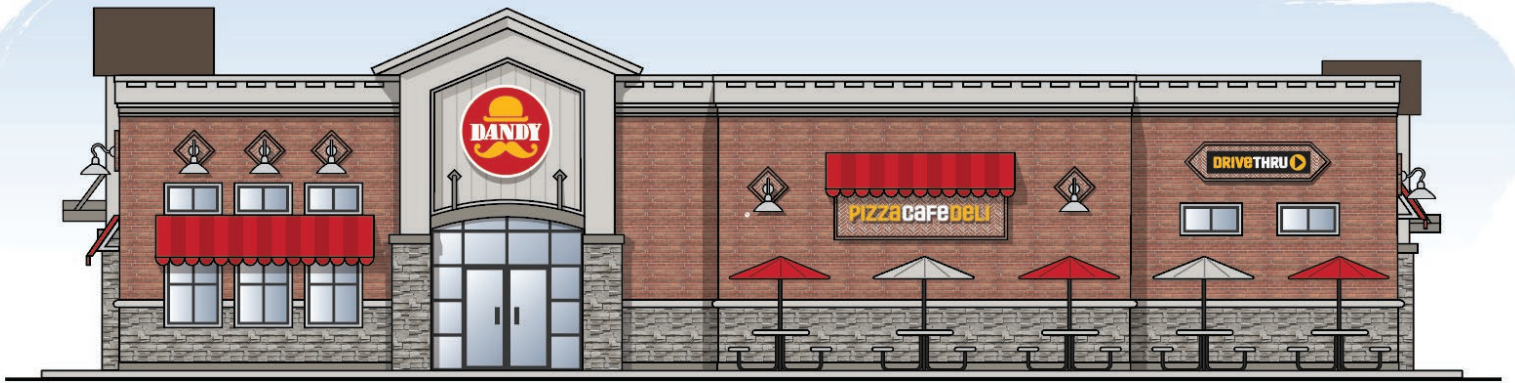
North Elevation

3) Wall Mount - Main ID - Dandy Logo - Illuminated

7'w X 7'h Circle= 38.5 sq/ft

4) Wall Mount - PizzaCafeDeli - Illuminated

9'6" w X 11" h = 10 sq/ft

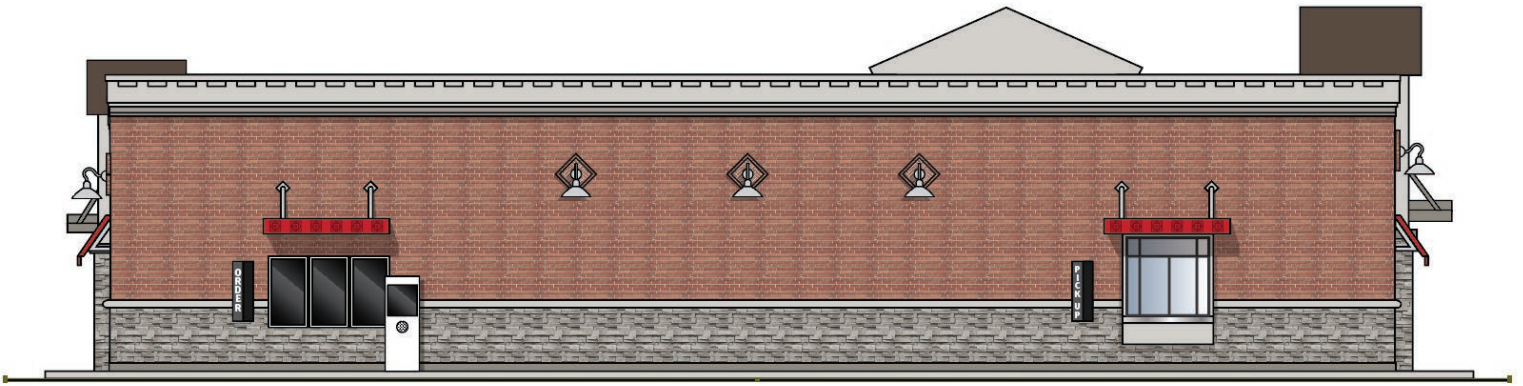


East Elevation

- 5) **Wall Mount - Main ID - Dandy Logo - Illuminated**
7'w X 7'h Circle= 38.5 sq/ft

- 6) **Wall Mount - PizzaCafeDeli - Illuminated**
9'6"w X 11"h = 10 sq/ft

- 7) **Wall Mount - Informational - Drive Thru - Illuminated**
7'w x 1'6"h = 10.5 sq/ft



West Elevation

8) Wall Mount - Informational - Order - Non Illuminated

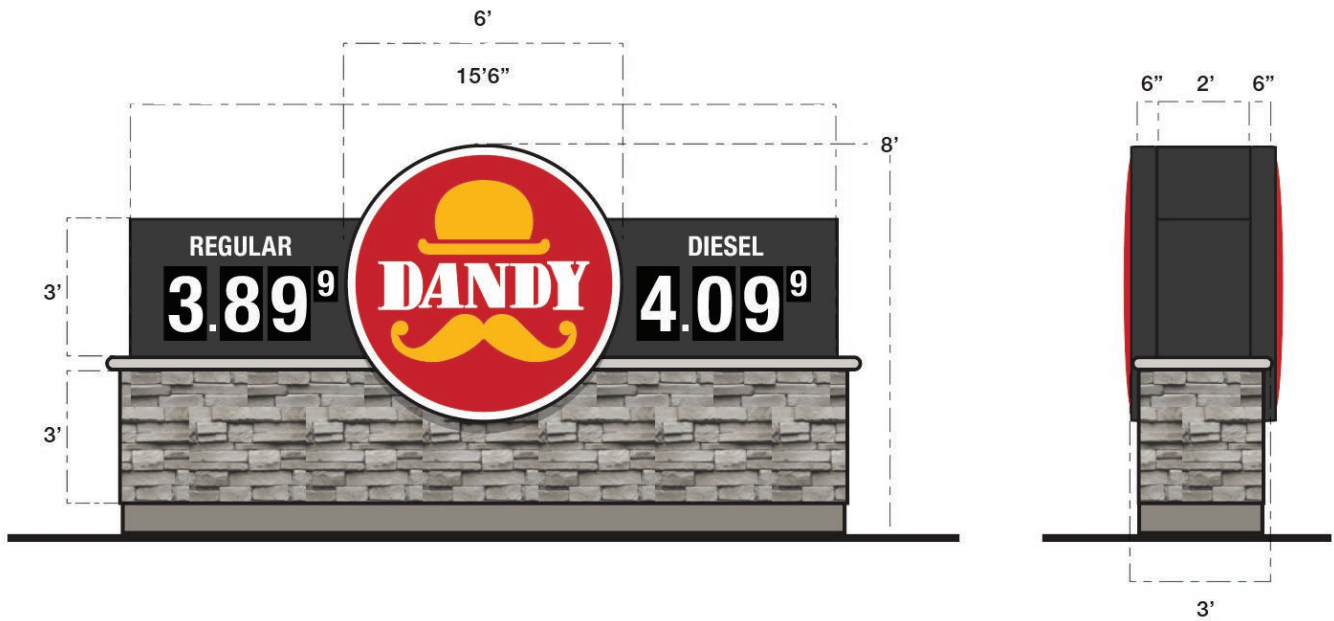
4' x 1'h = 4 sq/ft

9) Wall Mount - Informational - Pick Up - Non Illuminated

4'w X 1'h = 4 sq/ft

10) Wall Mount - Digital Drive Thru Menu - Illuminated

8'w x 4'h = 32 sq/ft



Main Entrances

11) Free Standing Monument - Illuminated - Double Sided

a) Dandy Logo: $6'w \times 6'h = 28.25 \text{ sq/ft}$

b) Pricer: $(15'6'' - 6') \times 3' = 28.5$



Fuel Dispensers

12) Fuel Dispenser - Double Sided

a) Top: Dandy text 20" w x 5" h = 1 sq/ft

b) Bottom: Dandy Logo 20" w x 17" h = 2.5 sq/ft



Total Aggregate: _____

| <u>Sign:</u> | <u>Square Foot:</u> |
|---|---------------------|
| 1) Wall Mount - Main ID - Dandy | 38.5 |
| 2) Wall Mount - PizzaCafeDeli | 10 |
| 3) Wall Mount - Main ID - Dandy | 38.5 |
| 4) Wall Mount - PizzaCafeDeli | 10 |
| 5) Wall Mount - Main ID - Dandy | 38.5 |
| 6) Wall Mount - PizzaCafeDeli | 10 |
| 7) Wall Mount - Drive Thru | 10.5 |
| 8) Wall Mount - Order | 4 |
| 9) Wall Mount - Pick Up | 4 |
| 10) Wall Mount - Drive Thru Menu Freestanding | 32 |
| 11) Monument (qty 2 - 56.75 ea.) Fuel | 113.5 |
| 12) Dispensers (qty 9 - 3.5ea) | 31.5 |
| <hr/> | |
| Total Square footage of site signage: | 341 |