



Town of Lansing

Parks, Recreation & Trails Master Plan

Town of Lansing Town Board
April 20, 2022, 6:30 pm Via Zoom



[AGENDA]



1

AGENDA

2

PROJECT AND
SCHEDULE
OVERVIEW

3

PARK CONCEPT
PLANS

4

DRAFT MASTER
PLAN OVERVIEW

5

NEXT STEPS



A photograph of a baseball field under a blue sky with scattered white clouds. The field is green with a brown dirt infield. In the background, there are trees and a chain-link fence. A large yellow text overlay is centered on the image, reading "PROJECT AND SCHEDULE OVERVIEW".

PROJECT AND SCHEDULE OVERVIEW

[PROJECT APPROACH]

- Develop a community-supported plan providing guidance for future development and redevelopment of Town parks, recreation and trails

RE-THINK

The physical space and programming opportunities



RE-CONNECT

Physically within the park; visually to the waterfront; and programmatically for the community

RE-FOCUS

Activities within each park to maximize the space and focus on the pedestrian realm



PROJECT TASKS

- **Task 1:** Review of Existing Data, Plans and Initiatives
- **Task 2:** Inventory of all existing facilities Town-wide
- **Task 3:** Parks, Recreation and Trails Committee Meetings
 - 8 meetings held
 - Monthly coordination calls with key staff
- **Task 4:** Manage Public Engagement
- **Task 5:** Analyze Needs and Trends
- **Task 6:** Public Workshop
- **Task 7:** Draft Parks, Recreation and Trails Master Plan
- **Task 8:** Capital Improvement Implementation Strategy

TOWN OF LANSING
Town of Lansing, New York
PARKS, RECREATION AND TRAILS MASTER PLAN

Home About Engagement Documents Lansing Parks & Concepts Contact

WELCOME!

Welcome to the Town of Lansing Parks, Recreation and Trails Master Plan project website! The Master Plan will create a roadmap to ensure an appropriate balance of facilities, amenities and programs throughout the Town and will be used as a resource for development of the Town's parks, trails and recreation system over the next five to twenty years.

The Master Plan is being developed by the Town of Lansing and guided by an Advisory Committee. The process is being facilitated by a consultant team led by MJ Engineering and Land Surveying and supported by PLACE Alliance.

Visit this page to stay up-to-date on the latest information and public engagement activities related to the Master Plan development. Use the links at the top of the page to find out more information about the project, upcoming engagement opportunities, meeting materials and to share input.

CONTACT

Share your ideas in the comment box or provide your email to get updates on upcoming public engagement opportunities!

Lansing Parks and Recreation Department
29 Auburn Road, Lansing NY 14882

Tel: 607-533-7388
Fax: 607-533-3507

www.LansingRec.com

Name

Email

Add a message

[PUBLIC ENGAGEMENT]

- Online Community Survey
 - October 2020 – December 2020
 - 445 responses
- Key stakeholder interviews
- Public workshops
 - Virtual Workshop #1 – February 2021
 - Virtual Workshop #2 – June 2021
- Project website
- Pop-up Table – June 2021

The slide features a background image of a lake and a blue sky. The text on the slide reads: "Getting to know you..." and "Participant Po...". An overlay window titled "Polls" shows "Sharing Poll Results" for a question: "1. Select the Town parks you have visited in the last year. (Multiple choice)".

Park Name	Count	Percentage
Myers Park	29/30	97%
Ludlowville Park	23/30	77%
Salt Point	27/30	90%
Town Barn Field	9/30	30%
Lansing Center Trail	23/30	77%
Town Ballfields	10/30	33%

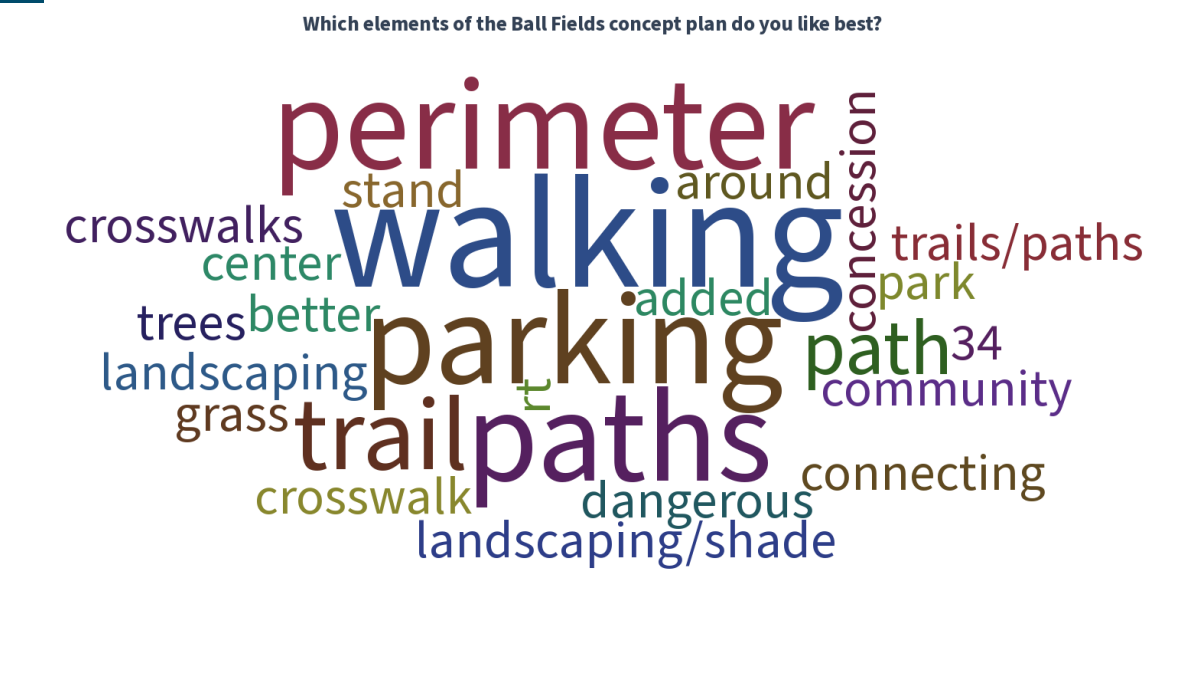
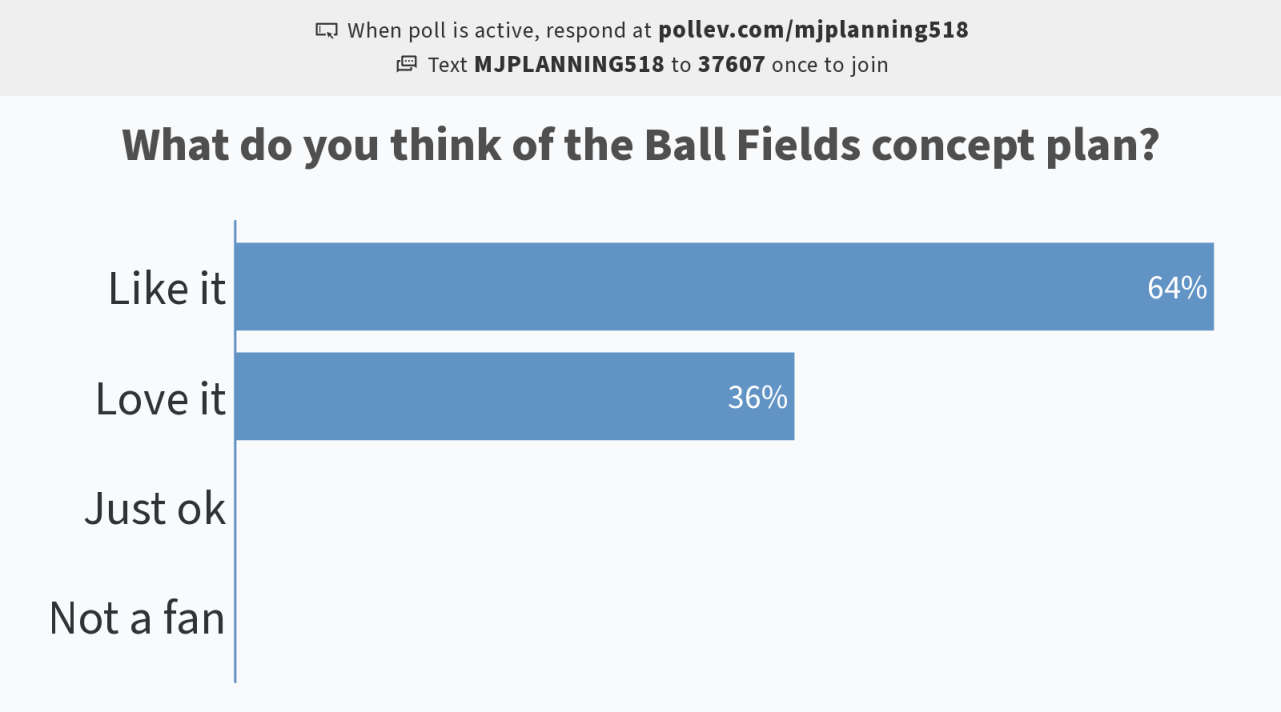
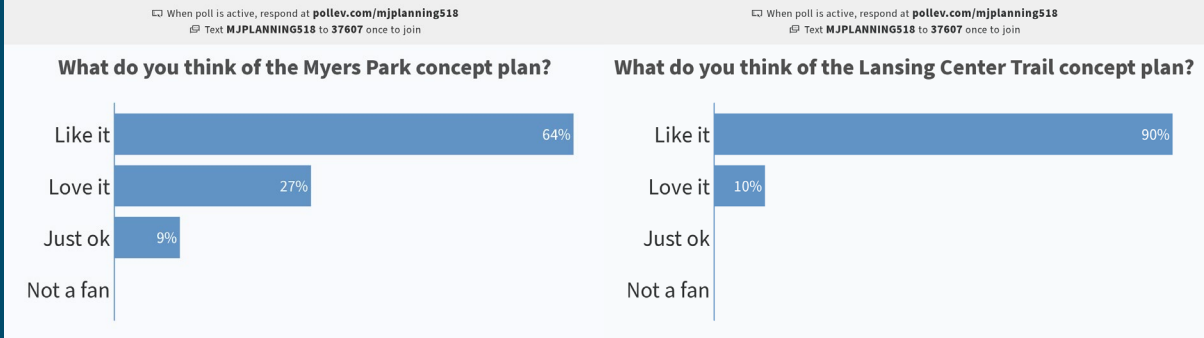
Buttons at the bottom of the poll window: "Stop Share Results" and "Re-launch Polling".

A screenshot of a Zoom meeting grid showing 20 participants in a 4x5 layout. The participants are identified by their names: Sarah Starke (M), Andrew Gilchrist (M), Patrick Tyrrell, Ian Law, Josiah Simpson, PLACE Alliance, AJLH (M), C.J. Randall, Lu Davis, Deb Trumbull, JACK TOLUHO, Donna Scott, Benenati, Dale Baker, Maureen Copen, Lynn Green, Bronwyn Losey, Isabelle Schweit..., Diane Beckwith, Theresa Butler, Lauren Chambliss, Roger Hopkins, Peggy Coleman..., Patrick Tyrrell, Isabelle Schweit..., Steven Schapiro, and Jack Beece.

[PUBLIC ENGAGEMENT]

Virtual Workshop #2 – June 2021

- Shared the concepts with the public and gathered initial feedback!

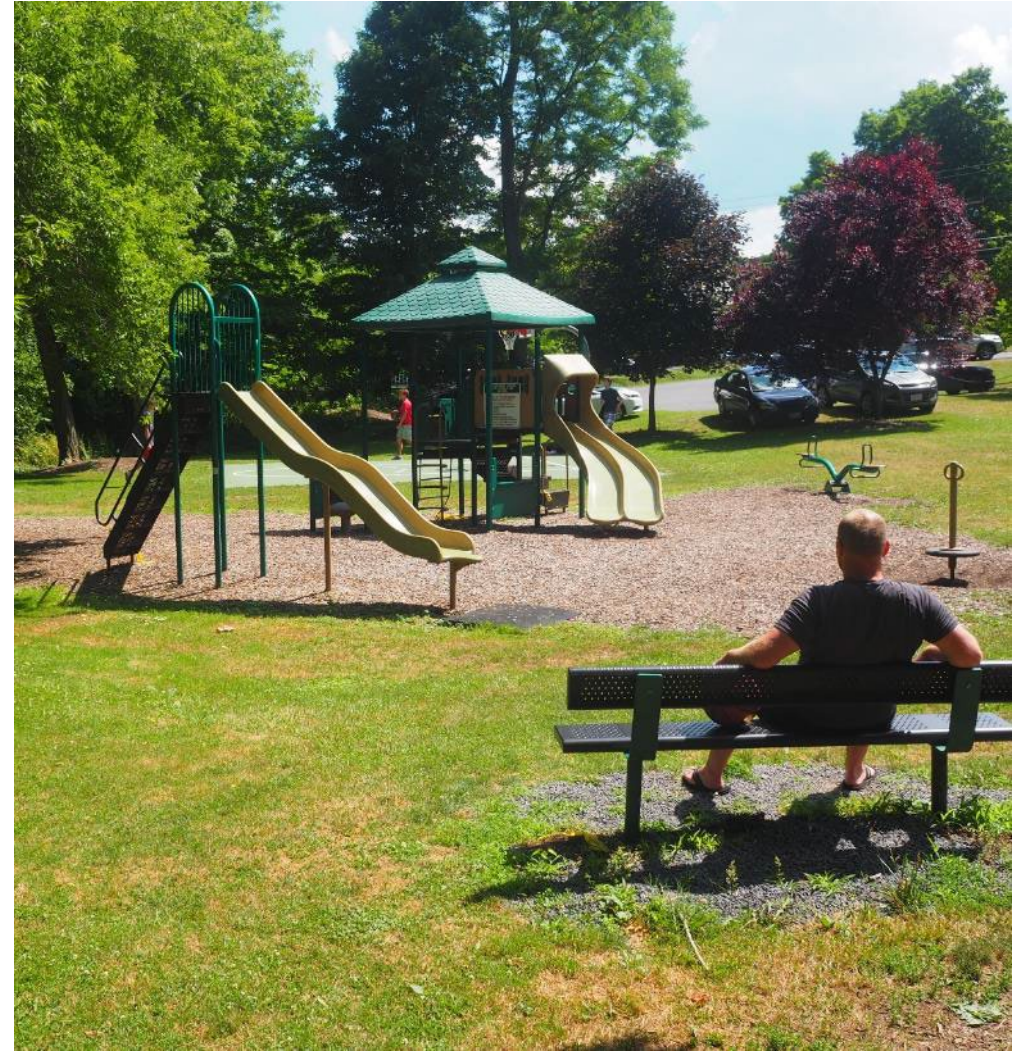


A scenic view of a lake with a park in the background. The text "PARK CONCEPT PLANS" is overlaid in large yellow letters. The background shows a calm lake with a person in a pink kayak in the center. In the distance, there are trees, a parking lot with cars, and a building. The sky is blue with some clouds. The text is in a bold, sans-serif font, with "PARK CONCEPT" on the top line and "PLANS" on the bottom line.

PARK CONCEPT PLANS

[PARK CONCEPT PLANS]

- Ball Fields
- Ludlowville Park
- Myers Park
- Salt Point
- Lansing Center Trail
- Barn Fields



[PARK CONCEPT PLANS]

- Key Design Principles
- Existing Site Info
- Draft Concept Plan
- Interactive Participant Polls

RE-THINK

The physical space and programming opportunities



RE-CONNECT

Physically within the park; visually to the waterfront; and programmatically for the community

RE-FOCUS

Activities within each park to maximize the space and focus on the pedestrian realm



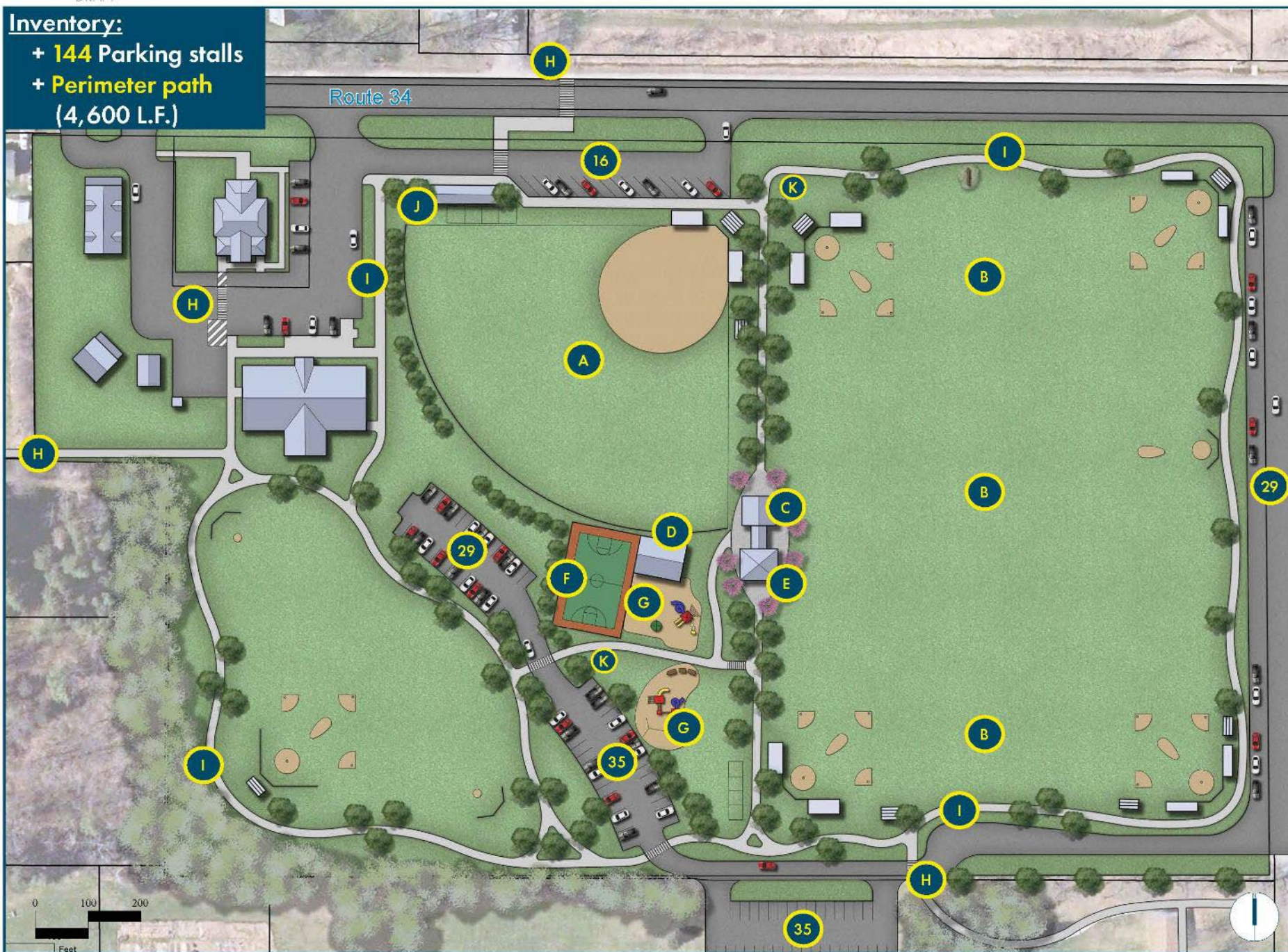
[BALL FIELDS]

- **Design Principles**
 - Parking
 - Pedestrian circulation
 - Connections



Inventory:

- + 144 Parking stalls
- + Perimeter path (4,600 L.F.)



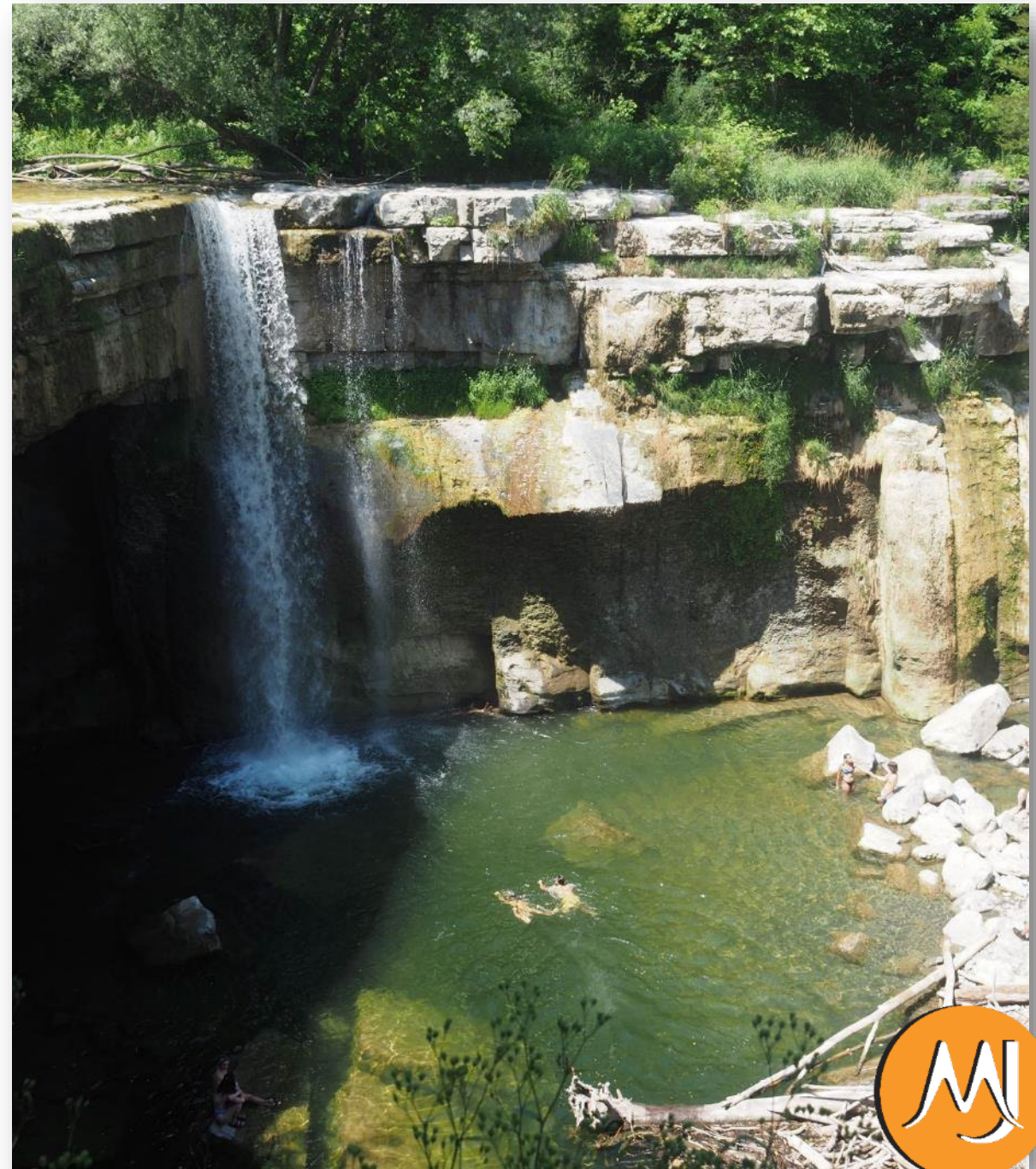
Town Ball Fields

Legend

- A** Adult Softball Field
- B** Sports Fields (little league, soccer, football)
- C** Bathrooms
- D** Existing Pavilion
- E** Concession Stand
- F** Basketball Court
- G** Play Structures
- H** New Pedestrian Connections
- I** Perimeter Path
- J** BBQ Station
- K** Bike Racks

[LUDLOWVILLE PARK]

- **Design Principles**
 - Parking
 - Restrooms
 - Safer access to falls
 - Maintain quiet character and scale of park





Ludlowville Park

Legend

- (A) Bathroom
- (B) Expanded parking area
- (C) Pedestrian path
- (D) Accessible overlook
- (E) Formalized trail to waterfall
- (F) Explore opportunities to utilize north part of property
- (G) Explore opportunities for neighborhood connections

[MYERS PARK]

- **Design Principles**
 - Parking (car & trailer)
 - Pedestrian circulation
 - Enhance views / access to lake
 - Restrooms
 - Create more defined spaces



Myers Park

Legend

- (A) RV Campsites
- (B) RV Bathrooms with Showers
- (C) New Bathrooms
- (D) Existing Pavilion
- (E) Moved Pavilion
- (F) Gazebo
- (G) Expanded Beach
- (H) Basketball Court
- (I) Volleyball Court
- (J) Kayak Facility
- (K) Canoe/Kayak Drop Off
- (L) Canoe/Kayak Launch
- (M) High Tensile Structure
- (N) Riverbank Plantings
- (O) Lakefront-Marina Promenade
- (P) Open Lawn
- (Q) Event Lawn
- (R) Boat Launch
- (S) Playground
- (T) Campsites
- (U) Bike Racks

- Inventory:**
- + 193 Parking stalls
 - + 75 Boat trailer stalls
 - + 19 RV campsites
 - + 3,630 L.F. of lake front without cars
 - + 5 Campsites



High Tensile Structures (Myers Park, 'M')

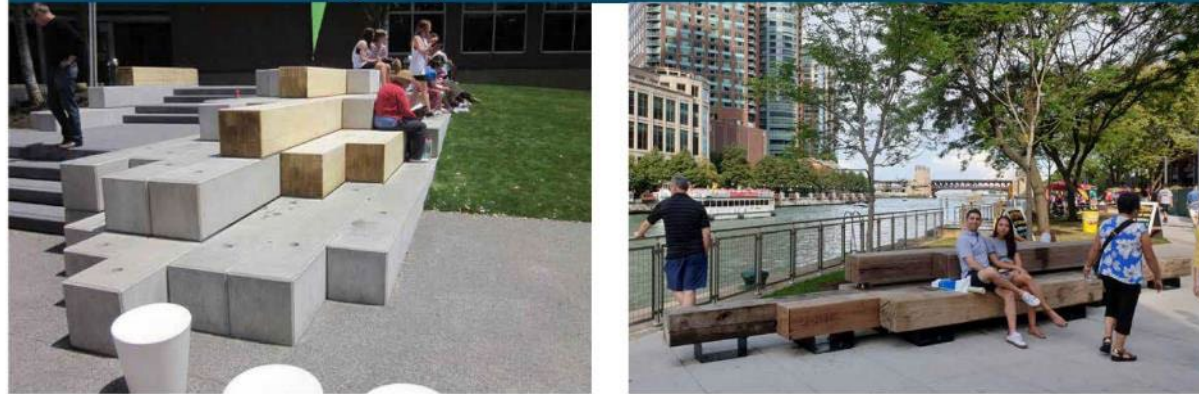


DRAFT

Proposed Park Amenities

Conceptual Precedents

Creative Seating (Myers Park, Lakefront Promenade 'O')



Trellis Swings (Myers Park, Lakefront Promenade 'O')

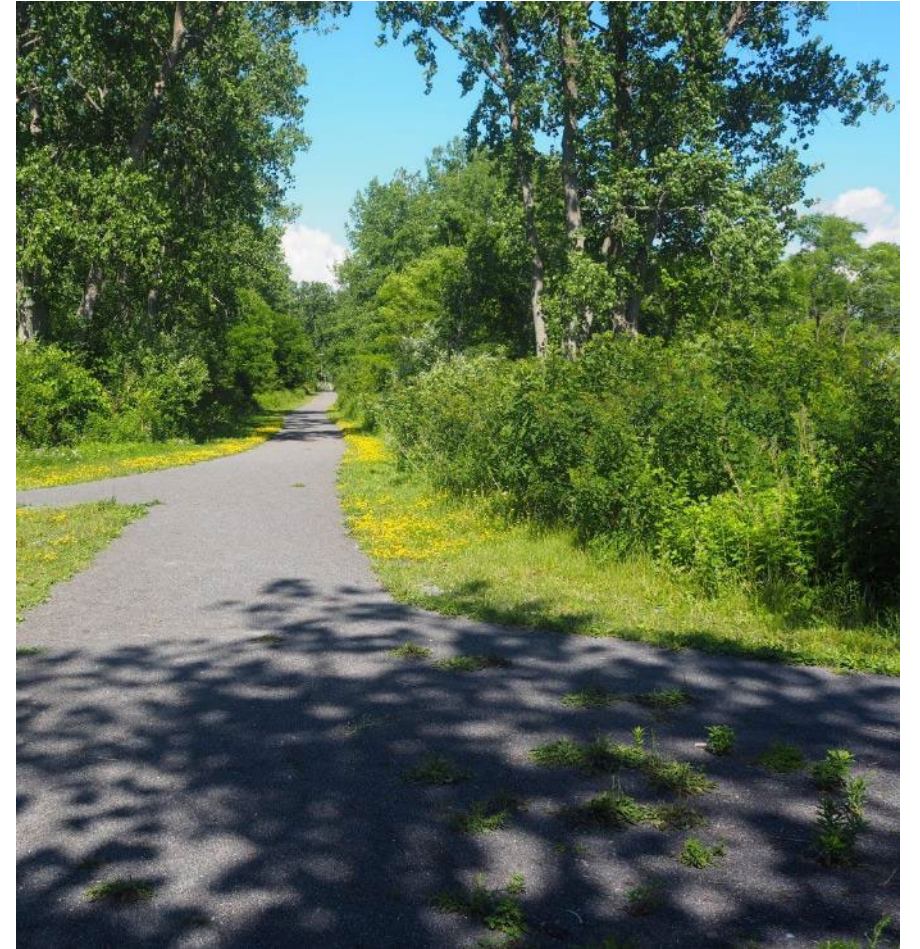


Pavilion Carts (Myers Park)



[SALT POINT]

- **Design Principles**
 - Maintain 'preserve' character
 - Improve lake access & viewing points
 - Define parking



Salt Point Natural Area

Inventory:
 + 39 Parking stalls
 + 13 Creek access parking stalls
 + 2,600 L.F. Stone dust walking trails

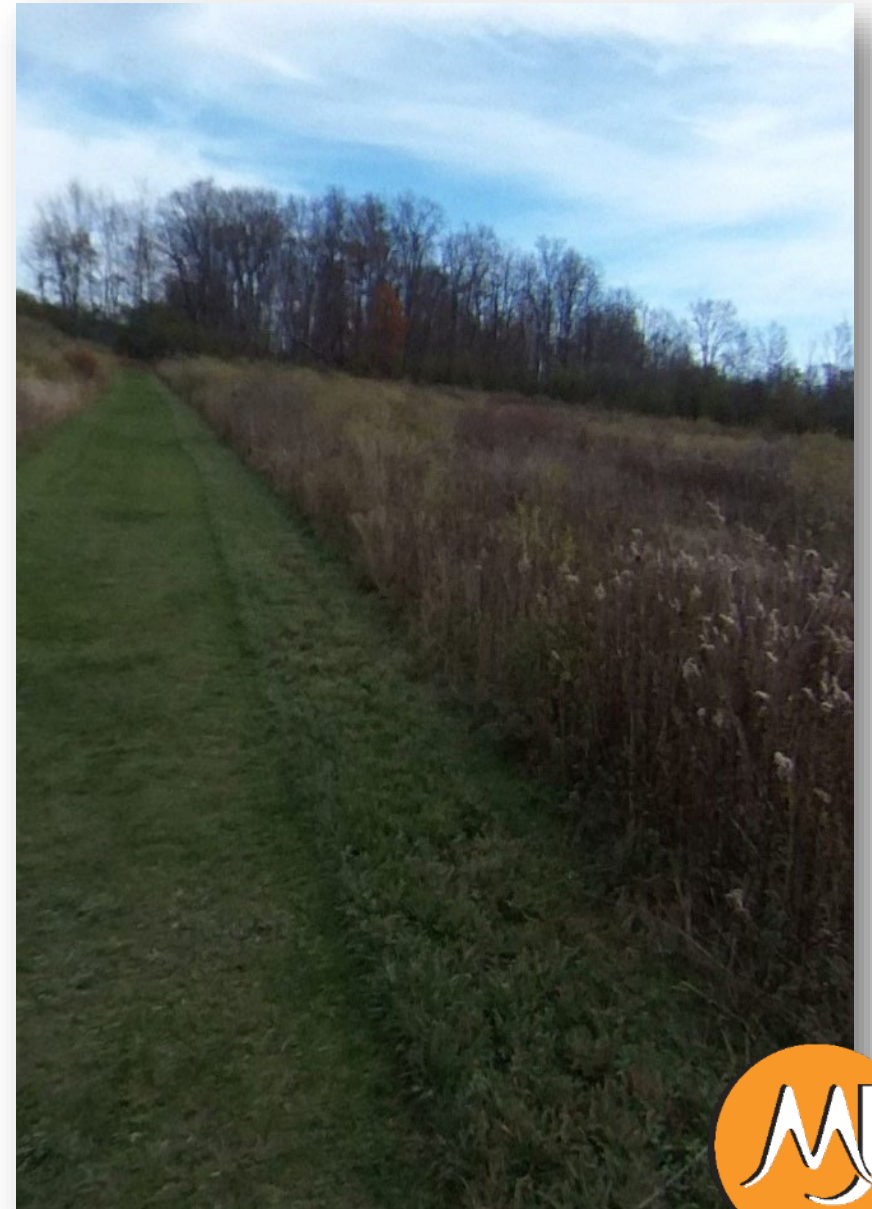


Legend

- (A)** 2 Port-a-John bathroom shelters
- (B)** Information Kiosk
- (C)** Improved Lake Access
- (D)** Improved Lake Viewing/Swimming
- (E)** Improved Creek Viewing/Access
- (F)** Bike Racks

[LANSING CENTER TRAIL]

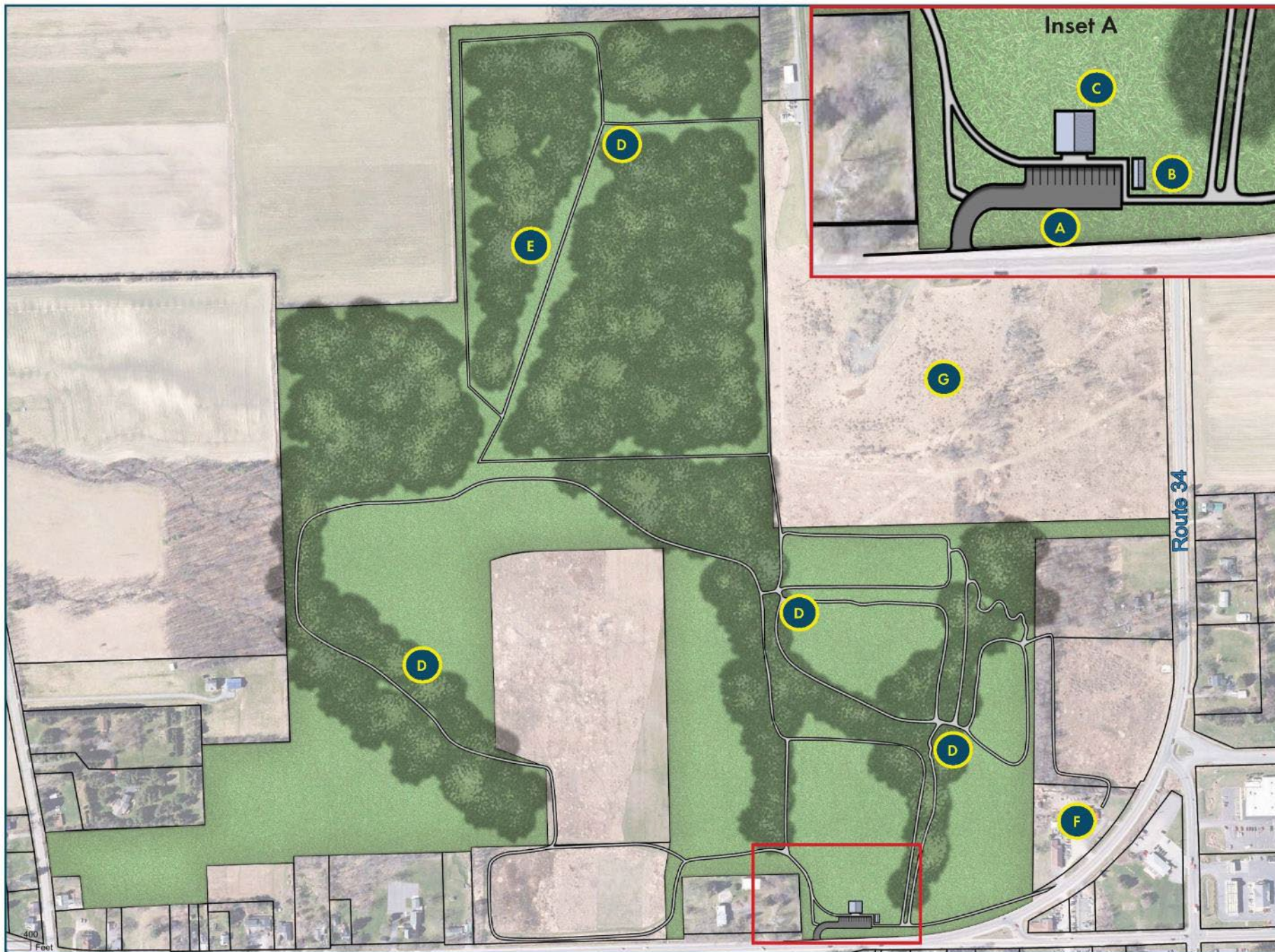
- **Design Principles**
 - Parking
 - Restrooms
 - Interpretive signage



Lansing Center Trail

Legend

- (A)** Formalized parking area
- (B)** Kiosk
- (C)** Bathroom
- (D)** Interpretive signage
- (E)** Address drainage for wet trails
- (F)** Explore opportunities for additional parking
- (G)** Explore opportunities for trail expansion



[BARN FIELDS]

- **Design Principles**
 - Parking
 - Restrooms
 - Pedestrian safety
 - Opportunities for use as flex space
 - Protective fencing
 - Additional recreation amenities



Inventory:
+ 42 Parking stalls



Town Barn Field

Legend

- (A) Formalized parking area
- (B) Crosswalk
- (C) Pedestrian path
- (D) Bathroom
- (E) Playground
- (F) Picnic area
- (G) Pavilion
- (H) Protective fence
- (I) Vegetative buffer
- (J) Address drainage and regrade field

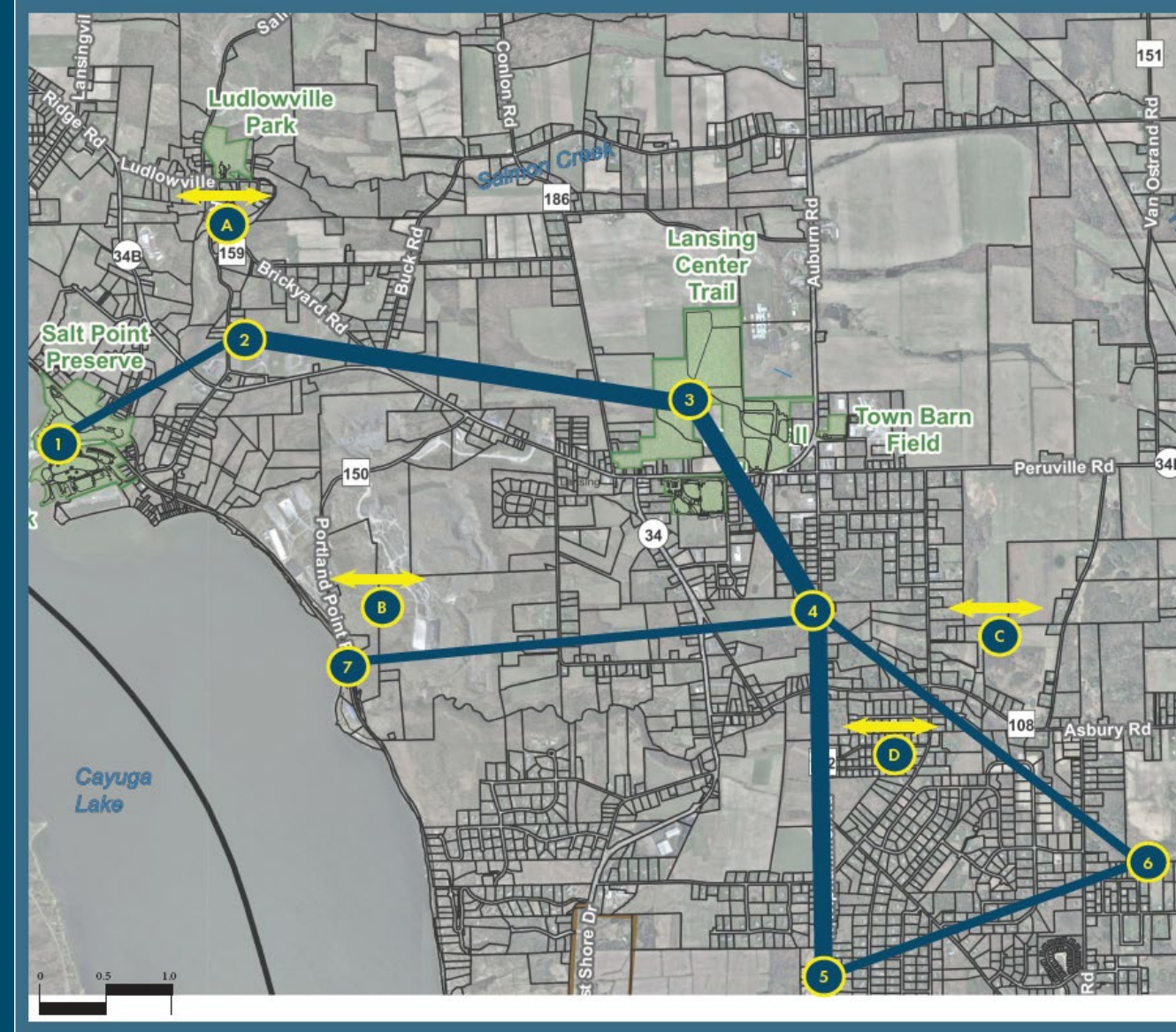
LANSING CONNECTED

Major Nodes:

1. Myers Park and Salt Point Preserve
2. Lansing Schools
3. Town Center
4. Residential Neighborhoods
5. Village of Lansing
6. Lake View, Village Solars and Whispering Pines neighborhoods

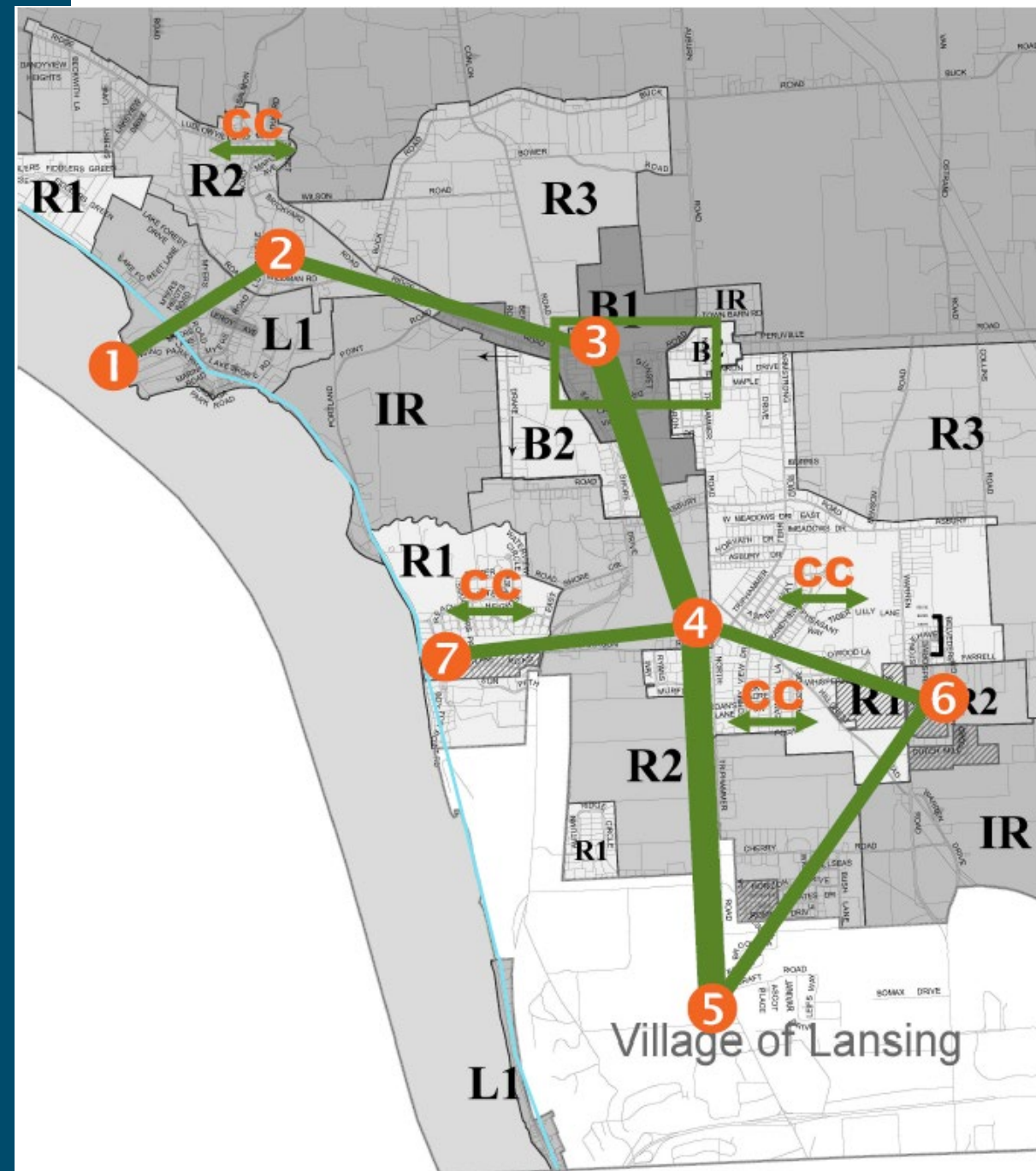
Community Connections A-D:

These notations identify areas where short spurs are needed to fully connect adjacent neighborhoods and to provide access to the Town's central and spur trails



LANSING CONNECTED

- Concept plan being refined
- Identification of nodes
- Additional input from Committee



A photograph of a baseball field under a blue sky with scattered white clouds. The field is green with a brown dirt infield. In the background, there are trees, a fence, and a building. A large yellow text overlay is centered on the image.

DRAFT MASTER PLAN OVERVIEW

[DRAFT MASTER PLAN]

- Community consensus driven effort
- Creates a roadmap to ensure an appropriate balance of facilities, amenities and programs throughout Town
- Used as a resource for development of the Town's parks, trails and recreation system over the next five to twenty years

The image shows the "TABLE OF CONTENTS" page. The background is a photograph of a waterfall cascading over a stone wall. The text is white and arranged in two rows. Each item is numbered and underlined with a yellow line. The items are: 01 EXECUTIVE SUMMARY, 02 INTRODUCTION, 03 BENEFITS & NEED, 04 REGIONAL CONTEXT, 05 LANSING PARK SYSTEM TODAY, and 06 LANSING PARK SYSTEM TOMORROW.

01 EXECUTIVE SUMMARY	02 INTRODUCTION	03 BENEFITS & NEED	04 REGIONAL CONTEXT
05 LANSING PARK SYSTEM TODAY	06 LANSING PARK SYSTEM TOMORROW		

[DRAFT MASTER PLAN]

- **SECTION 01:** EXECUTIVE SUMMARY
- **SECTION 02:** INTRODUCTION
- **SECTION 03:** BENEFITS AND NEED FOR PARKS, RECREATION AND TRAILS
- **SECTION 04:** REGIONAL CONTEXT
- **SECTION 05:** LANSING PARKS, RECREATION AND TRAIL SYSTEM TODAY
- **SECTION 06:** LANSING PARK SYSTEM TOMORROW

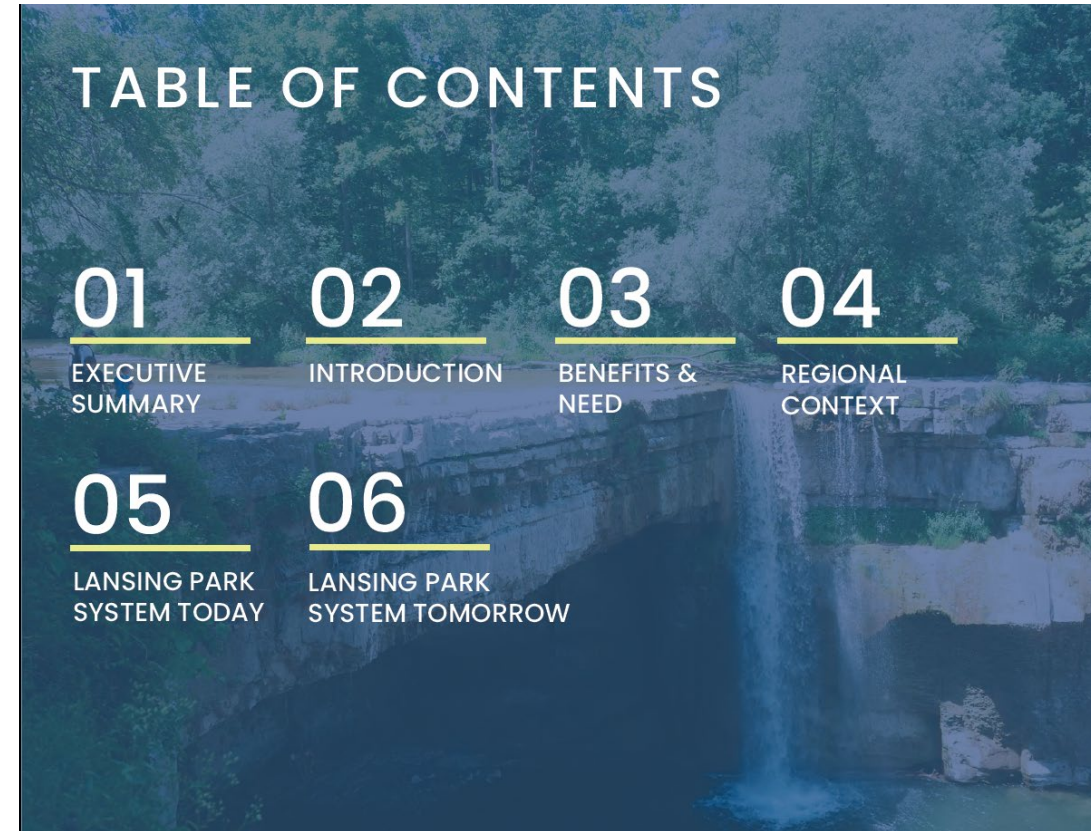


TABLE OF CONTENTS

01 EXECUTIVE SUMMARY	02 INTRODUCTION	03 BENEFITS & NEED	04 REGIONAL CONTEXT
05 LANSING PARK SYSTEM TODAY	06 LANSING PARK SYSTEM TOMORROW		



**COMMENTS
QUESTIONS?**