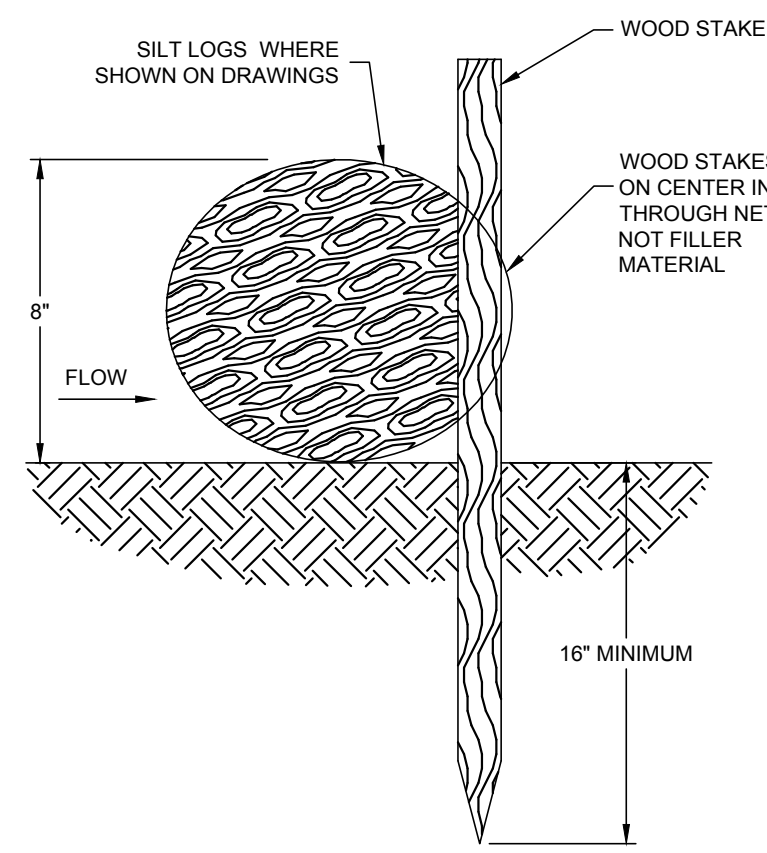
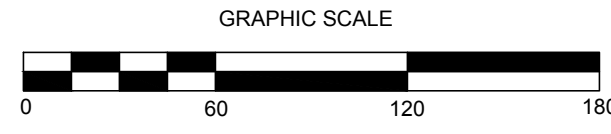
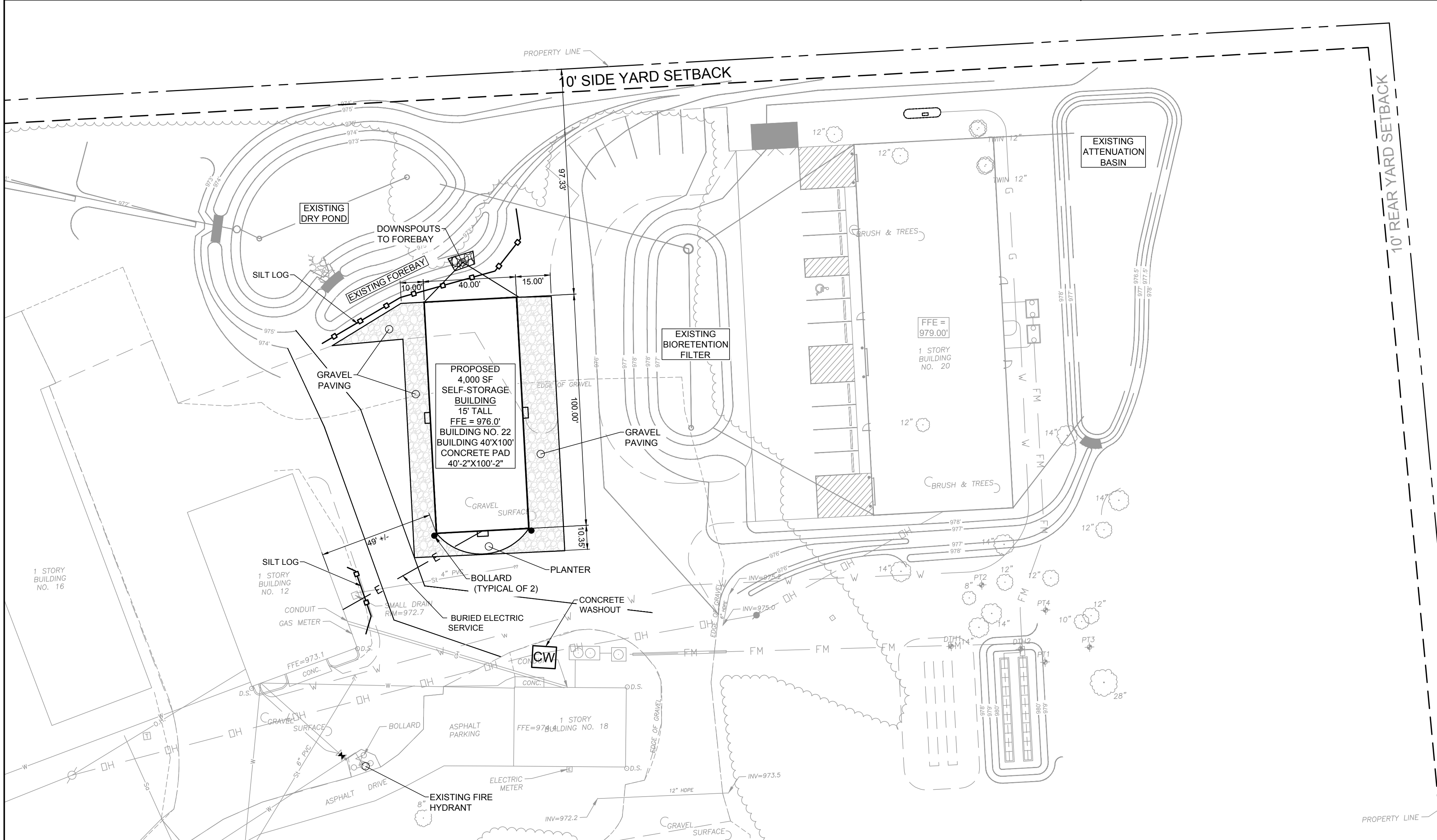


**SITE PLAN**

SCALE: 1"=60'

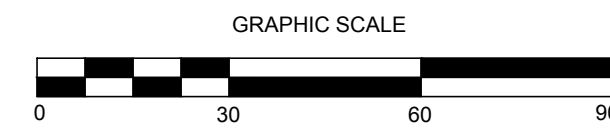


**SILT LOG - NOT TO SCALE**



**ENLARGED SITE PLAN**

SCALE: 1"=30'



**EROSION AND SEDIMENT CONTROL NOTES:**

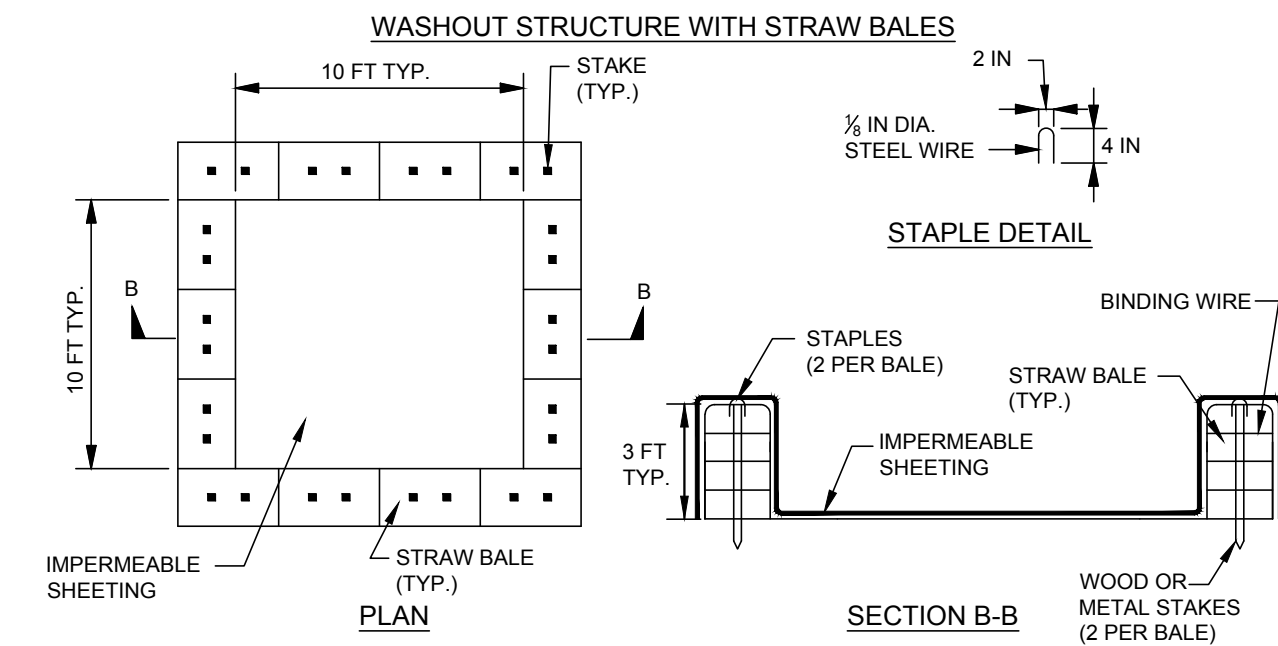
1. PRIOR TO THE START OF CONSTRUCTION AND UNTIL ALL DISTURBED AREAS ARE STABILIZED, ALL EROSION AND SEDIMENT CONTROL MEASURES AS SHOWN ON THE SITE PLAN AND AS OTHERWISE REQUIRED, SHALL BE INSTALLED AND MAINTAINED BY THE CONTRACTOR, AND SHALL BE IN ACCORDANCE WITH THE LATEST EDITION OF THE NEW YORK STATE GUIDELINES FOR URBAN EROSION AND SEDIMENTATION CONTROL.
2. DISTURBED AREAS SHALL BE SEEDED AND MULCHED WITH CLEAN STRAW AS OUTLINED IN THE NEW YORK STATE GUIDELINES FOR URBAN EROSION AND SEDIMENTATION CONTROL.
3. BARE SOILS SHALL BE MULCHED WITH HAY AT A RATE OF TWO TONS PER ACRE WITHIN 14 DAYS OF EXPOSURE. IF CONSTRUCTION ON AN AREA IS SUSPENDED, THE AREA SHALL BE SEEDED IMMEDIATELY.
4. THE CONTRACTOR SHALL BE RESPONSIBLE FOR KEEPING THE STREET PAVEMENT AREAS CLEAN OF DIRT AND DEBRIS.
5. AS SEDIMENT ACCUMULATES TO 1/2 THE DEPTH OF THE SILT LOGS, SEDIMENT SHALL BE REMOVED AS OUTLINED IN THE NYS GUIDELINES FOR URBAN EROSION AND SEDIMENTATION CONTROL.
6. THE CONTRACTOR & ITS SUBCONTRACTORS ARE RESPONSIBLE FOR MEANS & METHODS OF EROSION CONTROL FACILITIES DURING CONSTRUCTION. IT SHOULD BE NOTED THAT FACILITIES ON THIS DRAWING ARE CONSIDERED MINIMUM & ADDITIONAL EROSION CONTROL MEASURES MAY BE REQUIRED AS CONSTRUCTION PROGRESSES. THE CONTRACTOR & ITS SUBCONTRACTORS ARE RESPONSIBLE FOR ANY ADDITIONAL MEASURES DEEMED NECESSARY BY THE ENGINEER, TOWN, OR NYSDEC.

**SEQUENCE OF CONSTRUCTION:**

1. INSTALL SILT LOGS AS SHOWN ON PLAN PRIOR TO BEGINNING EARTHWORK OPERATIONS.
2. STRIP AND STOCKPILE TOPSOIL.
3. SURROUND ALL STOCKPILE AREAS WITH SILT LOGS.
4. INSTALL CONCRETE WASHOUT.
5. COMPLETE SITE AND UTILITY IMPROVEMENTS.
6. FINE GRADE, SEED, AND MULCH ALL DISTURBED LAWN AREAS WITHIN FOURTEEN (14) DAYS OF DISTURBANCE.
7. REMOVE TEMPORARY SILT LOGS ONLY AFTER SITE IS COMPLETELY STABILIZED AND ALL DISTURBED LAWN AREAS HAVE ACHIEVED 80% VEGETATIVE GROWTH.

7. PROVIDE EROSION CONTROL MEASURES AS NOTED ON THE PLANS AND AS OTHERWISE REQUIRED TO PREVENT EROSION AND SEDIMENTATION ONTO ADJOINING PROPERTIES, STREETS, WATERWAYS, AND ON SITE IMPROVEMENTS BEYOND THE LIMITS OF WORK. COMPLY WITH THE LATEST ISSUE OF "NEW YORK GUIDELINES FOR URBAN EROSION AND SEDIMENTATION CONTROL" AND THE NYSDEC'S "REDUCING THE IMPACTS OF STORMWATER RUNOFF FROM NEW DEVELOPMENT".
8. MAINTENANCE - THE CONTRACTOR SHALL INSPECT ALL EROSION CONTROLS ON A WEEKLY BASIS AND AFTER ALL STORMS (2" RAINFALL OR GREATER) INCLUDING BUT NOT LIMITED TO THE FOLLOWING: REPLACING DAMAGED OR SILED IN SILT LOGS AND STABILIZING ERODED OR WASHED OUT SLOPED AREAS.
9. CONTRACTOR SHALL MAINTAIN EROSION CONTROL MEASURES UNTIL CONSTRUCTION IS COMPLETE. LAWNS HAVE BECOME ESTABLISHED TO 80% VEGETATIVE COVER AND ALL SOURCES OF EROSION HAVE BEEN PERMANENTLY STABILIZED.
10. CONTRACTOR SHALL PROVIDE DUST CONTROL IN ACCORDANCE WITH THE LATEST ISSUE OF "NEW YORK GUIDELINES FOR URBAN EROSION AND SEDIMENTATION CONTROL". THE CONTRACTOR & ITS SUBCONTRACTORS ARE RESPONSIBLE FOR MEANS & METHODS OF EROSION CONTROL FACILITIES DURING CONSTRUCTION. IT SHOULD BE NOTED THAT FACILITIES ON THIS DRAWING ARE CONSIDERED MINIMUM & ADDITIONAL EROSION CONTROL MEASURES MAY BE REQUIRED AS CONSTRUCTION PROGRESSES. THE CONTRACTOR & ITS SUBCONTRACTORS ARE RESPONSIBLE FOR ANY ADDITIONAL MEASURES DEEMED NECESSARY BY THE ENGINEER, TOWN, OR NYSDEC.

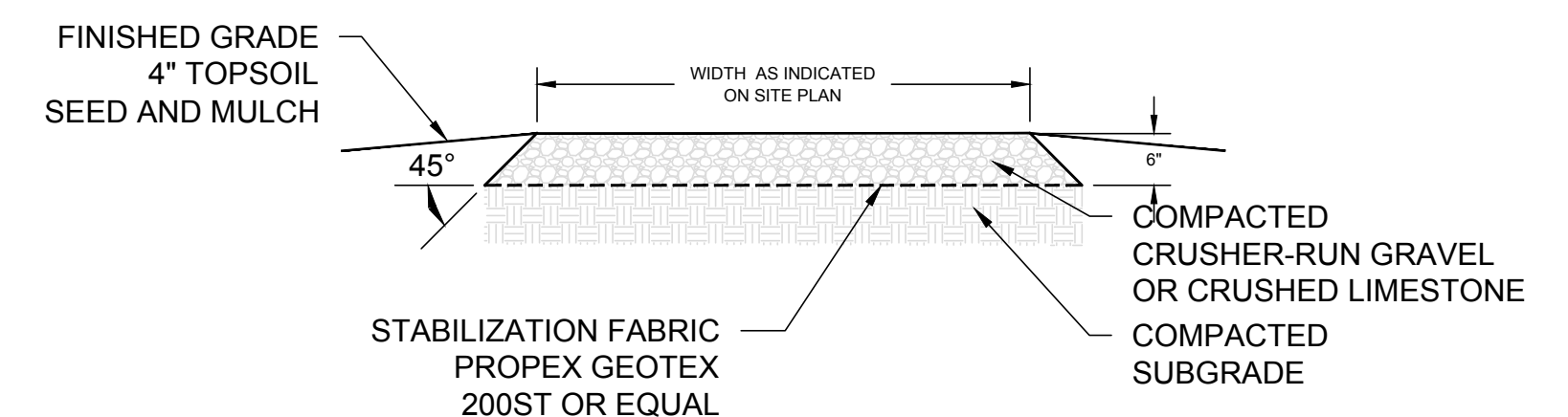
**EROSION & SEDIMENT CONTROL NOTES - NOT TO SCALE**



**CONSTRUCTION NOTES**

1. LOCATE WASHOUT STRUCTURE A MINIMUM OF 100 FEET AWAY FROM OPEN CHANNELS, STORM DRAIN INLETS, SENSITIVE AREAS, WETLANDS, BUFFERS AND WATER COURSES AND AWAY FROM CONSTRUCTION TRAFFIC.
2. SIZE WASHOUT STRUCTURE FOR VOLUMES NECESSARY TO CONTAIN WASH WATER, SOLIDS AND RAINFALL AND MAINTAIN AT LEAST 4 INCHES OF FREEBOARD. TYPICAL DIMENSIONS ARE 10 FEET X 10 FEET X 3 FEET DEEP.
3. PREPARE SOIL BASE FREE OF ROCKS OR OTHER DEBRIS THAT MAY CAUSE TEARS OR HOLES IN THE LINER. FOR LINER, USE 10 MIL OR THICKER UV RESISTANT, IMPERMEABLE SHEETING, FREE OF HOLES AND TEARS OR OTHER DEFECTS THAT COMPROMISE IMPERMEABILITY OF THE MATERIAL.
4. PROVIDE A SIGN FOR THE WASHOUT IN CLOSE PROXIMITY TO THE FACILITY.
5. KEEP CONCRETE WASHOUT STRUCTURE WATER TIGHT. REPLACE IMPERMEABLE LINER IF DAMAGED (E.G., RIPPED OR PUNCTURED). EMPTY OR REPLACE WASHOUT STRUCTURE THAT IS 75 PERCENT FULL, AND DISPOSE OF ACCUMULATED MATERIAL PROPERLY. DO NOT REUSE PLASTIC LINER. WET VACUUM STORES THAT HAVE NOT EVAPORATED AND DISPOSE OF IN AN APPROVED MANNER. PRIOR TO FORECASTED RAINSTORMS, REMOVE LIQUIDS OR COVER STRUCTURE TO PREVENT OVERFLOWS. REMOVE HARDENED SOLIDS, WHOLE OR BROKEN UP, FOR DISPOSAL OR RECYCLING. MAINTAIN RUNOFF DIVERSION AROUND EXCAVATED WASHOUT STRUCTURE UNTIL STRUCTURE IS REMOVED.
6. DURABLE PORTABLE CONCRETE WASHOUT BASINS OR TUBS MAY BE USED WITH THE APPROVAL OF THE EROSION CONTROL INSPECTOR.

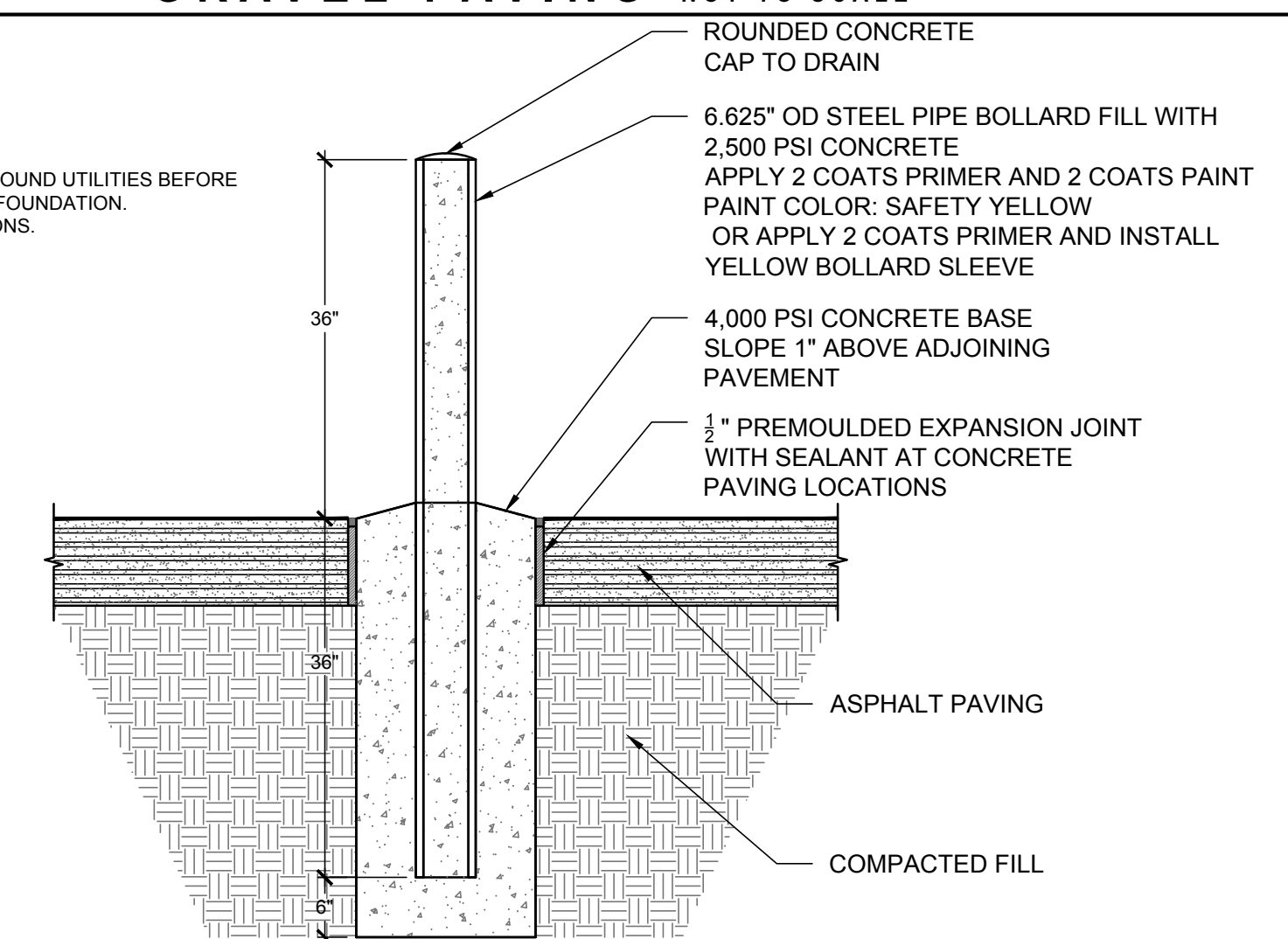
**CONCRETE WASHOUT - NOT TO SCALE**



**GRAVEL PAVING - NOT TO SCALE**

**NOTES:**

1. VERIFY LOCATION OF UNDERGROUND UTILITIES BEFORE DRILLING OR EXCAVATING FOR FOUNDATION.
2. SEE LAYOUT PLAN FOR LOCATIONS.



**BOLLARD - NOT TO SCALE**



**WARNING:**

It is a violation of Section 2209, Subdivision 2 of the New York State Education Law for any person, unless he or she is working under the direction of a licensed engineer, to alter an item in any way. If an item bearing the seal of an engineer is altered, the altering engineer shall affix to the item his or her seal and the notation "altered by" followed by his or her signature, the date of such alteration, and a specific description of the alteration.

**NEW SELF-STORAGE BUILDING**  
**VERIZON LANE**  
**22 VERIZON LANE LANSING NY, 14882**

REVISION 6	
REVISION 5	
REVISION 4	
REVISION 3	
REVISION 2	
REVISION 1	

PROJECT NO.	23-14
DATE	10/02/2024
SCALE	AS NOTED

DRAWING TITLE  
**MODIFIED SITE PLAN & DETAILS**

DRAWING NUMBER  
**C-100**