

This drawing is the property of Childrey Robinson Associates. This drawing is not to be copied or used in whole or in part, but may be used on any other project and must be referred to Childrey Robinson Associates upon request. Copyright 2006, Childrey Robinson Associates. Written permission is required for any reproduction.

DATE

REV. DESCRIPTION

REVISIONS

DATE

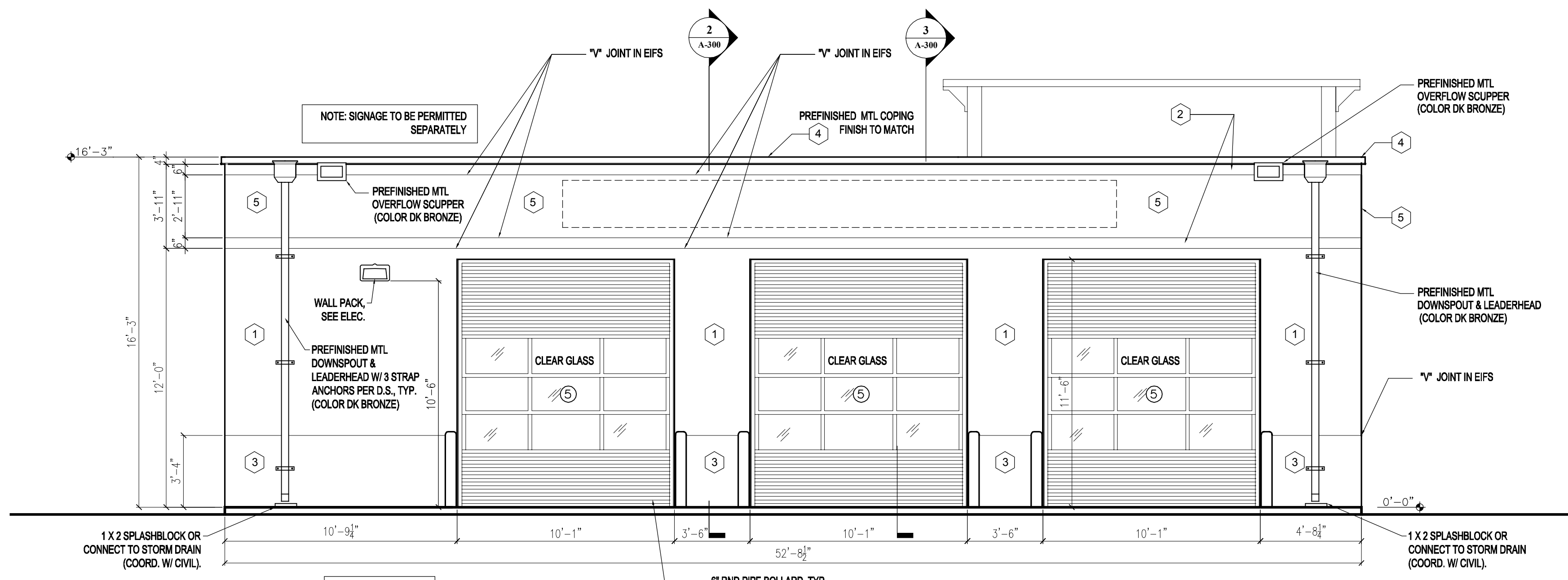
04-12-2020

SHEET NAME

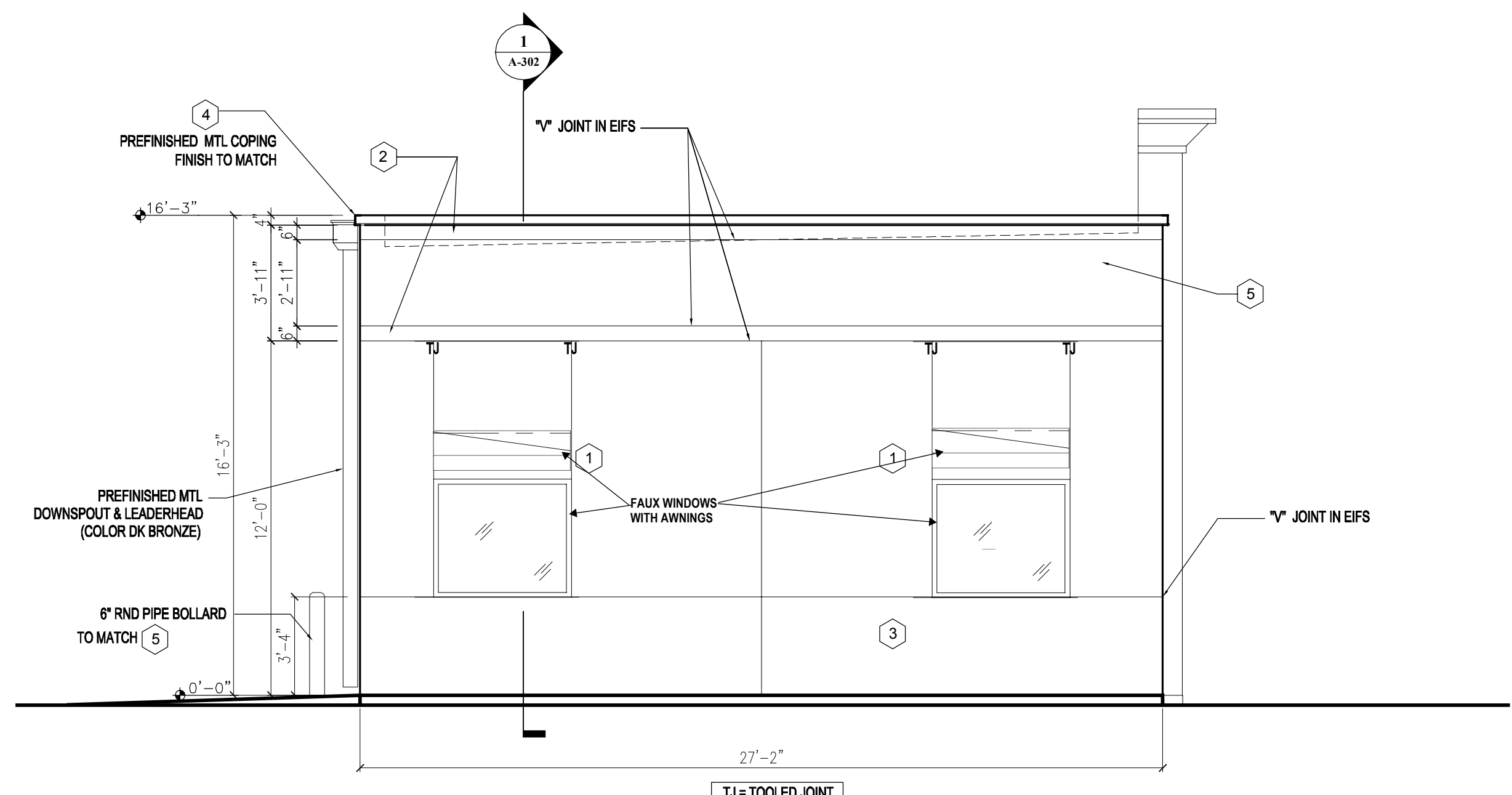
ELEVATIONS

SHEET NUMBER

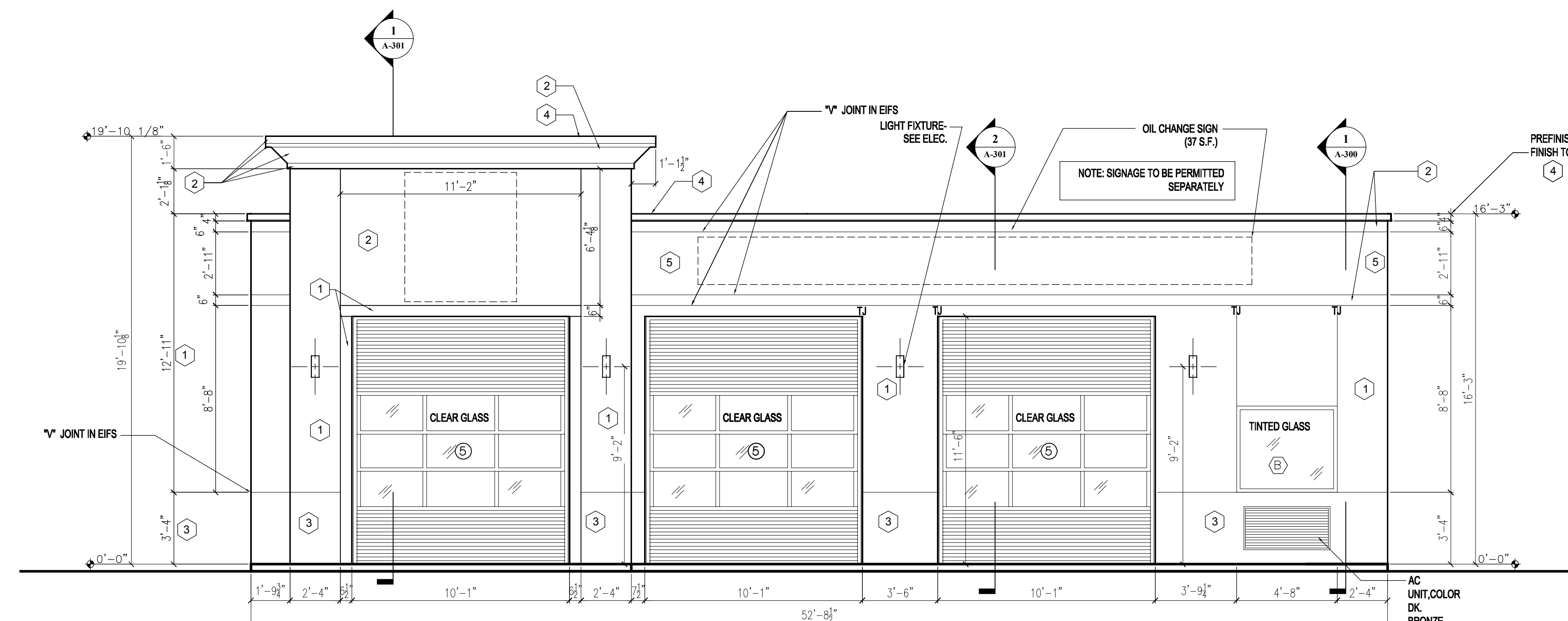
A-200



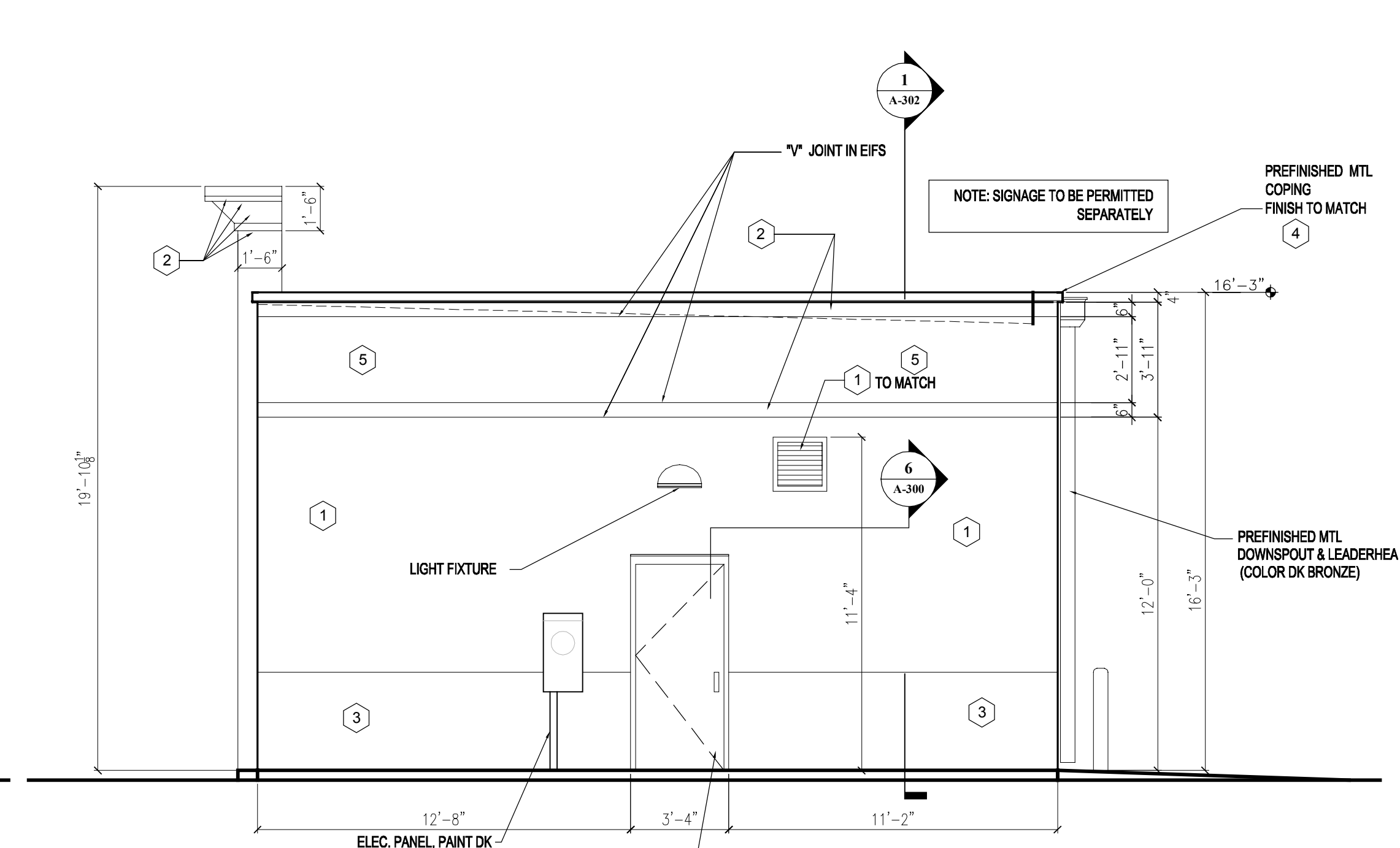
1 NORTH ELEVATION
A-200 1/4"=1'-0"



3 WEST ELEVATION
A-200 1/4"=1'-0"



2 SOUTH ELEVATION
A-200 1/4"=1'-0"



4 EAST ELEVATION
A-200 1/4"=1'-0"

EXTERIOR FINISH SCHEDULE				
NO.	AREA	COATS	COLOR	FINISH
1	EIFS OR STUCCO MAIN COLOR	SEE SPECIFICATION AND MANUFACTURER'S REQMENTS	MATCH SW COLOR #7693, STONEBRIAR	FINISH TO MATCH STO "MEDIUM SAND" OR DRYVIT "SANDPEBBLE FINE"
2	EIFS OR STUCCO ACCENT BAND AND FACE EIFS OR STUCCO CORNICE	SEE SPECIFICATION AND MANUFACTURER'S REQMENTS	MATCH SW COLOR #7678, COTTAGE CREAM	FINISH TO MATCH STO "FINE SAND" OR DRYVIT "SANDBLAST"
3	EIFS OR STUCCO WAINSCOT	SEE SPECIFICATION AND MANUFACTURER'S REQMENTS	MATCH SW COLOR #6097, STURDY BROWN	FINISH TO MATCH STO "MEDIUM SAND" OR DRYVIT "SANDPEBBLE"
4	COPING	SEE SPECIFICATION AND MANUFACTURER'S REQMENTS	MATCH SW COLOR #6871, POSITIVE RED	FINISH TO BE KYNAR 500 PREFINISHED
5	EIFS OR STUCCO SECONDARY COLOR	SEE SPECIFICATION AND MANUFACTURER'S REQMENTS	MATCH SW COLOR #6871, POSITIVE RED	FINISH TO MATCH STO "MEDIUM SAND" OR DRYVIT "SANDPEBBLE FINE"
6				
7	BOLLARDS	SEE SPECIFICATION AND MANUFACTURER'S REQMENTS	MATCH SW COLOR #6871, POSITIVE RED	----

EXTERIOR FINISH NOTES:

- EIFS TO BE STO THERM CI CLASSIC, DRYVIT OUTSULATION PLUS MD OR APPROVED EQUAL.
- EIFS TO HAVE ULTRA-HIGH IMPACT MESH TO 4'-0" AFF.
- EIFS TO HAVE HIGH IMPACT MESH FROM 4'-0" AFF TO 8'-0" AFF.
- EIFS TO HAVE STANDRADRD IMPACT MESH ABOVE 8'-0" AFF.
- METAL ROOF TO BE ATAS DUTCH SEAM OR BERRIDGE MANUF. WITH DEEP VEE PANELS AND 2" BATTEN CAPS.
- METAL ROOF PANELS TO BE 24 GA. GALVALUME WITH KYNAR 500, 2.0 MILS THICK FLOURCARBON FINISH.
- METAL COPING TO BE PREFINISHED, 24 GA. GALVALUME WITH KYNAR 500, 2.0 MILS THICK FLOURCARBON FINISH.

NOTE: ALL EIFS WILL WATER MANAGED AND NOT BARRIER TYPE.

5 EIFS V-JOINT DETAIL
A-200 1 1/2"=1'-0"

