

AGENDA ITEM

TO: Tim Vandall, City Administrator
FROM: Jason Crum, Parks and Recreation Director 
DATE: June 29, 2023
SUBJECT: Aquatics Center site location

Jeff Bartley, the City's consultant with Waters Edge Aquatic Design will be attending the meeting to brief the City Council on progress to date and to present two site options for City Council consideration. While the draft features concept is not complete at this point, he will be showing the most current concept and a copy is included for information. For City Council consideration, he will be showing two layout concepts, one using the eastern portion of the site and the other using the western portion of the site. A decision will need to be made on the preferred placement within the property in order to start on more detailed design work. A citizen advisory committee has been formed and is comprised of Dana Fontenot, Amy Crumpacker, David Bresser, Adam Bremer, Norine Lahoun, Janette Labee-Holdeman and Larry Boswell. Staff to include City Administrator Tim Vandall and Parks and Recreation staff Cody Burnett, Christina Moberly and Jason Crum have been in attendance of these meetings as well. The committee consensus recommendation is for the plan B2 location. Attached are the site concepts for review.

Policy Consideration: N/A

Financial Consideration: N/A

Action:

A motion to approve concept B2 for placement of the Aquatic Center on the site.

AGENDA ITEM

PROJECT DESCRIPTION: Landmark Analytics Center
Engineer's Estimate - Concept B
PREPARED: 06/20/23

NO.	DESCRIPTION	UNIT	QUANTITY	UNIT PRICE	TOTAL PRICE
1	CONCRETE SLAB	SQ. YD.	1,500.00	\$100.00	\$150,000.00
2	CONCRETE CURB	LINEAL FT.	1,500.00	\$10.00	\$15,000.00
3	CONCRETE SIDEWALK	SQ. YD.	1,500.00	\$10.00	\$15,000.00
4	CONCRETE DRIVEWAY	SQ. YD.	1,500.00	\$10.00	\$15,000.00
5	CONCRETE FLOOR	SQ. YD.	1,500.00	\$10.00	\$15,000.00
6	CONCRETE WALL	SQ. YD.	1,500.00	\$10.00	\$15,000.00
7	CONCRETE FENCE	LINEAL FT.	1,500.00	\$10.00	\$15,000.00
8	CONCRETE DRIVEWAY	SQ. YD.	1,500.00	\$10.00	\$15,000.00
9	CONCRETE DRIVEWAY	SQ. YD.	1,500.00	\$10.00	\$15,000.00
10	CONCRETE DRIVEWAY	SQ. YD.	1,500.00	\$10.00	\$15,000.00
11	CONCRETE DRIVEWAY	SQ. YD.	1,500.00	\$10.00	\$15,000.00
12	CONCRETE DRIVEWAY	SQ. YD.	1,500.00	\$10.00	\$15,000.00
13	CONCRETE DRIVEWAY	SQ. YD.	1,500.00	\$10.00	\$15,000.00
14	CONCRETE DRIVEWAY	SQ. YD.	1,500.00	\$10.00	\$15,000.00
15	CONCRETE DRIVEWAY	SQ. YD.	1,500.00	\$10.00	\$15,000.00
16	CONCRETE DRIVEWAY	SQ. YD.	1,500.00	\$10.00	\$15,000.00
17	CONCRETE DRIVEWAY	SQ. YD.	1,500.00	\$10.00	\$15,000.00
18	CONCRETE DRIVEWAY	SQ. YD.	1,500.00	\$10.00	\$15,000.00
19	CONCRETE DRIVEWAY	SQ. YD.	1,500.00	\$10.00	\$15,000.00
20	CONCRETE DRIVEWAY	SQ. YD.	1,500.00	\$10.00	\$15,000.00
21	CONCRETE DRIVEWAY	SQ. YD.	1,500.00	\$10.00	\$15,000.00
22	CONCRETE DRIVEWAY	SQ. YD.	1,500.00	\$10.00	\$15,000.00
23	CONCRETE DRIVEWAY	SQ. YD.	1,500.00	\$10.00	\$15,000.00
24	CONCRETE DRIVEWAY	SQ. YD.	1,500.00	\$10.00	\$15,000.00
25	CONCRETE DRIVEWAY	SQ. YD.	1,500.00	\$10.00	\$15,000.00
26	CONCRETE DRIVEWAY	SQ. YD.	1,500.00	\$10.00	\$15,000.00
27	CONCRETE DRIVEWAY	SQ. YD.	1,500.00	\$10.00	\$15,000.00
28	CONCRETE DRIVEWAY	SQ. YD.	1,500.00	\$10.00	\$15,000.00
29	CONCRETE DRIVEWAY	SQ. YD.	1,500.00	\$10.00	\$15,000.00
30	CONCRETE DRIVEWAY	SQ. YD.	1,500.00	\$10.00	\$15,000.00
31	CONCRETE DRIVEWAY	SQ. YD.	1,500.00	\$10.00	\$15,000.00
32	CONCRETE DRIVEWAY	SQ. YD.	1,500.00	\$10.00	\$15,000.00
33	CONCRETE DRIVEWAY	SQ. YD.	1,500.00	\$10.00	\$15,000.00
34	CONCRETE DRIVEWAY	SQ. YD.	1,500.00	\$10.00	\$15,000.00
35	CONCRETE DRIVEWAY	SQ. YD.	1,500.00	\$10.00	\$15,000.00
36	CONCRETE DRIVEWAY	SQ. YD.	1,500.00	\$10.00	\$15,000.00
37	CONCRETE DRIVEWAY	SQ. YD.	1,500.00	\$10.00	\$15,000.00
38	CONCRETE DRIVEWAY	SQ. YD.	1,500.00	\$10.00	\$15,000.00
39	CONCRETE DRIVEWAY	SQ. YD.	1,500.00	\$10.00	\$15,000.00
40	CONCRETE DRIVEWAY	SQ. YD.	1,500.00	\$10.00	\$15,000.00
41	CONCRETE DRIVEWAY	SQ. YD.	1,500.00	\$10.00	\$15,000.00
42	CONCRETE DRIVEWAY	SQ. YD.	1,500.00	\$10.00	\$15,000.00
43	CONCRETE DRIVEWAY	SQ. YD.	1,500.00	\$10.00	\$15,000.00
44	CONCRETE DRIVEWAY	SQ. YD.	1,500.00	\$10.00	\$15,000.00
45	CONCRETE DRIVEWAY	SQ. YD.	1,500.00	\$10.00	\$15,000.00
46	CONCRETE DRIVEWAY	SQ. YD.	1,500.00	\$10.00	\$15,000.00
47	CONCRETE DRIVEWAY	SQ. YD.	1,500.00	\$10.00	\$15,000.00
48	CONCRETE DRIVEWAY	SQ. YD.	1,500.00	\$10.00	\$15,000.00
49	CONCRETE DRIVEWAY	SQ. YD.	1,500.00	\$10.00	\$15,000.00
50	CONCRETE DRIVEWAY	SQ. YD.	1,500.00	\$10.00	\$15,000.00
51	CONCRETE DRIVEWAY	SQ. YD.	1,500.00	\$10.00	\$15,000.00
52	CONCRETE DRIVEWAY	SQ. YD.	1,500.00	\$10.00	\$15,000.00

SITE OPTION B-2
LANSING, KS
MARY AND BITTERSWEET
SITE
06-27-23

SITE OPTION B-2
LANSING, KS
MARY AND BITTERSWEET
SITE
06-27-23

SITE OPTION B-2
LANSING, KS
MARY AND BITTERSWEET
SITE
06-27-23

ALTA/NSPS LAND TITLE SURVEY

CROSSROADS UNITED METHODIST CHURCH

MARY & BITTERSWEET STREET, LANSING, KANSAS

SMH
CONSULTANTS

Manhattan, KS - HQ
(785) 776-0541
Dodge City, KS
(620) 255-1982
Kansas City
(817) 444-9615
Colorado Springs, CO
(719) 400-2145

NORTH	REVISION DATE	△	REVISION DESCRIPTION
	00.00.00	*	(DESCRIPTION)
*	*	*	
*	*	*	
*	*	*	
*	*	*	
*	*	*	

A ruler is placed horizontally at the top of the page, with markings from 0 to 10 cm. Below the ruler, a triangular object is shown, which appears to be a piece of paper or a card with a hole in the center.

PROJECT #: 226A-0339
TDS #: 91
CHECKED BY: TS
DRAWN BY: ASJ

SHEET # 1

TOTAL SHEETS 1

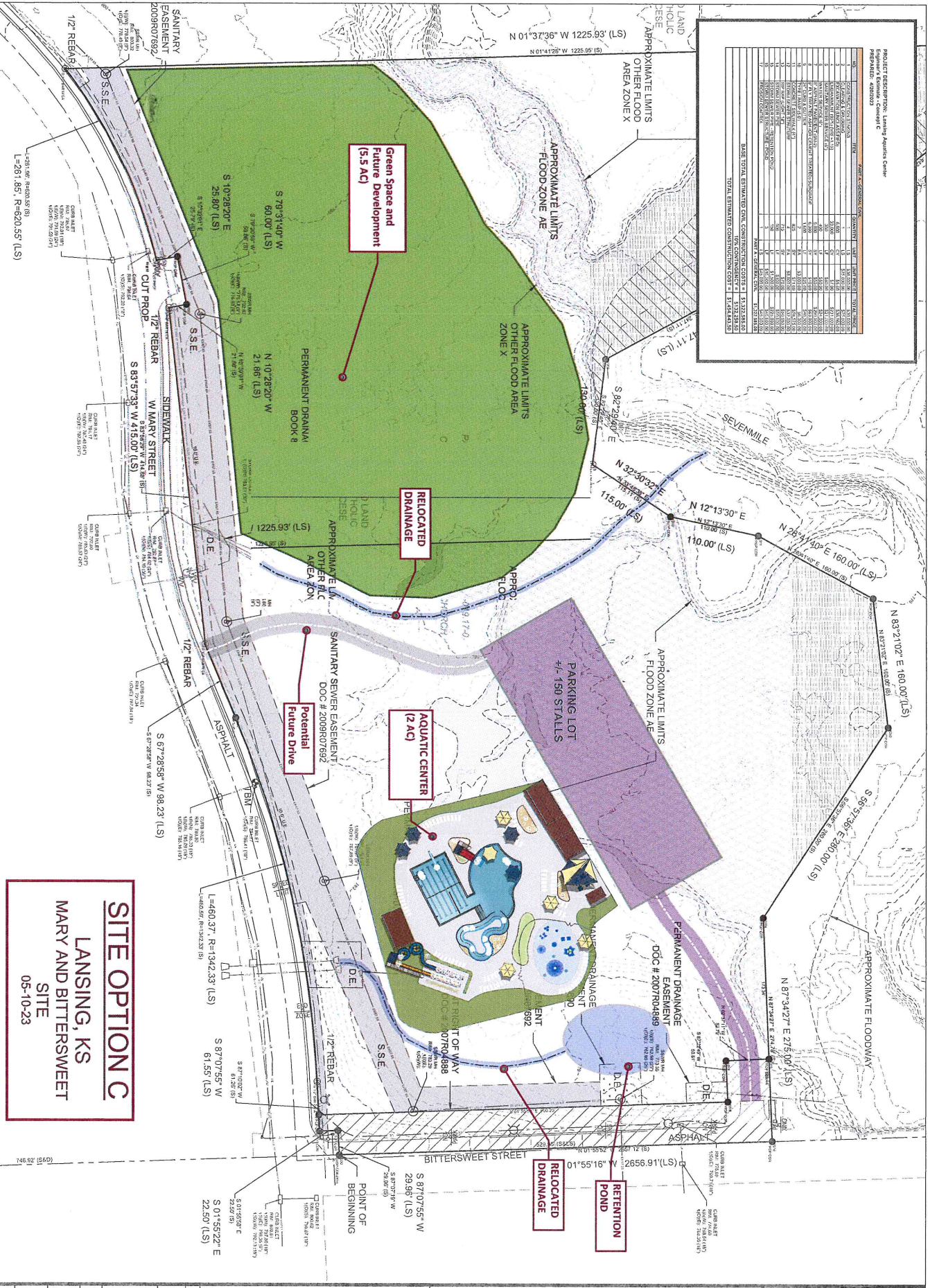
PROJECT DESCRIPTION: Lansing Aquatics Center
Engineer's Estimate - Concept B
PREPARED: 6/8/2023

PART A - GENERAL CIVIL						
NO.	ITEM	QUANTITY	UNIT	UNIT PRICE	TOTAL PRICE	
1	CONSTRUCTION STAKING	1	LS	\$30,000.00	\$30,000.00	
2	CLEARING & GRUBBING	1	LS	\$75,000.00	\$75,000.00	
3	EXCAVATION (UNCLASSIFIED)	8,300	CY	\$5.60	\$46,480.00	
4	EMBANKMENT (95%) (VRF=1.15)	8,300	CY	\$7.00	\$58,100.00	
5	SANITARY SEWER SERVICE (6")	75	LF	\$60.00	\$4,500.00	
6	WATER SERVICE (6")	100	LF	\$60.00	\$6,000.00	
7	8" ASPHALT PAVEMENT (BM-2)	5,500	SY	\$50.00	\$275,000.00	
8	9" FLY TREATED ASH (OR CEMENT TREATED) SUBGRADE	6,000	SY	\$10.00	\$60,000.00	
9	24" CURB & GUTTER	1,125	LF	\$25.00	\$28,125.00	
10	TYPE I RAMP (5.0')	2	EA	\$3,000.00	\$6,000.00	
11	CONCRETE SIDEWALK (4")	250	SY	\$71.00	\$17,750.00	
12	STORM SEWER STRUTURE	4	EA	\$8,000.00	\$32,000.00	
13	RIP RAP (LIGHT 18")	20	SY	\$70.00	\$1,400.00	
14	STORM SEWER PIPE	400	LF	\$100.00	\$40,000.00	
15	EROSION CONTROL	1	LS	\$45,000.00	\$45,000.00	
PART A - GENERAL CIVIL						
					\$725,355.00	
BASE TOTAL ESTIMATED CIVIL CONSTRUCTION COSTS =					\$725,355.00	
10% CONTINGENCY =					\$72,535.50	
TOTAL ESTIMATED CONSTRUCTION COST =					\$797,890.50	

PROJECT DESCRIPTION: Lansing Aquatics Center
 PREPARED BY: SMH CONSULTANTS
 DATE: 05-10-23

NO.	DESCRIPTION	UNIT	QUANTITY	UNIT PRICE	TOTAL PRICE
1	CONCRETE FLOORING	SQ. YD.	4,000	\$12.00	\$48,000.00
2	CONCRETE FLOORING	SQ. YD.	1,000	\$12.00	\$12,000.00
3	CONCRETE FLOORING	SQ. YD.	1,000	\$12.00	\$12,000.00
4	CONCRETE FLOORING	SQ. YD.	1,000	\$12.00	\$12,000.00
5	CONCRETE FLOORING	SQ. YD.	1,000	\$12.00	\$12,000.00
6	CONCRETE FLOORING	SQ. YD.	1,000	\$12.00	\$12,000.00
7	CONCRETE FLOORING	SQ. YD.	1,000	\$12.00	\$12,000.00
8	CONCRETE FLOORING	SQ. YD.	1,000	\$12.00	\$12,000.00
9	CONCRETE FLOORING	SQ. YD.	1,000	\$12.00	\$12,000.00
10	CONCRETE FLOORING	SQ. YD.	1,000	\$12.00	\$12,000.00
11	CONCRETE FLOORING	SQ. YD.	1,000	\$12.00	\$12,000.00
12	CONCRETE FLOORING	SQ. YD.	1,000	\$12.00	\$12,000.00
13	CONCRETE FLOORING	SQ. YD.	1,000	\$12.00	\$12,000.00
14	CONCRETE FLOORING	SQ. YD.	1,000	\$12.00	\$12,000.00
15	CONCRETE FLOORING	SQ. YD.	1,000	\$12.00	\$12,000.00
16	CONCRETE FLOORING	SQ. YD.	1,000	\$12.00	\$12,000.00
17	CONCRETE FLOORING	SQ. YD.	1,000	\$12.00	\$12,000.00
18	CONCRETE FLOORING	SQ. YD.	1,000	\$12.00	\$12,000.00
19	CONCRETE FLOORING	SQ. YD.	1,000	\$12.00	\$12,000.00
20	CONCRETE FLOORING	SQ. YD.	1,000	\$12.00	\$12,000.00
21	CONCRETE FLOORING	SQ. YD.	1,000	\$12.00	\$12,000.00
22	CONCRETE FLOORING	SQ. YD.	1,000	\$12.00	\$12,000.00
23	CONCRETE FLOORING	SQ. YD.	1,000	\$12.00	\$12,000.00
24	CONCRETE FLOORING	SQ. YD.	1,000	\$12.00	\$12,000.00
25	CONCRETE FLOORING	SQ. YD.	1,000	\$12.00	\$12,000.00
26	CONCRETE FLOORING	SQ. YD.	1,000	\$12.00	\$12,000.00
27	CONCRETE FLOORING	SQ. YD.	1,000	\$12.00	\$12,000.00
28	CONCRETE FLOORING	SQ. YD.	1,000	\$12.00	\$12,000.00
29	CONCRETE FLOORING	SQ. YD.	1,000	\$12.00	\$12,000.00
30	CONCRETE FLOORING	SQ. YD.	1,000	\$12.00	\$12,000.00
31	CONCRETE FLOORING	SQ. YD.	1,000	\$12.00	\$12,000.00
32	CONCRETE FLOORING	SQ. YD.	1,000	\$12.00	\$12,000.00
33	CONCRETE FLOORING	SQ. YD.	1,000	\$12.00	\$12,000.00
34	CONCRETE FLOORING	SQ. YD.	1,000	\$12.00	\$12,000.00
35	CONCRETE FLOORING	SQ. YD.	1,000	\$12.00	\$12,000.00
36	CONCRETE FLOORING	SQ. YD.	1,000	\$12.00	\$12,000.00
37	CONCRETE FLOORING	SQ. YD.	1,000	\$12.00	\$12,000.00
38	CONCRETE FLOORING	SQ. YD.	1,000	\$12.00	\$12,000.00
39	CONCRETE FLOORING	SQ. YD.	1,000	\$12.00	\$12,000.00
40	CONCRETE FLOORING	SQ. YD.	1,000	\$12.00	\$12,000.00
41	CONCRETE FLOORING	SQ. YD.	1,000	\$12.00	\$12,000.00
42	CONCRETE FLOORING	SQ. YD.	1,000	\$12.00	\$12,000.00
43	CONCRETE FLOORING	SQ. YD.	1,000	\$12.00	\$12,000.00
44	CONCRETE FLOORING	SQ. YD.	1,000	\$12.00	\$12,000.00
45	CONCRETE FLOORING	SQ. YD.	1,000	\$12.00	\$12,000.00
46	CONCRETE FLOORING	SQ. YD.	1,000	\$12.00	\$12,000.00
47	CONCRETE FLOORING	SQ. YD.	1,000	\$12.00	\$12,000.00
48	CONCRETE FLOORING	SQ. YD.	1,000	\$12.00	\$12,000.00
49	CONCRETE FLOORING	SQ. YD.	1,000	\$12.00	\$12,000.00
50	CONCRETE FLOORING	SQ. YD.	1,000	\$12.00	\$12,000.00
51	CONCRETE FLOORING	SQ. YD.	1,000	\$12.00	\$12,000.00
52	CONCRETE FLOORING	SQ. YD.	1,000	\$12.00	\$12,000.00
53	CONCRETE FLOORING	SQ. YD.	1,000	\$12.00	\$12,000.00
54	CONCRETE FLOORING	SQ. YD.	1,000	\$12.00	\$12,000.00
55	CONCRETE FLOORING	SQ. YD.	1,000	\$12.00	\$12,000.00
56	CONCRETE FLOORING	SQ. YD.	1,000	\$12.00	\$12,000.00
57	CONCRETE FLOORING	SQ. YD.	1,000	\$12.00	\$12,000.00
58	CONCRETE FLOORING	SQ. YD.	1,000	\$12.00	\$12,000.00
59	CONCRETE FLOORING	SQ. YD.	1,000	\$12.00	\$12,000.00
60	CONCRETE FLOORING	SQ. YD.	1,000	\$12.00	\$12,000.00
61	CONCRETE FLOORING	SQ. YD.	1,000	\$12.00	\$12,000.00
62	CONCRETE FLOORING	SQ. YD.	1,000	\$12.00	\$12,000.00
63	CONCRETE FLOORING	SQ. YD.	1,000	\$12.00	\$12,000.00
64	CONCRETE FLOORING	SQ. YD.	1,000	\$12.00	\$12,000.00
65	CONCRETE FLOORING	SQ. YD.	1,000	\$12.00	\$12,000.00
66	CONCRETE FLOORING	SQ. YD.	1,000	\$12.00	\$12,000.00
67	CONCRETE FLOORING	SQ. YD.	1,000	\$12.00	\$12,000.00
68	CONCRETE FLOORING	SQ. YD.	1,000	\$12.00	\$12,000.00
69	CONCRETE FLOORING	SQ. YD.	1,000	\$12.00	\$12,000.00
70	CONCRETE FLOORING	SQ. YD.	1,000	\$12.00	\$12,000.00
71	CONCRETE FLOORING	SQ. YD.	1,000	\$12.00	\$12,000.00
72	CONCRETE FLOORING	SQ. YD.	1,000	\$12.00	\$12,000.00
73	CONCRETE FLOORING	SQ. YD.	1,000	\$12.00	\$12,000.00
74	CONCRETE FLOORING	SQ. YD.	1,000	\$12.00	\$12,000.00
75	CONCRETE FLOORING	SQ. YD.	1,000	\$12.00	\$12,000.00
76	CONCRETE FLOORING	SQ. YD.	1,000	\$12.00	\$12,000.00
77	CONCRETE FLOORING	SQ. YD.	1,000	\$12.00	\$12,000.00
78	CONCRETE FLOORING	SQ. YD.	1,000	\$12.00	\$12,000.00
79	CONCRETE FLOORING	SQ. YD.	1,000	\$12.00	\$12,000.00
80	CONCRETE FLOORING	SQ. YD.	1,000	\$12.00	\$12,000.00
81	CONCRETE FLOORING	SQ. YD.	1,000	\$12.00	\$12,000.00
82	CONCRETE FLOORING	SQ. YD.	1,000	\$12.00	\$12,000.00
83	CONCRETE FLOORING	SQ. YD.	1,000	\$12.00	\$12,000.00
84	CONCRETE FLOORING	SQ. YD.	1,000	\$12.00	\$12,000.00
85	CONCRETE FLOORING	SQ. YD.	1,000	\$12.00	\$12,000.00
86	CONCRETE FLOORING	SQ. YD.	1,000	\$12.00	\$12,000.00
87	CONCRETE FLOORING	SQ. YD.	1,000	\$12.00	\$12,000.00
88	CONCRETE FLOORING	SQ. YD.	1,000	\$12.00	\$12,000.00
89	CONCRETE FLOORING	SQ. YD.	1,000	\$12.00	\$12,000.00
90	CONCRETE FLOORING	SQ. YD.	1,000	\$12.00	\$12,000.00
91	CONCRETE FLOORING	SQ. YD.	1,000	\$12.00	\$12,000.00
92	CONCRETE FLOORING	SQ. YD.	1,000	\$12.00	\$12,000.00
93	CONCRETE FLOORING	SQ. YD.	1,000	\$12.00	\$12,000.00
94	CONCRETE FLOORING	SQ. YD.	1,000	\$12.00	\$12,000.00
95	CONCRETE FLOORING	SQ. YD.	1,000	\$12.00	\$12,000.00
96	CONCRETE FLOORING	SQ. YD.	1,000	\$12.00	\$12,000.00
97	CONCRETE FLOORING	SQ. YD.	1,000	\$12.00	\$12,000.00
98	CONCRETE FLOORING	SQ. YD.	1,000	\$12.00	\$12,000.00
99	CONCRETE FLOORING	SQ. YD.	1,000	\$12.00	\$12,000.00
100	CONCRETE FLOORING	SQ. YD.	1,000	\$12.00	\$12,000.00

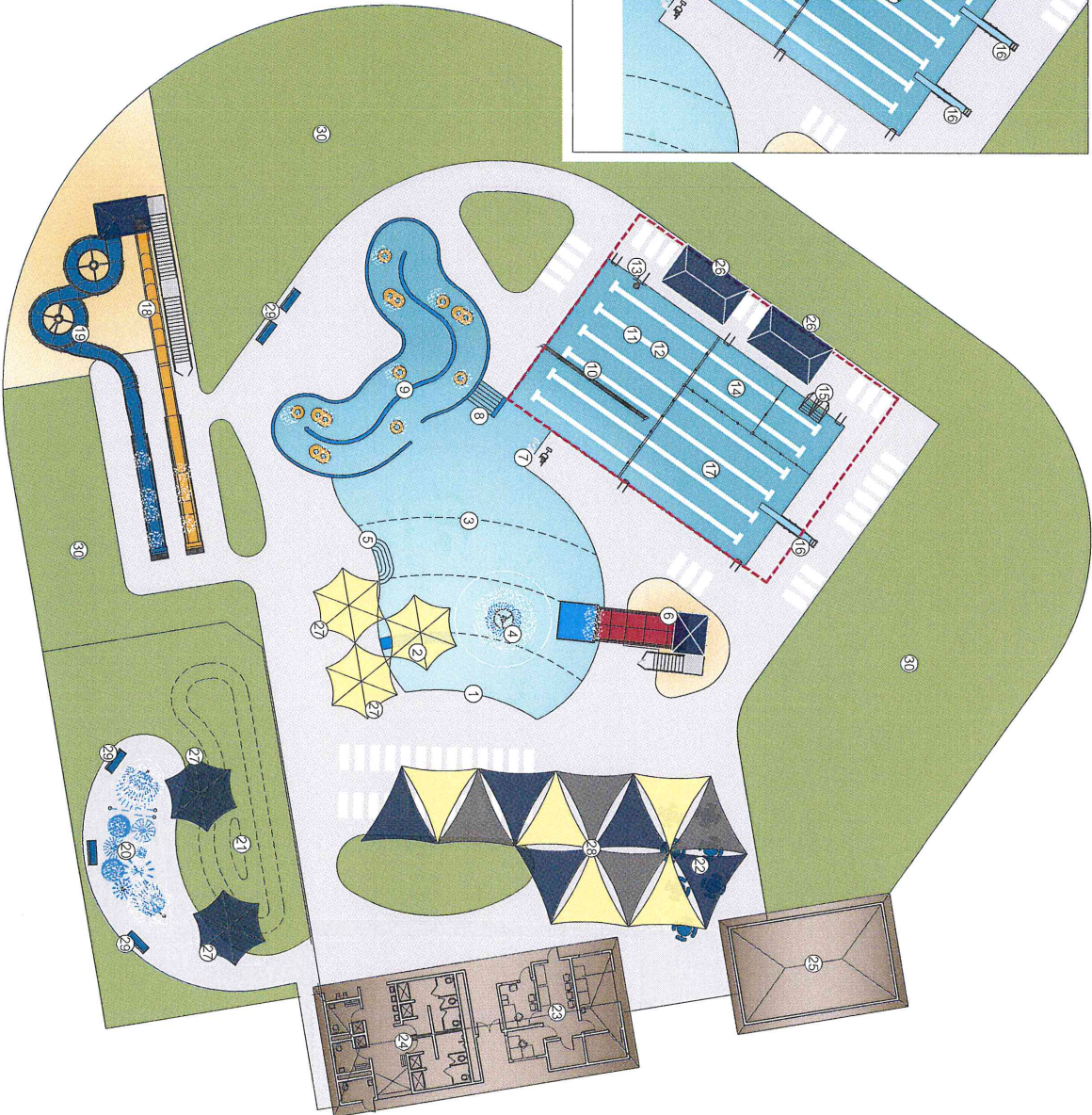
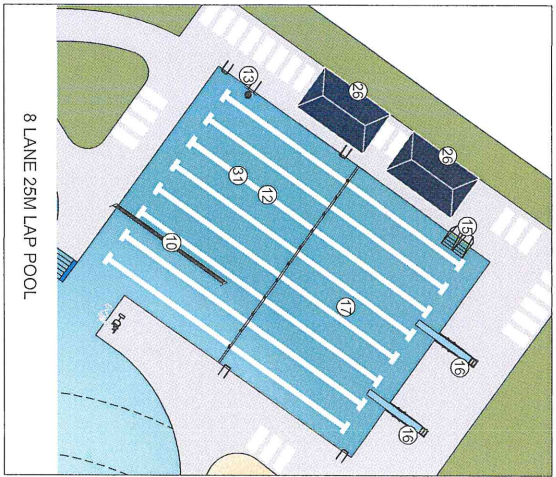
BASE TOTAL ESTIMATED CIVIL CONSTRUCTION COSTS = \$1,532,555.25
 TOTAL ESTIMATED CONSTRUCTION COSTS = \$1,544,444.30



SITE OPTION C
LANSING, KS
MARY AND BITTERSWEET
SITE
05-10-23

PROJECT DESCRIPTION: Lansing Aquatics Center
Engineer's Estimate - Concept C
PREPARED: 4/20/2023

PART A - GENERAL CIVIL						
NO.	ITEM	QUANTITY	UNIT	UNIT PRICE	TOTAL PRICE	
1	CONSTRUCTION STAKING	1	LS	\$30,000.00	\$30,000.00	
2	CLEARING & GRUBBING	1	LS	\$75,000.00	\$75,000.00	
3	EXCAVATION (UNCLASSIFIED)	6,600	CY	\$5.60	\$36,960.00	
4	EMBANKMENT (95%) (VRE=1.15)	33,000	CY	\$7.00	\$231,000.00	
5	SANITARY SEWER SERVICE (6")	350	LF	\$60.00	\$21,000.00	
6	WATER SERVICE (6")	400	LF	\$60.00	\$24,000.00	
7	8" ASPHALT PAVEMENT (BM-2)	5,800	SY	\$50.00	\$290,000.00	
8	9" FLY TREATED ASH (OR CEMENT TREATED) SUBGRADE	6,300	SY	\$10.00	\$63,000.00	
9	24" CURB & GUTTER	1,600	LF	\$25.00	\$40,000.00	
10	TYPE I RAMP (5.0')	2	EA	\$3,000.00	\$6,000.00	
11	CONCRETE SIDEWALK (4")	825	SY	\$71.00	\$58,575.00	
12	STORM SEWER STRUCTURE	4	EA	\$8,000.00	\$32,000.00	
13	RIP RAP (LIGHT 18")	715	SY	\$70.00	\$50,050.00	
14	STORM SEWER PIPE	500	LF	\$100.00	\$50,000.00	
15	STORM SEWER PIPE - RETENTION POND	150	LF	\$1,500.00	\$225,000.00	
16	STORM SEWER STRUCTURE - POND	3	LF	\$15,000.00	\$45,000.00	
17	EROSION CONTROL	1	LS	\$45,000.00	\$45,000.00	
PART A - GENERAL CIVIL					\$1,322,585.00	
BASE TOTAL ESTIMATED CIVIL CONSTRUCTION COSTS =					\$1,322,585.00	
10% CONTINGENCY =					\$132,258.50	
TOTAL ESTIMATED CONSTRUCTION COST =					\$1,454,843.50	



Shallow Play Area	3,905 S.F.
Lazy River	1,566 S.F.
Lap Area - 25Y	1,594 S.F.
Diving Area	1,783 S.F.
Total Water Surface Area	8,848 S.F.
Lazy River Length	190 L.F.
Splash Pad Area	1,650 S.F.
Concrete Deck Area	18,535 S.F.

- 1 Zero Depth Entry
- 2 Water Bench
- 3 Shallow Play Area
- 4 Tail Play Structure
- 5 ADA Pool Steps
- 6 Family Slide
- 7 ADA Lift
- 8 Pool Steps
- 9 Lazy River - 8'-0" wide - 190 l.f.
- 10 Volleyball Net
- 11 (6) 25 Yard Lap Lanes
- 12 Lap Area
- 13 Basketball Goal
- 14 Deep Swim Area
- 15 Climbing Wall
- 16 1M Diving Board
- 17 Diving Area
- 18 Speed Slide with Run-out
- 19 Open Body Slide with Run-out
- 20 Splash Pad Area with Various Sprays
- 21 Grass berm area - 4:1 slope
- 22 Concession Area with Table and Shade
- 23 Concessions/ Admin
- 24 Restrooms
- 25 Filter Building
- 26 Sunshade - 12x20' rec.
- 27 Sunshade - 20' hex.
- 28 Sunshade - 20' triangular
- 29 Benches
- 30 Grass Area
- 31 (8) 25 Meter Lap Lanes

