

PRESERVING THE HISTORY OF DELAWARE TOWNSHIP,  
THE CITY OF LANSING,  
KANSAS STATE PENITENTIARY AT LANSING AND  
UNITED STATES PENITENTIARY AT LEAVENWORTH, KS

LANSING HISTORICAL SOCIETY



MUSEUM

115 EAST KANSAS AVENUE, LANSING, KANSAS

WEBSITE: [LANSINGKANSASHISTORY.COM](http://LANSINGKANSASHISTORY.COM)  
EMAIL: [INFO@LANSINGKANSASHISTORY.COM](mailto:INFO@LANSINGKANSASHISTORY.COM)

---

April 14, 2021

To Whom it may concern:

The Lansing Historical Society and Museum board requests to be placed on the April 21 City Council meeting agenda regarding the Lansing Historical Society and Museum's recent request for the return of museum funds held by the city.

Thank you,

A handwritten signature in blue ink, appearing to read "Debra Bates-Lamborn". The signature is fluid and cursive, written over a light blue circular stamp.

Debra Bates-Lamborn  
President of the Lansing Historical Society and Museum  
Jeff Conklin, Vice President  
Lisa Perry Snodgrass, Treasurer  
Catherine Trowbridge, Secretary  
Karen Miller, Board Member  
John Craig, Board Member  
Paul Lamborn, Board Member

PRESERVING THE HISTORY OF DELAWARE TOWNSHIP,  
THE CITY OF LANSING,  
KANSAS STATE PENITENTIARY AT LANSING AND  
UNITED STATES PENITENTIARY AT LEAVENWORTH, KS

LANSING HISTORICAL SOCIETY



115 EAST KANSAS AVENUE, LANSING, KANSAS

WEBSITE: [LANSINGKANSASHISTORY.COM](http://LANSINGKANSASHISTORY.COM)  
EMAIL: [INFO@LANSINGKANSASHISTORY.COM](mailto:INFO@LANSINGKANSASHISTORY.COM)

---

January 2022

Members of the Lansing Historical Society:

It has come to our attention that \$143,188.00 raised during a ten-year period by the Lansing Historical Society was turned over to the City of Lansing. The funds were raised for the Lansing Historical Museum and the Kansas Regional Prison Museum. At the time, the Lansing Historical Museum was owned and managed by the city. The Kansas Regional Prison Museum was formally dissolved two years ago.

Lansing City Administrator Tim Vandall has rejected our request to return the museum funds to the Lansing Historical Society. Without an influx of funds we believe the museum won't last two more years. With that in mind, we are reluctant to solicit donations while the City of Lansing holds those funds.

Leonard Lockwood was treasurer for both non-profit museum entities. When the Kansas Regional Prison Museum dissolved in 2020, Lockwood relinquished all funds raised by the Lansing Historical Society to the City of Lansing. We believe the money should have been returned to the Lansing Historical Society.

Between 2006 and 2016, Lansing Historical Museum was owned and staffed by the City of Lansing. The Lansing Historical Society's original agreement with the City of Lansing specifically stated that the city would operate and staff the museum. By 2017 the city was no longer fulfilling that obligation. The Historical Society Board was forced to retake control in order to have the museum open to the public.

We believe the money the City of Lansing holds for the defunct Kansas Regional Prison Museum rightfully belongs to the Lansing Historical Society and Museum.

Please share your thoughts and support by sending an email to: [info@Lansingkansashistory.com](mailto:info@Lansingkansashistory.com). Alternatively, visit us in person at the museum between 1:00 and 3:00 p.m. on Sundays. To see the architectural rendering of the proposed Kansas Regional Prison Museum, visit our website at [Lansingkansashistory.com](http://Lansingkansashistory.com).

Thank you,

A handwritten signature in black ink, appearing to read 'Debra Bates-Lamborn', is written over a faint, larger version of the same signature.

Debra Bates-Lamborn

President of the Lansing Historical Society and Museum

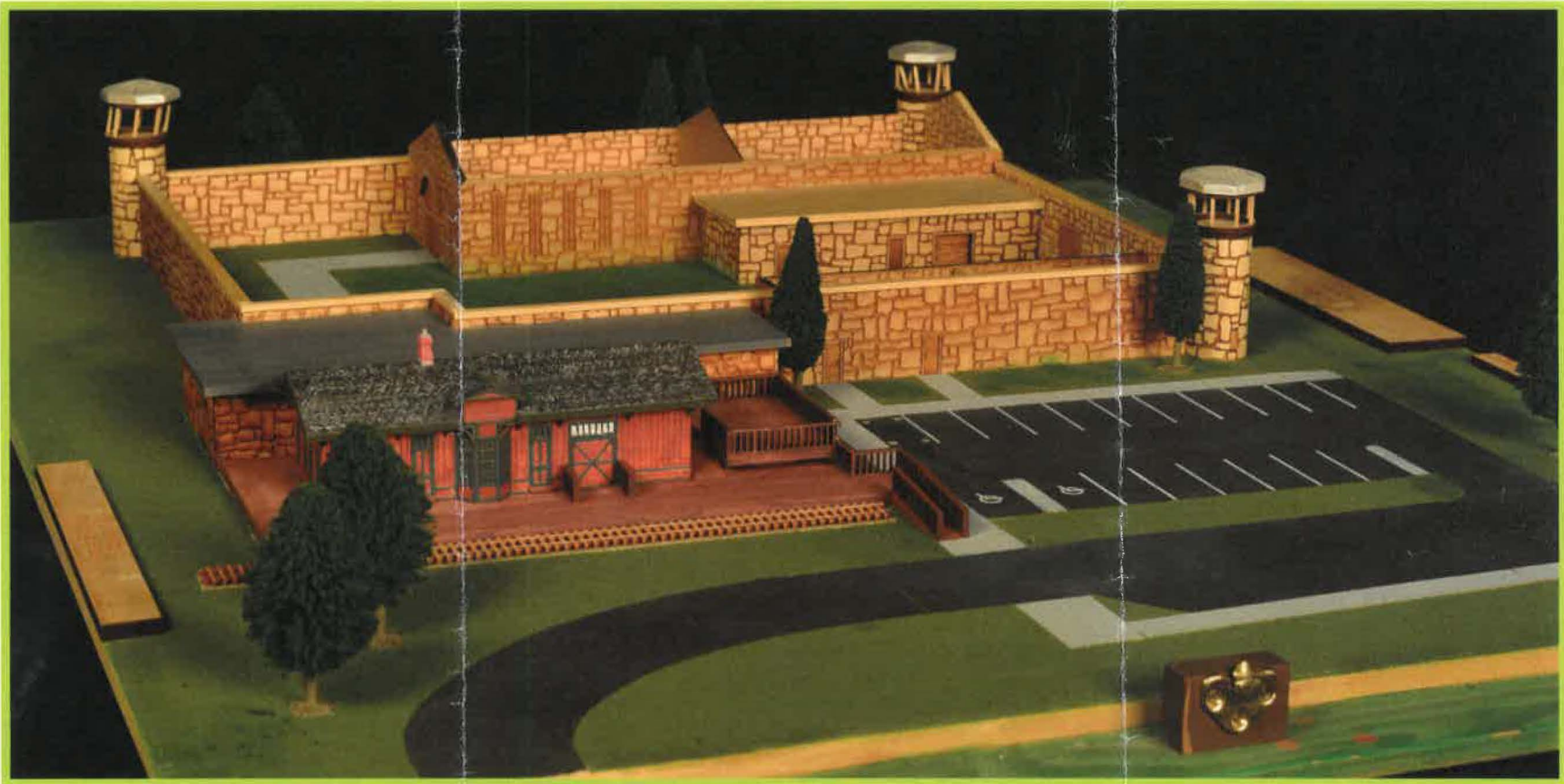
Jeff Conklin, Vice President

Lisa Perry Snodgrass, Treasurer

Catherine Sherley Trowbridge, Secretary

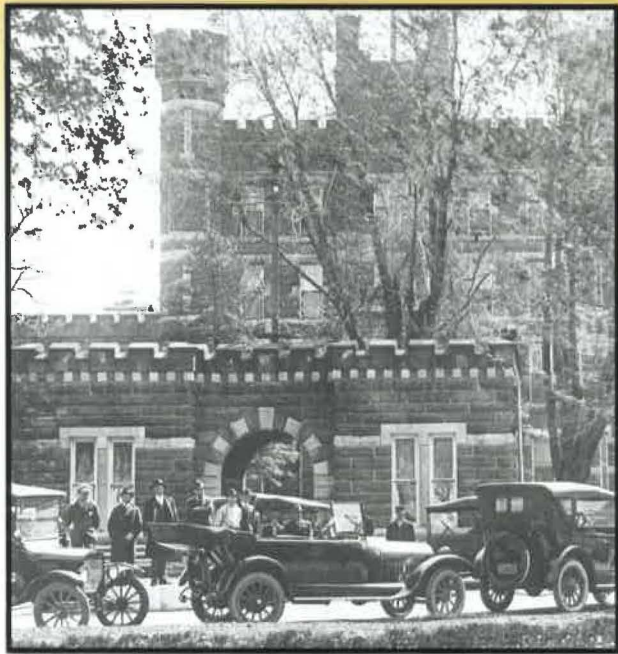
John Craig, Board Member

Paul Lamborn, Board Member



This portable display (circa 2006) depicts the existing Lansing Historical Society and Museum (front left) and the proposed Kansas Regional Prison Museum (now defunct). The display was specifically built to be taken to events for public viewing, where it was promoted as the next step in the evolution of the Lansing Historical Society Museum complex.





*KSP Circa 1917*

## KANSAS STATE PRISON

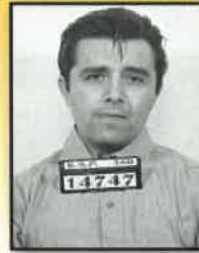
The Kansas State Penitentiary in Lansing is one of the oldest correctional institutions in the country. The Kansas Legislature authorized construction in 1859 and construction began in 1864. KSP was modeled after a prison in Joliet, Illinois. The prison required that all officials live nearby, and the town grew up around the prison.

Executions of state, federal, and military prisoners were performed by hanging at KSP until 1965. Some of the inmates who found their way to the gallows were:

Lowell Andrews, a University of Kansas student, murdered his parents and sister in their Wolcott, KS, family home on November 28, 1958. He was executed in 1962.

Perry Smith and Richard Hickock, on November 15, 1959, murdered four members of the

Herbert Clutter family of Holcomb, KS. Smith and Hickock were hanged in 1965. The story of the Clutter family murders and the executions of Smith and Hickock were the subject of Truman Capote novel, *In Cold Blood*.



*Perry Smith*

George York and James Latham, a 1961 spree killer team, were the most recent individuals executed by the state of Kansas in 1965.

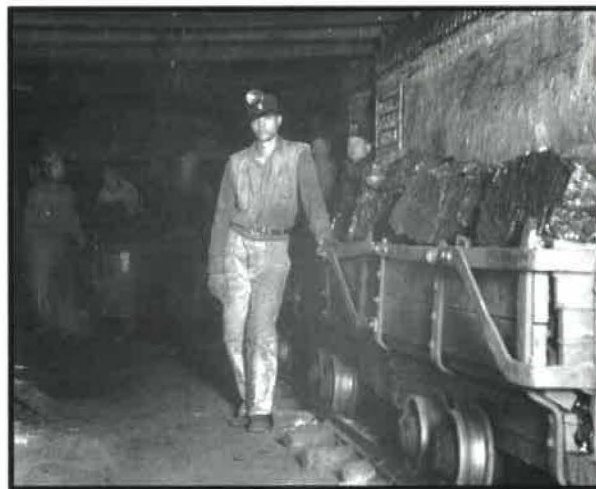
Other villains housed at KSP included Harvey Bailey, cohort of George "Machine Gun" Kelly; and Emmett Dalton, of the Dalton Gang.



*Richard Hickock*

## COAL MINES

The discovery of coal in the area opened up three coal mines: Carr, Brighton and the prison. KSP would mine coal for years using this rich ore to fuel not only the prison, but many of the state buildings as well.



## HISTORY OF DELAWARE TOWNSHIP

Delaware Township includes the towns of Lansing, Progress, Brighton, Delaware, Richardson, Morgantown, Xavier, Wadsworth, and Bain City. It is the history of these communities we celebrate through our collections.

In the 1880s, **L.V. Harkness**, vice-president of Standard Oil, began buying hundreds of acres of land in the area.

He built the Brighton Mine, the Brighton Mine Railroad, and the town of Brighton because he said he saw the promise of a profitable future. The Brighton miners ultimately went out on strike and the owner closed it down. Cattle farms and apple or-



*L.V. Harkness*

chards flourished in the rolling hills that made up the countryside. One of those ranches was the Ryan Brothers Cattle Farm. The four brothers were nationally known for their cattle and the thousands upon thousands of acres of land they owned in California,



*Matthew Ryan*

Texas, Montana and Kansas. Matt Ryan would die a tragic death while riding his horse on the farm. The place of his death is now the site of Lansing High School.

It was said that George C. Richardson was the first child born in Leavenworth. George would be a business success with the Missouri Valley Orchard Company and the Carr Mine.



*George C. Richardson*



## LANSING HISTORICAL SOCIETY

### MUSEUM



115 EAST KANSAS AVENUE, LANSING, KANSAS

## MISSION STATEMENT

Using its historic Atchison, Topeka & Santa Fe Railway depot and collections, the nonprofit Lansing Historical Society and Museum shares the story of Delaware Township through its dedication to collecting, preserving, interpreting and exhibiting authentic historical materials.

The Museum seeks to broaden the historical knowledge of the general public through the use of photographs and artifacts.

### YOU CAN HELP OUR MISSION

The Museum relies on the generous support of members and donors from outside our organization to carry out our mission.

Your support allows us to share our museum and the collections in the present and preserve them for future generations.

### Open Hours

Sunday 1 to 3 p.m.

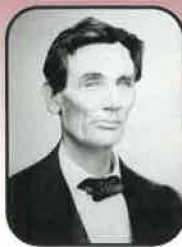
Available for private tours

Website: [LansingKansasHistory.com](http://LansingKansasHistory.com)

email: [info@Lansingkansashistory.com](mailto:info@Lansingkansashistory.com)

## TRAINS AND TROLLEYS

### OUR HERITAGE



At the height of the Civil War, with unity so much on his mind, President Abraham Lincoln sought a way to connect and secure the great expanse of our nation. It came in the form of the transcontinental railroad.



With it came a host of smaller railroads going through towns like Lansing, Maltby, Pope, Ettenson, Delaware, Richardson, Wadsworth, and Bain City. Some of these towns are but a memory today. Lansing saw all of these railroads making their way through Delaware Township, to include the Kansas City-Western Railway Co. From timetables to engineering documents, maps to books, we offer a



wealth of railroad information. The museum is keeping those memories alive with newspaper articles from the day, artifacts, and historical photographs.



# LANSING HISTORICAL SOCIETY & MUSEUM

115 EAST KANSAS AVENUE  
LANSING, KANSAS

Located on the front lawn of the former Kansas State Penitentiary, the Lansing Historical Society and Museum is one of a kind, merging the history of the community through industry – Railroads, Prisons and Mining.

What makes this Museum unique? It is a fully restored 1887 Atchison, Topeka & Santa Fe Railway depot, which played an important part in this country's history with the railroad. More than that, the Museum houses a collection of oddities that can be found nowhere else.