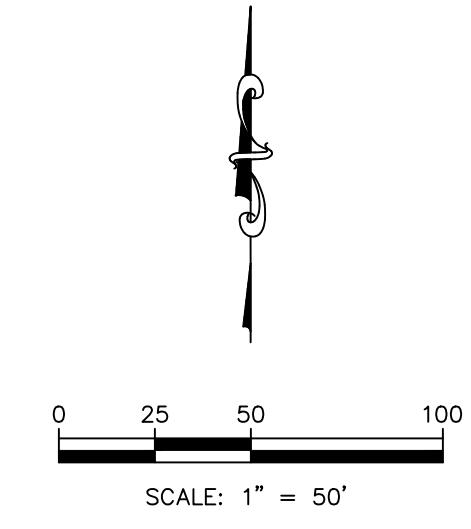
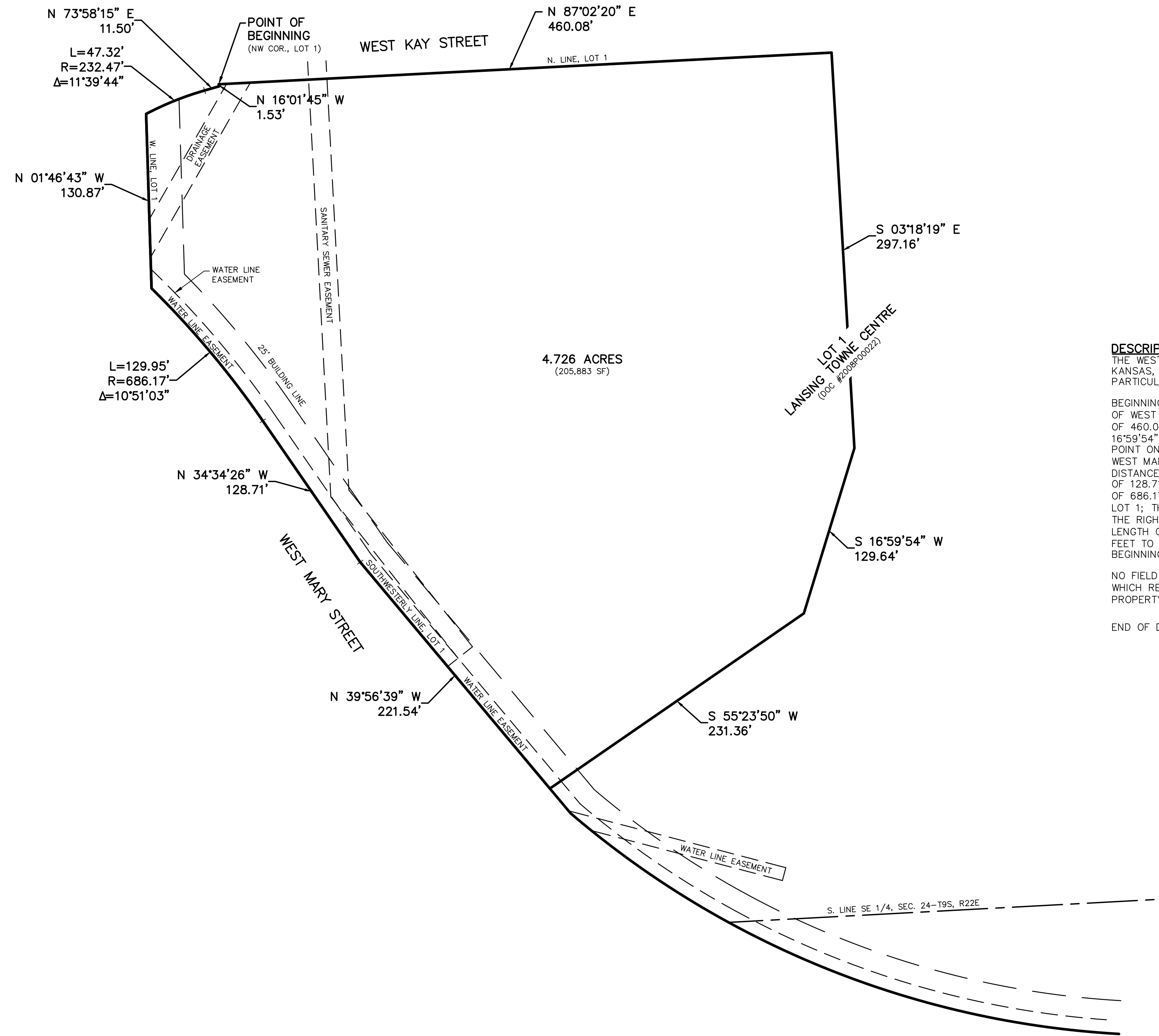


ZONING DESCRIPTION EXHIBIT

LANSING, LEAVENWORTH COUNTY, KANSAS




DESCRIPTION:

THE WESTERN 4.726 ACRES OF LOT 1, LANSING TOWNE CENTRE, A SUBDIVISION IN THE CITY OF LANSING, LEAVENWORTH COUNTY, KANSAS, RECORDED IN DOCUMENT #2008P00022 AT THE REGISTER OF DEEDS OFFICE IN LEAVENWORTH COUNTY, KANSAS, MORE PARTICULARLY DESCRIBED AS FOLLOWS:

BEGINNING AT THE NORTHWESTERN MOST CORNER OF SAID LOT 1, SAID POINT ALSO BEING ON THE SOUTH RIGHT OF WAY LINE OF WEST KAY STREET AS NOW ESTABLISHED; THENCE NORTH 87°02'20" EAST ON THE NORTH LINE OF SAID LOT 1, A DISTANCE OF 460.08 FEET TO A POINT; THENCE SOUTH 03°18'19" EAST, A DISTANCE OF 297.16 FEET TO A POINT; THENCE SOUTH 16°59'54" WEST, A DISTANCE OF 129.64 FEET TO A POINT; THENCE SOUTH 55°23'50" WEST, A DISTANCE OF 231.36 FEET TO A POINT ON THE SOUTHWESTERLY LINE OF SAID LOT 1, SAID POINT ALSO BEING ON THE NORTHEASTERLY RIGHT OF WAY LINE OF WEST MARTY STREET AS NOW ESTABLISHED; THENCE NORTH 39°56'39" WEST ON THE SOUTHWESTERLY LINE OF SAID LOT 1, A DISTANCE OF 221.54 FEET TO A POINT; THENCE NORTH 34°34'26" WEST CONTINUING ON SAID SOUTHWESTERLY LINE, A DISTANCE OF 128.71 FEET TO A POINT; THENCE ON A CURVE TO THE LEFT CONTINUING ON SAID SOUTHWESTERLY LINE, HAVING A RADIUS OF 686.17 FEET, A DELTA ANGLE OF 10°51'03" AND AN ARC LENGTH OF 129.95 FEET TO A POINT ON THE WEST LINE OF SAID LOT 1; THENCE NORTH 01°46'43" WEST ON SAID WEST LINE, A DISTANCE OF 130.87 FEET TO A POINT; THENCE ON A CURVE TO THE RIGHT CONTINUING ON SAID WEST LINE, HAVING A RADIUS OF 232.47 FEET, A DELTA ANGLE OF 11°39'44" AND AN ARC LENGTH OF 47.32 FEET TO A POINT; THENCE NORTH 73°58'15" EAST CONTINUING ON SAID WEST LINE, A DISTANCE OF 11.50 FEET TO A POINT; THENCE NORTH 16°01'45" WEST CONTINUING ON SAID WEST LINE, A DISTANCE OF 1.53 FEET TO THE POINT OF BEGINNING. CONTAINS 205,883 SQUARE FEET OR 4.726 ACRES MORE OR LESS.

NO FIELD WORK WAS PERFORMED AT THIS TIME AND THIS DESCRIPTION DOES NOT MEET THE REQUIREMENTS OF K.S.A. 19-1434, WHICH REQUIRES A SURVEY TO BE FILED WHEN CREATING A NEW PARCEL OR DESCRIPTION FOR THE TRANSFER OF REAL PROPERTY.

END OF DESCRIPTION

		PROJECT NO. C23D1644 DRAWN BY JK CHECKED BY CFN 1644EXBA SHEET 1 OF 1
	14700 WEST 114TH TERRACE LENEXA, KANSAS 66215 PH. (913) 894-5150 FAX (913) 894-5977 kv@kveng.com www.kveng.com	
PROJECT:	PREPARED FOR:	
KAW VALLEY ENGINEERING, INC., IS AUTHORIZED TO OFFER SURVEYING SERVICES BY KANSAS STATE CERTIFICATE OF AUTHORIZATION NO. LS-20. EXPIRES 12/31/24		

\\WMLX-FILES\Projects\C23_1644\C23D1644\1644EXBA.dwg, 3/10/2023 2:28:06 PM, kvch, 1:1