

Reviewed By WW Dept  
 04/05/2022 10:02:38 AM  
 By T Zell

Will need energy dissipation structure

Comment: Is the storm sewer 'over detaining' the entire site, so that you can flow off SW corner?

Comment: It is anticipated that improvement drawings and details will be submitted for review. Specifically street widths / sections. As well as the storm sewer structures, pipes, etc.

Does this drain away from storm sewer?

PROJ. NO.	A21_0758	
DESIGNER	RCP	
DRAWN BY	JT	
CFN	0758STPP	
SHEET	1 OF 2	
REV	A	
REV	DATE	DESCRIPTION
A	3-18-22	CITY REVIEW
		DSN
		DWN
		CHK
		LDO

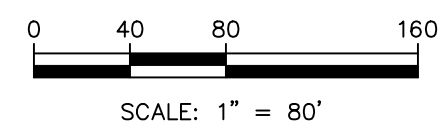
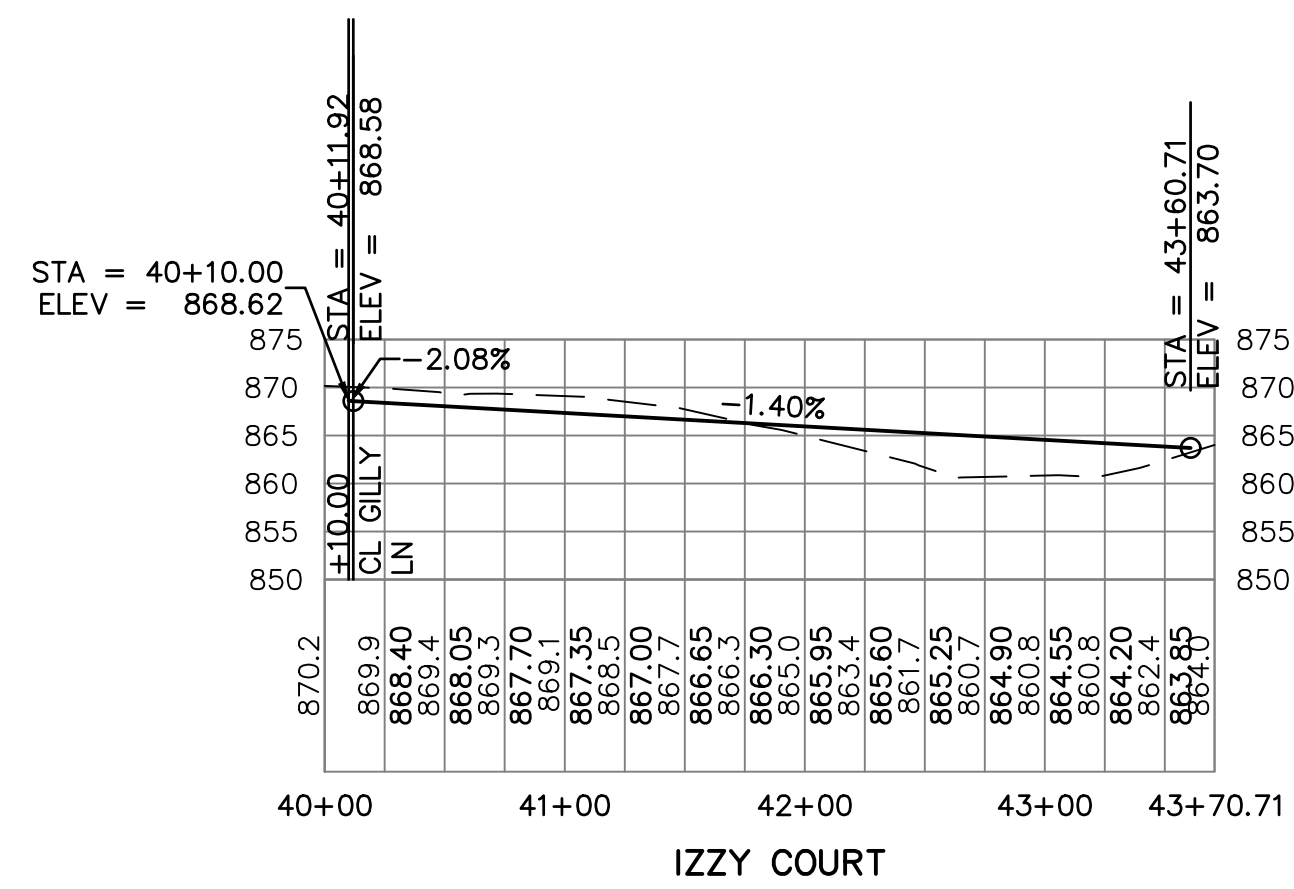
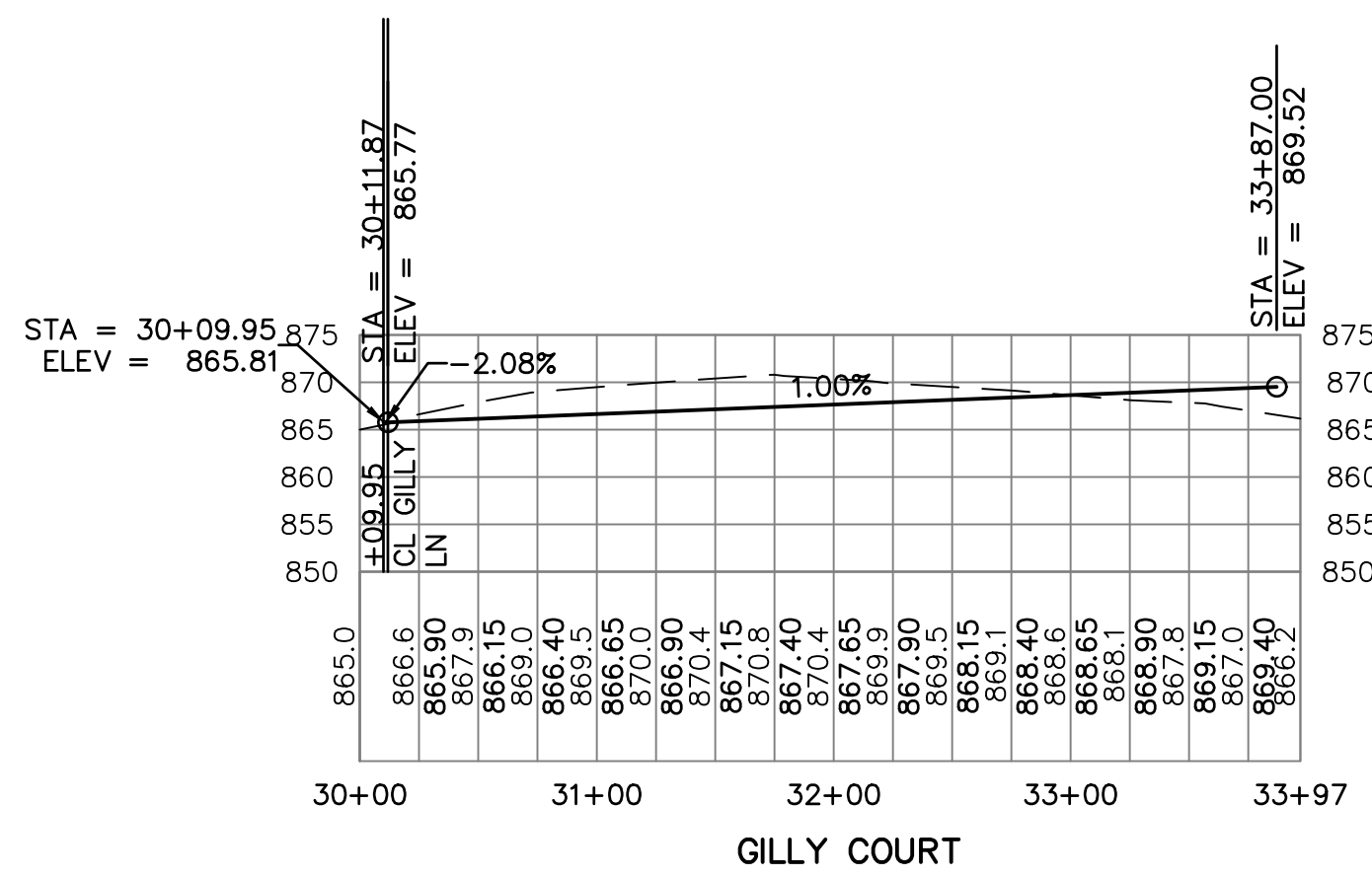
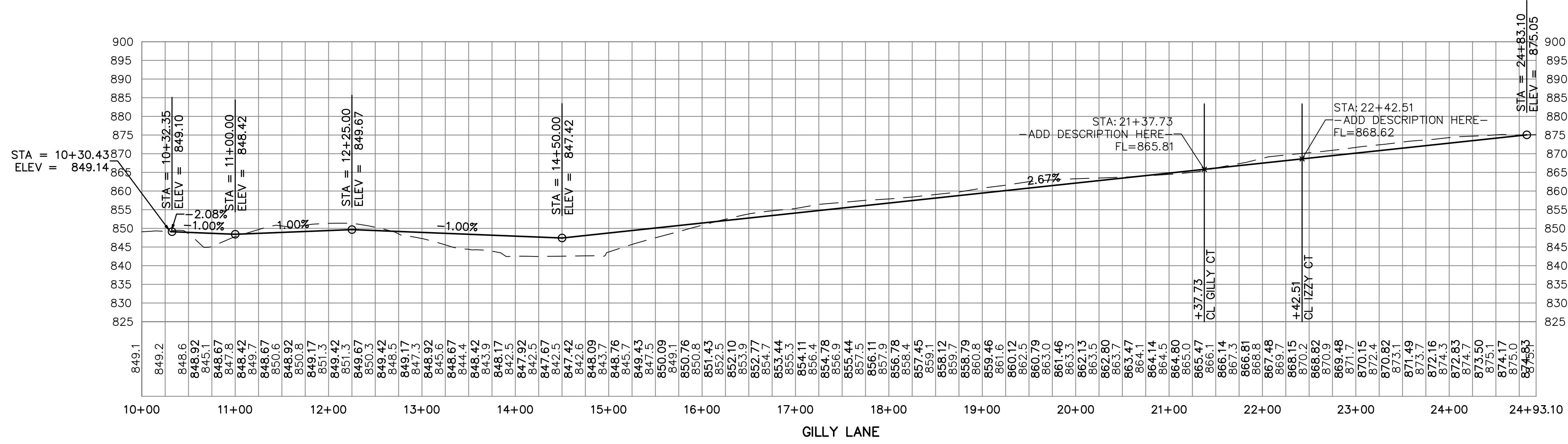
2319 N. JACKSON | P.O. BOX 1304  
 JUNCTION CITY, KANSAS 66441  
 PH. (785) 762-5060 | FAX (785) 762-7744  
 jvalleyeng.com | www.kawvalleyeng.com

**KAW VALLEY ENGINEERING**

KAW VALLEY ENGINEERING, INC. IS AUTHORIZED TO OFFER ENGINEERING SERVICES BY KANSAS STATE CERTIFICATE OF AUTHORIZATION # E-113. EXPIRES 12/31/22

**GILMAN ROAD BUSINESS PARK**  
 13660 E GILMAN ROAD  
 LANSING, KANSAS

**PRELIMINARY STREET PLAN**



SCALE: 1" = 20'

**GILMAN ROAD BUSINESS PARK**  
**13660 E GILMAN ROAD**  
**LANSING, KANSAS**

PROJ. NO.	A21_0758
DESIGNER	RCP
DRAWN BY	JT
CFN	0758STPP
SHEET	2 OF 2

PRELIMINARY STREET PROFILE

**KAW VALLEY ENGINEERING**  
 KAW VALLEY ENGINEERING, INC. IS AUTHORIZED TO OFFER ENGINEERING SERVICES BY KANSAS STATE CERTIFICATE OF AUTHORIZATION # E-113. EXPIRES 12/31/22

2319 N. JACKSON | P.O. BOX 1304  
 JUNCTION CITY, KANSAS 66441  
 PH. (785) 782-5060 | FAX (785) 782-7744  
 jve@kveeng.com | www.kveeng.com

REV	DATE	DESCRIPTION
