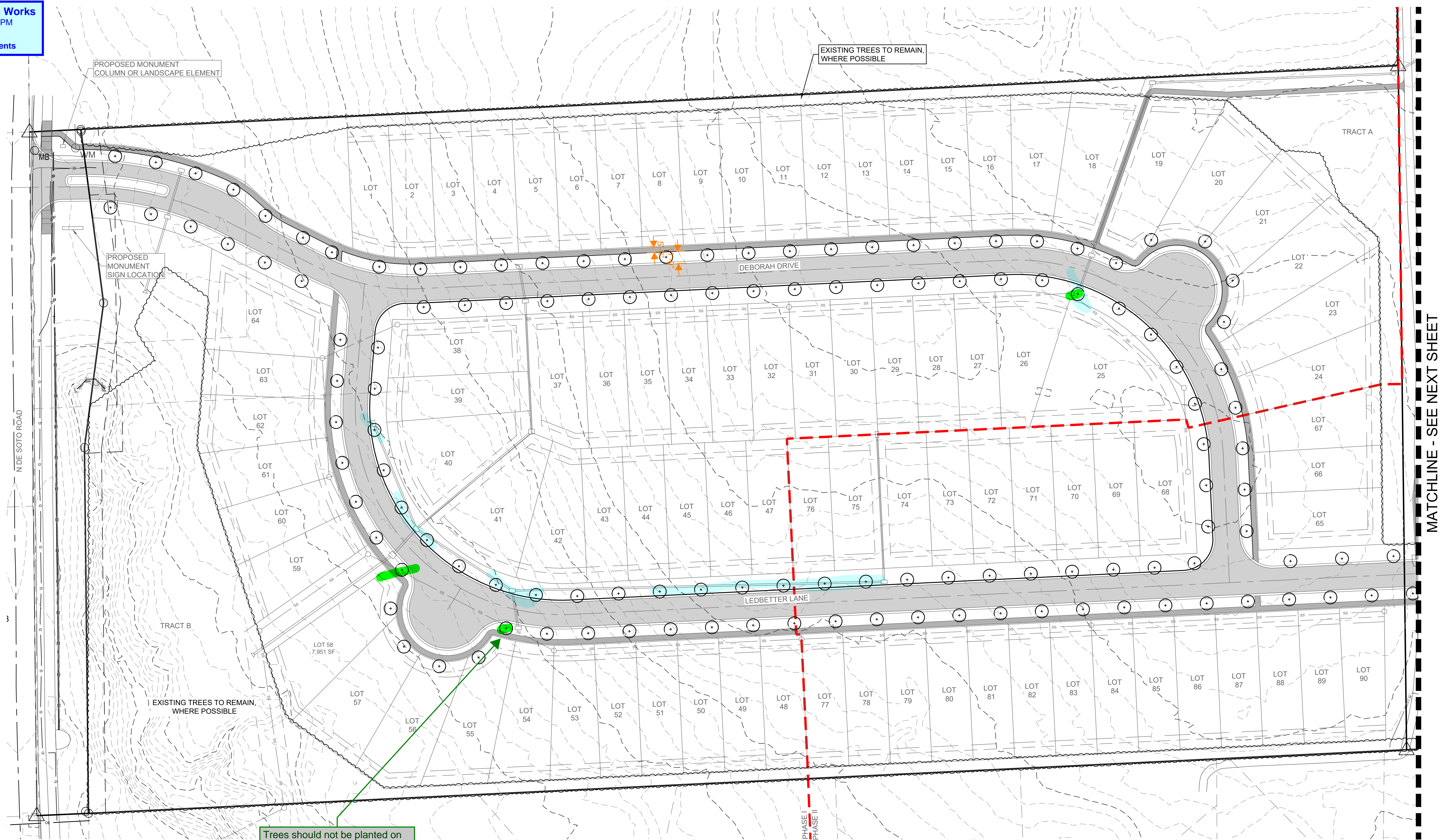


NOTE:
STREET TREE LOCATIONS WILL NEED TO BE ADJUSTED IN
THE FIELD BASED ON UTILITY & DRIVEWAY LOCATIONS.

Reviewed By WW Dept -
See Comments
07/07/2025 3:25:52 PM
By azell

Reviewed by Public Works
07/08/2025 2:18:16 PM
By mspickelmier
See Review Comments



Trees should not be planted on top of or within the easement of any sanitary sewer due to possibility of future public and private property damage. Trees should be located outside of ROW.



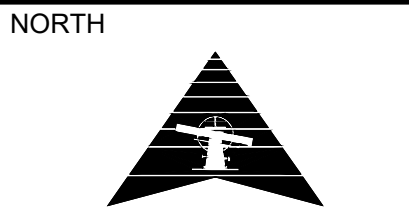
Trees should not be planted on top of storm sewer lines. This will eventually lead to root intrusion and destruction of the pipes/system.

PW Note to Planning Commission:
We may want to have a discussion on our tree requirements. Specifically location within the ROW. We have had numerous problems with trees in the ROW. All of which have lead to premature infrastructure degradation, and significant financial expenditure to remedy.

LEGEND

+ TREE, 40' MAX SPACING

REVISION	DESCRIPTION
000000	



SCALE: 1" = 50'

PROJECT #: 2501-0018
CHECKED BY: BCG
DRAWN BY: BMS

DATE: 07/03/2025

SHEET #
1

TOTAL SHEETS 2

NOTE:
STREET TREE LOCATIONS WILL NEED TO BE ADJUSTED IN
THE FIELD BASED ON UTILITY & DRIVEWAY LOCATIONS.

Trees should not be planted on
top of or within the easement of
any sanitary sewer due to
possibility of future public and
private property damage. Trees
should be located outside of
ROW.

See Tree
Note from
Page 1

MATCHLINE - SEE PREVIOUS SHEET

LEGEND

○ TREE, 40' MAX SPACING



MONROE MANOR

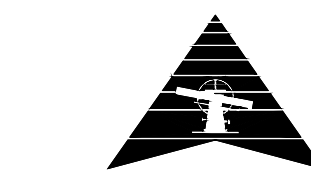
PROGRESS DOCUMENTS - NOT FOR CONSTRUCTION

LANSING, KANSAS

REVISION DESCRIPTION
(DESCRIPTION)

REVISION DATE
000000

NORTH



SCALE: 1" = 50'

PROJECT #: 2501-0018
CHECKED BY: BCG
DRAWN BY: BMS

DATE: 07/03/2025

SHEET #

2

TOTAL SHEETS 2

STREET TREE PLAN