

City Hall & Police Station

Energy Resilience &
Cost Savings

Presented by: Energy & Environment Task Force
5/27/2025



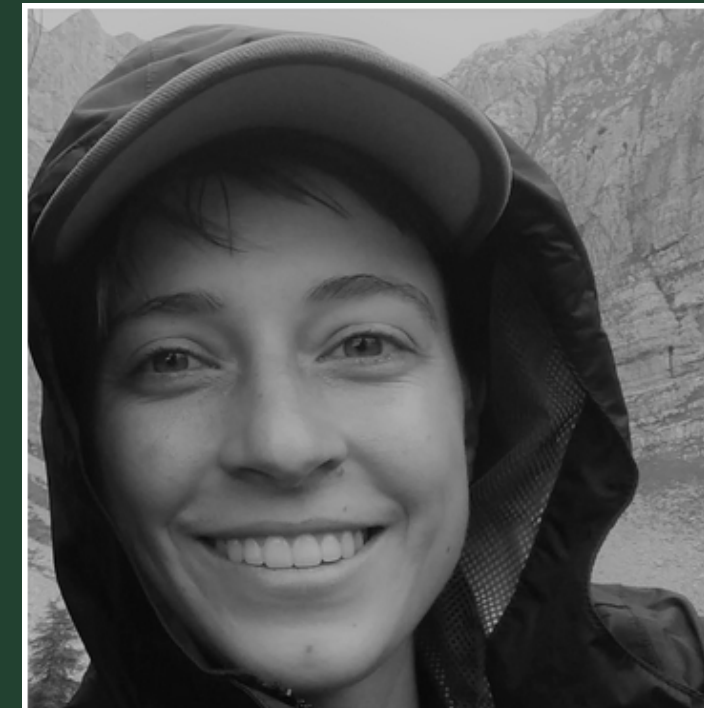
Meet the Energy & Environment Task Force



Louisa Hunkerstorm



Adam Keifenheim



Kara Colovich



Courtney Larson



Randy Craft

E&E's mission is to help the City of Lander **save money, lower energy burden , reduce emissions, and prevent environmental harm** in its operations.

**What we're looking
for from City Council
today.**



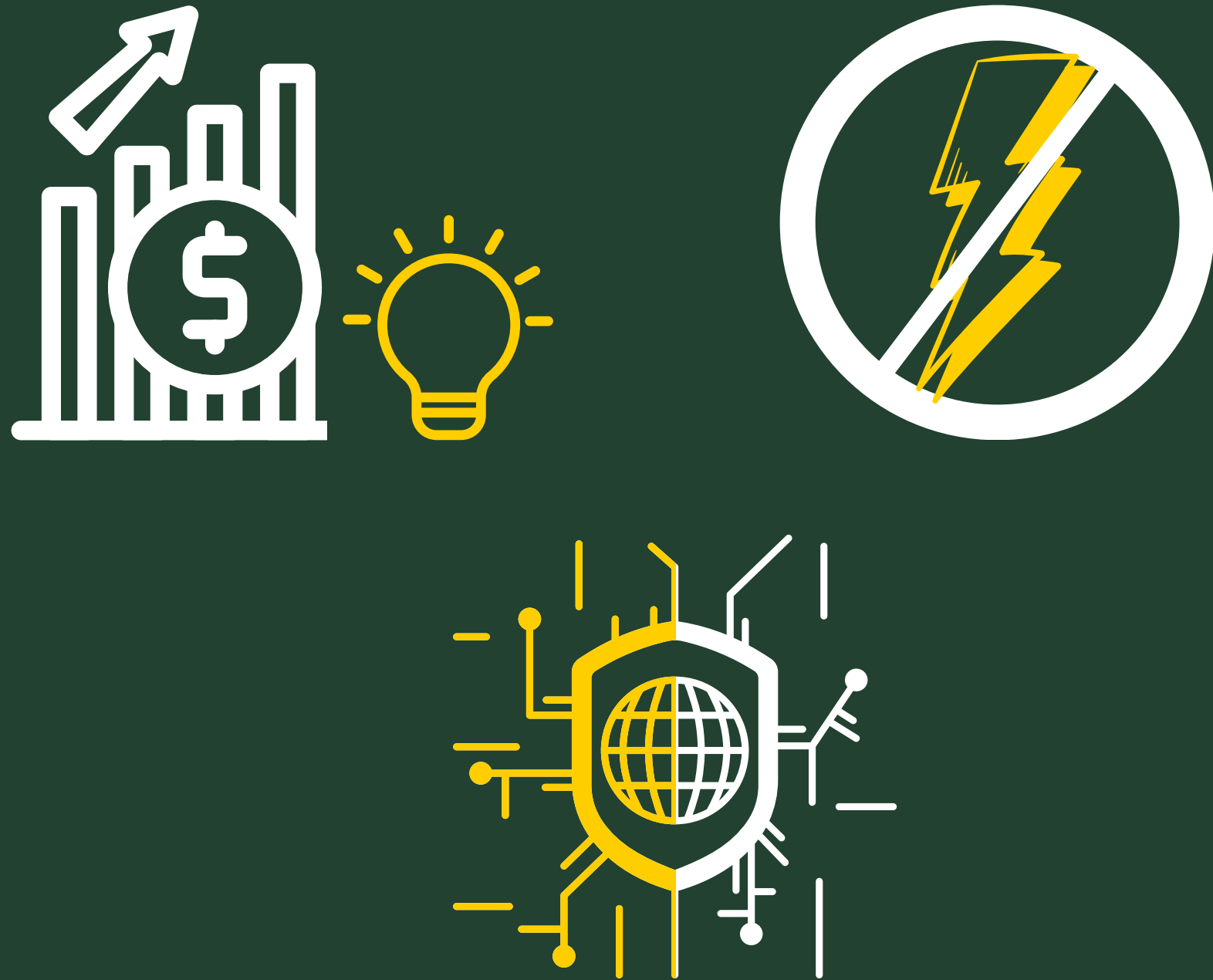
The Opportunity



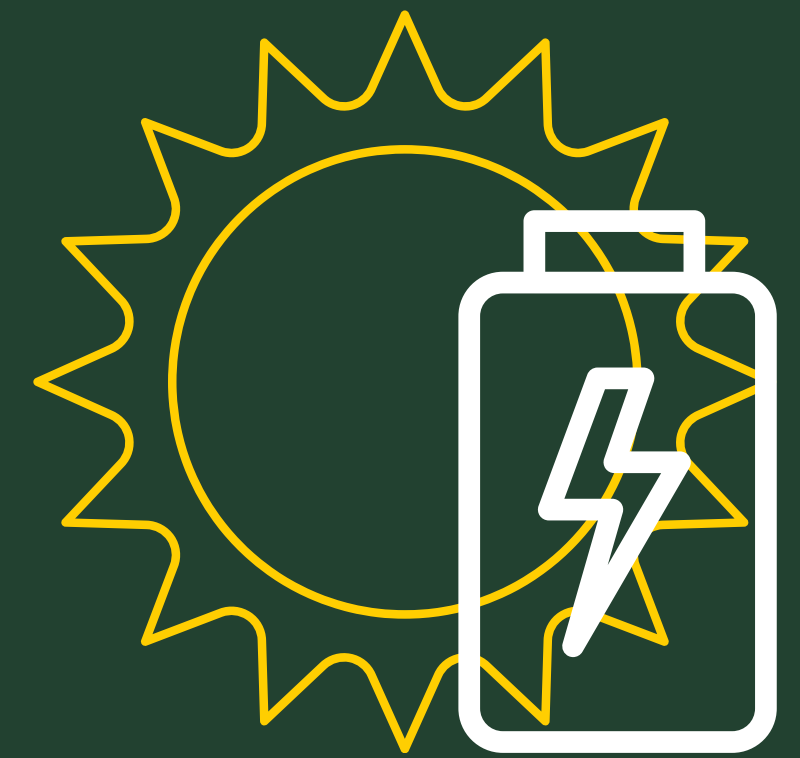
Cohort: "Enhancing Resilience at Critical
Municipal Facilities Through Solar,
Storage, and Microgrids"



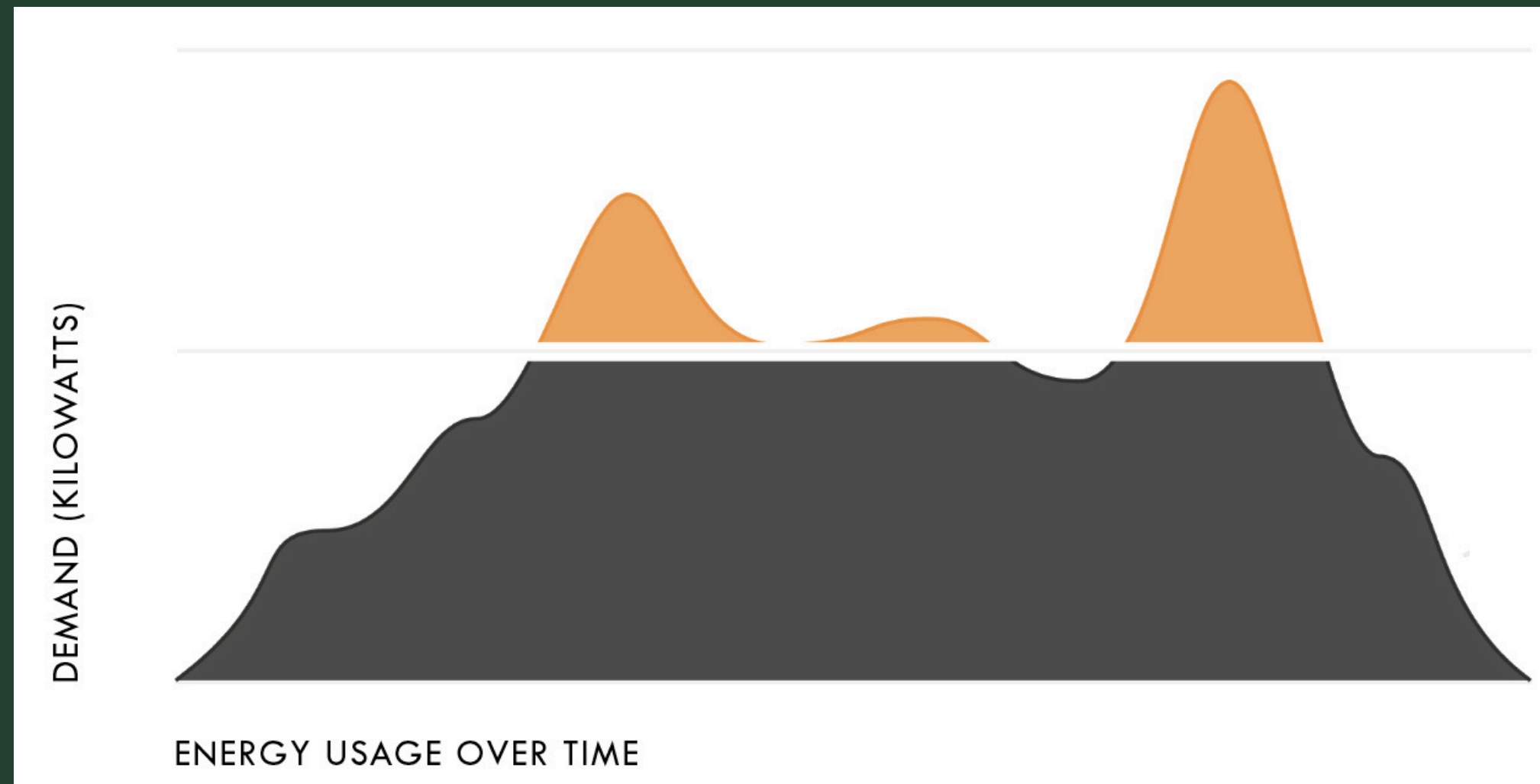
The Problem



The Proposed Solution




Electricity Costs



54%

In 2024, demand charges at City Hall/Police accounted for 54% of that facility's electricity costs – **over \$5,200.**

Electricity Costs



Installing solar
has the added
benefit of energy
monitoring

Demand Charges

Dec. 2023 \$19.44/kW	}	Based on total 2024 kW, this difference of \$1.87 totals \$470
Dec. 2024 \$21.31/kW		

Energy Charges

Dec. 2023 \$0.039/kWh	}	Based on total 2024 kWh, this difference of \$0.008 totals \$804
Dec. 2024 \$0.047/kWh		

Back-up Power

Current System

- 20kW natural gas generator
- The generator is only activated during power outages
- In 2023, this generator failed, highlighting the benefit of redundant back-up systems

Proposed System

- 25kW solar, 15–20kW battery, 20kW natural gas generator
- The battery is active during normal operations and used in conjunction with the generator during power outages
- Batteries last 10–15 years and are recyclable.

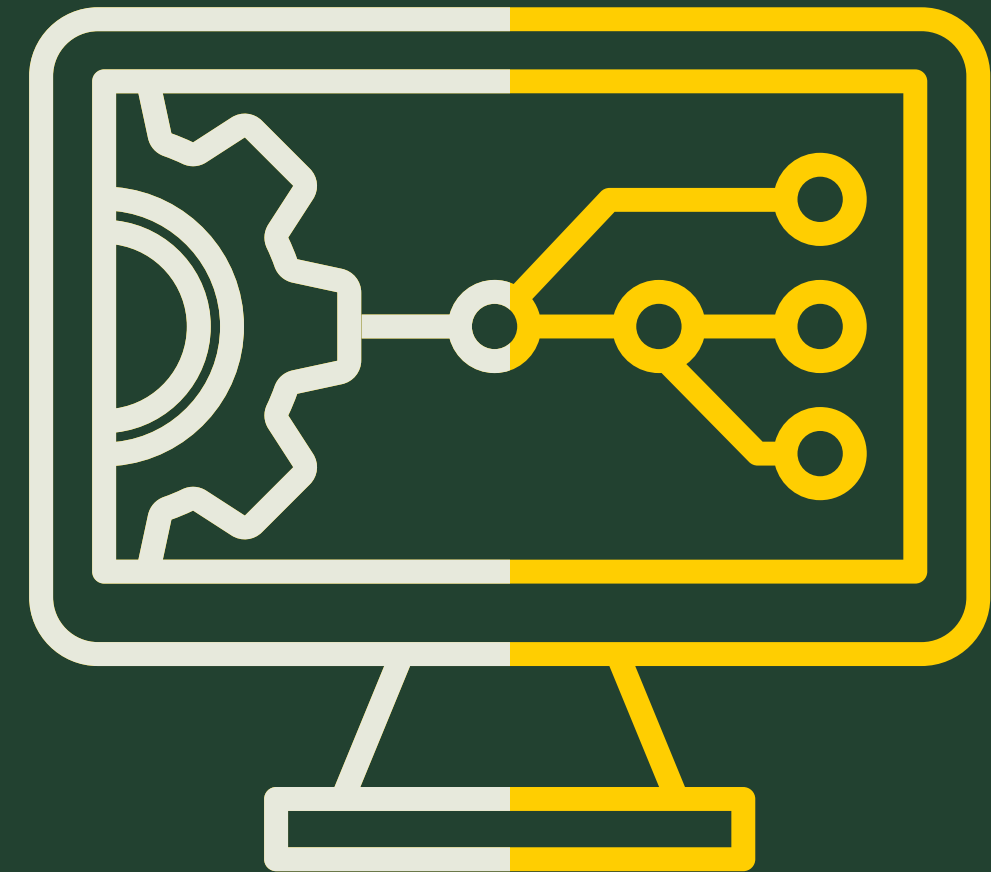
What is being backed up?

Police surveillance equipment
Central internet communications at City Hall
Lights + evacuation signs

Energy Stability Across City Facilities

Many city facilities are connected to the centralized internet control system at City Hall. When City Hall experiences a power bump or power loss, it impacts these other facilities.

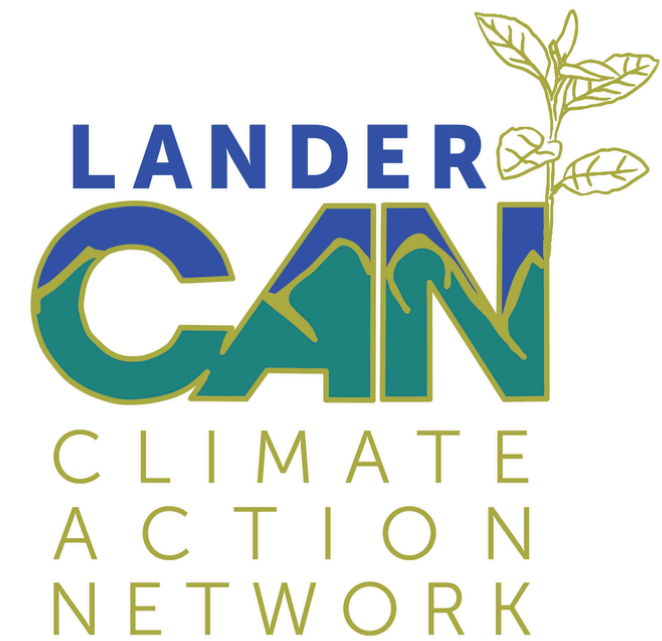
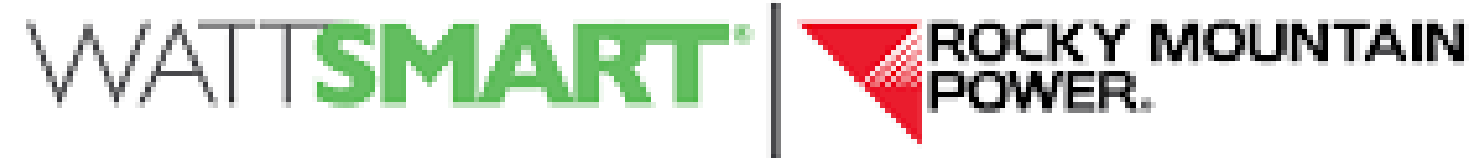
For example, the SCADA system at the Water Treatment Plant.



*Financials will be
provided during the
presentation.*

Financial Contributors

BLUESKYSM
RENEWABLE ENERGY



Furthering the City's Goals

MASTER PLAN

- Infrastructure Goal 3.1: Prepare with **resilient infrastructure**
- Infrastructure Goal 4.1: Establish sustainable practices – **solar energy expansion**

STRATEGIC PLAN

- Pillar 1: Operational excellence
 - Pursue **efficiency** and solutions that **maximize cost effective use of City resources** in the City's physical plant.
- Pillar 2: Maintaining physical infrastructure and core services
 - Continue to **maintain law enforcement services** within the City.
 - Continue **disaster preparedness** efforts to protect City infrastructure
- Pillar 3: Investing in quality of life
 - Pursue **public safety**, ensuring a strong community sense of security from natural, environmental, and other disasters

The image shows the exterior of a brick building with large glass windows. The building has a modern design with a flat roof and a series of windows along the top. The text "Thank You" is overlaid in a large, white, sans-serif font on a dark green rectangular background. Below it, the text "Questions?" is overlaid in a similar font and style on another dark green rectangular background. The building's windows reflect the sky and surrounding environment. A sign on the left window reads "250 LINCOLN" and "POLICE DEPARTMENT". A circular logo for the "CITY OF LANDER WYOMING" is visible on the left window. On the right window, a sign reads "CITY OF LANDER" and "240 LINCOLN". A small "POLICE" sign is also visible on the right window. The building is surrounded by a gravel area and a concrete sidewalk. The sky is clear and blue.

Thank You

Questions?