



2024-2025 City of Lander Infrastructure Projects



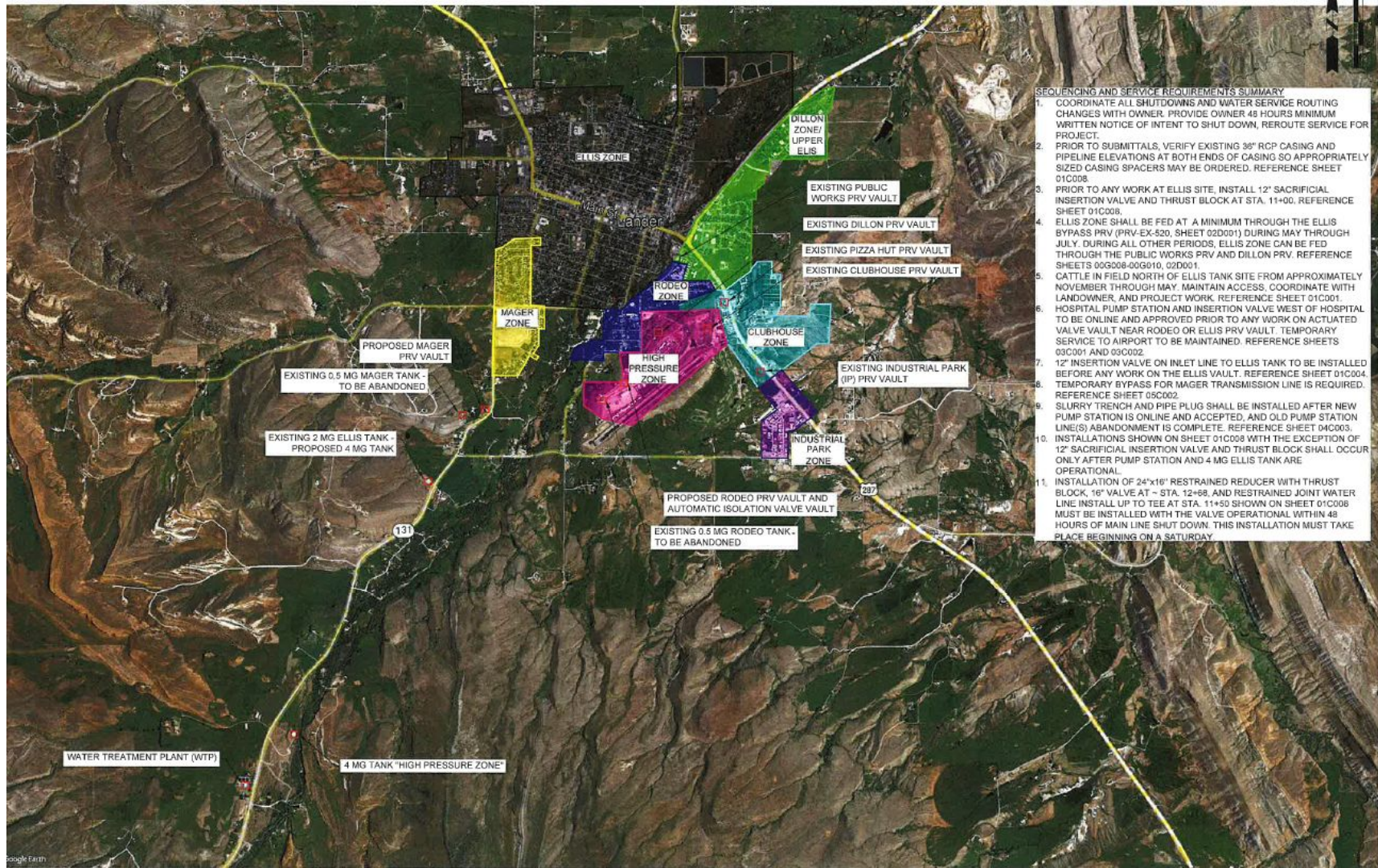
Lander 4 MG Tank and Pumping Station Project





Purpose

Replace three failing tanks and pumping station with a new larger tank and new pumping station.



SEQUENCING AND SERVICE REQUIREMENTS SUMMARY

1. COORDINATE ALL SHUTDOWNS AND WATER SERVICE ROUTING CHANGES WITH OWNER. PROVIDE OWNER 48 HOURS MINIMUM WRITTEN NOTICE OF INTENT TO SHUT DOWN, REROUTE SERVICE FOR PROJECT.
2. PRIOR TO SUBMITTALS, VERIFY EXISTING 36" RCP CASING AND PIPELINE ELEVATIONS AT BOTH ENDS OF CASING SO APPROPRIATELY SIZED CASING SPACERS MAY BE ORDERED. REFERENCE SHEET 01C008
3. PRIOR TO ANY WORK AT ELLIS SITE, INSTALL 12" SACRIFICIAL INSERTION VALVE AND THRUST BLOCK AT STA. 11+00, REFERENCE SHEET 01C008.
4. ELLIS ZONE SHALL BE FED AT A MINIMUM THROUGH THE ELLIS BYPASS PRV (PRV-EX-520, SHEET 02D001) DURING MAY THROUGH JULY. DURING ALL OTHER PERIODS, ELLIS ZONE CAN BE FED THROUGH THE PUBLIC WORKS PRV AND DILLON PRV. REFERENCE SHEETS 00G008-00G010, 02D001.
5. CATTLE IN FIELD NORTH OF ELLIS TANK SITE FROM APPROXIMATELY NOVEMBER THROUGH MAY. MAINTAIN ACCESS. COORDINATE WITH LANDOWNER, AND PROJECT WORK. REFERENCE SHEET 01C001.
6. HOSPITAL PUMP STATION AND INSERTION VALVE WEST OF HOSPITAL TO BE ONLINE AND APPROVED PRIOR TO ANY WORK ON ACTUATED VALVE VAULT NEAR RODEO OR ELLIS PRV VAULT. TEMPORARY SERVICE TO AIRPORT TO BE MAINTAINED. REFERENCE SHEETS 03C001 AND 03C002.
7. 12" INSERTION VALVE ON INLET LINE TO ELLIS TANK TO BE INSTALLED BEFORE ANY WORK ON THE ELLIS VAULT. REFERENCE SHEET 01C004.
8. TEMPORARY BYPASS FOR MAGER TRANSMISSION LINE IS REQUIRED. REFERENCE SHEET 03C002.
9. SLURRY TRENCH AND PIPE PLUG SHALL BE INSTALLED AFTER NEW PUMP STATION IS ONLINE AND ACCEPTED, AND OLD PUMP STATION LINE(S) ABANDONMENT IS COMPLETE. REFERENCE SHEET 04C003.
10. INSTALLATIONS SHOWN ON SHEET 01C008 WITH THE EXCEPTION OF 12" SACRIFICIAL INSERTION VALVE AND THRUST BLOCK SHALL OCCUR ONLY AFTER PUMP STATION AND 4 MG ELLIS TANK ARE OPERATIONAL.
11. INSTALLATION OF 24"x16" RESTRAINED REDUCER WITH THRUST BLOCK, 16" VALVE AT ~ STA. 12+68, AND RESTRAINED JOINT WATER LINE INSTALL UP TO TEE AT STA. 11+50 SHOWN ON SHEET 01C008 MUST BE INSTALLED WITH THE VALVE OPERATIONAL WITHIN 48 HOURS OF MAIN LINE SHUT DOWN. THIS INSTALLATION MUST TAKE PLACE BEGINNING ON A SATURDAY.



HORIZONTAL AND VERTICAL CONTROL POINTS

SYMBOL	POINT	DESCRIPTION	NORTHING	EASTING	ELEV
▲	CP-1	1/2" Rebar, on NW NE of Mount Hope Dr, next to fence just before Cemetery Entrance	847002.371	1978214.222	5532.640
▲	CP-3	1/2" Rebar, SW side of Rodeo Ground Entrance next to fence	844130.909	1973004.195	5570.100
▲	CP-4	1/2" Rebar, Located in field just NE of Hunt Field Airport & Buena Vista Dr, Entrance	844443.178	1974075.358	5055.045
▲	CP-5	Nail in Sidewalk, NE of Sinks Canyon Rd & Squaw Creek Rd, intersection near power pole	845877.814	1968929.059	5443.384
▲	CP-18	1/2" Rebar located behind SageWest Hospital (NE side) on hill	845918.308	1974710.348	5538.624
▲	BARCAP-100	WYDOT Survey Marker, 3.25" Cap, marked ELS10052_2017	841881.046	1967801.074	5498.111

GPS OBSERVATIONS COMPLETED BY HDR. BEARINGS AND DISTANCES ARE GRID VALUES, WYOMING STATE PLANE ZONE 4903, 1983 (2011) DISTANCES ARE IN U.S. SURVEY FOOT, VERTICAL DATUM NAVD 88.



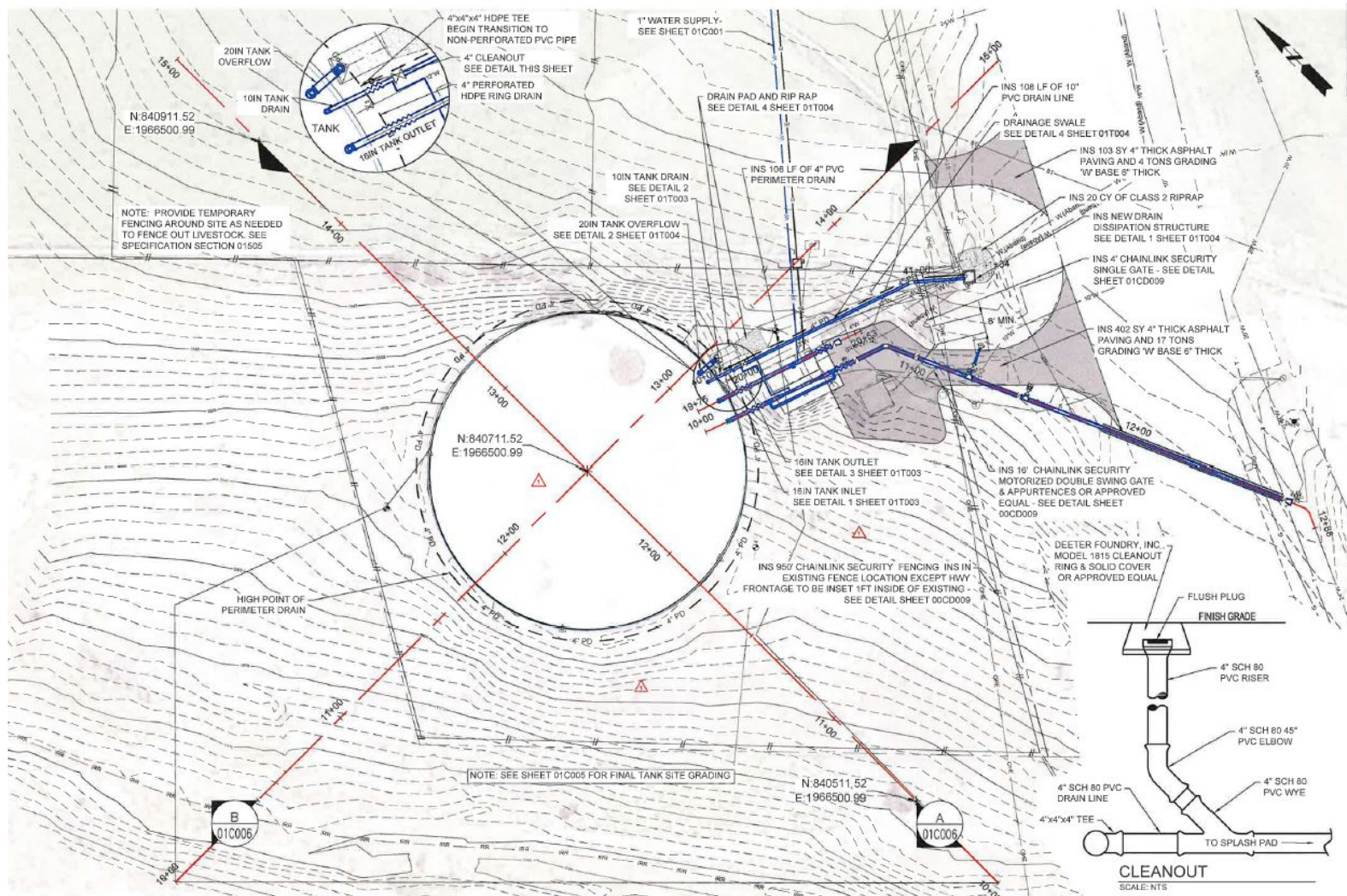
Project Cost

Roughly \$10,000,000 project and funded almost entirely on grants.

Abandoned Mine Lands - 3.5 million

Wyoming Water Development - 6.5 million





FINAL - TANK SITE PLAN





























**BUILT
FOR THE FUTURE**







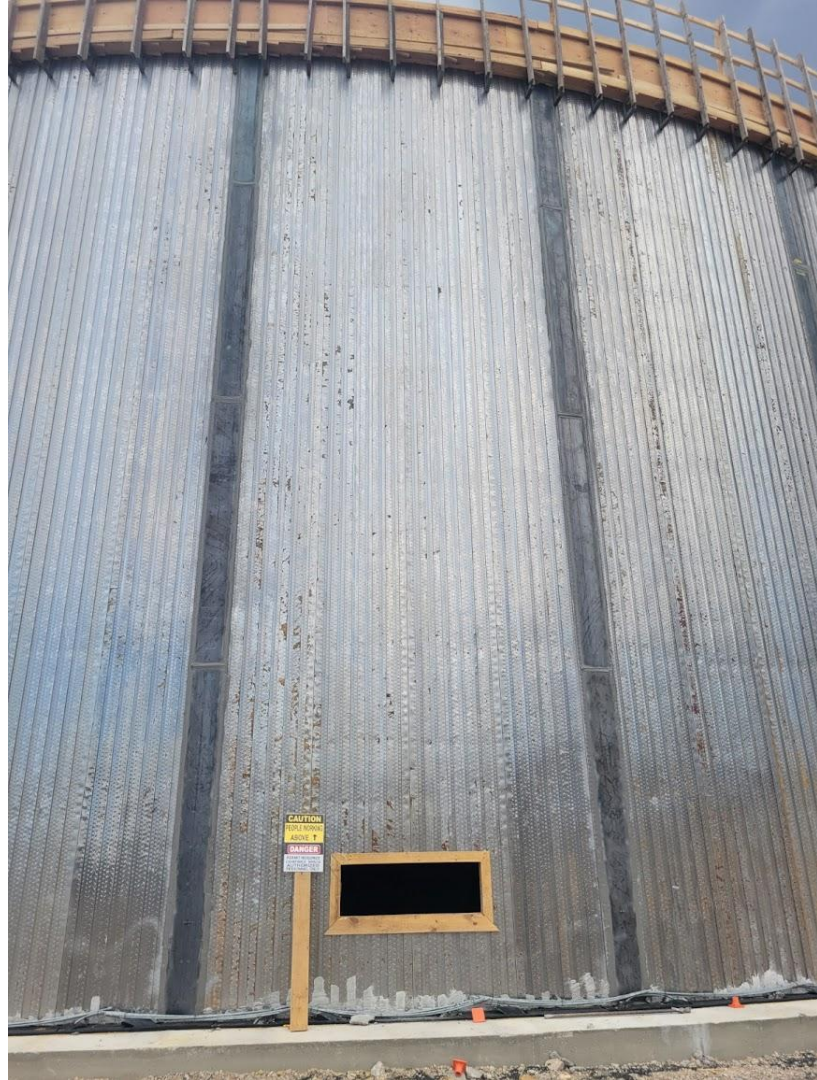
CORE VALUES
SEND EVERYONE HOME SAFE
WE HONOR LIFE
INTEGRITY BEEN AND HERE
GIVE TO GO
THE CHALLENGE
BRING THE BEST
WWW.MANITOWOC.COM







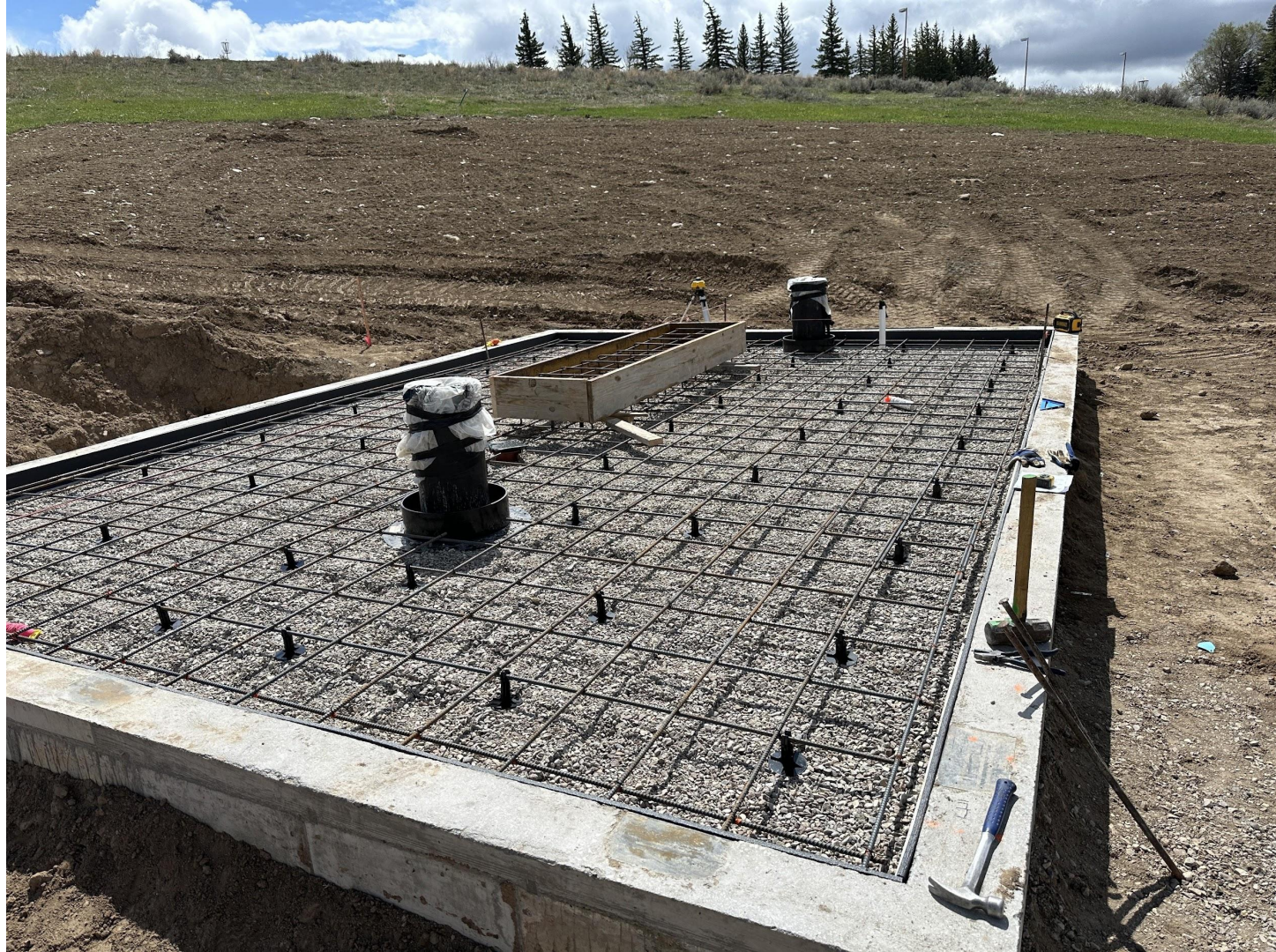


























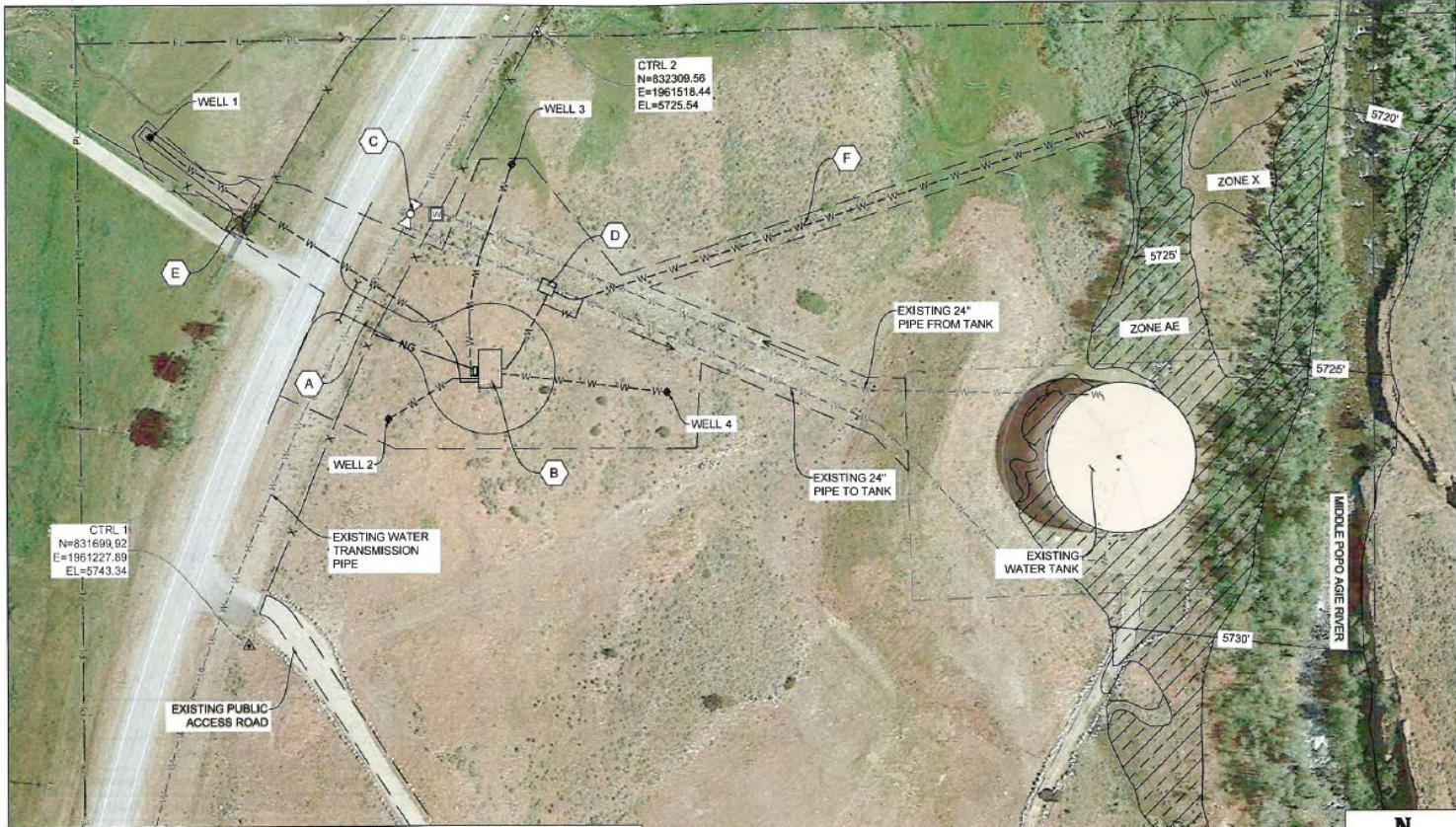






Lander Wells and Transmission Pipeline





LEGEND

- | | | | |
|----------|--|----------|---|
| A | ACCESS ROAD GRADING, SEE SHEET C-3 | D | VAULT OVERVIEW, SEE SHEET C-4 |
| B | BUILDING OVERVIEW, SEE SHEET C-4 | E | ACCESS ROAD TO WELL 1, SEE SHEET PP-1 TYPICAL SECTION |
| C | EXISTING 24" BUTTERFLY VALVE AND PROPOSED 24" BUTTERFLY VALVE, SEE SHEET C-4 | F | 12" DISCHARGE PIPE AND CHANNEL, SEE SHEET PP-6 |

NOTES:

- FEMA FLOOD HAZARD ZONES ARE SHOWN FOR THE MIDDLE POPO AGIE RIVER AND ARE EFFECTIVE AS OF SEPTEMBER 16, 2011. FLOOD DATA IS FROM FEMA'S FLOOD INSURANCE RATE MAP MAP NUMBER 56013C3367E. ZONE AE REPRESENTS AREAS WHERE BASE FLOOD ELEVATION HAS BEEN DETERMINED. BASE FLOOD ELEVATION CONTOURS ARE SHOWN. ZONE X REPRESENTS AREAS OF 0.2% ANNUAL CHANCE FLOOD.



0 50' 100'
SCALE: 1" = 100'
11" x 17" PAPER SIZE

100% DESIGN



Project Cost and Schedule

\$1.5 Million Dollar Cost Estimate Before Covid and \$4 Million Dollar Estimate Post Covid

Project is currently in bidding phase and City will try to secure 67% Grant from Water Development next month.

2024 Award with 2025 Construction



Lander Sidewalk Improvements Proejct - Phase 1



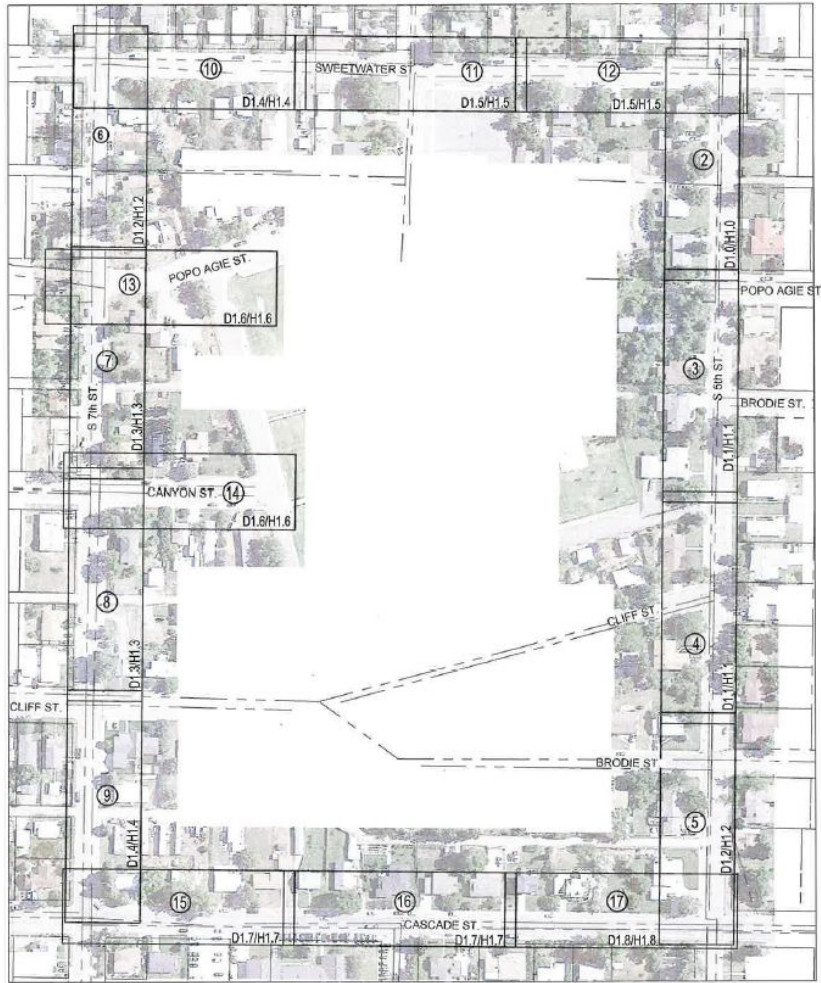


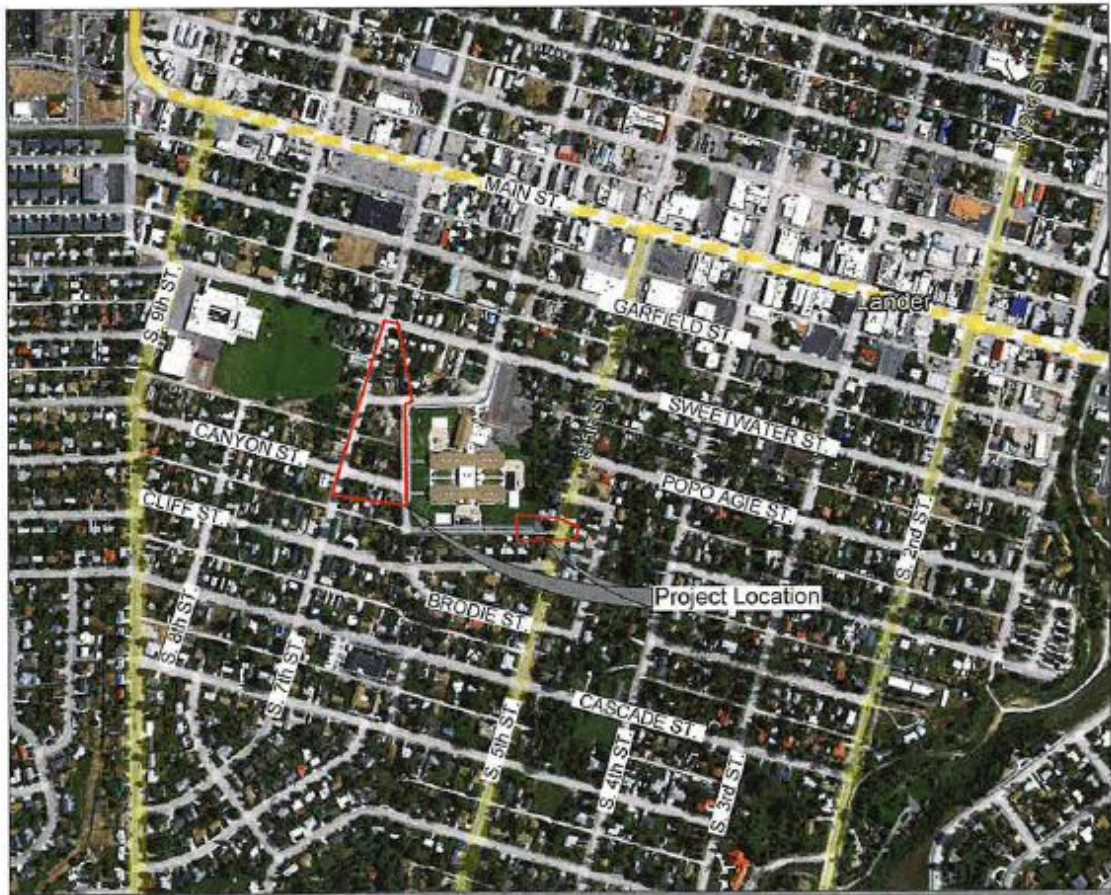
Purpose

Improve Accessibility and Safety Around Gannett Peak Elementary School

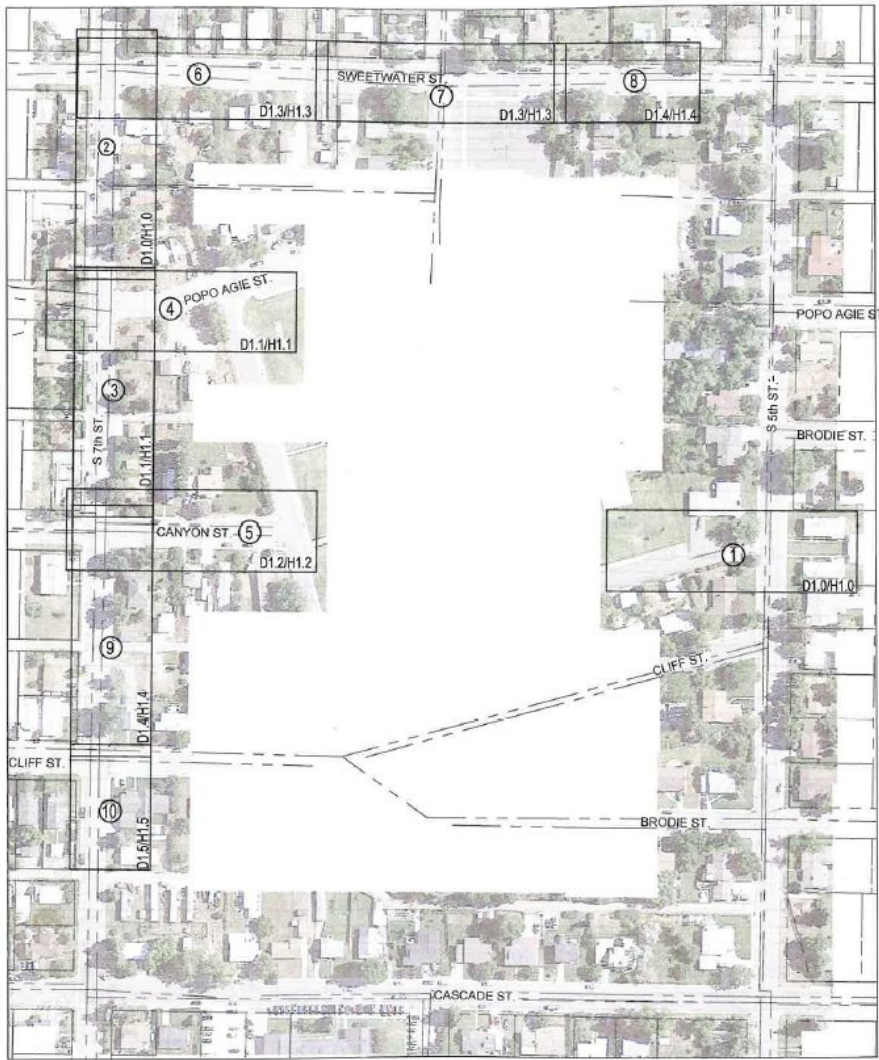


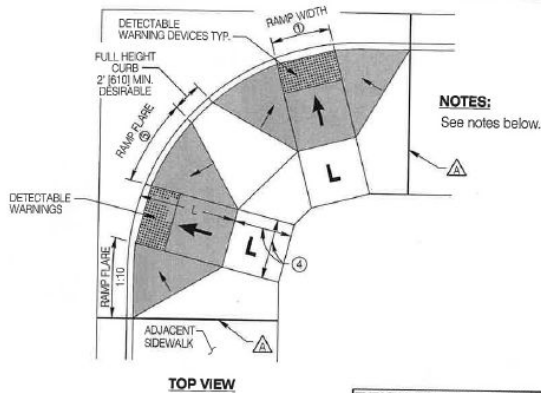
Location Map





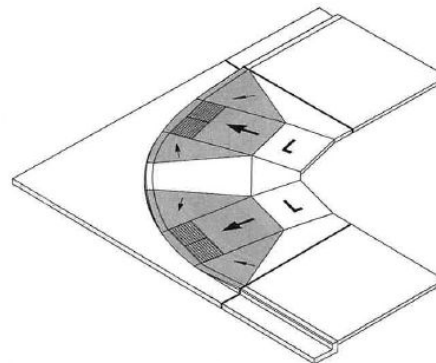
Location Map





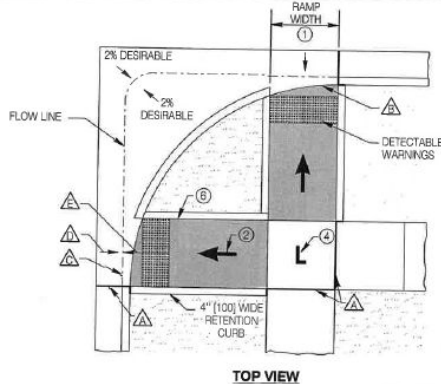
TOP VIEW

NOTES:
See notes below.



ISOMETRIC VIEW

TYPICAL TYPE I (PERPENDICULAR) CORNER RAMPS WITH FLARED RETURNS



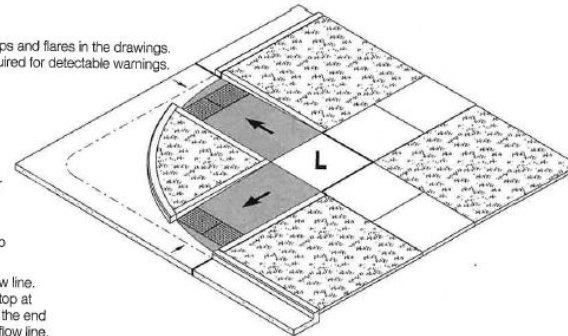
TOP VIEW

NOTES:

Shaded areas are intended to highlight ramps and flares in the drawings. Color contrast from the sidewalk is only required for detectable warnings.

Notes ① through ⑤ - See **[SHEET 3]**

- ⚠ Expansion Joint - See **[SHEET 1]**
- ⚠ Not a grade break line.
- ⚠ Make grade breaks (such as the gutter flow line) perpendicular to the ramps.
- ⚠ Gutter counter slopes should be 2% maximum where possible at curb ramp locations.
- ⚠ Typically ramp run should extend to flow line. However, when specified, ramp may stop at curb line. In those cases, beginning at the end of the ramp, slope downward at 2% to flow line.



ISOMETRIC VIEW

TYPICAL TYPE I (PERPENDICULAR) CORNER RAMPS WITH VERTICAL RETURNS

DATE: 05/09
BY: JSC
CHK: YMB
DRAWING NO: 508-1A

TYPE I PERPENDICULAR RAMPS (CONTINUED)

Note: Units shown in brackets [] are metric and are in millimeters (mm) unless other units are shown.



WYOMING DEPARTMENT
OF
TRANSPORTATION



CONCRETE SIDEWALK AND
ADA ACCESSIBILITY

STANDARD PLAN

STANDARD PLAN NUMBER
608-1B

SHEET 4 of 8

WORTH ENGINEERING SERVICES
Rev. Issued JULY 2016

CITY OF LANDER
SIDEWALK IMPROVEMENT PROJECT -
PHASE I
LANDER, WYOMING

Sheet No. 000000
WYDOT -
STANDARD
DETAILS

Sheet
E1.6

Prepared By: **FDR**

WORTH ENGINEERING INC.
1025 S. 10th St.
P.O. Box 407
Lander, WY 82520

FDR

Scale:

Designed By: JSC
Drawn By: JSC
Design Date: 05/09/08
Checked By: JSC
Contract Job No.: 10028365

Contract No.: 1400-2522
Revision:



Lincoln Street Improvements Project





Purpose

Replace Failing Infrastructure on Lincoln Street

- Water
- Sewer
- Storm
- ADA
- Pavement

PROJECT DRAWINGS FOR LINCOLN STREET IMPROVEMENTS PROJECT

INDEX OF SHEETS

PROJECT VICINITY MAP

Sheet Number	Sheet Title
LINCOLN STREET IMPROVEMENTS	
LINCOLN STREET WATER REPAIR	
COVER	
1	GENERAL NOTES, LEGEND & CONTACTS
2	TYPICAL SECTIONS
3A	SUMMARY TABLES - SHEET 1 OF 4
3B	SUMMARY TABLES - SHEET 2 OF 4
3C	SUMMARY TABLES - SHEET 3 OF 4
3D	SUMMARY TABLES - SHEET 4 OF 4
4	SHEET INDEX MAP
LINCOLN STREET SEWER REPAIR	
P-1	PLAN SHEET - STA 0+00 TO 5+05
P-2	PLAN SHEET - STA 5+05 TO 10+00
P-3	PLAN SHEET - STA 10+00 TO 15+00
P-4	PLAN SHEET - STA 15+00 TO 20+00
P-5	PLAN SHEET - STA 20+00 TO 25+00
P-5B	4TH TO 5TH STREETS
P-6	PLAN SHEET - STA 25+00 TO 30+00
P-7	PLAN SHEET - STA 30+00 TO 35+00
P-7B	LINCOLN STREET - 600 BLOCK
P-8	PLAN SHEET - STA 35+00 TO 40+00
P-8B	735 & 775 LINCOLN STREET
P-8C	775 & 797 LINCOLN STREET
P-9	PLAN SHEET - STA 40+00 TO 45+00
P-10	PLAN SHEET - STA 45+00 TO 50+00
D-1	DETAIL SHEET 1 OF 9

D-2	DETAIL SHEET 2 OF 9
D-3	DETAIL SHEET 3 OF 9
D-4	DETAIL SHEET 4 OF 9
D-5	DETAIL SHEET 5 OF 9
D-6	DETAIL SHEET 6 OF 9
D-7	DETAIL SHEET 7 OF 9
D-8	DETAIL SHEET 8 OF 9
D-9	DETAIL SHEET 9 OF 9
D-10	STORM SEWER DETAILS
D-11	IRRIGATION DETAILS
D-12	IRRIGATION DETAILS
LINCOLN STREET SEWER REPAIR	
G-101	GENERAL NOTES, LEGEND & CONTACTS
C-100	SHEET INDEX MAP
C-101	PLAN & PROFILE - STA 0+00 TO 5+00
C-102	PLAN & PROFILE - STA 5+00 TO 10+00
C-103	PLAN & PROFILE - STA 10+00 TO 15+00
C-104	PLAN & PROFILE - STA 15+00 TO 20+00
C-105	PLAN & PROFILE - STA 20+00 TO 25+00
C-106	PLAN & PROFILE - STA 25+00 TO 30+00
C-107	PLAN & PROFILE - STA 30+00 TO 35+00
C-108	PLAN & PROFILE - STA 35+00 TO 40+00
C-109	PLAN & PROFILE - STA 40+00 TO 45+00
C-110	PLAN & PROFILE - STA 45+00 TO 50+00
C-501	SANITARY SEWER DETAILS - SHEET 1 OF 2
C-502	SANITARY SEWER DETAILS - SHEET 2 OF 2



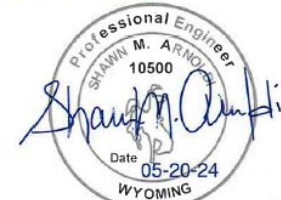
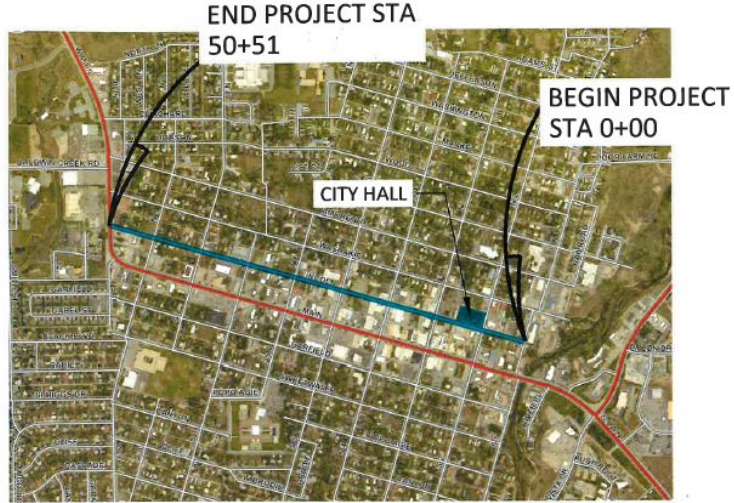
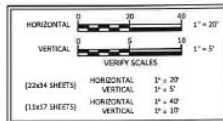
LOCATION MAP



SURVEY CONTROL AND STAKING POINTS	
SC-1	Survey Control Map with Point Code Legend
SV-1	Survey Points Existing - 1st to 3rd Street
SV-2	Survey Points Existing - 3rd to 4th Street
SV-3	Survey Points Exist / Prop - 4th to 6th Street
SV-3B	Survey Points Proposed - 4th to 5th Street
SV-4	Survey Points Exist / Prop - 6th to 8th Street
SV-4B	Survey Points Proposed - 6th to 7th Street
SV-4C	Survey Points Proposed - 7th to 8th Street
SV-4D	Survey Points Proposed - 7th to 8th Street
SV-5	Survey Points Existing - 8th to 10th Street
SV-6	Survey Points Information Tables
SV-7	Survey Points Information Tables
SV-8	Survey Points Information Tables
SV-9	Survey Points Information Tables

OWNER INFORMATION
CITY OF LANDER
240 LINCOLN STREET
LANDER, WYOMING 82520
CONTACT: LANCE HOPKIN
PHONE: 307-332-3956

THIS NOTE APPLIES TO SHEETS P-1 TO P-10
AND SHEETS C-101 TO C-110



BIDDING DOCUMENTS ONLY

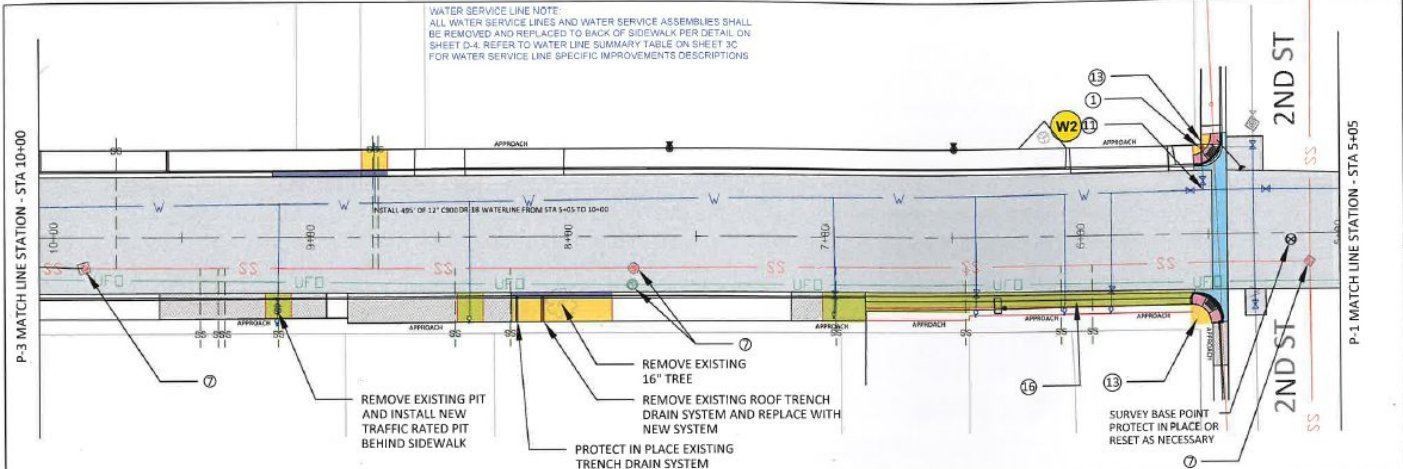
PROJECT ENGINEER



155 N 1st Street, Suite A | Lander, WY 82520
Phone 307-335-5646 | Fax 307-362-6064



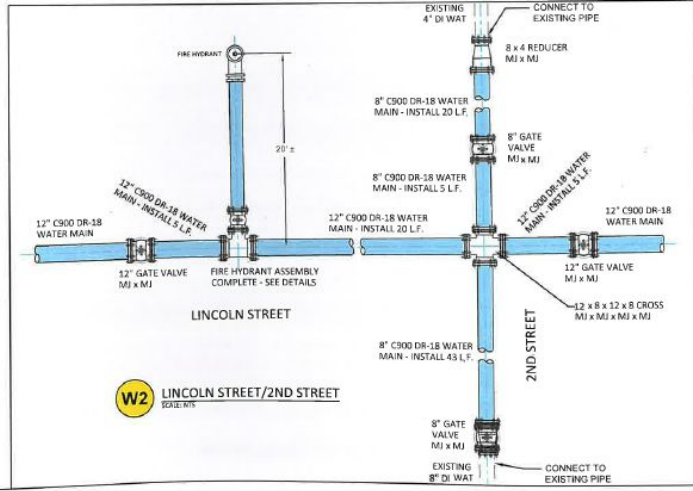
DATE	PLANS PROGRESS / REVISIONS	BY
3-1-2021	50% REVIEW DOCUMENTS	JPL
7-20-2023	SEWER/WATER/RESURFACING - 95% REVIEW DOCUMENTS	SV
11-17-2023	AGENCY REVIEW DOCUMENTS	SMA
05-20-2024	BIDDING DOCUMENTS ONLY	SMA



NOTES:

- ① REMOVE AND REPLACE HYDRANT ASSEMBLY COMPLETE, SEE DETAIL ON SHEET D-4.
- ② LOCATION OF WATER SERVICE UNKNOWN, REMOVE AND REPLACE WATER SERVICE ASSEMBLY COMPLETE TO BACK OF SIDEWALK, SEE DETAIL ON SHEET D-4.
- ③ REMOVE & REPLACE EXISTING CATCH BASIN.
- ④ ALL EXISTING MANHOLES SHALL BE ADJUSTED TO MATCH PROPOSED FINISHED GRADE. INSTALL NEW CONCRETE COLLARS AS NECESSARY. SEE DETAIL SHEET C-501.
- ⑤ REMOVE AND REPLACE 8" WATER LINE AND ALL APPURTENANCES WITH 12", SEE INSET FOR INTERSECTION DETAILS.
- ⑥ REMOVE AND RELOCATE EXISTING SIGN POST, SEE DETAIL ON SHEET D-9.
- ⑦ PROTECT EXISTING SIGN AND / OR POWER POLE. COORDINATE RELOCATIONS WITH CITY OF LANDER.
- ⑧ PROPOSED SANITARY SEWER REALIGNMENT, SEE SHEETS C-101 TO C-110.
- ⑨ REMOVE EXISTING APPROACH AND REPLACE W/ CURB, GUTTER & SIDEWALK, SEE DETAILS ON SHEET D-1.
- ⑩ REPLACE APPROACH TO MATCH EXISTING, SEE VALLEY GUTTER APPROACH DETAIL ON SHEET D-2.
- ⑪ PROTECT & RETAIN EXISTING VALLEY GUTTER APPROACH.
- ⑫ REMOVE ELECTRICAL PULL BOX AND RESET AS REQUIRED.

APPROACH	EXISTING CONCRETE SIDEWALK & APPROACH
	AREA OF PAVEMENT TO BE REPLACED
	CONSTRUCT NEW CONCRETE SIDEWALK, SEE DETAILS ON SHEET D-1
	CONSTRUCT NEW CONCRETE VALLEY GUTTER, SEE DETAILS ON SHEET D-1
	CONSTRUCT NEW HANDICAP RAMP, SEE DETAILS ON SHEET D-3
	CONSTRUCT NEW CONCRETE APPROACH, SEE DETAILS ON SHEET D-2
	CONSTRUCT NEW CONCRETE HIGH BACK CURBS AND GUTTER, SEE DETAILS ON SHEET D-1



ENGINEERING - SURVEYING - PLANNING

1518 9th Street, Suite A | Rock Springs, WY 83001
Phone: 307-362-4066 | Fax: 307-362-6004

CITY OF LANDER
240 LINCOLN STREET
LANDER, WY 82520

REV: -

DATE: 05-03-2024

CITY OF LANDER
**LINCOLN STREET WATER REPAIR
STREET RECONSTRUCTION PROJECT**

PROJECT NO.: 17063

DRAWN BY: JPL

REVIEWED BY: SMA

CITY OF LANDER
PLAN SHEET - STA #05 TO 10+00

SHEET NO.
P-2



Cost and Contractor

Eng Estimate of 5 Million

Bid of 7.2 Million

Awarded to High Country This Month

Additional ARPA Funds?

2024/2025 Construction



City Master Plan Update



AYRES
PLANNING • DEVELOPMENT



2024 MASTER PLAN UPDATE AND PARKS AND RECREATION PLAN

THURSDAY, JULY 18

2:00-4:00 PM

DROP-IN SESSION | COMMUNITY CENTER
PRESENTATION AT 3 PM

5:00 PM

BOOTH | LANDER PRESENTS AT CITY PARK

FRIDAY, JULY 19

7:30-10:30 AM

OPEN HOUSE | LANDER BAKE SHOP

7:30-10:30 AM

OPEN HOUSE | LINCOLN STREET BAKERY

11:00 AM-1:00 PM

OPEN HOUSE | LANDER SENIOR CENTER

2:00-4:00 PM

DROP-IN SESSION | LANDER LIBRARY
PRESENTATION AT 3 PM

SATURDAY, JULY 20

11:00 AM-4:00 PM BOOTH | PIG ROAST AT CITY PARK



**WE WANT TO HEAR FROM YOU!
THIS IS AN OPPORTUNITY TO GET
INVOLVED AND SHAPE OUR
COMMUNITY'S FUTURE!**

UNABLE TO ATTEND?
CONTACT AEVEN@LANDERWYOMING.ORG
332-2870 X113



Upcoming Projects





Additional 44 Million in State Land and Investments Board Loan With Forgiveness

- Buena Vista
- Cascade and South 6th Street
- Sewer Lagoon Improvements
- Fremont Street Sewer
- 5th Street
- Baldwin Creek
- McFarlane Drive
- First Street
- Dillion Vista Subdivision

Questions??

