

EXHIBIT "A"

Tract No. 1 – Soccer Fields - #1

A tract of land located in the SE1/4, Section 12, Township 33 North, Range 100 West., 6th PM, Fremont County, Wyoming more particularly described as follows:

Beginning at Corner No. 1, which corner bears N18°28'07"E, a distance of 686.88 feet from the E1/16 corner of said section 12 common to said section 12 and section 13; thence proceed N00°45'00"W, a distance of 489.11 feet to corner No. 2; thence proceed N89°19'00"E, a distance of 235.00 feet to corner No. 3; thence proceed S00°45'00"E, a distance of 423.46 feet to corner No. 4 being on the property line; thence proceed S89°19'32"W, a distance of 32.49 feet to corner No. 5; thence proceed S31°33'51"W, a distance of 77.62 feet to corner No. 6; thence proceed to S89°19'00"W, a distance of 161.01 feet, more or less, to Corner No. 1, being the Point of Beginning of this description. Said tract contains 2.56 acres, more or less.

Tract No. 2 – LAND KNOWN AS NORTH PARK

Beginning at the Center one-quarter corner of Section 7, T. 33N., R. 99 W., 6th P.M., Fremont County, Wyoming, proceed S. 01°02' East along the east boundary of the NE1/4SW1/4 of Section 7, a distance of 1267 feet; thence proceed S. 89°48' W. on a line parallel to the North Boundary of said NE1/4SW1/4, a distance of 688 feet, plus or minus, to the point of beginning of this land description as Corner No. 1; thence proceed N.01°02' W. on a line parallel to the East Boundary of said NE1/4SW1/4 a distance of 797 feet plus or minus which point is also S. 01°02 E. 470 feet from the North Boundary of said NE1/4SW1/4 as Corner No. 2; thence proceed N. 85° West 648 feet plus or minus to an intersection with the West Boundary of said NE1/4SW1/4 at a point S. 00°44' E. and 413 feet from the Northwest corner of said NE1/4SW1/4 as Corner No. 3; thence proceed S. 00°44' E. along said West Boundary line of NE1/4SW1/4 a distance of 854 feet plus or minus as Corner No. 4; thence proceed North 89°48' E. a distance of 640 feet plus or minus to Corner No. 1, the corner of beginning of the land description.

Tract No. 3 – PARK AND RECREATIONAL GOUND – SOFTBALL FIELDS, DOG PARK

A tract of land to be leased from the Fremont County School District Number One in the W1/2SE1/4 of Section 12, Township 33 North, Range 100 West, 6th P.M., more particularly described as follows:

Beginning at Corner No. 1 which corner is on the West line of the SW1/2SE1/4 and bears N. 0° 58.7' W. a distance of 1119.0 feet from the South one-quarter corner of said section 12; thence proceed N. 0°58.7'W. along the West line of the SE1/4 a distance of 587.1 feet, to Corner No. 2; thence proceed S. 85° 11' E. a distance of 1134.6 feet to Corner No. 3; thence proceed S. 1° 0.8 E. a distance of 469.5 feet to Corner No. 4; thence proceed S. 88° 52' W. a distance of 1129.1 feet, more or less, to Corner No. 1, the point of beginning hereinbefore mentioned.

This tract contains 13.69 more or less,

EXHIBIT "A"

Tract No. 4 – DIRT BIKE PARK

A tract of land in the SE1/4SE1/4 of Section 12, Township 33 North, Range 100 West, 6th PM, more particularly described as follows:

Beginning at point No. 1, which point bears N85°06'56W a distance of 627.64 feet from the Southeast corner of said Section 12; thence proceed:

N88°56'10"W a distance of 295.94 feet to point no. 2

N00°28'05"W a distance of 461 feet to point no. 3

N89°15'31"E a distance of 92.07 feet to point no. 4

S22°12'45"E a distance of 74.22 feet to point no. 5

S34°42'18"E a distance of 50.60 feet to point no. 6

S10°03'12"E a distance of 112.63 feet to point no. 7

S04°54'30"E a distance of 158.70 feet to point no. 8

N67°43'18"E a distance of 72.04 feet to point no. 9

S23°43'18"E a distance of 126.33 feet, more or less, to point no. 1, the point of beginning.

Described tract encompasses an area of 1.89 acres, more or less.

Tract No. 5 – Soccer Fields - #2

A tract of land located in the SE1/4 of Section 12, Township 33 North, Range 100 West, 6th P.M., Fremont County, Wyoming, more particularly described as follows: Beginning at corner No. 1, which corner bears N06°57'48"E, a distance of 1148.19 feet from the E1/16 corner common to said Section 12 and Section 13: thence proceed S89°19'00"W, a distance of 328.01 feet to corner No. 2; thence proceed N00°45'00"W, a distance of 451.75 feet, more or less, to corner No. 3, a point on the northerly boundary of the Fremont County School District No. 1 property; thence along the said property boundary S85°01'24"E, a distance of 323.62 feet to corner No. 4; thence proceed S01°34'10"E, a distance of 419.88 feet to Corner No. 1, being the point of beginning of this description; said tract contains 3.25 acres, more or less.

Z:\PROJECTS\FREMONT COUNTY SD HQ\1\PCSDT_SP.dwg SAVED DATE 2019-10-31 14:59



WHS
ENGINEERING > SURVEYING > PLANNING
155 N 1st, STE A
LANDER, WY 82520
307-334-5646

Drawn By: DAF
Checked By: BM
Job #:
Date: 5/13/19
Revision:
Date: 10/31/19
Explanation:

TRACT OF LAND
LANDER VALLEY
HIGH SCHOOL
SECTION 12,
T33N, R100W, 6th PM
FREMONT COUNTY, WY

FREMONT COUNTY
SCHOOL DISTRICT
No. 1
615 Popo Agie St.
Lander, WY
82520

Z:\PROJECTS\FREMONT COUNTY SD NO.1\FCSD1_SP.dwg SAVED DATE 2019-10-31 14:58

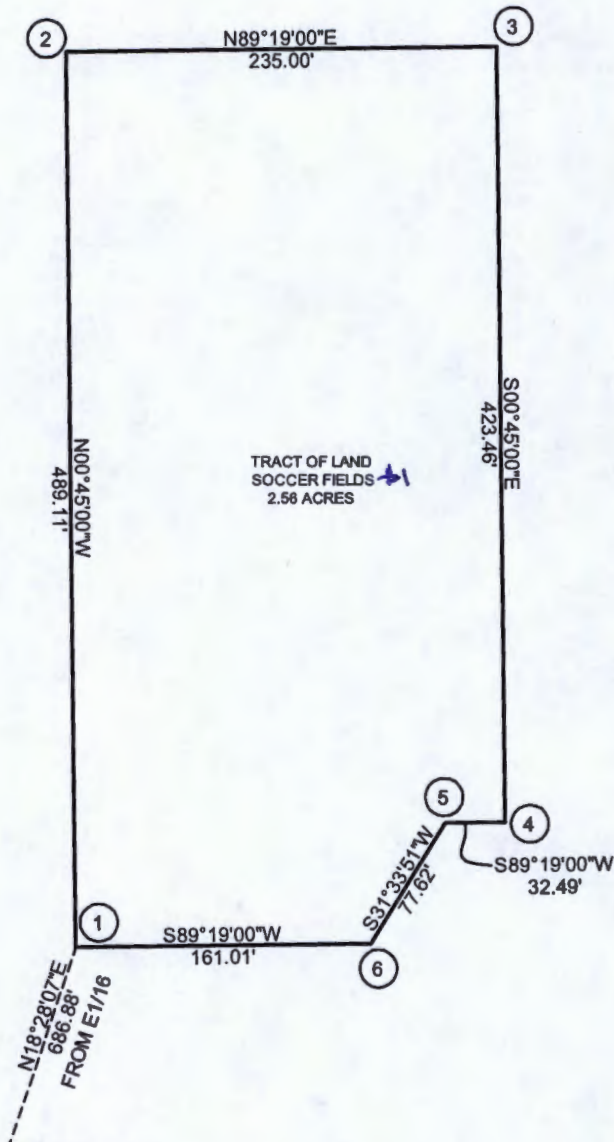
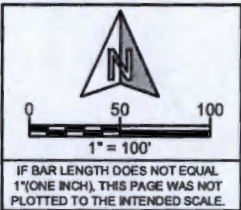


WHS
ENGINEERING > SURVEYING > PLANNING
155 N 1st, STE A
LANDER, WY 82520
307-334-5646

Drawn By: DAF
Checked By: BM
Job #:
Date: 5/13/19
Revision:
Date: 10/31/19
Explanation:

TRACT OF LAND
LANDER VALLEY
HIGH SCHOOL
SECTION 12,
T33N, R100W, 6th PM
FREMONT COUNTY, WY

FREMONT COUNTY
SCHOOL DISTRICT
No. 1
615 Popo Agie St.
Lander, WY
82520



LEGAL DESCRIPTION:

A Tract of Land located in the SE1/4SE1/4, Section 12, Township 33 North, Range 100 West., 6th PM, Fremont County, Wyoming, more particularly described as follows:

Beginning at Corner No. 1, which corner bears N18°28'07"E, a distance of 686.88 feet from the E1/16 Corner of said Section 12 common to Said Section 12 and Section 13;

Thence proceed N00°45'00"W, a distance of 489.11 feet to corner No. 2;

Thence proceed N89°19'00"E, a distance of 235.00 feet to Corner No. 3;


Thence proceed S00°45'00"E, a distance of 423.46 feet to Corner No. 4 being on the property line;

Thence proceed S89°19'32"W, a distance of 32.49 feet to Corner No. 5;

Thence proceed S31°33'51"W, a distance of 77.62 feet to Corner No. 6;

Thence proceed to S89°19'00"W, a distance of 161.01 feet, more or less, to Corner No. 1, being the Point of Beginning of this description;

Said Tract contains 2.56 acres, more or less.



WHS

ENGINEERING > SURVEYING > PLANNING

155 N 1st, STE A

LANDER, WY 82520

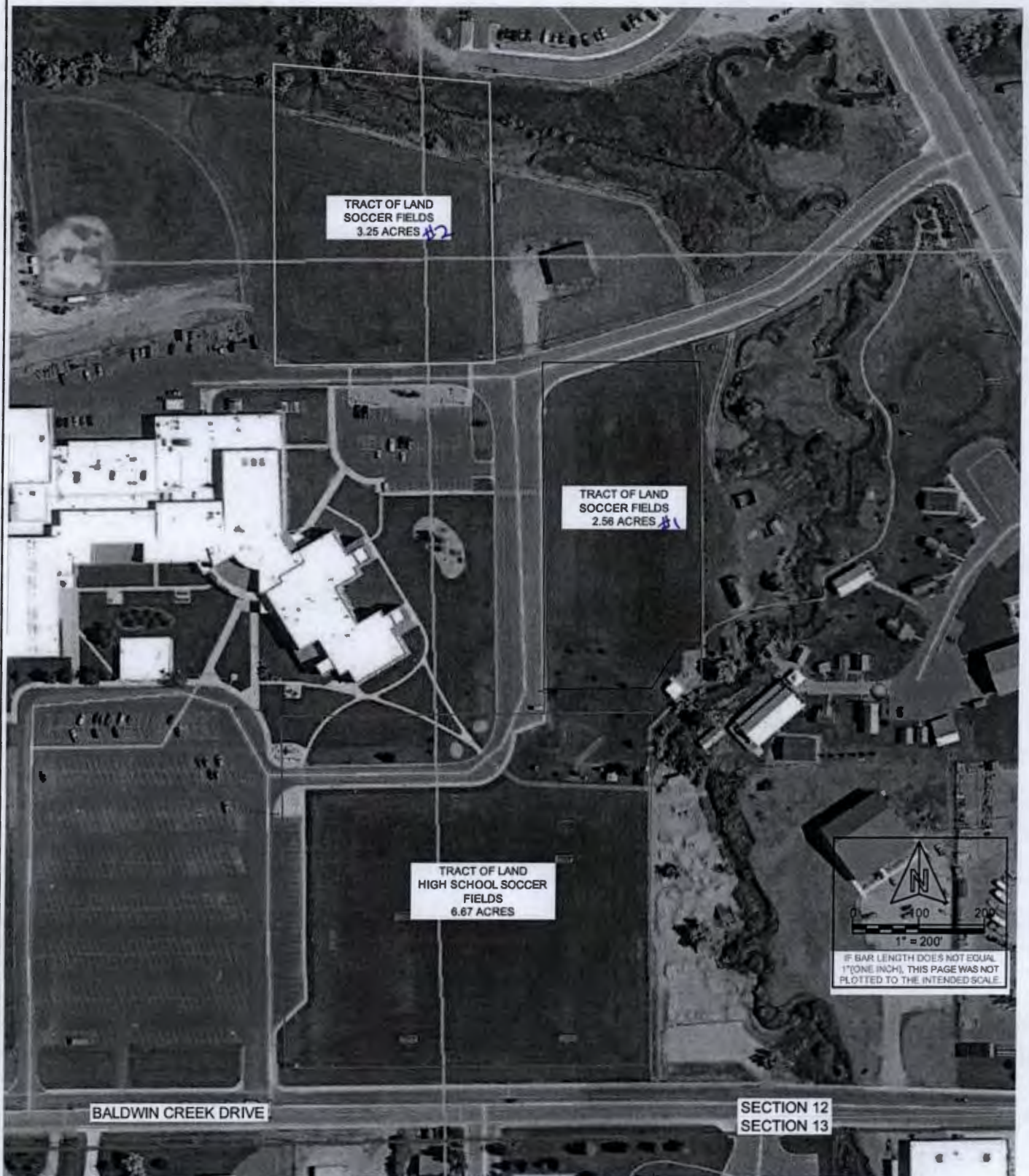
307-334-5646

Drawn By: DAF
Checked By: BM
Job #:
Date: 8/16/18
Revision: 1
Date: 10/31/19
Explanation:

TRACT OF LAND
FREMONT COUNTY HIGH SCHOOL SECTION 12, T33N, R100W, 6th PM FREMONT COUNTY, WY

FREMONT COUNTY SCHOOL DISTRICT No. 1 615 Popo Agie St. Lander, WY 82520
--

Z:\PROJECTS\FREMONT COUNTY SD NO.1\FCS01_SP.dwg SAVED DATE 2019-10-31 14:56



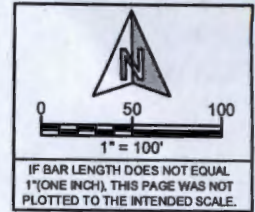
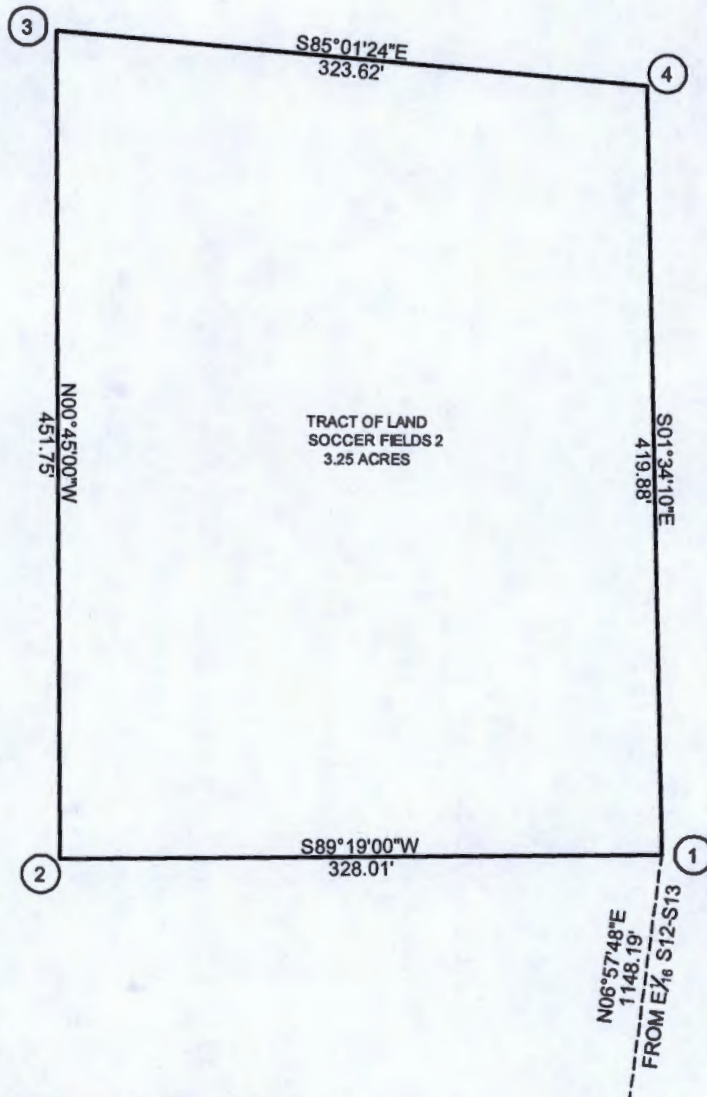
WHS
ENGINEERING > SURVEYING > PLANNING
155 N 1st, STE A
LANDER, WY 82520
307-334-5646

Drawn By: DAF
Checked By: BM
Job #:
Date: 5/13/19
Revision:
Date: 10/31/19
Explanation:

TRACT OF LAND
LANDER VALLEY
HIGH SCHOOL
SECTION 12,
T33N, R100W, 6th PM
FREMONT COUNTY, WY

FREMONT COUNTY
SCHOOL DISTRICT
No. 1
615 Popo Agie St.
Lander, WY
82520

Z:\PROJECTS\FREMONT COUNTY SD HQ\1\dwg\FCSO REV 10-31-19.dwg SAVED DATE 2019-10-31 12:53



LEGAL DESCRIPTION:

A Tract of Land located in the SE1/4, Section 12, Township 33 North, Range 100 West., 6th PM, Fremont County, Wyoming, more particularly described as follows:

Beginning at Corner No. 1, which corner bears N06°57'48"E, a distance of 1148.19 feet from the E1/16 Corner common to said Section 12 and Section 13;

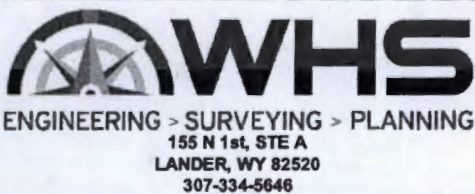
Thence proceed S89°19'00"W, a distance of 328.01 feet to corner No. 2;

Thence proceed N00°45'00"W, a distance of 451.75 feet, more or less, to corner No. 3, a point on the northerly boundary of the Fremont County School District No. 1 property;

Thence along the said property boundary S85°01'24"E, a distance of 323.62 feet to Corner No. 4;

Thence proceed S01°34'10"E, a distance of 419.88 feet to Corner No. 1, being the Point of Beginning of this description;

Said Tract contains 3.25 acres, more or less.



Drawn By: DAF
Checked By:
Job #:
Date: 10/31/19
Revision:
Date:
Explanation:

TRACT OF LAND
FREMONT COUNTY HIGH SCHOOL SECTION 12, T33N, R100W, 6th PM FREMONT COUNTY, WY

FREMONT COUNTY SCHOOL DISTRICT No. 1 615 Popo Agie St. Lander, WY 82520
--