

Popo Agie River Park Pathway

Kasey Jones, PhD, PE





OUTLINE

01

Introduction

02

Path Alignment

03

Path Cross Section

04

North First Street

05

Considerations

06

Main Street

07

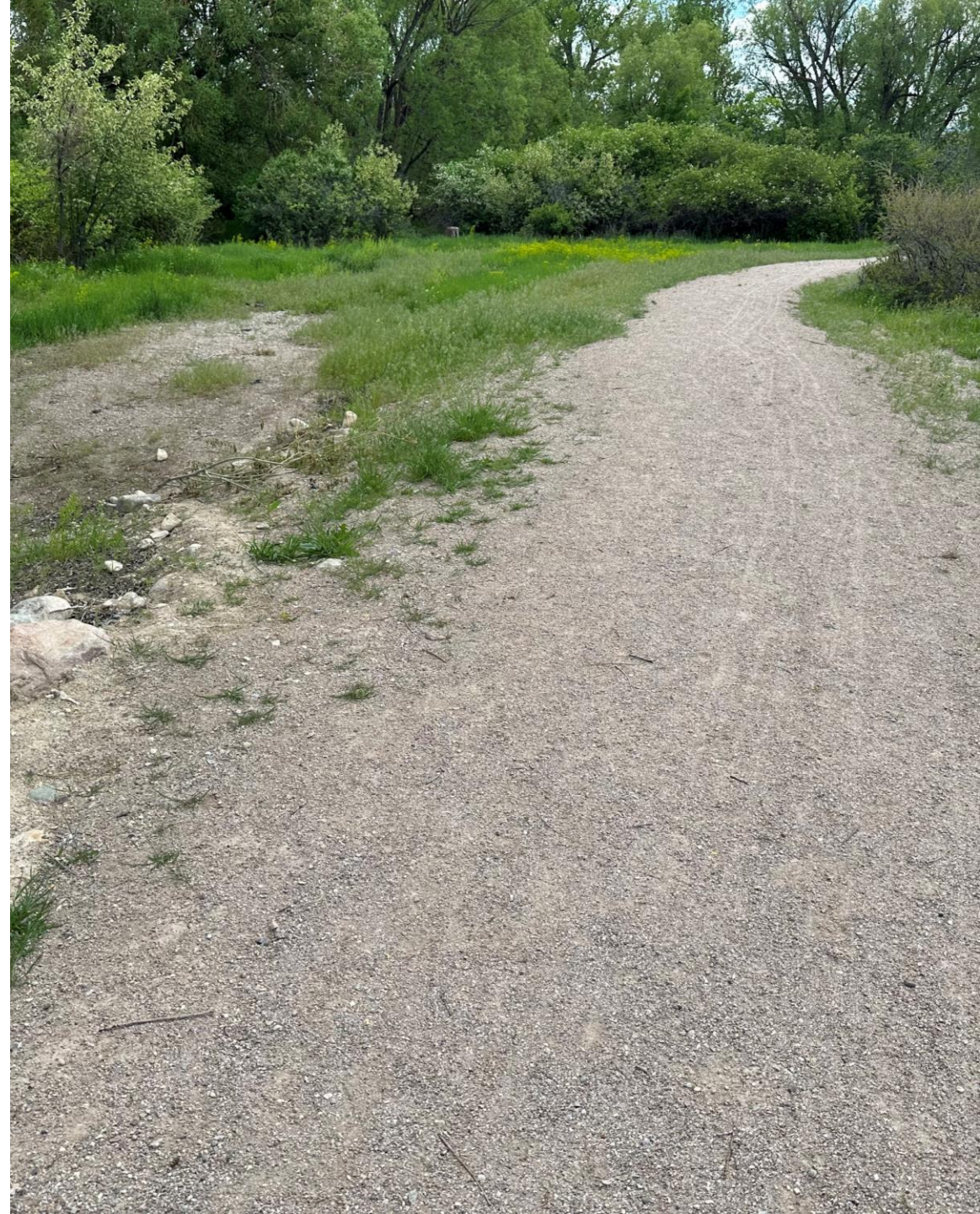
Schedule

08

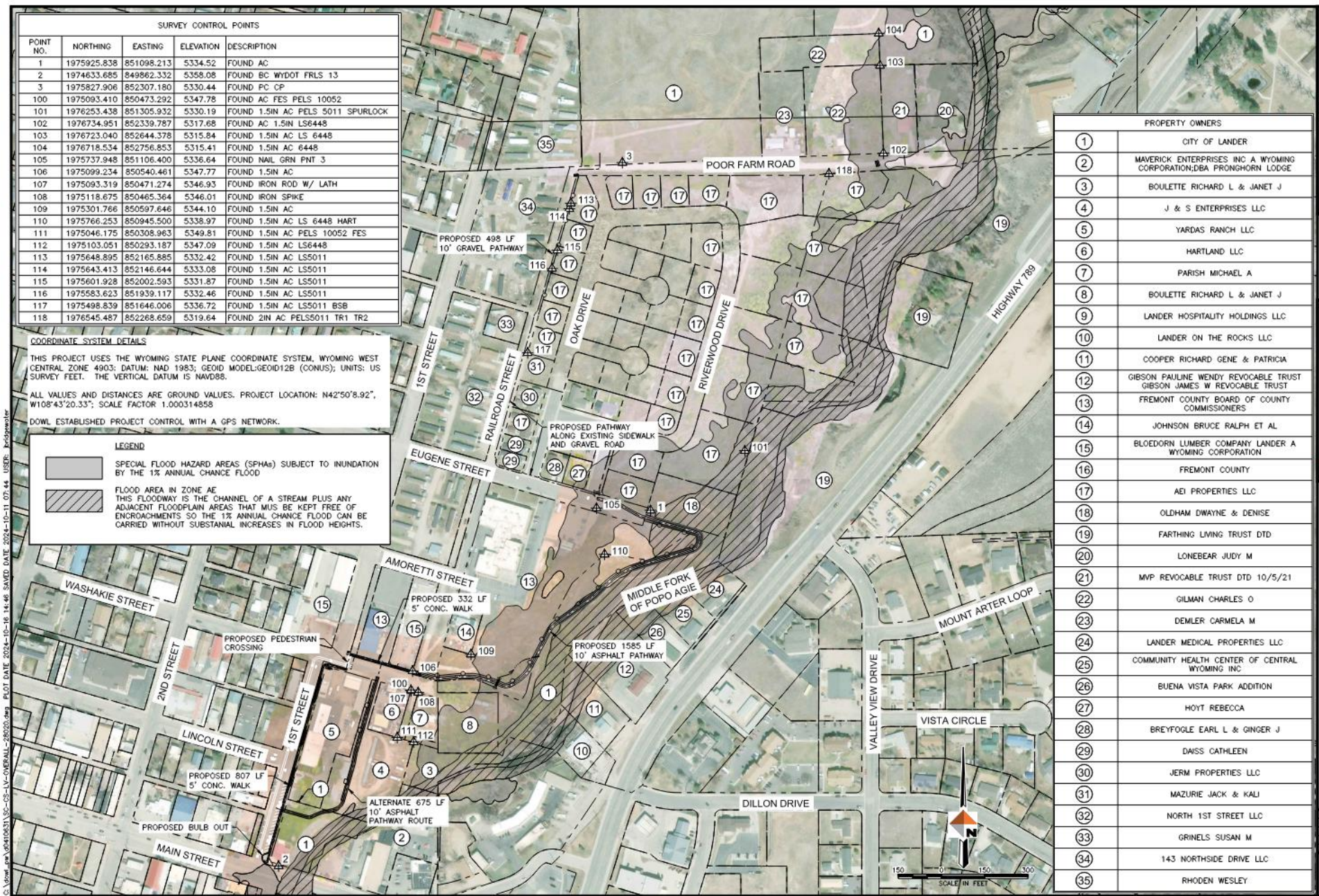
Questions & Discussion

INTRODUCTION

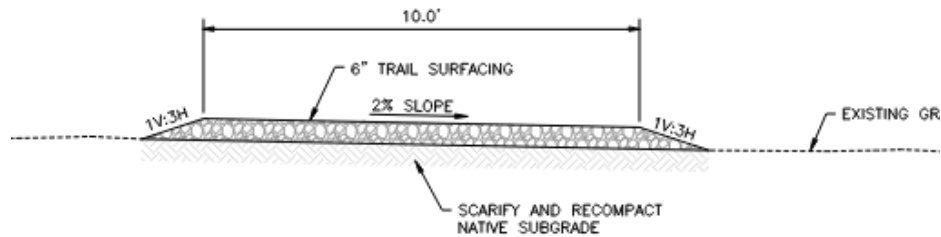
- Project Scope
 - Path Design connecting Main Street with new Popo Agie River Park
 - Main Street Crossing Study
- TAP Grant Funded



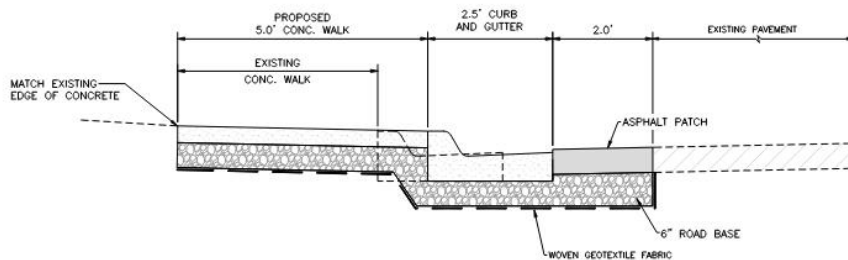
PATH ALIGNMENT



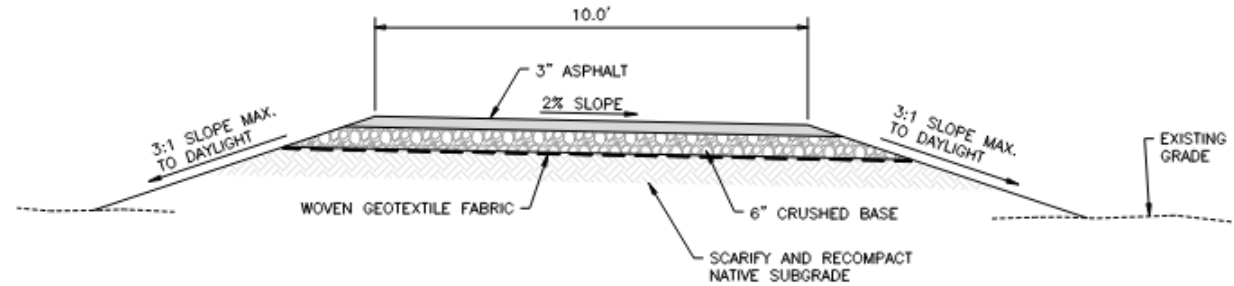
PATH CROSS SECTIONS



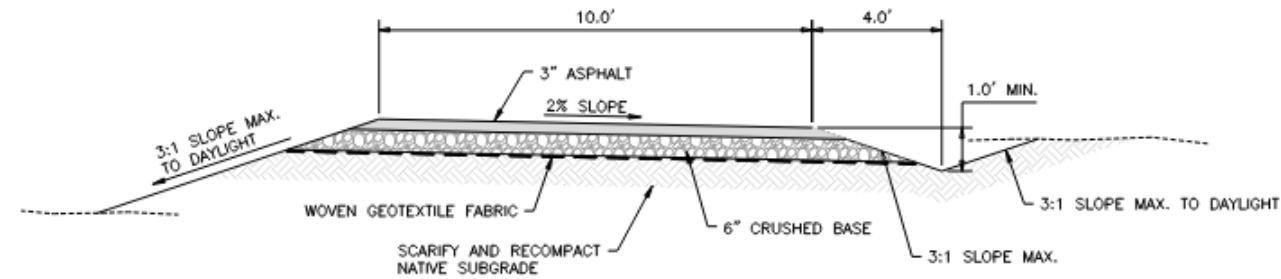
5
TYPICAL SECTION - ALONG RAILROAD STREET
 STA. 40+74 TO 40+85, 46+10 TO 51+08
 NTS



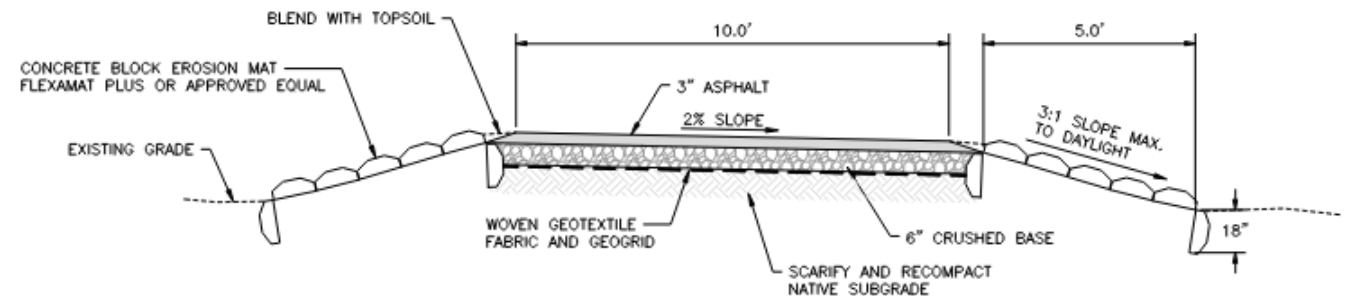
3
TYPICAL SIDEWALK SECTION
 STA. 10+27 TO 17+82, 18+40 TO 20+87
 NTS



2
TYPICAL SECTION - OUTSIDE OF FLOODWAY/FLOODPLAIN SLOPING RIGHT
 STA. 23+68 TO 27+00, 29+00 TO 30+20, 34+70 TO 36+82
 NTS



3
TYPICAL SECTION - OUTSIDE OF FLOODWAY/FLOODPLAIN SLOPING LEFT WITH V BOTTOM DITCH RIGHT
 STA. 20+97 TO 23+68
 NTS



NORTH FIRST STREET

WESTERN ELEVATIONS LLC

SCALE IN FEET
0 6 12

REV	DATE	DESCRIPTION

DOWL
WWW.DOWL.COM
1833 S. Sheridan Ave.
Sheridan, Wyoming 82801
307-672-9006

POPO AGIE RIVER PARK PATHWAY
CITY OF LANDER WYOMING

CURB BUMP OUT AND STRIPING DETAIL

PROJECT: 5091 28020.01
DATE: 10/16/2024

© DOWL 2023
SHEET

C6.0

MAIN STREET

1ST STREET

CITY OF LANDER

KEYNOTES

NOTE: SOME KEY NOTE MAY NOT BE USED ON THIS SHEET.

1. CONCRETE CURB AND GUTTER.
2. ACCESSIBLE PARKING SPACE
3. 4" WHITE STRIPING
4. ADA PARKING SYMBOL
5. SIDEWALK RAMP
6. 6" BICYCLE LANE
7. BICYCLE LANE SYMBOL
8. TRAFFIC FLOW ARROW
9. "ONLY" WHITE LETTERING
10. ONE WAY SIGN (MUTCD R6-1)
11. ONE WAY SIGN/NO TRUCK ACCESS SIGN (MUTCD R6-1 AND R5-2)
12. DRIVEWAY ACCESS
13. REMOVABLE BOLLARDS

1
C6.0

MAIN STREET AND 1ST STREET INTERSECTION DETAIL
SCALE: 1" = 6'

DESIGN CONSIDERATIONS



ADA Compliance – cross slopes, path grades, surfacing, widths, etc.



Minimizing Wildlife Impacts – timing, fences, etc.



Floodway – No fill in floodway, i.e. cause no water rise



Erosion/Path Sustainability – Separation from river, inclusion of erosion mats

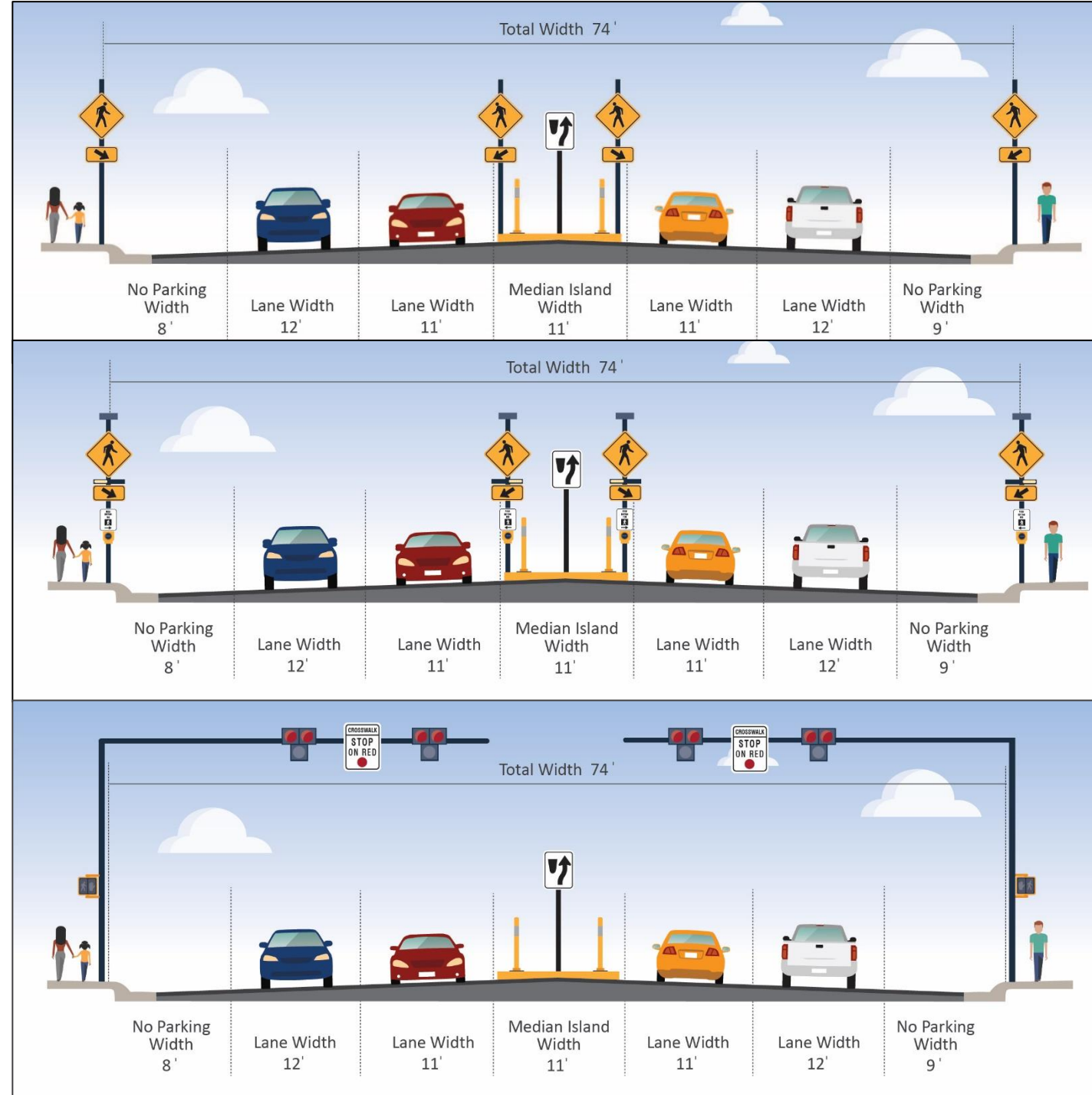


MAIN STREET CROSSING STUDY

- Collected pedestrian and traffic data
- Peak Pedestrians
 - 7-8 PM
 - Peak – 50/hr
 - Projected – 65/hr



- Developed four alternatives
- WYDOT prefers a grade-separated crossing



SCHEDULE

- Tentative Final Submittal – 12/31/24



THANK YOU

QUESTIONS AND DISCUSSION

