

Matthew Gibb


215 South Broadway  
Lake Orion, MI 48362

PAY FOR YOUR PROJECT WITH:



CLICK HERE TO GET A CREDIT DECISION IN SECONDS

Select Package



\$330 per month

☐ **6'H Black Chain Link (Layout 1)**

☒ 6'H Residential Black Vinyl Coated Chain-Link

☐ Black

**Features & Benefits**

- Superior Chain Link Specification
- Includes Top Rail & Tension Wire


**Specifications**

- **Post:** 1-5/8" // 2-1/2"
- **Rail:** 1-3/8" x 21"
- **Picket:** 9 ga.

**Warranty**

- 15-year Limited Warranty
- 3 Year Workmanship Warranty

Choose this package ↓



\$258 per month

☒ **6'H Black Chain Link (Layout 2)**

☒ 6'H Residential Black Vinyl Coated Chain-Link

☐ Black

**Features & Benefits**

- Superior Chain Link Specification
- Includes Top Rail & Tension Wire

**Specifications**

- **Post:** 1-5/8" // 2-1/2"
- **Rail:** 1-3/8" x 21"
- **Picket:** 9 ga.

**Warranty**

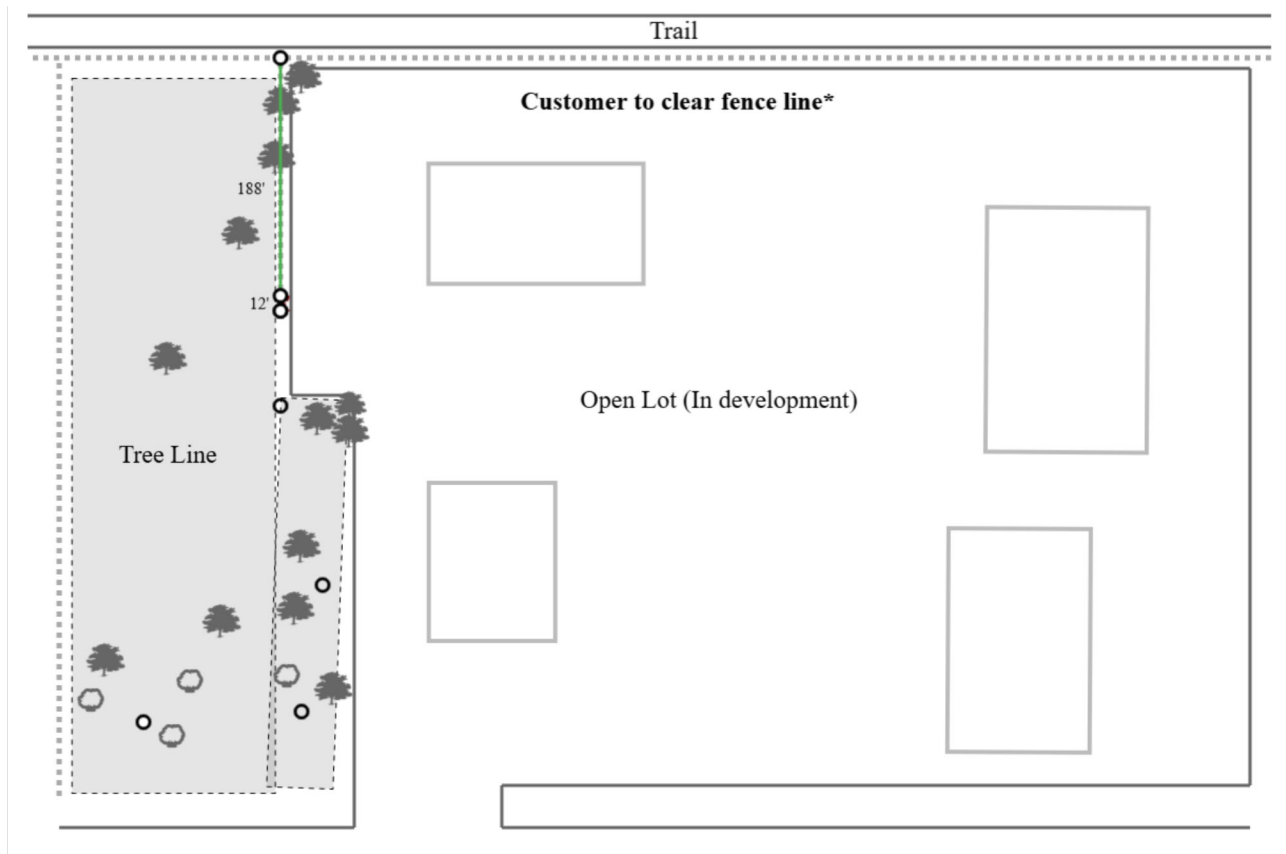
- 15-year Limited Warranty
- 3 Year Workmanship Warranty

Choose this package ↓

The image shown is a representation of the style of the fence, and not meant to be a specification of the height, color, or grade.

6'H Black Chain Link (Layout 2) - 188 LF

6'H Residential Black Vinyl Coated Chain-Link



FENCE FOOTAGE CONTAINED IN THIS PROPOSAL IS APPROXIMATE BASED ON THE FIELD MEASUREMENTS. FINAL PRICE WILL BE ADJUSTED BASED ON ACTUAL FOOTAGE USED, AS SET FORTH IN THE TERMS AND CONDITIONS.

Included in the job

(1) 12ft DD Standard Gate, Standard Latch

Job Notes

Customer to clear any trees, shrubs, or debris within 2 feet of fence line.

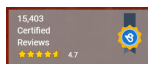
Customer to clear fence line.

No returns for special order products

"ABOVE AND BEYOND"

This company was a pleasure to deal with from the time we started our project you could tell that customer service was very important to them. This showed in the way they explained the project to making sure that every deadline was met. I would deal with the company again because they showed great integrity in business.

★★★★★  
Judith Volger



Today's Price: 6" H Black Chain Link (Layout 2)

\$12,135.11

**Choose your payment method**

Pay with Financing **\$12,135.11**

Pay with ACH/E-Check **\$11,953.08**  
Save \$182.03

Pay with Credit Card **\$12,135.11**

Contact Sales