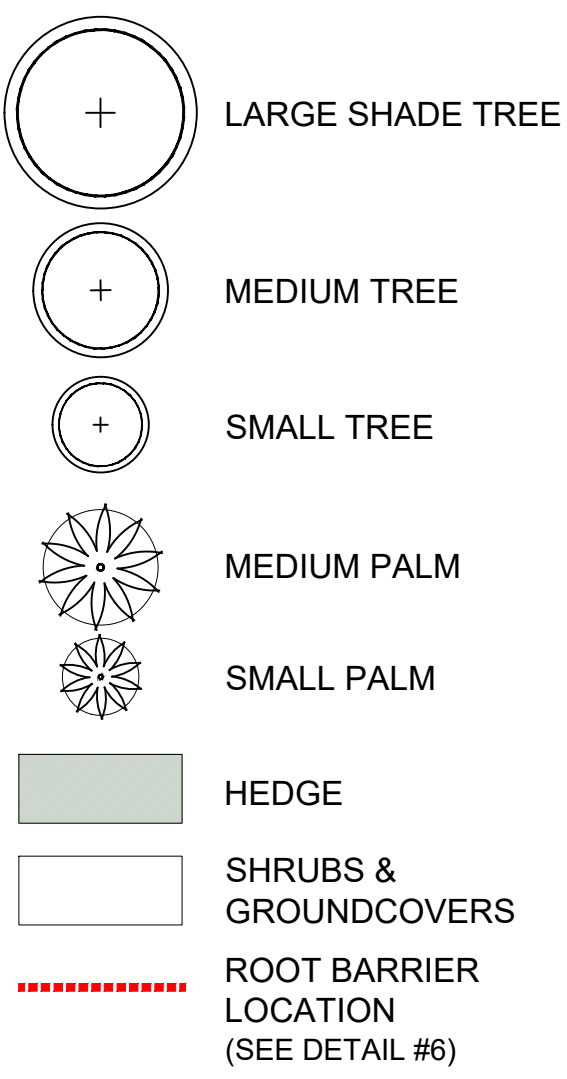


LEGEND



LANDSCAPE CALCULATIONS

ZONING			TOD-E	
SITE AREA			47,233SF	1.08 Acres
VEHICULAR USE AREA (VUA)			0	
			REQUIRED	PROVIDED
IMPERVIOUS AREA			65%	62.00%
PERVIOUS AREA			35%	37.89%
VUA/PERIMETER BUFFER LANDSCAPE (Fronting North G Street, 10th Ave. North and Alley)				
PERIMETER LANDSCAPE STRIP BETWEEN OFF-STREET PARKING AND R.O.W.			5'	4.5' to 11.6'
400 LF OF VUA FRONTING R.O.W.				
1 LARGE TREE/ 25 LF				
1 MEDIUM TREE/ 20 LF			20	20
1 SMALL TREE/ 15 LF				
CONTINUOUS 3' HEDGE				Yes
PERIMETER LANDSCAPE BETWEEN OFF-STREET PARKING AND ABUTTING PROPERTIES				
99 LF OF VUA FRONTING ABUTTING PROPERTY			5'	5'
1 TREE/ 20 LF			5	5
CONTINUOUS 3' TO 6' HEDGE				Yes
INTERIOR LANDSCAPE FOR PARKING AREAS				
TOTAL VUA LANDSCAPE ISLANDS (SF)				729
1 TREE/ 125 SF			6	6
INTERIOR LANDSCAPE (EXCLUSIVE OF VUA AND BUILDINGS)				
1 LARGE TREE/ 625 SF				
1 MEDIUM TREE/ 400 SF				
1 SMALL TREE/ 225 SF			15	30
TOTAL INTERIOR LANDSCAPE TREES/PALMS				30
STREET TREES ALONG NORTH G STREET				
STREET TREES ALONG 10TH AVENUE NORTH				3
			5	2
TOTAL PLANT MATERIAL				
TREES (TREES/PALMS)			51	66
SHRUBS				
GROUNDCOVERS				
NATIVE PLANT MATERIAL CALCULATIONS				
SEVENTY-FIVE (75) PERCENT OF REQUIRED TREES SHALL BE NATIVE			75%	78%
SEVENTY-FIVE (75) PERCENT OF REQUIRED SHRUBS SHALL BE NATIVE			75%	98%
NO MORE THAT 50% OF LANDSCAPE AREAS SHALL BE SOD			3597	680
HEDGE/FENCE PROVIDED TO SCREEN MECH. EQUIPMENT				Yes
NOTE: ALL SOD AND LANDSCAPE TO RECEIVE 100% COVERAGE FROM AN AUTOMATIC IRRIGATION SYSTEM USING AN APPROVED WATER SOURCE. IRRIGATION SYSTEM SHALL BE EQUIPED WITH A RAIN SENSOR.				

QT	code	species	common name	drought tolerance	native	specifications	container size	spacing
TREES								
6	BU	Bursera simaruba	Gumbo Limbo	High	yes	16' ht, 6" DBH, 6' CT. Std.	FG	as shown
3	CE	Conocarpus erectus	Green Buttonwood	High	yes	16' ht, 4" DBH, 6' CT. Std.	FG	as shown
18	CO	Coccoloba diversifolia	Pigeon Plum	High	yes	14' ht, 4" DBH, Std.	FG	as shown
1	IC	Ilex cassine	Dahoon Holly	Medium	yes	12' ht, 3" DBH, Std.	65 gal.	as shown
12	MY	Myrcianthes fragrans	Simpson's Stopper	High	yes	12' x 5' spr, 2.5" DBH Std	FG	as shown
7	QV	Quercus virginiana	Live Oak	High	yes	16' ht, 6" DBH, 6' CT. Std.	FG	as shown
EXISTING TREES								
1	QV-E	Quercus virginiana	Live Oak			Existing		as shown
PALMS								
4	ARX	Archontophoenix cunninghamiana	King Palm		no	8 ft CT, 16 HI O.A.	FG	as shown
10	PTX	Ptychosperma elegans	Alexander Palm	Medium	no	8 ft CT, 16" O.A./Double	FG	as shown
4	THX	Thrinax radiata	Florida Thatch Palm	High	yes	12" O.A./Double-trunk	FG	as shown
SHRUBS, GROUNDCOVERS & VINES								
80	CAP	Capparis cynophallophora	Jamaican Caper	High	yes	18" ht x 18" spr.	3 Gal.	24" O.C.
227	CHR	Chrysobalanus icaco 'Red Tip'	Red Tip Cocoplum	Medium	yes	30" O.A.	7 Gal.	30" O.C.
64	COS	Conocarpus erectus 'Sericeus'	Silver Buttonwood	High	yes	30" O.A.	7 Gal.	30" O.C.
10	CRL	Crinum asiaticum 'Variegated'	Crinum Lily	High	no	30" O.A.	7 Gal.	42" O.C.
162	DII	Dietes iridioides	African Iris	Medium	no	18" O.A./ Full Clump	1 Gal.	24" O.C.
17	FIM	Ficus microcarpa 'Green Island'	Green Island Ficus	High	naturalized	18" O.A.	3 Gal.	24" O.C.
136	HAM	Hamelia nodosa	Dwarf Firebush	Medium	yes	24" ht x 24" spr.	3 Gal.	36" O.C.
157	ILX	Ilex vomitoria 'Schillings Dwarf'	Dwarf Yaupon Holly	High	yes	18" ht x 18" spr.	3 Gal.	24" O.C.
5	SPX	Serenaoa repens	Saw Palmetto	High	yes	24" O.A./ Full Clump	7 Gal.	42" O.C.
741	TRA	Trachelospermum asiaticum	Asiatic Jasmine	High	no	10" O.A. Full	1 Gal.	15" O.C.
61	TRF	Tripsacum floridanum	Dwarf Fakahatchee Grass	Medium	yes	24" O.A./ Full Clump	3 Gal.	30" O.C.
14	ZAP	Zamia pumila	Coontie	High	yes	24" O.A./ Full Clump	3 Gal.	30" O.C.
SOD								
680	SOD	Stenotaphrum secundatum	St. Augustine Grass		yes	Staggered Panels		
273	SOD-R	Stenotaphrum secundatum	St. Augustine Grass		yes	Staggered Panels		

NOTES:

- THE UNPAVED PORTION OF THE RIGHT-OF-WAY ADJACENT TO THE PROPERTY LINE TO BE LANDSCAPED AND PROVIDED WITH IRRIGATION AND MAINTENANCE.
- ROOT BARRIERS SHALL BE INSTALLED AT ALL TREES/PALMS THAT ARE PLANTED WITHIN FIVE (5) FEET OF UNDERGROUND UTILITIES OR UTILITY EASEMENT.
- ALL LANDSCAPE AREAS SHALL BE PROVIDED WITH A FULLY AUTOMATICALLY OPERATED IRRIGATION SYSTEM. IRRIGATION SYSTEM SHALL PROVIDE COMPLETE COVERAGE OF ALL PLANT MATERIALS. THIS SYSTEM SHOULD HAVE RAIN SENSOR AND SHOULD AUTOMATICALLY SHUT OFF WHEN RAINING.
- WITHIN VISIBILITY TRIANGLES, LANDSCAPE SHALL BE MAINTAIN TO PROVIDE CLEAR VISIBILITY WITHOUT OBSTRUCTION FROM AN AREA BETWEEN THIRTY (30) INCHES AND EIGHT (8) FEET ABOVE AVERAGE ELEVATION OF THE INTERSECTION.

GRAPHIC SCALE
NORTH 0' 20' 40' 80'

Sunshine State
One Call

Know what's below.
Call before you dig.

811



LANDSCAPE ARCHITECTURE
LAND PLANNING
URBAN DESIGN
2208 NE 26 TH STREET, #1
FORT LAUDERDALE, FLORIDA 33306 USA
TEL: 954.333.8259
www.andresmontero.com
L20600598

Rev	Date	Description
1		
2		
3		
4		
5		
6		

Sheet Title:
LAKE WORTH STATION
10th Ave. North & North G St.
Lake Worth, FL 33460

Project Name:
LAKE WORTH STATION
10th Ave. North & North G St.
Lake Worth, FL 33460

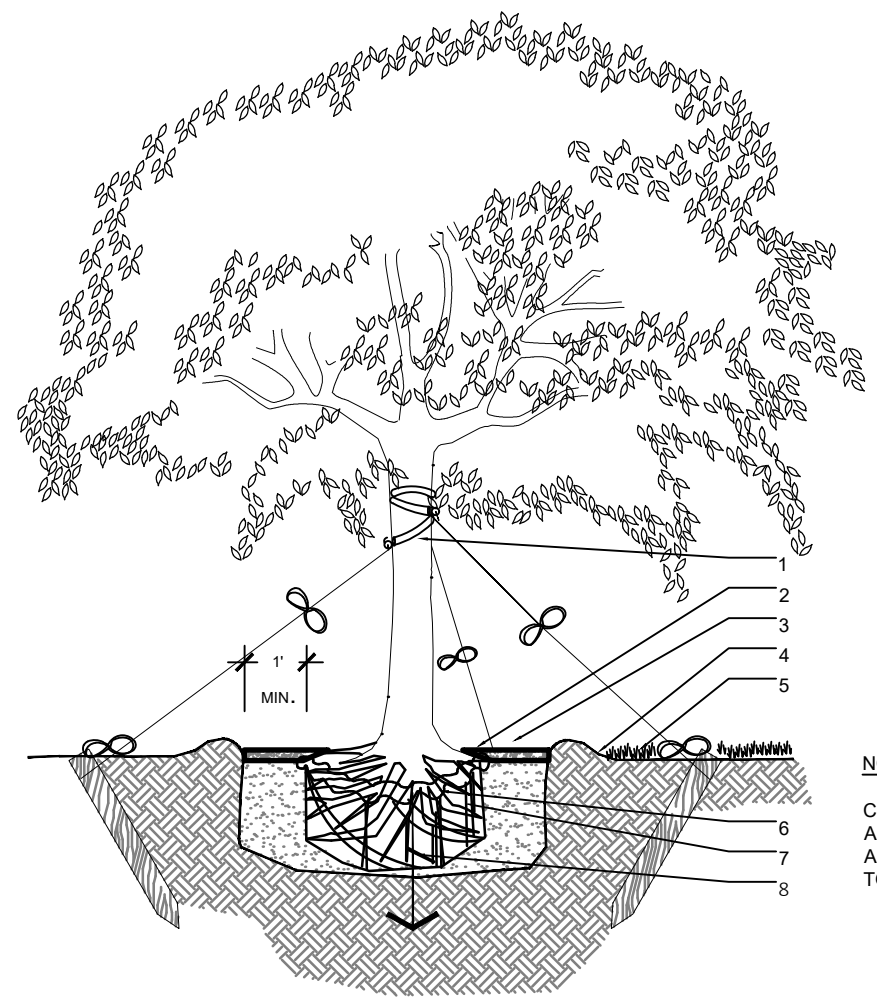
SEAL / SIGNATURE

ALL DESIGNS AND DETAILS ON THIS DRAWING ARE THE PROPERTY OF ANDRES MONTERO LANDSCAPE ARCHITECTURE, LLC, AND SHALL NOT BE USED, COPIED, OR REPRODUCED WITHOUT WRITTEN PERMISSION FROM ANDRES MONTERO LANDSCAPE ARCHITECTURE, LLC.

Date: JUNE 15, 2022
Scale: 1" = 20'
Drawn By: AEM/GMP/MEP
Approved By: AEM
Project No: 202206

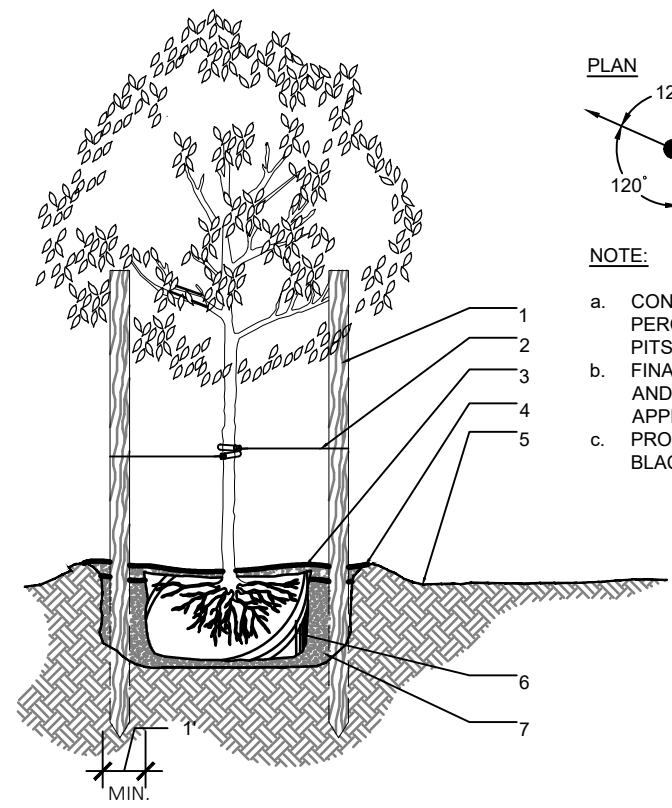
Sheet Number:
L-03

SITE PLAN APPROVAL SET - NOT FOR CONSTRUCTION



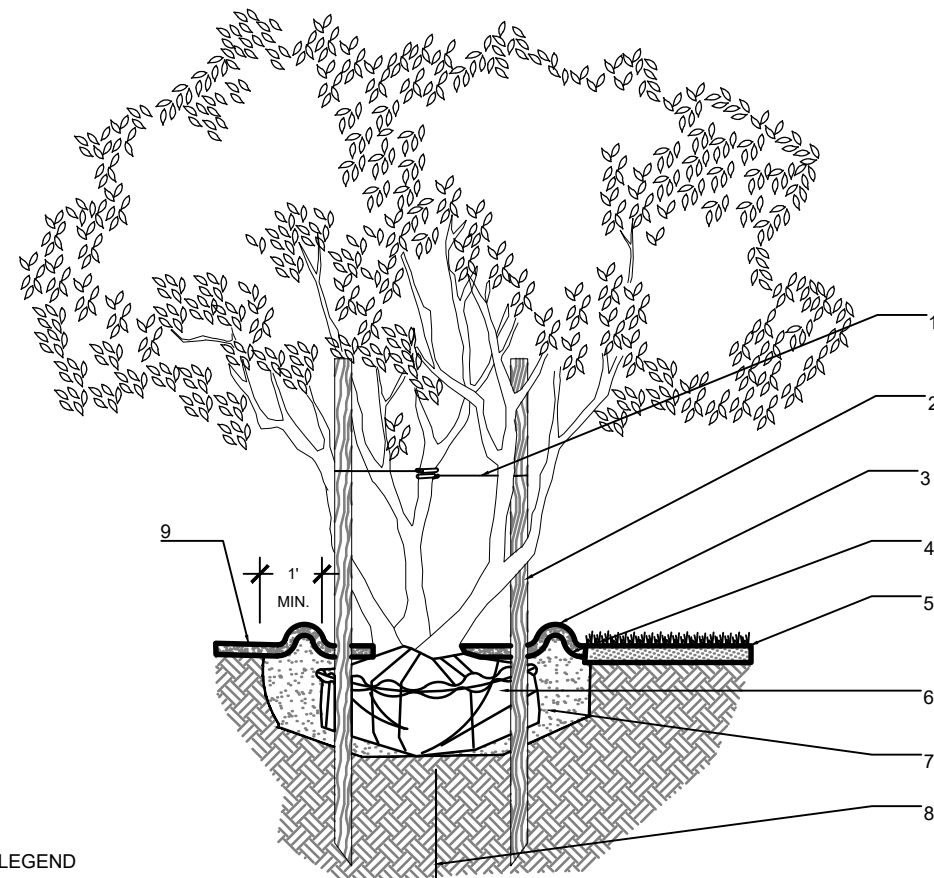
- LEGEND
- 2" NYLON STRAPPING WRUBBER HOSE-WRAPPED 360 AROUND TRUNK BEFORE TYING- WRAP @ LATERAL BRANCH
 - 3" MULCH AS SPECIFIED MIN. 24" FROM TRUNK
 - 3" SOIL BERM TO HOLD WATER
 - 2"x4" STAKES BURIED 3" BELOW FINISHED GRADE
 - FINISHED GRADE - SOD CONDITION (SEE GRADING PLAN)
 - B&B OR CONTAINERIZED (SEE SPECIFICATIONS FOR ROOT BALL REQUIREMENTS)
 - PREPARED PLANTING SOIL AS SPECIFIED
 - AUGER PER SPECS FOR PERCOLATION

2 LARGE TREE
SECTION
d-Large tree.dwg
SCALE: N.T.S



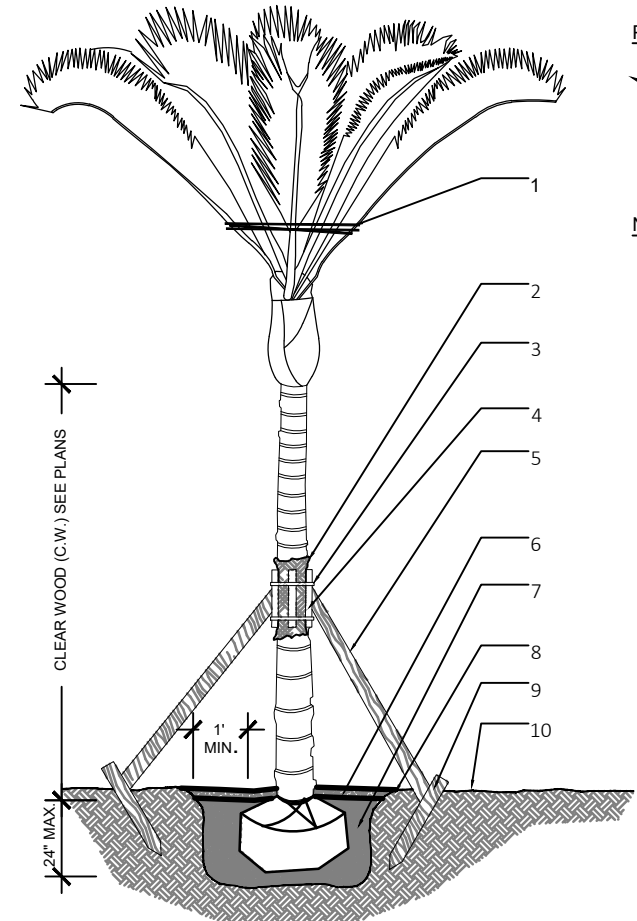
- LEGEND
- THREE 2"x4"x6" STAKES SPACE EVENLY AROUND TREE PAINTED BROWN.
 - #10 GAUGE WIRE
 - 3" MINIMUM OF MULCH
 - SOIL BERM TO HOLD WATER
 - FINISHED GRADE (SEE GRADING PLAN)
 - B&B OR CONTAINERIZED (SEE SPECIFICATIONS FOR ROOT BALL REQUIREMENTS)
 - PREPARED PLANTING SOIL AS SPECIFIED

3 SMALL TREE
SECTION
d-Small tree.dwg
SCALE: N.T.S



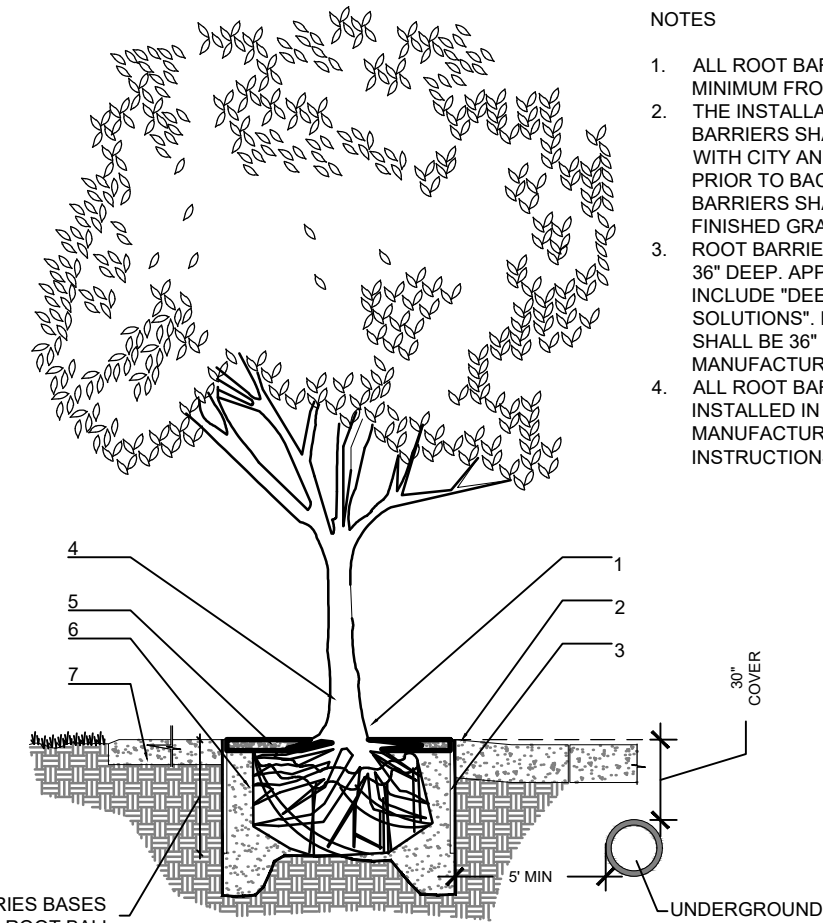
- LEGEND
- 2" NYLON STRAPPING
 - THREE 2"x4"x6" STAKES
 - 3" MULCH AS SPECIFIED
 - FINISHED GRADE - SOD CONDITION (SEE GRADING PLAN)
 - SOIL BERM TO HOLD WATER
 - B&B OR CONTAINERIZED (SEE SPECIFICATIONS FOR ROOT BALL REQUIREMENTS)
 - PREPARED PLANTING SOIL AS SPECIFIED
 - AUGER PER SPECS FOR PERCOLATION
 - MULCH CONTINUES - SHRUB BED CONDITION

4 MULTI-TRUNK TREE
SECTION
d-Multi-trunk tree.dwg
SCALE: N.T.S



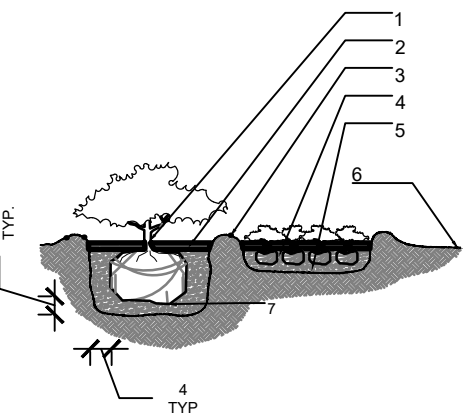
- LEGEND
- PRUNE AND TIE FRONDS WITH HEMP TWINE.
 - TWO LAYERS OF BURLAP TO PROTECT TRUNK
 - TWO STEEL BANDS TO SECURE BATTONS
 - THREE 2" X 4" X 16" WOOD BATTONS
 - 5/2" X 4" LUMBER POLE BRACES. NAIL (DRILL AND NAIL IF NECESSARY) TO BATTONS & 2" X 4" STAKES. FLAG AT MIDPOINT.
 - 3" MIN. MULCH- SEE SPECIFICATIONS
 - PREPARED PLANTING SOIL AS SPECIFIED. PALMS SHALL BE PLANTED WITH THE TOP OF ROOTBALL AT FINISHED GRADE
 - BERM SOIL TO HOLD WATER
 - 2" X 4" X 3" WOOD STAKES
 - FINISH GRADE

5 SMALL PALM
SECTION
d-Small palm.DWG
SCALE: N.T.S



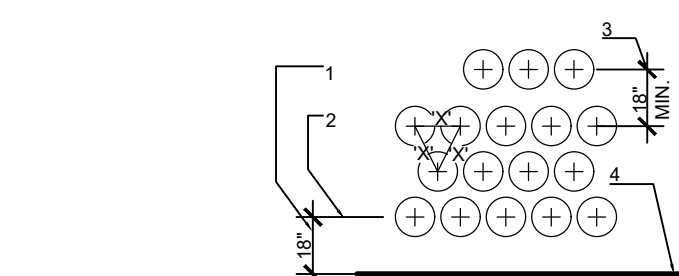
- LEGEND
- SET ROOT-TRUNK COLLAR FLUSH 1" ABOVE FINISHED GRADE.
 - SIDEWALK OR PAVERS
 - 18" ROOT BARRIER. EXTEND A MINIMUM 6' IN BOTH DIRECTION FROM THE CENTERLINE OF THE TREES
 - CENTER TREE IN PLANTER OPENING
 - MULCH
 - BACKFILL WITH TOPSOIL OR AMENDED TOPSOIL
 - CONCRETE SIDEWALK

6 ROOT BARRIER INSTALLATION
SECTION
d-2006-Root barrier.dwg
SCALE: N.T.S



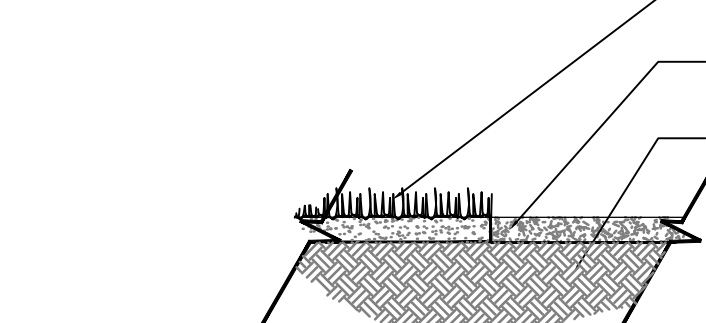
- LEGEND
- PLANT MATERIAL SHALL BE PLANTED 2" HIGH WITH SOIL MOUNDING UP TO THE TOP OF ROOT BALL.
 - 3" MINIMUM OF MULCH
 - SOIL BERM TO HOLD WATER
 - MINIMUM DEPTH OF 12" PLANTING SOIL FOR GROUNDCOVER BED
 - EXCAVATE ENTIRE BED SPECIFIED FOR GROUNDCOVER BED
 - FINISHED GRADE (SEE GRADING PLAN)
 - PREPARED PLANTING SOIL AS SPECIFIED
- NOTE: WHEN GROUNDCOVERS AND SHRUBS USED IN MASSES, ENTIRE BED TO BE EXCAVATED TO RECEIVE PLANTING SOIL & PLANT MATERIAL, UNLESS NOTED OTHERWISE.

8 SHRUBS & GROUNCOVERS
SECTION
d-Shrubs and groundcovers.DWG
SCALE: N.T.S



- LEGEND
- SETBACK FOR SHRUBS PLANTED 24" O.C. OR GREATER.
 - SETBACK FOR GROUNDCOVER AND ANNUALS
 - PROVIDE MIN. 18" SPACING BETWEEN DIFFERENT PLANT TYPES.
 - CURB OR EDGE OF PAVEMENT
- NOTE:
- ALL SHRUBS AND GROUNDCOVER MASSES TO USE TRIANGULAR SPACING EXCEPT WHERE NOTED REFER TO PLANT LIST FOR INDIVIDUAL PLANT SPACING "X".

9 TYPICAL PLANT SPACING
SECTION
d-Typical spacing.DWG
SCALE: N.T.S



- LEGEND
- SOD (PROVIDE CLEAN, SMOOTH EDGE BETWEEN SOD AND MULCHED AREAS)
 - 3" DECORATIVE MULCH (SEE SPECIFICATIONS)
 - PLANTING SOIL (FINE RAKED AND FREE OF WEEDS AND OTHER DELETERIOUS MATERIALS, SEE SPECIFICATIONS)
- NOTE:
- ALL MULCH SHALL BE FREE OF FIRE ANTS AND DEBRIS ONLY ENVIRONMENTAL FRIENDLY MULCH SHALL BE APPROVED.

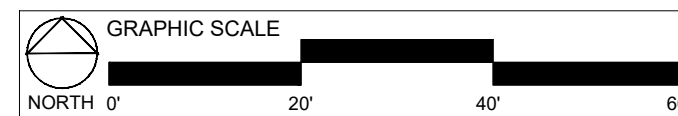
10 MULCH
SECTION
d-Mulch.DWG
SCALE: N.T.S

GENERAL NOTES

- Before construction begins, the Landscape Contractor is responsible for locating all underground utilities and must avoid damaging any services during construction. If any damage occurs by fault of the Contractor, the necessary repairs must take place at the Landscape Contractor's expense and under the supervision of the Owner's representative.
- All proposed trees and plant materials shall be graded as Nursery Grade Florida No. 1 or better as outlined by the Florida Department of Agriculture and Consumer Services, Division of Plant Industry "Grades and standards for Nursery Plants", most current edition. All planting shall be done in accordance with the Florida Nurserymen's and Grower's Association approved practices.
- In addition to these requirements the Landscape Contractor shall comply with all local landscape codes and requirements as part of this base bid and contract in order to satisfy the review and approval of the governing agency.
- All screening hedges shall be planted and maintained in a way that they form a continuous visual screen. Screening hedges at VUA to be maintained at a minimum height of thirty (30) inches.
- All planting beds shall be excavated to a minimum depth of twenty-four (24") inches and backfilled with a suitable soil. All plant material shall be planted in planting soil that is delivered to the site in a loose, clean and friable condition. The planting soil shall be the approximate proportions as follows: 50% sand and 50% organic material consisting of native peat, well-decomposed sawdust, leaf mold and top soil. It shall provide a good pliable and thoroughly mixed medium with adequate aeration, drainage and water-holding capacity. It shall also be free of all extraneous debris, such as roots, stones, weeds, etc.
- All trees/palms and shrubs shall be fertilized with "Agriform" 20-10-5 planting tablets as per the manufacturers specifications at the time of installation and prior completion of pit backfilling also in conjunction with note #5. Tablets to be placed uniformly around the root mass at a depth that is between the middle and bottom of root mass at an application rate of: One (1) - 21 gram tablet for 1 gal container, two (2)- tablets for 3 gal container, three (3)- tablets for 5 gal container, four (4)-tablets for 7 gal container, three (3)-tablets for each 1/2 inch of tree caliper, and seven (7) tablets for palms. Ground Cover areas shall receive fertilization with "Ozmocote" time release fertilizer as per manufacturer's specification.
- All plant beds shall receive a 3" layer of organic mulch, which is to be watered-in after installation. Mulch should be at least six (6) inches away from any portion of a structure or tree trunk and three (3) inches away from the base of shrubs. Only environmental friendly mulch shall be approved, Cypress mulch shall not be accepted.
- All plant material shall be thoroughly watered in at the time of planting and until landscape material is established. No dry material shall be permitted.
- The plant material schedule is presented for the convenience of the Landscape Contractor. In the event of a discrepancy between the plan and the plant key, the plan shall prevail.
- Plants shall meet size, container, and spacing specifications. Any material not meeting specifications shall be removed and replaced at the contractor's expense.
- All tree and shrub locations shall be approved by Landscape Architect prior to planting.
- The Landscape Contractor shall grade planting beds, as required, to provide positive drainage and promote optimum plant growth.
- The Landscape Contractor shall be responsible for examining fully both the site and bid documents. Discrepancies in the documents or the actual site conditions shall be reported to the Landscape Architect in writing at the time of bidding or discovery. No account shall be made after contract completion for failure by the Landscape Contractor to report such condition or for errors on the part of the Landscape Contractor at the time of bidding.
- The Landscape Contractor shall be responsible for securing all necessary applicable permits and licenses to perform the work set forth in this plan set and the specifications.
- Plant material shall be bid as specified unless unavailable, at which time the Landscape Architect shall be notified in writing of intended changes.
- All questions concerning the plan set and/or specifications shall be directed to the Landscape Architect.
- There shall be no additions, deletions or substitutions without written approval of the Landscape Architect.
- The Landscape Contractor shall guarantee, in writing, plant survivability. Trees and palms for twelve (12) months, shrubs and groundcovers for ninety (90) days and sod for sixty (60) days from final acceptance by the Owner or Owner's representative.
- All dimensions to be field-checked by the Landscape Contractor prior to landscape material installation. Discrepancies shall be reported immediately to the Landscape Architect.
- All materials must be as specified on the landscape plan. If materials or labor do not adhere to specifications, they will be rejected by the Landscape Architect with proper installation carried out by the Landscape Contractor at no additional cost.
- Existing sod shall be removed as necessary to accommodate new plantings
- All existing trees on site shall be protected from damage during construction - See existing tree protection fence detail.
- Any existing landscape and hardscape areas that are unnecessarily disturbed during the landscape installation shall be restored to original conditions by the Landscape Contractor.
- The Landscape Contractor will be responsible for the collection, removal, and proper disposal of any and all debris generated during the installation of this project.
- All landscape areas to have a positive drainage away from buildings and structures. Finished grade of landscape areas to be at or below the grade of adjacent sidewalks, slabs or VUA
- Trees installed within 5' of a utility easement, underground utilities or any public infrastructure shall utilize a root barrier system.

IRRIGATION NOTES:

- All landscape areas shall be provided with a fully automatically operated irrigation system. Irrigation system shall provide complete coverage of all plant materials. This system should have rain sensor and should automatically shut off when raining. Irrigation system to comply with applicable jurisdictional requirements.
- Irrigation system to use potable water.



Sunshine State
One Call
811
Know what's below.
Call before you dig.



LANDSCAPE ARCHITECTURE
LAND PLANNING
URBAN DESIGN
2208 NE 26TH STREET, #1
FORT LAUDERDALE, FLORIDA 33306 USA
TEL: 954.333.8259
www.andresmontero.com
LC2600598

Rev	Date	Description
1		
2		
3		
4		
5		
6		

Sheet Title:
**LANDSCAPE DETAILS
& GENERAL NOTES**

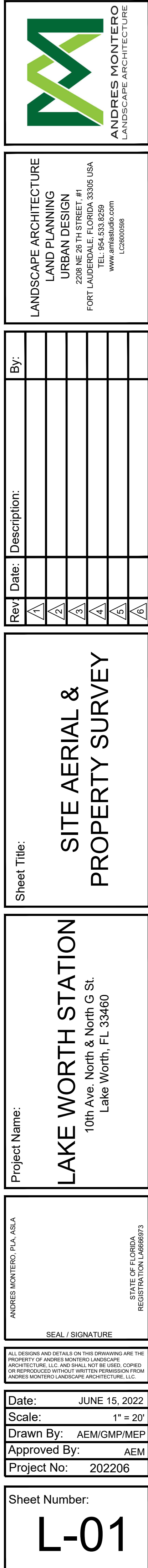
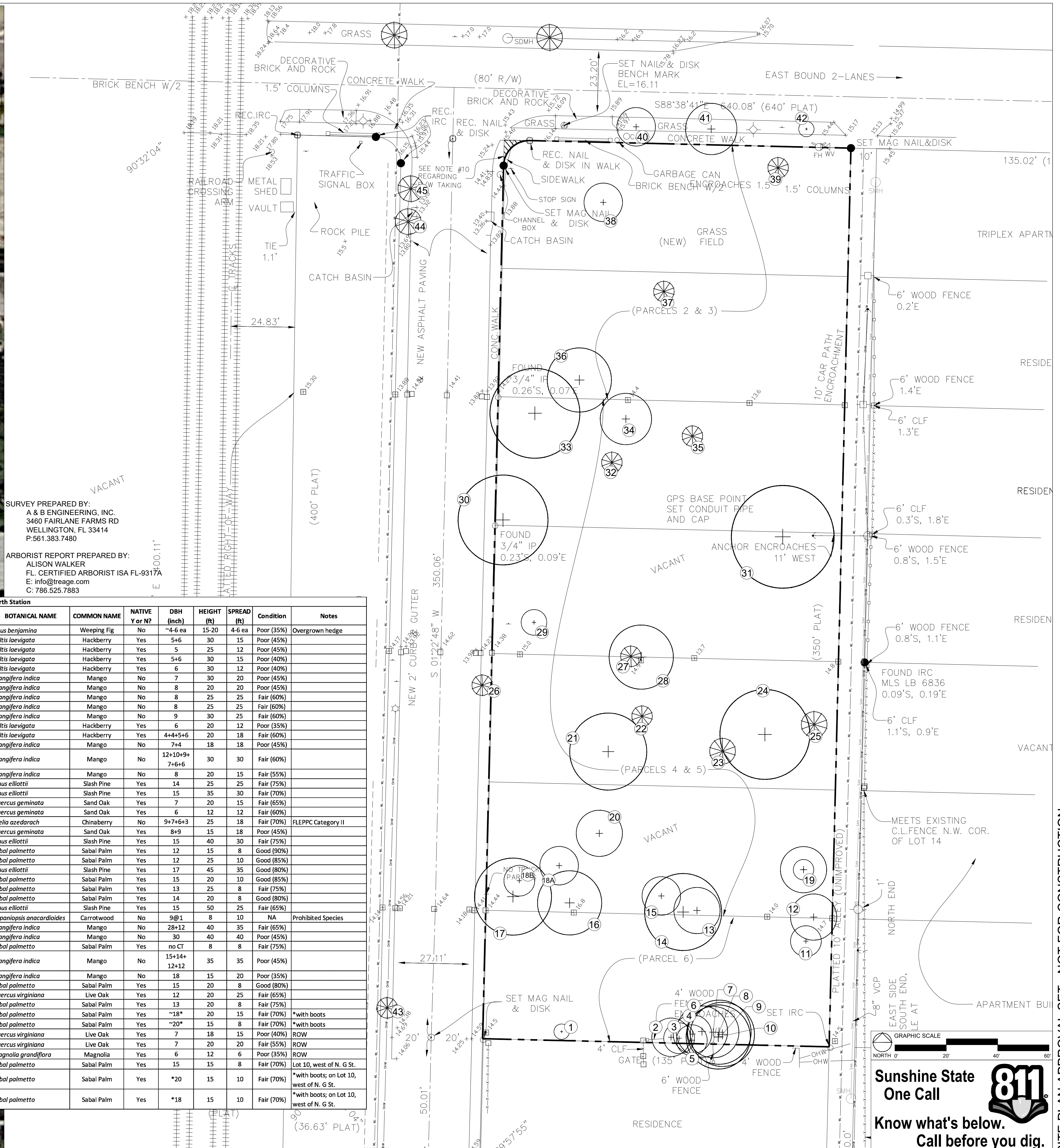
Project Name:
LAKE WORTH STATION
10th Ave. North & North G St.
Lake Worth, FL 33460

SEAL / SIGNATURE

Date: JUNE 15, 2022
Scale: 1" = 20'
Drawn By: AEM/GMP/MEP
Approved By: AEM
Project No: 202206

Sheet Number:
L-04

SITE PLAN APPROVAL SET - NOT FOR CONSTRUCTION



SITE PLAN APPROVAL SET - NOT FOR CONSTRUCTION

SITE LIGHTING NOTES

- A THE SITE LIGHTING SHOWN HAS BEEN DESIGNED WITH A COMPUTERIZED POINT BY POINT PHOTOMETRIC LAYOUT.
- B SITE LIGHTING SHALL BE INSTALLED AS SPECIFIED ON THIS DRAWING. NO FIXTURE SUBSTITUTION WILL BE ACCEPTED BY THIS OFFICE. THIS WILL BE ENABLE LIGHTING CERTIFICATION LETTER TO BE DONE BY OUR OFFICE.
- C IF ANY SITE LIGHTING SUBSTITUTION IS MADE, CERTIFICATION LETTER & TEST FOR LIGHTING SHALL BE SIGNED & SEALED BY AN INDEPENDENT PROFESSIONAL ENGINEER.
- D THE POLE MANUFACTURER SHALL SUPPLY ANY REQ'D CERTIFICATION FOR THE RECOMMENDED BURIAL DEPTH TO COMPLY WITH FLORIDA BUILDING CODE REQUIREMENTS.
- E SOIL SHALL BE TESTED AND IF REQUIRED A CONCRETE FOOTING SHALL BE DONE FOR THE POLE.

ALL REPORTS, PLANS, SPECIFICATIONS AND COMPUTER FILES RELATING TO THIS PROJECT ARE THE PROPERTY OF THE MARTIN ARCHITECTURAL GROUP. THE MARTIN ARCHITECTURAL GROUP RESERVES ALL COPYRIGHT AND DESIGN RIGHTS. REPRODUCTION OR TRANSMISSION OF ANY PART OF THESE REPORTS, PLANS, SPECIFICATIONS AND COMPUTER FILES WITHOUT THE WRITTEN PERMISSION OF THE MARTIN ARCHITECTURAL GROUP VIOLATES THE COPYRIGHT LAWS OF THE UNITED STATES AND WILL BE SUBJECT TO LITIGATION. © 2024, The Martin Architectural Group, P.C.

THE MARTIN ARCHITECTURAL GROUP, P.C.

ARCHITECTS AND LAND PLANNERS
A PROFESSIONAL CORPORATION

6810 Lyons Technology Circle, Suite 185, Coconut Creek FL,
33073
P (954) 428-1618 F (954) 428-4416

P.A.: SL
P.M.: DFH
DRAWN BY: JVS
PROJECT NO.: 222028

NO.	REVISION	DATE	REVISION PER SPRT #1
1		08/15/2022	

PERMIT SET

PHOTOMETRIC SITE
PLAN

LAKE WORTH STATION
LAKE WORTH BEACH, FLORIDA



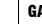

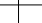
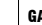
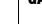
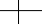


SCALE: AS NOTED
DATE: 2022/04/06

E301

© 2024, The Martin Architectural Group, P.C.

GENERAL DISCLAIMER:
ANY DESIGN CHANGES, TO THE SYSTEM COVERED BY THESE PLANS WITHOUT PRIOR APPROVAL OF THE ENGINEER WHO PREPARED THESE PLANS, WILL NULL AND VOID THESE PLANS AND THE REVISED INSTALLATION. IN ADDITION, ALL EXPENSES ASSOCIATED WITH RETURNING THE SYSTEM TO ITS ORIGINAL DESIGN WILL BE THE RESPONSIBILITY OF THE COMPANY WHICH APPROVED THESE CHANGES. FINAL BID TO INCLUDE PERMIT COMMENTS.

FORMICA & ASSOCIATES inc.
Consulting Engineers
Celebrating 40 years!
980 N. Federal Highway
Suite 110
Boca Raton, FL 33432
Tel: (561) 368-3611
License No. CA 8818
www.formicaengineering.com

Luminaire Schedule							
Project: LAKE WORTH STATION - SITE - REV1 --- APR-6-2022							
Symbol	Qty	Label	Description	LLD	Len. Watts	Total Watts	
	8	BL	FC LIGHTING FCBUC_30002		0.000	28.84	231.52
	1	SA	GARDCO ECF-S-321-1_2A-WW-62-S POLE MOUNT 20' AFG		0.000	121.6	121.6
	1	SB	GARDCO ECF-S-321-700-WW-62-BLC POLE MOUNT 20' AFG		0.000	71.82	71.82
	4	SB1	GARDCO ECF-S-321-530-WW-62-BLC POLE MOUNT 20' AFG		0.000	54.87481	219.4992
	2	SD	GARDCO ECF-S-321-700-WW-62-LCL POLE MOUNT 20' AFG		0.000	71.82	143.64
	1	SD1	GARDCO ECF-S-321-530-WW-62-LCL POLE MOUNT 20' AFG		0.000	54.87481	54.87481
	2	W	GARDCO 1011-16L-700-WW-62-3		0.000	38.4	76.8
	1	W1	GARDCO 1011-16L-200-WW-62-4		0.000	12	12
	4	LA	HADCO BROWN-SP1		0.000	33	132
	2	LB	BK LIGHTING HP2-L8D-TB-E65-SP-A3-ccc-12-MET-AH		0.000	7	14

Calculation Summary					
Project: LAKE WORTH STATION - SITE - REV1 --- APR-6-2022					
Label	Avg	Max	Min	Avg/Min	Max/Min
PARK & DRIVE	2.17	5.8	0.6	3.62	9.67
PROPERTY LINE - 0' AG HORIZONTAL	0.06	0.32	0.00	N.A.	N.A.
PROPERTY LINE - 0' AG VERTICAL	0.06	0.31	0.00	N.A.	N.A.

FIXTURE TYPE SA, SB, SC, SD & SE.
GARDCO ECOFORM ECF-S SERIES,
PER FIXTURE SCHEDULE.

GARDCO INFRARED MOTION RESPONSE
SENSOR AND MODULE WITH "IMR17" OR
"IMR3" LENS. PROVIDE "CM50" AUTOMATIC
PROFILE DIMMING ON EACH LUMINAIRE.
FIXTURE WILL AUTOMATICALLY DIM TO
50% FOR 8 HOURS PER NIGHT DURATION,
ONLY INTERRUPTED BY MOTION. 5
MINUTES AFTER NO MOTION WILL RETURN
TO THE AUTOMATIC PROFILE SCHEDULE

UTILITY STRUCTURES, INC. SQUARE
TAPERED CONCRETE DIRECT BURIAL
POLE. CONFIRM O.A. LENGTH WITH
CERTIFIED WIND LOAD
CALCULATIONS.

3 #10 THHN INSIDE
POLE.

HANDHOLE, WITH FUSE HOLDER
AND 3AMP FUSE

FURNISH AND INSTALL PULLBOX

FINISH GRADE

EXOTHERMIC WELD
CONDUIT OUT TO THE NEXT POLE
(EXCEPT FOR THE LAST BOX)

CONDUIT IN FROM PREVIOUS PULL BOX

#8 AWG GROUND

5/8"X 10' COPPER CLAD STEEL GROUND ROD

PROVIDE WIND LOAD CALCULATIONS
FOR 170MPH, SIGNED AND SEALED BY
A FLORIDA ENGINEER. CONFIRM
BURIAL DEPTH FOR EACH POLE
ASSEMBLY / MOUNTING HEIGHT.

PROVIDE BACKFILL
AS REQUIRED FOR
WIND LOADING

2 POLE MOUNTING DETAIL
NOT TO SCALE

1 PHOTOMETRIC SITE PLAN
1" = 20'-0"

Site & Area

EcoForm

ECF-S small area light

Gardco EcoForm Gen-2 combines economy with performance in an LED area luminaire. Capable of delivering up to 27,800 lumens or more in a compact, low profile LED luminaire, EcoForm offers a new level of customer value. EcoForm features an innovative retrofit arm kit, simplifying site conversions to LED by eliminating the need to drill additional holes in most existing poles. Integral control systems available for further energy savings. Includes Service Tag, our innovative way to provide assistance throughout the life of the product.

Ordering guide example: ECF-S-64L-900-NW-G2-AR-S-120-HIS-MGY

Prefix	Number of LEDs	Drive Current	LED Color - Generation	Mounting	Distribution	Voltage
ECF-S	32L	700	NW-G2	AR	BLC	UNV
ECF-S EcoForm site and area, small	32L 32 LEDs (2 modules)	365 365mA 530 530mA 700 700mA 1A 1000mA 1.2A 1200mA	NW-G2 Warm White 3000K, 70CR Generation 2 Neutral White 4000K, 70CR Generation 2 Cool White 5000K, 70CR Generation 2	AR Arm Mount (standard) The following mounting kits must be ordered separately (See accessories) SP Slip Fitter Mount (fits to 2 1/2" O.D. tenon) WS Wall mount with surface conduit, rear entry permitted, retrofit arm mount kit	Type 2 2-Type 2 2-90 Rotated left 90° 2-270 Rotated right 270° Type 3 3-Type 3 3-90 Rotated left 90° 3-270 Rotated right 270° Type 4 4-Type 4 4-90 Rotated left 90° 4-270 Rotated right 270° Type 5 5-Type 5 5-SW Type SW	120 120V 208 208V 240 240V 277 277V 347 347V 480 480V UNV 120-277V (50/60Hz) HVV 347-480V (50/60Hz) LED Corner Optic Left LED Corner Optic Right
Options	Dimming controls	Medium sensing lens	Photo-sensing	Electrical	Luminaire	Finish
CM50	IMR7	IMR7	IMR7	TLRDS	BS	CC
DD** 0-10V External dimming (For controls by others)	IMR7** Integral with #7 lens	PCB** Photocontrol Button (For controls by others)	Failing FPF Single (120, 277, 347VAC) FPF2 Double (208, 240, 480VAC) FPF3 Single (120, 277, 347VAC) FPF4 Double (208, 240, 480VAC) FPF5 Canadian Double Full (208, 240, 480VAC) SP2 Surge Protection (UL94 standard) SP2 Increased 20kA	Square Pole Adapter Included in standard product TSP Terminal Block RSP Round Pole Adapter (fits to 3" - 3.9" O.D. pole) HIS* Internal House Side Shield RAL Specify optional color or RAL (per RAL7024) Custom color (Must supply color chip for required factory quote)	Textured BK Black WH White BR Bronze DG Dark Gray MOY Medium Gray	CC

- BL-MR837 equipped with out-boarded sensor housing when voltage is HVU (347-480V).
- Mounts to a 4" round pole with adapter included for square poles.
- Limited to a maximum of 45 degrees aiming above horizontal.
- Not available with motion sensor.
- Not available with photocontrol.
- Must specify a motion sensor lens.
- Not available in 347 or 480V.
- Must specify input voltage.
- TLRDS, TLR27 and TLRPC receptacle pins 4 & 5 are capped off when ordered with any of the following control options:
 - FAWS or LLC.
 - Order photocontrol separately with TLRDS/7.
- Not available with DCC.
- Not available with SF and WS. RFA6 provided with black finish standard.
- HIS not available with Type 5, SW, BLC, BLC-90, BLC-270, LCL, TLRDS or TLRPC.
- 0-10V dimming driver standard.
- LCL and RCL not available with 48L-1.2A or 64L-1A.
- Not available with DCC, DCC, and FAWS dimming control options.



ECF-S_EcoForm_area_small 01/22 page 1 of 9

Site & Area

EcoForm

ECF-S small area light

Gardco EcoForm Gen-2 combines economy with performance in an LED area luminaire. Capable of delivering up to 27,800 lumens or more in a compact, low profile LED luminaire, EcoForm offers a new level of customer value. EcoForm features an innovative retrofit arm kit, simplifying site conversions to LED by eliminating the need to drill additional holes in most existing poles. Integral control systems available for further energy savings. Includes Service Tag, our innovative way to provide assistance throughout the life of the product.

Ordering guide example: ECF-S-64L-900-NW-G2-AR-S-120-HIS-MGY

Prefix	Number of LEDs	Drive Current	LED Color - Generation	Mounting	Distribution	Voltage
ECF-S	32L	700	NW-G2	AR	BLC	UNV
ECF-S EcoForm site and area, small	32L 32 LEDs (2 modules)	365 365mA 530 530mA 700 700mA 1A 1000mA 1.2A 1200mA	NW-G2 Warm White 3000K, 70CR Generation 2 Neutral White 4000K, 70CR Generation 2 Cool White 5000K, 70CR Generation 2	AR Arm Mount (standard) The following mounting kits must be ordered separately (See accessories) SP Slip Fitter Mount (fits to 2 1/2" O.D. tenon) WS Wall mount with surface conduit, rear entry permitted, retrofit arm mount kit	Type 2 2-Type 2 2-90 Rotated left 90° 2-270 Rotated right 270° Type 3 3-Type 3 3-90 Rotated left 90° 3-270 Rotated right 270° Type 4 4-Type 4 4-90 Rotated left 90° 4-270 Rotated right 270° Type 5 5-Type 5 5-SW Type SW	120 120V 208 208V 240 240V 277 277V 347 347V 480 480V UNV 120-277V (50/60Hz) HVV 347-480V (50/60Hz) LED Corner Optic Left LED Corner Optic Right
Options	Dimming controls	Medium sensing lens	Photo-sensing	Electrical	Luminaire	Finish
CM50	IMR7	IMR7	IMR7	TLRDS	BS	CC
DD** 0-10V External dimming (For controls by others)	IMR7** Integral with #7 lens	PCB** Photocontrol Button (For controls by others)	Failing FPF Single (120, 277, 347VAC) FPF2 Double (208, 240, 480VAC) FPF3 Single (120, 277, 347VAC) FPF4 Double (208, 240, 480VAC) FPF5 Canadian Double Full (208, 240, 480VAC) SP2 Surge Protection (UL94 standard) SP2 Increased 20kA	Square Pole Adapter Included in standard product TSP Terminal Block RSP Round Pole Adapter (fits to 3" - 3.9" O.D. pole) HIS* Internal House Side Shield RAL Specify optional color or RAL (per RAL7024) Custom color (Must supply color chip for required factory quote)	Textured BK Black WH White BR Bronze DG Dark Gray MOY Medium Gray	CC

- BL-MR837 equipped with out-boarded sensor housing when voltage is HVU (347-480V).
- Mounts to a 4" round pole with adapter included for square poles.
- Limited to a maximum of 45 degrees aiming above horizontal.
- Not available with motion sensor.
- Not available with photocontrol.
- Must specify a motion sensor lens.
- Not available in 347 or 480V.
- Must specify input voltage.
- TLRDS, TLR27 and TLRPC receptacle pins 4 & 5 are capped off when ordered with any of the following control options:
 - FAWS or LLC.
 - Order photocontrol separately with TLRDS/7.
- Not available with DCC.
- Not available with SF and WS. RFA6 provided with black finish standard.
- HIS not available with Type 5, SW, BLC, BLC-90, BLC-270, LCL, TLRDS or TLRPC.
- 0-10V dimming driver standard.
- LCL and RCL not available with 48L-1.2A or 64L-1A.
- Not available with DCC, DCC, and FAWS dimming control options.



ECF-S_EcoForm_area_small 01/22 page 1 of 9

Site & Area

EcoForm

ECF-S small area light

Gardco EcoForm Gen-2 combines economy with performance in an LED area luminaire. Capable of delivering up to 27,800 lumens or more in a compact, low profile LED luminaire, EcoForm offers a new level of customer value. EcoForm features an innovative retrofit arm kit, simplifying site conversions to LED by eliminating the need to drill additional holes in most existing poles. Integral control systems available for further energy savings. Includes Service Tag, our innovative way to provide assistance throughout the life of the product.

Ordering guide example: ECF-S-64L-900-NW-G2-AR-S-120-HIS-MGY

Prefix	Number of LEDs	Drive Current	LED Color - Generation	Mounting	Distribution	Voltage
ECF-S	32L	530	NW-G2	AR	BLC	UNV
ECF-S EcoForm site and area, small	32L 32 LEDs (2 modules)	365 365mA 530 530mA 700 700mA 1A 1000mA 1.2A 1200mA	NW-G2 Warm White 3000K, 70CR Generation 2 Neutral White 4000K, 70CR Generation 2 Cool White 5000K, 70CR Generation 2	AR Arm Mount (standard) The following mounting kits must be ordered separately (See accessories) SP Slip Fitter Mount (fits to 2 1/2" O.D. tenon) WS Wall mount with surface conduit, rear entry permitted, retrofit arm mount kit	Type 2 2-Type 2 2-90 Rotated left 90° 2-270 Rotated right 270° Type 3 3-Type 3 3-90 Rotated left 90° 3-270 Rotated right 270° Type 4 4-Type 4 4-90 Rotated left 90° 4-270 Rotated right 270° Type 5 5-Type 5 5-SW Type SW	120 120V 208 208V 240 240V 277 277V 347 347V 480 480V UNV 120-277V (50/60Hz) HVV 347-480V (50/60Hz) LED Corner Optic Left LED Corner Optic Right
Options	Dimming controls	Medium sensing lens	Photo-sensing	Electrical	Luminaire	Finish
CM50	IMR7	IMR7	IMR7	TLRDS	BS	CC
DD** 0-10V External dimming (For controls by others)	IMR7** Integral with #7 lens	PCB** Photocontrol Button (For controls by others)	Failing FPF Single (120, 277, 347VAC) FPF2 Double (208, 240, 480VAC) FPF3 Single (120, 277, 347VAC) FPF4 Double (208, 240, 480VAC) FPF5 Canadian Double Full (208, 240, 480VAC) SP2 Surge Protection (UL94 standard) SP2 Increased 20kA	Square Pole Adapter Included in standard product TSP Terminal Block RSP Round Pole Adapter (fits to 3" - 3.9" O.D. pole) HIS* Internal House Side Shield RAL Specify optional color or RAL (per RAL7024) Custom color (Must supply color chip for required factory quote)	Textured BK Black WH White BR Bronze DG Dark Gray MOY Medium Gray	CC

- BL-MR837 equipped with out-boarded sensor housing when voltage is HVU (347-480V).
- Mounts to a 4" round pole with adapter included for square poles.
- Limited to a maximum of 45 degrees aiming above horizontal.
- Not available with motion sensor.
- Not available with photocontrol.
- Must specify a motion sensor lens.
- Not available in 347 or 480V.
- Must specify input voltage.
- TLRDS, TLR27 and TLRPC receptacle pins 4 & 5 are capped off when ordered with any of the following control options:
 - FAWS or LLC.
 - Order photocontrol separately with TLRDS/7.
- Not available with DCC.
- Not available with SF and WS. RFA6 provided with black finish standard.
- HIS not available with Type 5, SW, BLC, BLC-90, BLC-270, LCL, TLRDS or TLRPC.
- 0-10V dimming driver standard.
- LCL and RCL not available with 48L-1.2A or 64L-1A.
- Not available with DCC, DCC, and FAWS dimming control options.



ECF-S_EcoForm_area_small 01/22 page 1 of 9

Site & Area

EcoForm

ECF-S small area light

Gardco EcoForm Gen-2 combines economy with performance in an LED area luminaire. Capable of delivering up to 27,800 lumens or more in a compact, low profile LED luminaire, EcoForm offers a new level of customer value. EcoForm features an innovative retrofit arm kit, simplifying site conversions to LED by eliminating the need to drill additional holes in most existing poles. Integral control systems available for further energy savings. Includes Service Tag, our innovative way to provide assistance throughout the life of the product.

Ordering guide example: ECF-S-64L-900-NW-G2-AR-S-120-HIS-MGY

Prefix	Number of LEDs	Drive Current	LED Color - Generation	Mounting	Distribution	Voltage
ECF-S	32L	700	NW-G2	AR	BLC	UNV
ECF-S EcoForm site and area, small	32L 32 LEDs (2 modules)	365 365mA 530 530mA 700 700mA 1A 1000mA 1.2A 1200mA	NW-G2 Warm White 3000K, 70CR Generation 2 Neutral White 4000K, 70CR Generation 2 Cool White 5000K, 70CR Generation 2	AR Arm Mount (standard) The following mounting kits must be ordered separately (See accessories) SP Slip Fitter Mount (fits to 2 1/2" O.D. tenon) WS Wall mount with surface conduit, rear entry permitted, retrofit arm mount kit	Type 2 2-Type 2 2-90 Rotated left 90° 2-270 Rotated right 270° Type 3 3-Type 3 3-90 Rotated left 90° 3-270 Rotated right 270° Type 4 4-Type 4 4-90 Rotated left 90° 4-270 Rotated right 270° Type 5 5-Type 5 5-SW Type SW	120 120V 208 208V 240 240V 277 277V 347 347V 480 480V UNV 120-277V (50/60Hz) HVV 347-480V (50/60Hz) LED Corner Optic Left LED Corner Optic Right
Options	Dimming controls	Medium sensing lens	Photo-sensing	Electrical	Luminaire	Finish
CM50	IMR7	IMR7	IMR7	TLRDS	BS	CC
DD** 0-10V External dimming (For controls by others)	IMR7** Integral with #7 lens	PCB** Photocontrol Button (For controls by others)	Failing FPF Single (120, 277, 347VAC) FPF2 Double (208, 240, 480VAC) FPF3 Single (120, 277, 347VAC) FPF4 Double (208, 240, 480VAC) FPF5 Canadian Double Full (208, 240, 480VAC) SP2 Surge Protection (UL94 standard) SP2 Increased 20kA	Square Pole Adapter Included in standard product TSP Terminal Block RSP Round Pole Adapter (fits to 3" - 3.9" O.D. pole) HIS* Internal House Side Shield RAL Specify optional color or RAL (per RAL7024) Custom color (Must supply color chip for required factory quote)	Textured BK Black WH White BR Bronze DG Dark Gray MOY Medium Gray	CC

- BL-MR837 equipped with out-boarded sensor housing when voltage is HVU (347-480V).
- Mounts to a 4" round pole with adapter included for square poles.
- Limited to a maximum of 45 degrees aiming above horizontal.
- Not available with motion sensor.
- Not available with photocontrol.
- Must specify a motion sensor lens.
- Not available in 347 or 480V.
- Must specify input voltage.
- TLRDS, TLR27 and TLRPC receptacle pins 4 & 5 are capped off when ordered with any of the following control options:
 - FAWS or LLC.
 - Order photocontrol separately with TLRDS/7.
- Not available with DCC.
- Not available with SF and WS. RFA6 provided with black finish standard.
- HIS not available with Type 5, SW, BLC, BLC-90, BLC-270, LCL, TLRDS or TLRPC.
- 0-10V dimming driver standard.
- LCL and RCL not available with 48L-1.2A or 64L-1A.
- Not available with DCC, DCC, and FAWS dimming control options.



ECF-S_EcoForm_area_small 01/22 page 1 of 9

Site & Area

EcoForm

ECF-S small area light

Gardco EcoForm Gen-2 combines economy with performance in an LED area luminaire. Capable of delivering up to 27,800 lumens or more in a compact, low profile LED luminaire, EcoForm offers a new level of customer value. EcoForm features an innovative retrofit arm kit, simplifying site conversions to LED by eliminating the need to drill additional holes in most existing poles. Integral control systems available for further energy savings. Includes Service Tag, our innovative way to provide assistance throughout the life of the product.

Ordering guide example: ECF-S-64L-900-NW-G2-AR-S-120-HIS-MGY

Prefix	Number of LEDs	Drive Current	LED Color - Generation	Mounting	Distribution	Voltage
ECF-S	32L	530	NW-G2	AR	LCL	UNV
ECF-S EcoForm site and area, small	32L 32 LEDs (2 modules)	365 365mA 530 530mA 700 700mA 1A 1000mA 1.2A 1200mA	NW-G2 Warm White 3000K, 70CR Generation 2 Neutral White 4000K, 70CR Generation 2 Cool White 5000K, 70CR Generation 2	AR Arm Mount (standard) The following mounting kits must be ordered separately (See accessories) SP Slip Fitter Mount (fits to 2 1/2" O.D. tenon) WS Wall mount with surface conduit, rear entry permitted, retrofit arm mount kit	Type 2 2-Type 2 2-90 Rotated left 90° 2-270 Rotated right 270° Type 3 3-Type 3 3-90 Rotated left 90° 3-270 Rotated right 270° Type 4 4-Type 4 4-90 Rotated left 90° 4-270 Rotated right 270° Type 5 5-Type 5 5-SW Type SW	120 120V 208 208V 240 240V 277 277V 347 347V 480 480V UNV 120-277V (50/60Hz) HVV 347-480V (50/60Hz) LED Corner Optic Left LED Corner Optic Right
Options	Dimming controls	Medium sensing lens	Photo-sensing	Electrical	Luminaire	Finish
CM50	IMR7	IMR7	IMR7	TLRDS	BS	CC
DD** 0-10V External dimming (For controls by others)	IMR7** Integral with #7 lens	PCB** Photocontrol Button (For controls by others)	Failing FPF Single (120, 277, 347VAC) FPF2 Double (208, 240, 480VAC) FPF3 Single (120, 277, 347VAC) FPF4 Double (208, 240, 480VAC) FPF5 Canadian Double Full (208, 240, 480VAC) SP2 Surge Protection (UL94 standard) SP2 Increased 20kA	Square Pole Adapter Included in standard product TSP Terminal Block RSP Round Pole Adapter (fits to 3" - 3.9" O.D. pole) HIS* Internal House Side Shield RAL Specify optional color or RAL (per RAL7024) Custom color (Must supply color chip for required factory quote)	Textured BK Black WH White BR Bronze DG Dark Gray MOY Medium Gray	CC

- BL-MR837 equipped with out-boarded sensor housing when voltage is HVU (347-480V).
- Mounts to a 4" round pole with adapter included for square poles.
- Limited to a maximum of 45 degrees aiming above horizontal.
- Not available with motion sensor.
- Not available with photocontrol.
- Must specify a motion sensor lens.
- Not available in 347 or 480V.
- Must specify input voltage.
- TLRDS, TLR27 and TLRPC receptacle pins 4 & 5 are capped off when ordered with any of the following control options:
 - FAWS or LLC.
 - Order photocontrol separately with TLRDS/7.
- Not available with DCC.
- Not available with SF and WS. RFA6 provided with black finish standard.
- HIS not available with Type 5, SW, BLC, BLC-90, BLC-270, LCL, TLRDS or TLRPC.
- 0-10V dimming driver standard.
- LCL and RCL not available with 48L-1.2A or 64L-1A.
- Not available with DCC, DCC, and FAWS dimming control options.



ECF-S_EcoForm_area_small 01/22 page 1 of 9

ECF-S EcoForm small Area luminaire

EcoForm Accessories** (ordered separately, field installed)

Shading Accessories	Footcandle
<p>21. Not available with Type 5 or SW optics</p> <p>21. Consult Signify to confirm whether specific accessories are BAA-compliant.</p>	
<p>House Side shield</p> <p>HS-32-H* Internal House Side Shield for 32 LEDs (2 modules)</p> <p>HS-48-H* Internal House Side Shield for 48 LEDs (3 modules)</p> <p>HS-64-H* Internal House Side Shield for 64 LEDs (4 modules)</p> <p>Optic at 90° or 270° orientation</p> <p>HS-32-V* Internal House Side Shield for 32 LEDs (2 modules)</p> <p>HS-48-V* Internal House Side Shield for 48 LEDs (3 modules)</p> <p>HS-64-V* Internal House Side Shield for 64 LEDs (4 modules)</p>	
<p>Luminaire Accessories</p> <p>ECF-BD-G2 Bird deterrent</p> <p>ECF-ARM-G2 (F) Retrofit Arm Mount kit</p> <p>ECF-SF-G2 (F) Slip Fitter Mount (fits to 2 3/8" O.D. tenon)</p> <p>ECF-WB-G2 (F) Wall mount with surface conduit, rear entry permitted</p> <p>EcoForm PTF2 (pole top fitter fits 23 9/16" OD x 4" depth tenon)</p> <p>PTF2-ECF-S/L-1-90-(F) 1 luminaire at 90°</p> <p>PTF2-ECF-S/L-2-90-(F) 2 luminaires at 90°</p> <p>PTF2-ECF-S/L-3-90-(F) 3 luminaires at 90°</p> <p>PTF2-ECF-S/L-4-90-(F) 4 luminaires at 90°</p> <p>PTF2-ECF-S/L-3-120-(F) 3 luminaires at 120°</p> <p>(F) = Specify finish</p> <p>EcoForm PTF4 (pole top fitter fits 31 3/4" OD x 4" depth tenon)</p> <p>PTF4-ECF-S/L-1-90-(F) 1 luminaire at 90°</p> <p>PTF4-ECF-S/L-2-90-(F) 2 luminaires at 90°</p> <p>PTF4-ECF-S/L-3-90-(F) 3 luminaires at 90°</p> <p>PTF4-ECF-S/L-4-90-(F) 4 luminaires at 90°</p> <p>PTF4-ECF-S/L-3-90-(F) 3 luminaires at 90°</p> <p>PTF4-ECF-S/L-4-90-(F) 4 luminaires at 90°</p> <p>PTF4-ECF-S/L-3-120-(F) 3 luminaires at 120°</p> <p>PTF4-ECF-S/L-4-120-(F) 4 luminaires at 120°</p>	

Ready to Go configurations (when ordered with the "RS-" catalog code, the following configurations will ship in 2 weeks):

Catalog Number	12NC	Catalog Number	12NC
RS-ECF-S-32L-1A-NW-G2-AR-3-UNV-BZ	912405466002	RS-ECF-S-64L-1A-NW-G2-AR-3-UNV-BK	912405345580
RS-ECF-S-32L-1A-NW-G2-AR-3-UNV-MGY	912405466003	RS-ECF-S-64L-1A-NW-G2-AR-4-UNV-BK	912405466016
RS-ECF-S-32L-1A-NW-G2-AR-3-UNV-BK	912405345554	RS-ECF-S-64L-1A-NW-G2-AR-4-UNV-MGY	912405345561
RS-ECF-S-32L-1A-NW-G2-AR-4-UNV-BZ	912405466004	RS-ECF-S-64L-1A-NW-G2-AR-4-UNV-BK	912405345561
RS-ECF-S-32L-1A-NW-G2-AR-4-UNV-MGY	912405466005	RS-ECF-S-64L-1A-NW-G2-AR-5-UNV-BZ	912405466018
RS-ECF-S-32L-1A-NW-G2-AR-4-UNV-BK	912405345555	RS-ECF-S-64L-1A-NW-G2-AR-5-UNV-MGY	912405466019
RS-ECF-S-32L-1A-NW-G2-AR-5-UNV-BZ	912405466006	RS-ECF-S-64L-1A-NW-G2-AR-5-UNV-BK	912405345562
RS-ECF-S-32L-1A-NW-G2-AR-5-UNV-MGY	912405466007	RS-ECF-RAM-G2-DGY	912405466497
RS-ECF-S-32L-1A-NW-G2-AR-5-UNV-BK	912405345556	RS-ECF-RAM-G2-MGY	912405466498
RS-ECF-S-48L-1A-NW-G2-AR-3-UNV-BZ	912405466008	RS-ECF-RAM-G2-WH	912405466495
RS-ECF-S-48L-1A-NW-G2-AR-3-UNV-MGY	912405466009	RS-ECF-RAM-G2-BK	912405466494
RS-ECF-S-48L-1A-NW-G2-AR-3-UNV-BK	912405345557	RS-HIS-32-H	912405466489
RS-ECF-S-48L-1A-NW-G2-AR-4-UNV-BZ	912405466010	RS-HIS-32-H	912405466491
RS-ECF-S-48L-1A-NW-G2-AR-4-UNV-MGY	912405466011	RS-HIS-64-H	912405466493
RS-ECF-S-48L-1A-NW-G2-AR-4-UNV-BK	912405345558		
RS-ECF-S-48L-1A-NW-G2-AR-5-UNV-BZ	912405466012		
RS-ECF-S-48L-1A-NW-G2-AR-5-UNV-MGY	912405466013		
RS-ECF-S-48L-1A-NW-G2-AR-5-UNV-BK	912405345559		
RS-ECF-S-64L-1A-NW-G2-AR-3-UNV-BZ	912405466014		
RS-ECF-S-64L-1A-NW-G2-AR-3-UNV-MGY	912405466015		

ECF-S_EcoForm_area_small 01/22 page 2 of 9

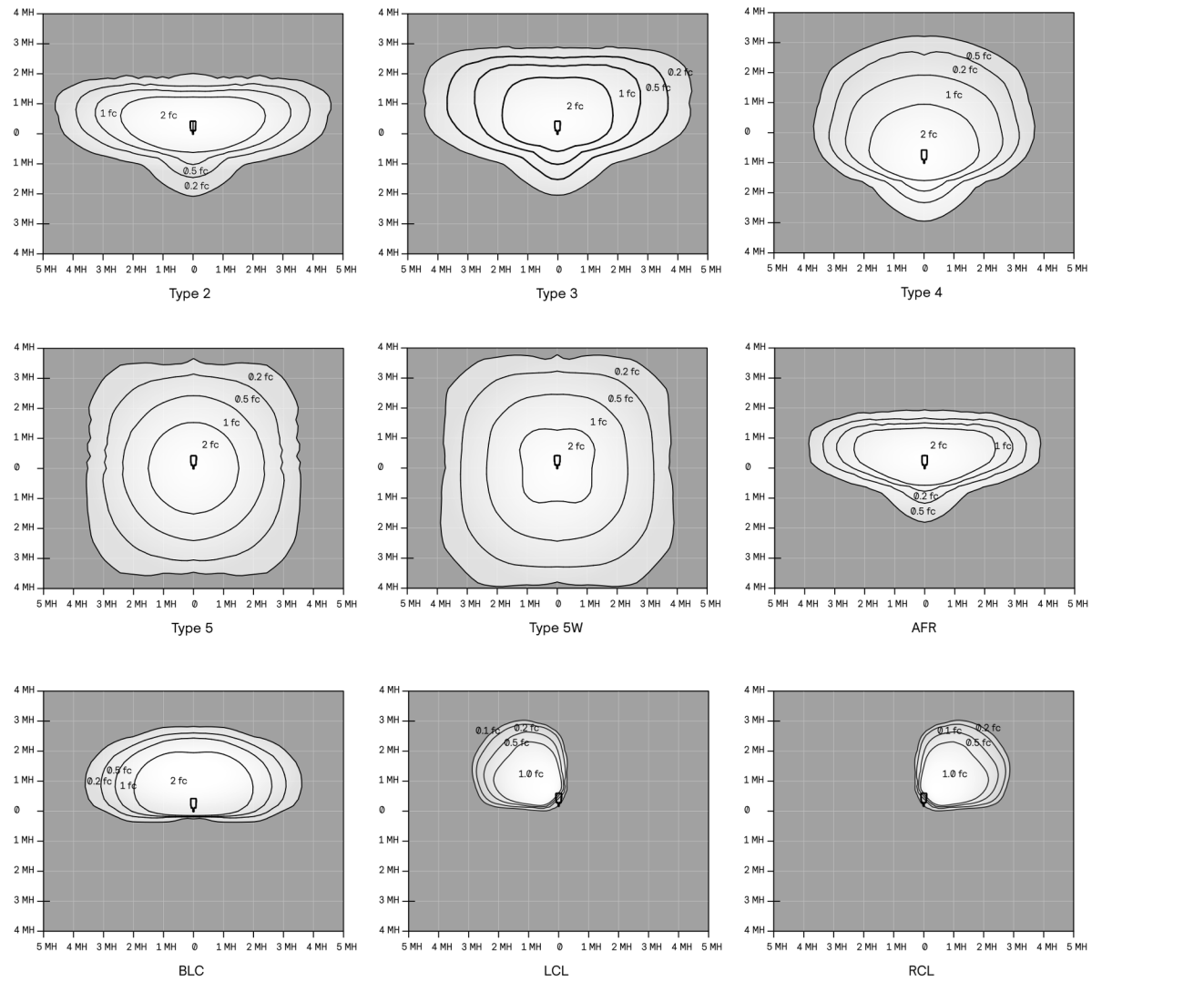
ECF-S EcoForm small Area luminaire

Predicted Lumen Depreciation Data

Ambient Temperature °C	Driver mA	Calculated Lx Hours	Lx per TM-21	Lumen Maintenance % at 60,000 hrs
25°C	up to 1200 mA	>100,000 hours	>120,000 hours	>99%

Optical Distributions

Based on configuration ECF-S-48L-1A-NW-G2 (59W) mounted at 20ft.



- Features**
1. Housing/Construction A360 die cast aluminum, able to remove through from hoists with ease.
2. Screen: Adjustable knuckle stem provides range of rotation, prevents failure from pointing or twisting. Vibration resistant, finished with black oxide stainless steel screen. Driver mounts directly onto housing for easy management. All gaskets are 100% molded silicone.
3. Electrical: 3AC (on high setting) Input voltage range: 340V-120-270V. Pre-wired with 12-2 pin cable for ease of connection. Includes I/O Analog Glass 2 wiring for dimming, capped off if you prefer control wiring with line - live wires only.
3. LED Board: Single COB LED driver.
4. Controls: Cables with AOC and +10W digital. Design allows for multiple applications with 5 preset light outputs, use luminai strip. Remote uses class 123 remote and simply adjust the limit switch by hand.
5. Option System: Flat glass, soda lime tempered clear glass, c-channel gasket slips onto lenses without tools or RTV. Finisher pre-installed with medium flood (88%) option. Clear option requires optical lenses clip onto main reflector. Both narrow flood (22%) and wide flood (69%) options available. Components are made of injection molded plastic, painted powder coat finish and ground in accordance with IEEE E84-4: 2002 Class II.
- Options**
- Optional integral single step protection device provides single phase protection for AC power supply, low ground and over current (ground) in accordance with IEEE E84-4: 2002 Class II.
- IP66 Rating**
- Dust tight and sealed against drips of water.
- Labels**
- EUL listed to U.S. safety standards for wet locations. cETL listed to Canadian safety standards for wet locations. Manufactured to ISO 9001 Standards.
- 5-year limited warranty.

Lumen matrix								
	Amps			3000K			4000K	
Wattage	120V	277V	Narrow	Medium	Wide	Narrow	Medium	Wide
10W	80mA	50mA	995	982	932	102	1097	1023
13W	110mA	55mA	1427	1409	1337	1580	1753	1467
19W	155mA	75mA	2031	2006	1903	2249	2240	2089
27W	225mA	100mA	2797	2762	2621	3097	3087	2874
33W	275mA	120mA	3271	3230	3065	3622	3598	3372



B9_Accent_120V 01/20 page 1 of 3

Dimensions

- 6.59" (167mm)
- 1.99" (50mm)
- Ø 4.00" (103mm) Lens opening
- 10.59" (269mm)
- 6.09" (155mm)
- 7.34" (186mm)
- 10.47" (267mm)
- 6.07" (154mm)
- 6.50" (165mm)

Component	Feature/Function
1. Lens cap	Secured to shroud with two Phillips screws.
2. Exterior lens	Environmental barrier (sealing).
3. Lens gasket	Molded gasket slips onto lenses with different pre-set light levels.
4. Optical /lenses	Three clip on lenses 4A ~ NFLD. 4B ~ CFL.
5. Switch	Simple customer access for changing between different beam patterns.
6. Reflector	Designed for COB LEDs, provides uniform light distribution.
7. Shroud	Attaches to housing with two screws.
8. Housing gasket	Molded gasket provides seal for driver.
9. Housing	Attaches to stem with screw, teeth aiming angle.
10. Aiming screw	Phillips-head screw, loosen slightly to aim.
11. Driver	Class 2 driver with 0-10v dimming.
12. Mounting arm	Provides durable mounting for luminaire aiming angle.
13. Locking nut	Metal nut allows orientation of eco.

B9_Accent_120V 01/20 page 2 of 3

B-K LIGHTING **MADE IN THE USA** 559.438.5800 | INFO@BKLIGHTING.COM | BKLIGHTING.COM

THIS DOCUMENT CONTAINS PROPRIETARY INFORMATION OF B-K LIGHTING, INC. AND ITS RECEIPT OR POSSESSION DOES NOT CONVEY ANY RIGHTS TO REPRODUCE, DISCLOSE ITS CONTENTS, OR TO MANUFACTURE, USE OR SELL ANYTHING IT MAY DESCRIBE. REPRODUCTION, DISCLOSURE OR USE WITHOUT SPECIFIC WRITTEN AUTHORIZATION OF B-K LIGHTING, INC. IS STRICTLY FORBIDDEN.


09/09/2021 SKU-1108
SLR-2373-00

B-K LIGHTING | **MADE IN THE USA** | 559.438.5800 | INFO@BKLIGHTING.COM | BKLIGHTING.COM

THIS DOCUMENT CONTAINS PROPRIETARY INFORMATION OF B-K LIGHTING, INC. AND ITS RECEIPT OR POSSESSION DOES NOT CONVEY ANY RIGHTS TO REPRODUCE, DISCLOSE ITS CONTENTS, OR TO MANUFACTURE, USE OR SELL ANYTHING IT MAY DESCRIBE. REPRODUCTION, DISCLOSURE OR USE WITHOUT SPECIFIC WRITTEN AUTHORIZATION OF B-K LIGHTING, INC. IS STRICTLY FORBIDDEN.

09/09/2021 SKJ-1108
SUB-2275-00

Due to continuous development and improvement, specifications are subject to change without notice. FC Lighting reserves the right to change ball test details or specifications without notice. Product use certifies agreement to FC terms and conditions.

 US Commercial Lighting Manufacturer Since 1982


© FC Lighting, Inc. 3609 swenson ave • st. charles il • 60174 | fclighting.com | 800.900.1730

AR-DH-21121

Consult Factory for other options and configurations.


To ensure you receive proper configurations for your lighting specifications, contact us directly about any unique application requirements. This may include but not be limited to lumen output, mounting needs, or electrical requirements.

Due to continuous development and improvements, specifications are subject to change without notice. FC Lighting reserves the right to change lab test details or specifications without notice. Product use certifies agreement to FC terms and conditions.

 US Commercial Lighting Manufacturer Since 1982

© FC Lighting, Inc. 3609 swenson ave • st. charles il 60174 | fcighting.com | 800.900.1730

AR-DH-21

ALL REPORTS, PLANS, SPECIFICATIONS AND COMPUTER FILES
RELATING TO THIS PROJECT ARE THE PROPERTY OF THE
MARTIN ARCHITECTURAL GROUP. THE MARTIN ARCHITECTURAL
GROUP RESERVES ALL COMMON LAW, STATUTE AND OTHER
RESERVED RIGHTS INCLUDING THE COPY- RIGHT THEREOF.
REPRODUCTION OF THE MATERIAL HEREIN OR SUBSTANTIAL
USE WITHOUT WRITTEN PERMISSION OF THE MARTIN
ARCHITECTURAL GROUP VIOLATES THE COPYRIGHT LAWS OF
THE UNITED STATES AND WILL BE SUBJECT TO LEGAL
PROSECUTION.
©  The Martin Architectural Group, P.C.

 THE MARTIN ARCHITECTURAL GROUP, P.C.
ARCHITECTS AND PLANNERS
A PROFESSIONAL CORPORATION

6810 Lyons Technology Circle, Suite 185, Coconut Creek FL.
33073
P (954) 428-1618 F (954) 428-4416

P.A.:	SL
P.M.:	DFH
DRAWN BY:	JVS
PROJECT NO.:	222028

[illegible]


PERMIT SET

ELECTRICAL DETAILS

LAKE WORTH STATION
LAKE WORTH BEACH, FLORIDA

SCALE:	AS NOTED
DATE:	2022/04/06

E702

© , The Martin Architectural Group, P.C.

GENERAL DISCLAIMER:
ANY DESIGN CHANGES, TO THE SYSTEM COVERED BY THESE PLANS WITHOUT PRIOR APPROVAL OF THE ENGINEER WHO PREPARED THESE PLANS, WILL NULL AND VOID THESE PLANS AND THE REVISED INSTALLATION. IN ADDITION, ALL EXPENSES ASSOCIATED WITH RETURNING THE SYSTEM TO ITS ORIGINAL DESIGN WILL BE THE RESPONSIBILITY OF THE COMPANY WHICH APPROVED THESE CHANGES. FINAL BID TO INCLUDE PERMIT COMMENTS.

FORMICA & ASSOCIATES Inc.
Consulting Engineers
Celebrating 40 years!
980 N. Federal Highway
Suite 110
Boca Raton, FL 33432
Tel: (561) 368-3611
License No. CA 8818
www.formicaengineering.com



COMcheck Software Version COMcheckWeb

Exterior Lighting Compliance Certificate

Project Information

Energy Code: 2020 Florida Building Code, Energy Conservation
Project Title: LAKE WORTH STATION
Project Type: New Construction
Exterior Lighting Zone: 2 (Residentially zoned area (LZ2))

Construction Site: LAKE WORTH BEACH, FL
LAKE WORTH, Florida
Owner/Agent:
Designer/Contractor:

Allowed Exterior Lighting Power

A Area/Surface Category	B Quantity	C Allowed Watts /	D Tradable Wattage	E Allowed Watts (B X C)
Parking area	28890 ft2	0.04	Yes	1156
Walkway < 10 feet wide	251 ft of	0.5	Yes	126
Walkway >= 10 feet wide	1124 ft2	0.1	Yes	112
Total Tradable Watts (a) =				1394
Total Allowed Watts =				1394
Total Allowed Supplemental Watts (b) =				400

(a) Wattage tradeoffs are only allowed between tradable areas/surfaces.
(b) A supplemental allowance equal to 400 watts may be applied toward compliance of both non-tradable and tradable areas/surfaces.

Proposed Exterior Lighting Power

A Fixture ID : Description / Lamp / Wattage Per Lamp / Ballast	B Lamps/ Fixture	C # of Fixture	D Fixture Watt.	E (C X D)
Parking area (28890 ft2): Tradable Wattage				
LED: SA: PARKING LIGHT: LED Roadway-Parking Unit 67W:	1	1	122	122
LED: SB: PARKING LIGHT: LED Roadway-Parking Unit 67W:	1	1	72	72
LED: SB1: PARKING LIGHT: LED Roadway-Parking Unit 42W:	1	4	55	220
LED: SD: PARKING LIGHT: LED Roadway-Parking Unit 42W:	1	2	72	144
LED: SD1: PARKING LIGHT: LED Roadway-Parking Unit 42W:	1	1	55	55
LED: BL: BOLLARD: LED Other Fixture Unit 36W:	1	2	30	60
LED: W: WALL SCONCE: LED Other Fixture Unit 36W:	1	2	39	78
LED: W1: WALL SCONCE: LED Other Fixture Unit 13W:	1	1	12	12
Walkway < 10 feet wide (251 ft. of walkway length): Tradable Wattage				
LED: BL: BOLLARD: LED Other Fixture Unit 28W:	1	6	30	180
Walkway >= 10 feet wide (1124 ft2): Tradable Wattage				
LED: LA: LANDSCAPE LIGHT: LED Other Fixture Unit 28W:	1	4	33	132
LED: LB: LANDSCAPE LIGHT: LED Other Fixture Unit 6.5W:	1	2	7	14
Total Tradable Proposed Watts =				1089

Project Title: LAKE WORTH STATION
Data filename: Report date: 04/06/22
Page 1 of 5

Section # & Req.ID	Rough-In Electrical Inspection	Complies?	Comments/Assumptions
C405.2.5 [EL28] ¹	Manual lighting controls are in a location with ready access and where controlled lights are visible.	<input type="checkbox"/> Complies <input type="checkbox"/> Does Not <input type="checkbox"/> Not Observable <input type="checkbox"/> Not Applicable	
C405.2.6 [EL30] ¹	Exterior lighting systems provided with controls complying with C405.2.6.1 through C405.2.6.4 for daylight shutoff and decorative lighting shutoff.	<input type="checkbox"/> Complies <input type="checkbox"/> Does Not <input type="checkbox"/> Not Observable <input type="checkbox"/> Not Applicable	Requirement will be met.

Additional Comments/Assumptions:

1 High Impact (Tier 1) 2 Medium Impact (Tier 2) 3 Low Impact (Tier 3)

Project Title: LAKE WORTH STATION
Data filename: Report date: 04/06/22
Page 4 of 5

Exterior Lighting PASSES: Design 39% better than code

Exterior Lighting Compliance Statement

Compliance Statement: The proposed exterior lighting design represented in this document is consistent with the building plans, specifications, and other calculations submitted with this permit application. The proposed exterior lighting systems have been designed to meet the 2020 Florida Building Code, Energy Conservation requirements in COMcheck Version COMcheckWeb and to comply with any applicable mandatory requirements listed in the inspection Checklist.

Name - Title Signature Date

Project Title: LAKE WORTH STATION
Data filename: Report date: 04/06/22
Page 2 of 5

Section # & Req.ID	Final Inspection	Complies?	Comments/Assumptions
C405.4.2 [F119] ¹	Exterior lighting power is consistent with what is shown on the approved lighting plans, demonstrating proposed watts are less than or equal to allowed watts.	<input type="checkbox"/> Complies <input type="checkbox"/> Does Not <input type="checkbox"/> Not Observable <input type="checkbox"/> Not Applicable	See the Exterior Lighting fixture schedule for values.

Additional Comments/Assumptions:

1 High Impact (Tier 1) 2 Medium Impact (Tier 2) 3 Low Impact (Tier 3)

Project Title: LAKE WORTH STATION
Data filename: Report date: 04/06/22
Page 5 of 5



COMcheck Software Version COMcheckWeb

Inspection Checklist

Energy Code: 2020 Florida Building Code, Energy Conservation

Requirements: 75.0% were addressed directly in the COMcheck software

Text in the "Comments/Assumptions" column is provided by the user in the COMcheck Requirements screen. For each requirement, the user certifies that a code requirement will be met and how that is documented, or that an exception is being claimed. Where compliance is itemized in a separate table, a reference to that table is provided.

Section # & Req.ID	Plan Review	Complies?	Comments/Assumptions
C103.2 [PR8] ¹	Plans, specifications, and/or calculations provide all information with which compliance can be determined for the exterior lighting and electrical systems and equipment and document where exceptions to the standard are claimed. Information provided should include exterior lighting power calculations, wattage of bulbs and ballasts, transformers and control devices.	<input type="checkbox"/> Complies <input type="checkbox"/> Does Not <input type="checkbox"/> Not Observable <input type="checkbox"/> Not Applicable	Requirement will be met.
C406 [PR9] ¹	Plans, specifications, and/or calculations provide all information with which compliance can be determined for the additional energy efficiency package options.	<input type="checkbox"/> Complies <input type="checkbox"/> Does Not <input type="checkbox"/> Not Observable <input type="checkbox"/> Not Applicable	Requirement will be met.

Additional Comments/Assumptions:

1 High Impact (Tier 1) 2 Medium Impact (Tier 2) 3 Low Impact (Tier 3)

Project Title: LAKE WORTH STATION
Data filename: Report date: 04/06/22
Page 3 of 5

ALL REPORTS, PLANS, SPECIFICATIONS AND COMPUTER FILES RELATING TO THIS PROJECT ARE THE PROPERTY OF THE MARTIN ARCHITECTURAL GROUP. THE MARTIN ARCHITECTURAL GROUP RESERVES ALL COPYRIGHT AND DESIGN AND OTHER RIGHTS IN THESE PLANS. THE MARTIN ARCHITECTURAL GROUP WILL NOT BE RESPONSIBLE FOR ANY REPRODUCTION OF THE MATERIAL HEREIN OR SUBSTANTIAL USE WITHOUT WRITTEN PERMISSION OF THE MARTIN ARCHITECTURAL GROUP. VIOLATION OF THE COPYRIGHT LAWS OF THE UNITED STATES AND WILL BE SUBJECT TO LITIGATION. © 2020 The Martin Architectural Group, P.C.

THE MARTIN ARCHITECTURAL GROUP, P.C.
ARCHITECTS AND LAND PLANNERS
A PROFESSIONAL CORPORATION

6810 Lyons Technology Circle, Suite 185, Coconut Creek FL, 33073
P (954) 428-1618 F (954) 428-4416

P.A.: SL
P.M.: DFH
DRAWN BY: JVS
PROJECT NO.: 222028

NO.	REVISION	DATE

PERMIT SET

COMCHECK

LAKE WORTH STATION
LAKE WORTH BEACH, FLORIDA

SCALE: AS NOTED
DATE: 2022/04/06

E801

© 2020 The Martin Architectural Group, P.C.

GENERAL DISCLAIMER:
ANY DESIGN CHANGES TO THE SYSTEM COVERED BY THESE PLANS WITHOUT PRIOR APPROVAL OF THE ENGINEER WHO PREPARED THESE PLANS, WILL NULL AND VOID THESE PLANS AND THE REVISED INSTALLATION. IN ADDITION, ALL EXPENSES ASSOCIATED WITH RETURNING THE SYSTEM TO ITS ORIGINAL DESIGN WILL BE THE RESPONSIBILITY OF THE COMPANY WHICH APPROVED THESE CHANGES. FINAL BID TO INCLUDE PERMIT COMMENTS.

FORMICA & ASSOCIATES Inc.
Consulting Engineers
Celebrating 40 years!
980 N. Federal Highway
Suite 110
Boca Raton, FL 33432
Tel: (561) 368-3611
License No. CA 8818
www.formicaengineering.com