

**AMENDMENT NUMBER ONE (1)  
STATE OF FLORIDA DEPARTMENT OF TRANSPORTATION, DISTRICT FOUR (4)  
MAINTENANCE MEMORANDUM OF AGREEMENT (MMOA)**

**THIS AMENDMENT** Number One (1) to the Original Maintenance Memorandum of Agreement (MMOA), FM# 446173-1-52-01, dated 06/16/2023, made and entered into this \_\_\_\_\_ by and between the **STATE OF FLORIDA DEPARTMENT OF TRANSPORTATION** hereinafter called the **DEPARTMENT** and the **CITY OF LAKE WORTH BEACH**, a municipal corporation existing under the Laws of Florida, hereinafter called the **AGENCY**.

**WITNESSETH**

**WHEREAS**, the parties entered into the Maintenance Memorandum of Agreement dated, 06/16/2023 for the purpose of requiring the **AGENCY** to maintain all existing and new decorative or non-standard lights; and

**WHEREAS**, the **AGENCY** intends to install additional new decorative or non-standard lights along a portion of SR A1A/ South Ocean Blvd under FM # 447663-1-52-01, within the **DEPARTMENT'S** right-of-way; and

**WHEREAS**, it is the intent of the **AGENCY** and the **DEPARTMENT** that the **AGENCY** shall maintain: all decorative and non-standard lights, hereinafter referred as "**IMPROVEMENTS**" within the project limits along SR A1A/ South Ocean Blvd from Mile Post (M.P.) 20.348 to M.P. 20.594; and

**WHEREAS** the installation of the **IMPROVEMENTS** pursuant to this Amendment extends the **AGENCY's** maintenance limits, as described in **Exhibit A**, of the Original Agreement dated 06/16/2023; and

**WHEREAS**, the **AGENCY** by Resolution No. \_\_\_\_\_ dated \_\_\_\_\_, attached hereto and by this reference made a part hereof, desires to enter this MMOA Amendment and authorized its officers to do so.

**NOW THEREFORE**, for and in consideration of mutual benefits that flow each to the other, the parties covenant and agree as follows:

1. **Exhibit "A"** of the Maintenance Memorandum of Agreement dated 06/16/2023, shall be amended to include the additional areas: of SR A1A/ South Ocean Blvd from M.P. 20.348 to M.P. 20.594, as set forth in Exhibit A attached and incorporated into this Amendment.
2. The **DEPARTMENT** shall construct the **IMPROVEMENTS** along A1A/ South Ocean Blvd from M.P. 20.348 to M.P. 20.594 as set forth in **Exhibit A**, attached to this Amendment in accordance with the plans attached as **Exhibit B**.

**SECTION No.: 93060000**  
**S.R. No.: SR-A1A**  
**FM No.: 447663-1-52-01**  
**COUNTY: PALM BEACH**

3. The **AGENCY** shall agree to maintain the **IMPROVEMENTS** in this Amendment in accordance with the terms and conditions of the Original MMOA.
4. Except as modified by this Amendment, all terms, and conditions of the original MMOA and all Amendments thereto shall remain in full force and effect.

5. **LIST OF EXHIBITS**

Exhibit A – Project Location, Description, and Aerial Image  
Exhibit B – Project Plans

**SECTION No.: 93060000**  
**S.R. No.: SR-A1A**  
**FM No.: 447663-1-52-01**  
**COUNTY: PALM BEACH**

**IN WITNESS OF THE FOREGOING**, the parties have set their hands and seals the day and year first above written.

**CITY OF LAKE WORTH BEACH**

By: \_\_\_\_\_  
Chairperson/Mayor/Manager

Date: \_\_\_\_\_

Attest: \_\_\_\_\_ (SEAL)  
City Clerk

Legal Approval

\_\_\_\_\_  
Attorney

\_\_\_\_\_  
Date

**SECTION No.: 93060000**  
**S.R. No.: SR-A1A**  
**FM No.: 447663-1-52-01**  
**COUNTY: PALM BEACH**

**IN WITNESS OF THE FOREGOING**, the parties have set their hands and seals the day and year first above written.

**DEPARTMENT**

STATE OF FLORIDA  
DEPARTMENT OF TRANSPORTATION

Sign: \_\_\_\_\_  
Director of Operations

Print Name: Paul A. Lampley

Date: \_\_\_\_\_

Approval as to Form:

Sign: \_\_\_\_\_  
Francine T. Steelman  
Assistant General Counsel

Date: \_\_\_\_\_

**EXHIBIT A**

PROJECT LOCATION, DESCRIPTION, AND AERIAL IMAGE

**I. Location of IMPROVEMENTS:**

The **IMPROVEMENTS** associated with this Amendment are within the **DEPARTMENT'S** right-of-way, within limits of the City of Lake Worth Beach, Florida, along State Road A1A / South Ocean Blvd from Mile Post (M.P.) 20.348 to M.P. 20.594.

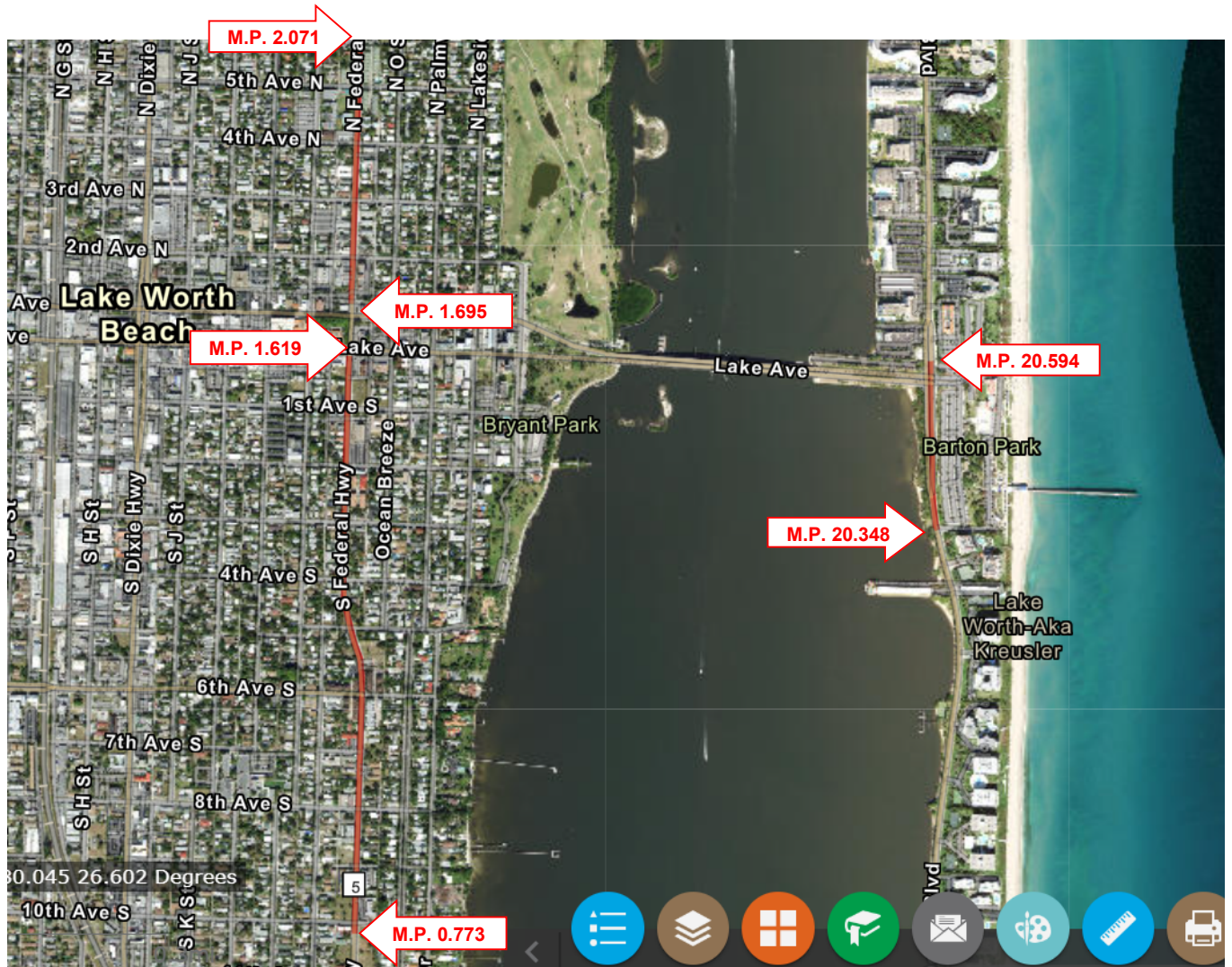
**II. Description of Work:**

The proposed project consists of the installation of new decorative and non-standard lights.



III. Entire limits of IMPROVEMENTS

The entire limits of the **IMPROVEMENTS** that shall be maintain by the **AGENCY** are within the **DEPARTMENT'S** right-of-way in limits of the City of Lake Worth, Florida, along State Road 5/US-1 Federal Highway from Mile Post (M.P.) 0.773 to 1.619 and M.P. 1.695 to M.P. 2.071, and along State Road A1A / South Ocean Blvd from M.P. 20.348 to M.P. 20.594.



**EXHIBIT B**

Lighting Plans prepared by Fernando Amado-Mateus P.E., Trace Consultants, Inc., dated r 12, 2023, as approved by the **DEPARTMENT**.

Lighting Plans (attached)

Sheets included:

PDF Page Number (#)	Plan Sheet (#)	Sheet Description
8	L-1	KEY SHEET
9	L-2	GENERAL NOTES
10	L-3	LIGHTING DATA TABLE
11-12	L-4 THRU L-5	LIGHTING PLAN
13-15	L-6 THRU L-8	POLE DETAILS
16	L-9	LOAD CENTER DETAILS

[The remainder of this page intentionally left blank]

*STATE OF FLORIDA*  
*DEPARTMENT OF TRANSPORTATION*

*LIGHTING PLANS*

FINANCIAL PROJECT ID 447663-1-52-01

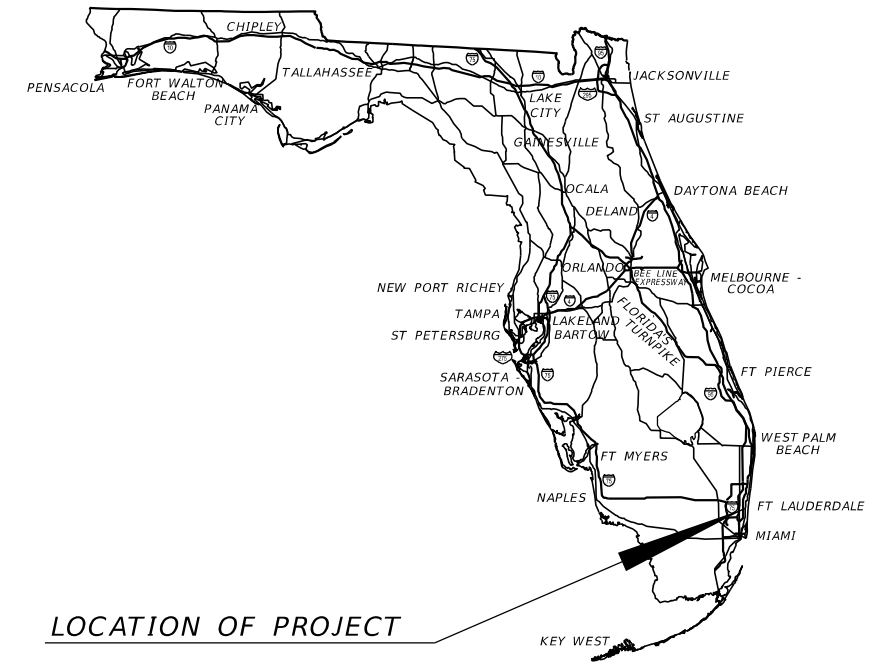
PALM BEACH COUNTY (93060)

STATE ROAD NO. SR A1A  
FROM SOUTH OF LAKE AVE TO N OF IBIS WAY

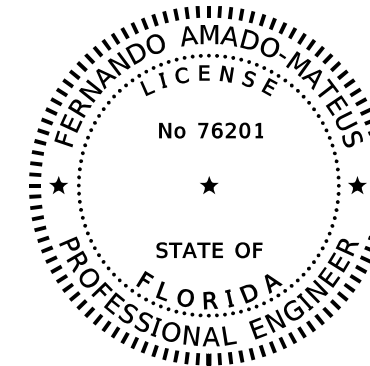
**INDEX OF LIGHTING PLANS**

SHEET NO.	SHEET DESCRIPTION
L-1	KEY SHEET
L-2	GENERAL NOTES
L-3	LIGHTING DATA TABLE
L-4-L-5	LIGHTING PLAN
L-6-L-7-L-8	POLE DETAILS
L-9	LOAD CENTER DETAILS

PROJECT LOCATION URL: <https://tinyurl.com/mat4v9cb>  
 PROJECT LIMITS: BEGIN MP 20.307 - END MP 22.381  
 EXCEPTIONS: NONE  
 BRIDGE LIMITS: NONE  
 RAILROAD CROSSING: NONE



LOCATION OF PROJECT



THIS ITEM HAS BEEN DIGITALLY  
SIGNED AND SEALED BY

ON THE DATE ADJACENT TO THE SEAL

PRINTED COPIES OF THIS DOCUMENT ARE  
NOT CONSIDERED SIGNED AND SEALED  
AND THE SIGNATURE MUST BE VERIFIED  
ON ANY ELECTRONIC COPIES.

THE ABOVE NAMED PROFESSIONAL IS  
RESPONSIBLE FOR THE FOLLOWING SHEETS  
IN ACCORDANCE WITH RULE 61G15-23.004, F.A.C.

**LIGHTING PLANS**  
**ENGINEER OF RECORD:**

FERNANDO AMADO MATEUS, P.E.  
P.E. LICENSE NUMBER 76201  
TRACE CONSULTANTS, INC.  
8900 SW 117 AVENUE, SUITE 105B  
MIAMI, FLORIDA 33186  
PHONE: 786-808-0119  
CONTRACT NO.: CAH06  
VENDOR NO.: F455418595

**FDOT PROJECT MANAGER:**

VANDANA NAGOLE, P.E.

CONSTRUCTION CONTRACT NO.	FISCAL YEAR	SHEET NO.
E0000	25	L-1





**LIGHTING DATA TABLE**

	POLE NO.	CIRCUIT*	STATION	POLE OFFSET	MOUNTING HEIGHT	POLE TYPE	ARM CONFIGURATION	ARM LENGTH	WATTAGE	LOCATION	FOUNDATION	PAY ITEM
SR A1A & LAKE AVENUE	LPLWB-01	B-1	121+45* / BL SURVEY SR A1A	49' LT*	20*	EXIST. ORNAMENTAL CONC.POLE / RETROFIT	PENDANT	3'(*)	97	BACK OF SWK	CYLINDRICAL	715-11-216
	LPLWB-02	A-1	121+47* / BL SURVEY SR A1A	49' RT*	20*	EXIST. ORNAMENTAL CONC.POLE / RETROFIT	PENDANT	3'(*)	97	BACK OF SWK	CYLINDRICAL	715-11-216
	LPLWB-03	A-1	121+86* / BL SURVEY SR A1A	49' RT	20	LIGHT POLE COMPLETE, ORNAMENTAL CONC.	PENDANT	3'	97	BEHIND SWK	SPREAD FOOTER	715-511-320
	LPTS-01	TS	122+51* / BL SURVEY SR A1A	52' LT*	40*	EXIST. TRAFFIC SIGNAL POLE / RETROFIT	BRACKET MOUNT	10'(*)	264	EXIST. SIGNAL ARM	CYLINDRICAL	715-11-211
	LPLWB-04	B-2	122+69* / BL SURVEY SR A1A	128' LT	20	LIGHT POLE COMPLETE, ORNAMENTAL CONC.	PENDANT	3'	97	BEHIND SWK	CYLINDRICAL	715-511-320
	LPLWB-05	B-2	122+73* / BL SURVEY SR A1A	177' LT*	20*	EXIST. ORNAMENTAL CONC. POLE / RETROFIT	PENDANT	3'(*)	97	BEHIND SWK	CYLINDRICAL	715-11-216
	LPTS-02	TS	123+57* / BL SURVEY SR A1A	63' RT*	40*	EXIST. TRAFFIC SIGNAL POLE / RETROFIT	BRACKET MOUNT	10'(*)	264	EXIST. SIGNAL ARM	CYLINDRICAL	715-11-211
	LPLWB-06	A-2	123+70* / BL SURVEY SR A1A	154' LT*	20*	EXIST. ORNAMENTAL CONC. POLE / RETROFIT	PENDANT	3'(*)	97	BEHIND OF SWK	CYLINDRICAL	715-11-216
	LPTS-03	TS	123+78* / BL SURVEY SR A1A	74' LT*	40*	EXIST. TRAFFIC SIGNAL POLE / RETROFIT	BRACKET MOUNT	10'(*)	264	EXIST. SIGNAL ARM	CYLINDRICAL	715-11-211
	LPTPB-01	EXIST	124+58* / BL SURVEY SR A1A	49' RT*	40*	EXIST. ORNAMENTAL CONC. POLE / RETROFIT	PENDANT	6'(*)	173	BACK OF SWK	CYLINDRICAL	N/A
LPTPB-02	EXIST	124+86* / BL SURVEY SR A1A	49' LT*	40*	EXIST. UTILITY POLE CONC. POLE/ RETROFIT	BRACKET MOUNT	12'(*)	186	BACK OF SWK	DIRECT BURIAL	N/A	
LPTPB-03	EXIST	125+56* / BL SURVEY SR A1A	49' LT*	40*	EXIST. ORNAMENTAL CONC. POLE / RETROFIT	PENDANT	6'(*)	173	BACK OF SWK	CYLINDRICAL	N/A	

SR A1A & PG3 MBLK	LPPG3-01	EXIST	185+32* / BL SURVEY A1A	37' LT*	40*	EXIST. ORNAMENTAL CONC. POLE / RETROFIT	PENDANT	6'(*)	144	BEHIND SWK	DIRECT BURIAL	N/A
	LPPG3-02	EXIST	186+13* / BL SURVEY A1A	35' LT	40	PROP. ORNAMENTAL CONC. POLE	PENDANT	6'	144	BEHIND SWK	DIRECT BURIAL	N/A
	LPPG3-03	EXIST	187+02* / BL SURVEY A1A	35' LT*	40*	EXIST. ORNAMENTAL CONC. POLE / RETROFIT	PENDANT	6'(*)	144	BEHIND SWK	DIRECT BURIAL	N/A
	LPPG3-04	EXIST	187+79* / BL SURVEY A1A	35' LT	40	PROP. ORNAMENTAL CONC. POLE	PENDANT	6'	144	BEHIND SWK	DIRECT BURIAL	N/A

\* EXISTING STATIONS, OFFSETS AND MOUNTING HEIGHTS TO REMAIN - PROVIDED FOR REFERENCE ONLY.

TS: EXISTING CIRCUIT CONNECTED TO TRAFFIC SIGNAL SYSTEM, TO REMAIN

**LIGHTING WORK BY UTILITY COMPANY**

- WORK BY FP&L
- WORK BY LAKE WORTH BEACH UTILITY COMPANY

**CONVENTIONAL LIGHTING DESIGN CRITERIA**

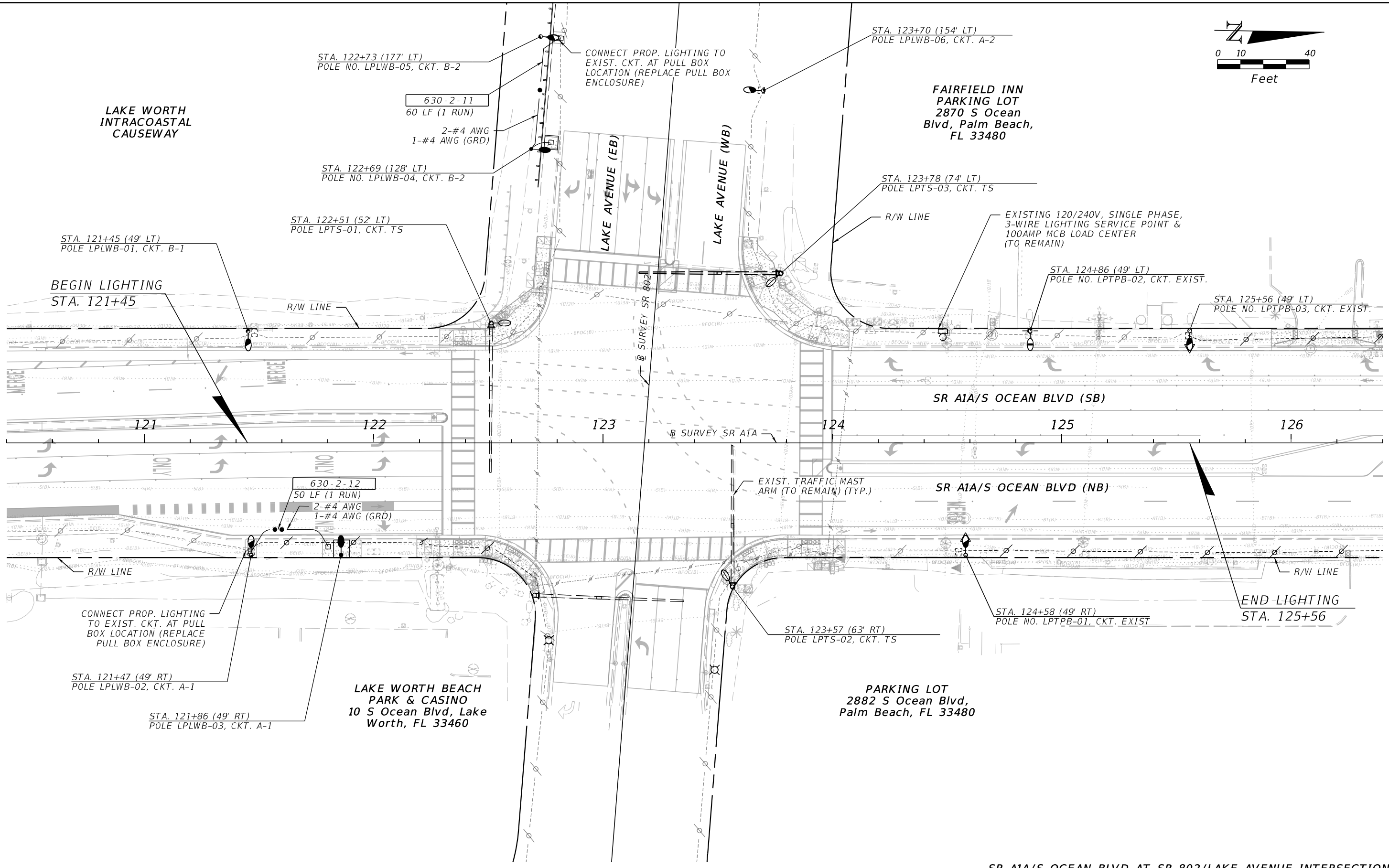
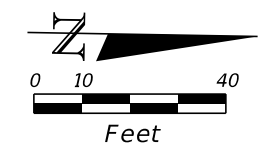
EXISTING SIGNALIZED INTERSECTION

Average Initial Intensity (H.F.C.)	1.5 Std/1.0 Min.
Vertical Illuminance Ratio (V.F.C)	1.5 Std/1.0 Min.
Uniformity Ratio Avg./Min.	4:1 or less
Uniformity Ratio Max./Min.	10:1 or less
Wind Speed	160 MPH

MIDBLOCK CROSSING

Average Initial Intensity (H.F.C.)	N/A
Vertical Illuminance Ratio (V.F.C)	1.5 Std
Uniformity Ratio Avg./Min.	N/A
Uniformity Ratio Max./Min.	N/A
Wind Speed	160 MPH

REVISIONS				ENGINEER OF RECORD		STATE OF FLORIDA DEPARTMENT OF TRANSPORTATION			LIGHTING DATA TABLE	SHEET NO.
DATE	DESCRIPTION	DATE	DESCRIPTION			ROAD NO.	COUNTY	FINANCIAL PROJECT ID		
				FERNANDO AMADO-MATEUS, P.E. LICENSE NUMBER: 76201 TRACE CONSULTANTS, INC. 8900 SW 117 AVENUE, SUITE 105B MIAMI, FL 33186		SR A1A	PALM BEACH	447663-1-52-01		L-3



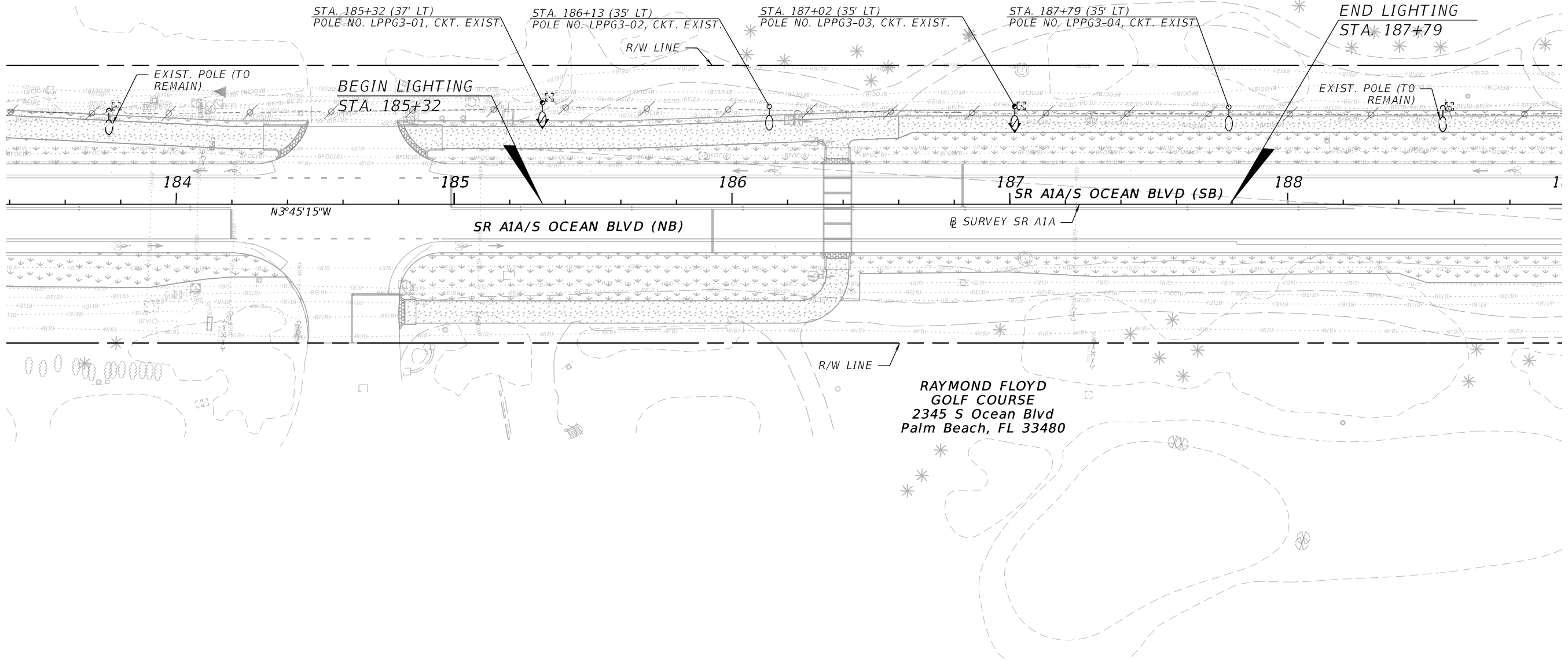
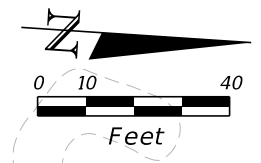
SR A1A/S OCEAN RT AT SR 802/LAKE AVENUE INTERSECTION

3/14/2023 2:35:25 PM sgonzalez Z:\DOT\Connect 10.10\Workspaces\FDOT\Worksets\FDOT\44766315201\Lighting\PL\AML101.dgn

REVISIONS				ENGINEER OF RECORD		STATE OF FLORIDA DEPARTMENT OF TRANSPORTATION			SHEET NO.
DATE	DESCRIPTION	DATE	DESCRIPTION			ROAD NO.	COUNTY	FINANCIAL PROJECT ID	
				FERNANDO AMADO-MATEUS, P.E. LICENSE NUMBER 76201 TRACE CONSULTANTS, INC. 8900 SW 117 AVENUE, SUITE 105B MIAMI, FL 33186		SR A1A	PALM BEACH	447663-1-52-01	L-4

**LIGHTING PLAN**

THE OFFICIAL RECORD OF THIS SHEET IS THE ELECTRONIC FILE DIGITALLY SIGNED AND SEALED UNDER RULE 61G15-23.004, F.A.C.



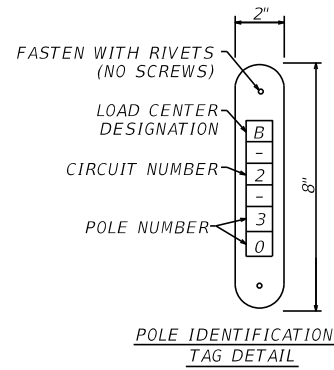
SR A1A/S OCEAN BLVD AT RAYMOND FLOYD GOLF COURSE (PG-3) MIDBLOCK CROSSING

REVISIONS				ENGINEER OF RECORD		STATE OF FLORIDA DEPARTMENT OF TRANSPORTATION			SHEET NO.
DATE	DESCRIPTION	DATE	DESCRIPTION	FERNANDO AMADO-MATEUS, P.E. LICENSE NUMBER: 76201 TRACE CONSULTANTS, INC. 8900 SW 117 AVENUE, SUITE 105B MIAMI, FL 33186		ROAD NO.	COUNTY	FINANCIAL PROJECT ID	
					12	SR A1A	PALM BEACH	447663-1-52-01	L-5

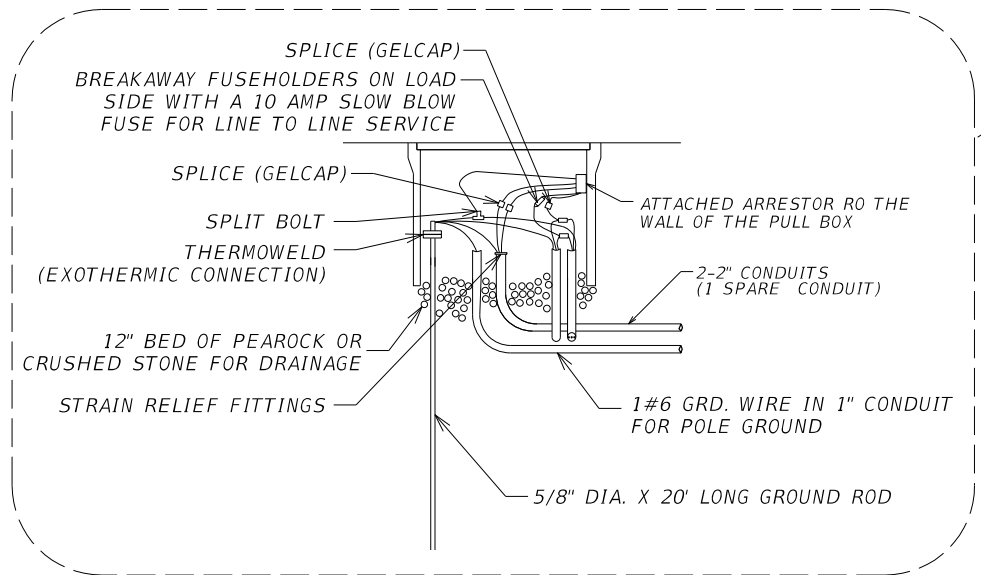
LIGHTING PLAN

3/14/2023 2:35:25 PM sgonzalez Z:\DOT\Connect 10\10\Workspaces\FDOT\Worksets\FDOT\44766315201\Lighting\PL\AML101.dgn

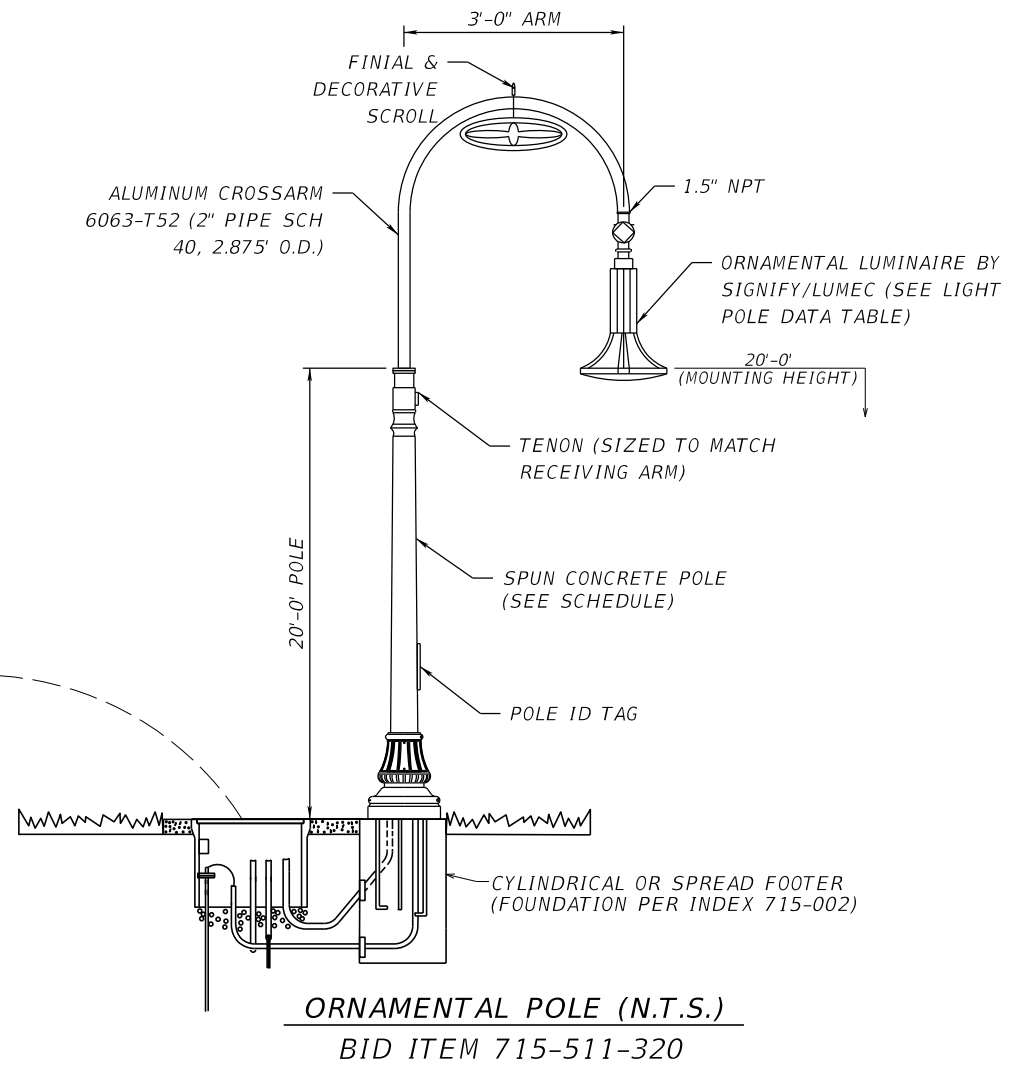
THE OFFICIAL RECORD OF THIS SHEET IS THE ELECTRONIC FILE DIGITALLY SIGNED AND SEALED UNDER RULE 61G15-23.004, F.A.C.



POLE IDENTIFICATION TAG DETAIL



DETAIL 'A' - PULL BOX WIRING



ORNAMENTAL POLE SCHEDULE

ELEMENT	MANUFACTURER	REFERENCE NO.	DIMENSIONS	COLOR
ALUMINUM CROSS-ARM - ROADWAY LIGHTING	ARTEC MANUFACTURING	LAKE WORTH ARM (VX-WPB-ASSE-GN4TX)	3'x3' ARM	GN4TX GREEN
SPUN CONCRETE POLE (FLUTED)	AMERON	VEF06.1 SPL W/TENON ASSEMBLY	20'-0' HT	PINE GREEN

SHOP DRAWINGS

PROVIDE SIGNED AND SEALED STRUCTURAL PLANS AND CALCULATIONS FOR THE ENTIRE DECORATIVE LIGHTING SYSTEM, INCLUDING CONNECTIONS DESIGN (LUMINAIRE-TO-ARM, ARM-TO-UPRIGHT, AND UPRIGHT-TO-FOUNDATION CONNECTIONS). PROVIDE PLANS AND CALCULATIONS SIGNED AND SEALED BY A FLORIDA-LICENSED PROFESSIONAL ENGINEER WHICH DEMONSTRATE THAT THE DECORATIVE LIGHT FIXTURES HAVE BEEN DESIGNED IN ACCORDANCE WITH THE LATEST VERSION OF AASHTO LRFDLTS AS MODIFIED BY THE PROVISIONS OF THE FDOT STRUCTURES MANUAL VOLUME 3.

ORNAMENTAL POLE DETAILS (1 OF 2)

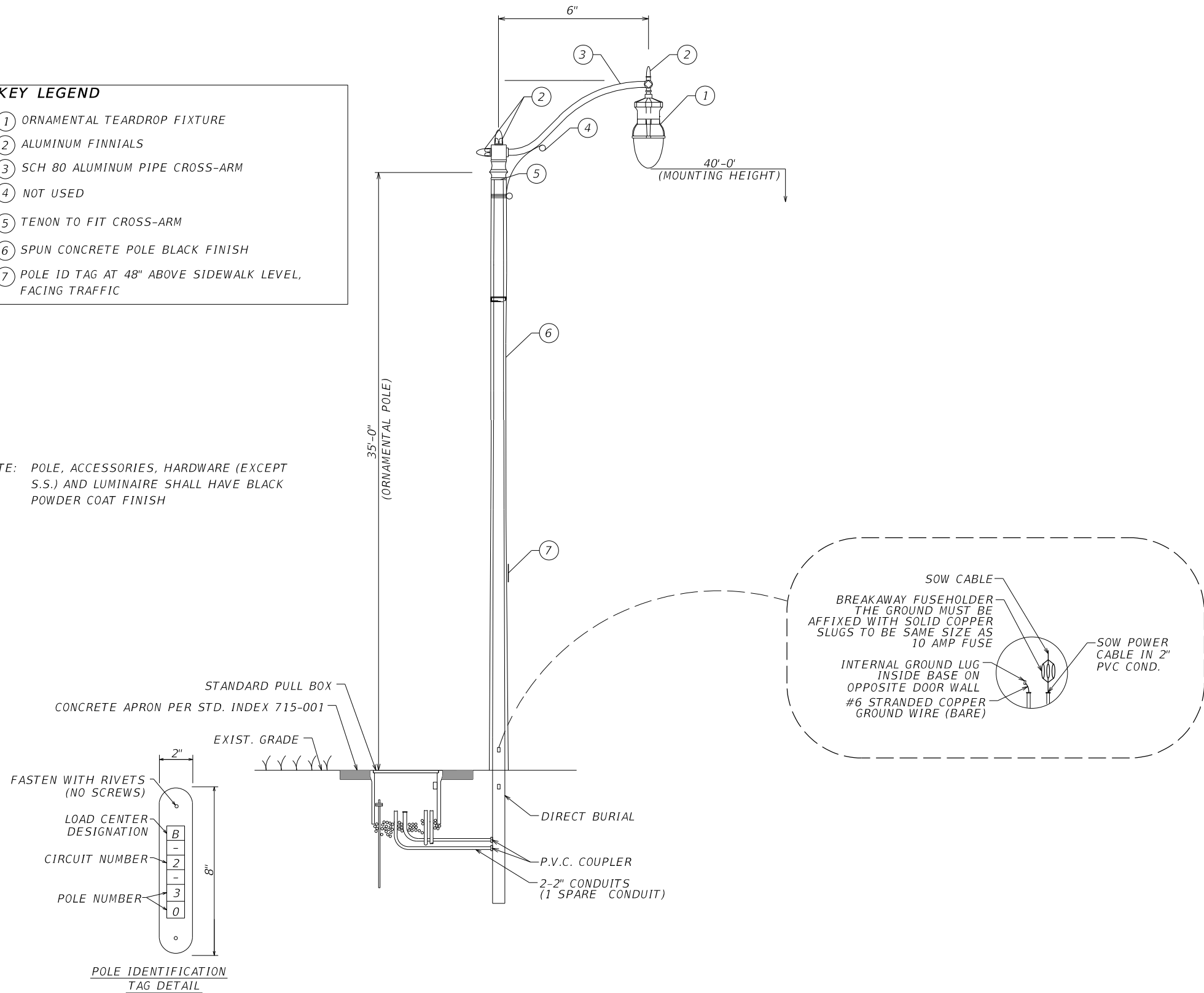
REVISIONS				ENGINEER OF RECORD		STATE OF FLORIDA DEPARTMENT OF TRANSPORTATION			SHEET NO.
DATE	DESCRIPTION	DATE	DESCRIPTION			ROAD NO.	COUNTY	FINANCIAL PROJECT ID	
				FERNANDO AMADO-MATEUS, P.E. LICENSE NUMBER: 76201 TRACE CONSULTANTS, INC. 8900 SW 117 AVENUE, SUITE 105B MIAMI, FL 33186 13		SR A1A	PALM BEACH	447663-1-52-01	POLE DETAILS L-6

3/14/2023 2:35:26 PM sgonzalez Z:\DOT\Connect\10\10\Workspaces\FDOT\Worksets\FDOT\44766315201\Lighting\CMP\LT01.dgn

THE OFFICIAL RECORD OF THIS SHEET IS THE ELECTRONIC FILE DIGITALLY SIGNED AND SEALED UNDER RULE 61G15-23.004, F.A.C.

- KEY LEGEND**
- ① ORNAMENTAL TEARDROP FIXTURE
  - ② ALUMINUM FINNIALS
  - ③ SCH 80 ALUMINUM PIPE CROSS-ARM
  - ④ NOT USED
  - ⑤ TENON TO FIT CROSS-ARM
  - ⑥ SPUN CONCRETE POLE BLACK FINISH
  - ⑦ POLE ID TAG AT 48" ABOVE SIDEWALK LEVEL, FACING TRAFFIC

NOTE: POLE, ACCESSORIES, HARDWARE (EXCEPT S.S.) AND LUMINAIRE SHALL HAVE BLACK POWDER COAT FINISH



**ORNAMENTAL POLE INSTALLATION DETAIL**


\* POLES BY FPL

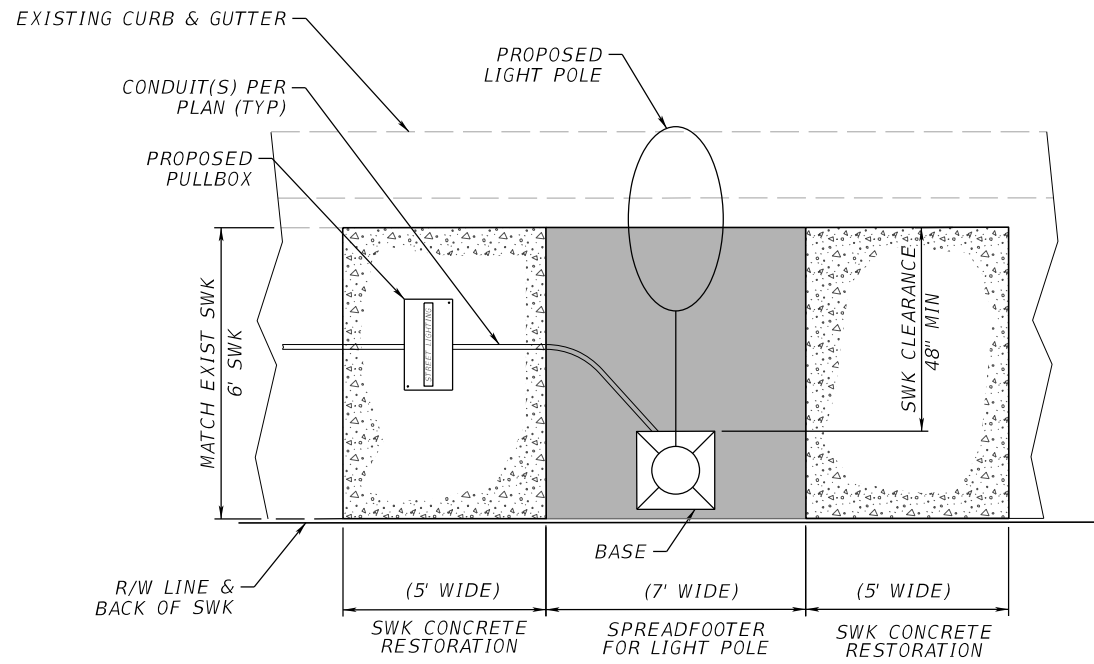
**ORNAMENTAL POLE DETAILS (2 OF 2)**

REVISIONS				ENGINEER OF RECORD			STATE OF FLORIDA DEPARTMENT OF TRANSPORTATION			SHEET NO.
DATE	DESCRIPTION	DATE	DESCRIPTION	FERNANDO AMADO-MATEUS, P.E. LICENSE NUMBER: 76201 TRACE CONSULTANTS, INC. 8900 SW 117 AVENUE, SUITE 105B MIAMI, FL 33186			ROAD NO.	COUNTY	FINANCIAL PROJECT ID	
				14			SR A1A	PALM BEACH	447663-1-52-01	<b>POLE DETAILS</b>
									L-7	


3/14/2023 2:35:26 PM sgonzalez Z:\DOT\Connect\10\10\Workspaces\FDOT\Worksets\FDOT\44766315201\Lighting\CMP\LT01.dgn

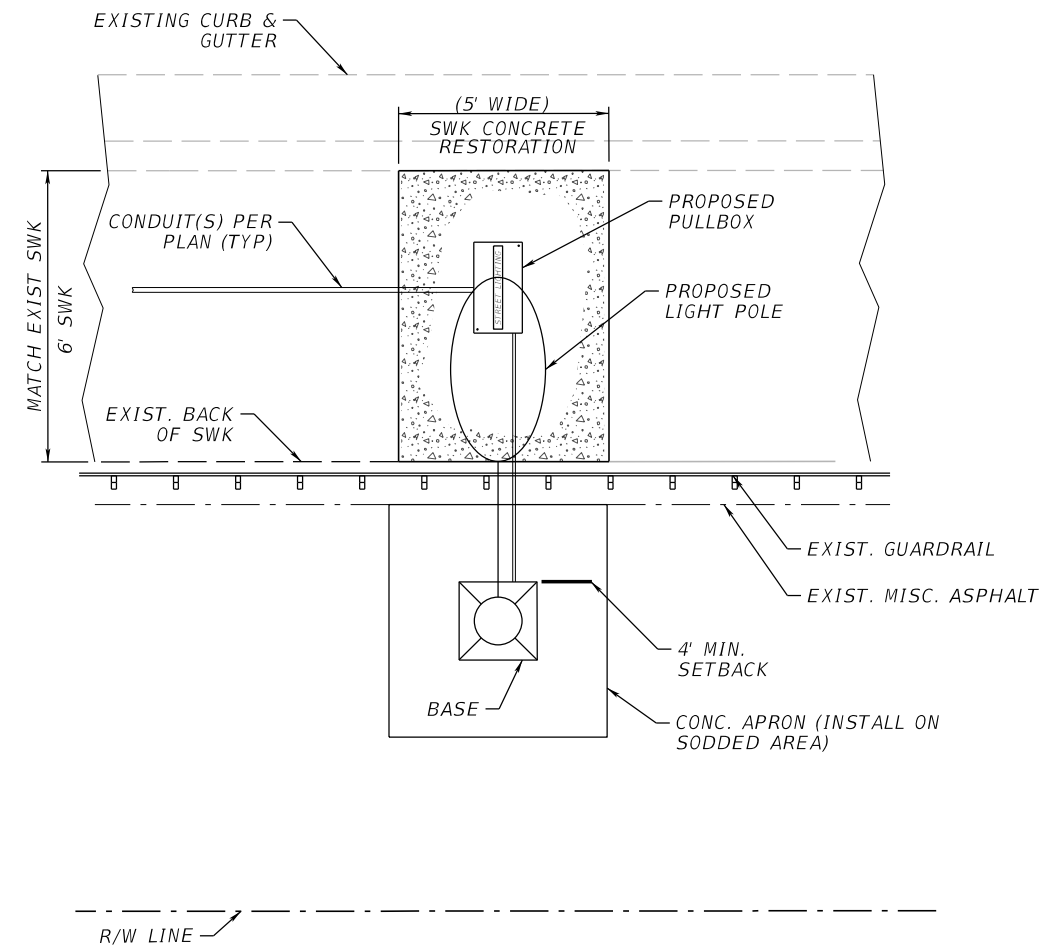
THE OFFICIAL RECORD OF THIS SHEET IS THE ELECTRONIC FILE DIGITALLY SIGNED AND SEALED UNDER RULE 61G15-23.004, F.A.C.

DIRECTION OF TRAFFIC 



DETAIL 'A' - POLE LP-LWB03

DIRECTION OF TRAFFIC 



DETAIL 'B' - POLE LP-LWB04

LIGHT POLE AND SITE RESTORATION DETAILS

REVISIONS				ENGINEER OF RECORD			STATE OF FLORIDA DEPARTMENT OF TRANSPORTATION			SHEET NO.
DATE	DESCRIPTION	DATE	DESCRIPTION	FERNANDO AMADO-MATEUS, P.E. LICENSE NUMBER: 76201 TRACE CONSULTANTS, INC. 8900 SW 117 AVENUE, SUITE 105B MIAMI, FL 33186 15			ROAD NO.	COUNTY	FINANCIAL PROJECT ID	
							SR A1A	PALM BEACH	447663-1-52-01	L-8

POLE DETAILS

3/14/2023 2:35:29 PM sgonzalez Z:\DOT\Connect\10\10\Workspaces\FDOT\Worksets\FDOT\44766315201\Lighting\SPD\TLT01.dgn

THE OFFICIAL RECORD OF THIS SHEET IS THE ELECTRONIC FILE DIGITALLY SIGNED AND SEALED UNDER RULE 61G15-23.004, F.A.C.

**SERVICE POINT DATA TABLE**

SERVICE	ENCLOSURE SIZE & SERVICE COND.	ARTERIAL	ROADWAY	FROM	TO	LOCATION	CIRCUIT	CONDUCTORS	BREAKER SIZE	EXISTING CONNECTED LOAD ©	PROPOSED CONNECTED LOAD (C)	MAINTAINING AGENCY
EXIST. CITY OF LAKE WORTH SERVICE POINT (TO REMAIN)	100 A MCB, 120/240V, SINGLE PHASE, 3 WIRE SERVICE FEEDER, 2-60 AMP CONTACTORS SIZE.	SR-A1A	86050	Southbound of SR 802	Northbound of SR 802	SR A1A / N OCEAN BLVD. NORTHWEST CORNER AT 50 FT LT OF STA. 124+85.00 C/ L SR A1A.	A-I	3-#4	2-30 AMPS	14.8	8.5	CITY OF LAKE WORTH BEACH
							A-II	3-#4	2-30 AMPS	12.5	7.3	
							B-I	3-#4	2-30 AMPS	11.4	6.7	
							B-II	3-#4	2-30 AMPS	12.5	7.7	

NOTE: NO NET INCREASE IN DEMAND LOAD FOR ANY EXISTING CIRCUIT. EXISTING CIRCUITS, CONDUCTORS, BREAKERS AND SERVICE FEEDERS

EXISTING "CITY OF LAKE WORTH SERVICE POINT" 100A MCB IN NEMA 3R ENCLOSURE, 120/240 VOLTS, 1Φ, 3W SERVICE (PER STATE PRJ. FM #228858-1-52-01/FY 2004 AS-BUILTS)						
NO.	CIRCUIT NO.	SERVING	VA	AMPS	CIRCUIT BREAKER	WIRE/CONDUIT
1	A-I	STREET LIGHTING	4,080	8.5	30A	#4
2	A-II	STREET LIGHTING	3,504	7.3	30A	#4
3	B-I	STREET LIGHTING	3,216	6.7	30A	#4
4	B-II	STREET LIGHTING	3,696	7.7	30A	#4

(EXISTING SERVICE CONDUCTORS TO REMAIN)

CONTINUOUS LOAD = 14,496 VA  
 25% CONT. LOAD = 3,624 VA  
 TOTAL = 18,120 VA  
 DEMAND LOAD = 38 A

3/14/2023 2:35:29 PM sgonzalez Z:\DOT\Connect\10\Workspaces\FDOT\Worksets\FDOT\44766315201\Lighting\SRPTLT01.dgn

REVISIONS				ENGINEER OF RECORD		STATE OF FLORIDA DEPARTMENT OF TRANSPORTATION			LOAD CENTER DETAILS	SHEET NO.
DATE	DESCRIPTION	DATE	DESCRIPTION	FERNANDO AMADO-MATEUS, P.E. LICENSE NUMBER: 76201 TRACE CONSULTANTS, INC. 8900 SW 117 AVENUE, SUITE 105B MIAMI, FL 33186		ROAD NO.	COUNTY	FINANCIAL PROJECT ID		L-9
					16	SR A1A	PALM BEACH	447663-1-52-01		

THE OFFICIAL RECORD OF THIS SHEET IS THE ELECTRONIC FILE DIGITALLY SIGNED AND SEALED UNDER RULE 61G15-23.004, F.A.C.