

Irrigation Notes

LAYOUT

LAYOUT IRRIGATION SYSTEM MAINLINES AND LATERAL LINES. MAKE ALL NECESSARY ADJUSTMENTS AS REQUIRED TO TAKE INTO ACCOUNT ALL SITE OBSTRUCTIONS AND LIMITATIONS PRIOR TO EXCAVATING TRENCHES.

FLAG ALL SPRINKLER HEAD LOCATIONS. ADJUST LOCATION AND MAKE THE NECESSARY MODIFICATIONS TO NOZZLE TYPES ETC. AS REQUIRED TO INSURE 100% COVERAGE AND 50% OVERLAP.

LOW ANGLE TRAJECTORY NOZZLES SHALL BE USED WHEN ALL SPRINKLERS AND ROTORS ARE LOCATED WITHIN 100' OF POOLS OR PUBLIC GATHERING AREAS.

PIPE

PIPE LOCATIONS SHOWN ON PLAN ARE SCHEMATIC ONLY AND SHALL BE ADJUSTED IN THE FIELD. WHEN LAYING-OUT MAINS AND LATERALS, LOCATE PIPE NEAR EDGES OF PAVEMENT OR AGAINST BUILDINGS WHEREVER POSSIBLE TO ALLOW SPACE FOR PLANT ROOT BALLS.

PIPING UNDER HARDSCAPES SUCH AS ROADS, WALKS, AND PATIOS ARE TO BE SLEEVED USING SCH. 40 PIPE.

PIPES 4\"

*SIZE ALL PIPE SO NOT TO EXCEED 5\"

PIPES CONVEYING RECLAIM WATER SHALL HAVE A 3\"

AIR RELEASE VALVES TO BE USED AT THE END OF ALL MAINLINE RUNS.

WIRES

LOW VOLTAGE WIRE TO BE INSTALLED ALONG MAINLINE INSTALLATION. USE 2\"

WIRE SIZED AND COLORED AS FOLLOWS:
#12 WHITE FOR COMMON
#12 SPARE BLACK COMMON (1 SPARE NEEDED PER 10 HOT WIRES)
#14 RED HOT WIRES
#14 SPARE YELLOW HOT WIRE (1 SPARES NEEDED PER 10 HOT WIRES, 3 SPARE MINIMUM)

WHEN WIRE RUNS EXCEEDS 3,500 LINEAR FEET, USE #10 FOR COMMON WIRES AND #12 FOR HOT/SPARE WIRES.

ALL IRRIGATION CONTROLLERS TO BE PROPERLY GROUNDED IN ACCORDANCE WITH MANUFACTURE'S RECOMMENDATIONS.

FLUSHING

PRIOR TO PLACEMENT OF HEADS FLUSH ALL LINES UNTIL LINES ARE COMPLETELY CLEAN OF DEBRIS.

TRENCHING

TRENCH BOTTOM TO BE UNIFORM AND FREE OF DEBRIS. NATIVE EXCAVATED MATERIAL USED TO BACKFILL TRENCH SHALL BE FREE FROM ROCKS OR STONES LARGER THAN 1\"

MISC.

PRESSURE TEST MAINLINE AS PER FLORIDA BUILDING CODE. INSTALL IRRIGATION SYSTEM AS PER LATEST EDITION OF THE FLORIDA BUILDING CODE, APPENDIX F, AND ALL PERTINENT LOCAL CODES.

SPRAY HEADS INSTALLED IN SHRUB AREAS TO BE 12 INCH POP-UPS OR INSTALLED ON RISERS.

DESIGN

THIS DESIGN IS DIAGRAMMATIC. ALL IRRIGATION EQUIPMENT SUCH AS PIPES, VALVES, ETC., SHOWN WITHIN PERVIOUS AREAS ARE FOR DESIGN CLARIFICATION ONLY. THE IRRIGATION CONTRACTOR SHALL INSTALL IRRIGATION EQUIPMENT IN PLANTING AREAS WHEREVER POSSIBLE.

THE IRRIGATION CONTRACTOR IS RESPONSIBLE TO FAMILIARIZE THEMSELVES WITH THE SCOPE OF WORK, INCLUDING BUT NOT LIMITED TO GRADE DIFFERENCES, LOCATION OF WALLS, STRUCTURES, UTILITIES AND EXISTING IRRIGATION EQUIPMENT. THE IRRIGATION CONTRACTOR IS RESPONSIBLE SHALL REPAIR AND/OR REPLACE ANY DAMAGE CREATED BY THEIR WORK. THEY SHALL COORDINATE HIS WORK WITH OTHER CONTRACTOR OR MUNICIPAL AUTHORITIES FOR THE LOCATION AND INSTALLATION OF IRRIGATION EQUIPMENT UNDER ROADWAYS AND PAVING, SLEEVES THROUGH WALLS AND FLOORS, ETC.

INSTALL ALL IRRIGATION EQUIPMENT PER MANUFACTURER'S RECOMMENDATIONS AND SPECIFICATIONS. SUBSTITUTIONS FOR IRRIGATION EQUIPMENT TO BE APPROVED BY THE IRRIGATION DESIGNER. EQUIPMENT CHANGES TO INCLUDE BUT NOT LIMITED TO PUMP, CONTROLLER, SPRAY HEADS, ROTORS, AND VALVES.

DO NOT INSTALL IRRIGATION EQUIPMENT AS SHOWN ON THE DRAWINGS WHEN FIELD CONDITIONS DIFFER. OBSTRUCTIONS OR DIFFERENCES TO BE BROUGHT TO THE ATTENTION OF THE ARCHITECT. IN THE EVENT THIS NOTIFICATION IS NOT PERFORMED, THE IRRIGATION CONTRACTOR TO ASSUME FULL RESPONSIBILITY.

EQUIPMENT TABLE

Symbol	Description
	Pressure Vacuum Breaker

Symbol	Description
	Rainbird ESP-Me
	Rain Sensor


Symbol	Description
	RAINBIRD 1800 SERIES 15 Strp Series trajectory 30 deg EST
	RAINBIRD 1800 SERIES HE-VAN 08 Series 90"
	RAINBIRD 1800 SERIES HE-VAN 10 Series 90"
	RAINBIRD 1800 SERIES HE-VAN 12 Series 90"
	RAINBIRD 1800 SERIES HE-VAN 12 Series 360"
	RAINBIRD 1800 SERIES HE-VAN 15 Series 180"

Symbol	Description
	Class 160 PVC (Lateral)

Symbol	Description
	Schedule 40 PVC Pipe

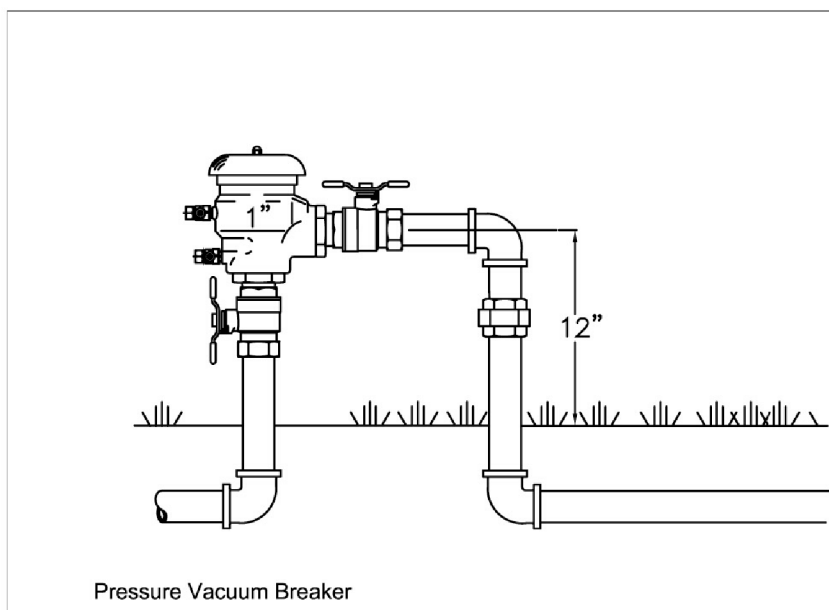
Symbol	Description
	Schedule 40 PVC Pipe

Symbol	Description
	Rainbird PGA Valve

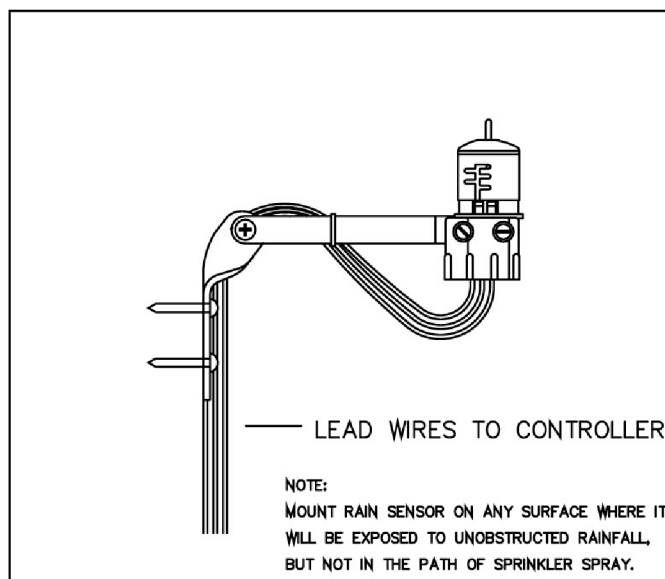
Water Meters	
Symbol	Description
	1" Water Meter

10TH AVENUE NORTH
(80' RIGHT-OF-WAY)

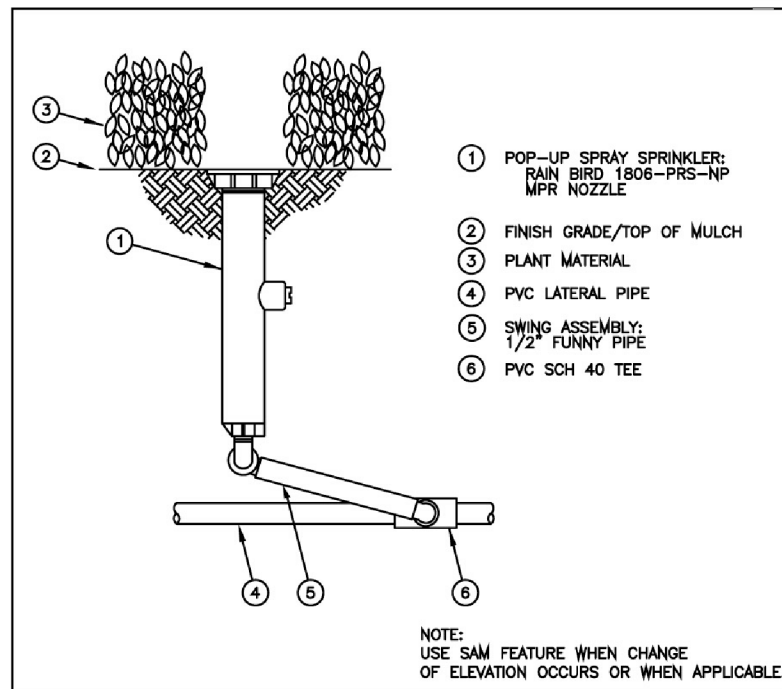
IRRIGATION NOTE: MAIN LINE, LATERAL LINE, BACKFLOW PREVENTER AND IRRIGATION SPRINKLER LOCATIONS ARE SHOWN SCHEMATICALLY AND SHALL BE ADJUSTED BASED ON FIELD CONDITIONS. ALL LANDSCAPE AREAS TO RECEIVE 100% COVERAGE BY IRRIGATION SYSTEM. FINAL AND BEST LOCATION OF TIMER, RAIN SENSOR AND VALVES SHALL BE DETERMINED BY IRRIGATION CONTRACTOR.



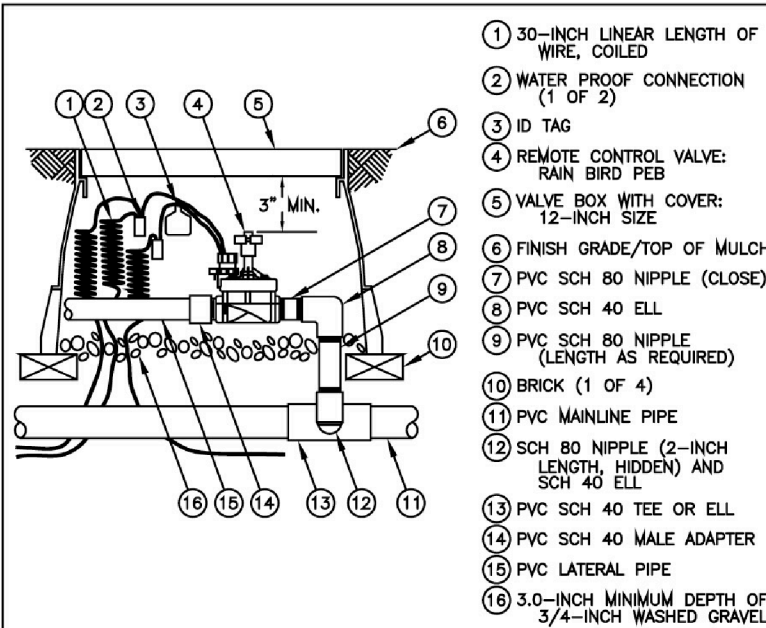
PRESSURE VACUUM BREAKER



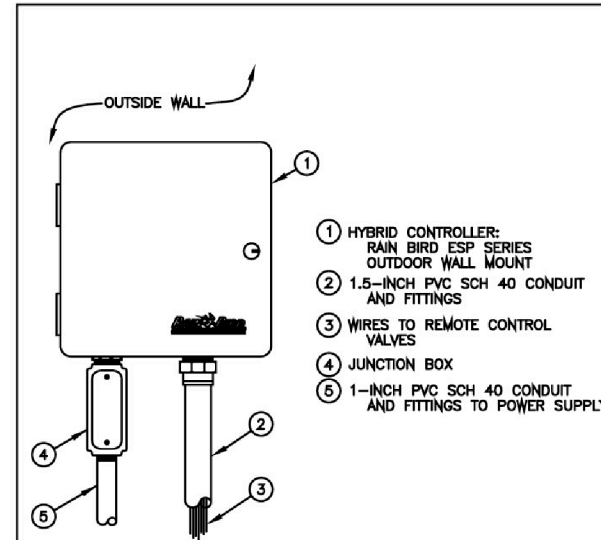
RAIN BIRD RAIN SENSOR



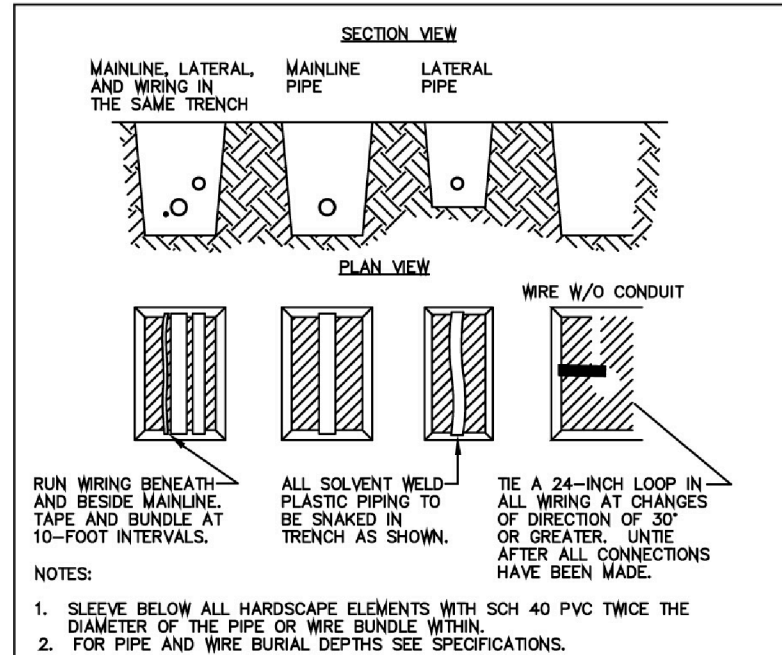
RAIN BIRD 1800 SERIES SPRINKLER



RAIN BIRD PGA VALVE



RAIN BIRD CONTROLLER DETAIL



TRENCH DETAIL

PROJECT:
1008 N E ST & 1005 N F ST LAKE WORTH FL 33460
LANDSCAPE PERMIT DRAWINGS
CLIENT:
1212 TENTH AVENUE NORTH LLC

REVISIONS:

No. Date Description

SEAL:
LANDSCAPE ARCHITECT: Christopher Cabezas



SHEET TITLE:

IRRIGATION PLAN

Scale: 3/32" = 1' - 0"

Drawn By: CC

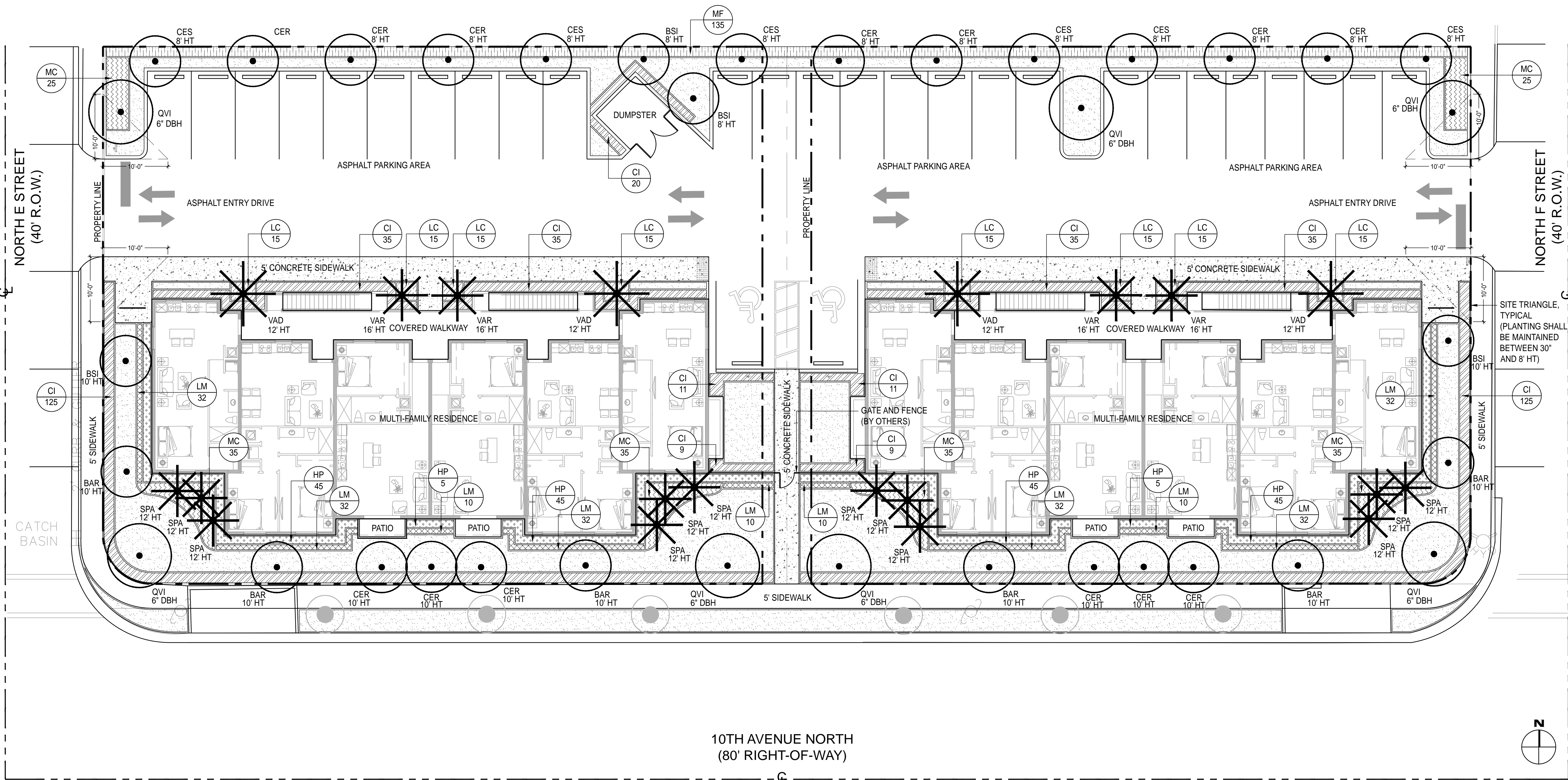
Checked By: CC

Date: 09/24/2020

SHEET NUMBER:

LI-1

CHRIS CABEZAS
LANDSCAPE ARCHITECTURE, INC.
80 NE 5TH AVENUE
DELRAY BEACH, FL 33483
561.596.6771 | chriscabezas@gmail.com
www.chriscabezaslandscape.com



LANDSCAPE CALCULATIONS		
Zoning: MU-E—Mixed Use East		
Total Lot Area: 30,758 SF		
Pervious Area: 7,980 SF		
Impervious Area: 22,778 SF		
Perimeter Landscaping	Required	Provided
5' Landscape Strip	Yes	Yes
ROW Trees (1 Large Tree/ 25')	Yes	Yes
Interior Hedge	Yes	Yes
Multiple Tier Planting	Yes	Yes
8' HT Hedge for Multifamily Separation	Yes	Yes
VAU abutting properties (1 Tree/ 20')	Yes	Yes
Interior Landscaping	Required	Provided
Lot: 1 Large Tree/ 650 SF Pervious Area	12 Trees	12 Trees
5' Landscape Strip at Bldg Foundation	Yes	Yes
1 Tree/Interior Parking Islands	2 Trees	2 Trees
General Requirements:	Required	Provided
Native Trees (75%)	75%	85%
Native Shrubs (75%)	75%	100%
Palms (Max. 20% of Total Trees)	20%	10%
Total Tree Requirements:	Required	Provided
Total Trees (Lot, Islands + Mitigation)	26 Trees	40 Trees
Total Palms (Mitigation)	3 Palms	8 Palms

MITIGATION SUMMARY			
Mitigation Trees Required (see Tree Dispo Sheet)	Required	Provided	
Inch for Inch: 3 Trees Removed	41" DBH	7 Trees @6" DBH	
Tree: One for one	5 Trees	5 Trees @ 10' HT	
Palm: One for one	3 Palms	3 Palms @ 16' HT	

PLANT SCHEDULE						
TREES	QTY	Scientific Name	Common Name	Specs	Notes	Native
BAR	6	Bulnesia Arborea	Verawood	10' HT Min., 1.5" DBH	Standard	
BSI	4	Bursera simaruba	Gumbo Limbo	10' HT Min., 1.5" DBH	Standard	✓
CGR	13	Conocarpus erectus	Green Buttonwood	10' HT Min., 1.5" DBH	Standard	✓
CES	6	Conocarpus erectus var. sericeus	Silver Buttonwood	10' HT Min., 1.5" DBH	Standard	✓
QVI	7	Quercus virginia	Live Oak	12' HT Min., 6" DBH	Standard	✓
PALMS	QTY	Scientific Name	Common Name	Specs	Notes	Native
SPA	12	Sabal palmetto	Sabal Palm	12' HT Min.	Booted	✓
VAD	4	Veitchia arecina	Montgomery Palm	12' HT Min.	Double	
VAR	4	Veitchia arecina	Montgomery Palm	16' HT Min.	Single	
SHRUBS	QTY	Scientific Name	Common Name	Specs	Notes	Native
CI	450	Chrysobalanus icaco	'Redtip' Cocoplum	3 Gallon, 24" HT. Min	24" O.C., to be maintained at 3' HT	✓
HP	190	Hamelia patens	Firebush	3 Gallon, 24" HT. Min	24" O.C.	✓
MC	190	Muhlenbergia capillaris	Pink Muhly Grass	3 Gallon, 18" HT. Min	18" O.C.	✓
MF	135	Myrcianthes fragrans	Simpson's Stopper	3 Gallon, 24" HT. Min	24" O.C., to be maintained between 3' - 6' HT	✓
GROUND-COVERS	QTY	Scientific Name	Common Name	Specs	Notes	Native
LC	120	Lantana camara 'New Gold'	Same	1 Gallon	12" O.C.	
LM	232	Liriope muscari 'Super Blue'	Lilyturf	1 Gallon	12" O.C.	
SOD	QTY	Scientific Name	Common Name	Specs	Notes	
SS	+/-3,860 sf	Sterotaphrum secundatum	Saint Augustine	Pallets		

LEGEND

PROPOSED:

TREE

PALM

HAMELIA PATENS (FIREBUSH)

LIRIOPE MUSCARI (LILYTURF)

LANTANA CAMERA

EXISTING:

EXISTING TREE

XXX

XXX

XXX

XXX

XXX

XXX

LAWN AREA

CONCRETE AREA

(PINK MUHLY GRASS)

(COCOPLUM)

LIRIOPE 'SUPER BLUE'

CHRIS CABEZAS
LANDSCAPE ARCHITECTURE, INC.
80 NE 5TH AVENUE
DELRAY BEACH, FL 33483
561.596.6771 | chris@cabezas.com
www.chriscabezaslandscape.com

PROJECT:
1008 N E ST & 1005 N F ST LAKE WORTH FL 33460
LANDSCAPE PERMIT DRAWINGS
CLIENT:
1212 TENTH AVENUE NORTH LLC

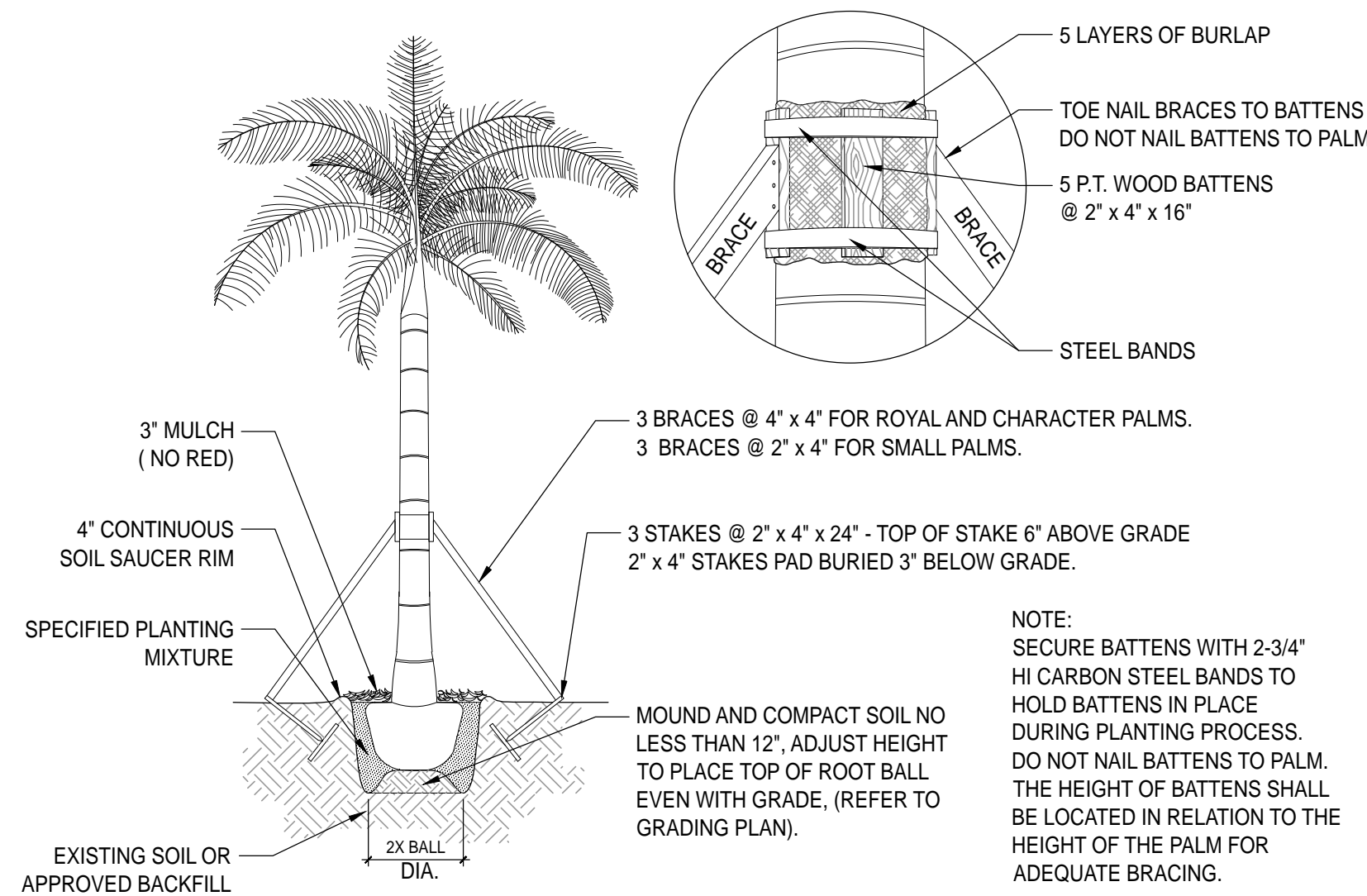
REVISIONS:

No. Date Description

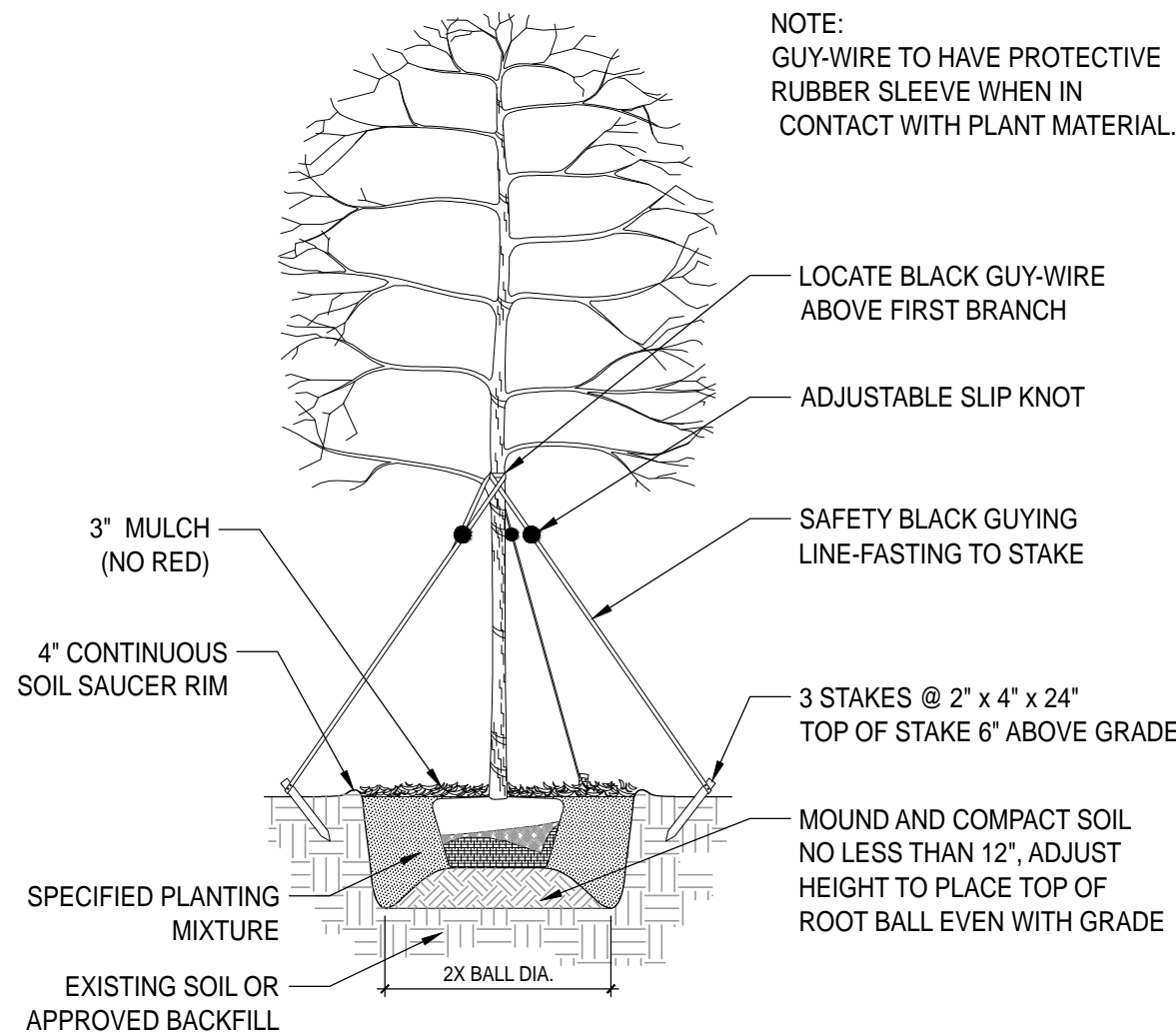
SEAL:
LANDSCAPE ARCHITECT: Christopher Cabezas
REGISTERED LANDSCAPE ARCHITECT
LA 6667347
STATE OF FLORIDA
REGISTRATION NO. RLA 6667347

SHEET TITLE:
LANDSCAPE PLAN

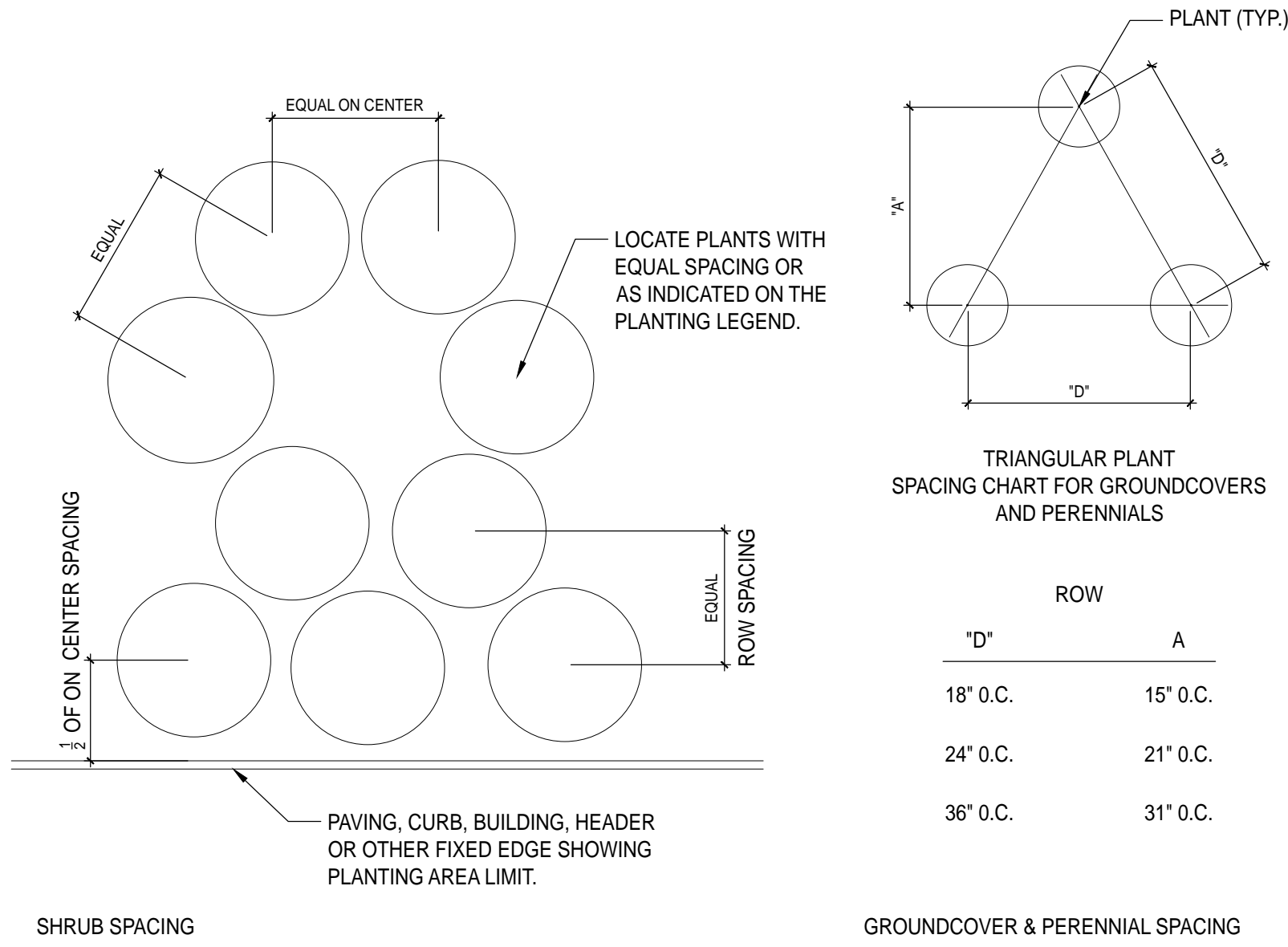
Scale: 3/32" = 1' - 0"
Drawn By: CC
Checked By: CC
Date: 09/24/2020
SHEET NUMBER:
LP-1



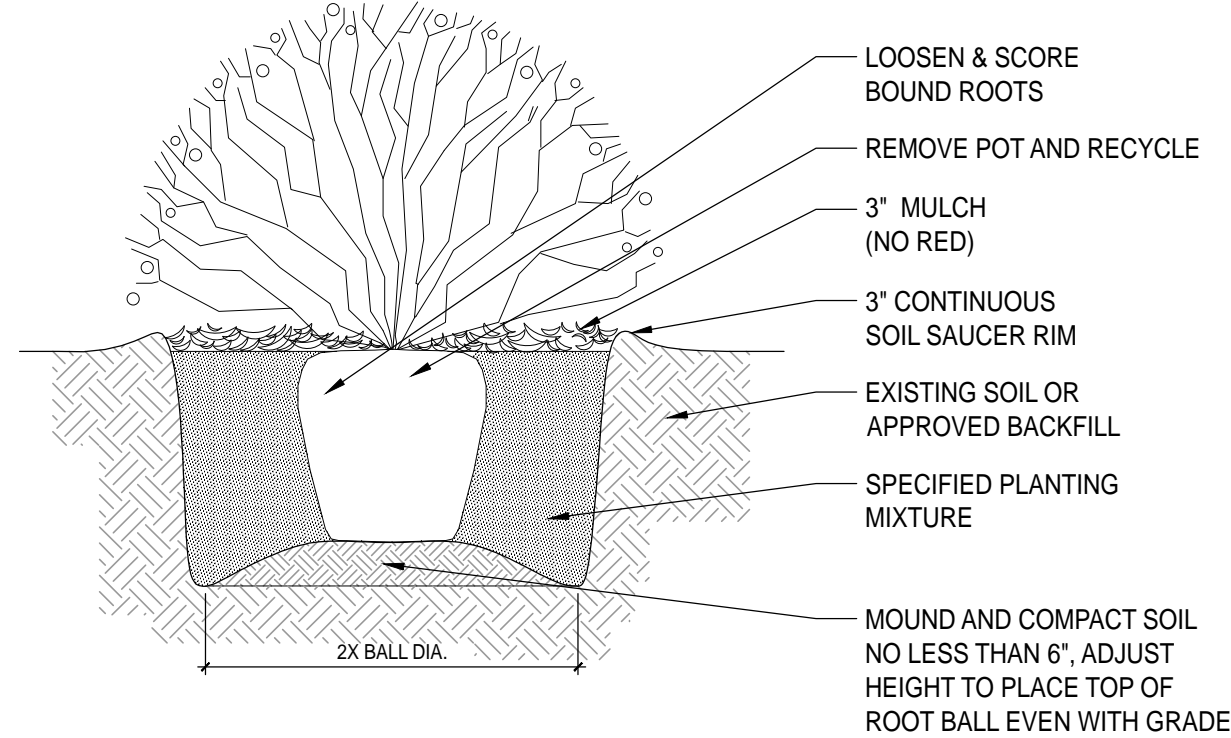
1 PALM PLANTING AND STAKING DETAIL
SCALE: N/A



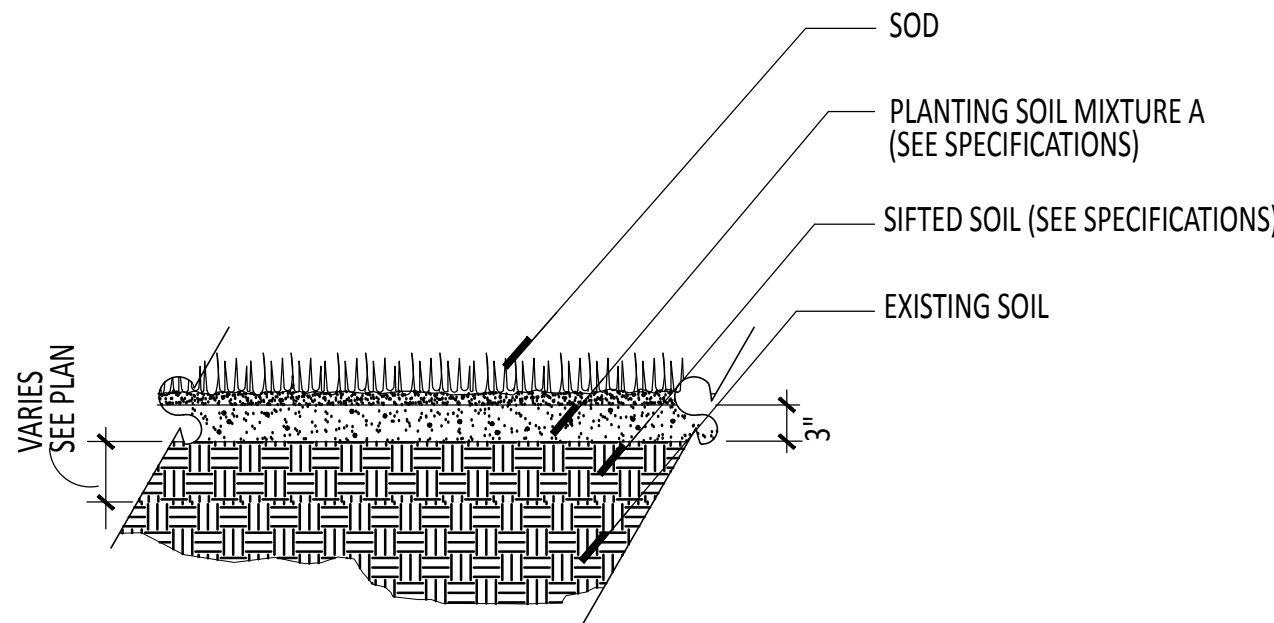
2 UNDERSTORY TREE PLANTING AND STAKING DETAIL
SCALE: N/A



4 PLANT & SHRUB SPACING DETAIL
SCALE: N/A



3 SHRUB PLANTING DETAIL
SCALE: N/A



5 SOD SECTION
SCALE: N/A

GENERAL LANDSCAPE NOTES AND SPECIFICATIONS

- LANDSCAPE CONTRACTOR SHALL BECOME FAMILIAR WITH THE SCOPE OF WORK AS WELL AS THE SITE, DIGGING CONDITIONS, AND ANY OBSTACLES PRIOR TO SUBMITTING A BID.
- LANDSCAPE CONTRACTOR SHOULD VERIFY ALL ESTIMATED QUANTITIES OF MATERIAL SHOWN ON THE LANDSCAPE ARCHITECT'S DRAWINGS PRIOR TO SUBMITTING A BID.
- PLANT LIST SHALL TAKE PRECEDENCE OVER PLANTING PLAN IN CASE OF DISCREPANCIES.
- ALL PLANT MATERIAL SYMBOLS SHOWN ON LANDSCAPE PLANS SHALL BE CONSIDERED DIAGMMATIC AND SHOULD BE ADJUSTED IN THE FIELD BY LANDSCAPE CONTRACTOR TO AVOID ALL UTILITIES AND ALL OTHER OBSTRUCTIONS.
- ALL SIZES SPECIFIED FOR PLANT MATERIAL ON THE PLAN AND PLANT LIST SHALL BE CONSIDERED MINIMUM.
- ALL PLANT MATERIAL MUST MEET OR EXCEED THE SPECIFIED MINIMUM REQUIREMENTS FOR BOTH HEIGHT AND SPREAD.
- ALL MATERIAL SHALL BE SUBJECT TO AVAILABILITY AT TIME OF INSTALLATION.
- ALL TREES, PALMS, SHRUBS AND GROUND COVERS SHALL BE GUARANTEED FOR A PERIOD OF 6 MONTHS FROM DATE OF FINAL ACCEPTANCE.
- LANDSCAPE CONTRACTOR SHALL LOCATE AND VERIFY ALL UNDERGROUND UTILITIES OR STRUCTURES PRIOR TO DIGGING.
- LANDSCAPE CONTRACTOR SHALL COORDINATE WITH THE GENERAL CONTRACTOR, THE REMOVAL OF ALL BUILDING CONSTRUCTION DEBRIS AND FOREIGN MATERIAL PRIOR TO INSTALLATION OF ANY PLANT MATERIAL.
- SITE PREPARATION SHOULD INCLUDE THE ERADICATION AND REMOVAL OF ANY WEEDS OR GRASS, REMOVAL AND CLEAN UP OF ANY DEAD MATERIAL AND ROUGH AND FINISH GRADING PER SPECS AND OR LANDSCAPE PLANS.
- FOR PLANT MATERIAL DESIGNATED TO BE REMOVED, THE ENTIRE ROOT SYSTEM SHALL BE DUG AND REMOVED FROM THE SITE.
- ALL PLANTING AREAS SHOULD RECEIVE AN 80/20 MIX FILL SOIL. SAND USED IN PLANTING SOIL MIX SHALL BE SILICA SAND.
- ALL PLANT MATERIAL SHALL BE FLORIDA NO. 1 OR BETTER AS SET FORTH IN THE FLORIDA DEPARTMENT OF AGRICULTURE 'GRADES AND STANDARDS FOR NURSERY PLANTS' SECOND EDITION FEB. 1998 INCLUDING REVISIONS AND WHICH MEET OR EXCEED THE SIZES INDICATED IN THE PLANTING SCHEDULE AND DETAILS.
- ALL TREES SHALL BE STAKED IN A GOOD WORKMANLIKE MANNER. NO NAIL STAKING PERMITTED. (REFER TO BRACING NOTES AND PLANTING DETAILS)
- AFTER REMOVAL OR RELOCATION OF EXISTING TREES AND PALMS, ALL REMAINING HOLES SHALL BE BACK FILLED AROUND AND UNDER ROOT BALL.
- ALL EXISTING PLANT MATERIAL TO REMAIN, SHALL BE PROTECTED DURING ALL CONSTRUCTION PHASES. ANY PLANT MATERIAL SCARRED OR DESTROYED DESIGNATED TO REMAIN MUST BE REPLACED AT THE CONTRACTOR'S EXPENSE WITH SIMILAR SPECIES SIZE AND QUALITY.
- ALL TREES AND ALL PLANTING BEDS TO BE TOPPED WITH 3" MIN. "GRADE A" ORGANIC MULCH (MELALEUCA IS PREFERRED), UNLESS OTHERWISE NOTED. (CYPRESS MULCH AND RED MULCH SHALL NOT BE USED).
- ALL TREES SHALL HAVE 2" CALIPER AT D.B.H. MINIMUM FOR A 12' HEIGHT TREE, UNLESS NOTED OTHERWISE.
- ALL 1 GALLON MATERIAL SHALL HAVE 12" SPREAD MINIMUM, ALL 3 GALLON MATERIAL TO HAVE 18-24" SPREAD MINIMUM.
- ALL PLANTING AREAS WITHIN THE LIMITS OF WORK SHALL RECEIVE 100% COVERAGE BY AUTOMATIC IRRIGATION SYSTEM (DRIP PREFERRED) UNLESS OTHERWISE DIRECTED BY OWNER. SEE IRRIGATION PLANS FOR ADDITIONAL SPECIFICATIONS.
- LANDSCAPE CONTRACTOR TO COORDINATE INSTALLATION OF IRRIGATION SYSTEM WITH IRRIGATION CONTRACTOR. IRRIGATION TIME CLOCK TO BE HARD WIRED ON COMPLETION - RESPONSIBILITY OF IRRIGATION CONTRACTOR. LANDSCAPE CONTRACTOR SHALL HAND WATER OR ARRANGE FOR WATERING DURING PLANTING UNTIL IRRIGATION SYSTEM IS 100% OPERABLE. THIS IS THE RESPONSIBILITY OF THE LANDSCAPE CONTRACTOR.
- LANDSCAPE CONTRACTOR SHALL COORDINATE HIS WORK WITH ALL OTHER APPROPRIATE CONTRACTORS.
- THE LANDSCAPE CONTRACTOR SHALL AT ALL TIMES KEEP THE JOB SITE CLEAN AND FREE FROM ACCUMULATION OF WASTE MATERIAL, DEBRIS, AND RUBBISH.
- LANDSCAPE PLAN SHALL BE INSTALLED IN COMPLIANCE WITH ALL LOCAL CODES.
- THESE DRAWINGS, DOCUMENTS, AND ALL CONTENTS ARE THE PROPERTY OF CHRIS CABEZAS LANDSCAPE ARCHITECTURE, INC. ALL RIGHTS ARE RESERVED. UNAUTHORIZED USE OR PRODUCTION, IN PART OR WHOLE, FOR ANY PURPOSE IS UNLAWFUL AND PROHIBITED EXCEPT BY EXPRESS WRITTEN CONSENT.
- THE CONTRACTOR IS RESPONSIBLE FOR OBTAINING ANY PERMITS OR APPROVALS FROM THE FEDERAL, STATE OR LOCAL GOVERNMENT REQUIRED FOR THE WORK INCLUDED IN THIS CONTRACT AND ON THESE DRAWINGS.
- NOTIFY THE OWNER AND LANDSCAPE ARCHITECT OF ANY UNFORESEEN CONDITIONS, I.E., COMPACTED SOIL / SUBGRADE, POOR DRAINAGE, UNCONSOLIDATED SOIL, EROSION, UTILITY CONFLICTS, EXCESSIVE SUN OR SHADE, ETC., PRIOR TO PROCEEDING WITH LANDSCAPE INSTALLATION.
- ALL PLANTS, MATERIALS AND WORKMANSHIP ARE SUBJECT TO THE APPROVAL OF THE LANDSCAPE ARCHITECT AND OWNER.



CHRIS CABEZAS
LANDSCAPE ARCHITECTURE, INC.
80 NE 5TH AVENUE
DELRAY BEACH, FL 33483
561.596.6771 | chris@cabezas.com
www.chriscabezaslandscape.com

PROJECT:
1008 N E ST & 1005 N F ST LAKE WORTH FL 33460
LANDSCAPE PERMIT DRAWINGS
CLIENT:
1212 TENTH AVENUE NORTH LLC

REVISIONS:		
No.	Date	Description

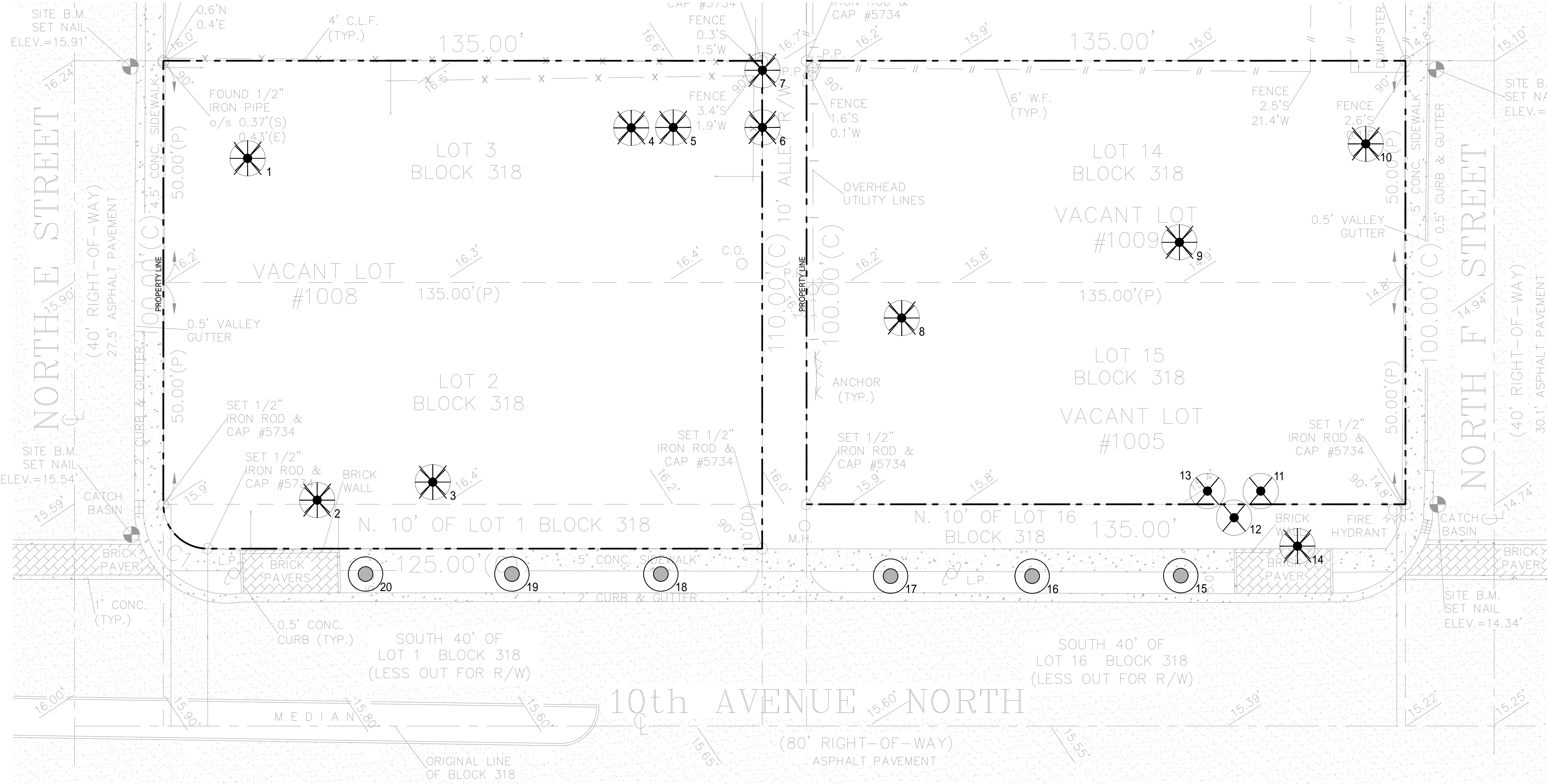
SEAL:
LANDSCAPE ARCHITECT: Christopher Cabezas



SHEET TITLE:
PLANTING DETAILS
+ SPECIFICATIONS

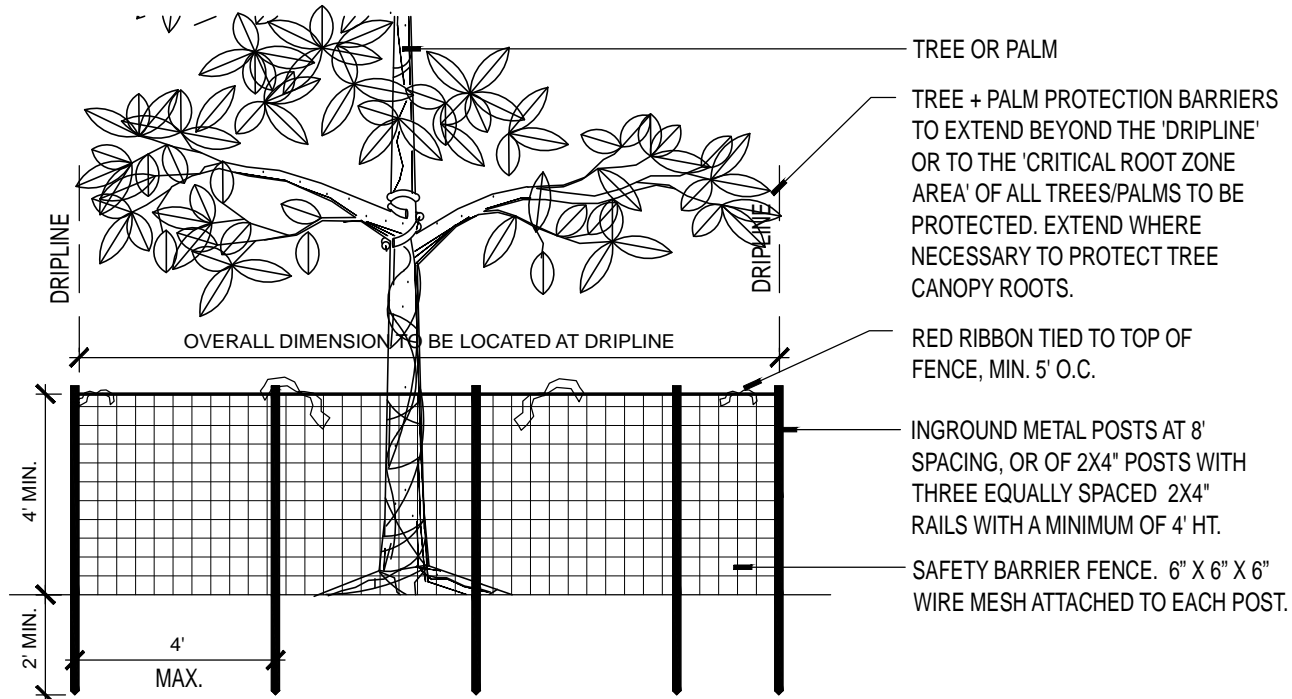
Scale: N/A
Drawn By: CC
Checked By: CC
Date: 09/24/2020
SHEET NUMBER:

LP-2



TREE PROTECTION NOTES

1. TREE SURVEY BASED ON ALL AVAILABLE INFORMATION. CONTRACTOR TO REPORT ALL DISCREPANCIES TO LANDSCAPE ARCHITECT FOR REVIEW PRIOR TO CONSTRUCTION.
2. TREES SHALL BE PROTECTED DURING CONSTRUCTION ACTIVITY THROUGH THE USE OF PROTECTIVE BARRIERS (SEE PROVIDED DETAIL). TREES THAT ARE TO REMAIN SHALL BE CLEARLY IDENTIFIED WITH TAGS. TREE PROTECTION BARRIERS SHALL BE MAINTAINED AROUND THE TREES IN ACCORDANCE WITH THE TREE PROTECTION PLAN APPROVED BY THE DEPARTMENT.
3. PRIOR TO AND DURING DEMOLITION, DEVELOPMENT, OR CONSTRUCTION, PROTECTIVE BARRIERS SHALL BE PLACED AROUND THE PERIMETER OF EACH TREE'S TPZ AND SHALL REMAIN IN PLACE IN ORDER TO PREVENT THE DESTRUCTION OR DAMAGING OF ROOTS, STEMS OR CROWNS OF SUCH TREES. THE BARRIERS SHALL REMAIN IN PLACE AND INTACT UNTIL APPROVED LANDSCAPE OPERATIONS BEGIN.
4. BARRIERS MAY BE REMOVED TEMPORARILY TO ACCOMMODATE CONSTRUCTION NEEDS, PROVIDED THAT THE MANNER AND PURPOSE FOR SUCH TEMPORARY REMOVAL WILL NOT HARM THE TREES.
5. THE TREES SHALL BE PROPERLY IRRIGATED THROUGHOUT THE BUILDING PROCESS.
6. NO PRUNING OF TREES SHALL BE PERFORMED EXCEPT BY APPROVED ARBORIST.
7. CONTRACTOR SHALL VERIFY ALL EXISTING ABOVE AND UNDERGROUND UTILITIES 48 HOURS PRIOR TO ANY ON-SITE EXCAVATION.
8. CONTRACTOR TO COORDINATE DEMOLITION PLAN WITH ARCHITECTS
9. ANY PLANT MATERIAL SCARRED OR DESTROYED THAT IS DESIGNATED TO REMAIN MUST BE REPLACED AT THE CONTRACTOR'S EXPENSE WITH SIMILAR SPECIES AND QUALITY.



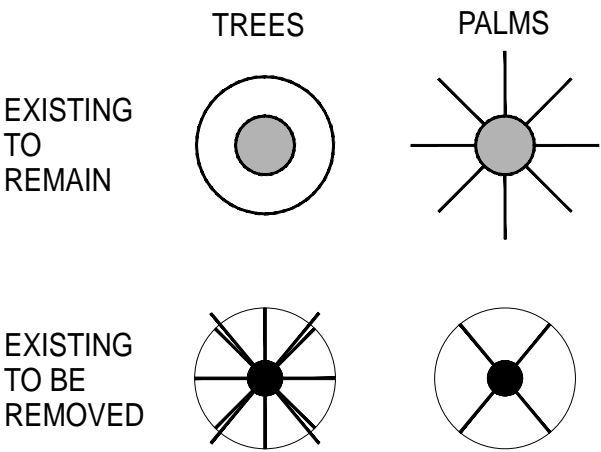
NOTE:
BARRIER TO BE CONTINUOUS AROUND THE TREE OR GROUP OF TREES. SEE LANDSCAPE PLAN FOR LOCATION OF TREES TO REMAIN. IN NO CASE SHALL THE FENCE BE INSTALLED LESS THAN TEN FEET FROM THE TRUNK.

1 TREE PROTECTION DETAIL
ELEVATION

SCALE: N.T.S.

TREE DISPOSITION									
Tree Number	Botanical Name	Common Name	DBH (Inches)	Height (FT)	Canopy (FT)	Condition	Disposition	Mitigation Type	Mitigation
1	Mangifera indica	Mango Tree	20"	16'	19'	Good 75%	Remove	Inch for inch	20" DBH
2	Swietenia mahagoni	Mahogany Tree	6"	15'	12'	Fair 58%	Remove	Inch for inch	6" DBH
3	Ficus Benjamina	Weeping Fig	28"	22'	32'	Very Poor 15%	Remove	One for one	1 Tree
4	Pithecellobium dulce	Manila Tamarind	26"	28'	34'	Very Poor 18%	Remove	One for one	1 Tree
5	Schinus terebinthifolia	Brazilian Pepper	23"	18'	28'	N/A-Invasive	Remove	-	-
6	Cupaniopsis anacardioides	Carrotwood Tree	7"	15'	16'	N/A-Invasive	Remove	-	-
7	Cupaniopsis anacardioides	Carrotwood Tree	8"	19'	18'	N/A-Invasive	Remove	-	-
8	Pithecellobium dulce	Manila Tamarind	38"	22'	42'	Fair 55%	Remove	One for one	1 Tree
9	Ficus benghalensis	Ficus Tree	36"	20'	40'	Fair 42%	Remove	One for one	1 Tree
10	Ficus benghalensis	Ficus Tree	25"	18'	27'	Fair 45%	Remove	One for one	1 Tree
11	Sabal palmetto	Sabal Palm	11"	11'	14'	Fair 50%	Remove	One for one	1 Palm
12	Sabal palmetto	Sabal Palm	10"	12'	14'	Fair 45%	Remove	One for one	1 Palm
13	Sabal palmetto	Sabal Palm	12"	12'	14'	Fair 55%	Remove	One for one	1 Palm
14	Mangifera indica	Mango Tree	15"	32'	28'	Fair 58%	Remove	Inch for inch	15" DBH
15	Quercus virginiana	Live Oak	6"	20'	20'	In ROW	Remain	-	-
16	Quercus virginiana	Live Oak	6"	20'	20'	In ROW	Remain	-	-
17	Magnolia grandiflora	Southern Magnolia	4"	18'	7"	In ROW	Remain	-	-
18	Magnolia grandiflora	Southern Magnolia	4"	18'	7"	In ROW	Remain	-	-
19	Quercus virginiana	Live Oak	6"	20'	20"	In ROW	Remain	-	-
20	Quercus virginiana	Live Oak	6"	20'	20'	In ROW	Remain	-	-
Mitigation Required: 41" DBH + 5 Trees + 3 Palms @16' HT									

PLANT SYMBOLS



CHRIS CABEZAS
LANDSCAPE ARCHITECTURE, INC.
80 NE 5TH AVENUE
DELRAY BEACH, FL 33483
561.596.6771 | chris@cabezas.com
www.chriscabezaslandscape.com

PROJECT:
1008 N E ST & 1005 N F ST LAKE WORTH FL 33460
LANDSCAPE PERMIT DRAWINGS
CLIENT:
1212 TENTH AVENUE NORTH LLC

REVISIONS:

No.	Date	Description

SEAL:
LANDSCAPE ARCHITECT: Christopher Cabezas



SHEET TITLE:

TREE DISPOSITION

Scale: 3/32" = 1' - 0"
Drawn By: CC
Checked By: CC
Date: 09/24/2020
SHEET NUMBER:

LR-1