



GULFSTREAM HOTEL DEVELOPMENT
LAKE WORTH, FL.

GULFSTREAM HOTEL

11 LAKE AVENUE
LAKE WORTH, FL 33460

BEILINSON
GOMEZ

ARCHITECTS P.A.

ARCHITECTURE

AA C 0 0 1 0 6 2

1101 BISCAYNE BLVD. S. 305-310

M I A M I, F L 3 3 1 3 2 1 3 6 6 4

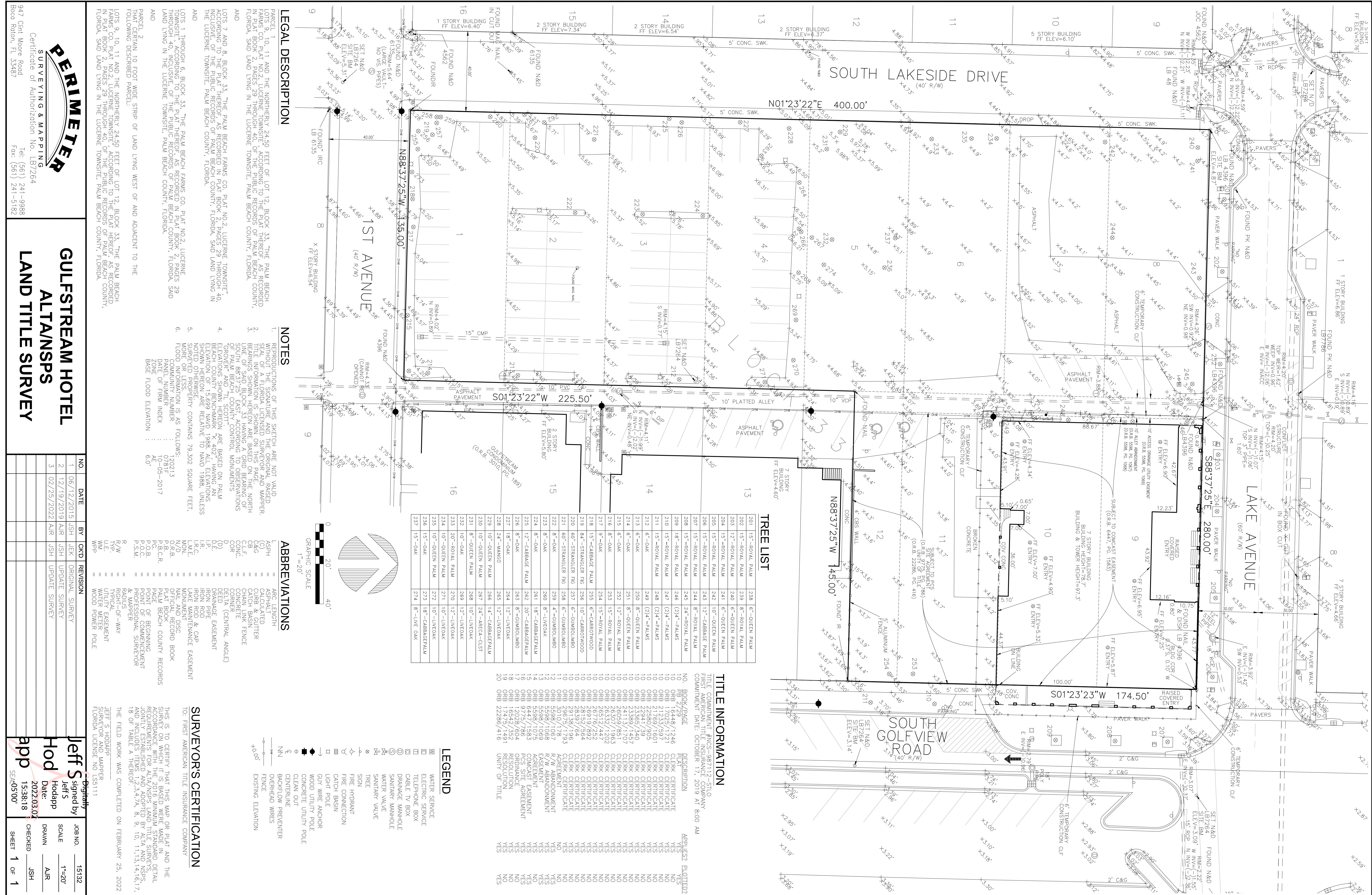
T 305.559.1250 F 305.551.1740

JOSE L. GOMEZ

M A R 0 1 3 4 1 6

	DWG. TITLE	C
	SCALE	
	PROJECT NO.	
	DATE	2
	SHEET NUMBER	11
△	DATE	REVISION

G0



LEGAL DESCRIPTION

PARCEL 1, 10, 11 AND THE NORTHERLY 24.50 FEET OF LOT 12, BLOCK 33, "THE PALM BEACH FARMS CO. PLAT NO. 2, LUCERNE TOWNSITE" ACCORDING TO THE PLAT THEREOF AS RECORDED IN PLAT BOOK 2, PAGES 29 THROUGH 40, OF THE PUBLIC RECORDS OF PALM BEACH COUNTY, FLORIDA, SAID LAND LYING IN THE LUCERNE TOWNSITE, PALM BEACH COUNTY, FLORIDA, AND

PARCEL 2 THAT CERTAIN 10 FOOT WIDE STRIP OF LAND LYING WEST OF AND ADJACENT TO THE FOLLOWING DESCRIBED PARCEL:

LOTS 1 THROUGH 6, BLOCK 33, "THE PALM BEACH FARMS CO. PLAT NO. 2, LUCERNE TOWNSITE" ACCORDING TO THE PLAT THEREOF AS RECORDED IN PLAT BOOK 2, PAGES 29 THROUGH 40, OF THE PUBLIC RECORDS OF PALM BEACH COUNTY, FLORIDA, SAID LAND LYING IN THE LUCERNE TOWNSITE, PALM BEACH COUNTY, FLORIDA, AND

LOTS 7 AND 8, BLOCK 33, "THE PALM BEACH FARMS CO. PLAT NO. 2, LUCERNE TOWNSITE" ACCORDING TO THE PLAT THEREOF AS RECORDED IN PLAT BOOK 2, PAGES 29 THROUGH 40, INCLUDING TO THE PUBLIC RECORDS OF PALM BEACH COUNTY, FLORIDA, SAID LAND LYING IN THE LUCERNE TOWNSITE, PALM BEACH COUNTY, FLORIDA, AND

NOTES

1. REPRODUCTIONS OF THIS SKETCH ARE NOT VALID UNLESS THEY SHOW THE ORIGINAL, WRITTEN SEAL OF A FLORIDA LICENSED SURVEYOR AND MAPPER. TITLE INFORMATION IS SHOWN ON THIS PAGE.
2. BEARINGS SHOWN HEREON ARE BASED ON THE NORTH SICH 8837 BOUNDARIES ACCORDING TO BEARINGS OF PALM BEACH COUNTY CONTROL MONUMENTS "GROVER" AND "L. SCOTT".
3. ELEVATIONS SHOWN HEREON ARE BASED ON PALM BEACH COUNTY DATUM OF 1989 NAVD 1988. ELEVATIONS SHOWN HEREON ARE RELATIVE TO NAVD 1988, UNLESS NOTED OTHERWISE.
4. SURVEYED PROPERTY CONTAINS 79,302 SQUARE FEET, FLOOD INFORMATION IS AS FOLLOWS:
 - 120213
 - 0781F
 - 10-05-2017
 - DATE OF FIRM INDEX
 - BASE FLOOD ELEVATION
 - 6'0"

ABBREVIATIONS

- L/SPH = APPLICANT
- (C) = CALCULATED
- C&G = CURB & GUTTER
- CB = CATCH BASIN
- CC = CONC
- COR = CORNER
- (D) = DELTA (CENTRAL ANGLE)
- DE = DEED
- EE = EASEMENT
- IR = IRON ROD
- IRP = IRON PIPE
- IRRC = IRON ROD & CAP
- L/ME = LAKE MAINTENANCE EASEMENT
- N/D = NAIL AND DISC
- O/R/B = OFFICIAL RECORD BOOK
- P.B./C.R. = PALM BEACH COUNTY RECORDS
- 0781F = POINT OF BEGINNING
- P.O.B. = POINT OF BEGINNING
- P.S.M. = PROFESSIONAL SURVEYOR & MAPPER
- R/W = RIGHT-OF-WAY
- U/E = UTILITY EASEMENT
- TYP = TYPICAL
- W/P = WOOD POWER POLE

SURVEYORS CERTIFICATION

TO: FIRST AMERICAN TITLE INSURANCE COMPANY

THIS IS TO CERTIFY THAT THIS MAP OR PLAT AND THE ACCOMPANYING SURVEY AND MEASUREMENTS WERE MADE IN ACCORDANCE WITH THE 2018 FLORIDA STANDARD DETAIL REQUIREMENTS FOR ALTA/NSPS LAND TITLE SURVEYS, AND INCLUDES ITEMS 1, 2, 3, 4, 7A, 8, 9, 10, 11, 13, 14, 16, 17, 18 OF TABLE A THEREOF.

THE FIELD WORK WAS COMPLETED ON FEBRUARY 25, 2022

JEFF S. HODAPP, MAPPER
FLORIDA LICENSE NO. 155111

TREE LIST

ID	Species	DBH	Height	Notes
201	15'-ROYAL PALM	238	6'-QUEEN PALM	
202	15'-ROYAL PALM	239	8'-ROYAL PALM	
203	12'-ROYAL PALM	240	6'-QUEEN PALM	
204	15'-ROYAL PALM	241	6'-QUEEN PALM	
205	15'-ROYAL PALM	242	10'-QUEEN PALM	
206	15'-ROYAL PALM	243	12'-CABBAGE PALM	
207	15'-ROYAL PALM	244	8'-ROYAL PALM	
208	15'-ROYAL PALM	245	24'-ROYAL PALM	
209	18'-ROYAL PALM	246	(2)X'-PALMS	
210	15'-ROYAL PALM	247	(2)X'-PALMS	
211	15'-ROYAL PALM	248	(2)X'-PALMS	
212	6'-OAK	249	(2)X'-PALMS	
213	6'-OAK	250	8'-QUEEN PALM	
214	6'-OAK	251	8'-QUEEN PALM	
215	6'-OAK	252	12'-ROYAL PALM	
216	8'-OAK	253	15'-ROYAL PALM	
217	9'-OAK	254	15'-ROYAL PALM	
218	15'-CABBAGE PALM	255	6'-CARROTTWOOD	
219	84'-STRANGLER FIG	256	10'-CARROTTWOOD	
220	60'-STRANGLER FIG	257	6'-GUMBOLIMBO	
221	60'-STRANGLER FIG	258	6'-GUMBOLIMBO	
222	8'-OAK	259	4'-GUMBOLIMBO	
223	8'-OAK	260	8'-LIVEOAK	
224	8'-OAK	261	18'-CABBAGEPALM	
225	12'-CABBAGE PALM	262	20'-CABBAGEPALM	
226	8'-OAK	263	8'-GUMBOLIMBO	
227	18'-OAK	264	12'-LIVEOAK	
228	24'-MANGO	265	12'-LIVEOAK	
229	10'-QUEEN PALM	266	14'-CABACA-CLIST	
230	10'-QUEEN PALM	267	24'-CABACA-CLIST	
231	8'-QUEEN PALM	268	10'-LIVEOAK	
232	10'-OAK	269	12'-LIVEOAK	
233	20'-ROYAL PALM	270	12'-LIVEOAK	
234	10'-QUEEN PALM	271	10'-LIVEOAK	
235	10'-QUEEN PALM	272	10'-LIVEOAK	
236	15'-OAK	273	18'-CABBAGEPALM	
237	15'-OAK	274	8'-LIVE OAK	

TITLE INFORMATION

TITLE COMMITMENT #NCS-987112-S110
FIRST AMERICAN TITLE INSURANCE COMPANY
COMMITMENT DATE: OCTOBER 17, 2019 AT 8:00 AM

NO. BOOK/PAGE

PLAT	DESCRIPTION	APPLICANT PLOTTED?
ORR 16448/1246	CLERK CERTIFICATE	YES
ORR 17029/1721	CLERK CERTIFICATE	YES
ORR 21763/1601	CLERK CERTIFICATE	YES
ORR 22580/905	CLERK CERTIFICATE	YES
ORR 22941/349	CLERK CERTIFICATE	YES
ORR 23368/340	CLERK CERTIFICATE	YES
ORR 24113/1707	CLERK CERTIFICATE	YES
ORR 26059/851	CLERK CERTIFICATE	YES
ORR 26302/1202	CLERK CERTIFICATE	YES
ORR 26332/1202	CLERK CERTIFICATE	YES
ORR 26919/892	CLERK CERTIFICATE	YES
ORR 26976/252	CLERK CERTIFICATE	YES
ORR 28152/564	CLERK CERTIFICATE	YES
ORR 28392/466	CLERK CERTIFICATE	YES
ORR 29672/1793	CLERK CERTIFICATE	YES
ORR 3010/178	CLERK CERTIFICATE	YES
ORR 5958/1067	CLERK CERTIFICATE	YES
ORR 5958/1068	CLERK CERTIFICATE	YES
ORR 5958/1075	CLERK CERTIFICATE	YES
ORR 6447/1583	CLERK CERTIFICATE	YES
ORR 9775/786	CLERK CERTIFICATE	YES
ORR 14623/352	CLERK CERTIFICATE	YES
ORR 17475/491	CLERK CERTIFICATE	YES
ORR 22286/416	CLERK CERTIFICATE	YES

LEGEND

- WATER SERVICE
- ELECTRIC SERVICE
- TELEPHONE BOX
- CABLE TV BOX
- DRAINAGE MANHOLE
- SANITARY MANHOLE
- WATER VALVE
- SANITARY VALVE
- TREE
- SIGN
- FIRE HYDRANT
- FIRE CONNECTION
- CATCH BASIN
- LIGHT POLE
- GUY WIRE ANCHOR
- WOOD UTILITY POLE
- CONCRETE UTILITY POLE
- CLEAN OUT
- CENTRIFUGAL BACKFLOW PREVENTER
- OVERHEAD WIRES
- EXISTING ELEVATION
- FEENCE

PERIMETER
SURVEYING & MAPPING
Certificate of Authorization No. LB7264
947 Clint Moore Road
Boca Raton, FL 33487
Tel: (561) 241-9988
Fax: (561) 241-5182

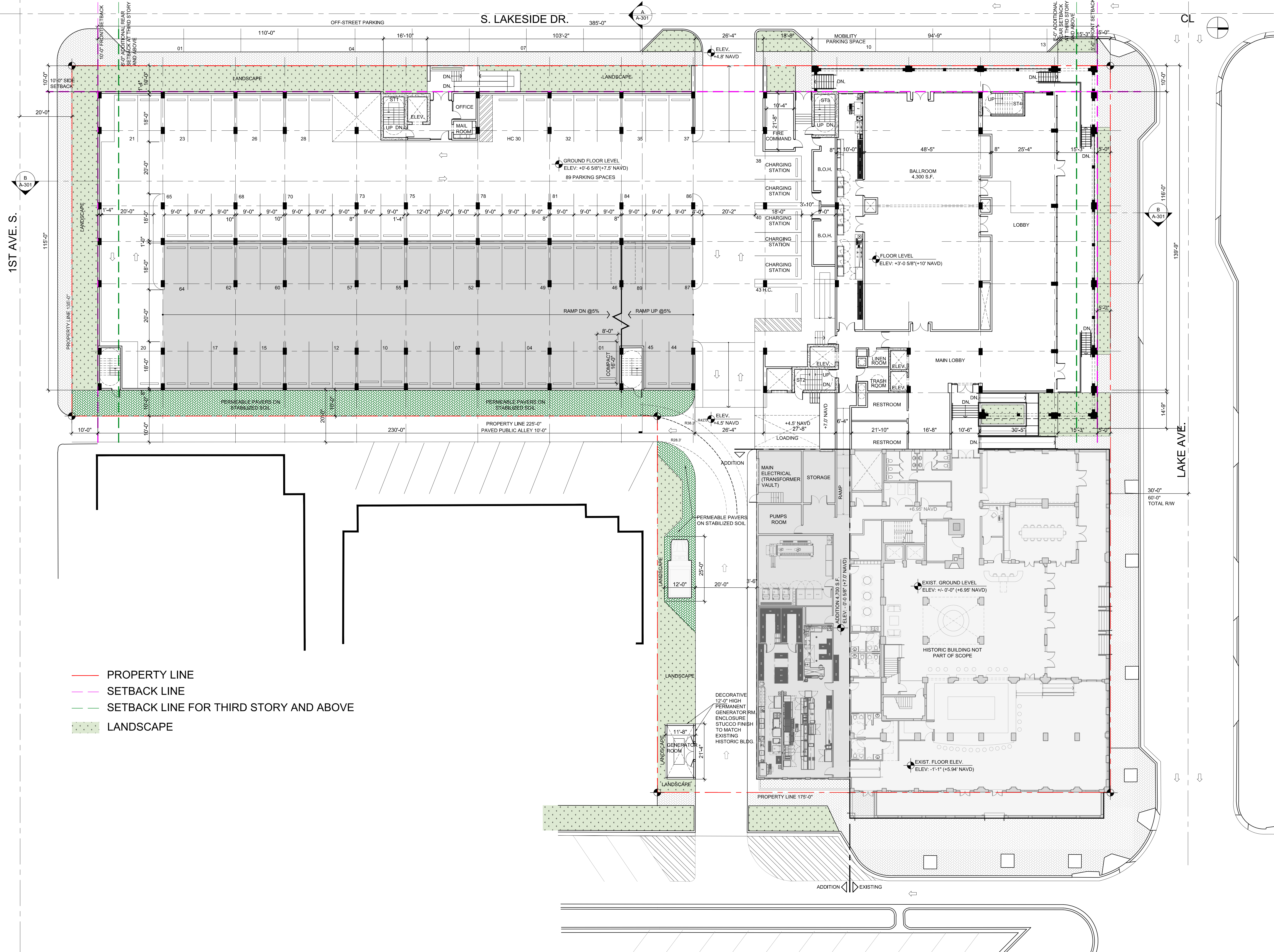
**GULFSTREAM HOTEL
ALT/NSPS
LAND TITLE SURVEY**

NO.	DATE	BY	CKD	REVISION
1	06/12/2015	JSH	JEK	ORIGINAL SURVEY
2	12/19/2019	JSH	UPDATE	SURVEY
3	02/25/2022	JSH	UPDATE	SURVEY

JEFF S. HODAPP signed by
Hod Date: 2022.03.02
app 15:38:18
SCALE 1"=20'
DRAWN AIR
CHECKED JSH
SHEET 1 OF 1

DATE	REVISION

DWG. TITLE	SITE PLAN GROUND (P2)
SCALE	1/16"=1'-0"
PROJECT NO.	2020-01
DATE	12-23-21
SHEET NUMBER	A-101



- PROPERTY LINE
- SETBACK LINE
- SETBACK LINE FOR THIRD STORY AND ABOVE
- LANDSCAPE

COPYRIGHT 2022. ALL RIGHTS RESERVED. THESE DRAWINGS AND DOCUMENTS ARE INSTRUMENTS OF SERVICE. BEILINSON GOMEZ ARCHITECTS P.A. SHALL REMAIN THE PROPERTY OF BEILINSON GOMEZ ARCHITECTS P.A. AND SHALL NOT BE REPRODUCED OR EXTENDED TO OTHER PROJECTS OR EXTENSIONS TO THE PROJECT WITHOUT THE WRITTEN CONSENT OF BEILINSON GOMEZ ARCHITECTS P.A. BEILINSON GOMEZ ARCHITECTS P.A. DISCLAIMS ANY LIABILITY FOR ERRORS OR OMISSIONS IN THESE DRAWINGS AND DOCUMENTS.