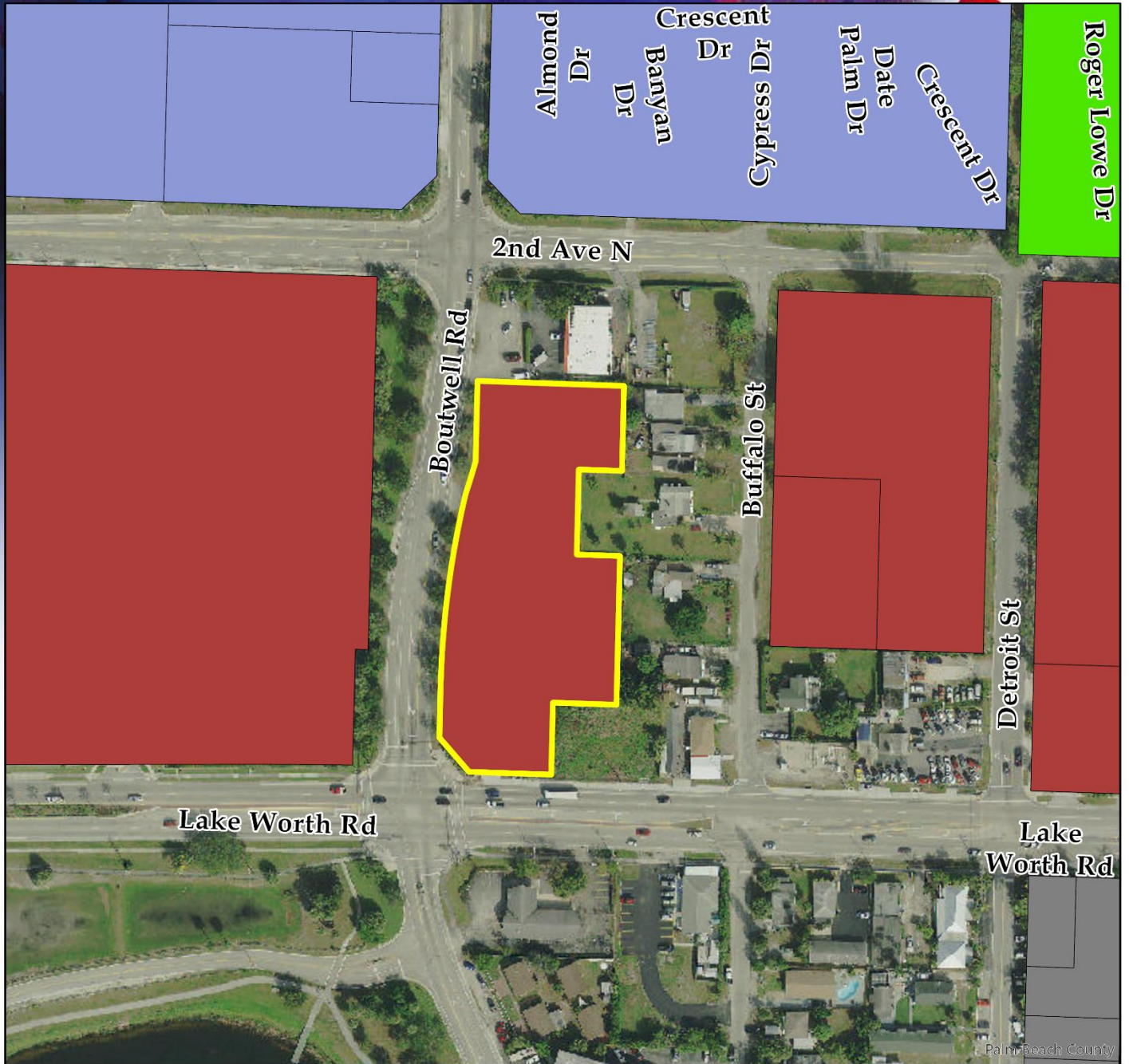




Zoning Map 2202 Lake Worth Road

Department for Community Sustainability / Planning, Zoning & Historic Preservation



Map Legend

- Mixed Use - West (MU-W)
- Public (P)
- Transit Oriented Development West (TOD-W)
- 2202 Lake Worth Road
- Industrial - Park of Commerce (I-POC)

