



City of Lake Worth Beach

Annual Report

October 1, 2018 – September 30, 2019



City of
Lake Worth
Beach
FLORIDA sm

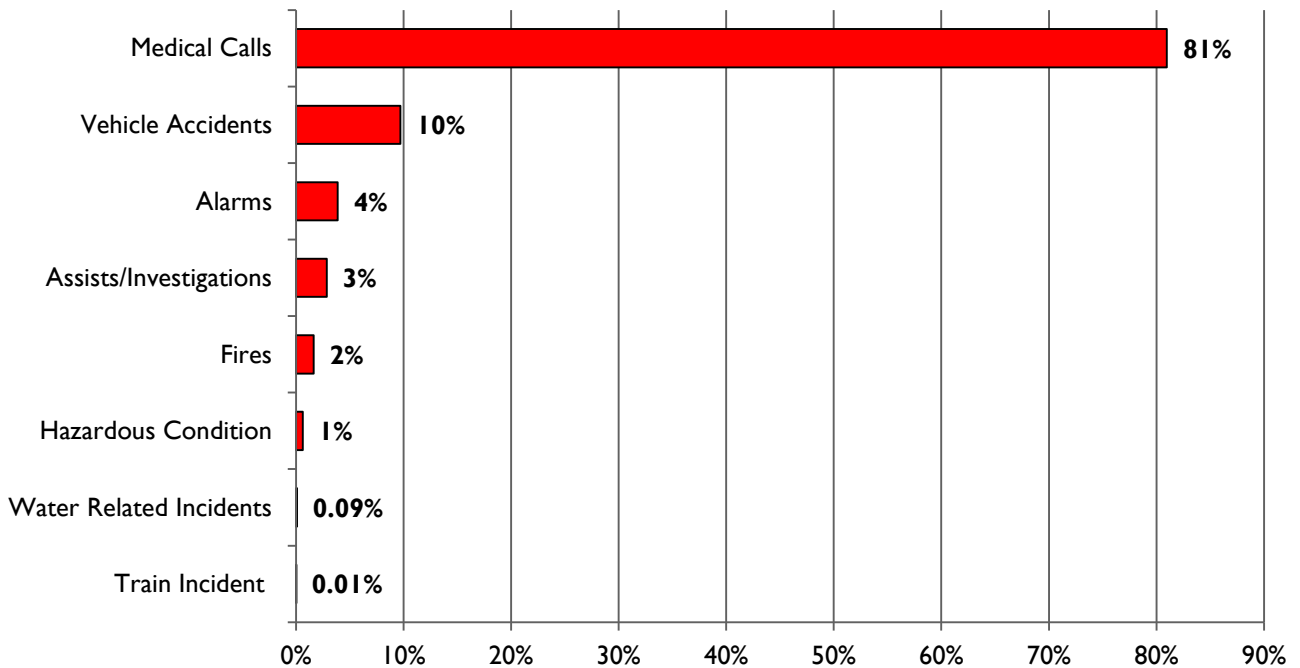
Table of Contents

Alarm Activity	3-4
Auto Accidents	5
Structure Fires	6
Fire Stations and Personnel	7-8
Apparatus	9-11
Operations	12
Special Operations	13
Medical Services	14
Air Rescue/Trauma Hawk	15
Airport Rescue and Firefighting	16
Training & Safety Division	17
Support Services	18
Alarm Office	19
Bureau of Safety Services	20
Fire & Safety Inspections	21
Community Education	22

Lake Worth Beach Alarm Activity - FY 2019

During the period from October 1, 2018 through September 30, 2019, Fire Rescue responded to 7,847 emergency calls within the City of Lake Worth Beach. The following is a breakdown of the major call types:

Lake Worth Beach Alarm Activity - FY 19

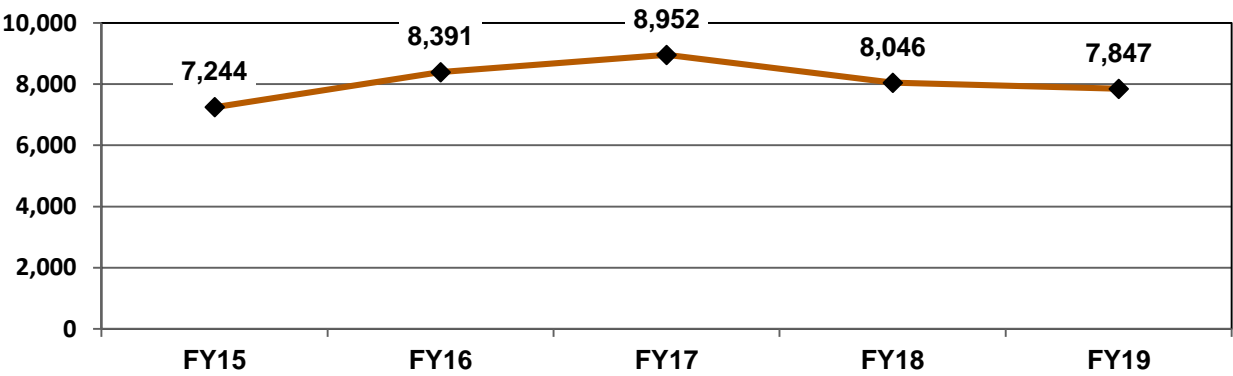


Type	# of Incidents
Medical Calls	6,353
Vehicle Accidents	778
Alarms	304
Assists/Investigations	225
Fires	129
Hazardous Condition	50
Water Related Incidents	7
Train Incident	1
Total:	7,847

Lake Worth Beach Alarm Activity FY 2015-2019

The following chart reflects the emergency response activity over the past five years.

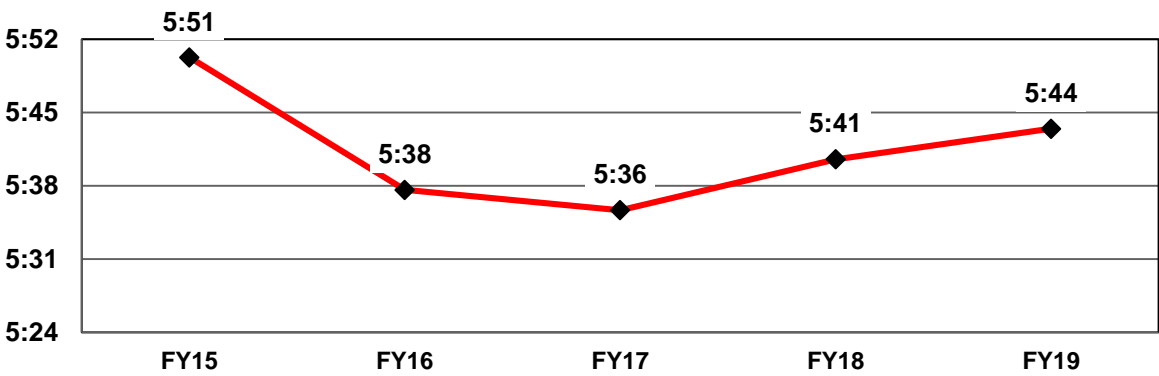
Lake Worth Beach Total Calls FY2015 - FY2019



Response Times

Total response time is determined by utilizing three components which are: call handling time, turnout time, and travel time. The following chart reflects the average response time for the past five years.

Lake Worth Beach Response Time Average FY2015 - FY2019



Auto Accidents

Fire Rescue responded to 778 vehicle accidents within Lake Worth Beach October 1, 2018 through September 30, 2019. Although vehicle accidents can be a serious matter, Palm Beach County Fire Rescue personnel are trained to handle these situations. The Training & Safety Division is currently providing ongoing extrication training for all personnel to stay proficient in the art of disassembling vehicles.



Structure Fires

Structure fires pose the most serious threat to life safety and are the highest fire loss potential to the citizens we serve. Fire Rescue must be prepared and respond to each structure fire call with adequate personnel and equipment. Therefore, each reported structure fire receives 3 fire engines, 2 rescues, 1 aerial (ladder), 1 EMS Captain, and a Battalion Chief. This is considered a national standard to adequately handle a structure fire.

Fortunately, due to smoke detectors and early fire discovery, human casualties have been held at a minimum. Palm Beach County Fire Rescue has an on-going program to install smoke detectors in homes of those who are unable due to physical or monetary needs.



Fire Stations and Personnel

The City of Lake Worth Beach is served by two primary fire stations. All stations are staffed 24 hours a day. Station 91 has a complement of 8 personnel (3 personnel are assigned to the ALS engine, 3 people are assigned to the rescue unit, an EMS Captain and a Battalion Chief). Station 93 has a complement of 6 personnel (3 are assigned to an ALS engine and 3 people are assigned to the rescue unit).



Station #91



Station #93

Fire Stations and Personnel

Surrounding Stations:

The Lake Worth Beach service area is part of our regional system and these 4 stations serve as back-up with resources and equipment when needed to better assist the 2 primary stations.



Station #37



Station #35



Station #38



Station #31

Apparatus

The following vehicles are assigned in the City of Lake Worth Beach:

Station 91

Model Year	Unit Name
2017	ALS RESCUE
2014	1250 GPM ALS ENGINE
2015	BATTALION CHIEF COMMAND
2019	EMS CAPT COMMAND
2019	DISTRICT CHIEF COMMAND



**Battalion Chief
#91**



EMS Captain #91



Engine & Rescue #91

Station 93

Model Year	Unit Name
2017	ALS RESCUE
2014	1250 GPM ALS ENGINE



Engine #93



Rescue #93

All firefighting vehicles meet current National Fire Protection Association specifications.

Apparatus

The following vehicles support the City of Lake Worth Beach from the surrounding stations :

Station 37

Model Year	Unit Name
2017	ALS RESCUE
2013	1250 GPM ALS ENGINE



Engine #37



Rescue #37

Station 31

Model Year	Unit Name
2017	ALS RESCUE
2014	1250 GPM ALS ENGINE



Rescue #31



Engine #31

All firefighting vehicles meet current National Fire Protection Association specifications.

Apparatus

The following vehicles support the City of Lake Worth Beach from the surrounding stations:

Station 35

Model Year	Unit Name
------------	-----------

2019	ALS RESCUE
------	------------

2014	70' PLATFORM TRUCK
------	--------------------



Rescue #35



Platform #35

All firefighting vehicles meet current National Fire Protection Association specifications.

Operations

The Operations Division is the largest area of Palm Beach County Fire-Rescue, responsible for the direct delivery of emergency services.

PBCFR maintains 49 fire stations throughout the county and our municipal partners, with a minimum of 295 personnel on duty at all times.

Zone coverage is maintained as required by re-locating units to fill areas of need.

PBCFR is an “all-hazards” department, capable of responding to everything from a minor medical call to a regional natural disaster.

All personnel are cross-trained in firefighting and emergency medical services, ensuring efficient delivery of fire suppression, technical rescue, vehicle extrication, and emergency medical care.

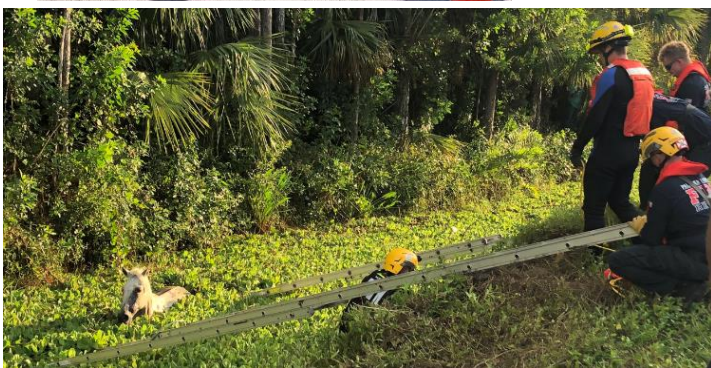
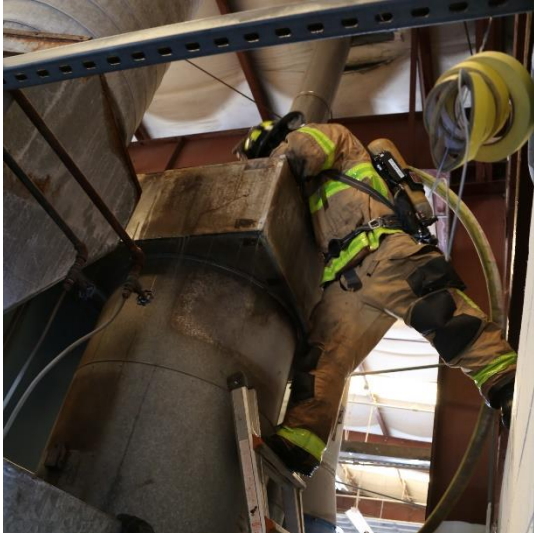


Special Operations

PBCFR maintains two Special Operations teams that responds to emergencies countywide.

Special Operations technicians receive continual training to maintain readiness in a number of disciplines, including:

- Hazardous materials response
- Confined space and technical rescue
- Dark Water Dive Rescue
- Advanced Automobile Extrication
- Explosive Ordnance Disposal (with PBSO)
- High Angle Rescue
- Trench Rescue
- Large Animal Rescue
- Structural Collapse Rescue



Medical Services

The Medical Services Division oversees both the Emergency Medical Services and Mobile Integrated Health (MIH) of PBCFR. The Medical Services Division is committed to EMS care and improving the health of PBC citizens by providing the highest level of pre-hospital advanced life support care.

MIH was designed in an effort to enhance the EMS approach to meeting needs of patients after their 911 call through multidisciplinary assessment and care coordination. PBCFR employs a Community Paramedicine Coordinator and Medical Social Work Coordinator to coordinate the MIH Program.

Our exceptional EMS services have continued to provide unparalleled emergency care for those we serve. PBCFR is among the top in the nation at cardiac arrest resuscitation, and continues to elevate standards across the country based on our best practices. This has been accomplished through a partnership of evidence based science and innovative medical protocols and techniques. PBCFR has continuously been recognized both nationally and internationally for our medical and trauma emergency services. PBCFR Medical Services Division is prepared and honored to serve the citizens and visitors of Palm Beach County.



Air Rescue/Trauma

Palm Beach County is home to two Level I Trauma Centers, at St Mary's Hospital and Delray Community Hospital. This is the highest level of care designated by the state of Florida. Critical patients are transported either by ground ambulance, or by one of two Trauma Hawk helicopters.

In partnership with the Health Care District, PBCFR provides paramedics and flight nurses to rapidly transport injured patients, increasing their chance for survival.



Aircraft Rescue & Firefighting (ARFF)

Residents and visitors of Palm Beach County receive rapid response to medical calls and fire suppression in the terminals and on the airfield of Palm Beach International Airport(PBIA) from our firefighter/paramedics of Station 81 which is known as our Aircraft Rescue Firefighting(ARFF) station.

Station 81 is located on the airfield at PBIA and houses several large specialized ARFF fire suppression “Dragon” units, capable of quickly delivering large amounts of firefighting foam and water in the event of an aircraft incident on the airfield.



Training & Safety Division

The Training & Safety Division is responsible for training PBCFR's existing 1260+ certified Firefighters, 200 support personnel, and new recruits in Fire (All Hazards), EMS and continuing education utilizing up-to-date content and cutting edge techniques. It operates using state-of-the-art technology to deliver constant, repeatable training through the department's training facility classroom's, burn building, training tower, numerous props and online intranet sites. The Video Production Department support the Training & Safety Division by producing training videos distributed over the intranet and County Cable Channel 20. The Video Production Department provides video and still photography for scheduled seminars, conferences, promotions, and graduations.



Support Services

Support Services provides logistical support for the 49 fire stations, as well as equipment and apparatus maintenance.

The areas of responsibility are comprised of several areas:

- Apparatus purchase and repair
- Facility construction and maintenance
- Information Technology (ITS)
- Communications

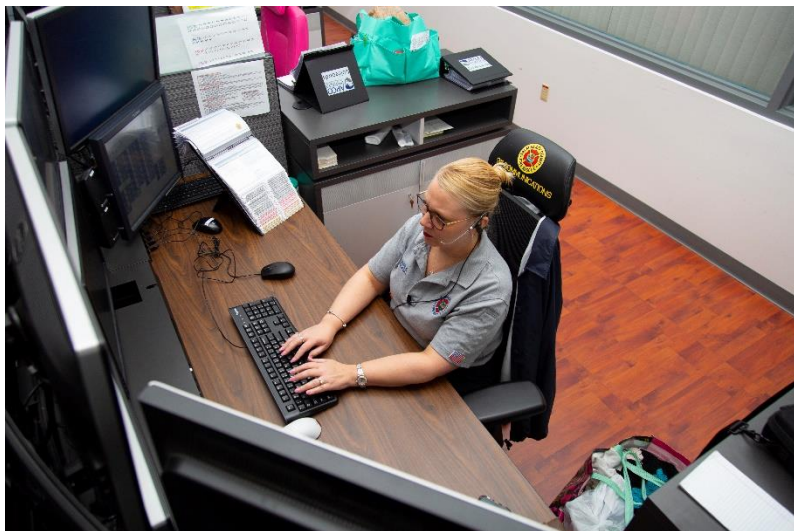
Existing vehicles are maintained at our state of the art shop on Vista Parkway, where technicians service vehicles from Palm Beach County and several other fire departments.

Palm Beach County Fire-Rescue's Capital Improvement Plan provides for the purchase and replacement of vehicles annually, to maintain the best possible fleet.

New technology is constantly evaluated to improve operational efficiency in our service delivery.



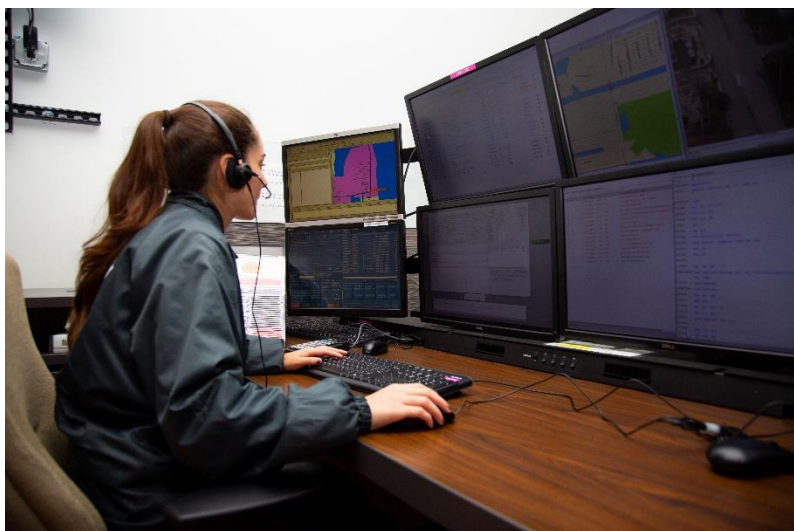
Alarm Office



PBCFR's Communications Center (Alarm Office) is a multi-agency operation that handles all fire and medical emergency communications for PBCFR, including seven additional municipal Fire Rescue Departments.

The PBCFR Communications Center processes approximately 400,000 phone calls annually resulting in over 200,000 dispatched events. This count includes ALL incoming (both Admin and 911) and outbound calls processed.

Dispatchers are highly trained, able to locate and provide rapid service to callers and emergency personnel.



Bureau of Safety Services (BOSS)

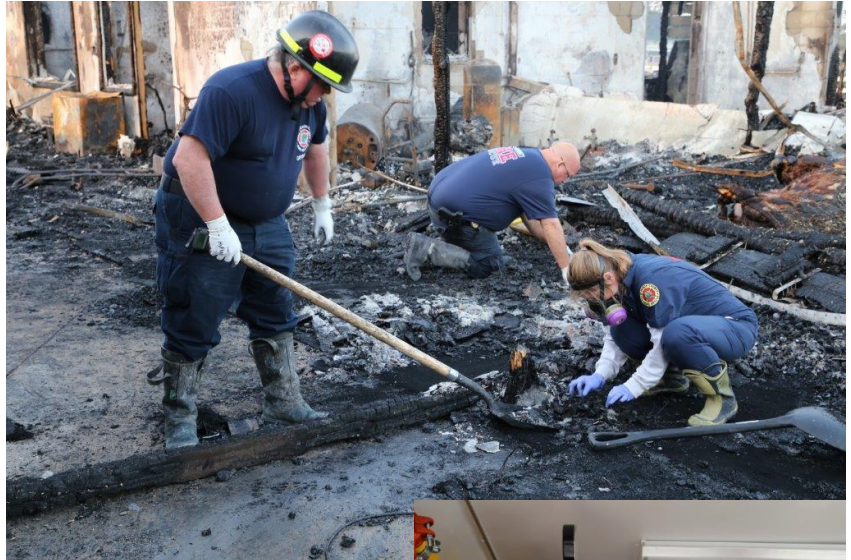
The Bureau of Safety Services is responsible for a number of fire prevention activities, as well as fire investigations.

Bureau inspectors visit commercial businesses and multi-family dwellings annually, ensuring compliance with the Fire Prevention Code.

New construction must go through Plans Review to ensure that the building meets current code.

Investigators are responsible for determining cause and origin for suspicious fire, and making criminal arrests.

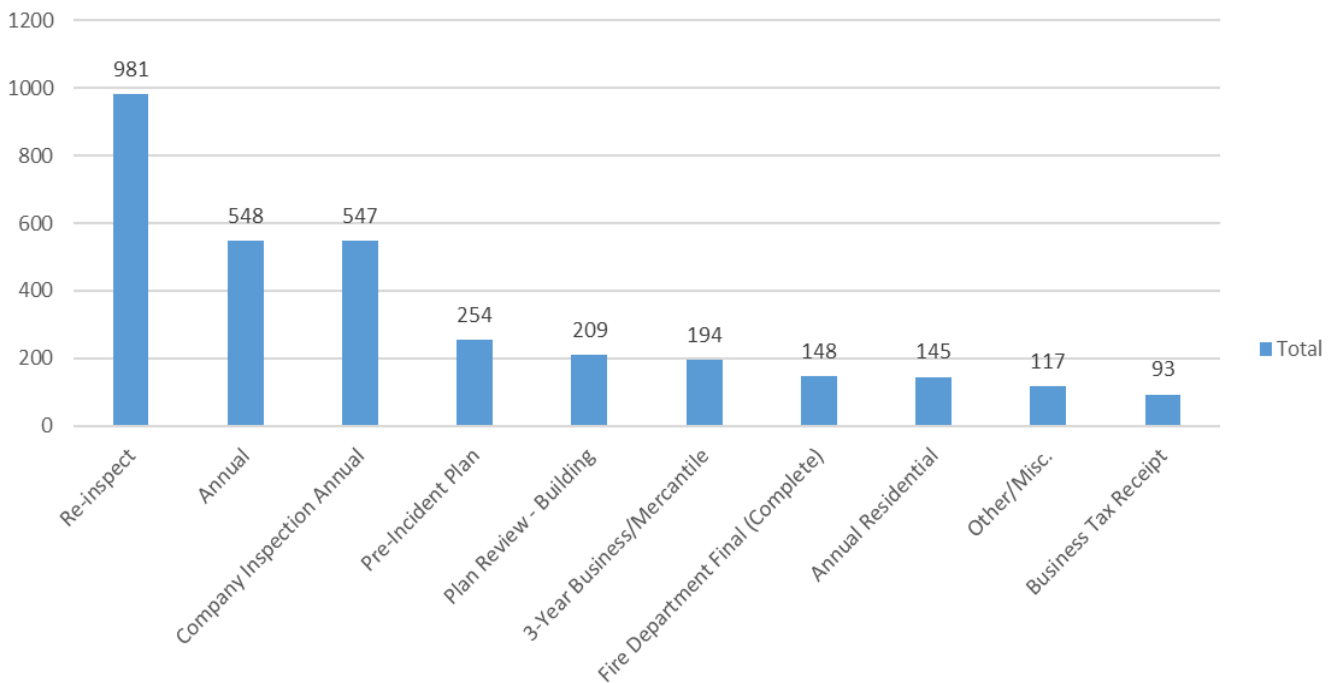
The Office of the Fire Marshal is responsible for the development, revision, and enforcement of the Fire Prevention Code in Palm Beach County.



Fire and Safety Inspections

Palm Beach County Fire Rescue's Bureau of Safety Services conducts safety and fire inspections annually on commercial and multi-family buildings. The purpose of these inspections is to increase fire safety and assure compliance with the local fire code. Additionally, all residential inspections are completed by the station personnel. This is part of our Residential/Company Inspection program which requires inspections of all buildings with three or more living units. These inspections are conducted on a regular basis depending on the type of property. During these inspections, the personnel are able to answer any questions from the residents, or they may be able to assist them with any other fire related needs. This graph represents the top inspection activities for the City of Lake Worth Beach.

LAKE WORTH BEACH Inspection Activity FY2019



Community Education Programs

This past fiscal year 995 community education programs were conducted in the City of Lake Worth Beach. These programs brought fire safety and education training to 22,709 individuals, which resulted in a total of 13,550 contact hours. A complete list of these classes is attached to this report.

Community Educators provide instruction on a variety of topics, as well as offer speakers for presentations.

Presentations include:

- Fire safety in the home
- Carbon monoxide awareness
- Disaster preparedness
- Hands-only CPR

As part of our ongoing commitment to injury prevention, classes are also offered for fall prevention for our elderly citizens.

Car seats are installed at a number of fire stations throughout the county, and swim lessons for children are offered as part of the Drowning Prevention Coalition.

