

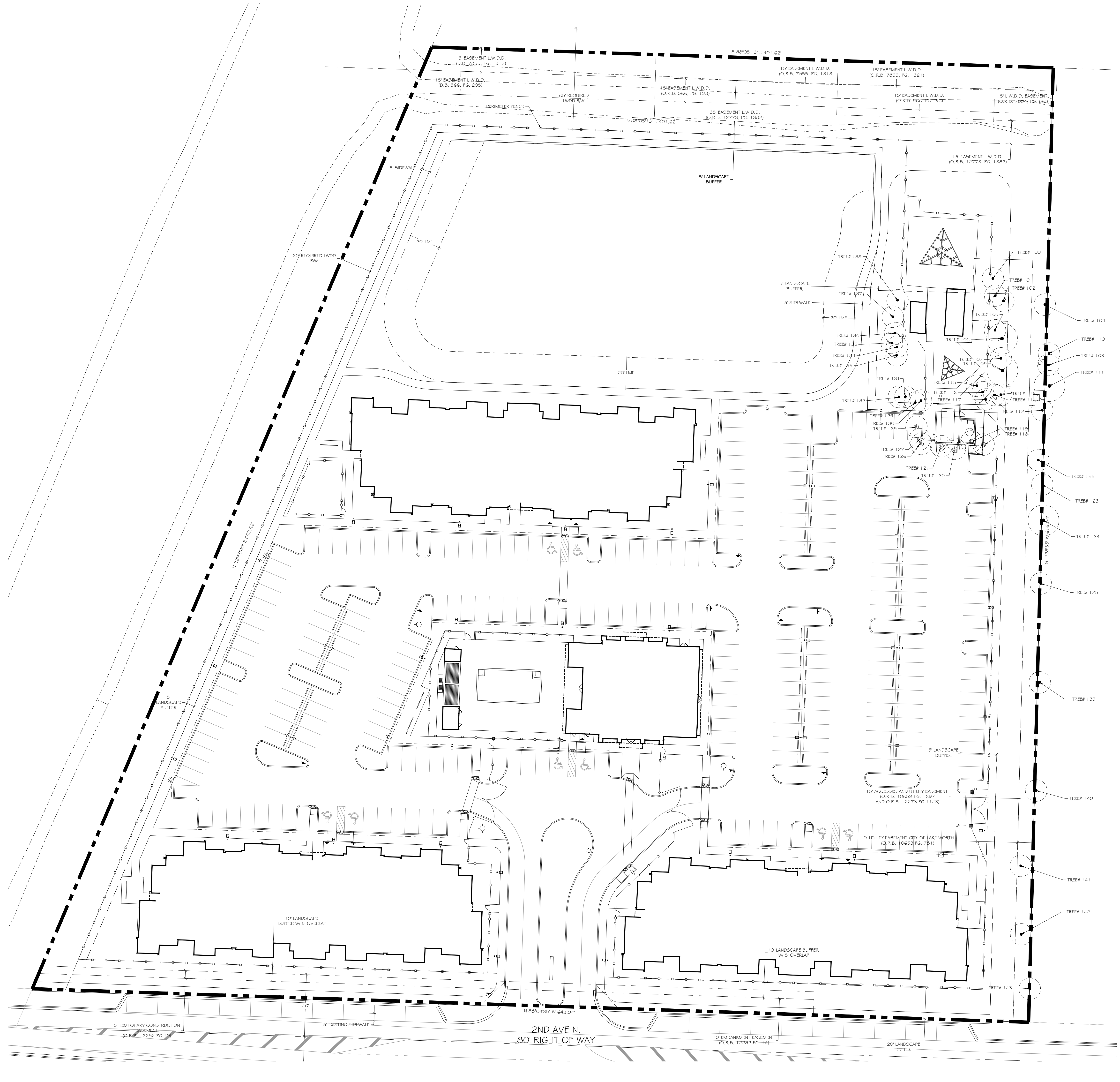
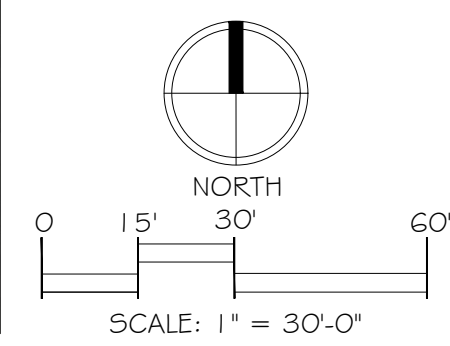
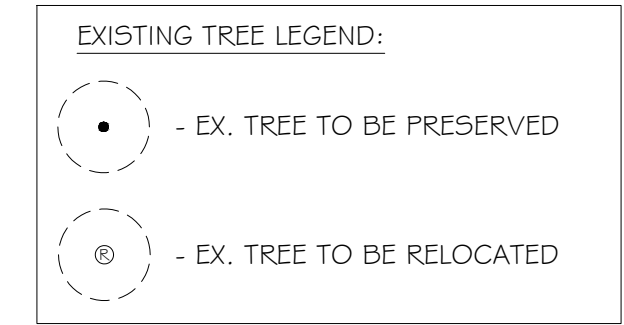
Consultants:

Revisions:  
 7/29/22- Comments  
 10/12/22- Comments

**RESIDENCES AT LAKE WORTH**  
 Lake Worth, Florida  
 Richman Group Development

TAG #:	SPECIES:	DBH:	DISPOSITION:	NOTES:
100	CABBAGE PALM	24"	PRESERVE	
101	CABBAGE PALM	24"	PRESERVE	
102	CABBAGE PALM	24"	PRESERVE	
104	CABBAGE PALM	15"	PRESERVE	
105	CABBAGE PALM	15"	PRESERVE	
106	LIVE OAK	20"	PRESERVE	
107	CABBAGE PALM	18"	PRESERVE	
108	LIVE OAK	24"	PRESERVE	
109	CABBAGE PALM	20"	PRESERVE	
110	CABBAGE PALM	20"	PRESERVE	
111	LIVE OAK	24"	PRESERVE	
112	CABBAGE PALM	20"	PRESERVE	
113	CABBAGE PALM	15"	PRESERVE	
114	CABBAGE PALM	14"	PRESERVE	
115	CABBAGE PALM	20"	PRESERVE	
116	CABBAGE PALM	20"	PRESERVE	
117	CABBAGE PALM	12"	PRESERVE	
118	CABBAGE PALM	12"	RELOCATE	
119	CABBAGE PALM	24"	RELOCATE	
120	CABBAGE PALM	24"	RELOCATE	
121	CABBAGE PALM	24"	RELOCATE	
122	CABBAGE PALM	30"	PRESERVE	
123	CABBAGE PALM	24"	PRESERVE	
124	LIVE OAK	30"	PRESERVE	
125	CABBAGE PALM	24"	PRESERVE	
126	CABBAGE PALM	18"	RELOCATE	
127	CABBAGE PALM	18"	RELOCATE	
128	CABBAGE PALM	18"	RELOCATE	
129	CABBAGE PALM	30"	PRESERVE	
130	CABBAGE PALM	18"	PRESERVE	
131	CABBAGE PALM	30"	PRESERVE	
132	CABBAGE PALM	18"	PRESERVE	
133	CABBAGE PALM	18"	PRESERVE	
134	CABBAGE PALM	18"	PRESERVE	
135	CABBAGE PALM	30"	PRESERVE	
136	CABBAGE PALM	30"	PRESERVE	
137	CABBAGE PALM	24"	PRESERVE	
138	CABBAGE PALM	30"	PRESERVE	
139	CABBAGE PALM	12"	PRESERVE	
140	CABBAGE PALM	18"	PRESERVE	
141	CABBAGE PALM	12"	PRESERVE	
142	CABBAGE PALM	12"	PRESERVE	
143	CABBAGE PALM	18"	PRESERVE	

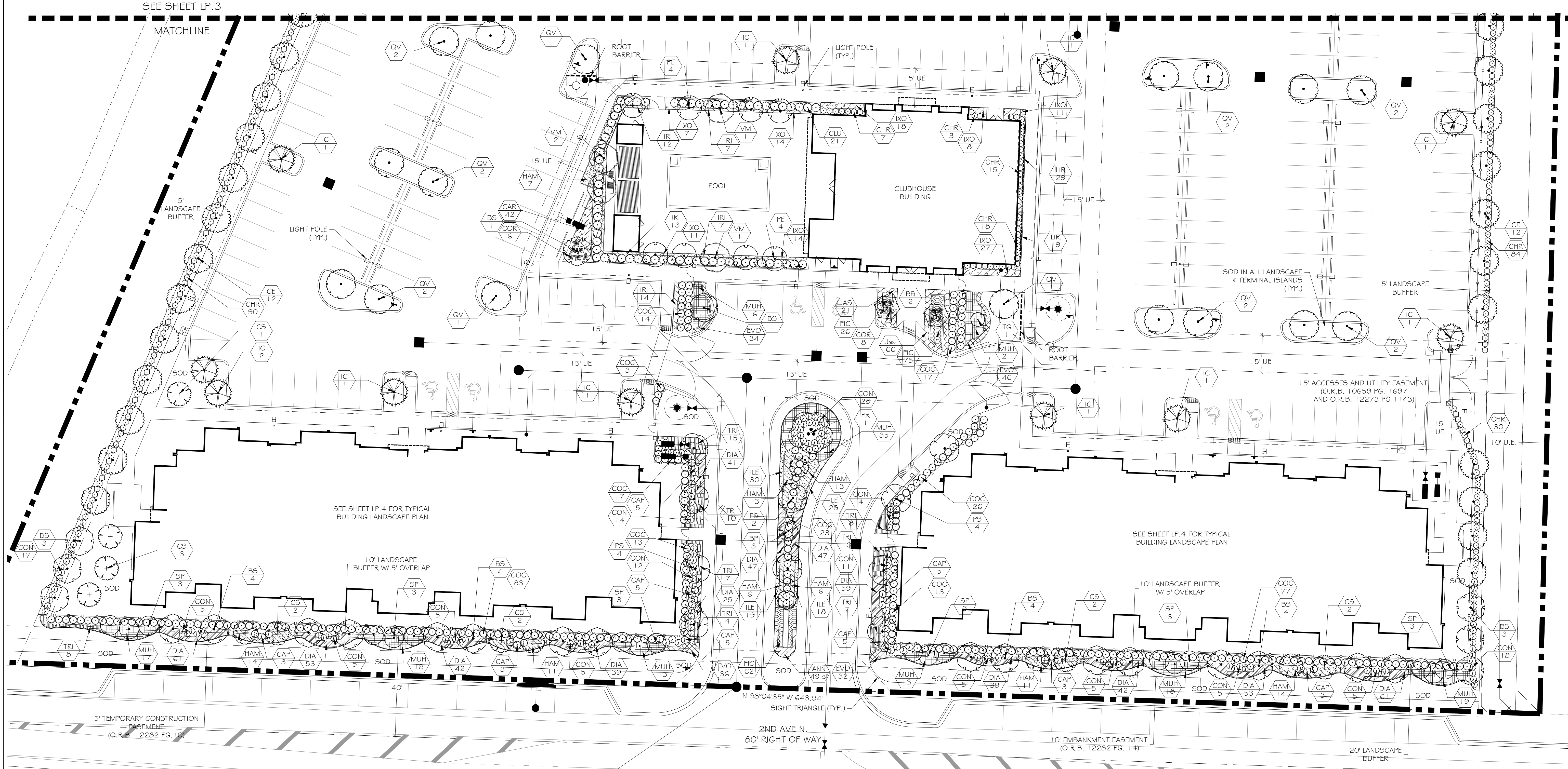
NOTES:  
 -EXISTING TREE AND PALM LOCATIONS AND SIZES PROVIDED BY TREE AND TOPO SURVEY BY CAULFIELD & WHEELER, INC.  
 -ALL RELOCATED TREE MATERIAL MUST HAVE IRRIGATION AT TIME OF INSTALLATION.



Consultants:

Revisions:  
 7/12/22 - Comments  
 10/12/22 - Comments

**RESIDENCES AT LAKE WORTH**  
 Lake Worth, Florida  
 Richman Group Development



**LANDSCAPE REQUIREMENT CHART:**

LOCATION/ AREA	CODE REQUIREMENT	REQUIRED	PROVIDED
NORTH PL: 401.62 L.F. 5' LANDSCAPE BUFFER (SHEET LP.3)	1 TREE PER 20 L.F. 2' HT. HEDGE	20 TREES 2' HT. HEDGE	20 TREES 2' HT. HEDGE
EAST PL: 616.54 L.F. 5' LANDSCAPE BUFFER (SHEETS LP.2 & LP.3)	1 TREE PER 20 L.F. 2' HT. HEDGE	31 TREES 2' HT. HEDGE	31 TREES 2' HT. HEDGE
WEST PL: 660.62 L.F. 5' LANDSCAPE BUFFER (SHEETS LP.2 & LP.3)	1 TREE PER 20 L.F. 2' HT. HEDGE	33 TREES 2' HT. HEDGE	33 TREES 2' HT. HEDGE
SOUTH PL: 643.94 L.F. MINUS ENTRANCE = 584.3 L.F. 10' LA. BUFFER W/ OVERLAP 20' LANDSCAPE BUFFER (SHEET LP.2)	1 SMALL TREE PER 15 L.F. OR 1 MEDIUM TREE PER 20 L.F. OR 1 LARGE TREE PER 25 L.F. 2' HT. HEDGE & GROUNDCOVER	39 SMALL TREES OR 30 MEDIUM TREES OR 24 LARGE TREES 2' HT. HEDGE & GROUNDCOVER	24 LARGE TREES 6' HT. HEDGE & GROUNDCOVER
NATIVE TREE REQ'S: (SHEET LP.2 & LP.3)	75% OF ALL REQUIRED TREES	75% OF TOTAL	89% OF TOTAL
NATIVE PLANTING REQ'S: (SHEET LP.2 & LP.3)	75% OF ALL REQUIRED VEGETATION	75% OF TOTAL	92% OF TOTAL
TREES AND PALMS OVERALL SITE: (SHEET LP.2 & LP.3)	PALMS SHALL NOT BE MORE THAN 20% OF REQUIRED TREES	PALMS 20% OR LESS OF REQUIRED TREES	TREES: 191 (89.3%) PALMS: 23 (10.7%)

**PLANT SCHEDULE**

QTY	BOTANICAL NAME	COMMON NAME	REMARKS
2	Bauhinia x blakeana	Hong Kong Orchid Tree	12' HT. X 5' SPR. 2.5' CAL.
3	Bougainvillea x 'Purple Queen' TM	Purple Queen Bougainvillea	5' HT. X 3' SPRD. STANDARD
36	Bursera simaruba	Gumbo Limbo	12' HT. X 5' SPR. / 2.5' CAL. MIN.
30	Coccoloba diversifolia	Pigeon Plum	12' HT. X 5' SPR. / 2.5' CAL. MIN.
35	Conocarpus erectus	Green Buttonwood	12' HT. X 5' SPR. / 2.5' CAL. MIN.
16	Cordia alliodora	Orange Ginger Tree	12' HT. X 5' SPR. / 2.5' CAL. MIN.
20	Ilex cassine	Dawson Holly	12' HT. X 5' SPR. 2.5' CAL. MIN.
1	Phoenix rostrata	Senegal Date Palm	16' CT. HT. 1 1/2" TRUNKS MIN.
10	Phoenix sylvestris	Sylvestre Date Palm	12' CT. MATCHED, CONTINUOUS TRUNK DIAMETER, FLORIDA FANCY
4	Psychoperrma elegans	Alexander Palm	16' OA HT. 10' CT MIN. DOUBLE TRUNK, MATCHED
24	Quercus virginiana 'Highrise'	Highrise Live Oak	12' HT. X 5' SPR. 2.5' CAL. MIN.
7	Relocated Sabal palmetto	Cabbage Palmetto	Relocated from on site
18	Sabal palmetto	Cabbage Palmetto	18' - 22' OA. HT. SLICK TRUNK
1	Tibouchina granulosa	Purple Glory Tree	6' HT X 4' SPR.
4	Vescheria montgomeryana	Montgomery Palm	20-22' O.A. HT. 16' G.W. MIN. SINGLE TRUNK

SHRUBS	QTY	BOTANICAL NAME	COMMON NAME	REMARKS
CAP	37	Capparis cynophallophora	Jamaica Capser	36" HT. / 7 GAL. MIN.
CHR	544	Chrysanthemum 'saco' 'Rosa Tyf'	Real Top Chrysanthemum	24" HT. X 24" SPR. @ 30" O.C.
CLU	67	Clusia igthifera	Small Leaf Clusia	6' HT. X 3.5' SPR. @ 42" O.C.
COC	264	Coccoloba uvifera	Sea Grape	36" HT. X 30" SPR. @ 36" O.C.
CON	199	Conocarpus erectus 'Sencous'	Silver Buttonwood	36" HT. X 30" SPR. @ 30" O.C.
COR	14	Cordyline fruticosa 'Real Sister'	Real Sister Ti	36" HT. X 18" SPR. AS SHOWN
MFR	25	Mycarthenes fragrans	Simpson's Stopper	6' HT. X 3' SPR. @ 36" O.C.

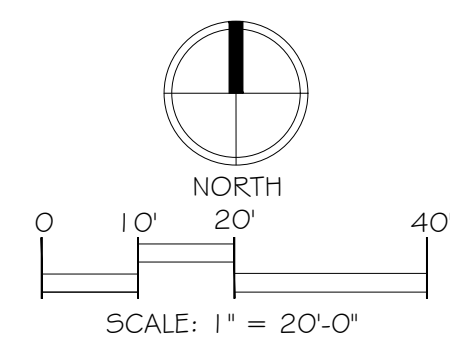
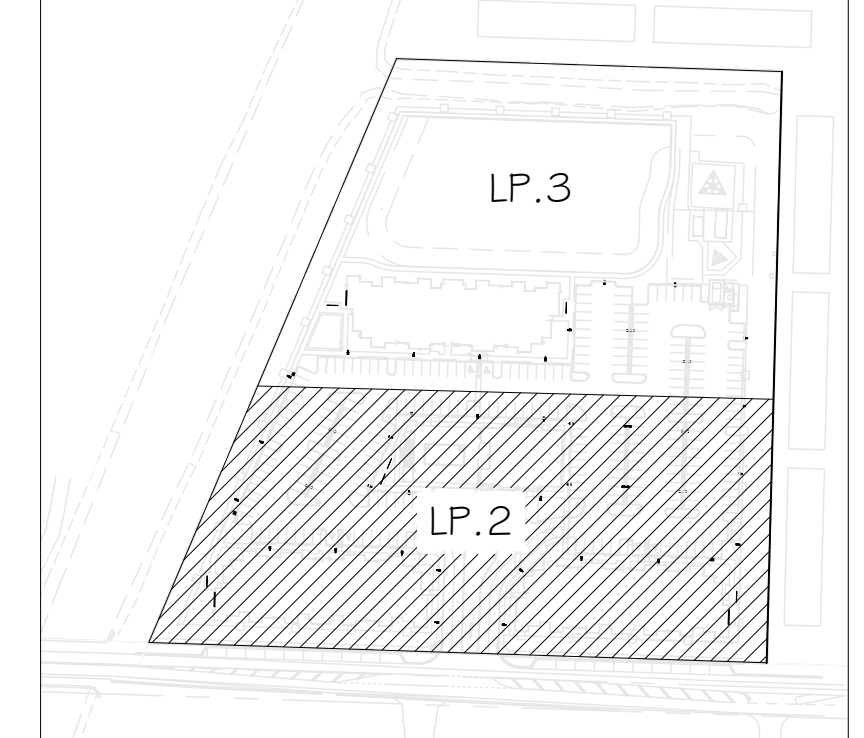
SHRUB AREAS	QTY	BOTANICAL NAME	COMMON NAME	REMARKS
CAR	42	Carissa macrocarpa 'Emerald Blanka'	Emerald Blanka Carissa	12" HT. X 12" SPR. @ 18" O.C.
FIC	163	Ficus macrocarpa 'Green Island'	Green Island Ficus	14" HT. X 14" SPR. @ 14" O.C.
HAM	95	Hamelia nodosa	Dwarf Firebush	24" HT. X 18" SPR. @ 30" O.C.
ILE	95	Ilex vomitoria 'Nana'	Dwarf Yaupon Holly	12" HT. X 10" SPR. @ 14" O.C.
IRI	53	Iris virginica	Blue Flag Iris	18" HT. X 14" SPR. @ 18" O.C.
IXO	122	Ixora coccinea 'Mau Sunsets'	Mau Sunset Dwarf Ixora	12" HT. X 12" SPR. @ 18" O.C.
JAS	66	Jasminum volubile	Wax Jasmine	18" HT. X 18" SPR. @ 24" O.C.
JAS	21	Jasminum volubile	Wax Jasmine	18" HT. X 18" SPR. @ 24" O.C.
MUH	170	Muhlenbergia capillans	Pink Muhly	18" HT. X 18" SPR. @ 30" O.C.
TRI	69	Tripsacum dactyloides nana	Dwarf Falahutchee Grass	18" HT. X 18" SPR. @ 30" O.C.

GROUND COVERS	QTY	BOTANICAL NAME	COMMON NAME	REMARKS
ANN	49 sf	Annual	Annual Flowers	BY CONTRACTOR
DIA	609	Dianella tasmanica	Flax Lily	12" HT. X 12" SPR. @ 14" O.C.
EVO	148	Evolvulus gomeratus 'Blue Daze'	'Blue Daze'	10" HT. X 10" SPR. @ 12" O.C.
LIR	46	Linopse muscari 'Aztec'	Aztec Lilyturf	10" HT. X 10" SPR. @ 12" O.C.

NOTES:  
 -AREAS LABELED 'SOD' TO BE ST. AUGUSTINE SOD.  
 -ALL RELOCATED TREE MATERIAL MUST HAVE IRRIGATION AT TIME OF INSTALLATION.

**KEY MAP**



Consultants:

Revisions:  
 7/29/22 - Comments  
 10/12/22 - Comments

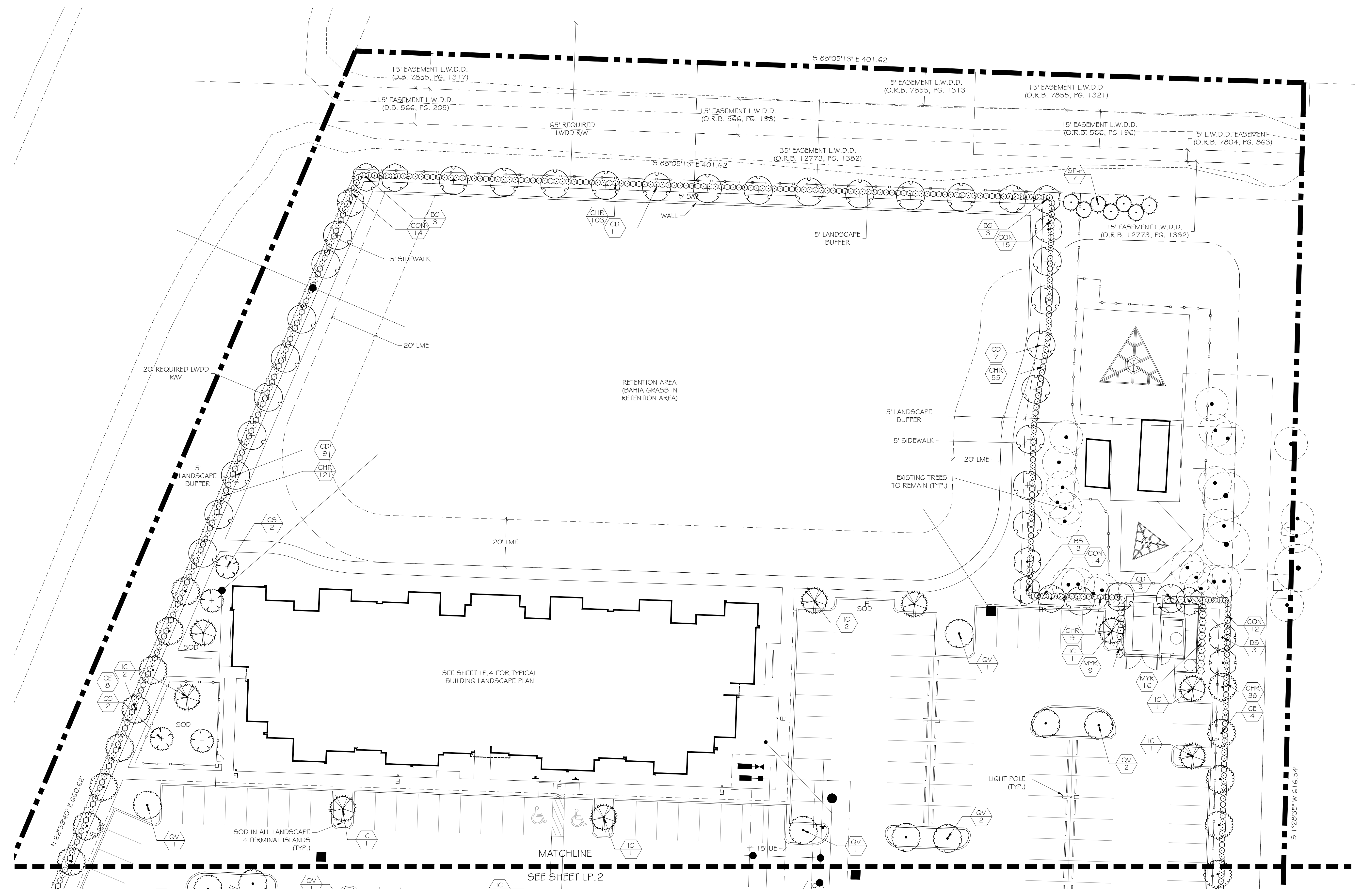
**RESIDENCES AT LAKE WORTH**  
 Lake Worth, Florida  
 Richman Group Development

ALWAYS CALL 811 TWO FULL BUSINESS DAYS BEFORE YOU DIG TO HAVE UNDERGROUND UTILITIES LOCATED AND MARKED.

Drawn By: AC  
 Drawing #: 1264  
 Date: 04/11/2022

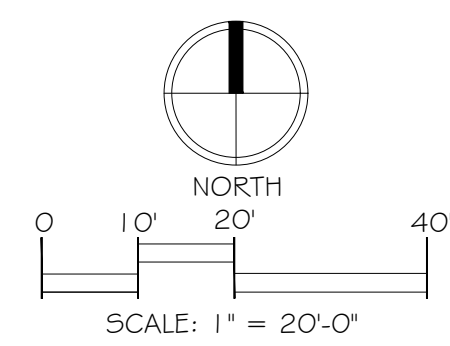
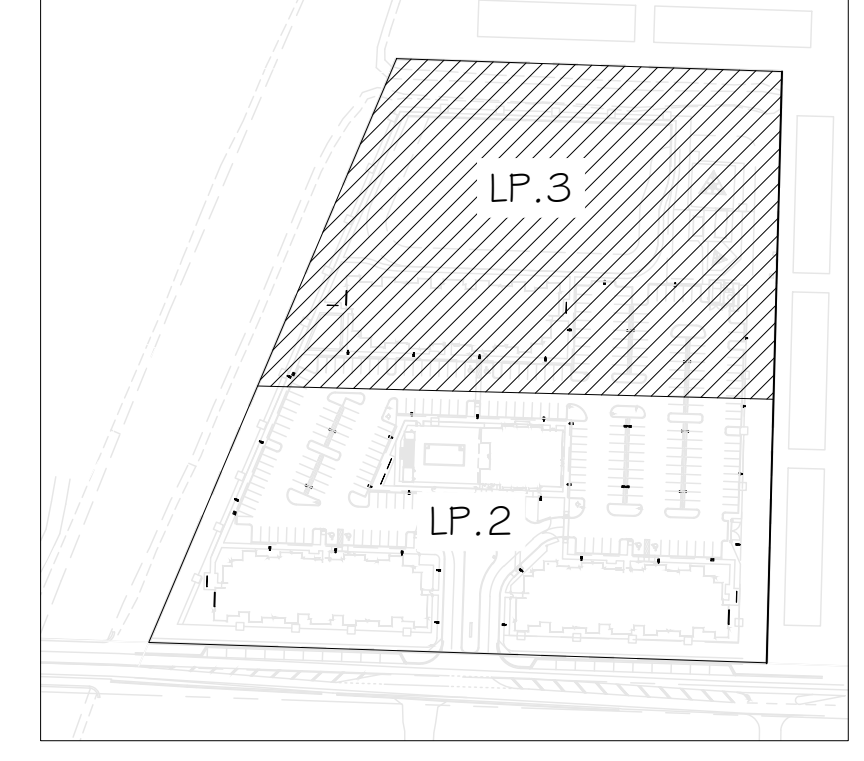
LANDSCAPE PLAN

SHEET # LP.3



NOTES:  
 -AREAS LABELED "SOD" TO BE ST. AUGUSTINE SOD.  
 -ALL RELOCATED TREE MATERIAL MUST HAVE IRRIGATION AT TIME OF INSTALLATION.  
 -SEE SHEET LP.2 FOR PLANT SCHEDULE.

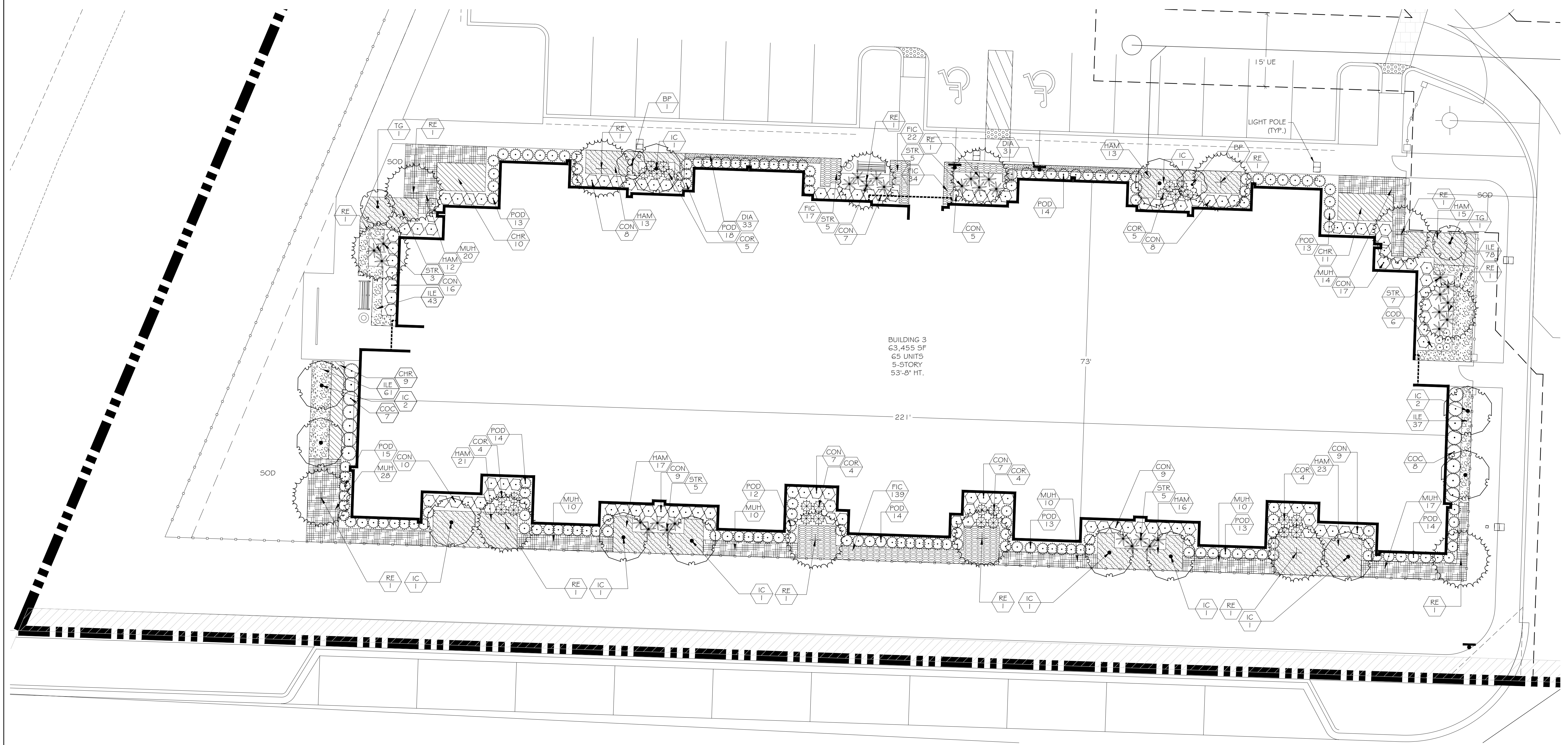
KEY MAP



Consultants:

Revisions:  
 7/29/22- Comments  
 10/12/22- Comments

**RESIDENCES AT LAKE WORTH**  
 Lake Worth, Florida  
 Richman Group Development



**TYPICAL BUILDING FOUNDATION PLANTINGS:**

FACADE:	FACADE LEGNTH:	(5' WIDTH) PLANTING AREA REQUIRED:	PLANTING AREA PROVIDED:	(1 PER 5 S.F.) SHRUBS REQUIRED:	SHRUBS PROVIDED:
NORTH	221 L.F.	1,105 S.F.	1,490 S.F.	221	338
SOUTH	221 L.F.	1,105 S.F.	1,963 S.F.	221	468
EAST	73 L.F.	365 S.F.	777 S.F.	73	149
WEST	73 L.F.	365 S.F.	1,503 S.F.	73	161

NOTE:  
 -AREAS LABELED "SOD" TO BE ST. AUGUSTINE SOD.

**PLANT SCHEDULE**

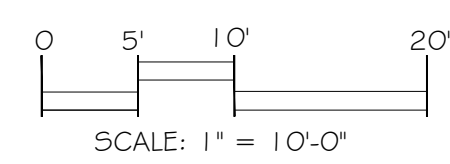
TREES	QTY	BOTANICAL NAME	COMMON NAME	REMARKS
BP	2	Bougainvillea x 'Purple Queen' TM	Purple Queen Bougainvillea	5' HT. X 3' SPRD. STANDARD
IC	12	Ilex cassine	Dahoon Holly	12' HT. X 5' SPR. 2.5' CAL. MIN.
RE	14	Roystonea elata	Florida Royal Palm	18' G.W. MIN.
TG	2	Tibouchina granulosa	Purple Glory Tree	8' HT. X 4' SPR.

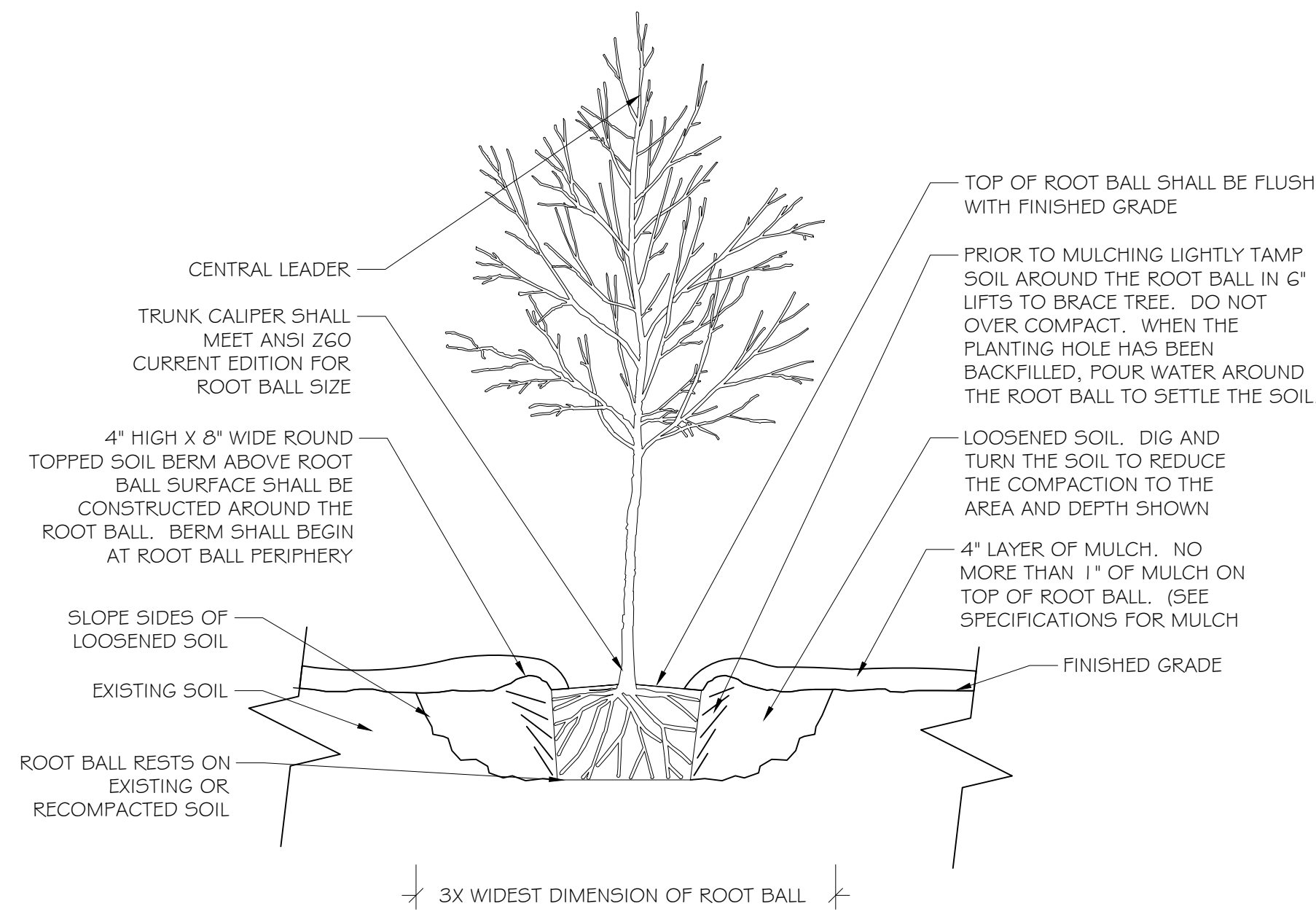
SHRUBS	QTY	BOTANICAL NAME	COMMON NAME	REMARKS
COC	15	Coccoloba uvifera	Sea Grape	30" HT. X 24" SPR. @ 36" O.C.
COD	6	Codiaeum variegatum 'Magnificent'	Croton	18" HT. X 12" SPR. @ 18" O.C.
CON	112	Conocarpus erectus 'Sericeus'	Silver Buttonwood	36" HT. X 30" SPR. @ 30" O.C.
COR	26	Cordyline fruticosa 'Red Sister'	Hawaiian Ti	36" HT. X 24" SPR. @ 2.5 O.C.
POD	153	Podocarpus macrophyllus	Podocarpus	48" HT. X 30" SPR. @ 2.5' O.C.
STR	30	Strelitzia reginae	Orange Bird Of Paradise	36" HT. X 30" SPR. @ 3' O.C.

SHRUB AREAS	QTY	BOTANICAL NAME	COMMON NAME	REMARKS
CHR	30	Chrysobalanus icaco 'Red Tip'	Red Tip Cocoplum	30" HT. X 24" SPR. @ 30" O.C.
DIA	64	Dianella tasmanica 'Blueberry'	Blueberry Flax Lily	12" HT. X 10" SPR. @ 12" O.C.
FIC	212	Ficus microcarpa 'Green Island'	Green Island Ficus	14" HT. X 14" SPR. @ 14" O.C.
HAM	130	Hamelia nodosa	Dwarf Firebush	24" HT. X 18" SPR. @ 30" O.C.
ILE	219	Ilex vomitoria 'Nana'	Dwarf Yaupon Holly	12" HT. X 10" SPR. @ 12" O.C.
MUH	119	Muhlenbergia capillaris	Pink Muhly	24" HT. X 18" SPR. @ 30" O.C.

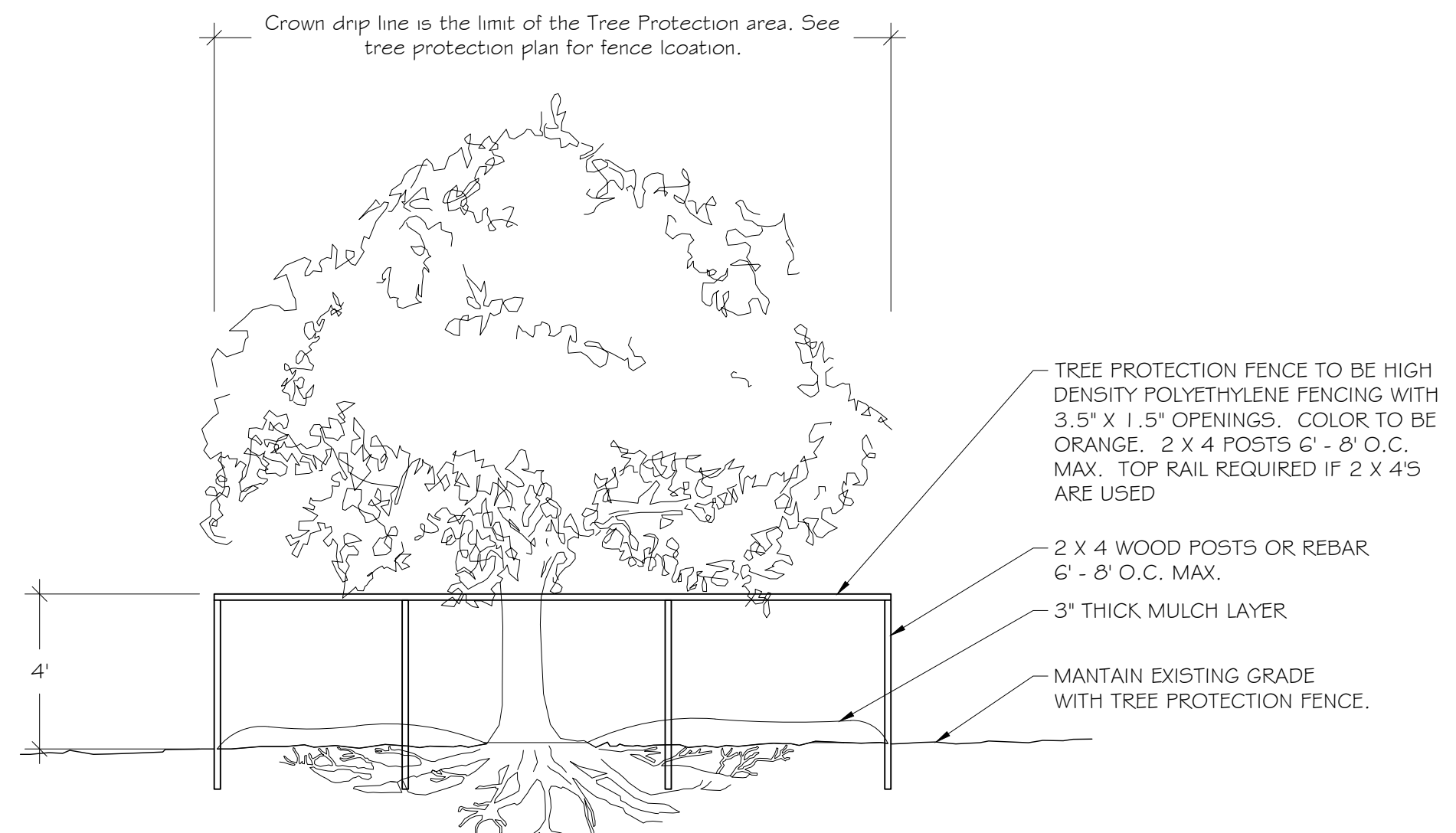


ALWAYS CALL 811 TWO FULL BUSINESS DAYS BEFORE YOU DIG TO HAVE UNDERGROUND UTILITIES LOCATED AND MARKED.



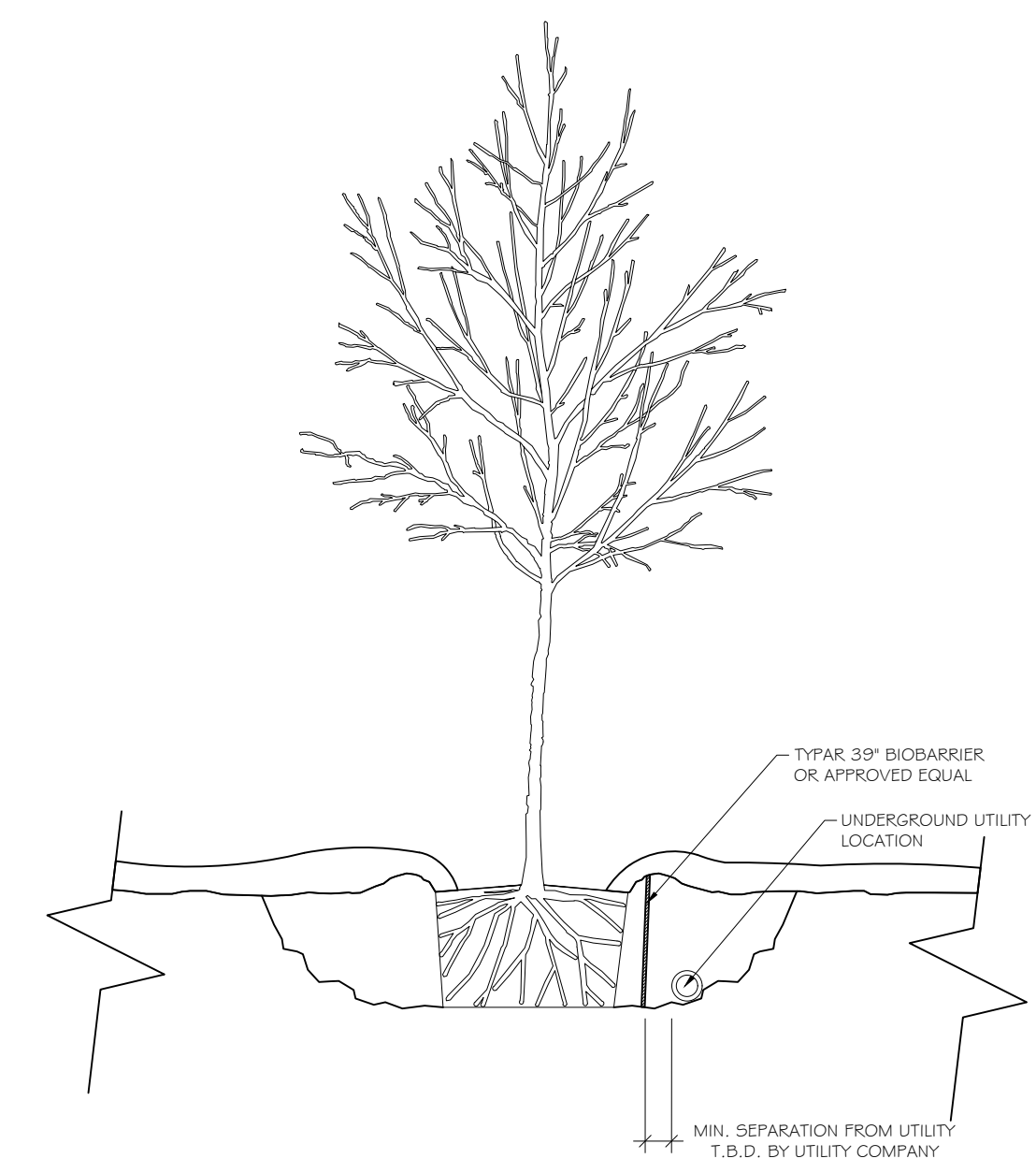
**1 TREE PLANTING DETAIL** 1/2" = 1'-0"

NOTES:  
 1. TREES SHALL BE OF QUALITY PRESCRIBED IN CROWN OBSERVATIONS AND ROOT OBSERVATIONS DETAILS AND SPECIFICATIONS.  
 2. SEE SPECIFICATIONS FOR FURTHER REQUIREMENTS RELATED TO THIS DETAIL.

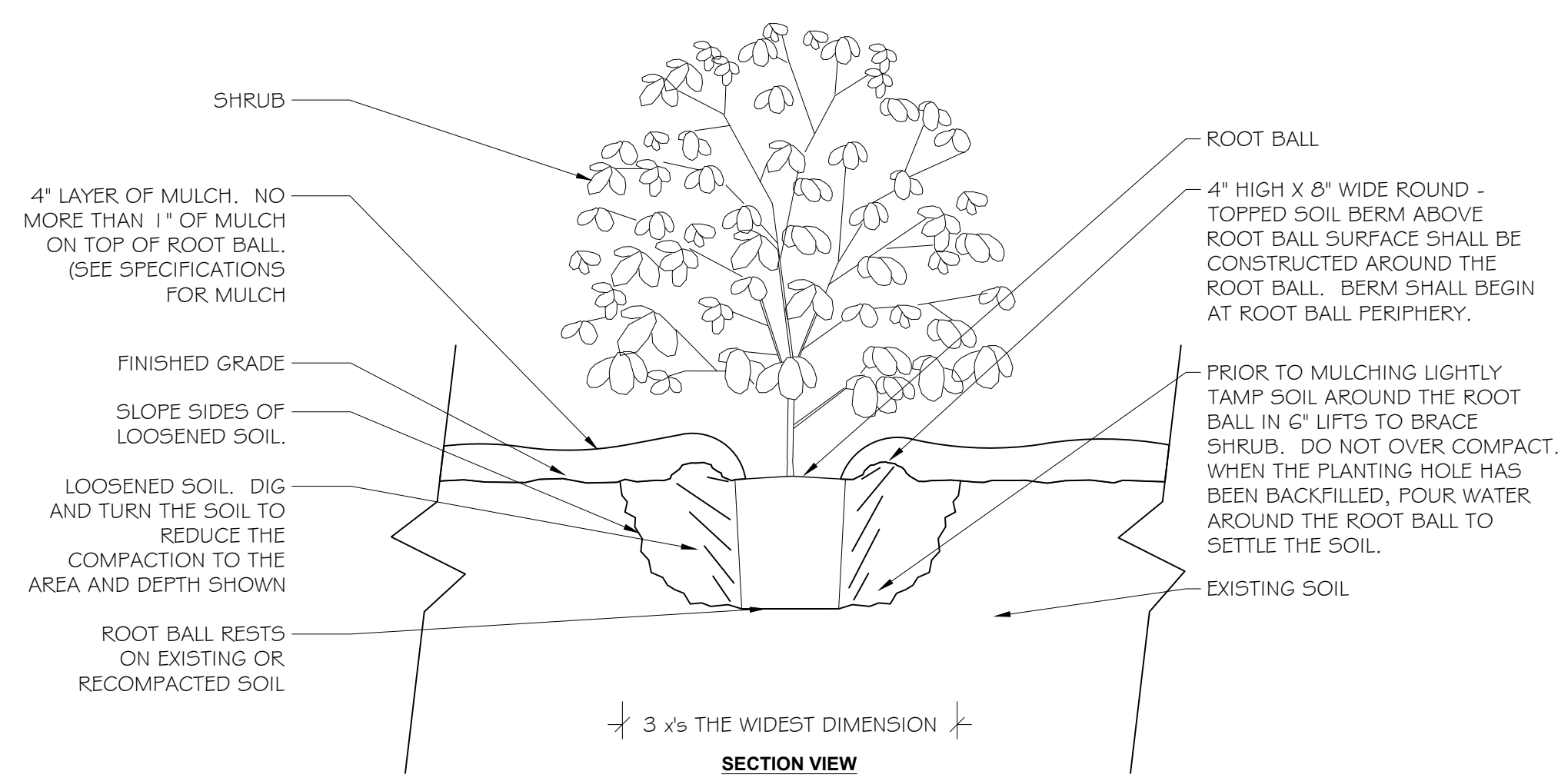


**4 TREE PROTECTION DETAIL** SCALE : 1/4" = 1'-0"

NOTES:  
 1. KEEP OUT OF TREE PROTECTION AREA  
 2. FENCE TO BE INSTALLED ALONG DRIPLINE OF EXISTING TREES  
 3. NO EQUIPMENT SHALL OPERATE INSIDE THE PROTECTIVE FENCING INCLUDING DURING FENCE INSTALLATION AND REMOVAL.

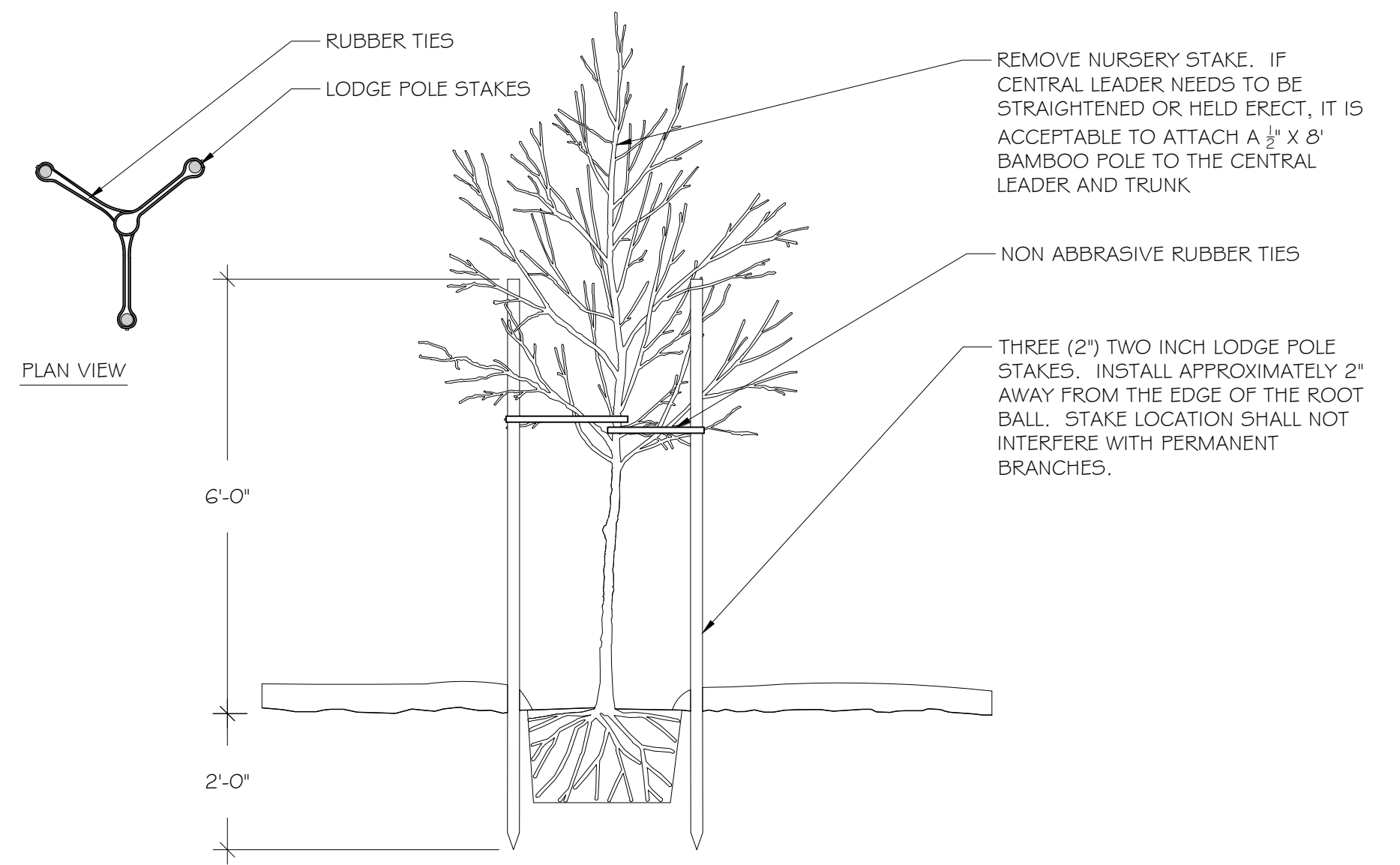


**7 ROOT BARRIER DETAIL** 1/2" = 1'-0"

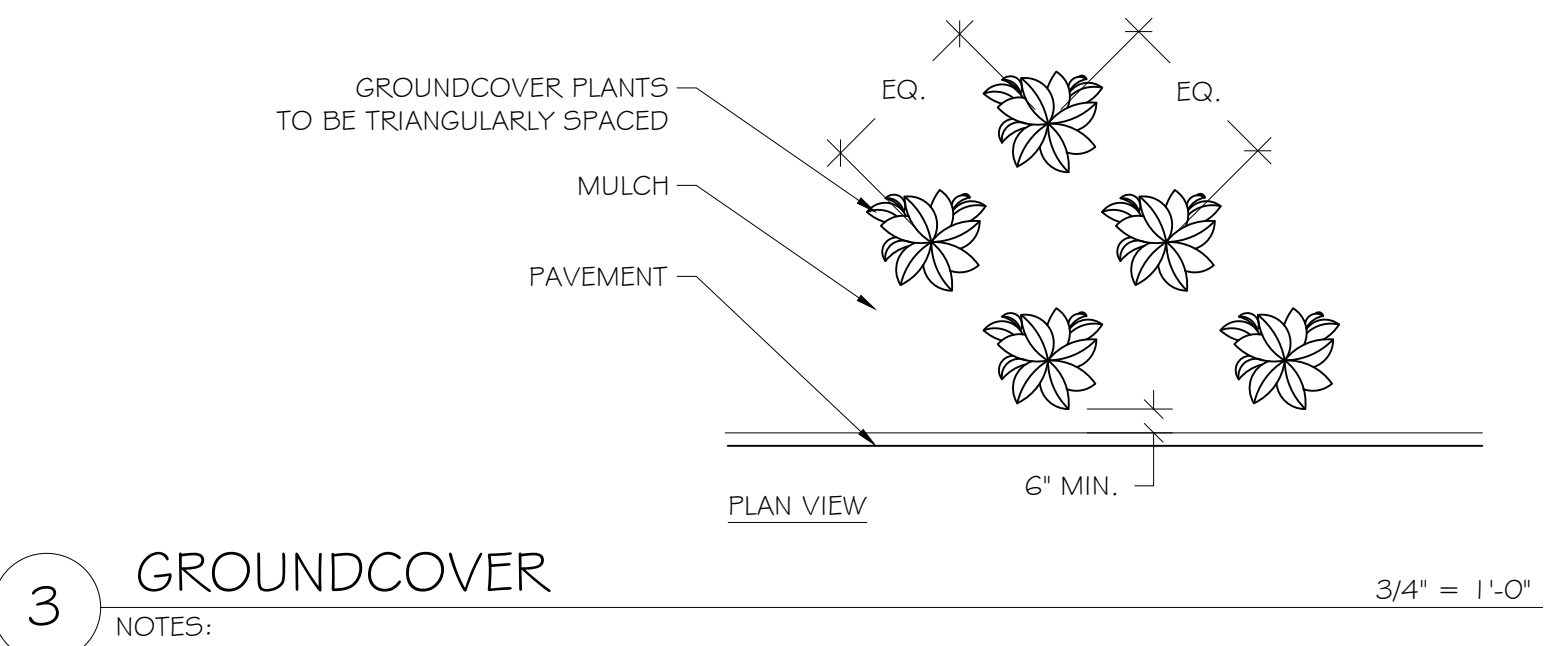
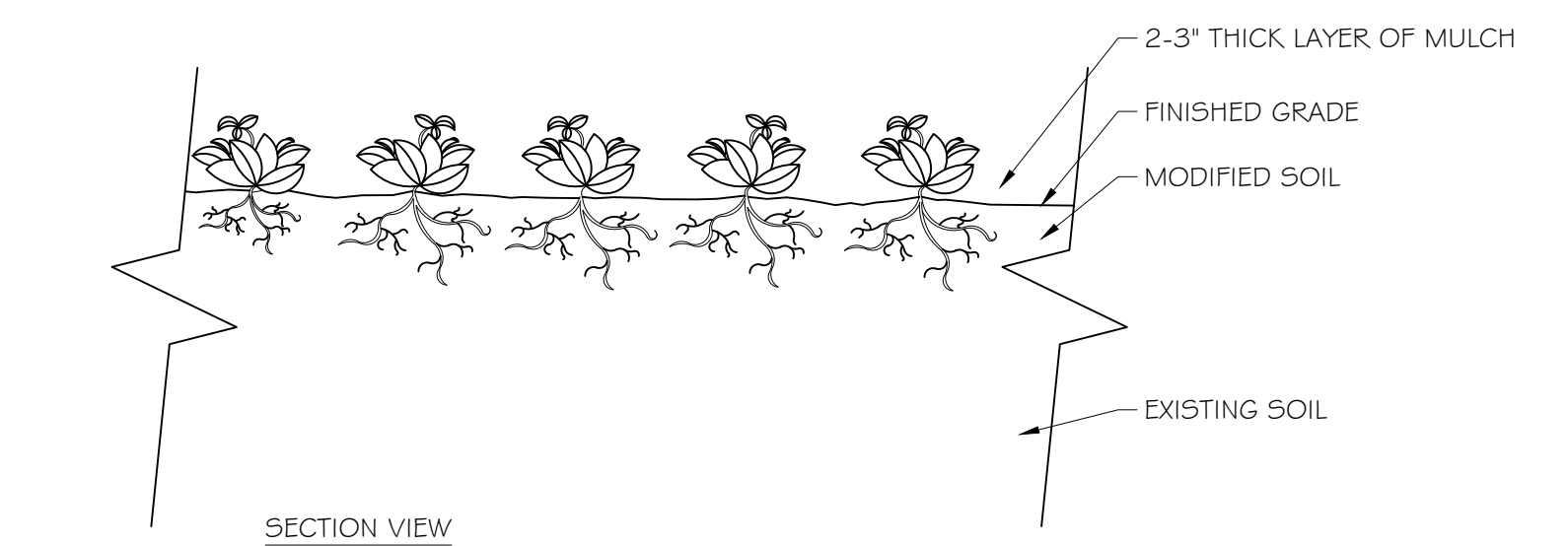


**2 SHRUB PLANTING DETAIL** 3/4" = 1'-0"

NOTES:  
 1. SHRUB SHALL BE OF QUALITY PRESCRIBED IN THE ROOT OBSERVATIONS DETAIL AND SPECIFICATIONS  
 2. SEE SPECIFICATIONS FOR FURTHER REQUIREMENTS RELATED TO THIS DETAIL.

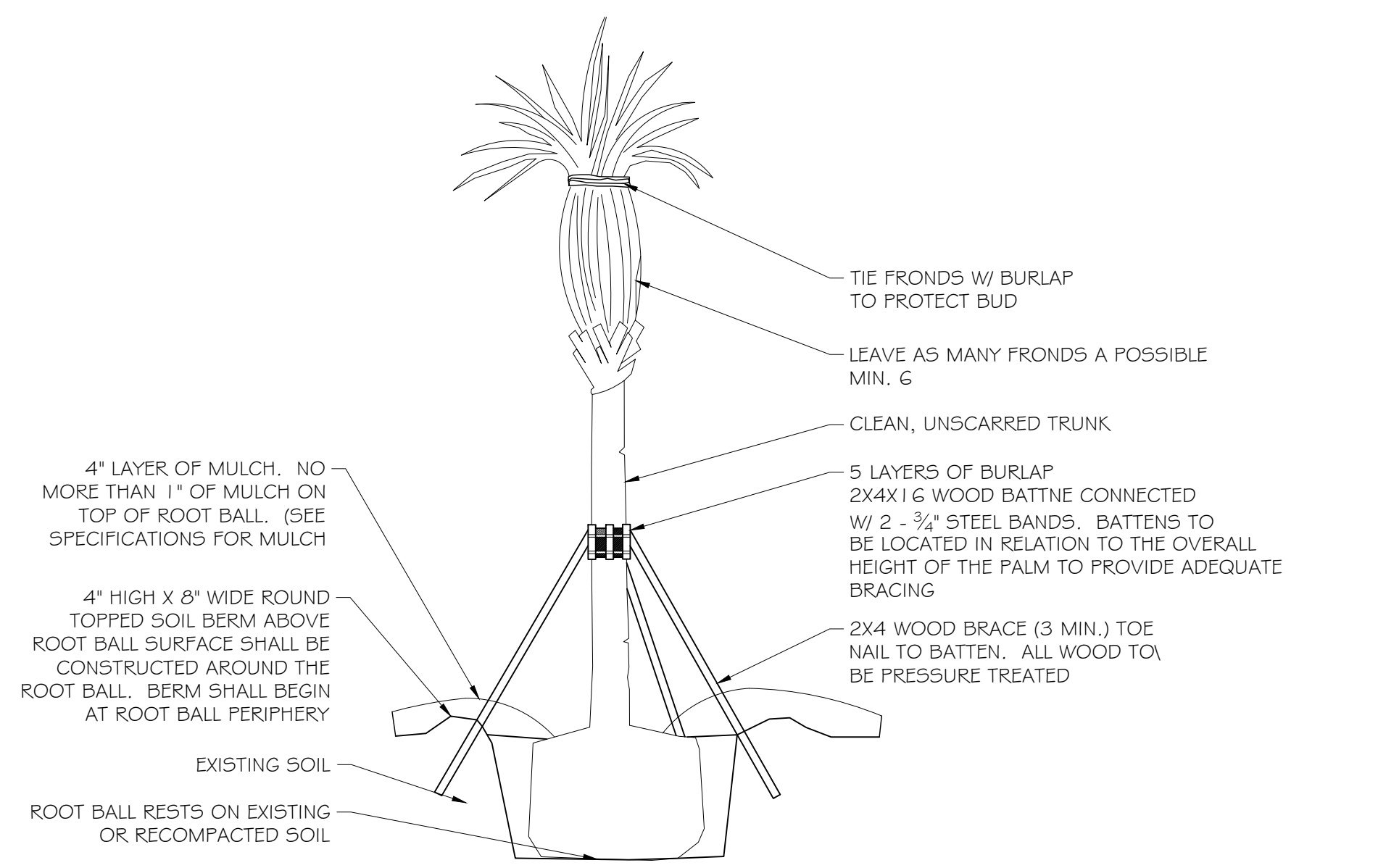


**5 TREE STAKING DETAIL** 1/2" = 1'-0"



**3 GROUNDCOVER** 3/4" = 1'-0"

NOTES:  
 1 - SEE PLANTING LEGEND FOR GROUNDCOVER SPECIES, SIZE, AND SPACING DIMENSION.  
 2 - SMALL ROOTS (1/2" OR LESS) THAT GROW AROUND, UP, OR DOWN THE ROOT BALL PERIPHERY ARE CONSIDERED A NORMAL CONDITION IN CONTAINER PRODUCTION AND ARE ACCEPTABLE HOWEVER THEY SHOULD BE ELIMINATED AT THE TIME OF PLANTING. ROOTS ON THE PERIPHERY CAN BE REMOVED AT THE TIME OF PLANTING.  
 3 - SETTLE SOIL AROUND ROOT BALL OF EACH GROUNDCOVER PRIOR TO MULCHING.



**6 PALM STAKING DETAIL** SCALE : 1/4" = 1'-0"

**LANDSCAPE NOTES:**

- ALL PLANTS TO BE FLORIDA #1 QUALITY OR BETTER AS DEFINED IN THE LATEST EDITION OF THE FLORIDA GRADES AND STANDARDS FOR NURSEY PLANTS, UNLESS OTHERWISE NOTED.
- ALL PLANTING AND SOD AREAS SHALL RECEIVE 100% IRRIGATION COVERAGE FROM AN AUTOMATIC IRRIGATION SYSTEM WITH A RAIN SENSOR.
- ALL PLANTING BEDS/ ISLANDS SHALL BE FREE OF SHELLROCK, CONSTRUCTION DEBRIS, OR OTHER MISCELLANEOUS DEBRIS, EXCAVATED TO A DEPTH OF 30" OR TO CLEAN NATIVE SOILS, AND BACKFILLED WITH THE SPECIFIED SOIL MIXTURE.
- ROOT BARRIERS ARE REQUIRED FOR ALL TREES LOCATED WITHIN 10' OF UNDERGROUND UTILITIES.
- CONTRACTOR IS RESPONSIBLE FOR OBTAINING ALL REQUIRED APPROVALS AND PERMITS FROM LOCAL MUNICIPALITY AND GOVERNING AGENCIES PRIOR TO REMOVAL OF ANY EXISTING VEGETATION OR BEGINNING INSTALLATION.
- IN THE EVENT OF A CONFLICT BETWEEN THE QUANTITIES SHOWN IN THE PLANT SCHEDULE AND GRAPHICALLY DEPICTED AND LABELED ON THE PLAN, THE PLAN WILL PREVAIL. IF SUCH CONFLICT IS DISCOVERED, CONTRACTOR SHALL CONSULT WITH LANDSCAPE ARCHITECT.
- ALL TREES PLANTED UNDER OR NEAR OVERHEAD POWER LINES SHALL COMPLY WITH FPL RIGHT TREE, RIGHT PLACE REQUIREMENTS.
- CONTRACTOR IS REQUIRED TO CALL SUNSHINE 811 TO HAVE ALL UNDERGROUND UTILITIES LOCATED PRIOR TO ANY DIGGING, EXCAVATION, OR UNDERGROUND WORK. IF PROPOSED DESIGN CONFLICTS WITH EXISTING OR PROPOSED UTILITY LOCATIONS, CONTRACTOR SHALL IMMEDIATELY CONTACT LANDSCAPE ARCHITECT TO DEVELOP A SOLUTION FOR THE CONFLICT.

Consultants:

Revisions:  
 7/29/22 - Comments  
 10/12/22 - Comments

**RESIDENCES AT LAKE WORTH**  
 Lake Worth, Florida  
 Richman Group Development

ALWAYS CALL 811 TWO FULL BUSINESS DAYS BEFORE YOU DIG TO HAVE UNDERGROUND UTILITIES LOCATED AND MARKED.

**Sunshine811.com**

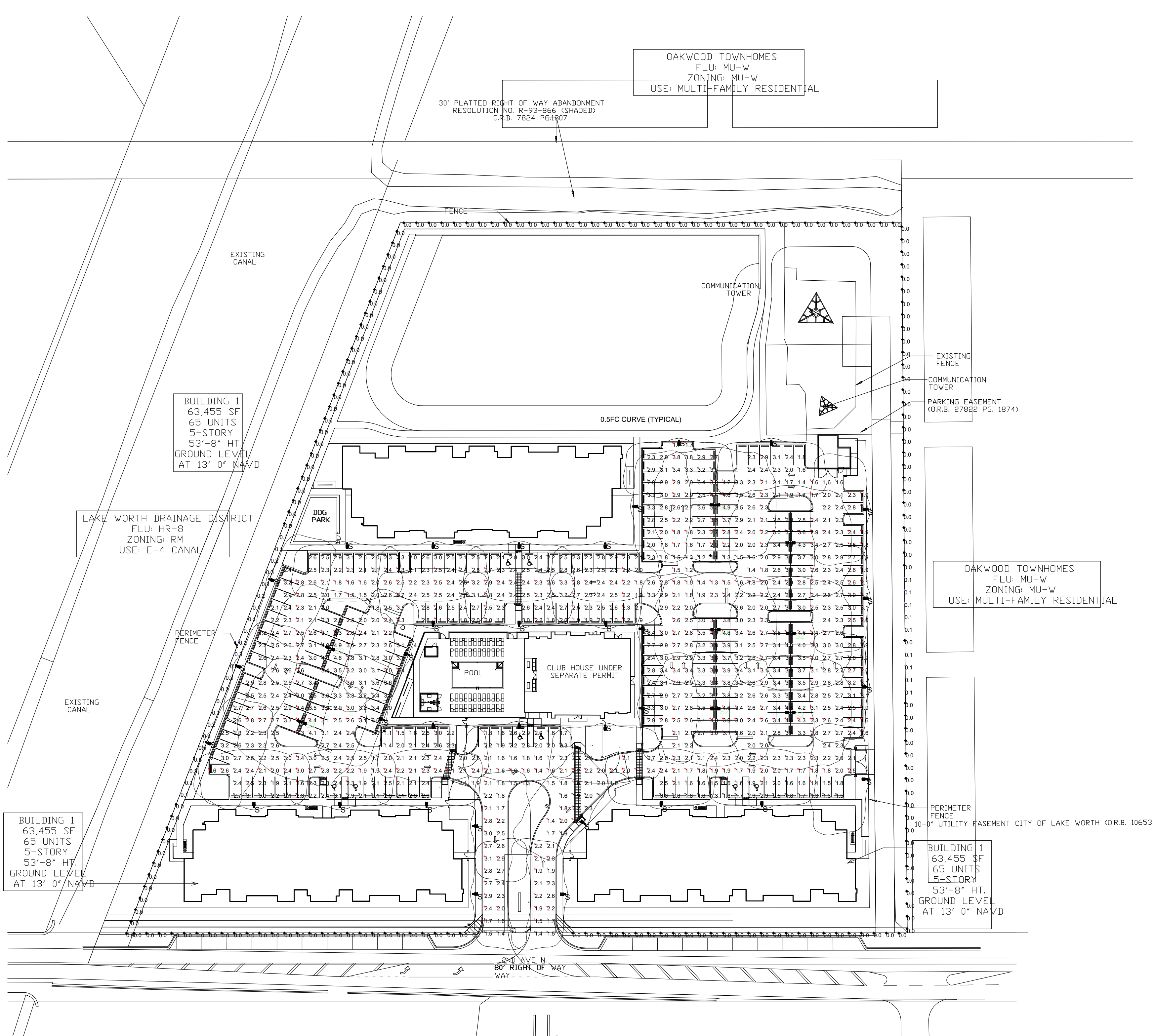
Drawn By: AC  
 Drawing #: 1264  
 Date: 04/11/2022

LANDSCAPE DETAILS

SHEET # LP.5







Plan View  
Scale 1" = 50'

**LUMINAIRE SCHEDULE**

Symbol	Label	Qty	Catalog Number	Description	Lamp	File	Lumens	LLF	Watts
	S	33	NLS LIGHTING NV-1-T4-48L-7-30K-UNV-HSS ON RTA DIRECT BURIAL POLE 20' AFG	SINGLE LED LUMINAIRE WITH HOUSE-SIDE SHIELD ON 20' AFG RTA POLE	WHT LED ARRAY, 30K, 80 CRI	NV-1-T4-48L-7-30K-HSS-IES	Absolute	0.85	104
	S2	8	NLS LIGHTING NV-1-T4-32L-7-30K-UNV ON RTA DIRECT BURIAL POLE 20' AFG	DOUBLE LED LUMINAIRE ON 20' AFG RTA POLE	WHT LED ARRAY, 30K, 80 CRI	NV-1-T4-32L-7-30K-IES	Absolute	0.85	142

**STATISTICS**

Description	Symbol	Avg	Max	Min	Max/Min
PARKING AREA (Z=0')	+	2.5 fc	5.2 fc	1.1 fc	4.7:1
PROPERTY LINE (Z=0')	+	0.0 fc	0.5 fc	0.0 fc	N/A

**LUMINAIRE LOCATIONS**

No.	Label	X	Y	Z	MH	Orientation	Tilt
1	S	366.2	134.2	20.0	20.0	180.0	0.0
2	S	434.7	134.2	20.0	20.0	180.0	0.0
3	S	503.2	134.2	20.0	20.0	180.0	0.0
4	S	572.0	134.2	20.0	20.0	180.0	0.0
5	S	572.4	68.4	20.0	20.0	0.0	0.0
6	S	503.2	68.5	20.0	20.0	0.0	0.0
7	S	434.7	68.6	20.0	20.0	0.0	0.0
8	S	781.3	161.4	20.0	20.0	-90.0	0.0
9	S	781.3	90.4	20.0	20.0	-90.0	0.0
10	S	780.8	19.9	20.0	20.0	-90.0	0.0
11	S	780.5	-53.7	20.0	20.0	-90.0	0.0
12	S	594.2	163.7	20.0	20.0	90.0	0.0
13	S	599.3	66.2	20.0	20.0	90.0	0.0
14	S	429.5	-76.0	20.0	20.0	0.0	0.0
15	S	360.3	-76.0	20.0	20.0	0.0	0.0
16	S	291.8	-76.0	20.0	20.0	0.0	0.0
17	S	696.9	-75.4	20.0	20.0	0.0	0.0
18	S	616.6	-75.4	20.0	20.0	0.0	0.0
19	S	466.5	-91.1	20.0	20.0	90.0	0.0
20	S	466.5	-145.3	20.0	20.0	90.0	0.0
21	S	540.0	-145.5	20.0	20.0	-90.0	0.0
22	S	555.5	-89.3	20.0	20.0	-53.6	0.0
23	S	253.8	-24.3	20.0	20.0	111.0	0.0
24	S	277.5	36.8	20.0	20.0	111.0	0.0
25	S	304.1	105.9	20.0	20.0	111.0	0.0
26	S	415.2	45.3	20.0	20.0	-72.4	0.0
27	S	395.3	-6.6	20.0	20.0	-72.4	0.0
28	S	599.3	2.8	20.0	20.0	90.0	0.0
29	S	704.4	216.1	20.0	20.0	180.0	0.0
30	S2	719.6	134.8	20.0	20.0	90.0	0.0
31	S2	352.7	50.7	20.0	20.0	-67.7	0.0
32	S2	330.0	-8.3	20.0	20.0	-67.7	0.0
33	S2	659.6	165.1	20.0	20.0	90.0	0.0
34	S2	719.6	-0.6	20.0	20.0	90.0	0.0
35	S2	719.9	82.4	20.0	20.0	90.0	0.0
36	S2	659.8	65.4	20.0	20.0	90.0	0.0
37	S2	659.8	2.4	20.0	20.0	90.0	0.0
38	S	434.7	-9.5	20.0	20.0	180.0	0.0
39	S	503.2	-9.5	20.0	20.0	180.0	0.0
40	S	572.0	-11.0	20.0	20.0	180.0	0.0
41	S	630.8	216.1	20.0	20.0	180.0	0.0

**NOTES**

- CALCULATIONS HAVE BEEN PERFORMED ACCORDING TO IES STANDARDS AND PRACTICE. SOME DIFFERENCES BETWEEN MEASURED VALUES AND CALCULATED RESULTS MAY OCCUR DUE TO TOLERANCES IN CALCULATION METHODS, TESTING PROCEDURES, COMPONENT PERFORMANCES, MEASURED CONDITIONS SUCH AS TECHNICAL AND FIELD VOLTAGES AND TEMPERATURE VARIATIONS. INPUT DATA SUCH AS ROOM DIMENSIONS, REFLECTANCES, FURNITURE, LIGHT LOSS FACTOR, FURNITURE, ARCHITECTURAL ELEMENTS AND FOLIAGE SIGNIFICANTLY AFFECT THE LIGHTING CALCULATIONS. IF THE REAL ENVIRONMENT DOES NOT MATCH INPUT DATA DIFFERENCES WILL OCCUR BETWEEN MEASURED AND CALCULATED VALUES.
- ALL POLES ARE TO BE 20' AFG WITHOUT TENON. LUMINAIRE ARE TO BE BOLTED TO SIDE OF POLES. ALL POLES TO BE (RTA) ROUND TAPERED ALUMINUM, DIRECT BURIAL AS MANUFACTURED BY HAPCO # RTA20D6BE.\*\*
- WIND LOAD CALCULATIONS, TO MEET SITE LOCATION LOAD REQUIREMENTS, MUST BE PREPARED AND SUBMITTED AS PART OF THE SUBMITTAL PROCESS. SAID CALCULATIONS MUST BE SIGNED AND SEALED BY FLORIDA REGISTERED ENGINEER.

**SEAL:**

Javier Font AR No. 12547

PROPOSED RESIDENTIAL DEVELOPMENT

**RESIDENCES AT LAKE WORTH**

2ND AVENUE NORTH  
LAKE WORTH, FLORIDA

© 2022 BEHAR FONT PARTNERS, P.A. THE DESIGN AND DRAWINGS FOR THIS PROJECT ARE PROPERTY OF THIS ARCHITECT AND ARE PROTECTED UNDER THE COPYRIGHT PROTECTION ACT.

DATE:  
10-12-2022

PROJECT NO:  
21-092

DRAWING NAME:  
SITE LIGHTING  
PHOTOMETRIC PLAN

SHEET NO:  
**A-0.1**