

Leisure Services



City of
Lake Worth
Beach
FLORIDA

The Art of Florida Living.SM



South Bryant Playground Replacement Project

Move to approve/disapprove the Purchase
Order with GameTime for the renovation of
the South Bryant Park playground



Background

The current South Bryant Park playground area has seven total pieces of equipment. The typical lifespan of playground equipment is 10-15 years due to environmental factors and usage. The two pieces of equipment which were installed in 2010 have heavy corrosion and will be replaced.

In FY2024 the City of Lake Worth Beach Commission approved a Capital Improvement Product for the renovation of South Bryant Park.

The City of Lake Worth Beach is utilizing a competitively solicited Omnia Partners / U.S. Communities Contract #201700113. City's Procurement Policy and Code authorizes the purchases of goods and services utilizing other governmental competitively procured Agreements.

Total cost not to exceed \$143,357.97

Deterioration of current equipment

Fig 4.1 Corrosion of play piece number 1



Fig 4.2 Corrosion of platform number 1





Current conditions of 2010 equipment broken slide removed for safety

Fig 5.1 Current condition of playground



Fig 5.2 Broken slide removed and boarded



Current conditions of 2010 see-saw

Fig 6.1 Current condition of see-saw



Fig 6.2 Broken see-saw apparatus removed





New equipment with incorporated shade canopy to be installed

Fig 7.1 New Structure front view



New Structure will have three slides in comparison to two slides.

Addition of a large shade canopy. (Ultimate Design wind speed of 132MPH for playgrounds with fabric removed from shade structure)



New equipment with incorporated shade structure to be installed

Fig 8.1 New Structure rear view

New Structure will include:

- River rock climber
- Wavy tree climber
- Bubble climber
- Sensory maze wheel, bongos, plus a fun seat
- Multi-platforms



New see-saw to be installed

Fig 9.1 New see-saw



New see-saw
will be
inclusive.

North structure and web climber will remain

Fig 10.1 Current North structure will remain



Fig 10.2 Current Web Climber will remain





Current equipment that will remain in place

Fig 11.1 Current train structure will remain



Fig 11.2 Current classic swings will remain



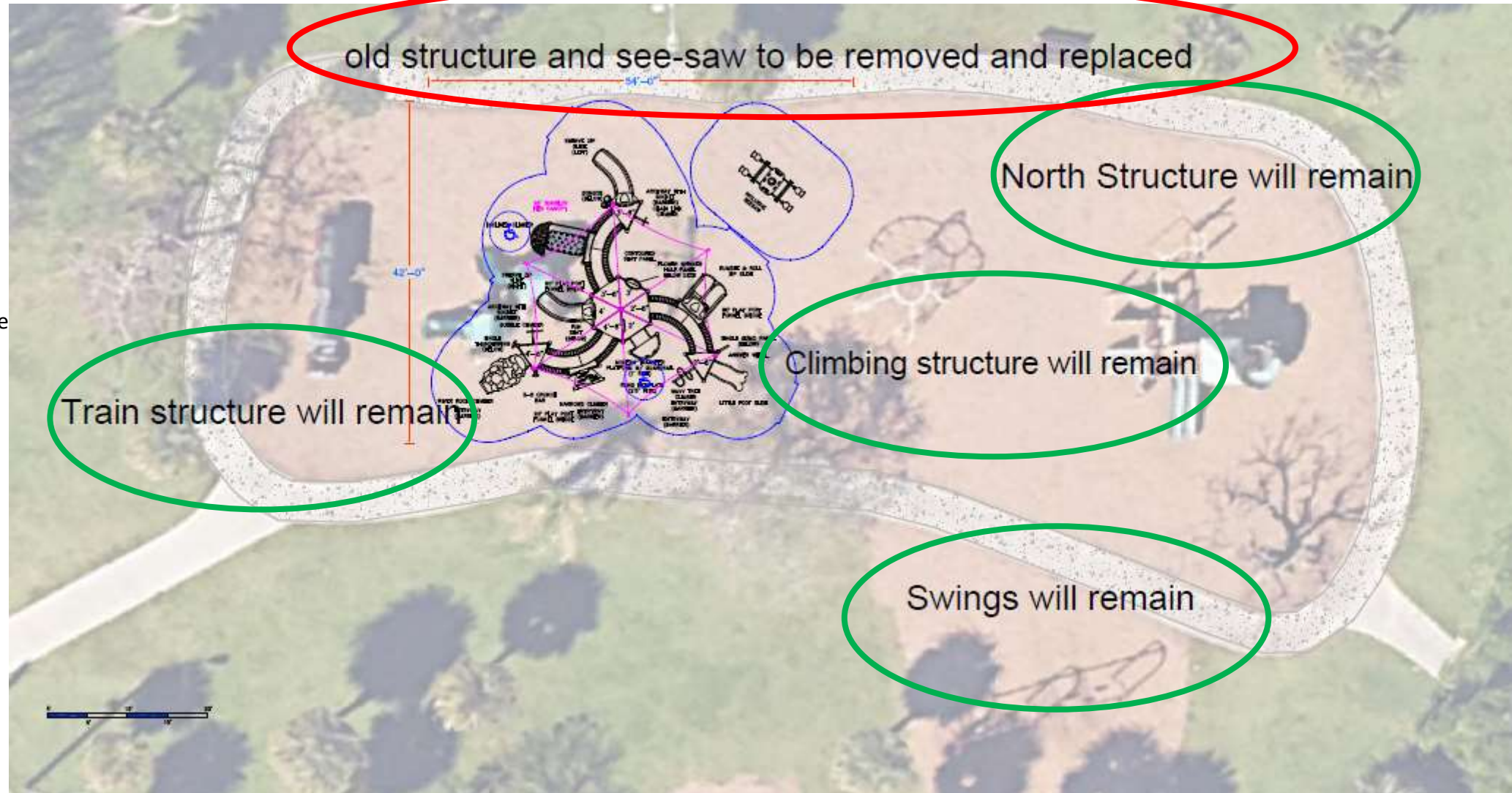
Fig 11.3 Current baby swings will remain





Overview of South Bryant Park playground area

1. New structure
2. New see-saw
3. North structure
4. Web climber
5. Classic swings
6. Baby swings
7. Train structure





Overview of South Bryant Park new structures

Following the Palm Beach County best practices, all their new playgrounds going forward will be designed to include a combination of shade structures and natural shade.

