

# Photometric Site Plan

Symbol	Qty	Label	Arrangement	Lumens	LF/F	Lum. Watts	(MANUFAC)	Description	BID Rating	Mounting
⊙	12	G1	Single	3874	0.300	28	EATON - MCGRAW-EDISON (FORMER COOPER LIGHTING)	TT-01-740-U-WQ	B2-00-G1	13
⊙	16	G2	Single	9413	0.300	74.7	EATON - MCGRAW-EDISON (FORMER COOPER LIGHTING)	TT-02-740-U-CQ	B3-00-G1	13
⊙	5	SA	Single	10181	0.300	108	COOPER LIGHTING SOLUTIONS - MCGRAW-EDISON (FORMERLY EATON)	GAM-SA1C-740-U-T4FT-HSS	B1-00-G2	20
⊙	2	SB	Single	5123	0.300	57	COOPER LIGHTING SOLUTIONS - MCGRAW-EDISON (FORMERLY EATON)	GAM-SA1C-740-U-T4FT-HSS	B1-00-G2	20
⊙	12	X	Single	2745	0.300	20.1	COOPER LIGHTING SOLUTIONS - MCGRAW-EDISON (FORMERLY EATON)	ISS-SAL1-740-U-SL3	B1-00-G1	10, 12

Label	CalcType	Units	Avg	Max	Min	Avg/Min	Max/Min
ADDED CALC	Illuminance	Ft	1.76	2.8	0.6	2.93	4.67
COMPSTER	Illuminance	Ft	0.48	0.9	0.1	4.80	9.00
NORTH GARAGE_Floor	Illuminance	Ft	10.00	36.1	1.2	8.33	30.08
PROPERTY LINE	Illuminance	Ft	0.32	1.0	0.0	N.A.	N.A.
SITE CALC	Illuminance	Ft	1.90	3.0	0.5	3.60	10.00
SOUTH GARAGE_Floor	Illuminance	Ft	9.42	30.1	1.1	8.56	31.91

**McGraw-Edison**  
GALN Galleon II  
Area / Site Luminaire

**Product Features**

- Interactive Menu
- Ordering Information
- Product Specifications
- Mounting Details
- Energy and Performance Data
- Control Options

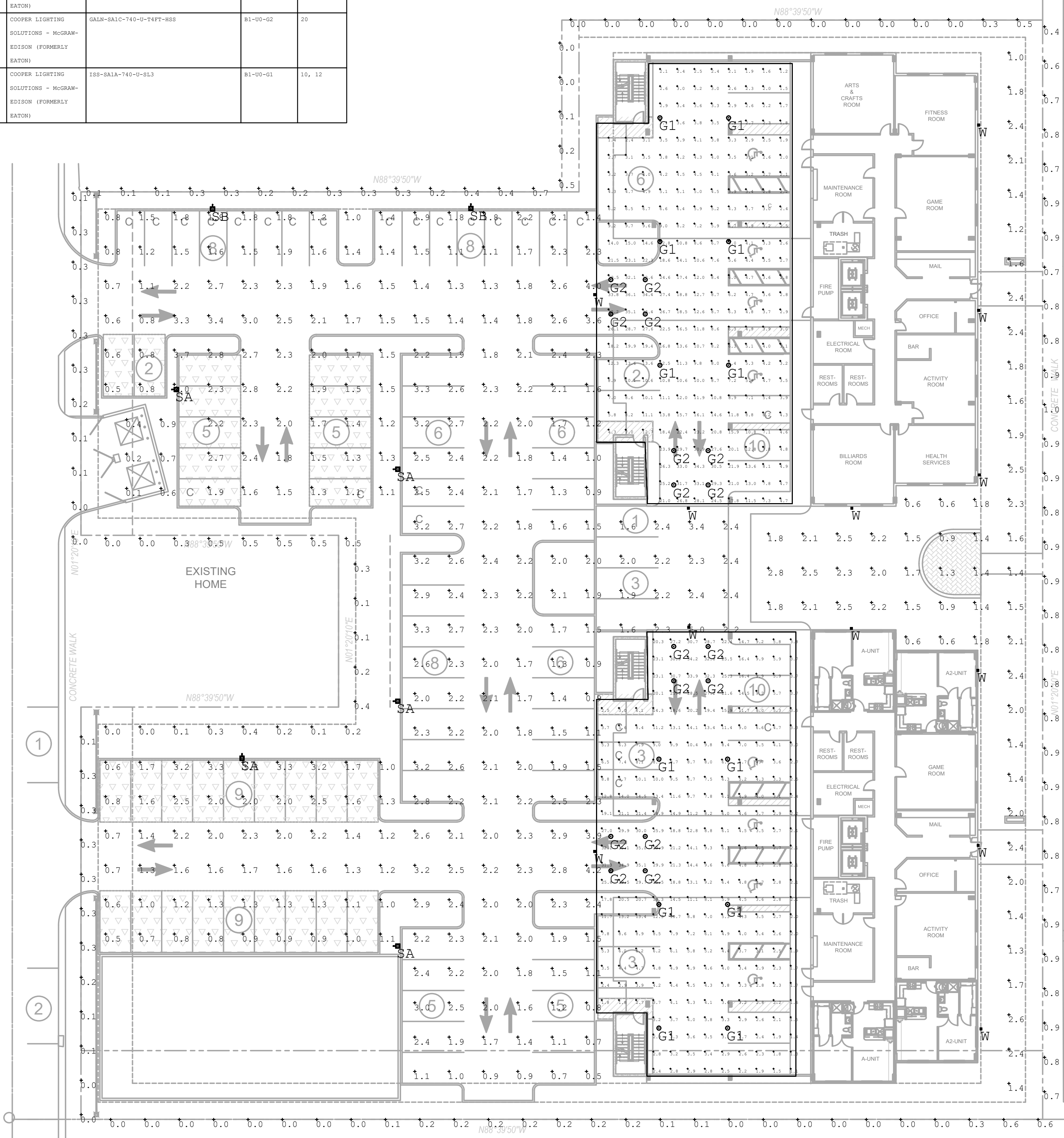
**Quick Facts**

- Lumen packages range from 3,500 - 73,500 (DIM - 502W)
- 18 optical distributions
- Efficiency up to 149 lumens per watt

**Dimensional Details**

**COOPER**

Ordering Information	Product Specifications	Mounting Details	Energy and Performance Data	Control Options
Ordering Information	Product Specifications	Mounting Details	Energy and Performance Data	Control Options
Ordering Information	Product Specifications	Mounting Details	Energy and Performance Data	Control Options
Ordering Information	Product Specifications	Mounting Details	Energy and Performance Data	Control Options
Ordering Information	Product Specifications	Mounting Details	Energy and Performance Data	Control Options



**McGraw-Edison**  
TT TopTier  
Parking Garage Luminaire

**Product Features**

- Interactive Menu
- Ordering Information
- Product Specifications
- Mounting Details
- Energy and Performance Data
- Control Options

**Quick Facts**

- Lumen packages range from 2,757 - 22,831
- Efficiency up to 149 lumens per watt
- 18 optical distributions
- Efficiency up to 149 lumens per watt

**Dimensional Details**

**COOPER**

Ordering Information	Product Specifications	Mounting Details	Energy and Performance Data	Control Options
Ordering Information	Product Specifications	Mounting Details	Energy and Performance Data	Control Options
Ordering Information	Product Specifications	Mounting Details	Energy and Performance Data	Control Options
Ordering Information	Product Specifications	Mounting Details	Energy and Performance Data	Control Options
Ordering Information	Product Specifications	Mounting Details	Energy and Performance Data	Control Options

**McGraw-Edison**  
Impact Elite LED  
Wall Mount Luminaire

**Product Features**

- Interactive Menu
- Ordering Information
- Product Specifications
- Mounting Details
- Energy and Performance Data
- Control Options

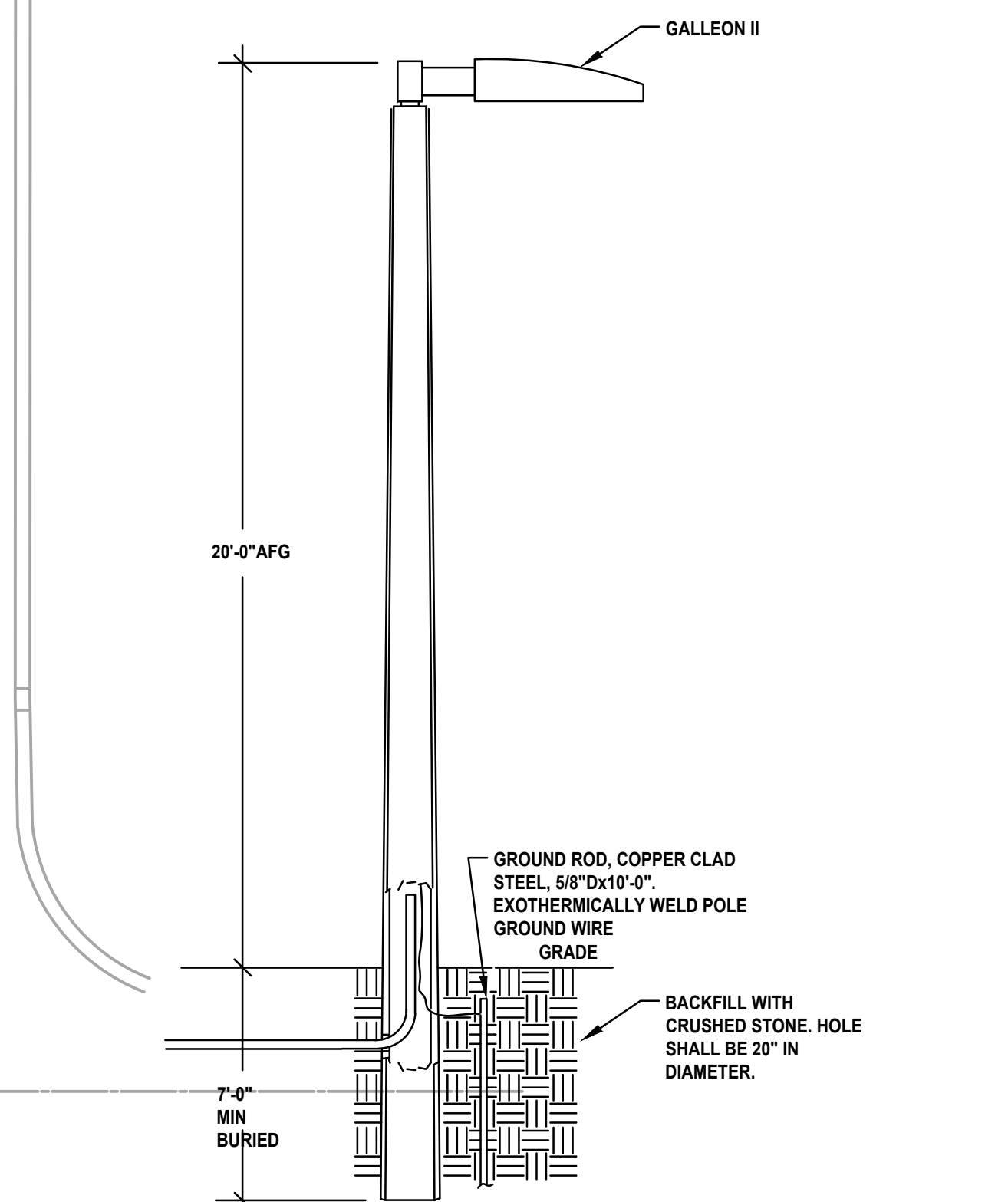
**Quick Facts**

- 18 optical distributions
- Lumen packages range from 2,469 to 11,480 (DIM - 180W)
- Efficiency up to 149 lumens per watt

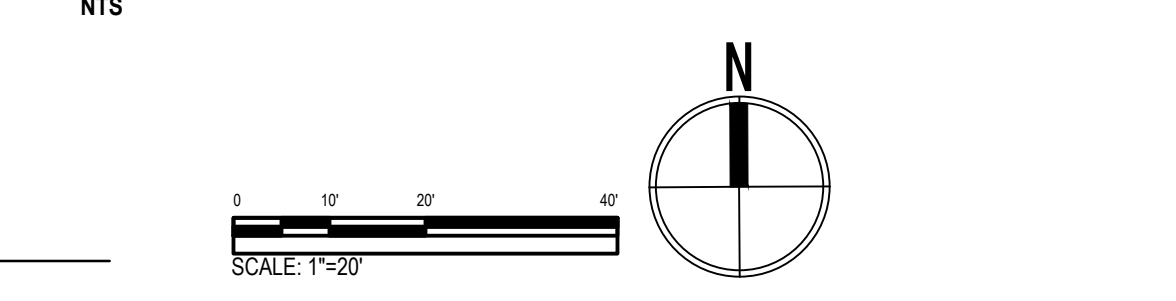
**Dimensional Details**

**COOPER**

Ordering Information	Product Specifications	Mounting Details	Energy and Performance Data	Control Options
Ordering Information	Product Specifications	Mounting Details	Energy and Performance Data	Control Options
Ordering Information	Product Specifications	Mounting Details	Energy and Performance Data	Control Options
Ordering Information	Product Specifications	Mounting Details	Energy and Performance Data	Control Options
Ordering Information	Product Specifications	Mounting Details	Energy and Performance Data	Control Options



**DIRECT BURIED POLE MOUNTED LIGHTING FIXTURE DETAIL**



No.	Revision/Issue	Date
	ISSUED FOR PERMIT	06-26-2023

**Madison Terrace Apartments**  
821 S DIXIE HWY, LAKE WORTH BEACH, FL 33460

CA# 26308

**INGENUITY ENGINEERS, INC.**  
"PROACTIVE ENGINEERING SOLUTIONS"  
6275 HAZELTINE NATIONAL DR. ORLANDO, FLORIDA | 407.398.6007

Drawn By: DRN  
Project: I23243.00  
Checked/Approved By: CHK

PHOTOMETRIC SITE PLAN

Jody McKenzie, PE  
PE No. 53253  
Sheet  
**E-010**