



Playpalette: Forester

10/8/24

Intellectual property of GameTime, a PlayCore Company. The site shown in rendering is an interpretation and may not reflect exact site conditions.

South Palm Park ~ Revision 2

City of Lake Worth Beach, FL



A PLAYCORE Company

www.gametime.com



www.playdrp.com



Playpalette: Forester

10/8/24

Intellectual property of GameTime, a PlayCore Company. The site shown in rendering is an interpretation and may not reflect exact site conditions.

South Palm Park ~ Revision 2

City of Lake Worth Beach, FL



A PLAYCORE Company

www.gametime.com



www.playdrp.com



Playpalette: Forester

10/8/24

Intellectual property of GameTime, a PlayCore Company. The site shown in rendering is an interpretation and may not reflect exact site conditions.

South Palm Park ~ Revision 2

City of Lake Worth Beach, FL



A PLAYCORE Company

www.gametime.com



www.playdrp.com



Playpalette: Forester

10/8/24
Intellectual property of GameTime, a PlayCore Company. The site shown in rendering is an interpretation and may not reflect exact site conditions.

South Palm Park ~ Revision 2

City of Lake Worth Beach, FL



A PLAYCORE Company

www.gametime.com



www.playdrp.com



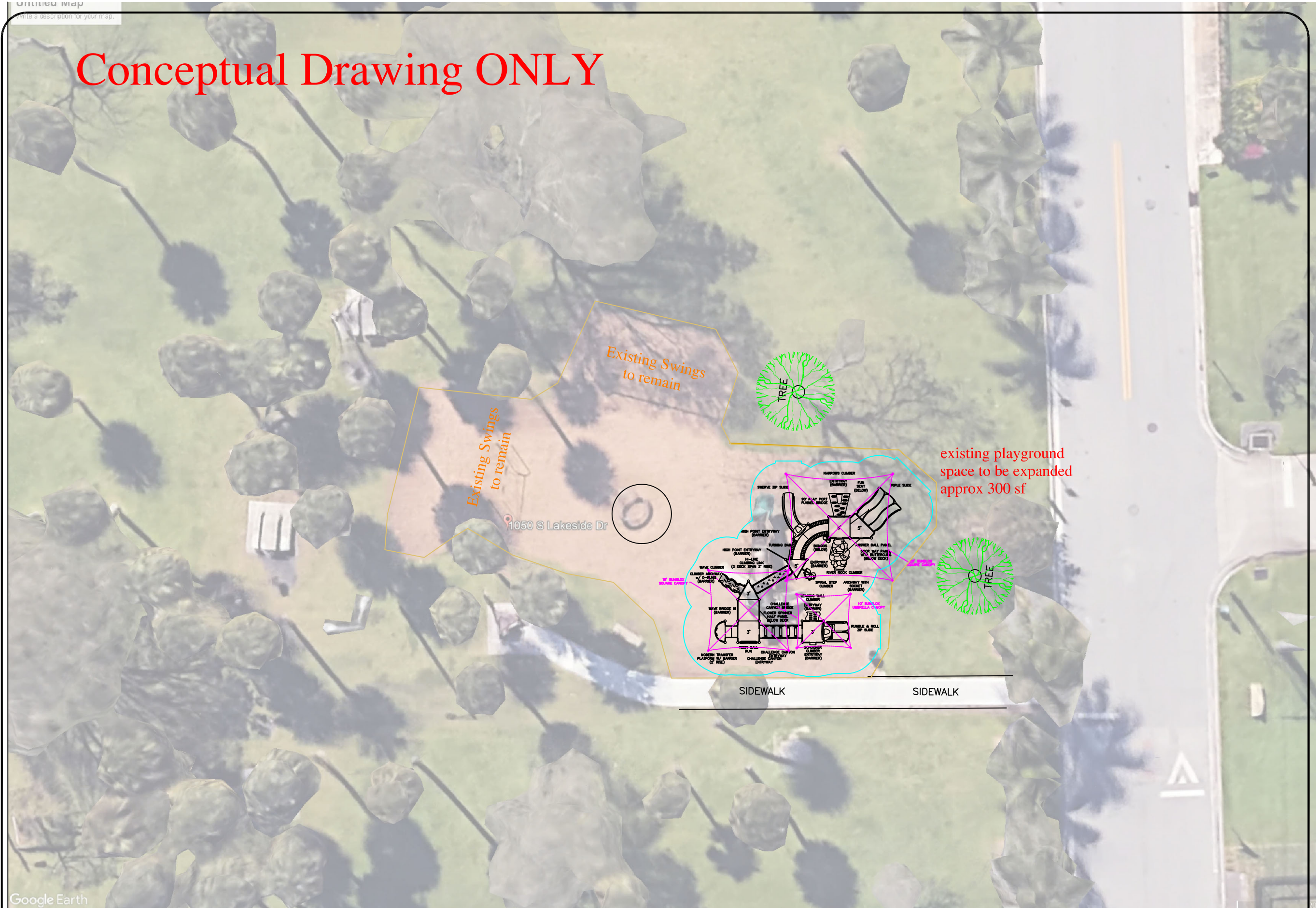
Playpalette: Forester

10/8/24
Intellectual property of GameTime, a PlayCore Company. The site shown in rendering is an interpretation and may not reflect exact site conditions.

South Palm Park ~ Revision 2

City of Lake Worth Beach, FL

Conceptual Drawing ONLY



Google Earth



150 PlayCore Drive SE
Fort Payne, AL 35967
www.gametime.com

South Palm Park ~ Revision 2
Lake Worth, FL
City of Lake Worth Beach
Representative
DRP

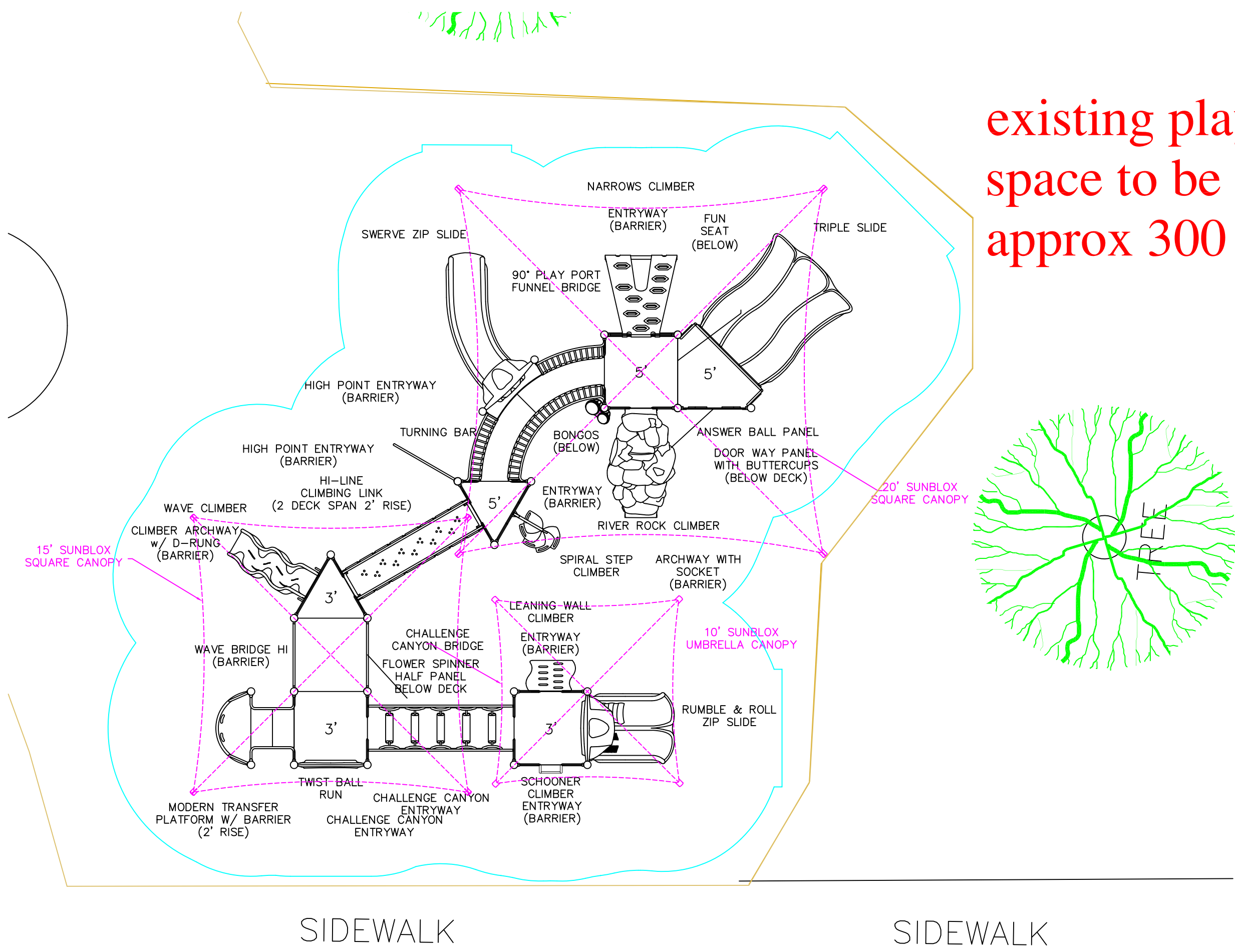
This play equipment is recommended for children ages 2-5

Minimum Area Required: see drawing
Scale: NTS
This drawing can be scaled only when in an 36" x 48" format

IMPORTANT: Soft resilient surfacing should be placed in the use zones of all equipment, as specified for each type of equipment, and at depths to meet the critical fall heights as specified by the U.S. consumer Product Safety Commission, ASTM standard F 1487 and Canadian Standard CAN/CSA-Z-614

Drawn By: gw
Date: 10/08/2024
Drawing Name: South Palm Park rev 2

existing playground
space to be expanded
approx 300 sf



SIDEWALK

SIDEWALK