

TASK ORDER NO. #16

SOUTH H STREET AT 6TH AVE S. UNDERGROUNDING

SURVEY SERVICES

THIS TASK ORDER ("Task Order") is made on _____, 2022, between the **City of Lake Worth Beach**, a Florida municipal corporation located at 7 North Dixie Highway, Lake Worth, Florida 33460 ("City") and **WGI, Inc.**, a Florida corporation ("Consultant").

1.0 Project Description:

The City desires the Consultant to provide those services as identified herein and generally described as generally described as a Design Survey for the proposed conversion to electrical undergrounding along South H Street and 8th Ave South (the "Project"). The Project is described in the consultant's proposal, dated August 8, 2022 and is attached hereto as "Exhibit 1" and incorporated herein.

2.0 Scope

Under this Task Order, the Consultant will provide professional services to the City as detailed in the Consultant's Proposal attached hereto and incorporated herein as "Exhibit 1".

3.0 Schedule

The services to be provided under this Task Order shall be completed within 240 working days from the City's approval of this Task Order or the issuance of a Notice to Proceed.

4.0 Compensation

This Task Order is issued for a lump sum amount of **\$60,800.00**. The attached proposal "Exhibit 1" identifies all costs and expenses anticipated in the time and expense, not to exceed amount.

5.0 Project Manager

The Project Manager for the Consultant is Jim Sullivan, PSM, phone: 561-839-1745; email: Jim.Sullivan@wginc.com; and the Project Manager for the City is Jean St Simon, phone: 561-586-1699; email: jssimon@lakeworthbeachfl.gov.

6.0 Progress Meetings

The Consultant shall schedule periodic progress review meetings with the City Project Manager as necessary but every 30 days as a minimum.

7.0 Authorization

This Task Order is issued in compliance with the Consultants' Competition Negotiation Act, section 287.055, Florida Statutes, and pursuant to the Agreement for Professional Services between the City of Lake Worth and the Consultant, entitled RFQ 18-303 dated March 6, 2018 ("Agreement" hereafter). If there are any conflicts between the terms and conditions of this Task Order and the Agreement, the terms and conditions of the Agreement shall prevail; however, the specific scope of services set forth in this Task Order shall take precedence over any other more general description of services.

INTENTIONALLY LEFT BLANK

IN WITNESS WHEREOF, the parties hereto have made and executed this Task Order to the Land Surveying Services Agreement on the day and year first above written.

CITY OF LAKE WORTH BEACH, FLORIDA

By: _____
Betty Resch, Mayor

ATTEST:

By: _____
Melissa Ann Coyne, CMC, City Clerk

APPROVED AS TO FORM AND
LEGAL SUFFICIENCY:

APPROVED FOR FINANCIAL
SUFFICIENCY

By: _____
Glen J. Torcivia, City Attorney

By: _____
Bruce T. Miller, Financial Services Director

CONTRACTOR:

WGI, Inc.



By: _____
Print Name: Jim Sullivan
Title: Geospatial Manager

STATE OF Florida
COUNTY OF Palm Beach

THE FOREGOING instrument was acknowledged before me by means of physical presence or online notarization on this 9th day of August, 2022, by Jim Sullivan, as the Geospatial Manager of WGI, Inc., a Florida Corporation authorized to do business in the State of Florida, who is personally known to me or who has produced _____ as identification, and who did take an oath that he or she is duly authorized to execute the foregoing instrument and bind the CONTRACTOR to the same.

Notary Public
CYNDY LITTLE
Notary Public
State of Florida
Comm# HH224313
Expires 3/31/2026

Notary Public Signature

EXHIBIT "1"
Contractors Proposal



EXHIBIT 1 (Consultant's Proposal)

August 8, 2022

Jean St Simon - Distribution Engineer
City of Lake Worth Beach
Electric Utilities Department
1900 2nd Ave., North
Lake Worth Beach, FL 33460

jssimon@lakeworthbeachfl.gov

Re: South H Street at 6th Ave S. Undergrounding

Dear Jean,

WGI, Inc. (WGI) is pleased to provide this proposal to City of Lake Worth Beach (CLIENT). Our scope of services and corresponding fees are detailed below. In addition, it is agreed that WGI's services will be performed pursuant to WGI's Contract Terms and Conditions, associated with the original contract between WGI and CLIENT, awarded as per RFQ 18-303 dated March 6, 2018.

SCOPE OF SERVICES

SURVEYING SERVICES

- | | |
|------------------------------|--------------------|
| I. Topographic Survey | \$14,550.00 |
|------------------------------|--------------------|
1. Survey services for 1,500 foot corridor to support design on proposed utility conversion from aerial to underground along South H Street from the 6th Ave S substation to 8th Ave S. shown below as "Survey Limits".
 2. Establish control sufficient enough to perform the necessary tasks. Establish a benchmark at both segments.
 3. Establish the existing right-of-way (R/W) throughout the Survey Limits as shown below by researching online publicly available records. Field locate found monumentation for R/W analysis. This will not constitute a boundary survey and property corners will not be set.
 4. Prepare a Topographic Survey of the topo limits as shown below and in accordance with Rule 5J-17, Florida Administrative Code, pursuant to Chapter 472.027 of the Florida Statutes.
 5. The survey will consist of general ground elevation shots and breaks in grade with intervals not to exceed 50 feet.
 6. The topographic limits are from right-of-way (R/W) to R/W as shown below except for features/topography within the railroad R/W.
 7. The Topographic Survey will include:
 - a. Visible and attainable fixed improvements and utilities unless otherwise noted;
 - b. Footprint of permanent structures;
 - c. Invert elevations of sanitary and storm drainage manholes, culverts, catch basins, and outfalls including pipe sizes and type if attainable. Inverts will not be measured in active traffic lanes. Traffic control, lane closures, off duty police are not included.
 - d. Inverts from their connecting structure if found and accessible.
 - e. Type and height of walls, fences;

- f. Overhead wires (horizontal location only);
 - g. Outline of areas of dense vegetation such as treelines, bushes, hedges, and shrubs not individually located;
 - h. Individual trees with 4 inches and larger caliper measured at breast height when not included within areas of dense vegetation; and
 - i. Outline of landscaped areas.
 - j. One benchmark established. Offsite placement preferred if accessible/allowable.
8. The Topographic Survey will not include:
- a. Sub-surface designation or location of underground utilities;
 - b. Sub-surface foundations of structures;
 - c. Storm and Sanitary Sewer inverts of recessed or debris filled structures;
 - d. Sprinkler heads;
 - e. Overhead clearances (signal heads, wires, bridges, roofs, overhangs, walkways, etc.);
 - f. Traffic pavement striping including parking spaces;
 - g. Tree tagging;
 - h. Location of Geotech borings; and
 - i. Temporary features such as a trailers, movable barriers/fences, solar lighting, etc.
9. Field verified R/W and/or property lines to be used as a base file on accompanying design plans. Not a Boundary Survey.
10. Deliverable will be a DTM, an AutoCAD file, and a signed and sealed plot of the Topographic Survey.

II. SUE Utility Designating (ASCE 38-02 Quality Level B)

\$8,750.00

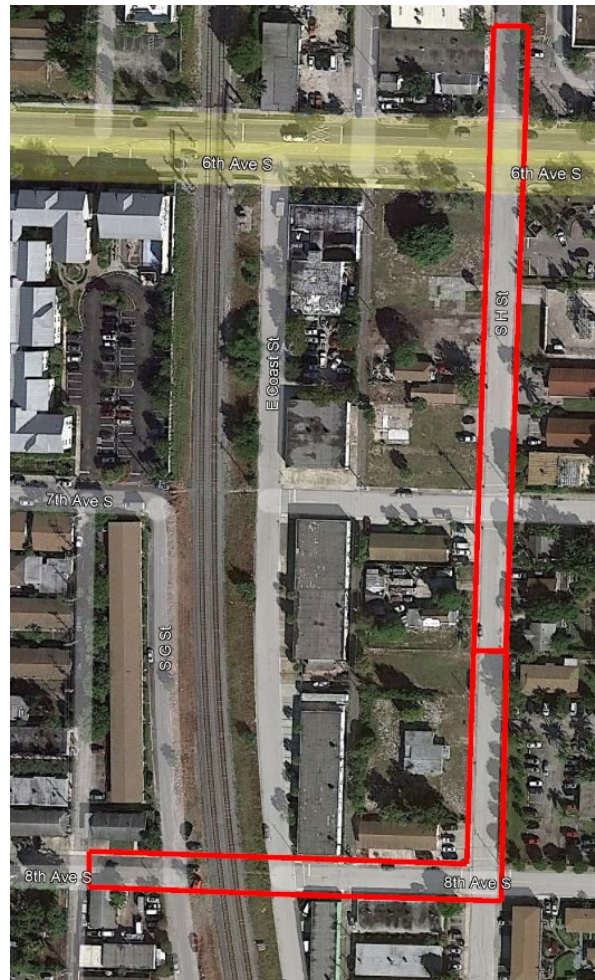
1. WGI to provide an ASCE 38-02 Quality Level B (QLB) utility investigation (designates) to depict existing utilities from ROW to ROW within the areas shown below as "Survey Limits" except for the railroad R/W. WGI will provide an ASCE 38-02 Quality Level B utility investigation (designates), in order to determine the horizontal location of existing utilities.
 - a. SUE Utility Designating includes:
 - i. Street lighting.
 - b. SUE Utility Designating does not include:
 - i. Irrigation;
 - ii. Storm and Sanitary; and
 - iii. Select backfill material, flowable fill or other material not included.
2. This QLB investigation includes direct induction of toneable subsurface utility facilities from surface accessible features, and Ground Penetrating Radar sweep for non-toneable facilities. Geophysical designating techniques, although highly reliable, are subject to outside interference, which are beyond the control of WGI, and may impede the effectiveness of subsurface utility investigations. Soil conditions, utility materials, size, depth, salt water and conductivity may prevent the location of some subsurface utilities. WGI utilizes state of the art equipment and methodology during all phases of utility investigations, but no guarantee is hereby expressed that all facilities will be detected.
3. WGI will perform survey and location of utility designates using network corrected GNSS surveying methods tied to project control.
4. Deliverable shall be an AutoCAD with the QLB investigations (utility designates) incorporated into the Topographic Survey drawing.

III. SUE Utility Test Holes (Level A)

\$37,500.00

1. ASCE Quality Level A (Utility Test Holes), per the guidelines established in ASCE 38-02, "Standard Guidelines for the Collection and Depiction of Existing Subsurface Utility Data."
 - a. Provide Utility Test Holes for **existing utilities crossing the proposed undergrounding corridor** as shown in the Survey Limits shown below.
 - b. This task includes up to 50 test holes.
 - c. Field Test Hole Inventory Data sheets with the obtainable data; location, digital photos, utility description, depth, size, type, direction, and material for each test hole;
2. Provide survey and location of utility test holes from existing control.
3. Additional facilities found during the course of QLA investigation will also be documented.
4. Generally, utility facilities found by vacuum excavation can be visually exposed to a depth equal to the water table; an air lance probe will be used for deeper facilities; however, visual confirmation will not be possible for facilities lying below the water table or utilities within directional bores. Note that the absence of identified utilities does not guarantee "no utility conflict"
5. Deliverable will be Field Test Hole Inventory Data sheets with the obtainable data; location, digital photos, utility description, depth, size, type, direction, and material for each test hole.

SURVEY LIMITS



BASIS OF THIS PROPOSAL

1. Access to the subject project shall be granted upon prior notice if restricted, gated, and/or locked. In the event that the surveyor is not allowed on site to perform the above survey services after access has been coordinated, the client shall be invoiced at the hourly rates quoted on WGI's current Fee Schedule.
2. Tree specimen nomenclature shall be generally common (oak, palm, pine, etc.) and cannot be relied upon. Consult with an arborist for further classification.
3. Geophysical designating techniques, although highly reliable, are subject to outside interference with are beyond the control of WGI, and may impede the effectiveness of subsurface utility investigations. Soil conditions, utility materials, size, depth, salt water and conductivity may prevent the location of some subsurface utilities. WGI utilizes state of the art equipment and methodology during all phases of utility investigations, but no guarantee is hereby expressed that all facilities will be detected.
4. Utility records research and the evaluation of is not included in this proposal.
5. Permits and permit fees, if needed, are not included and are the responsibility of the CLIENT.
6. Lane closures and police are not included to perform fieldwork.
7. The location of storm and sanitary structures are only verified at the manhole or catch basin structure. Additional underground mapping/locating of storm or sanitary pipes if any, will require a supplemental work order.
8. Meeting attendance is not included in these scope of services.
9. Horizontal and/or Vertical Datums specific to the Project shall be conveyed to WGI prior to the Notice to Proceed.

Total WGI Fee = \$60,800.00

Any additional optional services requested by CLIENT will be provided in accordance with WGI's current hourly fee schedule in effect at the time of service, or a fixed fee to be negotiated once a scope of service is defined.

We appreciate the opportunity to be of service to City of Lake Worth Beach. Upon acceptance of this proposal, please sign and return an executed copy to this office. Please note that the Contract Terms and Conditions are an integral part of this contract, are hereby incorporated by reference, and are controlling unless both parties expressly waive them in writing prior to commencement of work.

Respectfully submitted,
WGI, Inc.



Jim Sullivan, PSM
Geospatial Manager