

NOT FOR  
CONSTRUCTION

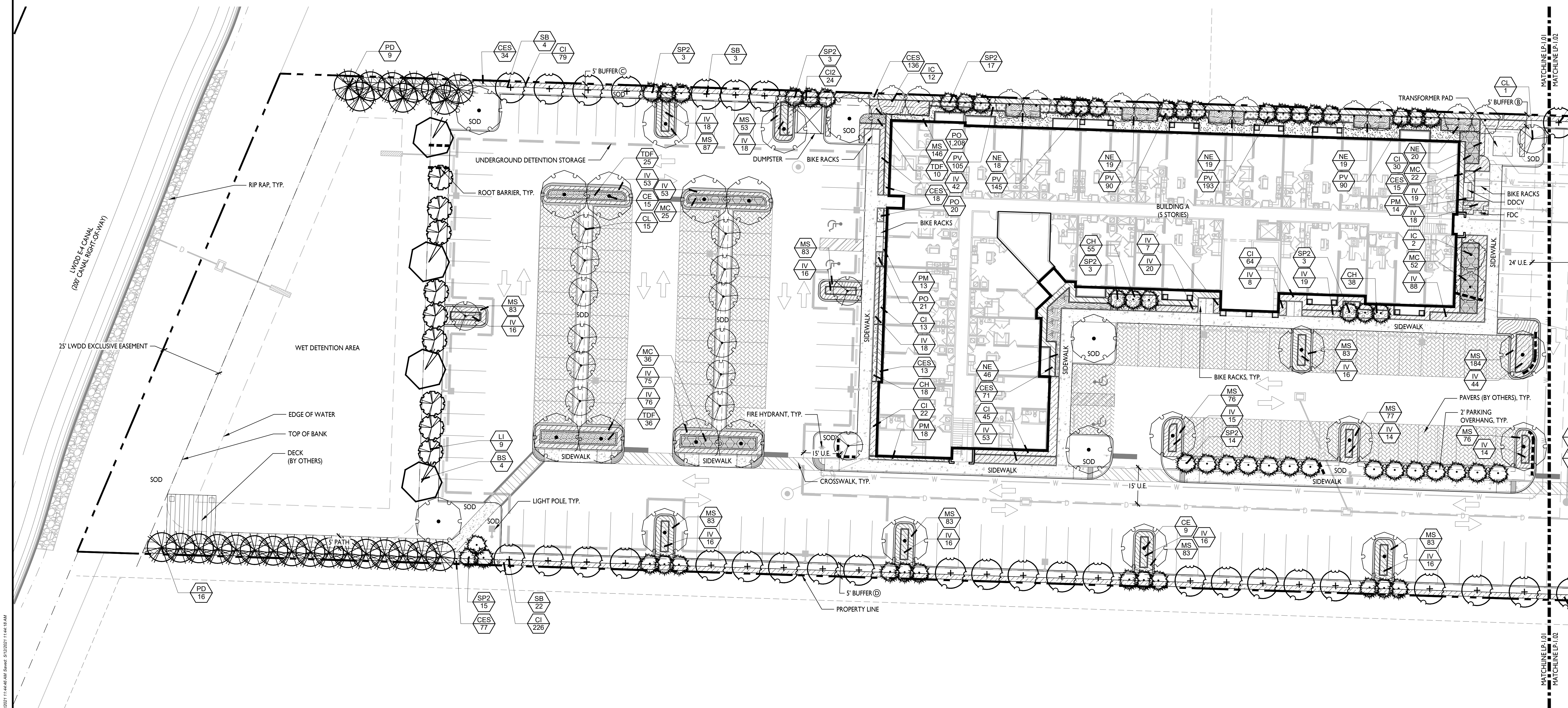
[illegible]

CAD	627301-LP.DWG
JOB NO.	6273.01
DRAWN BY	SW
CHECK BY	TM
DATE	12-28-2020

LANDSCAPE ARCHITECT OF RECORD  
TIFFANY DELYNN MAY, PLA  
FL# LA6667274

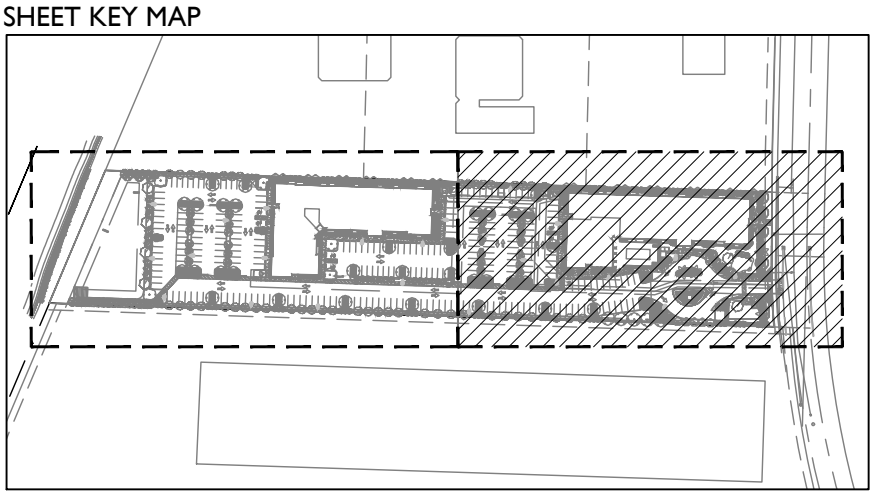
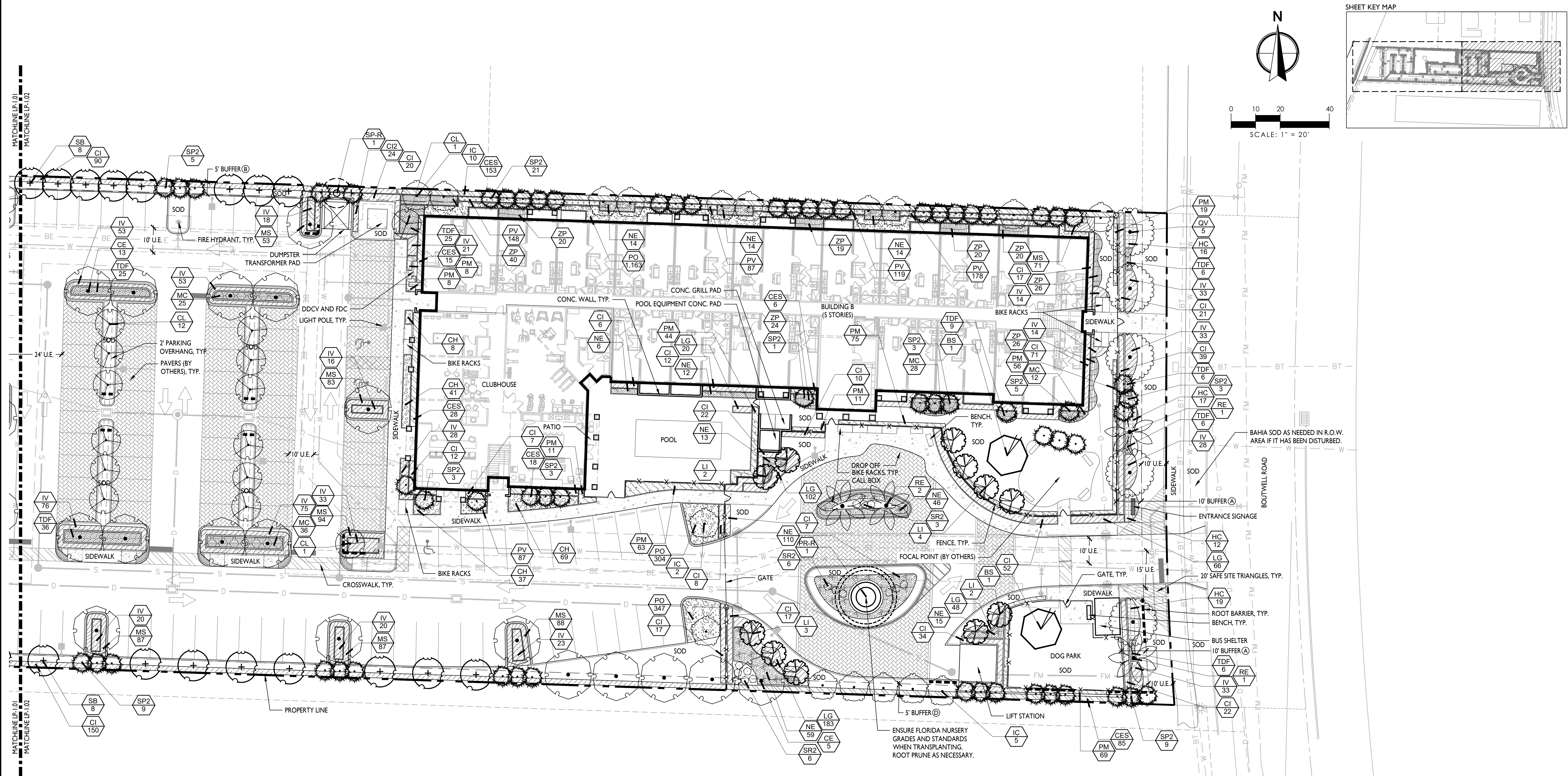
**THE BEXLY AT BOUTWELL**  
**3300 BOUTWELL ROAD**  
**LAKE WORTH BEACH**  
**LANDSCAPE PLAN**

SHEET:  
LP-1.01



Siyang Wen \\lwgj.com\data\Projects\62006273.01 3300 Boutwell Road MultiflA\Drawings\Landscape\627301-LP.dwg ---- Plotted: 5/12/2021 11:44:46 AM Saved: 5/12/2021 11:44:18 AM





2035 Vista Parkway, West Palm Beach, FL 33411  
Phone No. 866.909.2220    [www.wginc.com](http://www.wginc.com)  
Cert No. 6091 - LB No. 7055

[illegible]

LANDSCAPE ARCHITECT OF RECORD  
TIFFANY DELYNN MAY, PLA  
FL# LA6667274

SHEET:  
LP-1.02



<u>REES</u>	<u>QTY</u>	<u>COMMON NAME</u>	<u>BOTANICAL NAME</u>	<u>NATIVE</u>	<u>REMARKS</u>	<u>GROUND COVERS</u>	<u>QTY</u>	<u>COMMON NAME</u>	<u>BOTANICAL NAME</u>	<u>NATIVE</u>	<u>REMARKS</u>
BS	6	Gumbo Limbo	Bursera simaruba	YES	12' Ht. x 6' Sprd., 3" DBH.	LG	419	Evergreen Giant Liriope	Liriope muscari 'Evergreen Giant'	NO	12" Ht. x 12" Sprd., 12" O.C.
CL	30	Pitch Apple	Clusia rosea	YES	12' Ht. x 6' Sprd., 3" DBH.	MS	1,843	Sunshine Mimosa	Mimosa strigillosa	YES	6" Ht. x 8" Sprd., FLORIDA
CE	42	Green Buttonwood	Conocarpus erectus	YES	12' Ht. x 6' Sprd., 3" DBH						FANCY, FULL, LOW BRANCHED.
SB	46	Silver Buttonwood	Conocarpus erectus sericeus	YES	10' Ht. x 6' Sprd.						BLOOMING, 12" O.C.
LI	31	Dahoon Holly	Ilex cassine	YES	12' Ht. x 4' Sprd., 3" DBH.	PO	3,063	Florida Peperomia	Peperomia obtusifolia	YES	6" Ht. x 8" Sprd., 10" O.C.
LC	20	Crape Myrtle	Lagerstroemia indica	NO	8' Ht. x 4' Sprd.	PV	1,242	Variegated Baby Rubber Plant	Peperomia obtusifolia 'Variegata'	YES	6" Ht. x 8" Sprd., 10" O.C.
PQ	25	Slash Pine	Pinus elliotti densa	YES	10' Ht. x 5' Sprd.						
PD	5	Live Oak	Quercus virginiana	YES	12' Ht. x 6' Sprd., 3" DBH.						
<u>RELOCATED TREES</u>	<u>QTY</u>	<u>COMMON NAME</u>	<u>BOTANICAL NAME</u>	<u>NATIVE</u>	<u>REMARKS</u>						
PR-R	1	Senegal Date Palm	Phoenix reclinata	NO	Relocated Senegal Date Palm, Multi, Ensure Florida Nursery Grades and Standards when transplanting. Root prune as necessary						
SP-R	1	Cabbage Palmetto	Sabal palmetto	YES	Relocated Sabal Palm						
<u>PALM TREES</u>	<u>QTY</u>	<u>COMMON NAME</u>	<u>BOTANICAL NAME</u>	<u>NATIVE</u>	<u>REMARKS</u>						
RE	4	Florida Royal Palm	Roystonea elata	YES	18' GW, FLORIDA #1						
SP2	120	Cabbage Palmetto	Sabal palmetto	YES	12-18' C.T., Stagger Hts., Clean-cut						
<u>ACCENTS</u>	<u>QTY</u>	<u>COMMON NAME</u>	<u>BOTANICAL NAME</u>	<u>NATIVE</u>	<u>REMARKS</u>						
SR2	15	Orange Bird of Paradise	Strelitzia reginae	NO	36" Ht. x 36" Sprd.						
<u>SHRUB AREAS</u>	<u>QTY</u>	<u>COMMON NAME</u>	<u>BOTANICAL NAME</u>	<u>NATIVE</u>	<u>REMARKS</u>						
CI	1,113	Cocoplum	Chrysobalanus icaco	YES	24" Ht. x 24" Sprd., 24" O.C.						
CI2	48	Cocoplum	Chrysobalanus icaco	YES	4' Ht. x 24" Sprd., 24" O.C., FULL TO BASE						
CH	266	Horizontal Cocoplum	Chrysobalanus icaco 'horizontalis'	NO	18" Ht. x 18" Sprd., 18" O.C.						
CE	669	Silver Buttonwood	Conocarpus erectus sericeus	YES	24" Ht. x 24" Sprd., 24" O.C.						
HC	64	Dwarf Firebush	Hamelia patens 'Compacta'	NO	18" Ht. x 24" Sprd., 24" O.C.						
IV	1,375	Dwarf Schillings Holly	Ilex vomitoria 'Schillings Dwarf'	YES	18" Ht. x 18" Sprd., 18" O.C.						
MC	236	Pink Muhly Grass	Muhlenbergia capillaris	YES	24" Ht. x 18" Sprd., 24" O.C.						
NE	444	Boston Fern	Nephrolepis exaltata	YES	18" Ht. x 24" Sprd., 24" O.C.						
PM	409	Yew Pine	Podocarpus macrophyllus	NO	24" Ht. x 18" Sprd., 18" O.C.						
TDF	190	Dwarf Fakahatchee	Tripsacum floridana	YES	18" Ht. x 18" Sprd., 24" O.C.						
ZP	195	Cootie Cycad	Zamia pumila	YES	18" Ht. x 18" Sprd., 18" O.C.						

NATIVE SHRUBS/GROUNDCOVERS		
DESCRIPTION	QTY.	PERCENT
NATIVE SHRUB/GC VARIETIES	10,482	90%
NON-NATIVE SHRUB/GC VARIETIES	1,109	10%
TOTAL	11,591	100%

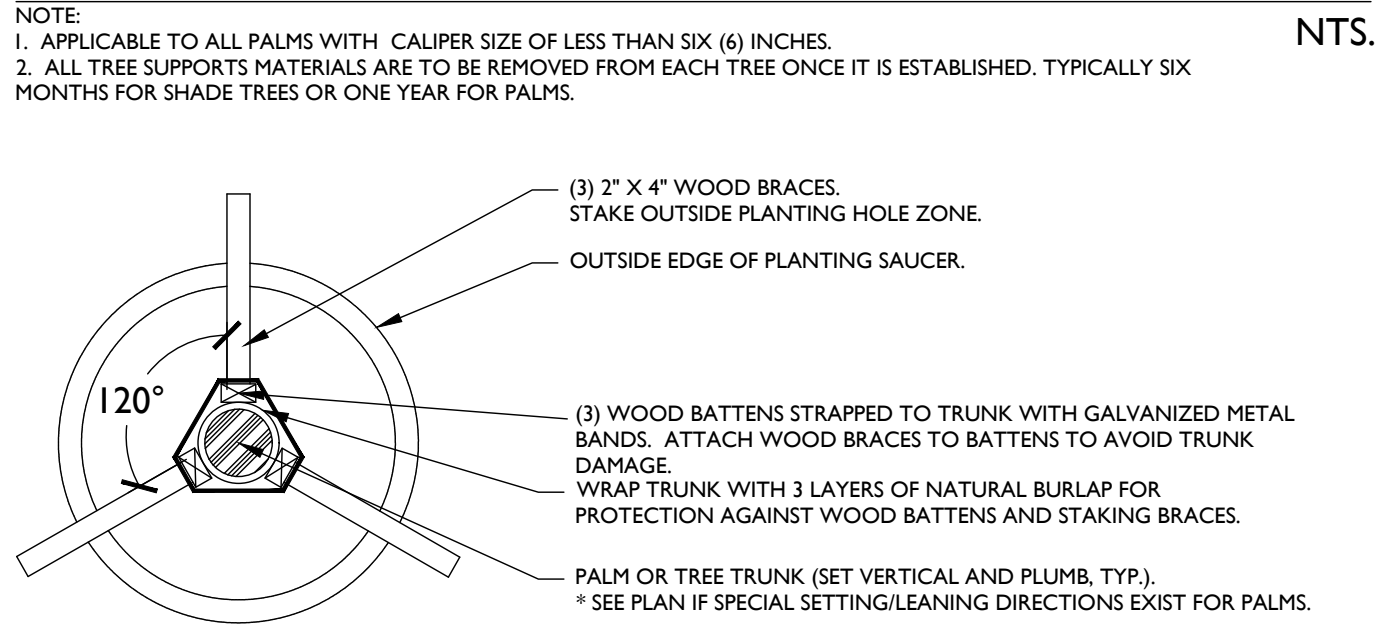
  

DROUGHT TOLERANT SHRUBS/GROUNDCOVERS		
DESCRIPTION	QTY.	PERCENT
DROUGHT TOLERANT VARIETIES	11,591	100%
NON-DROUGHT TOLERANT VARIETIES	0	0%
TOTAL	11,591	100%

Siyang Wen (wgcj.com\data/Projects/62006273.01 3300 Boutwell Road Multi/LA/Drawings/Landscape/627301-LP.dwg ---- Plotted: 5/12/2021 11:44:51 AM Saved: 5/12/2021 11:44:18 AM

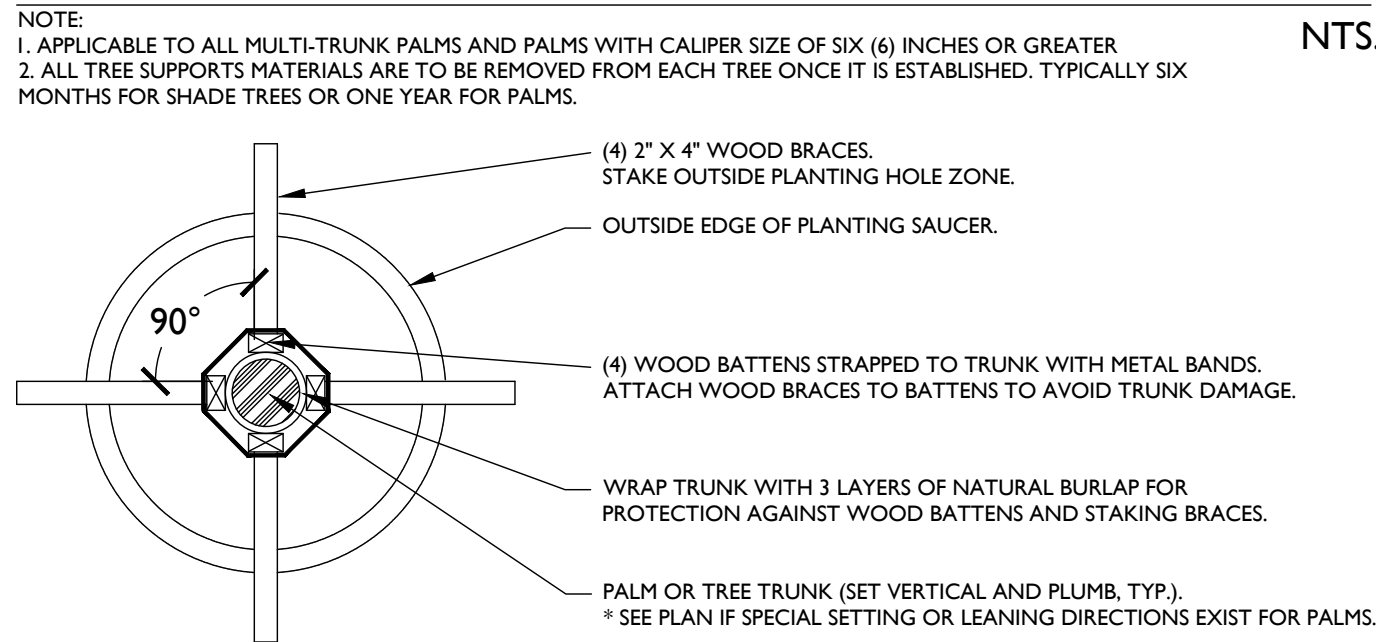


SMALL PALM STAKING PLAN



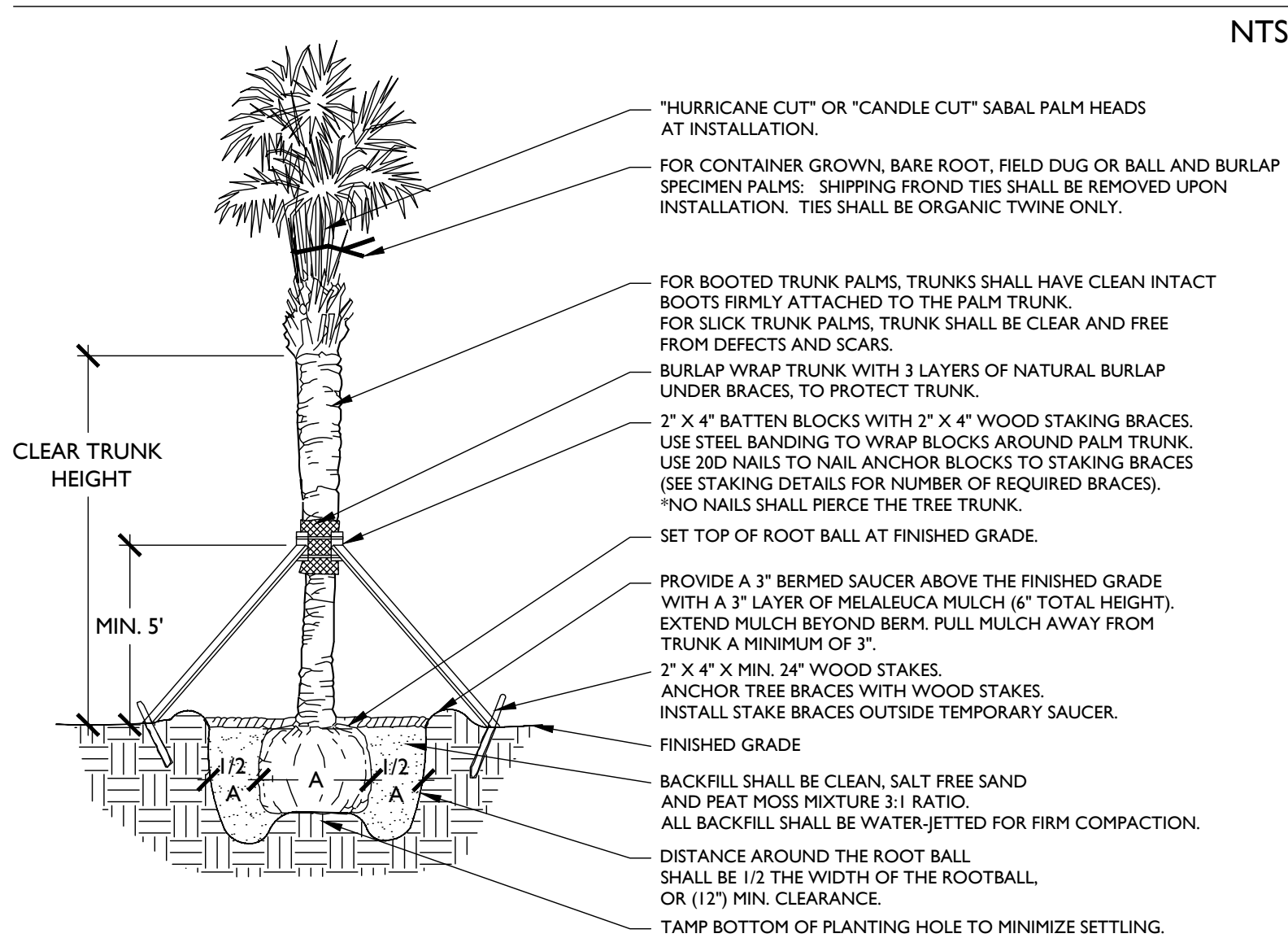
NTS.

LARGE PALM OR TREE STAKING PLAN

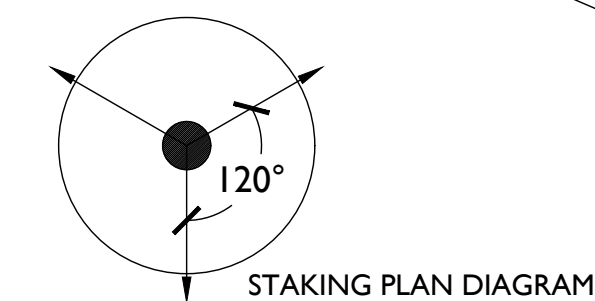
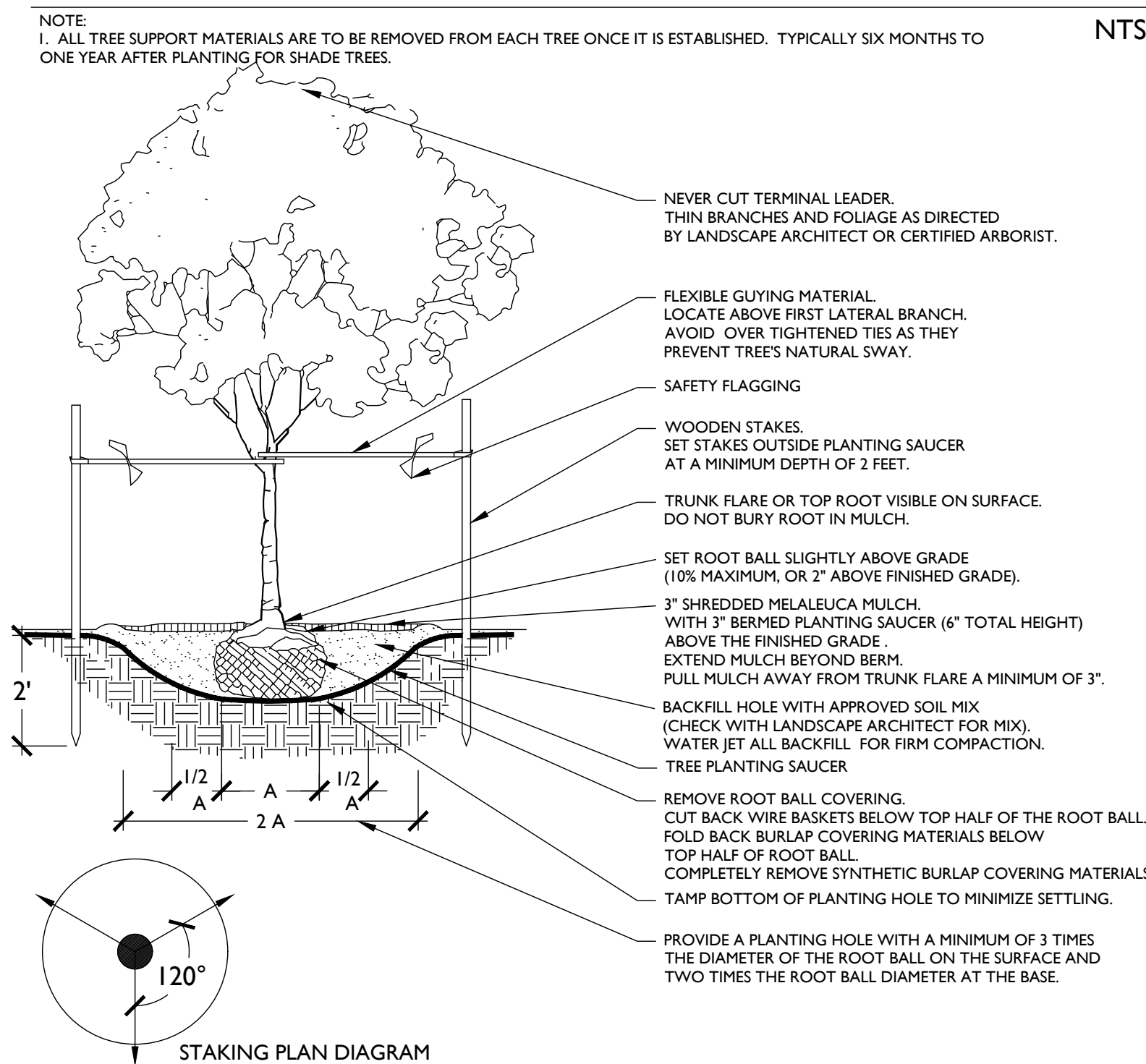


NTS.

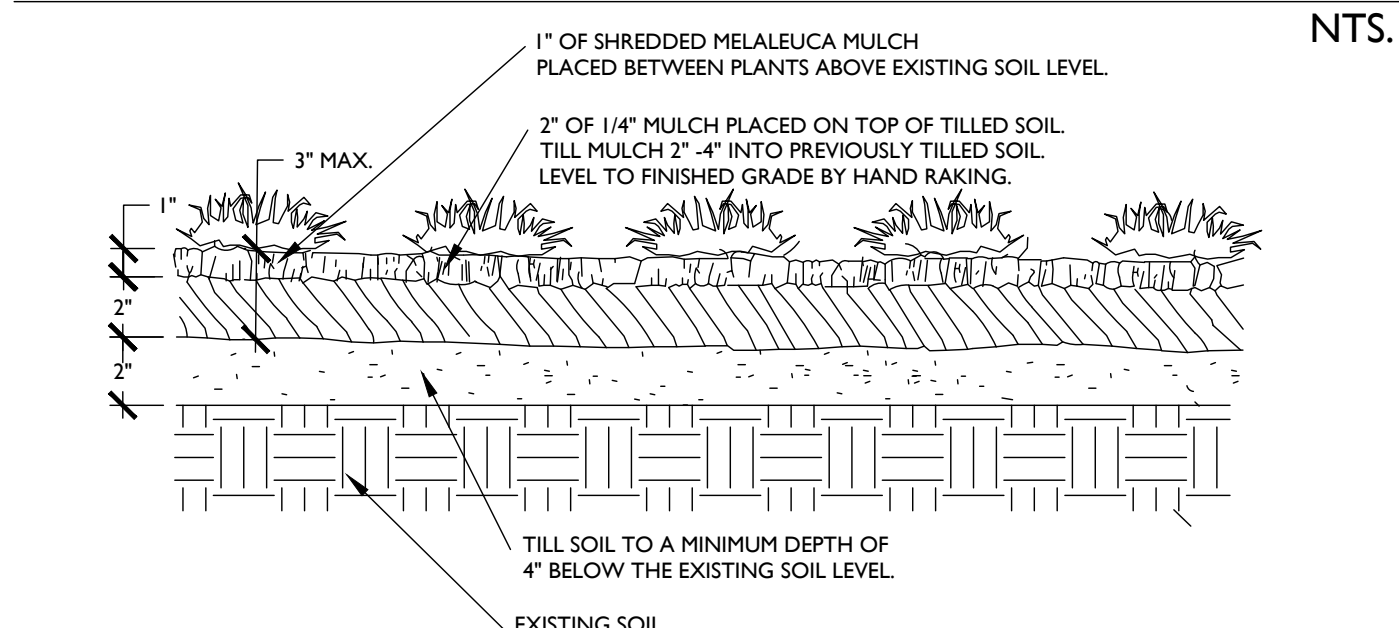
PALM PLANTING DETAIL



TREE PLANTING DETAIL

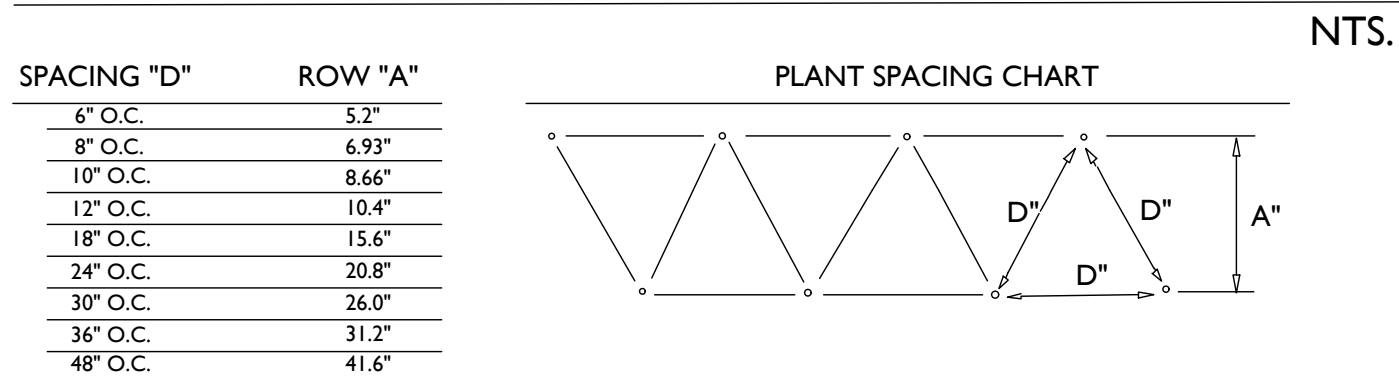


GROUND COVER DETAIL

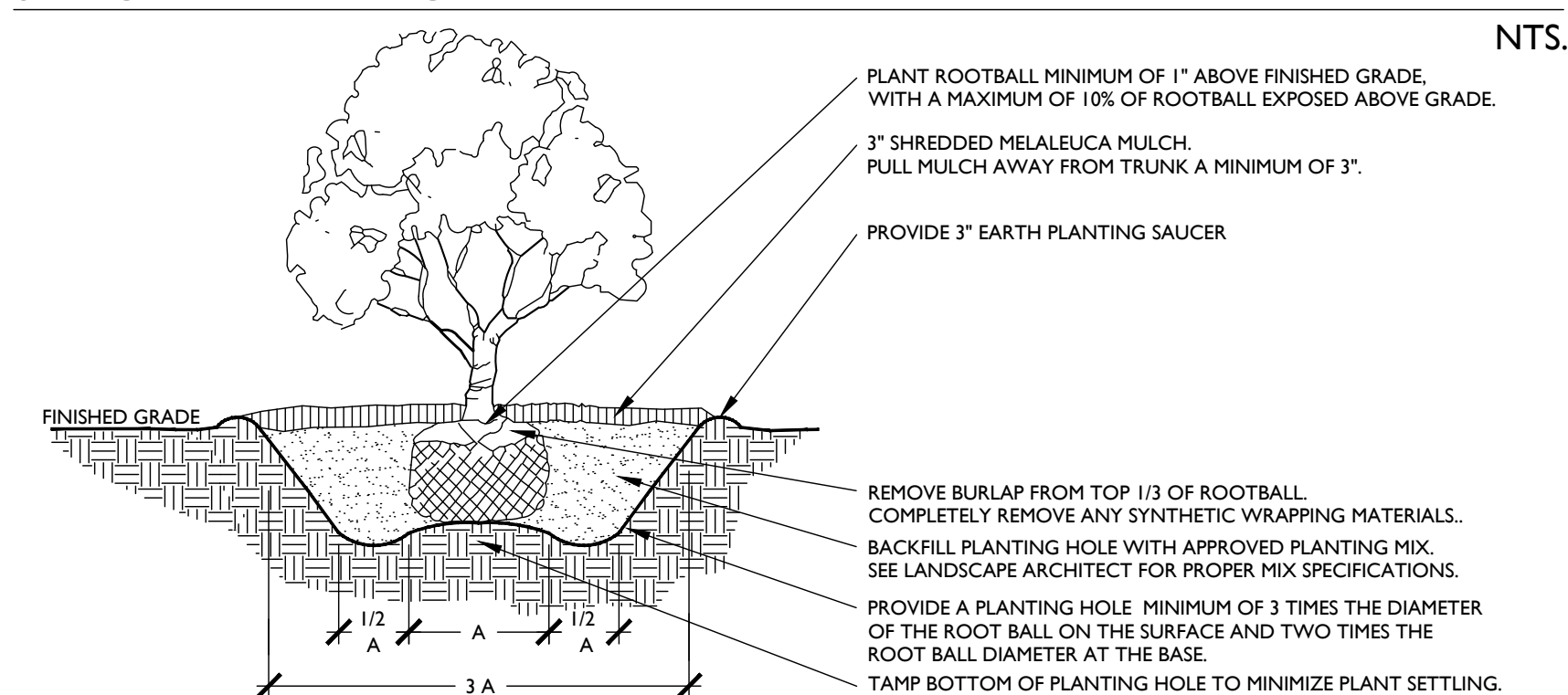


NTS.

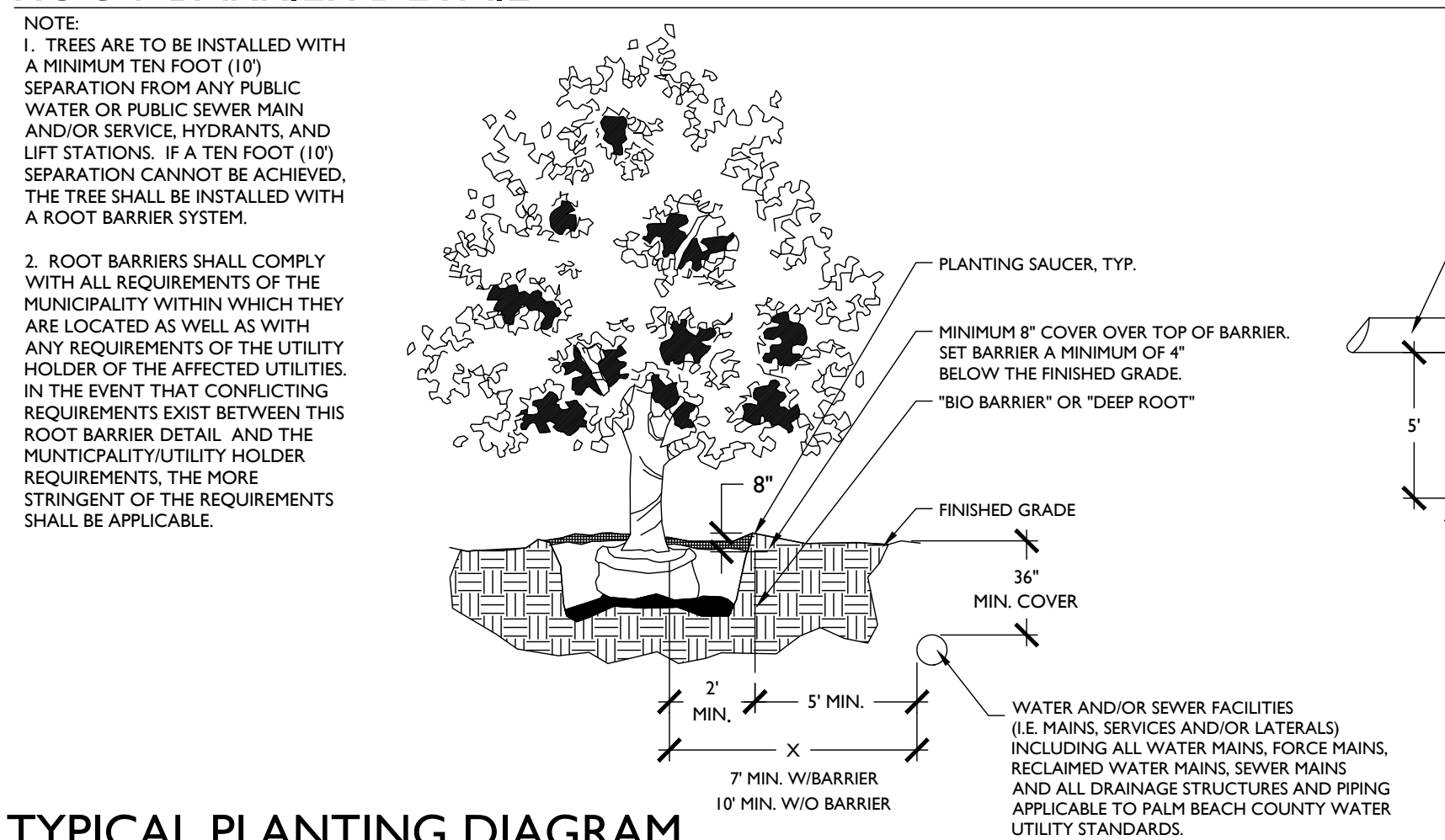
PLANT SPACING DETAIL



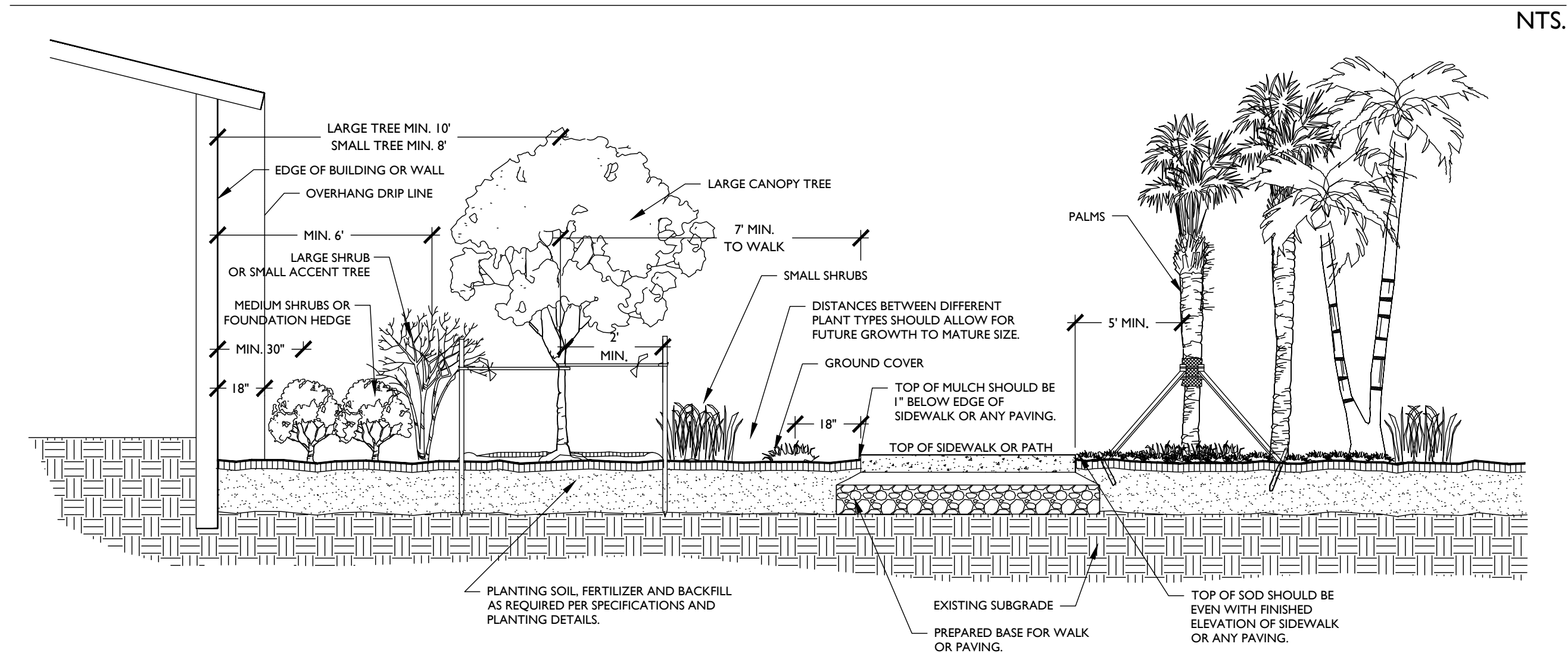
SHRUB PLANTING DETAIL



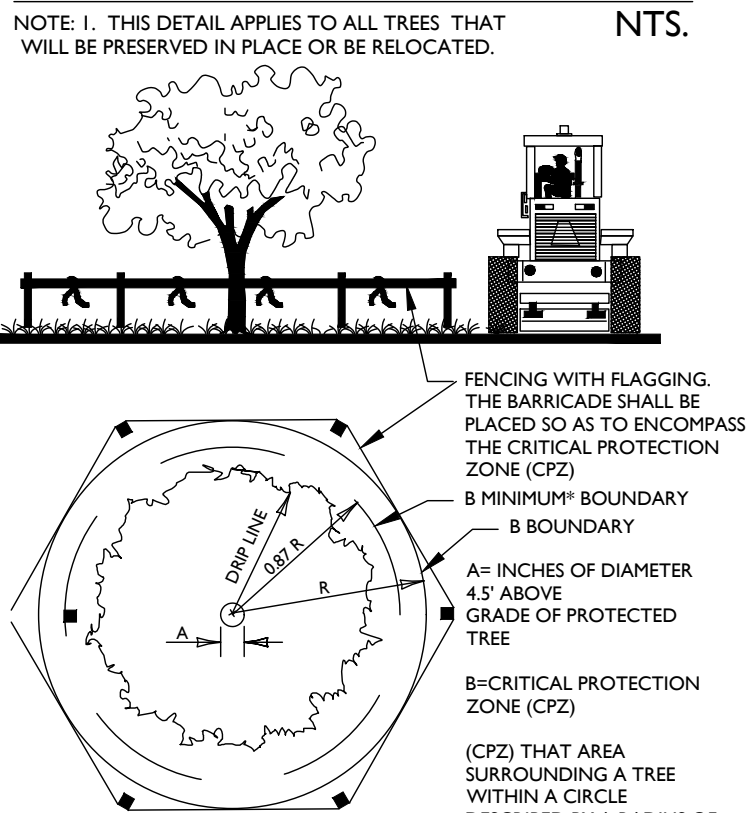
ROOT BARRIER DETAIL



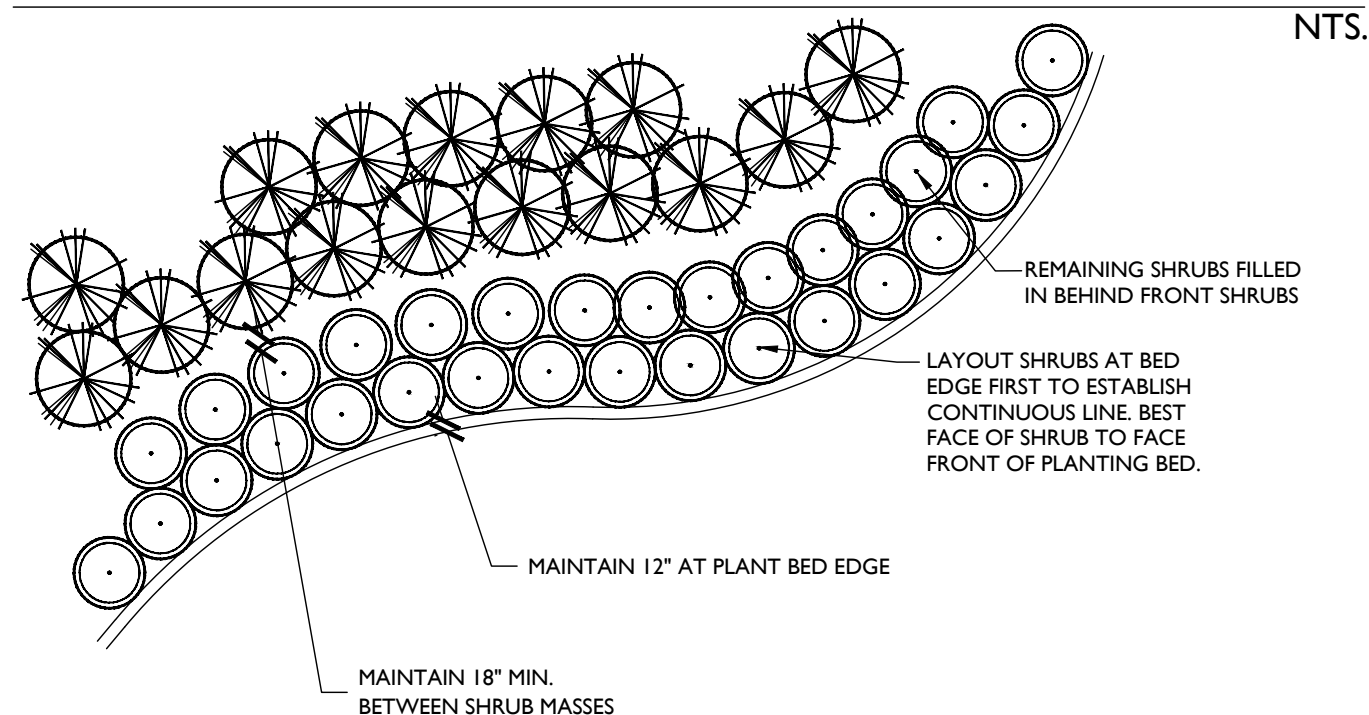
TYPICAL PLANTING DIAGRAM



TREE PROTECTION DETAIL



SHRUB AND GROUND COVER PLANTING DETAIL



LANDSCAPE NOTES:

1. STRUCTURAL ELEMENTS AND HARDSCAPE FEATURES INDICATED ON LANDSCAPE PLANS ARE FOR INFORMATIONAL PURPOSES ONLY. LANDSCAPE PLANS ARE TO BE UTILIZED FOR LOCATION OF LIVING PLANT MATERIAL ONLY. LANDSCAPE PLANS SHOULD NOT BE UTILIZED FOR STAKING AND LAYOUT OR LOCATION OF ANY STRUCTURAL SITE FEATURES INCLUDING BUT NOT LIMITED TO: BUILDINGS, SIGNAGE, PATHWAYS, EASEMENTS, BERMS, WALL, FENCES, UTILITIES OR ROADWAYS.
2. CONTRACTOR SHALL ACQUIRE ALL APPLICABLE FEDERAL, STATE, LOCAL, JURISDICTIONAL OR UTILITY COMPANY PERMITS REQUIRED PRIOR TO REMOVAL, RELOCATION, AND/OR INSTALLATION OF LANDSCAPE MATERIALS INDICATED WITHIN PLAN DOCUMENTS. THE CONTRACTOR SHALL HAVE PERMITS "IN HAND" PRIOR TO STARTING WORK. LANDSCAPE ARCHITECT SHALL BEAR NO RESPONSIBILITY FOR WORK PERFORMED WITHOUT PERMITTED DRAWINGS. THE CONTRACTOR SHALL BE RESPONSIBLE FOR ALL CHANGES TO THE WORK, AT NO ADDITIONAL COST TO THE OWNER, AS A RESULT OF UNAUTHORIZED WORK PRIOR TO RECEIPT OF PERMIT.
3. TREES SHOWN ON THIS PLAN ARE FOR GRAPHIC REPRESENTATION ONLY. TREE SPACING IS BASED ON DESIGN REQUIREMENTS AND THE TREES SHOWN ON THESE PLANS ATTEMPT TO ACCOMPLISH THAT SPACING WHILE MAINTAINING THE REQUIRED SETBACKS FROM UTILITIES. IN THE EVENT OF A CONFLICT, AFFECTED PLANT MATERIAL SHALL BE FIELD ADJUSTED WITH THE APPROVAL OF THE LANDSCAPE ARCHITECT TO AVOID CONFLICTS WITH THE WITH EXISTING AND PROPOSED UTILITIES, LIGHT POLES, DRAINAGE STRUCTURES OR LINES, LAKE MAINTENANCE EASEMENTS OR OTHER AFFECTED SITE FEATURES.
4. ANY PLANTING WITHIN THE SIGHT TRIANGLES SHALL PROVIDE UNOBSTRUCTED VIEWS AT A LEVEL BETWEEN 30" AND 8' ABOVE THE PAVEMENT.
5. ALL UTILITY BOXES/ STRUCTURES TO BE SCREENED ON 3 SIDES W/ APPROVED PLANTING MATERIAL.
6. IRRIGATION IS REQUIRED PROVIDING 100% COVERAGE WITH A MAXIMUM OF 50% OVERLAP. AN AUTOMATIC RAIN SENSOR MUST BE INCLUDED.
7. ALL PLANT MATERIAL TO BE INSTALLED SHALL CONFORM TO FLORIDA POWER AND LIGHTS' (FPLS) RIGHT TREE RIGHT PLACE GUIDELINES.
8. IN CASE OF DISCREPANCIES PLANS TAKE PRECEDENCE OVER PLANT LIST.
9. LANDSCAPE CONTRACTOR RESPONSIBLE FOR VERIFICATION OF ALL QUANTITIES PRIOR TO BIDDING.
10. REMOVAL OF EXISTING VEGETATION IS RESPONSIBILITY OF LANDSCAPE CONTRACTOR.
11. RELOCATION OF EXISTING VEGETATION IS RESPONSIBILITY OF LANDSCAPE CONTRACTOR. REFER TO SPECIFICATIONS FOR RELOCATION INSTRUCTIONS.
12. ALL PLANT MATERIAL TO BE FLORIDA GRADE #1 AT TIME OF INSTALLATION UNLESS OTHERWISE NOTED.

11'WGL

2035 Ylisa Parkway, West Palm Beach, FL 33411  
Phone No. 866.909.2220 www.wginc.com  
Cert No. 6091 - LB No. 7055

NOT FOR CONSTRUCTION

NO.	DATE	DESCRIPTION	BY
1	03-26-2021	RESUBMITTAL	
2	05-12-2021	RESUBMITTAL	

CAD 627304HFDWG	6273.01	SW	TM	12-28-2020
LANDSCAPE ARCHITECT OF RECORD TIFFANY DELYNN MAY, PLA FL# LA6667274				

THE BEXLY AT BOUTWELL  
3300 BOUTWELL ROAD  
LAKE WORTH BEACH  
LANDSCAPE DETAILS

SHEET:  
LP-3.01

S:\proj\New\_Temp\com\laid\proj\lp3\lp3.dwg: 11/4/2021 11:44:52 AM: Saved: 5/12/2021 11:44:52 AM: Saved: 5/12/2021 11:44:18 AM



