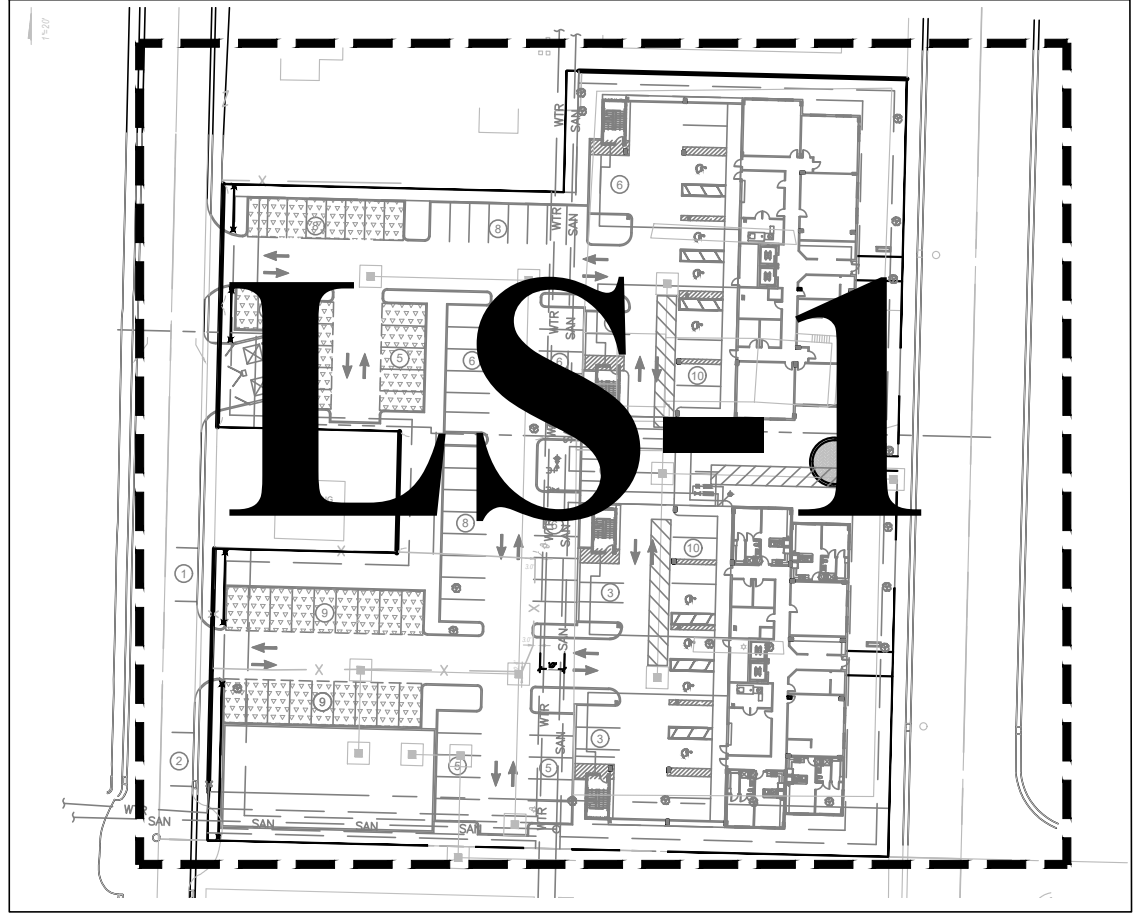
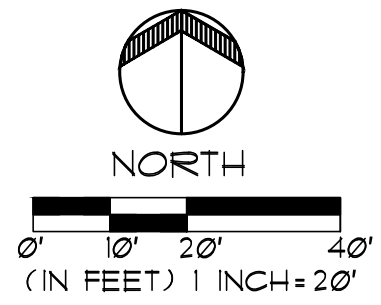


# Landscape Plans

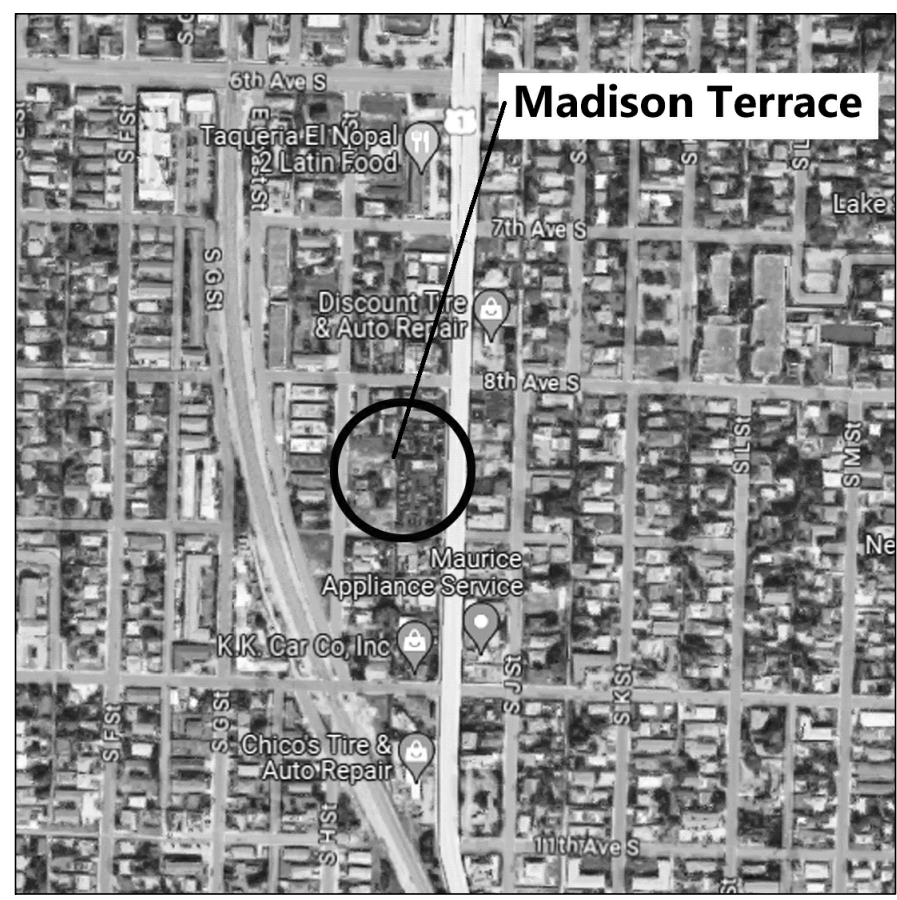
**NOTE:**  
 PLANTINGS WITHIN THE UTILITY EASEMENT WILL BE LIMITED TO SHRUBS, GROUNDCOVERS & SOD. IF MODIFICATIONS TO THE PLANTING DESIGN OR ROOT BARRIERS IN SPECIFIC LOCATIONS ARE NEEDED, THEY WILL BE ADDRESSED AT CONSTRUCTION PERMITTING AND PRIOR TO INSTALLATION.

SCHEDULE OF DRAWINGS

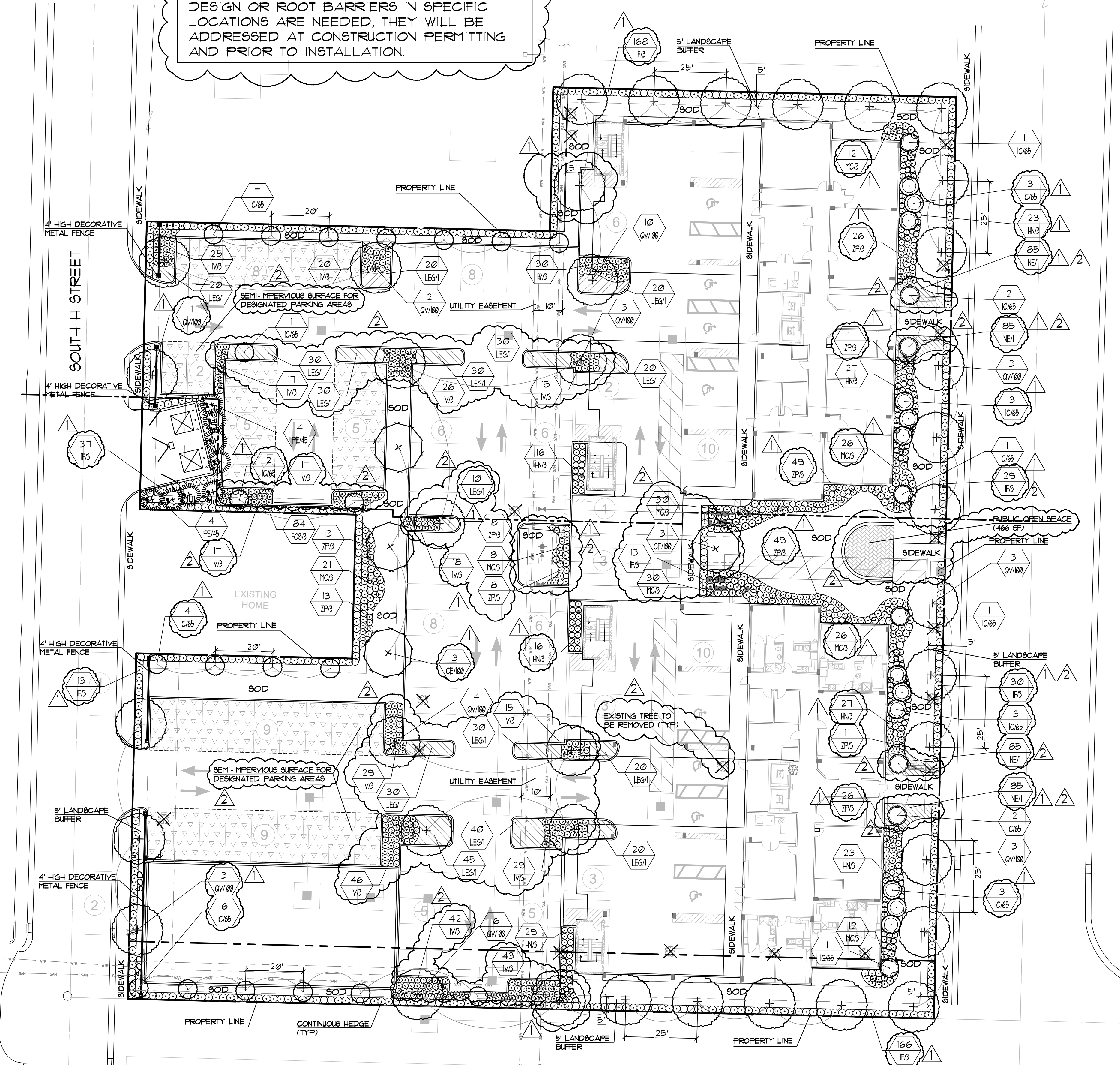
LS-1	LANDSCAPE PLAN 1
LD-1	LANDSCAPE DETAILS & PLANT LIST



KEY MAP  
SCALE: N.T.S.



LOCATION MAP  
SCALE: N.T.S.



STATE HWY 805

LANDSCAPE CALCULATIONS:

- IMPERVIOUS COVERAGE**
- TOTAL ACREAGE: 78,850 SF (1.81 AC)
  - TOTAL IMPERVIOUS: 50,944 SF
  - 50,944 / 78,850 = 64.6% (65% MAX. ALLOWED)
- PERIMETER LANDSCAPE BUFFER**
- 5' REQUIRED PERIMETER LANDSCAPE STRIP BETWEEN OFF-STREET PARKING AND ROW: 110 LF.**
- REQUIRED: 1 MEDIUM TREE = 110 LF / 20 LF = 6, PROVIDED: 11
  - CONTINUOUS 3' HEDGE
- PERIMETER LANDSCAPE BETWEEN OFF-STREET PARKING AND ABUTTING PROPERTIES**
- 144 LF OF VUA FRONTING ABUTTING PROPERTY
- REQUIRED: 1 MEDIUM TREE = 144 / 20 LF = 7, PROVIDED: 18
  - CONTINUOUS 3' HEDGE
- PERIMETER LANDSCAPE BETWEEN OTHER VEHICULAR USE**
- REQUIRED: 1 LARGE TREE = 296 LF / 25 LF = 8, PROVIDED: 12
  - CONTINUOUS 3' HEDGE
- NORTH PERIMETER LANDSCAPE BUFFER**
- REQUIRED: 1 LARGE TREE = 185 LF / 25 LF = 7, PROVIDED: 1
  - REQUIRED: 1 MEDIUM TREE = 140 / 20 LF = 7, PROVIDED: 1
  - CONTINUOUS 3' HEDGE
- SOUTH PERIMETER LANDSCAPE BUFFER**
- REQUIRED: 1 LARGE TREE = 181 LF / 25 LF = 7, PROVIDED: 1
  - REQUIRED: 1 MEDIUM TREE = 122 / 20 LF = 6, PROVIDED: 6
  - CONTINUOUS 3' HEDGE
- INTERIOR LANDSCAPE FOR PARKING AREAS**
- TOTAL PARKING LOT AREA: 50,012 SF x 20% = 1,002 SF
  - TOTAL REQUIRED VUA LANDSCAPE ISLANDS: 1,002 SF (20%)
  - PROVIDED: 5,201 SF (2,395 SF SHORT)
- INTERIOR LANDSCAPE (EXCLUSIVE OF VUA AND BUILDINGS): 6,806 SF**
- REQUIRED: 1 MEDIUM TREE = 6,806 SF / 400 SF = 17, PROVIDED: 20
- NATIVE PLANT MATERIAL CALCULATIONS**
- SEVENTY-FIVE (75) PERCENT OF REQUIRED TREE SPECIES SHALL BE NATIVE: PROVIDED = (100%)
  - SEVENTY-FIVE (75) PERCENT OF REQUIRED SHRUB SPECIES SHALL BE NATIVE: PROVIDED = (100%)
- NO MORE THAN 50% OF LANDSCAPE AREAS SHALL BE SOD. TOTAL LANDSCAPE AREA = 21,906, TOTAL PROVIDED SOD = 9,341 SF (33.5%)
  - HEDGE/FENCE PROVIDED TO SCREEN MECHANICAL EQUIPMENT
- NOTE:**  
 ALL LANDSCAPED AREAS SHALL BE PROVIDED WITH AN IRRIGATION SYSTEM, AUTOMATICALLY OPERATED, TO PROVIDE COMPLETE COVERAGE OF ALL PLANT MATERIALS TO BE MAINTAINED. THIS SYSTEM SHOULD BE DESIGNED TO AUTOMATICALLY SHUT OFF WHEN RAINING. IRRIGATION SYSTEM SHALL BE EQUIPPED WITH RAIN SENSOR.

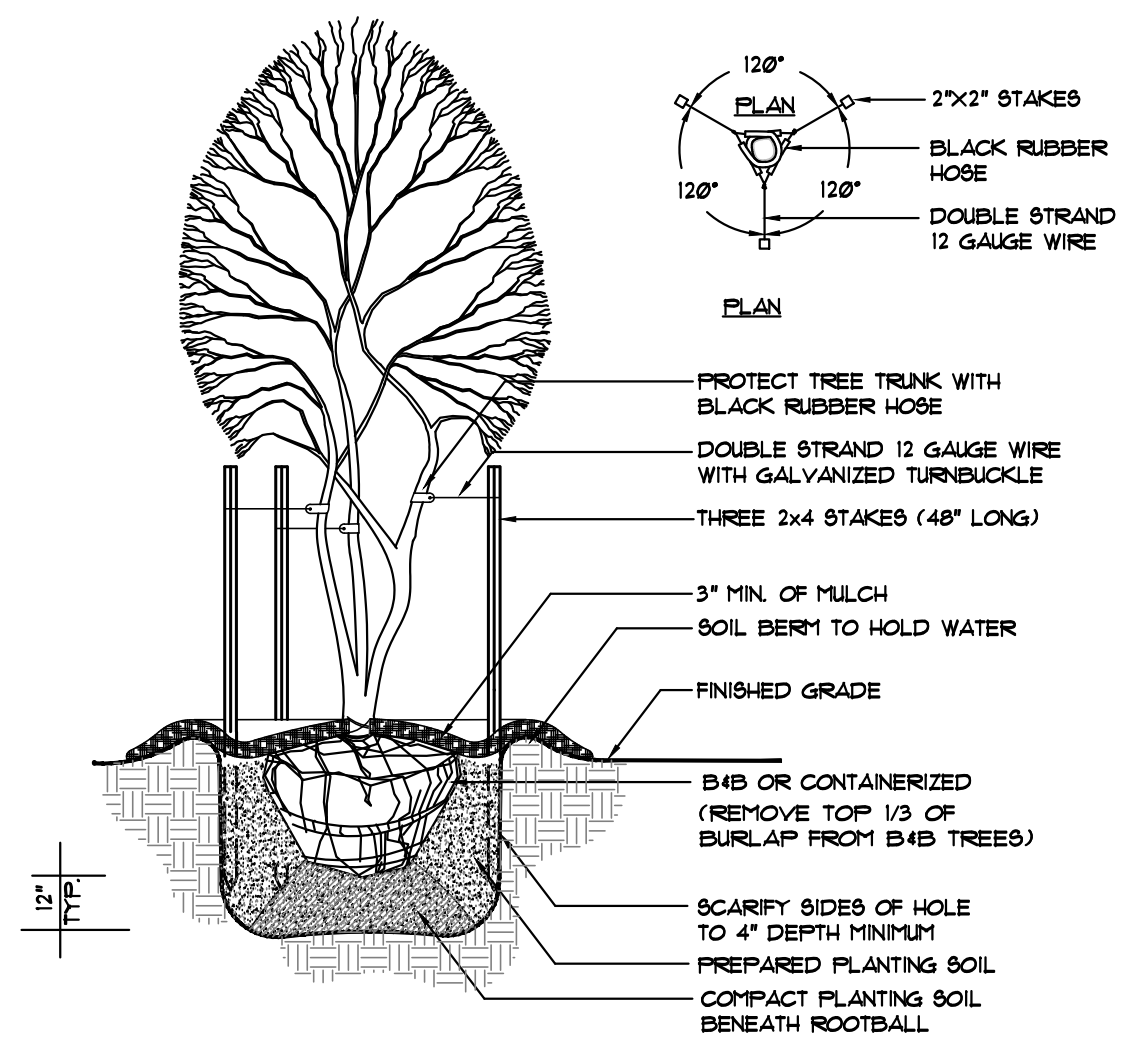
**FOREMAN CONSULTING, INC.**  
 LANDSCAPE ARCHITECTURE  
 ARCHITECTURE  
 DEVELOPMENT CONSULTING  
 LAND PLANNING  
 746 W. WASHINGTON ST., SUITE 100  
 MADISON, WI 53703  
 TEL: 608.263.1234  
 FAX: 608.263.1235  
 WWW.FOREMANCONSULTING.COM

DESCRIPTION	REVISED PER CITY COMMENTS	DATE
A 08-23-23	REVISED PER CITY COMMENTS	
A 08-23-23	REVISED PER CITY COMMENTS	

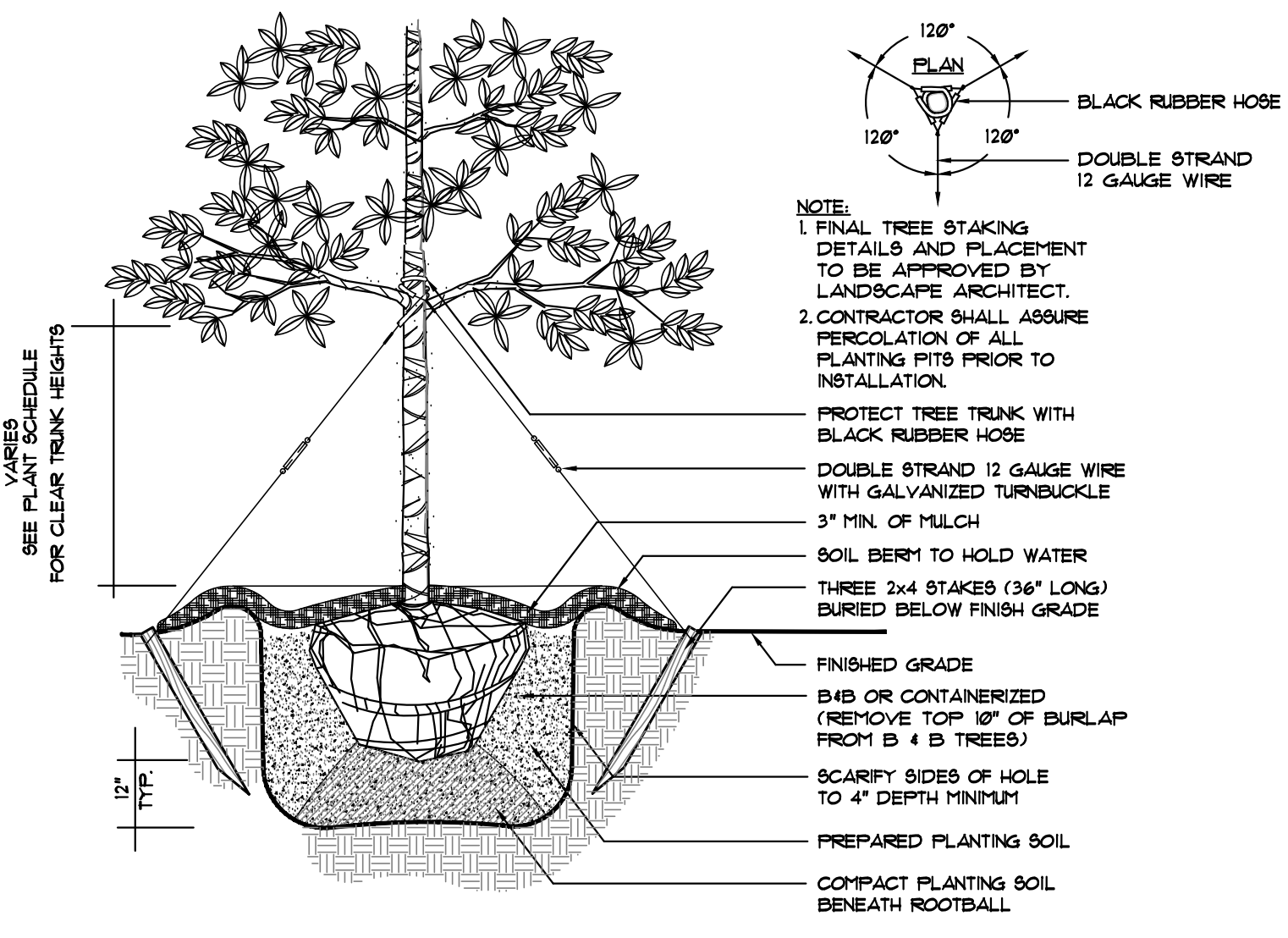
**MADISON TERRACE**  
 PREPARED FOR: PARAMETRIC DESIGN & DEVELOPMENT  
 LAKE WORTH BEACH  
 LANDSCAPE PLAN 1

DATE: 04-25-2023  
 SCALE: 1" = 20'  
 DRAWN BY: ZYM  
 DESIGNED BY: KJF  
 CHECKED BY: KJF

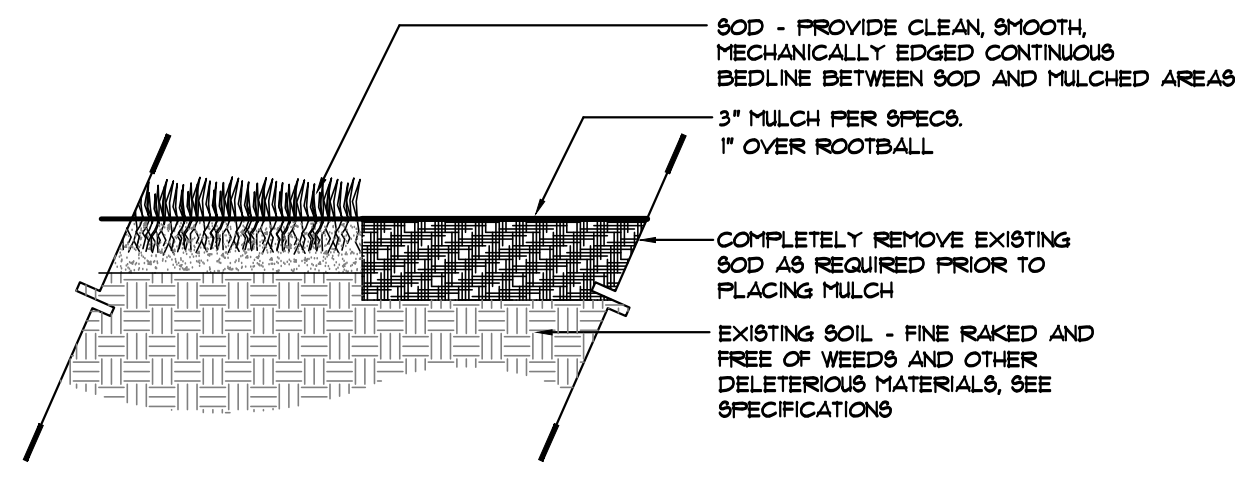
SHEET NO.  
 LS-1



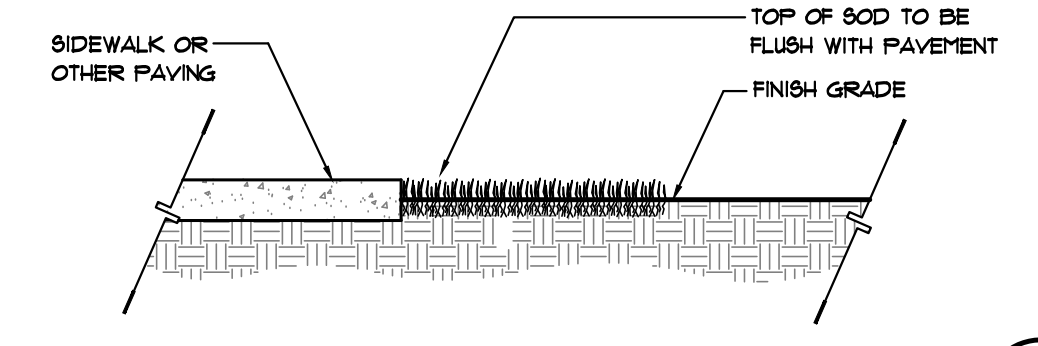
**MULTI-STEM TREE PLANTING DETAIL** 1 I.D.-1 NOT TO SCALE



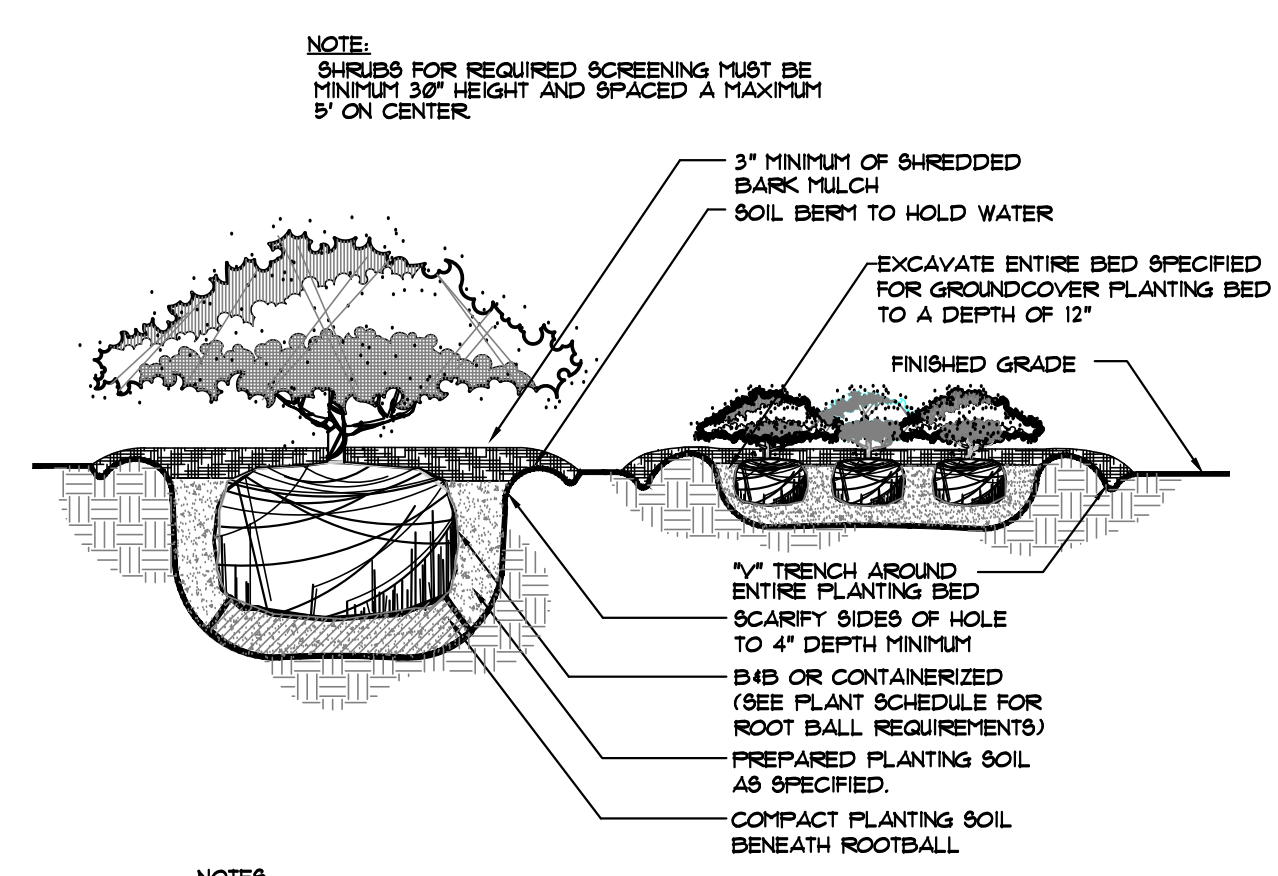
**LARGE TREE PLANTING DETAIL** 2 I.D.-1 NOT TO SCALE



**SOD PLACEMENT ADJ. TO MULCH** 3 I.D.-1 NOT TO SCALE



**SOD PLACEMENT ADJ. TO PAVEMENT** 4 I.D.-1 NOT TO SCALE



**SHRUBS AND GROUNDCOVER PLANTING DETAIL** 5 I.D.-1 NOT TO SCALE

**PLANT LIST:**

TREES						
QTY.	ABBREV.	BOTANICAL NAME	COMMON NAME	SIZE & SPECIFICATION	NATIVE	FLORIDA FRIENDLY
4	CE/100	<i>Conocarpus erectus</i>	Green Buttonwood	100 gal., 12"-14' x 5'-6', 3" cal.	YES	YES
40	IC/65	<i>Ilex coccinea</i>	Dahoon Holly	65 gal., min. 10' ht., 2 1/2" cal.	YES	YES
8	PE/45	<i>Pinus ellioti</i>	Slash Pine	45 gal., min. 10' ht., 3" cal.	YES	YES
38	QV/100	<i>Quercus virginiana</i>	Live Oak	100 gal., 12"-14' x 5'-6', 3" cal.	YES	YES
SHRUBS, VINES & GROUNDCOVER						
QTY.	ABBREV.	BOTANICAL NAME	COMMON NAME	SIZE & SPECIFICATION	NATIVE	FLORIDA FRIENDLY
84	FO6/3	<i>Forestiera segregate</i>	Florida Privet	3 gal., 24" ht., 30" o.c.	YES	YES
161	HN/3	<i>Hamelia nodosa</i>	Dwarf Firebush	3 gal., 24" ht., 24" spr., 30" o.c.	YES	YES
456	F/3	<i>Illicium floridanum</i>	Florida Anise	3 gal., 18"-24" x 18"-24", 30" o.c.	YES	YES
389	IV/3	<i>Ilex vomitoria 'Yaupon'</i>	Yaupon Holly	3 gal., 15"-18" x 15"-18", 24" o.c.	YES	YES
395	LEG/1	<i>Liriope 'Emerald Goddess'</i>	Emerald Goddess	1 gal., 4-5 ppp., full, 15" o.c.	NO	YES
165	MC/3	<i>Muhlenbergia capillaris</i>	Muhly Grass	3 gal., 24"-30" x 18"-24", 30" o.c.	YES	YES
340	NE/1	<i>Nephrolepis exaltata</i>	Boston Fern	1 gal., 4-5 ppp., 12" runners, 12" o.c.	YES	YES
214	ZP/3	<i>Zamia pumilo</i>	Coontie	3 gal., 24" ht., 30" o.c.	YES	YES
SOD						
QTY.	ABBREV.	BOTANICAL NAME	COMMON NAME	SIZE & SPECIFICATION	NATIVE	FLORIDA FRIENDLY
10,053	SOD	<i>Paepalum notatum</i>	Bahia Sod	solid sod	NO	YES

**LANDSCAPE NOTES:**

- ALL PLANT MATERIAL SHALL BE FLORIDA GRADE NO. 1 OR BETTER AS SPECIFIED IN "GRADES AND STANDARDS FOR NURSERY PLANTS", "PARTS 1 AND 2, BY DIVISION OF PLANT INDUSTRY, FLORIDA", DEPARTMENT OF AGRICULTURE AND CONSUMER SERVICES, AND SHALL CONFORM TO CURRENT AMERICAN ASSOCIATION OF NURSERYMEN 'STANDARDS FOR NURSERY STOCK', LATEST EDITION.
- THE LANDSCAPE CONTRACTOR SHALL BE RESPONSIBLE FOR VERIFICATION OF QUANTITIES IN THE PLANT LIST. IN THE EVENT OF A CONFLICT BETWEEN QUANTITIES ON THE PLANT LIST AND THE PLANS, THE PLANS SHALL CONTROL, AND THE DISCREPANCY SHALL BE BROUGHT TO THE ATTENTION OF THE LANDSCAPE ARCHITECT PRIOR TO BID. ANY DEVIATION FROM THESE PLANS MUST BE APPROVED BY THE LANDSCAPE ARCHITECT OR OWNER'S REPRESENTATIVE.
- CONTRACTOR IS RESPONSIBLE FOR COMPLIANCE WITH ALL APPLICABLE BUILDING CODES, ORDINANCES AND LOCAL REGULATIONS. THE CONTRACTOR SHALL BE RESPONSIBLE FOR OBTAINING ALL NECESSARY PERMITS TO PERFORM THE WORK.
- THE LANDSCAPE CONTRACTOR IS RESPONSIBLE FOR INSPECTION OF EXISTING CONDITIONS AND PROMPTLY REPORTING ALL DISCREPANCIES AND IMPROPER CONDITIONS (WETNESS, MUCK, DEBRIS, ECT) TO LANDSCAPE ARCHITECT PRIOR TO BIDDING. CONTRACTOR IS RESPONSIBLE FOR SOIL ANALYSIS PRIOR TO INSTALLATION OF PLANTINGS, AND IS RESPONSIBLE FOR ALL SOIL AMENDMENTS TO CONFORM TO SPECIFICATIONS.
- THE LANDSCAPE CONTRACTOR SHALL ACQUAINT HIMSELF WITH ALL CIVIL DRAWING AS THEY RELATE TO PAVING SITE GRADING, AND ALL UTILITIES, (INCLUDING WATER, SEWER AND ELECTRICAL SUPPLY) TO PRECLUDE ANY MISUNDERSTANDING AND ENSURE TROUBLE FREE INSTALLATION. THE EXACT LOCATION OF ALL EXISTING STRUCTURES, UNDERGROUND UTILITIES, EXISTING UNDERGROUND SPRINKLERS AND PIPE MAY NOT BE INDICATED ON DRAWINGS. THE CONTRACTOR SHALL CONDUCT HIS WORK IN A MANNER TO PREVENT INTERRUPTION OR DAMAGE TO EXISTING SYSTEMS WHICH MUST REMAIN OPERATIONAL. THE CONTRACTOR SHALL PROTECT UTILITY SERVICES WHICH MUST REMAIN OPERATIONAL AND SHALL BE RESPONSIBLE FOR THERE REPLACEMENT IF DAMAGED BY HIM.
- ALL PLANTING BEDS SHALL RECEIVE A 3" LAYER (1" OVER ROOTBALL) OF PINE BARK MULCH.

**FOREMAN CONSULTING, INC.**  
LANDSCAPE ARCHITECTURE  
DEVELOPMENT CONSULTING  
LAND PLANNING  
246 W. WASHINGTON AVE. LAKE WORTH, FL 33464  
TEL: 561-966-1111 FAX: 561-966-1112

---

**MADISON TERRACE**  
PREPARED FOR: PARAMETRIC DESIGN & DEVELOPMENT  
LAKE WORTH BEACH  
LANDSCAPE DETAILS & PLANT LIST

---

DESCRIPTION	QTY	UNIT	DATE	BY	NO.

---

DATE: 04-25-2023  
SCALE: N.T.S.  
DRAWN BY: TYM  
DESIGNED BY: KJF  
CHECKED BY: KJF

---

SHEET NO.  
**LD-1**